

DENTON ISD HEAD START PROGRAM

901 AUDRA LANE. DENTON, TX. 76209

ANNUAL REPORT 2016-2017

MISSION: To provide a comprehensive and integrated system for delivering services to families and children in such a way that it:

- Enhances children's growth and development
- Strengthens families as the primary nurturers of their children
- Provides children with educational, health, and nutritional services
- Links children and families to needed community services, and
- Ensures well-managed programs that involve parents in decision making

So that it brings about a greater degree of family autonomy so as to promote self-concept & social and academic competence in preschool children.

VISION: To help students and their families to reach their full potential.

COMMUNITY PARTNERS

COMMUNITY SERVICES
FOSTER GRANDPARENTS
DENTON CITY COUNTY DAY SCHOOL
CUMBERLAND PRESBYTERIAN CHILDREN'S HOME
FAITH TABERNACLE CHURCH
FRIENDS OF THE FAMILY
HOPE INC.
INTERFAITH
TWU GROSS MOTOR PROGRAM
UNT PLAY TEHERAPY
KIWANIS CLUB
UNITED WAY
WIC
DISD ADULT ED ESL/GED PROGRAMS
ONCE UPON A CHILD

WE ARE WORKING WITH OUR COALITION TO BECOME A SCHOOL-BASED COMMUNITY. WE NOW HAVE A FOOD 4 KIDS PROGRAM AND A CLOTHES CLOSET ON CAMPUS.

ENROLLMENT

Funded Enrollment: 193
Total number of Children Served: 213
Average Monthly Enrollment: 100%
Total % of eligible families served: 93%

Of the 213 families that were enrolled, 68 were two-parent families. 158 had a family income below 100% of the federal poverty level. 9 received public assistance such as SSI, or TANF. 7 were in foster care, 19 were homeless, 0% were between 100% - 130% of the federal poverty level and 0% were over-income as allowed by law.

PROPOSED BUDGET	
Payroll/Subs:	\$1,250,240
Training:	21,166
Mental Health Consultant	1,700
Classroom snacks:	16,500
Classroom supplies & Technology	9,437
Head Start Insurance:	810
Total:	\$1,299,853

ACTUAL EXPENDITURES	
Payroll/Subs:	\$1,257,238
Training:	21,166
Classroom Supplies:	23,599
Classroom Shades:	5620
Furniture	4037
Classroom Snacks:	9,699
Head Start Insurance:	810
Policy Council Training:	700
Total:	1,322,869



FINANCIAL AUDIT

The Denton ISD Annual financial audit for the year ending June 30, 2016 was conducted by Hankins, Eastup, Deaton, Tonn & Seay. The audit in its entirety can be found at: <http://www.dentonisd.org>

The program also received a COLA (Cost of Living Allocation) in the amount of \$23,016 which was used exclusively for salaries, which then enabled us to increase our proposed budget in the supplies and technology areas.

2016-2017 FEDERAL MONITORING REVIEWS

The Denton ISD Head Start Program is on a 5 yr. grant cycle. With this award, the new comprehensive monitoring process is being implemented. For the 2016-17 school year, we participated in the following review event:
ERSEA Review (1/25-26, 2017)
 Based on the information gathered, no area of non-compliance was found during the course of the review. Accordingly, no correction action is required at this time.

RACE & ETHNICITY	HISPANIC OR LATINO ORIGIN	NON-HISPANIC OR NON-LATINO ORIGIN
American Indian or Alaska Native	2	0
Asian	2	5
<i>Black or African American</i>	6	47
<i>Native Hawaiian or Pacific Islander</i>	1	
<i>White</i>	109	21



PRIMARY LANGUAGE OF FAMILY AT HOME	
<i>English</i>	93
<i>Spanish</i>	91
<i>Middle Eastern & South Asian Languages</i>	6
<i>East Asian Languages</i>	2
<i>African Language</i>	1



HEALTHY CHILDREN

Each child is required to have a physical and dental exam within 90 days of enrollment in the Head Start Program. Good health is critical in a child's development. Our campus has a full-time Registered Nurse (RN) who also serves as the Head Start Health Specialist. The RN ensures that each child has received regular dental and physical exams and meets the needs of students with acute and chronic health needs. During the 2016-2017 school year, health screening including hearing, vision, height and weight were performed on each Head Start Student.

INSURANCE	# OF CHILDREN AT ENROLLMENT	# OF CHILDREN AT END OF ENROLLMENT YEAR
Enrolled in Medicaid and/or CHIP	190/98.4%	190/98.4%
Private insurance	2/1.03%	2/1.03%
No insurance	1/.52%	1/.52%
Up to date on a schedule of age-appropriate preventive and primary health care	193/100%	193/100%

IMMUNIZATIONS	# OF CHILDREN AT ENROLLMENT	# OF CHILDREN AT END OF ENROLLMENT YEAR
Up to date	192/99.5%	190/99.5%
Exempt	1/.52%	1/.52%

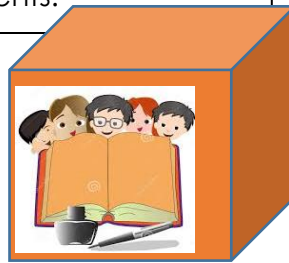
BODY MASS INDEX	# OF CHILDREN AT ENROLLMENT
Underweight	5/2.6%
Healthy weight	137/70.98%
Overweight	24/12.43%
Obese	27/13.98%

DENTAL	# OF CHILDREN AT ENROLLMENT	# OF CHILDREN AT END OF ENROLLMENT YEAR
Continuous, accessible dental care provided by a dentist	185/95.9%	193/100%
Receiving preventative care	185/95.9%	193/100%

SCHOOL READINESS

Kindergarten Transition Activities:

Throughout the school year, we have provided the following transition activities to help prepare students and families for Kindergarten: Denton ISD Kinder Parent Orientation, Parent Kinder Transition Resource Fair, Going to Kindergarten literacy event, summer transition boxes, and Graduation. Community agencies and departments within Denton ISD have collaborated to plan and provide helpful resources to our students and families. We used flyers, newsletters, parent teacher conferences, home visits, phone calls, and school announcements to inform, encourage, and remind parents of upcoming events.



Curricula: DLM, Scholastic, Growing with Mathematics, TSR CIRCLE Activity Collection, UBD, Cancionero, Estrellita, Alfarrimas

Classroom Management: PBIS, Energy Bus, Bucket fillers

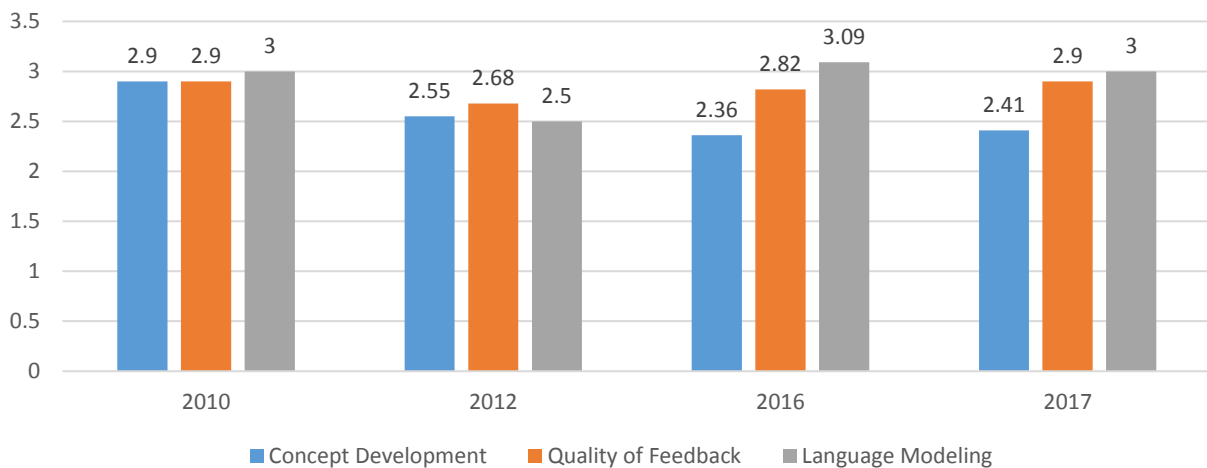
Dual Language Model: Gomez and Gomez

Developmental Screeners: DIAL-4, ASQ, Denton ISD Universal Screener

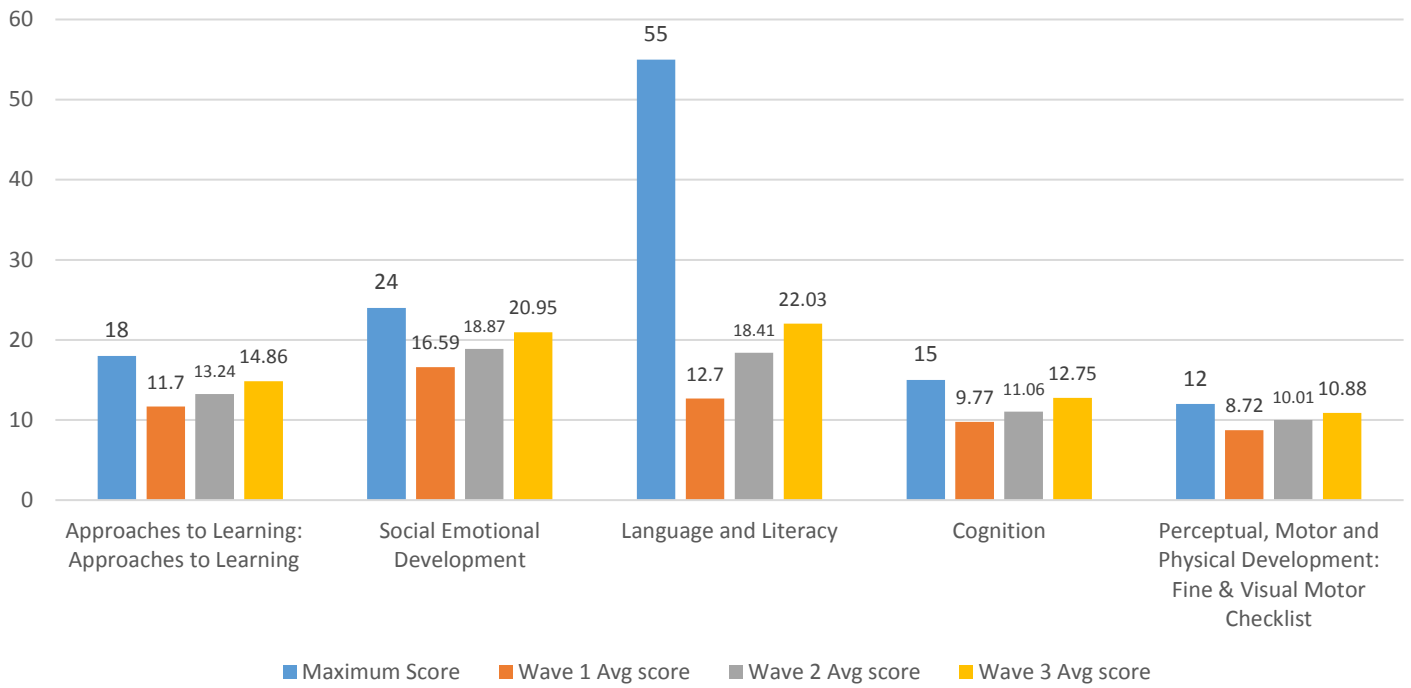
Ongoing Monitoring: TSR CLI Engage, Student Portfolios

Ongoing Teacher Support: Denton ISD Pacing Guides, PLCs, Instructional Coaching/ Support

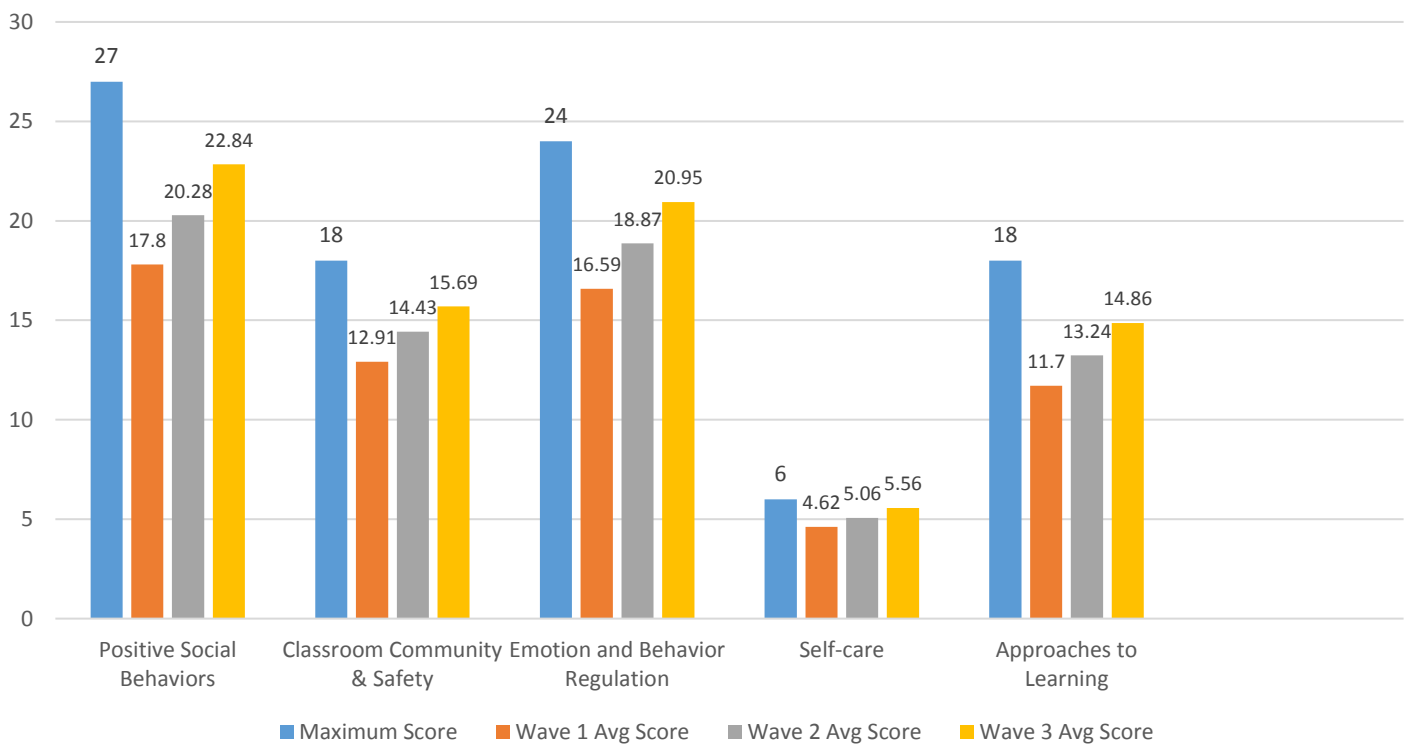
DISD CLASS Instructional Support Domain Data



FY16 Denton ISD Head Start School Readiness Outcomes (CLI Progress Monitoring)



FY16 DISD Head Start CLI Social Emotional Growth Report



PARENT, FAMILY AND COMMUNITY ENGAGEMENT



SCHOOL WIDE ACTIVITIES	ATTENDANCE
Grandparent Day	118
Dunken With Dearest	52
Hat Parade	96
Nation's Celebration	All students
Make It Take It	360
Santa Day	All students
Black History Presentation	All students
Walk Across Texas	9
Rodeo Day	All students
Week of the Young Child	All students
Cinco de Mayo	All students
Saving more at Grocery Store	5
Field Day	All students
Volunteer Reception	15

PARENT CLASSES OFFERED	ATTENDANCE
ESL	15
Eating the Rainbow on my Plate	17
Nutrition/Walk Across Texas	9
Child Behavior	15
Families Reading Everyday (FRED)	38
FRED Celebration	14
Choose Your Foods (Diabetes)	6
Marriage Adjustment	5
Budgeting	2
Diabetic Class	12
Creating Safe and Healthier Meal	6
Balancing Your Day	7

Month	Head Start Volunteer Hours	In-Kind Dollar Value <small>(hrs * 15.00 ea)</small>
Aug/Sept	4754.23	71,313.45
October	2,787.55	41,813.25
November	2,617.22	39,258.30
December	3,487.00	52,305.00
January	3,309.63	49,644.45
February	3,438.13	51,571.95
March	3336.50	50047.50
April	3,734.53	56,017.95
May	2,169.00	32,535.00
Total	29633.79	444,506.85

Disabilities and Mental Health Services



During the 2016-17 school year the Denton ISD Head Start Program began the year with 9 returning students identified as eligible for special education services. At the start of the school year, 4 students were found to have been identified as eligible for special education while enrolled in another district program resulting in a total of 13 students eligible due to a disability on 8/22/2016. By January of 2017, the program had identified 7 additional students as having a disability through the RTI/Referral process. The program ended with a total of 25 students identified as having a disability.

The Disability Specialist implemented the procedure of completing the district's Universal Screener Report immediately after scoring the DIAL-4 used as the required screener. Information was also gathered from a review of the Ages and Stages Questionnaire 3rd Edition and the Disabilities Information Form. Both of the forms were completed by parents during Round-Up.

Mental Health Services continue to be provided by the district with the district providing a licensed professional counselor 2.5 days a week. Among the duties of the counselor are the provision of class lessons related to targeted character traits. The program continues to work with the University of North Texas to provide Play Therapy to students who demonstrate a need.

MENTAL HEALTH SERVICES PROVIDED	
Number of children that the mental health professional consulted with Head Start staff about the child's behavior/mental health	62
Number of children that the mental health professional consulted with the parent/guardian about the child's behavior/mental health	37
Number of children that the mental health professional provided an individual mental health assessment	69
Number of children that the mental health professional facilitated a referral for mental health services	19

NUTRITION

The mission of the Denton ISD Child Nutrition Services is to contribute to a successful academic experience and to encourage a lifetime of healthy eating for each student. On a daily basis meals/snacks are offered to the students which meet 2/3 of the daily requirements. A variety of foods are offered to ensure the students are introduced to a wide array of foods which they might not otherwise experience. The students are served in the classroom through family style dining which provides them with the opportunity to develop social skills such as manners, conversation, and cooperation. Parent nutrition education classes are offered as well to continue to promote the idea of a healthy lifestyle beyond the classroom. The district's Child Nutrition Coordinator serves on the Head Start Program Team and Health Advisory Committee. She provides our center with a list of healthy snack options to serve. She serves as a resource for our families that have students falling in the obese/underweight categories. The nutrition department for DISD is dedicated to the students' health, well-being, and the ability to learn.