



THE LAKE AND PENINSULA SCHOOL DISTRICT

COVID-19: What You Need to Know Re-Entry Mitigation for Traveling Students and Staff

Staff and Students that travel outside of their home community are required to adhere to Local Travel Mandates.

In addition to local mandates District Staff and Students, upon returning to school after travel are required to follow the guidelines below at all times while on school grounds.

During your trip, take steps to [protect yourself and others](#) from COVID-19:

- Wear a [mask](#) at all times when in public settings to keep your nose and mouth covered.
- Avoid close contact by [staying at least 6 feet apart](#) (about 2 arms' length) from anyone who is not from your household.
- [Wash your hands](#) often or use hand sanitizer (with at least 60% alcohol).
- Avoid contact with anyone who is sick.
- Avoid touching your eyes, nose, and mouth.
- Avoid large Indoor gatherings.

Upon returning to the Community:

You may have been exposed to COVID-19 on your travels. You may feel well and not have any symptoms, but you can be contagious without symptoms and spread the virus to others. You and your travel companions pose a potential risk to your family, friends, and community for 14 days after you were exposed to the virus. Regardless of where you traveled or what you did during your trip, take these actions to protect others from getting sick after you return:

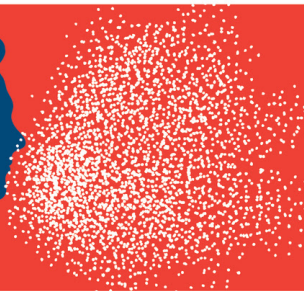
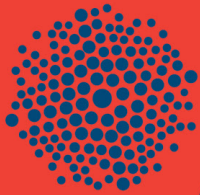
- When around others, [stay at least 6 feet](#) (about 2 arms' length) from other people who are not from your household. It is important to do this everywhere, both indoors and outdoors.
- When around others, wear a [mask](#) to keep your nose and mouth covered for 14 days. ***This includes at all times when on school grounds.***
- The District strongly recommends all individuals returning to the school community test at seven days after return (where testing is available). ***Testing does not release anyone from the 14-day mask requirement.***
- [Wash your hands](#) often or use hand sanitizer (with at least 60% alcohol).
- Watch your health and look for [symptoms of COVID-19](#). Take your temperature if you feel sick.
- Follow local recommendations and mandates for after travel.

The above will be in effect for all staff and students returning to school after travel. For the welfare and safety of others if any of these provisions are not followed, attendance at school will not be permitted and a distance education option will be offered. Reducing exposure to yourself and others is a shared responsibility.

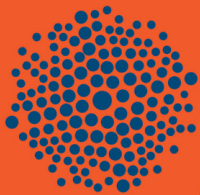
October 21, 2020

Current operations, policies, and procedures in regard to COVID will be reviewed on an ongoing basis and are subject to change.

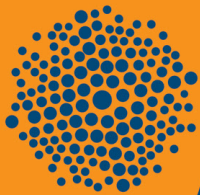
Reduce the risk, wear a mask



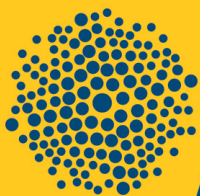
Very High



High



Medium



Low



October 21, 2020

Current operations, policies, and procedures in regard to COVID will be reviewed on an ongoing basis and are subject to change.