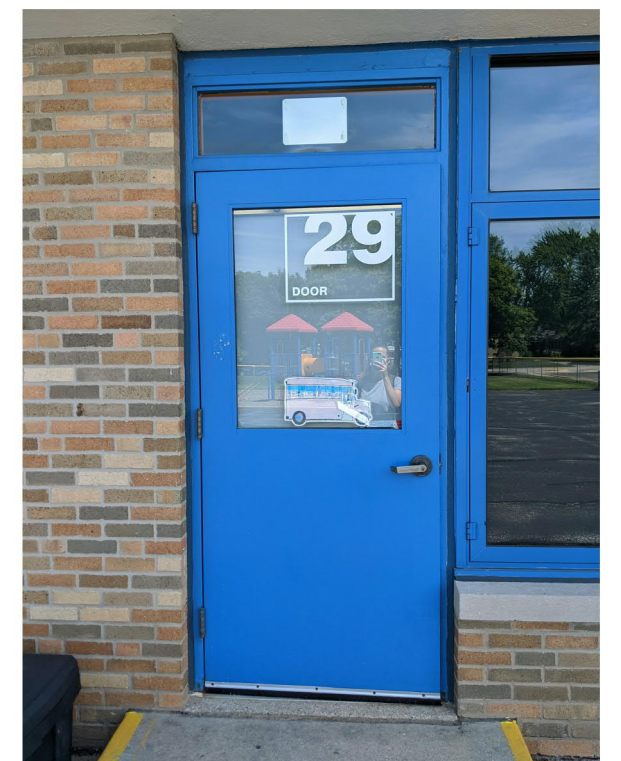




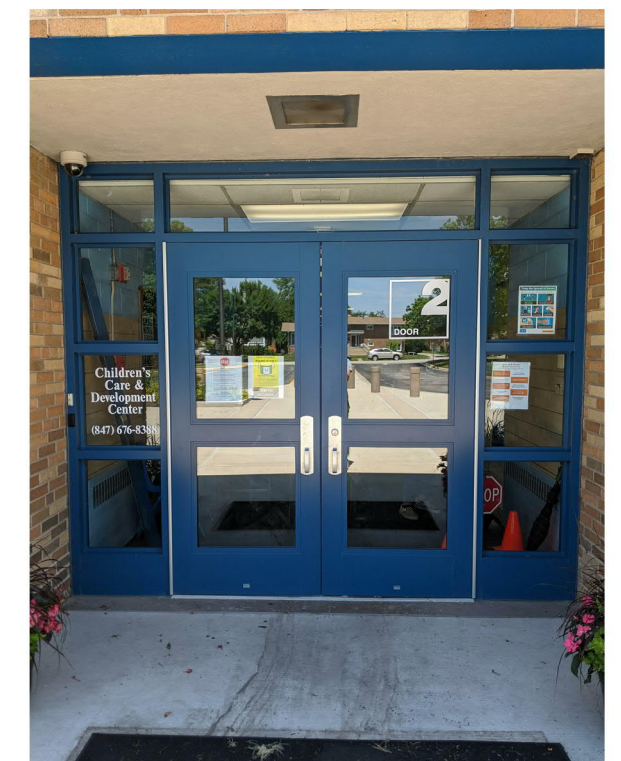
1 FLOOR PLAN - AREA A  
3/32" = 1'-0"

**DOOR SCOPE**

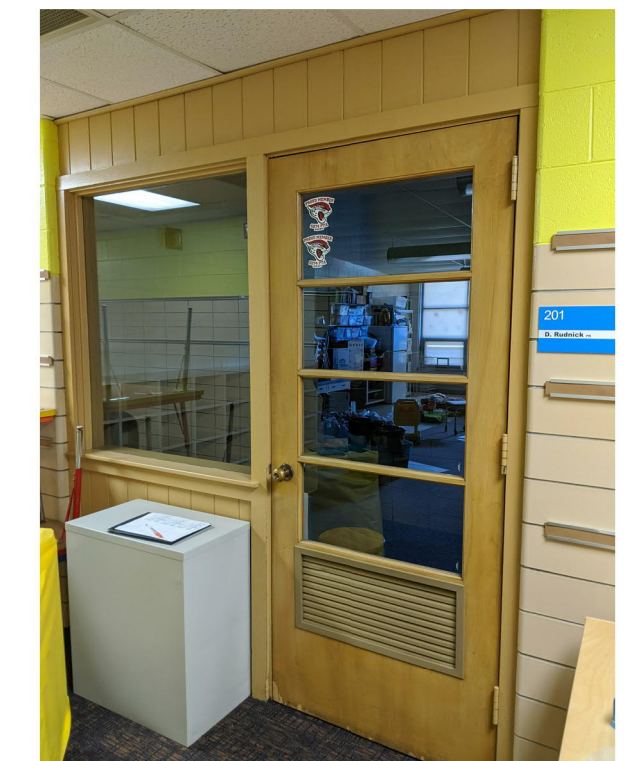
<span style="color: blue;">###</span>	REMOVE DISPLAY AT ENTRY AND REPLACE DOOR, FRAME AND HARDWARE. PROVIDE NEW GYPSUM SOFFIT AND LIGHTING.
<span style="color: red;">###</span>	REPLACE DOOR, FRAME AND HARDWARE.
<span style="color: green;">###</span>	EXISTING FRAME TO REMAIN. REPLACE DOOR AND HARDWARE.
<span style="color: black;">###</span>	EXISTING DOOR AND FRAME TO REMAIN. REPLACE HARDWARE.



TYPICAL EXTERIOR CLASSROOM DOOR - REPLACE FRAME, DOOR AND HARDWARE.



DOOR #2 - CCDC ENTRANCE - EXISTING TO REMAIN - NO WORK



TYPICAL ROOM 200, 201, AND 202 - REPLACE SIMILAR TO DISPLAY CASE ROOMS



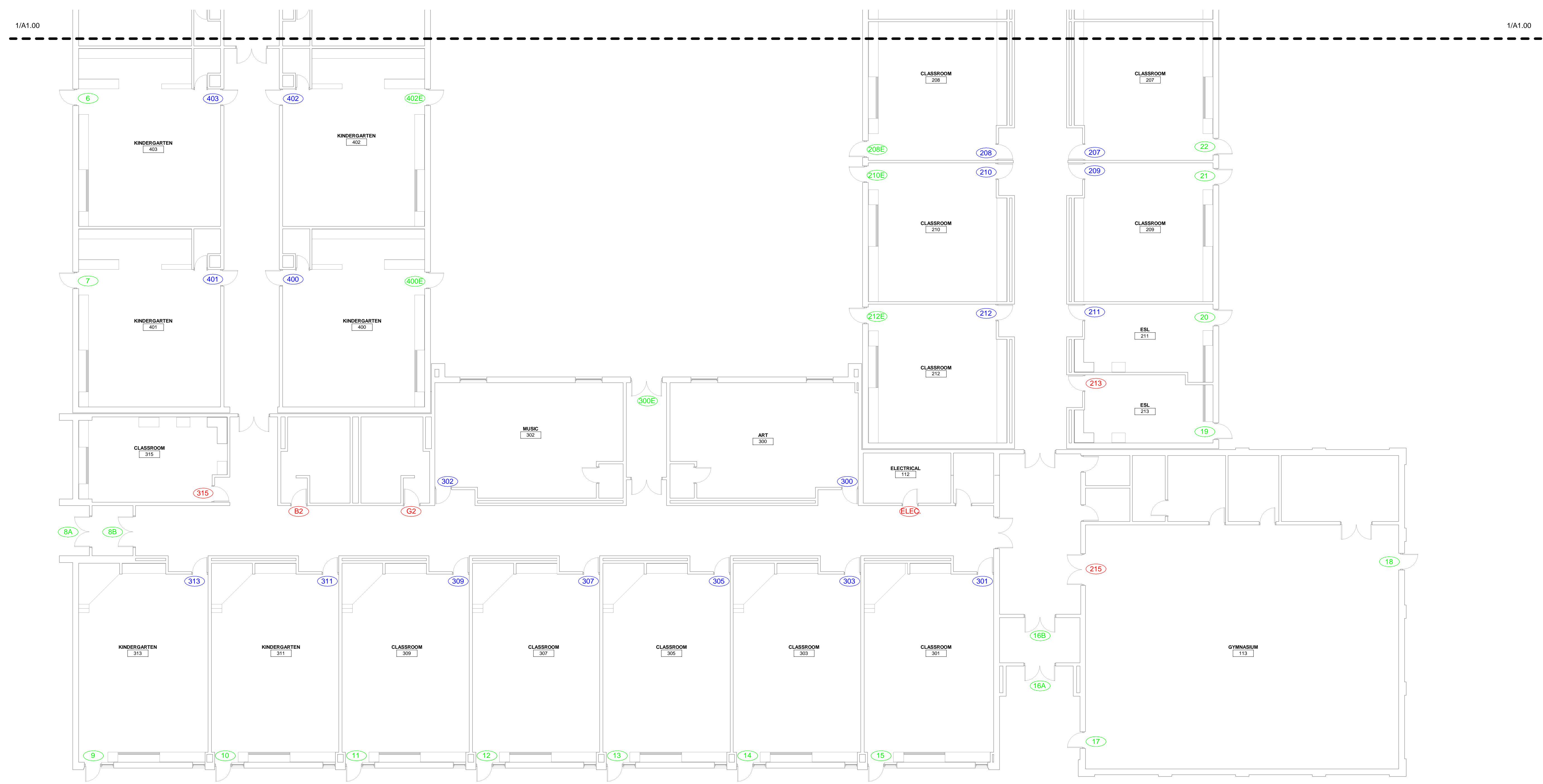
LRC DOUBLE DOOR - EXISTING TO REMAIN - NO WORK



MAIN ENTRANCE DOOR #1 - EXISTING DOOR AND FRAME TO REMAIN. REPLACE HARDWARE

NO	ISSUE	DATE

**TOOD HALL - FIRST FLOOR PLAN - AREA A**

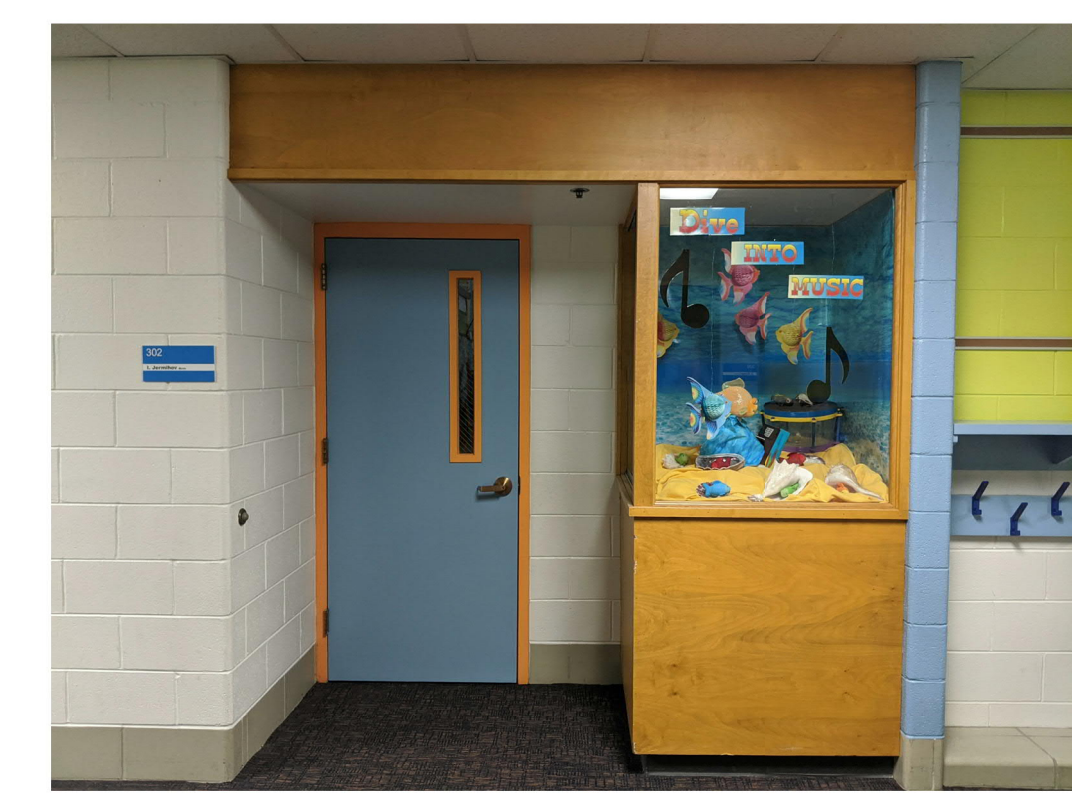


1 FLOOR PLAN - AREA B  
3/32" = 1'-0"

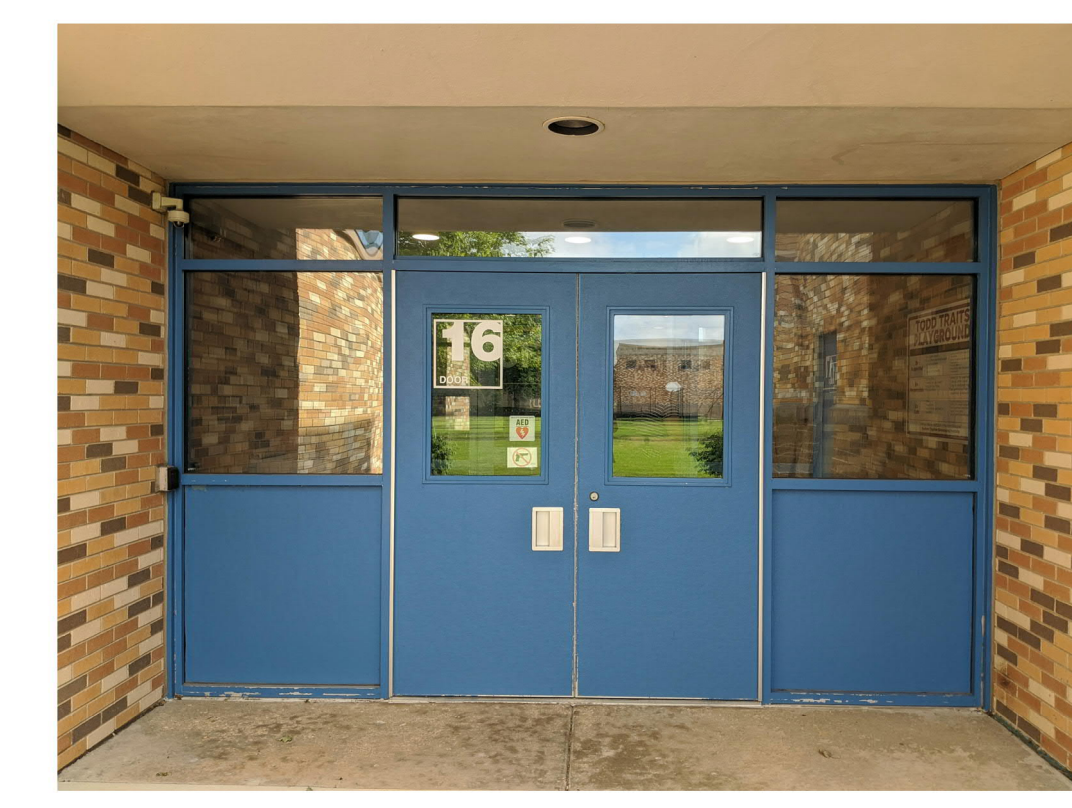
DOOR SCOPE	
(###)	REMOVE DISPLAY AT ENTRY AND REPLACE DOOR, FRAME AND HARDWARE. PROVIDE NEW GYPSUM SOFFIT AND LIGHTING.
(###)	REPLACE DOOR, FRAME AND HARDWARE.
(###)	EXISTING FRAME TO REMAIN. REPLACE DOOR AND HARDWARE.
(###)	EXISTING DOOR AND FRAME TO REMAIN. REPLACE HARDWARE.



DOOR #8 -  
WHAT IS PREFERRED STANDARD EXTERIOR DOOR?  
- FRP (LIKE DOOR #16)  
- ALUMINUM (LIKE DOORS #1 AND #2)



TYPICAL CLASSROOM ENTRY ROOM 300 AND 302 - REMOVE DISPLAY AND PROVIDE SIMILAR NEW ALCOVE DESIGN



DOOR #16 - SCOPE OF WORK TBD.  
WHAT IS PREFERRED STANDARD EXTERIOR DOOR?  
- FRP (LIKE THIS DOOR #16)  
- ALUMINUM (LIKE DOORS #1 AND #2)

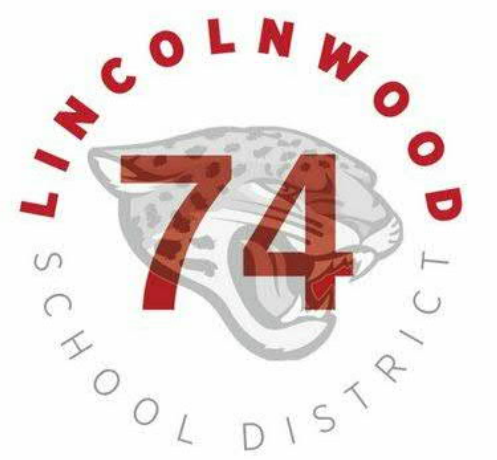
NO	ISSUE	DATE

TODD HALL -  
FIRST FLOOR  
PLAN - AREA B



1 FIRST FLOOR PLAN - DOOR SCOPE  
3/32" = 1'-0"

DOOR SCOPE	
###	REMOVE DISPLAY AT ENTRY AND REPLACE DOOR, FRAME AND HARDWARE. PROVIDE NEW GYPSUM SOFFIT AND LIGHTING.
###	REPLACE DOOR, FRAME AND HARDWARE.
###	EXISTING FRAME TO REMAIN. REPLACE DOOR AND HARDWARE.
###	EXISTING DOOR AND FRAME TO REMAIN. REPLACE HARDWARE.



2021 DOOR REPLACEMENT

LINCOLNWOOD SD 74  
6850 N. East Prairie Road, Lincolnwood, IL 60712

NO	ISSUE	DATE
•	•	•
•	•	•
•	•	•
•	•	•
•	•	•

**RUTLEDGE HALL - FIRST FLOOR PLAN**

**A1.30**

20041

COPYRIGHT 2019, STUDIOGC, INC.



① SECOND FLOOR PLAN - DOOR SCOPE  
3/32" = 1'-0"

DOOR SCOPE	
###	REMOVE DISPLAY AT ENTRY AND REPLACE DOOR, FRAME AND HARDWARE. PROVIDE NEW GYPSUM SOFFIT AND LIGHTING.
###	REPLACE DOOR, FRAME AND HARDWARE.
###	EXISTING FRAME TO REMAIN. REPLACE DOOR AND HARDWARE.
###	EXISTING DOOR AND FRAME TO REMAIN. REPLACE HARDWARE.



2021 DOOR REPLACEMENT

LINCOLNWOOD SD 74  
6850 N. East Prairie Road, Lincolnwood, IL 60712

NO	ISSUE	DATE
.	.	.
.	.	.
.	.	.
.	.	.
.	.	.
.	.	.
.	.	.
.	.	.
.	.	.

RUTLEDGE HALL - SECOND FLOOR PLAN

A1.40