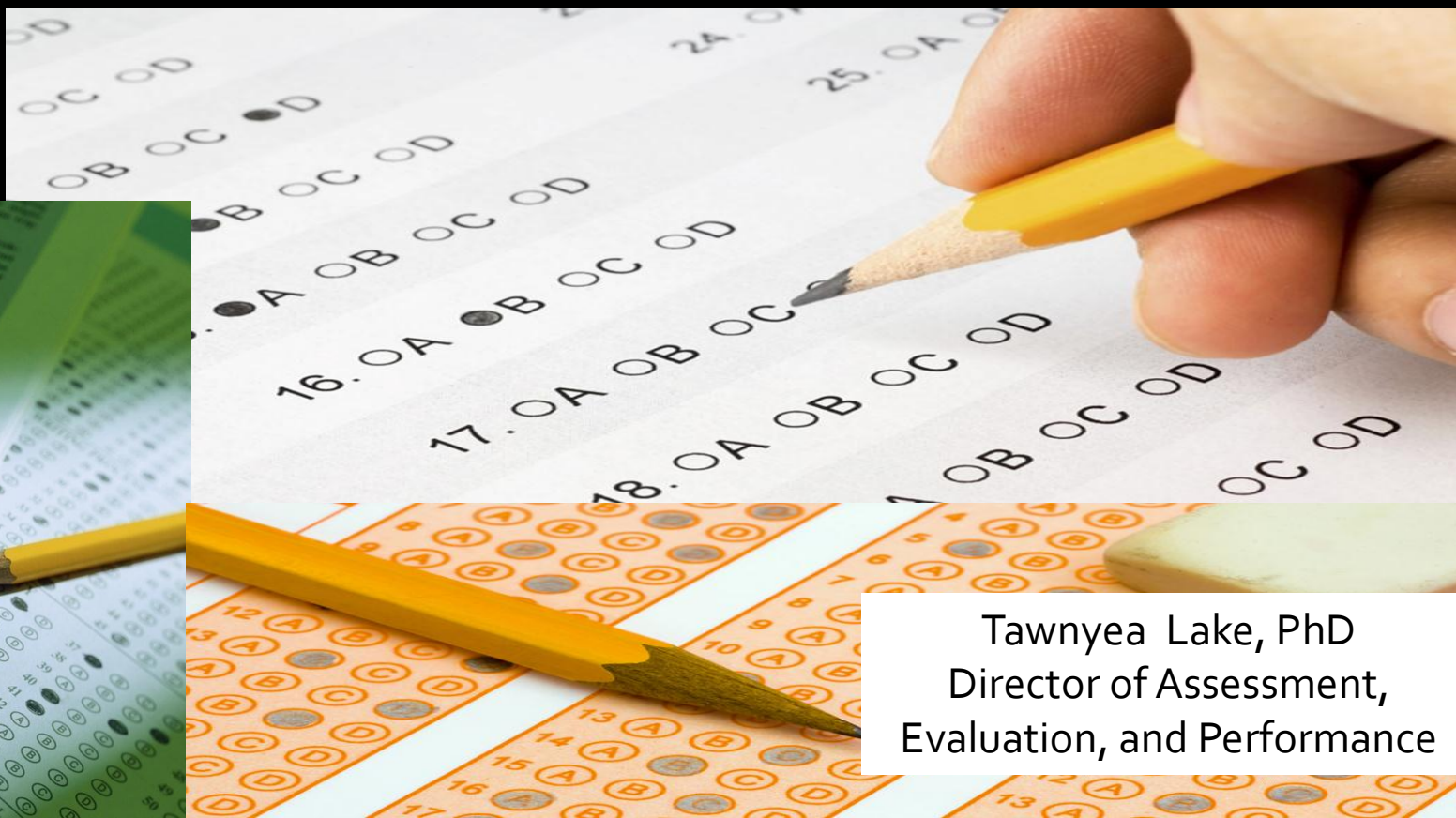


# ACT Summary Report Graduating Class of 2012



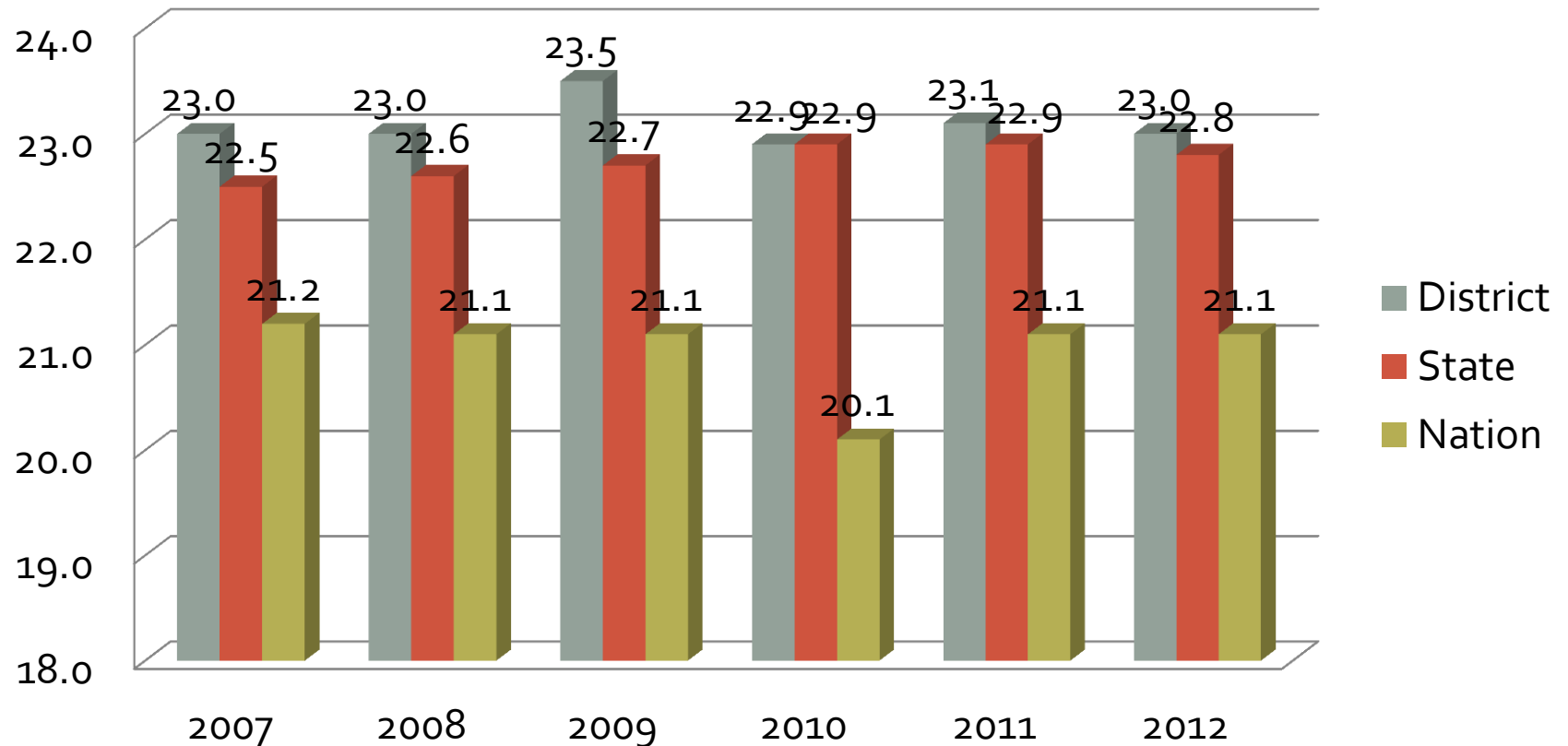
# ACT Basics

---

- Curriculum-based measure that provides a readiness indicator for college-level work
- Tests achievement in 4 areas:
  - English                      College English
  - Math                         College Algebra
  - Reading                     College Social Science
  - Science                     College Biology

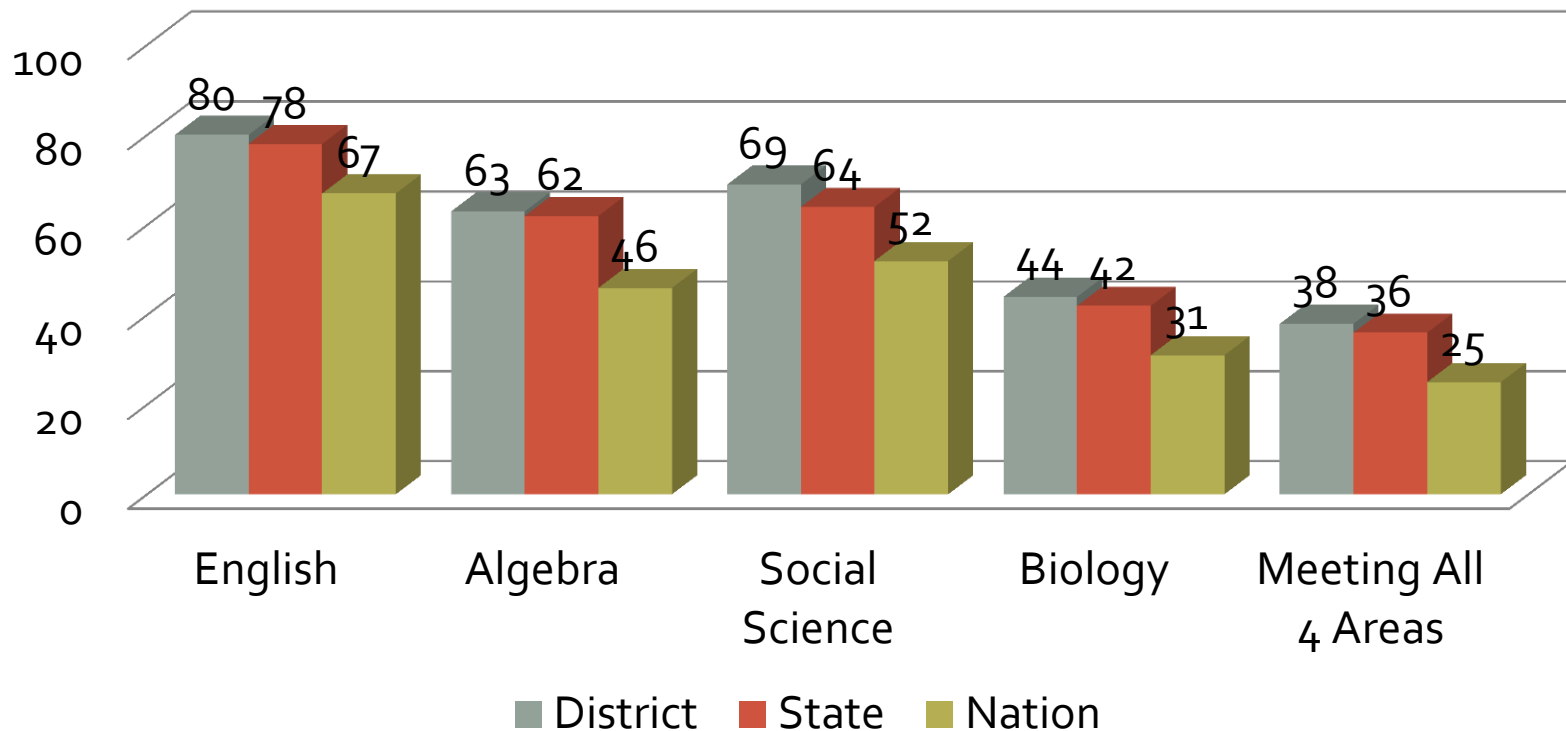
# ACT Results

## Composite Scores Over Time



# ACT Results

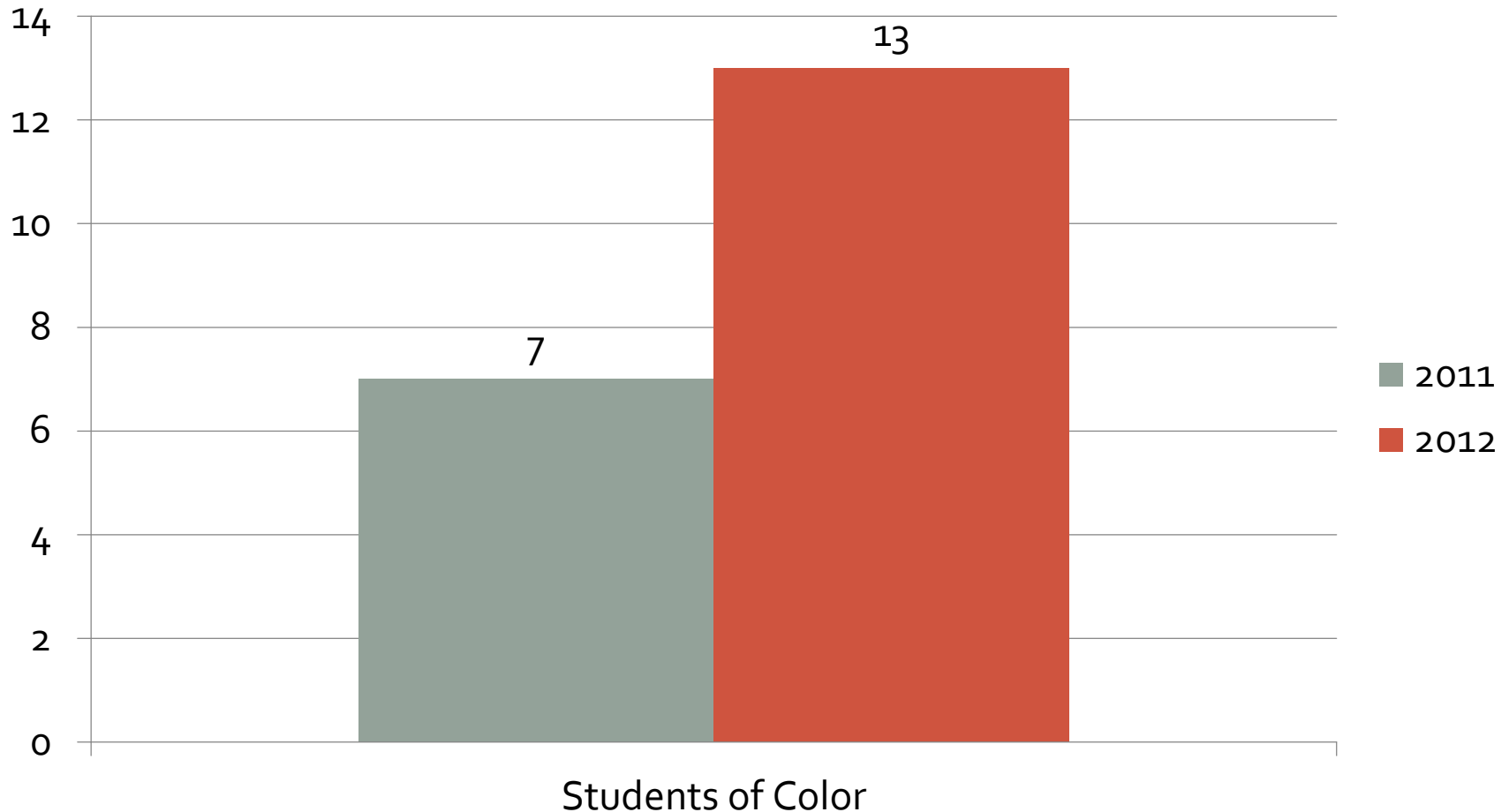
Percent of Students Ready  
for College-Level Coursework



# ACT Themes

- Duluth students were above the state and well-above the nation in percent of students meeting college readiness benchmarks in:
  - English Composition
  - College Algebra
  - Social Science
  - Biology
  - All four areas

# Percent of Children of Color Taking ACT



# Composite Scores By Ethnicity

	2011	2012
All Students	23.1	23.0
Black/African American	20.3	17.0
American Indian/ Alaskan Native	18.5	20.0
White	23.3	23.2
Hispanic/Latino	19.9	21.2
Asian	23.4	25.5
Native Hawaiian/ Other Pacific Islander		23.0
Two or more races	19.4	23.1
Prefer not to respond/ No response	22.8	25.2

# ACT Themes

- Students who take more advanced courses “Core or More” have substantially higher ACT composite scores
  - Core or More = 4 or more years of English and 3 or more years each of math, social studies, natural science
- Ex: Students who take more advanced math courses (in addition to Algebra 1, Algebra 2, Geometry) substantially increase their ACT math score
  - Of the Duluth students taking 3 or more years of math beyond Algebra I, Algebra II, and Geometry (Trigonometry and Calculus, for example), 96% were considered college ready
  - Of the Duluth students who reported taking fewer than 3 math courses, only 2% were considered college ready



# ACT Themes

---

- To increase college readiness, ACT recommends the following:
  - Increase access for students to take the ACT
  - Make core or more a curriculum focus
  - Make sure the students are taking the right kind of courses early
  - Evaluate the rigor of courses

# Questions?

---

Tawnyea L. Lake, PhD  
Director of Assessment, Evaluation,  
and Performance

[tawnyea.bolme-lake@duluth.k12.mn.us](mailto:tawnyea.bolme-lake@duluth.k12.mn.us)

(218) 336-8700 ext. 1027