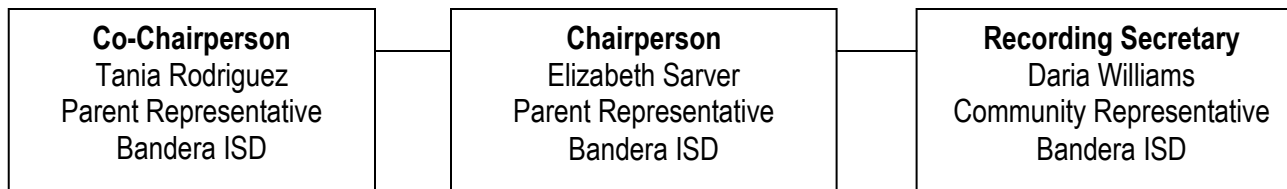


Education Service Center, Region 20 Tri - County Head Start Policy Council Organizational Chart



Bandera ISD	Devine ISD	Hondo ISD	Lytle ISD	Medina Valley ISD	Natalia ISD
Roxanna Stull Alternate	Vacant Parent Representative	Melisa Joyner Parent Representative	Jennifer Tovar Parent Representative	Susan Sandoval Parent Representative	Ashley Gomez Parent Representative
	Vacant Parent Representative	Rita Rios Parent Representative	Maria Hernandez Parent Representative	Melissa Smith Parent Representative	Amber Marrs Parent Representative
	Vacant Community Representative	Tessa Shea Todd Community Representative	Vacant Community Representative	Emily Carnes Community Representative	Vacant Community Representative
	Vacant Alternate	Josephine Gauna Alternate	Adelaida Soria Alternate	Maria Botello Alternate	Vacant Alternate

Each school district has two parent representatives, one community representative and one alternate. The voting weight is equal across all five school districts.

Devine ISD has struggled with parent attendance at parent meetings. Staff has tried various ways to engage parents so there will be more motivation to be a part of Policy Council. Staff will continue to identify parent barriers for participation and alter program scheduling as necessary.