



Brownsville Independent School District

Curriculum Committee Meeting
June 11, 2019
5:30 p.m.



Expansion of Proposed Academic Programs

Initial Planning Phase
PK-12 Grade

Projected Academic Initiatives Pre-K - 5

Enrichment Academies/STEAM

Every school become a specialized magnet academy

- Ben Brite- Lopez
- Castaneda-porter
- Egly – Hanna
- Pena – Rivera
- Pullam – Veterans
- Russell - Pace

Projected Budget Resources:

- \$5,000- Professional Development
- \$7,000- Curriculum Writing
- \$90,000- General Materials
- Historias Americanas Grant to engage teachers in Place-Based-Mexican American Studies in the RGV (K-12)

High Performing Campuses/PBE

Encourage them to expand into Placed Based Learning Academies

- Environmental Studies
- International Studies (Language and Culture)

Projected Budget Resources:

- \$6,000-Transportation
- \$2,000-Instructional Supplies

Priority Campuses/SGS

Identify priority schools based on 18-19 scores

Develop a plan of action between C & I and campus

Identify additional funding

Leadership Coaching – Region One

Additional STAAR Training Bilingual and Special Education Teachers

Projected Budget Resources:

- Increase Blended Learning

Proposed Specialized Academies 6-8

Enrichment Schools

Stillman, Oliveira, Lucio & Vela (STEM)

Will become STEAM Schools

- Coding
- Robotics
- Electric Green Car Challenge
- Arts
- Theater Arts

Projected Budget Resources:

- Historias Americanas Grant to engage teachers in Place-Based-Mexican American Studies in the RGV (K-12)

High Performing

Expand in the electives opportunities in Fine Arts and Technology

Projected Budget Resources:

- Title IV Well-Rounded
- Increased Student Allotment- State Compensatory/Federal for the 2019-2020 school year

Priority Middle Schools

1. Categorical funds will support supplemental personnel
2. Targeted Professional Development
3. Technology Support Accelerate Progress

Projected Budget Resources:

- Innovative Proposals being submitted by campus principals
- Mega-Bite District continues
- \$5,000- Professional Development
- \$7,000- Curriculum Writing
- \$90,000- General Materials

Proposed Specialized Programs 9-12

Enrichment:

Mariachi Bands

- Currently at Lopez

Interested-

- Pace
- Porter
- Hanna

Expanding College and Career Initiatives:

Expanding Walk for the Future

College Application

Continuing to expand CTE Pathways:

ECHS – PTECH

- 2 High Schools completed planning year - pending notification about P-TECH designation
- Apply for P-TECH planning grants (2019-2020)

PLTW COMPUTER SCIENCE – Cyber Security

2018-2019 – Pace ECHS

Program Expansion (2019-2020): Hanna ECHS, Porter ECHS, Rivera ECHS, Veterans Memorial ECHS

Priority Schools:

Identify priority schools based on 18-19 scores

Develop a plan of action between C & I and campus

Identify additional funding

Leadership Coaching – Region One

Additional EOC Training ESL and Special Education Teachers

Projected Budget Resources:

- Title IV Funding \$25,000 Per Campus
- Historias Americanas Grant to engage teachers in Place-Based-Mexican American Studies in the RGV (K-12)

Projected Budget Resources:

- Expanding because of change of model
- Expansion of Associated Degrees
- ECHS Dual Enrollment Budget needed to cover expenses
- Increase participation of At-risk

Projected Budget Resources:

- Categorical funding



ECCHS, PTECH and DUAL Credit

2019-2020

Project Lead The Way

COMPUTER SCIENCE – Cyber Security

Pace ECHS (2018-2019)

Program Expansion (2019-2020): Hanna ECHS, Porter ECHS, Rivera ECHS,
Veterans Memorial ECHS

Career & Technical Student Organizations (CTSOs)

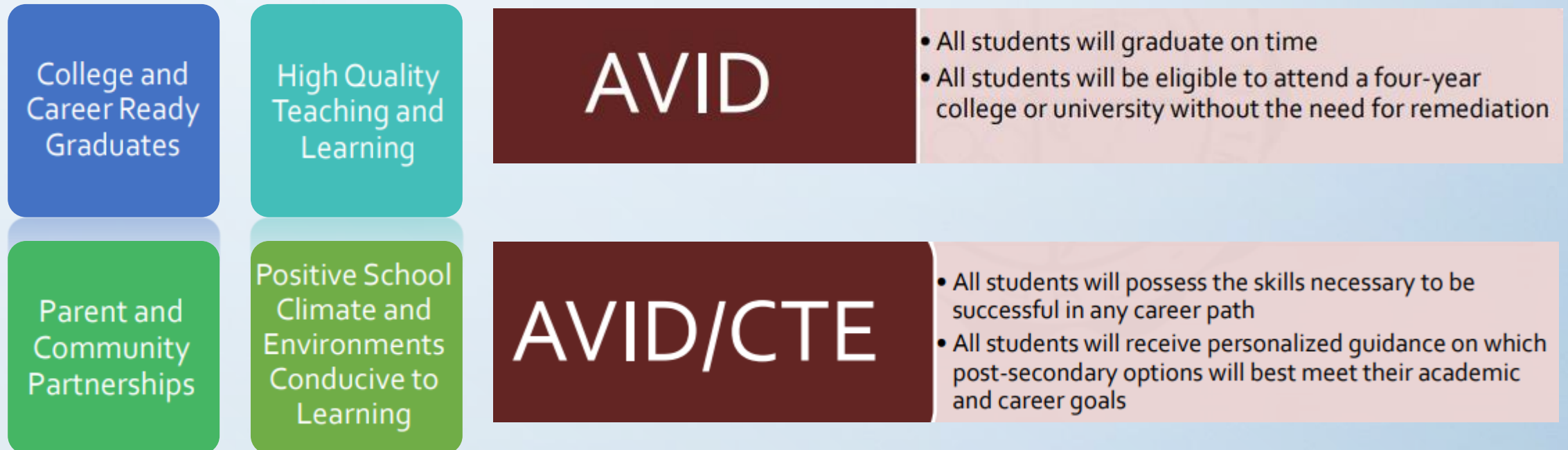
CTE Extra-curricular Activities

- HOSA
- BPA
- TAFE
- FCCLA
- SkillsUSA
- TSA
- FFA – Only at Lopez ECHS (Agriculture Program)

District Improvement Plan – Goal 1

BISD students will receive educational opportunities that will produce well-rounded graduates who are prepared for the future, are college/career ready, and are responsible, independent citizens. (Board Goal #1 and TEA Ch. 4 Objectives 2, 4, 5, 7, and 11).

AVID/CTE has a direct connection with District Goals:



Project Lead The Way - Gateway

Middle School Expansion (Proposal)

PLTW Summer 2020 Training



P-TECH Update: Porter and Hanna

Submitted:

- 1) P-TECH Designation Applications (Pending Notice – June 2019)
- 2) P-TECH Success Grant (Pending Notice – June/July 2019)

Proposed 2019-2020:

- 1) Apply for additional P-TECH Planning Grants

CTE Dual Credit Programs

- Texas Southmost College:
 - 1) Automotive Technology
 - 2) Automotive Collision
 - 3) Construction Technology
- Proposed w/Texas Southmost College:
 - 1) Electrical Technology
 - 2) HVAC & Refrigeration
- Texas State Technical College:
 - 1) Architecture – Veterans Memorial ECHS

Guidance & Counseling

Proposed continued IHE MOU

Talent Search TRIO Grant Program

UTRGV

- Pre college academic, career, and financial aid counseling / completion services
- Provided for eligible and enrolled participants in all BISD Middle School and Comprehensive High Schools
- Monthly meetings on campus
- Weekend and summer activities

Ameri Corp

UTRGV

- Services and resources to assist parents and students with necessary steps relating to test preparation, financial aid and admission applications for college acceptance
- Provided for all comprehensive High Schools
- UTRGV students (6 – 8) are assigned to ECHS and work in GO Centers supervised by ECHS Counseling staff August – May every day of the week

ADVISE TX


Texas A&M

- IHE admissions and financial aid completion assistance for students' college acceptance
- Provided for all comprehensive High Schools
- Texas A&M recent graduate is assigned to each ECHS and works in GO Centers supervised by ECHS Counseling staff August – May every day of the week



Brownsville Independent School District ECHS/Dual Enrollment

- *All 7 BISD high schools are Early College High Schools (ECHS)*
- *BECHS follows the stand alone model*
- *All others are currently:*
 - *Grades 10-12 Wall to Wall Model*
 - *Grade 9 – School within a School Model*
- *The transition from models is a four year process*
- *Two campuses will be adding P-TECH (Pathways in Technology) ECHS opportunities for the 2019-2020 school year*



ECHS/Dual Enrollment Student Participation

ECHS Campus	TSC	UTRGV
Hanna	722	7
Porter	453	3
Pace	751	3
Rivera	685	1
Lopez	320	10
Veterans	989	33
BECHS	104	368
TOTALS	4,392	415



ECHS/Dual Enrollment Courses/Sections per Campus

ECHS Campus	TSC- Courses/Sections	UTRGV
Hanna	18/70	2
Porter	17/37	0
Pace	23/68	0
Rivera	26/66	0
Lopez	17/30	0
Veterans	19/92	1
BECHS	1/8	30
TOTALS	121/371	33



ECHS/Dual Enrollment Hours

Early College High School	Number of Credit Hours
Hanna	14,283
Porter	13,958
Pace	14,235
Rivera	14,205
Lopez	14,541
Veterans	14,220
TOTAL	85,442

ECHS/Dual Enrollment Costs

Campus	Tuition	Textbooks*	Teacher Stipends	Adjuncts	Total Cost per Campus
Hanna	\$3,610	\$13,428	\$24,000	\$23,027.34	\$64,065.34
Porter	\$2,265	\$2,265	\$18,000	\$13,384.12	\$35,914.12
Pace	\$3,755	\$9,411	\$39,000	\$0	\$52,166.00
Rivera	\$3,425	\$17,369	\$42,000	\$0	\$62,794.00
Lopez	\$1,600	\$14,894	\$18,000	\$7,925.27	\$44,419.27
Veterans	\$4,945	\$14,189	\$25,500	\$0	\$42,634.00
BECHS	\$520.00	\$0	\$3,000	\$12,750	\$16,270.00
TOTAL	\$20,120	\$71,556	\$169,500	\$57,086.73	\$318,626.73

Textbook amount is what was spent per campus. The district spent an additional \$110,562.00 on textbooks that were distributed to all campuses. Total spent on textbooks = \$195,262

Costs do not include summer school 2018-2019. Currently, there are 923 students enrolled for summer school I and II at TSC. Tuition = \$4,615. Estimated Textbook costs = \$10,000. Adjuncts = \$114,750

Grand Total (Estimate) for Summer School 2019 = \$129,365

Grand Total = \$558,553.73