



NAVARRO
INDEPENDENT SCHOOL DISTRICT

NAVARRO ISD

**Drives, Parking,
and Playgrounds**

Board Design
Update

12/16/2024



Agenda

- 1 — PARKING AND DRIVEWAY UPDATE
- 2 — PLAYGROUND DESIGN AND
PLAYSCAPES
- 3 — PLAYGROUND SHADE STRUCTURES

Bond Project Goals

1

DRIVEWAYS

Reconfigure Driveways at Navarro Elementary and Intermediate Schools to move vehicle queuing off Link Rd.

2

PARKING LOTS

Connect Parking Lots between Navarro Annex, Elementary, and Intermediate Schools for improved flow and increase in available parking.

3

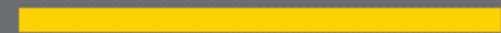
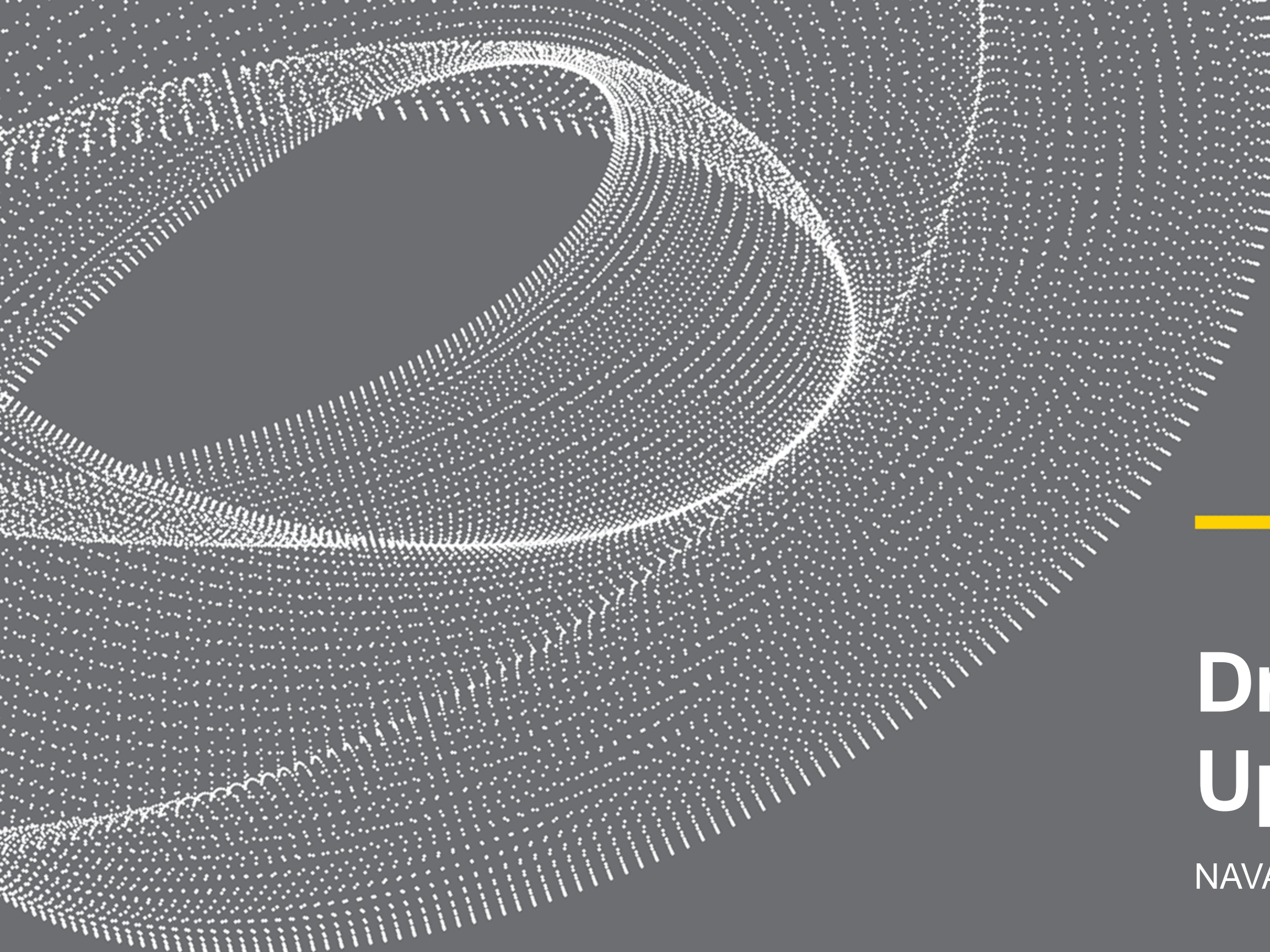
PLAYGROUND EQUIPMENT

Replace Playground Equipment at Navarro Elementary and Intermediate Schools with age-appropriate systems for future.

4

DISTRICT PLAYGROUND STANDARDS

Develop new Playground Standards for future Elementary School Campuses.



Driveway & Parking Updates

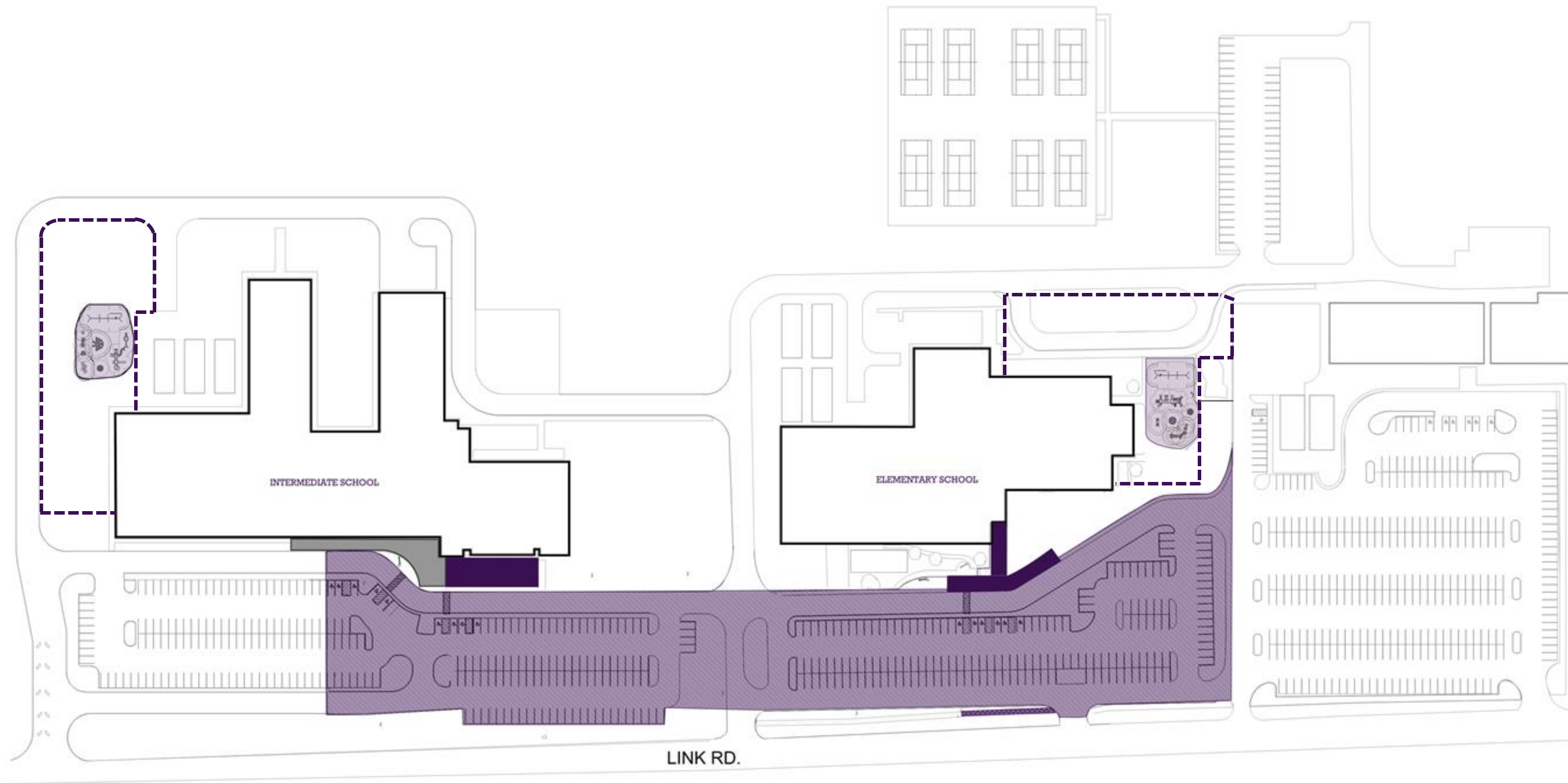
NAVARRO ISD

Navarro ISD – Existing Layout



■ EXISTING CANOPY - - - - - DEMOLITION / MODIFIED PARKING LOTS

Navarro ISD – Proposed Layout



- EXISTING CANOPY
- NEW CANOPY
- UPDATED DRIVE AND PARKING
- UPDATED FLATWORK
- EXTENTS OF OUTDOOR PLAY
- UPDATED PLAYGROUND

Navarro ISD – Existing Conditions – Drop-Off Canopies



Navarro ISD – Elementary School



EXISTING



PROPOSED

Navarro ISD – Elementary School



EXISTING



PROPOSED

Navarro ISD – Intermediate School



EXISTING



PROPOSED

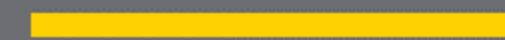
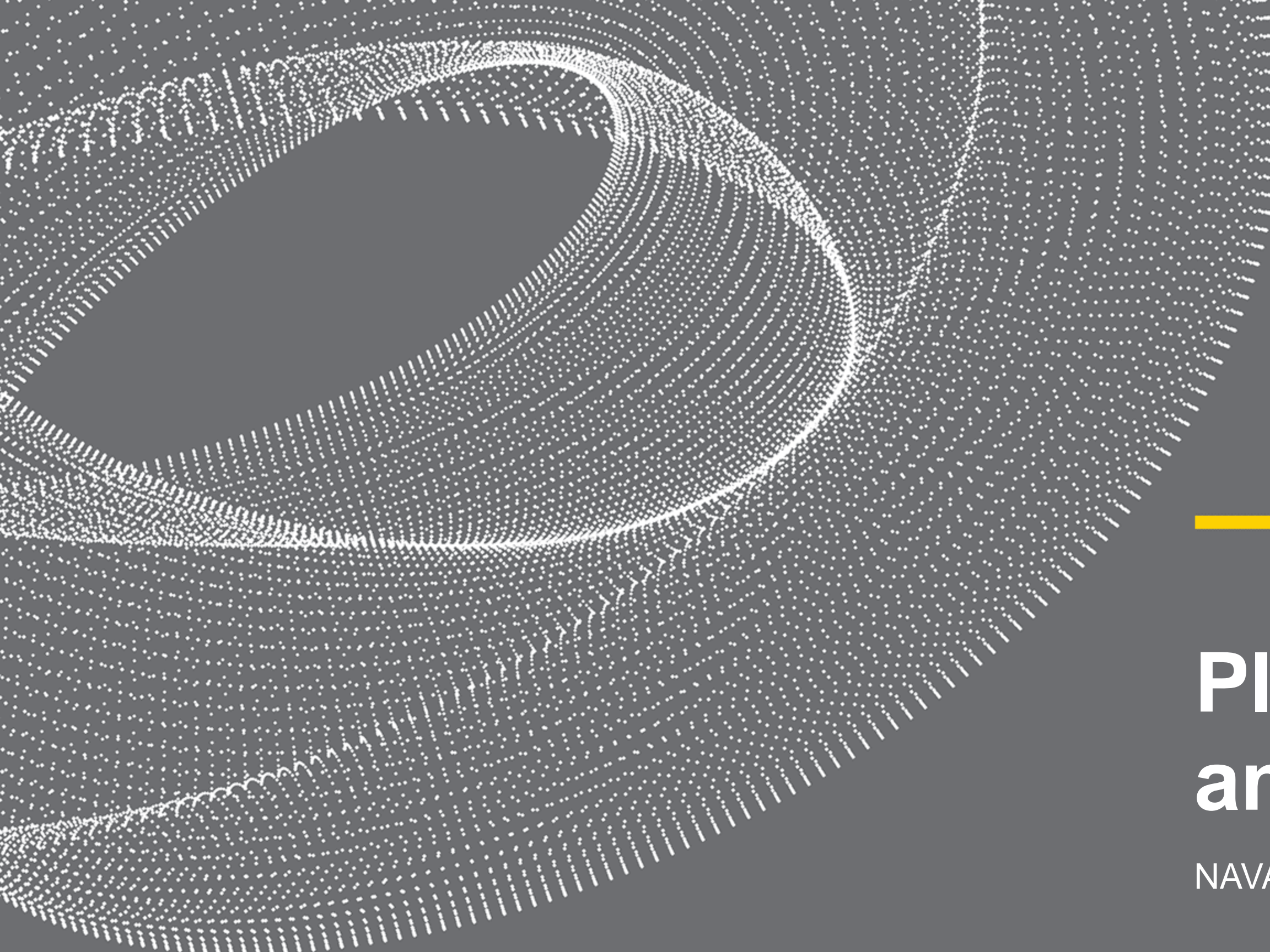
Navarro ISD – Intermediate School



EXISTING



PROPOSED



Playground Design and Playscapes

NAVARRO ISD

Navarro Elementary School – Kinder Playground

Navarro ISD PK-1 Playground Seguin, TX

FOR KIDS AGE
2-5
YEARS

AGE GROUP: 2-5
ELEVATED PLAY ACTIVITIES - TOTAL: 10
ELEVATED PLAY ACTIVITIES ACCESSIBLE BY TRANSFER: 0 REQ'D 5
ELEVATED PLAY ACTIVITIES ACCESSIBLE BY RAMP: 0 REQ'D 0
GROUND LEVEL ACTIVITY TYPE: 8 REQ'D 3
GROUND LEVEL QUANTITY: 22 REQ'D 3

Child Capacity: 121

3' DECK 7185029
3' DECK 7185029
3' DECK 7185029
3' DECK 7185029
3' DECK 7185029
4' DECK 7185019

2-LG STD SWG FRAME ONLY
8' TR 2 SEATS REQ GV 2903
2-LG STD ADD-A-BAY
8' TR 2 SEATS REQ GV 2903X
2-LG STD ADD-A-BAY
8' TR (2) GEN STS REQ GV 2903HHX

BUDDY ROCKER OPTIONAL BACK PANEL 6087A2B
BUDDY ROCKER 6087
BUDDY ROCKER OPTIONAL BACK PANEL 6087A2B

SMALL HOP ROCK 494124
MEDIUM HOP ROCK 494125
LARGE HOP ROCK 494126

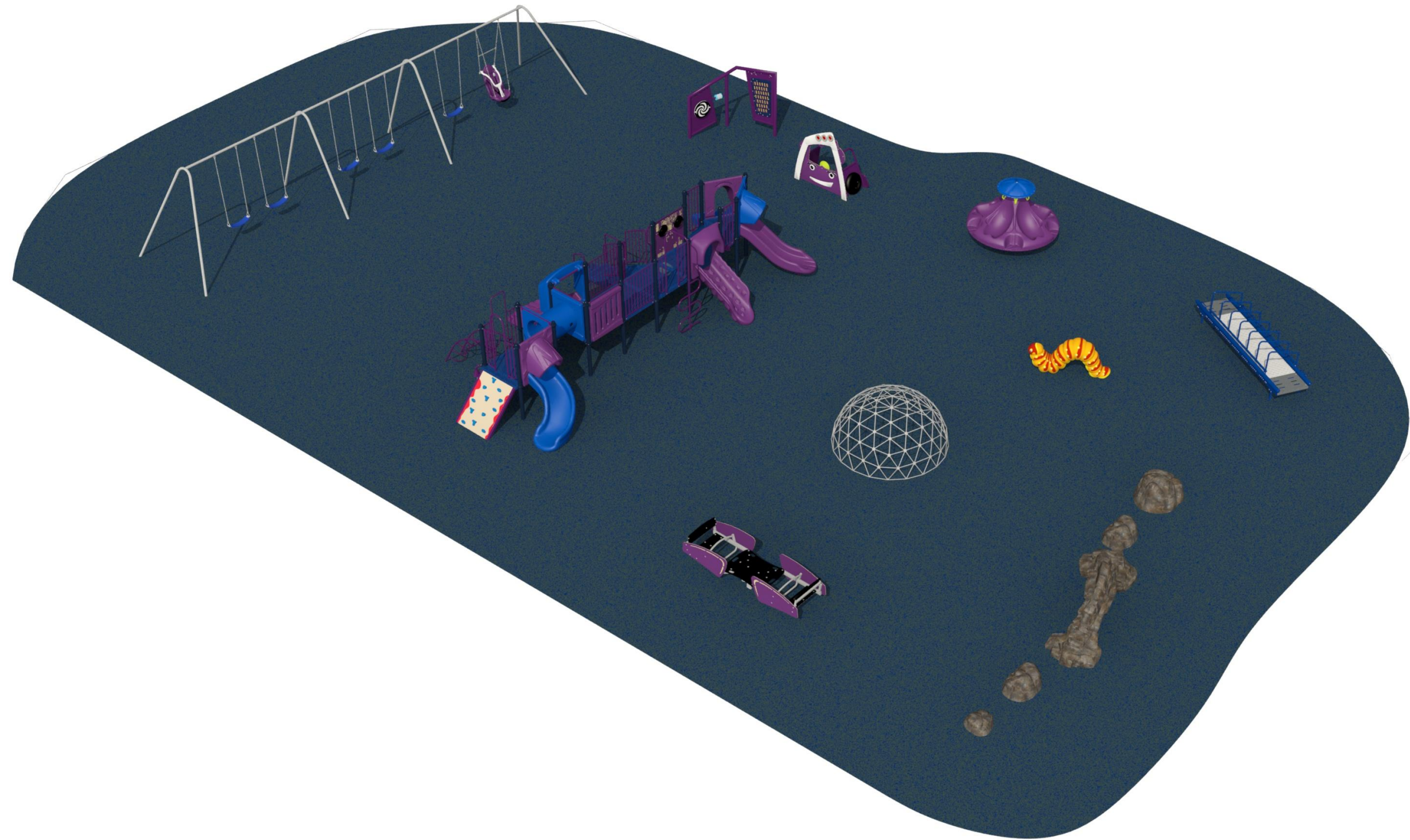
8' BELT SEAT W/CHAIN 2840
8' BELT SEAT W/CHAIN 2840
8' BELT SEAT W/CHAIN 2840
8' BELT SEAT W/CHAIN 2840
8' BELT SEAT W/CHAIN 2840
1/2 CALYPSO 2 DRUM SIDE-BY-SIDE (BELOW DECK) 71871513HB
LOOP SLIDE 718700 TRANSFER POINT SLIDE 718968
BELL 718796P1
45 DEG SLOPED CLIMBING WALL 71875734
VIEW WALL 718816
PILOT WALL 7187147
L-SLIDE GROOVE 7189071
SPIDER CLIMBER 718908
TOT ROCK CLIMBER 718877
GROOVE II SLIDE 7186384
8' GEODESIC CLIMBER GALV 401
INCHWORM CLIMBER MRTTP2030M
IGUANA ROCK 494111
TEN SPIN 304

SWG PART INCLUSIVE SEAT W/CHAIN FOR 8' TR 2740
SWG PART HARNESS 8' TR 2-5 2740H
MM DYNAMICS LAB 4533
MINI CITY TRUCK MR0881
MM MOMENTUM CORRIDOR 4535

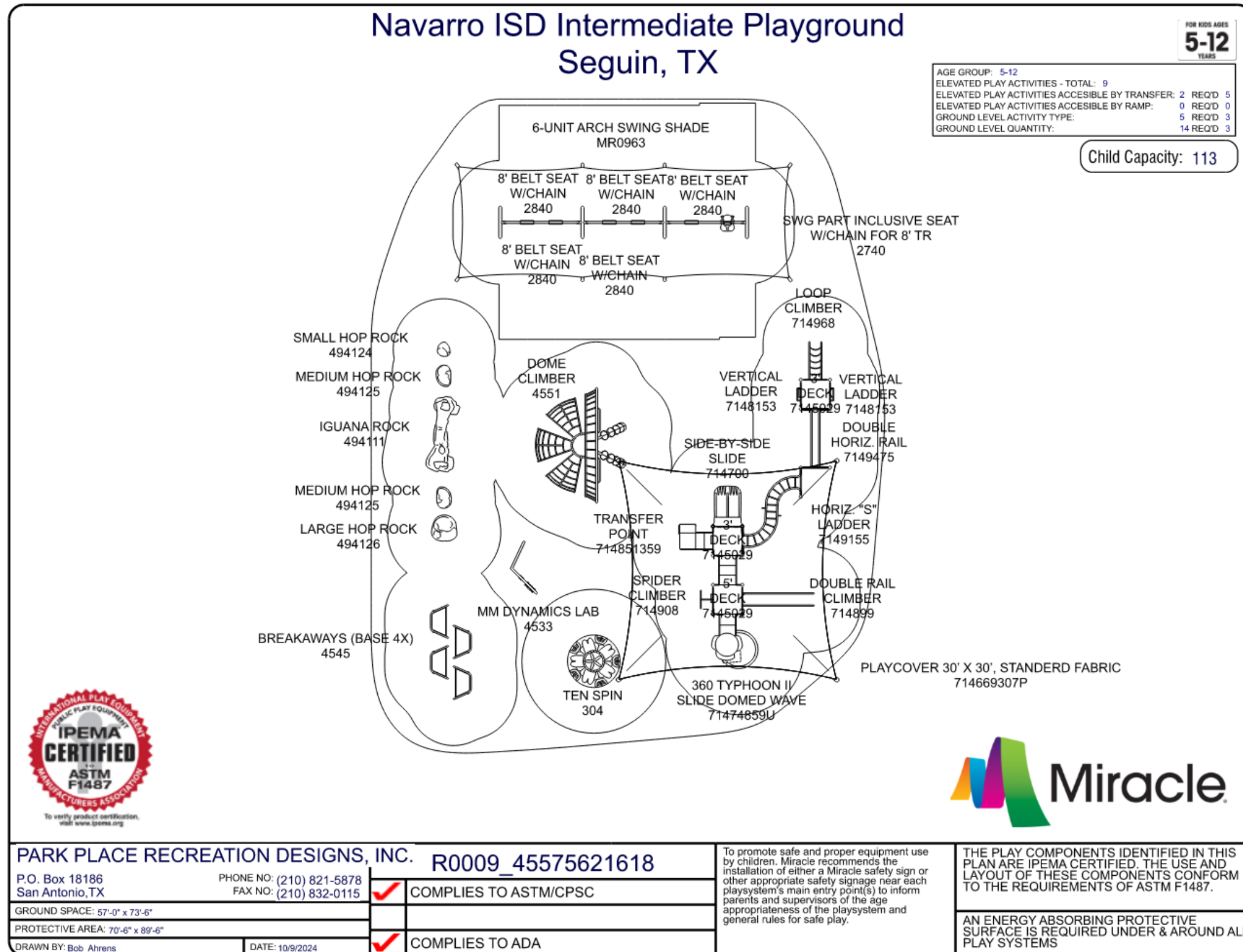
INTERNATIONAL PLAY EQUIPMENT MANUFACTURERS ASSOCIATION
IPEMA CERTIFIED
ASTM F1487
To verify product certification, visit www.ipema.org

Park Place Recreation Designs, Inc. P.O. Box 18186 San Antonio, TX PHONE NO: (210) 821-5878 FAX NO: (210) 832-0115		R0009_45555628314	To promote safe and proper equipment use by children, Miracle recommends the installation of either a Miracle safety sign or other appropriate safety signage near each playsystem's main entry point(s) to inform parents and supervisors of the age appropriateness of the playsystem and general rules for safe play.	THE PLAY COMPONENTS IDENTIFIED IN THIS PLAN ARE IPEMA CERTIFIED. THE USE AND LAYOUT OF THESE COMPONENTS CONFORM TO THE REQUIREMENTS OF ASTM F1487.
GROUND SPACE: 50'-0" x 83'-0" PROTECTIVE AREA: 65'-0" x 103'-6" DRAWN BY: Mike Carlyon	DATE: 10/14/2024	<input checked="" type="checkbox"/> COMPLIES TO ASTM/CPSC <input checked="" type="checkbox"/> COMPLIES TO ADA	AN ENERGY ABSORBING PROTECTIVE SURFACE IS REQUIRED UNDER & AROUND ALL PLAY SYSTEMS	

Navarro Elementary School – Kinder Playground

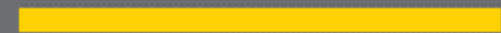
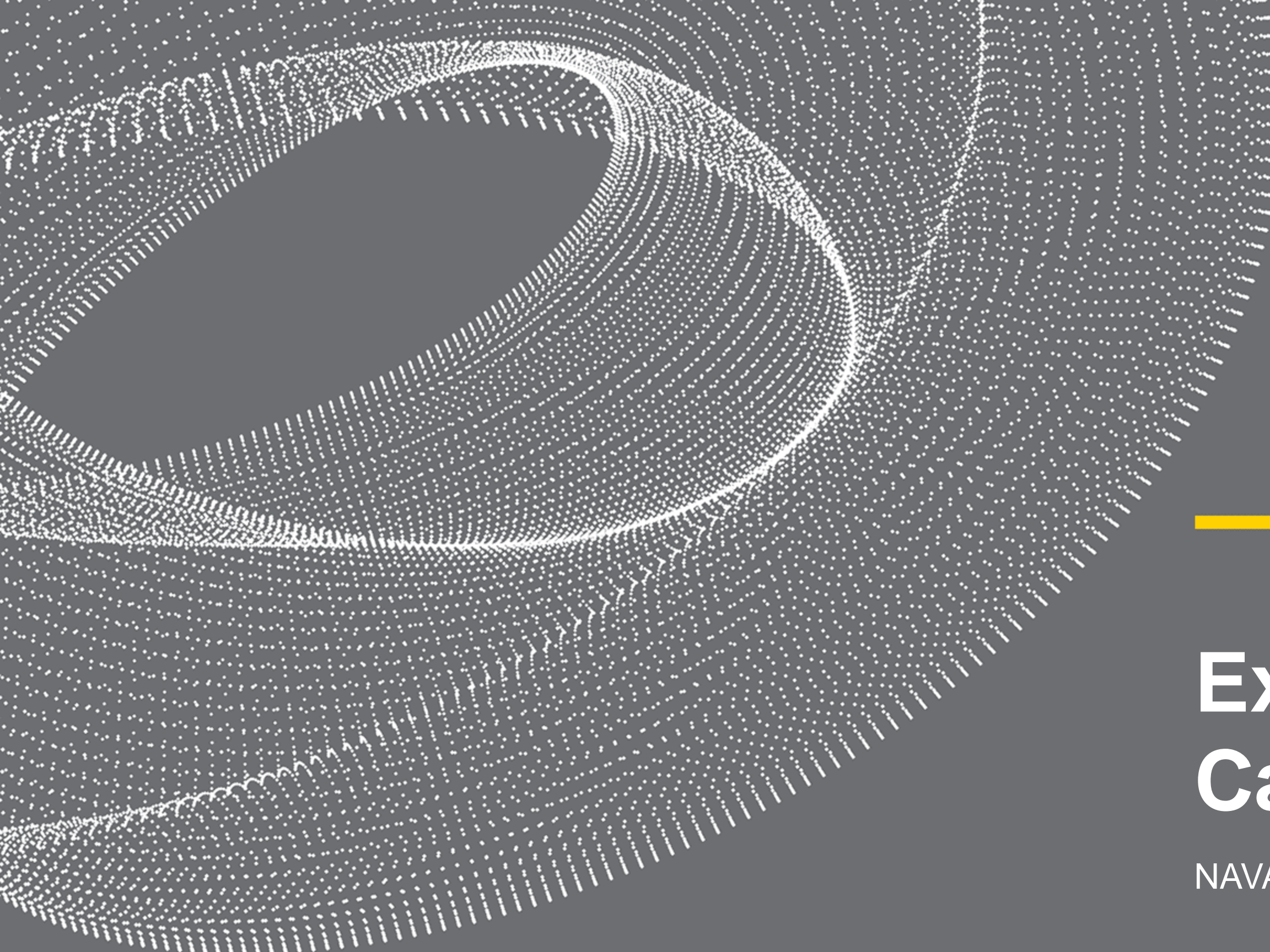


Navarro Elementary School – Upper Playground



Navarro Elementary School – Upper Playground



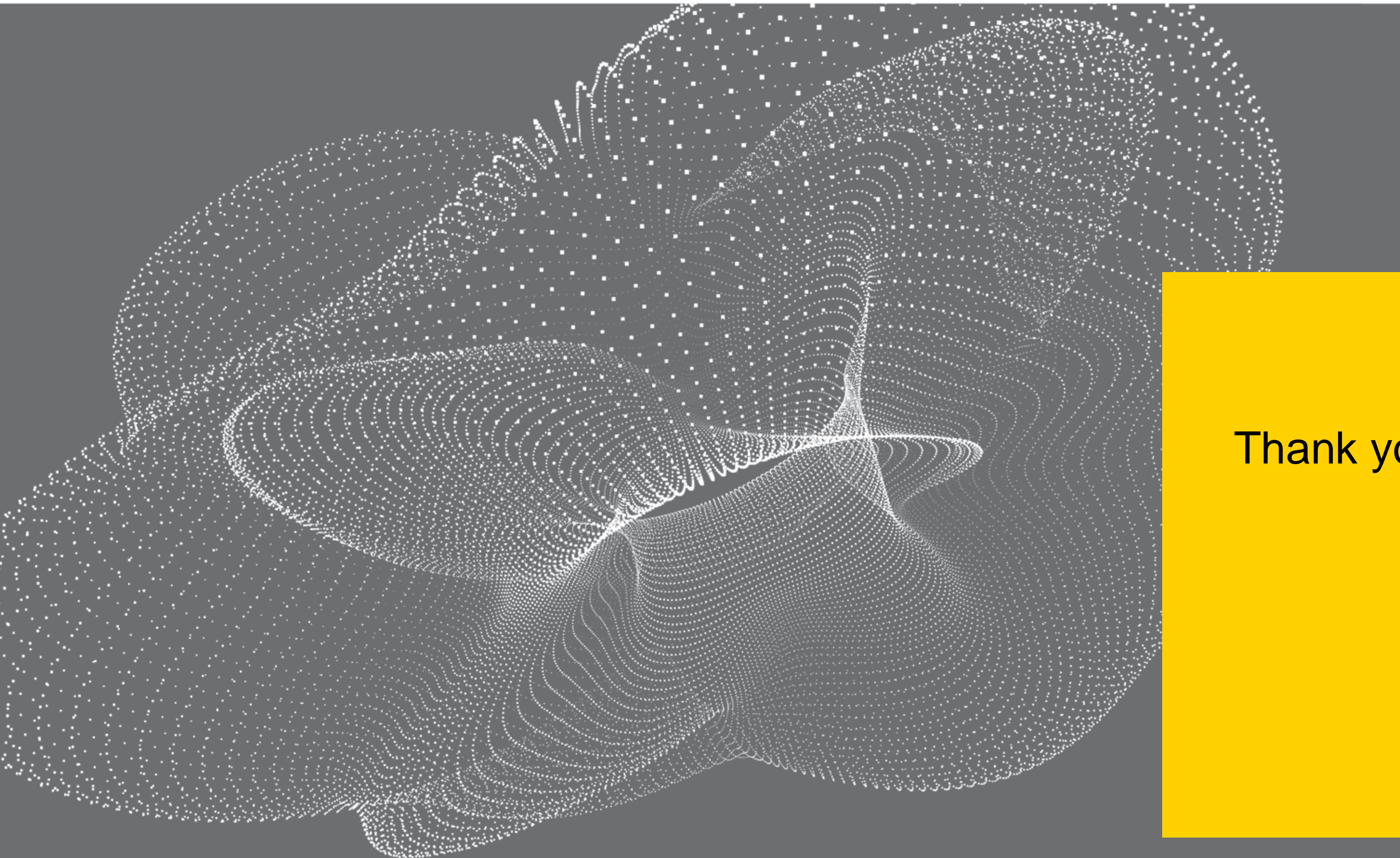


Existing Shade Canopies

NAVARRO ISD

Navarro Elementary School – Existing USAShade Structures





Thank you.