

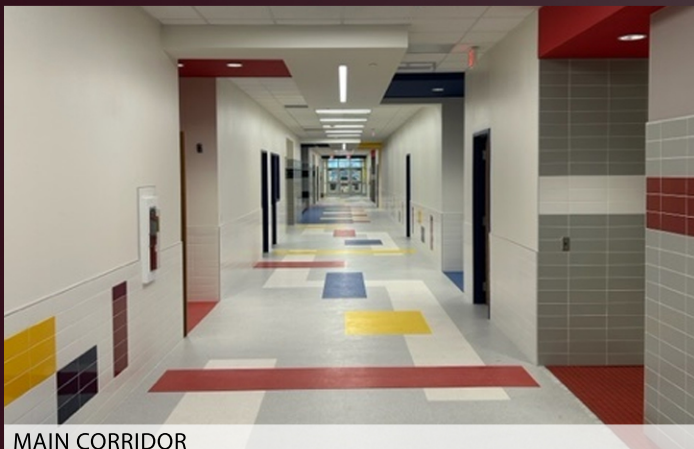
# PROJECT UPDATE

FEBRUARY 2025

## PERKINS EARLY CHILDHOOD & JAGUAR DAYCARE



VIEW LOOKING NORTH



MAIN CORRIDOR



PLAY GYM

### CONSTRUCTION STATUS

#### SITE WORK

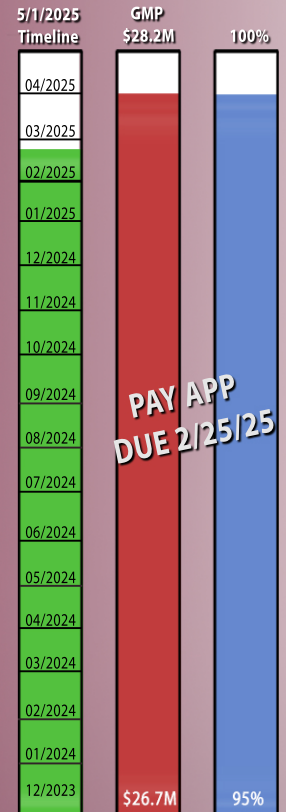
- STRIPING OF EXTERIOR PAVING
- UPCOMING

#### BUILDING

- PLAY GYM FLOORING STRIPED
- OWNER/ARCHITECT PUNCH WALKS

#### LOOKING FORWARD

- KITCHEN TEST COOK
- FURNITURE DELIVERY/INSTALL



Designing Schools . . . With Kids in Mind!

[www.claycomb.net](http://www.claycomb.net)



# PROJECT UPDATE

FEBRUARY 2025

## ADMIN & WAREHOUSE BUILDINGS



VIEW LOOKING NORTH



EXTERIOR WATERPROOFING



INTERIOR FRAMING

### CONSTRUCTION STATUS

#### SITE WORK

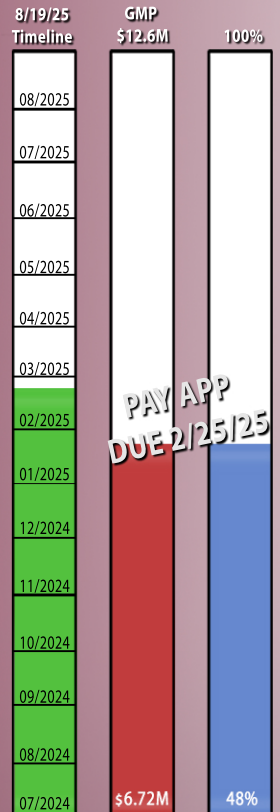
- FIRE LANES SURROUNDING ADMIN COMPLETE
- WEST PARKING PAVING COMPLETE

#### BUILDING

- WAREHOUSE SLAB POURED
- MEP OVERHEAD INSTALL AT ADMIN CONTINUES
- WINDOW FRAMES IN PROGRESS

#### LOOKING FORWARD

- COMPLETION OF ROOFING INSTALL
- STEEL ERECTION AT WAREHOUSE





# PROJECT UPDATE

FEBRUARY 2025

## JACKIE HENDRICKS STADIUM EXPANSION



SITE OVERALL



GRANDSTAND FOUNDATION PROGRESS



FIELD HOUSE FOUNDATION PROGRESS

### CONSTRUCTION STATUS

#### SITE WORK

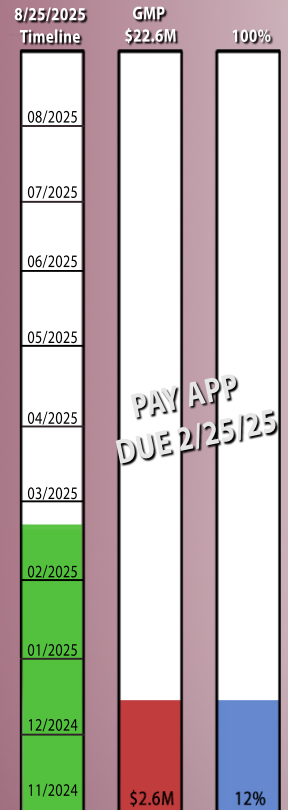
- UNDERGROUND UTILITY INSTALL CONTINUES

#### BUILDING

- PIER INSTALL UNDER GRANDSTAND CONTINUES
- FIELD HOUSE GRADE BEAM INSTALL CONTINUES
- SUBMITTAL AND SHOP DRAWING REVIEW CONTINUES

#### LOOKING FORWARD

- CONTINUATION OF FOUNDATION WORK
- COMPLETION OF BELOW GRADE MEP ROUGH-IN





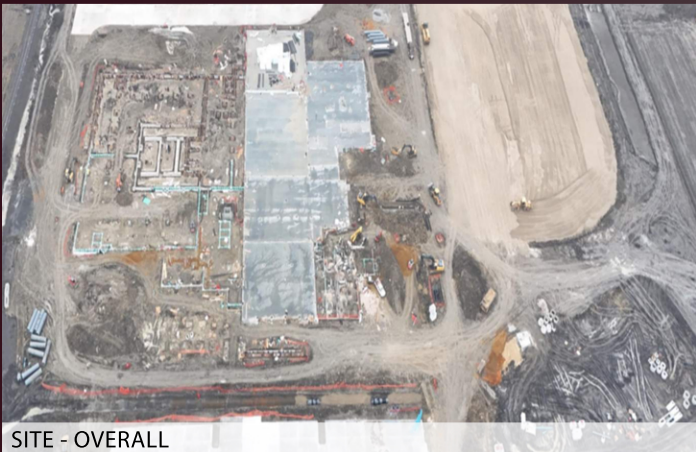
# PROJECT UPDATE

FEBRUARY 2025

## TOM BANSCHBACH MIDDLE SCHOOL



VIEW LOOKING EAST



SITE - OVERALL



STORM SHELTER

### CONSTRUCTION STATUS

#### SITE WORK

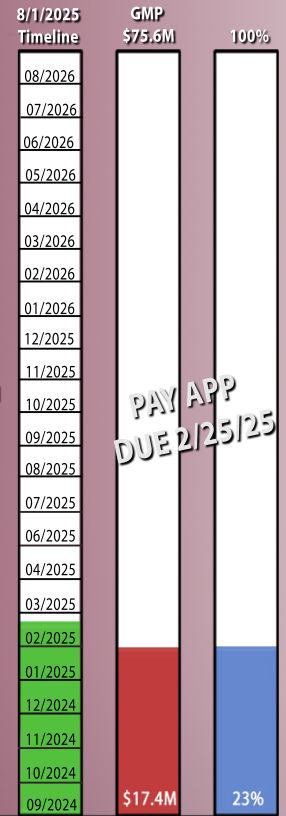
- PHASE 1 FIRE LANE COMPLETE
- UNDERGROUND UTILITIES 75% COMPLETE

#### BUILDING

- FOUNDATION COMPLETE AT AREAS D, E, and 70% AT AREA F
- VERTICAL CONSTRUCTION BEGUN

#### LOOKING FORWARD

- SLAB POURS IN KITCHEN AND CLASSROOM WINGS
- VERTICAL CONSTRUCTION CONTINUES





# PROJECT UPDATE

FEBRUARY 2025

## CARRELL ELEMENTARY SCHOOL



ENTRY RENDER



OVERALL SITE



MEDIA CENTER RENDER

### CONSTRUCTION STATUS

**SITE WORK**

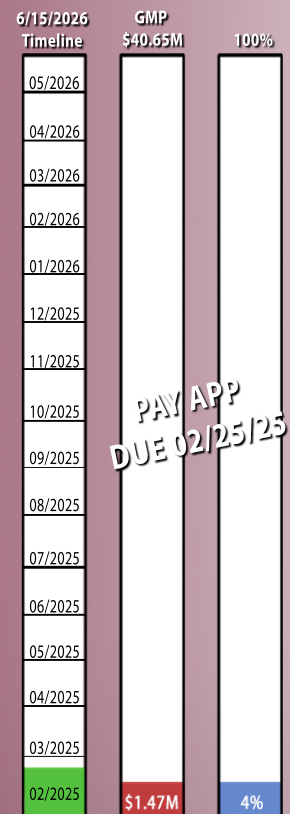
- SITE CUTS/INITIAL SITE GRADING
- STORM UTILITY INSTALLATION BEGAN

**BUILDING**

- GRADE BEAMS AT KITCHEN/CAFETERIA

**LOOKING FORWARD**

- UNDERGROUND ELECTRICAL AT KITCHEN/CAFETERIA



Designing Schools . . . With Kids in Mind!

www.claycomb.net