

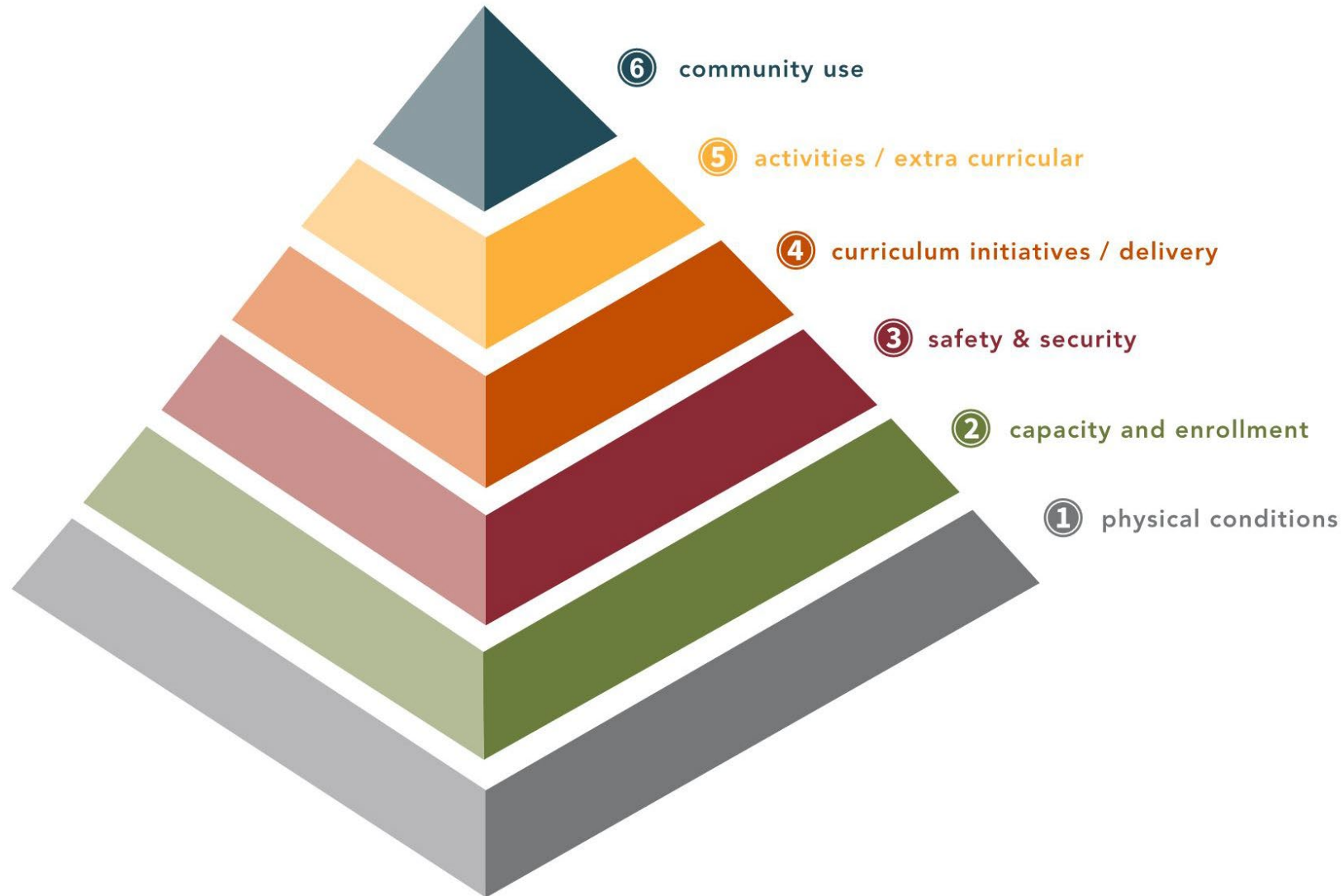
ISD 273

Capacity Study

2023-2024

CAPACITY ANALYSIS

WHY STUDY CAPACITY?



Capacity is the ability of a school facility to house K-12 student programs.

- *Capacity Analysis attempts to quantify the amount of building capacity.*
- *Useful when compared to “Head Count” or number of students.*
- *Sets a standard for a fully functioning school that accommodates anticipated programs.*

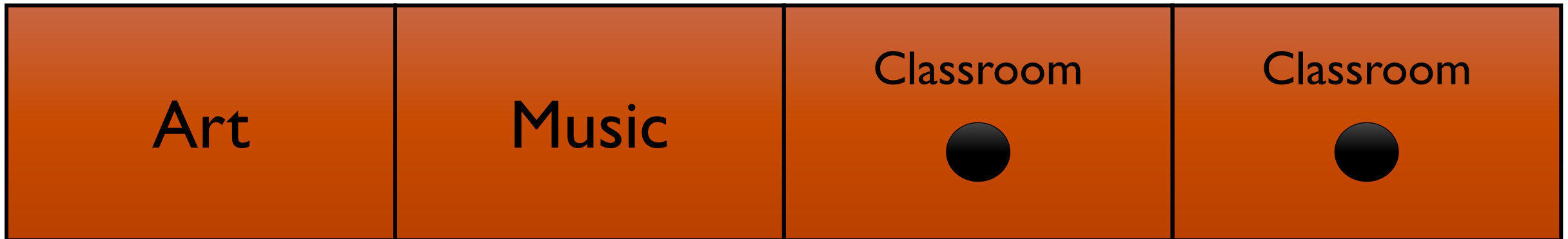
Capacity Overview

- *A change in space use can change capacity.*
- *Assigning additional rooms to Computer Labs, Special Education, and Small Group spaces reduces the building capacity.*
- *Room assignments vary from year to year, and therefore capacity changes every year.*
- *Average number of seats per room is a fundamental component and has a large impact on building capacity.*

District Class Sizes

- *Kindergarten: 20 students (20-24)*
- *1st Grade: 21 students (21-24)*
- *2nd Grade: 21 students (21-25)*
- *3rd Grade: 23 students (23-26)*
- *4th Grade: 24 students (24-27)*
- *5th Grade: 24 students (24-27)*
- *6th to 8th Grades: 28.15 students (28.15 per fte, 336 per grade level)*
- *9th to 12th Grades: 30.9 students (30.9 per fte, 680 per grade level)*

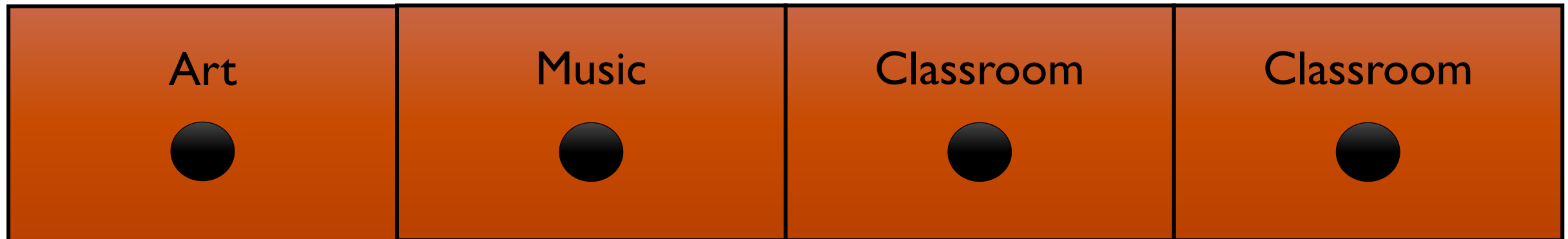
Four Room Schoolhouse: **Elementary School**



Elementary Capacity

2 Classrooms x 24 Students/Classroom = **48** Student Capacity

Four Room Schoolhouse: **Middle School**



Secondary School Capacity

4 Classrooms x 28.15 Students/Classroom = 112.6 Gross Capacity
x 75% Efficiency Factor = **84** Students Net Capacity

CAPACITY ANALYSIS

2019 CAPACITY VS. 2024 CAPACITY

2019 Capacity Class Sizes

<u>Grade</u>	<u>Class Size</u>
Kindergarten	24
1 st Grade	24
2 nd Grade	25
3 rd Grade	26
4 th Grade	27
5 th Grade	27
CP	28
6 th – 12 th	27.2
9 th – 12 th	30.9

2024 Capacity Class Sizes

<u>Grade</u>	<u>Class Size</u>
Kindergarten	20
1 st Grade	21
2 nd Grade	21
3 rd Grade	23
4 th Grade	24
5 th Grade	24
CP	28
6 th – 12 th	28.15
9 th – 12 th	30.9

CAPACITY ANALYSIS

DISTRICT-WIDE CAPACITY ANALYSIS

ELEMENTARY CAPACITY (Grades K-5)

	Target Capacity - without potential	Target Capacity - with potential	Previous Study Capacity	Difference between 23-24 and 18-19
Concord Elementary	665	665	765	-100
Cornelia Elementary	532	582	612	-80
Countryside Elementary	692	692	594	98
Creek Valley Elementary	532	607	612	-80
Highlands Elementary	520	520	606	-86
Normandale Elementary	596	644	660	-64
Total	3,537	3,710	3,849	-312

MIDDLE SCHOOL CAPACITY (Grades 6-8)

	Target Capacity - 75%	Target Capacity - 80%	Previous Study Capacity	Difference between 23-24 and 18-19
South View Middle School	1,119	1,268	1,225	-106
Valley View Middle School	1,161	1,316	1,248	-87
Total	2,280	2,584	2,473	-193

HIGH SCHOOL CAPACITY (Grades 9-12)

	Target Capacity - 85%	Target Capacity - 90%	Previous Study Capacity	Difference between 23-24 and 18-19
Edina High School	3,047	3,226	2,994	53
Total	3,047	3,226	2,994	53

District Wide Total

8,864 9,520 9,316 -452

Kindergarten	$(5) \times 20 =$	100
1 st Grade	$(5) \times 21 =$	105
2 nd Grade	$(5) \times 21 =$	105
3 rd Grade	$(5) \times 23 =$	115
4 th Grade	$(5) \times 24 =$	120
5 th Grade	$(5) \times 24 =$	120

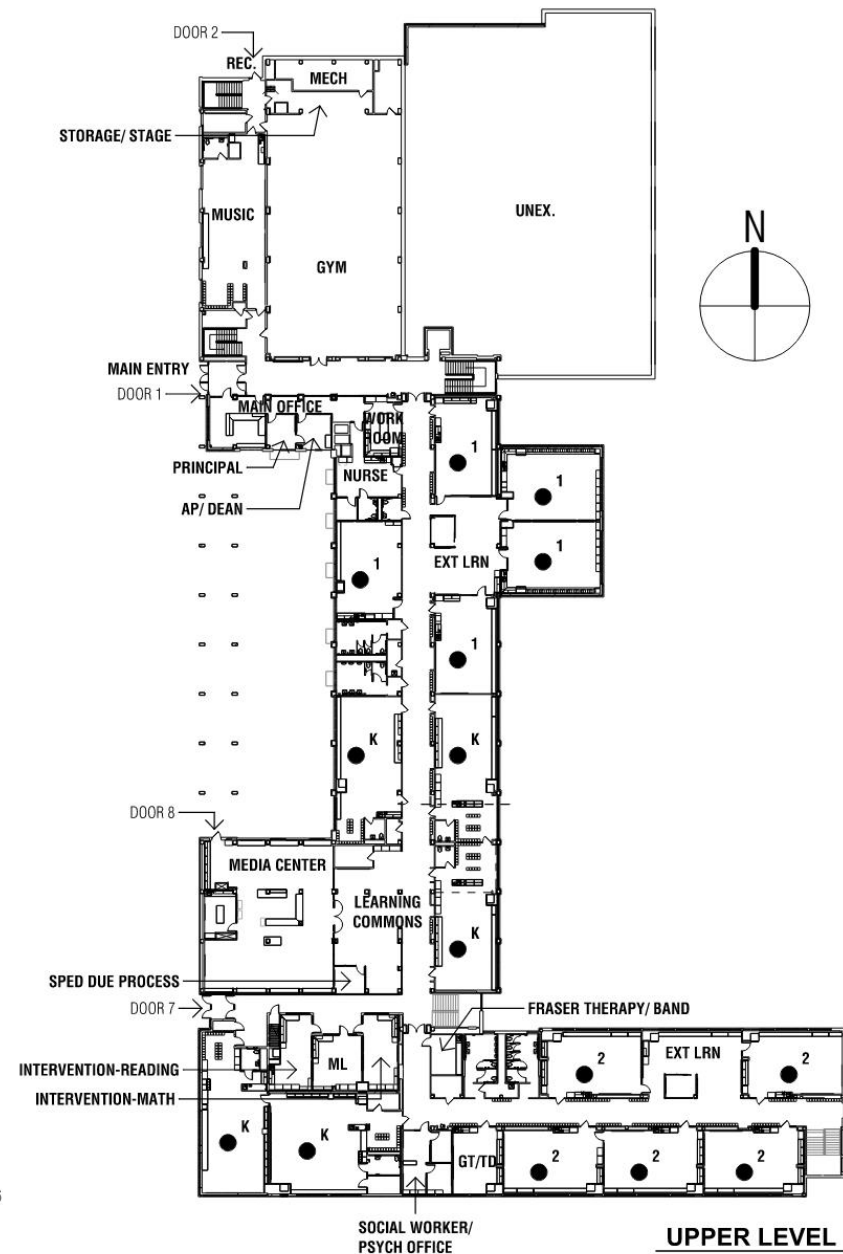
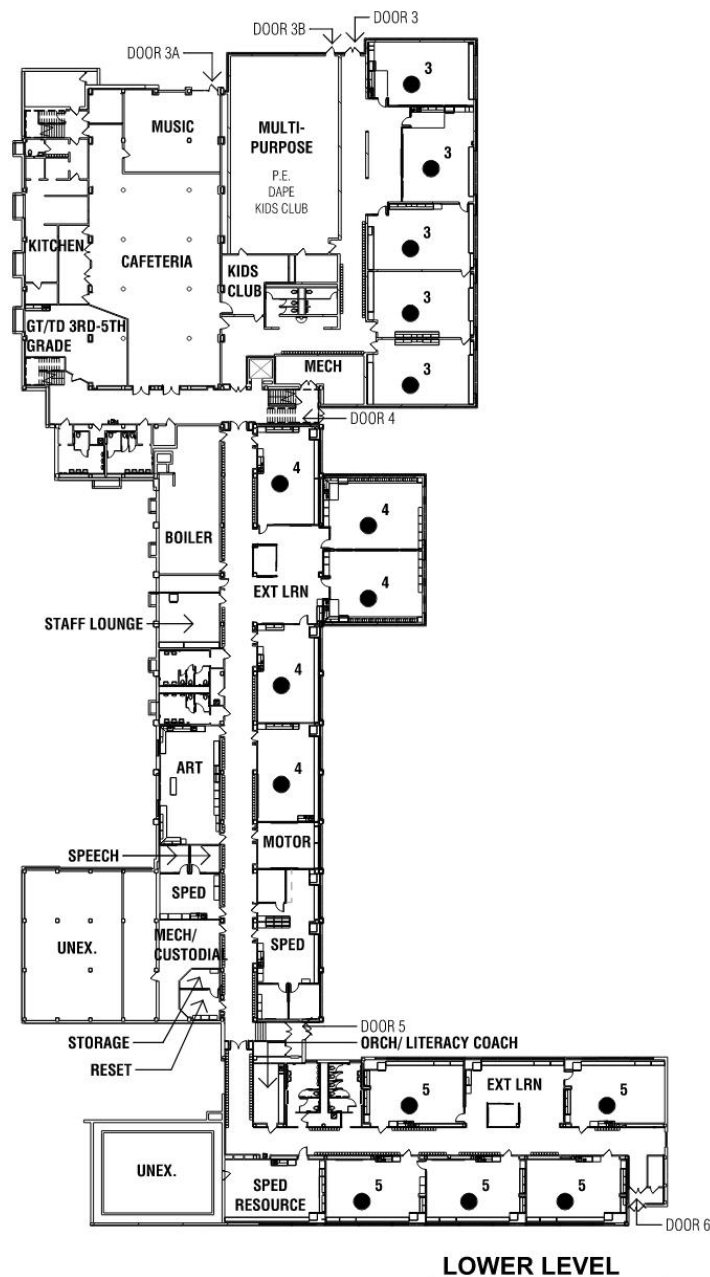
665

Potential Capacity

***665**

2019 Capacity 765

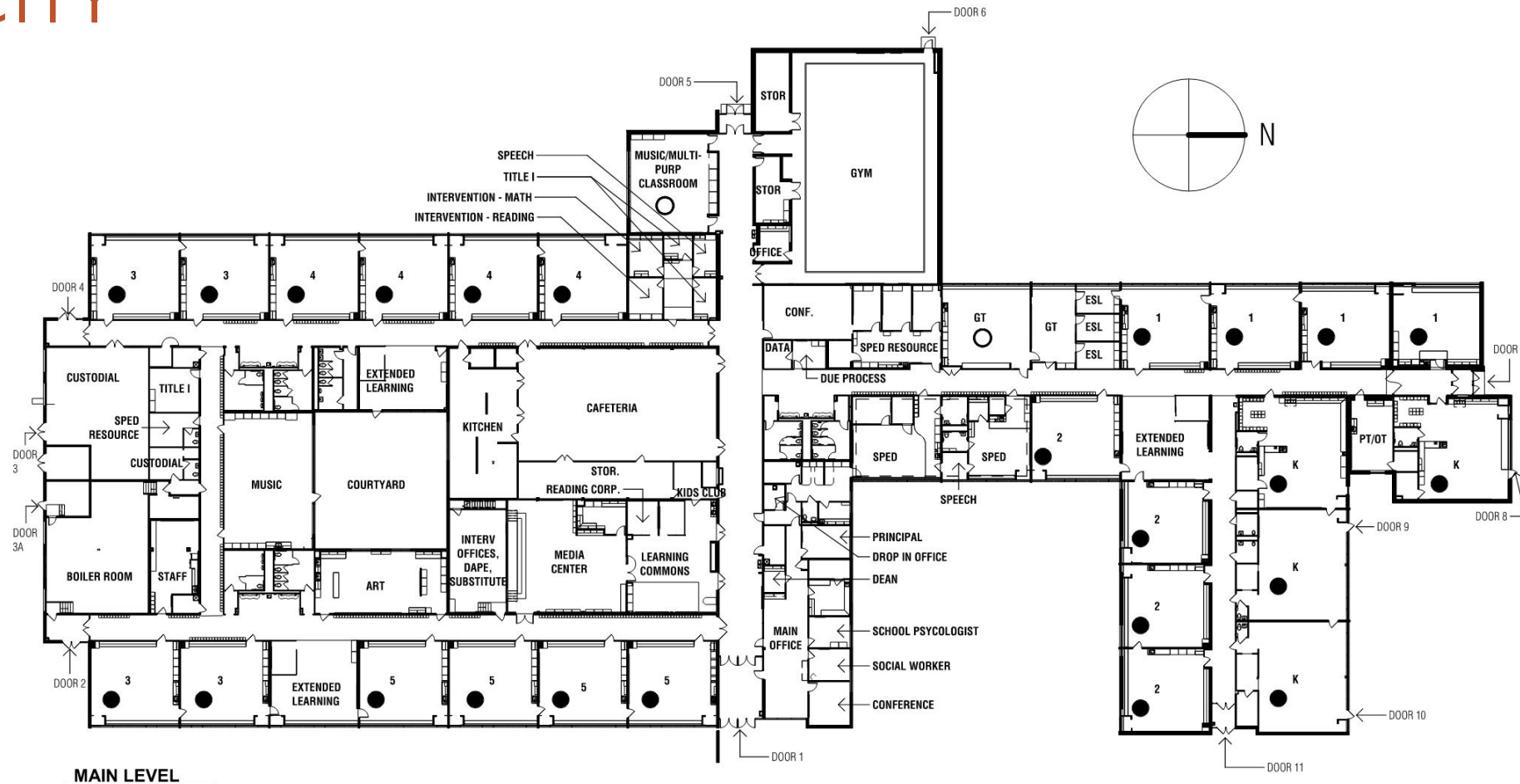
* Calculated at a higher student per classroom number



CORNELIA ELEMENTARY SCHOOL CAPACITY

Kindergarten	(4) x 20 =	80
1 st Grade	(4) x 21 =	84
2 nd Grade	(4) x 21 =	84
3 rd Grade	(4) x 23 =	92
4 th Grade	(4) x 24 =	96
5 th Grade	(4) x 24 =	96

Building Capacity **532***
Potential Capacity **582*



2019 Capacity 612

* Calculated at a higher student
per classroom number

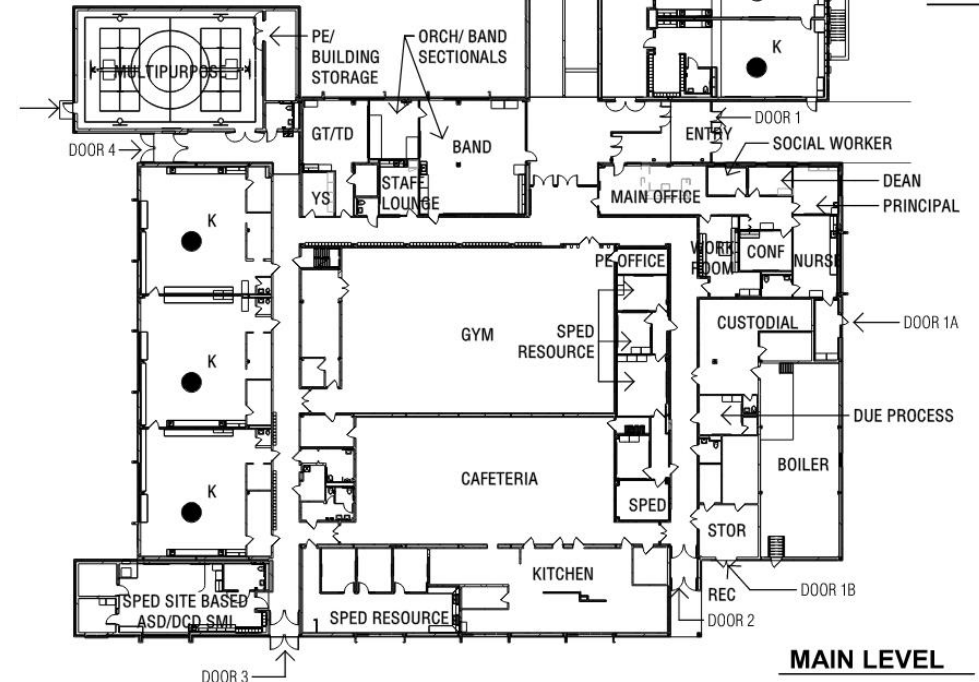
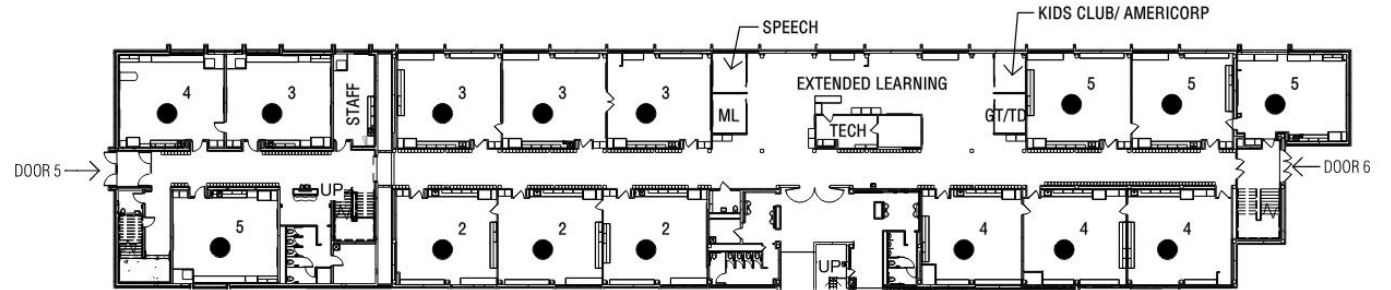
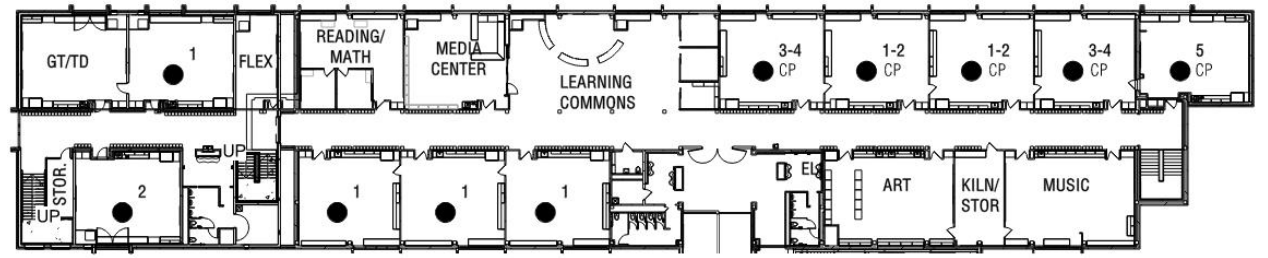
COUNTRYSIDE ELEMENTARY SCHOOL CAPACITY

Kindergarten	(5) x 20 =	100
1 st Grade	(4) x 21 =	84
2 nd Grade	(4) x 21 =	84
3 rd Grade	(4) x 23 =	92
4 th Grade	(4) x 24 =	96
5 th Grade	(4) x 24 =	96
CP	(5) x 28 =	140

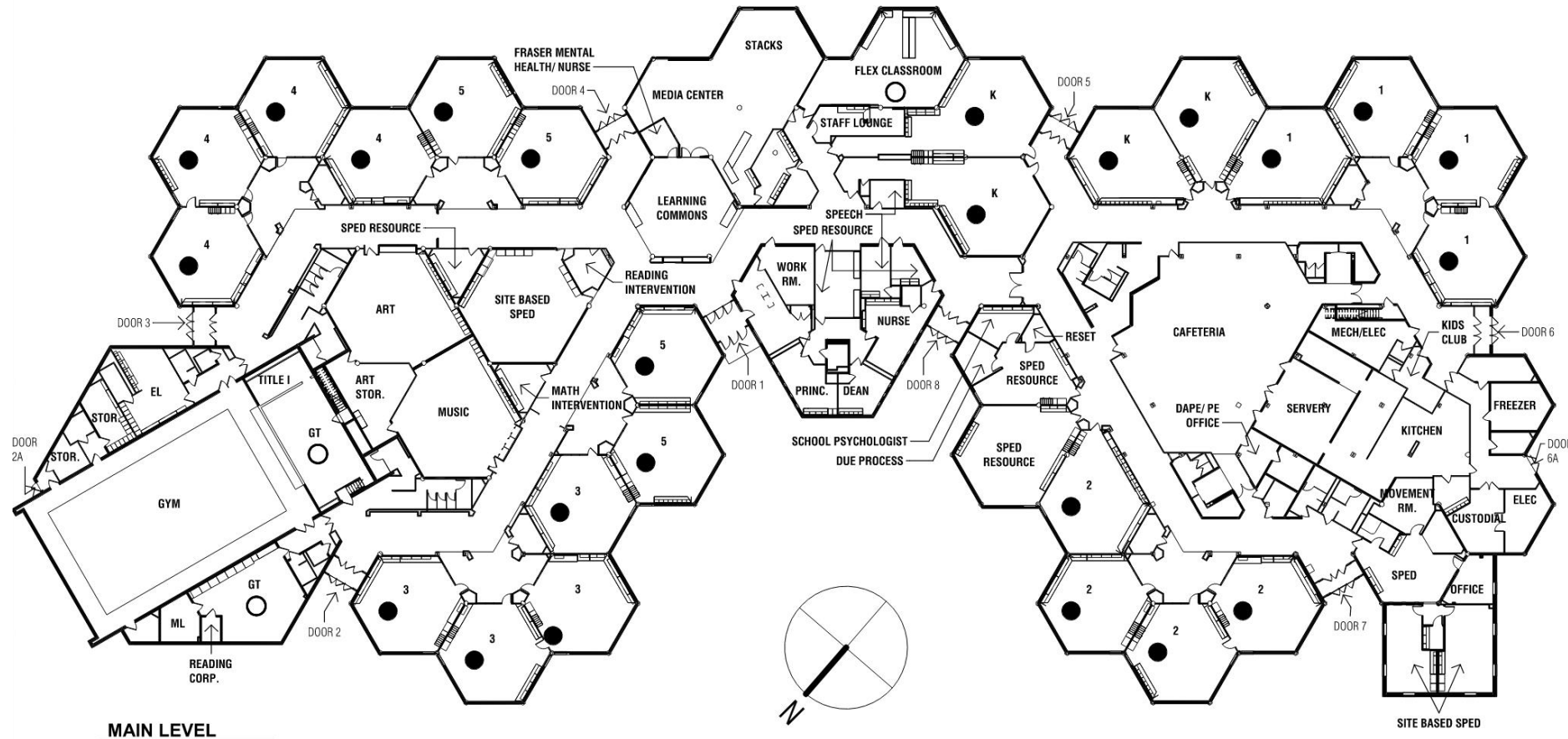
Building Capacity **692**
Potential Capacity **692*

2019 Capacity 594

* Calculated at a higher student
per classroom number



Kindergarten	$(4) \times 20 =$	80
1 st Grade	$(4) \times 21 =$	84
2 nd Grade	$(4) \times 21 =$	84
3 rd Grade	$(4) \times 23 =$	92
4 th Grade	$(4) \times 24 =$	96
5 th Grade	$(4) \times 24 =$	96
Building Capacity		532*
<i>Potential Capacity</i>		<i>*607</i>

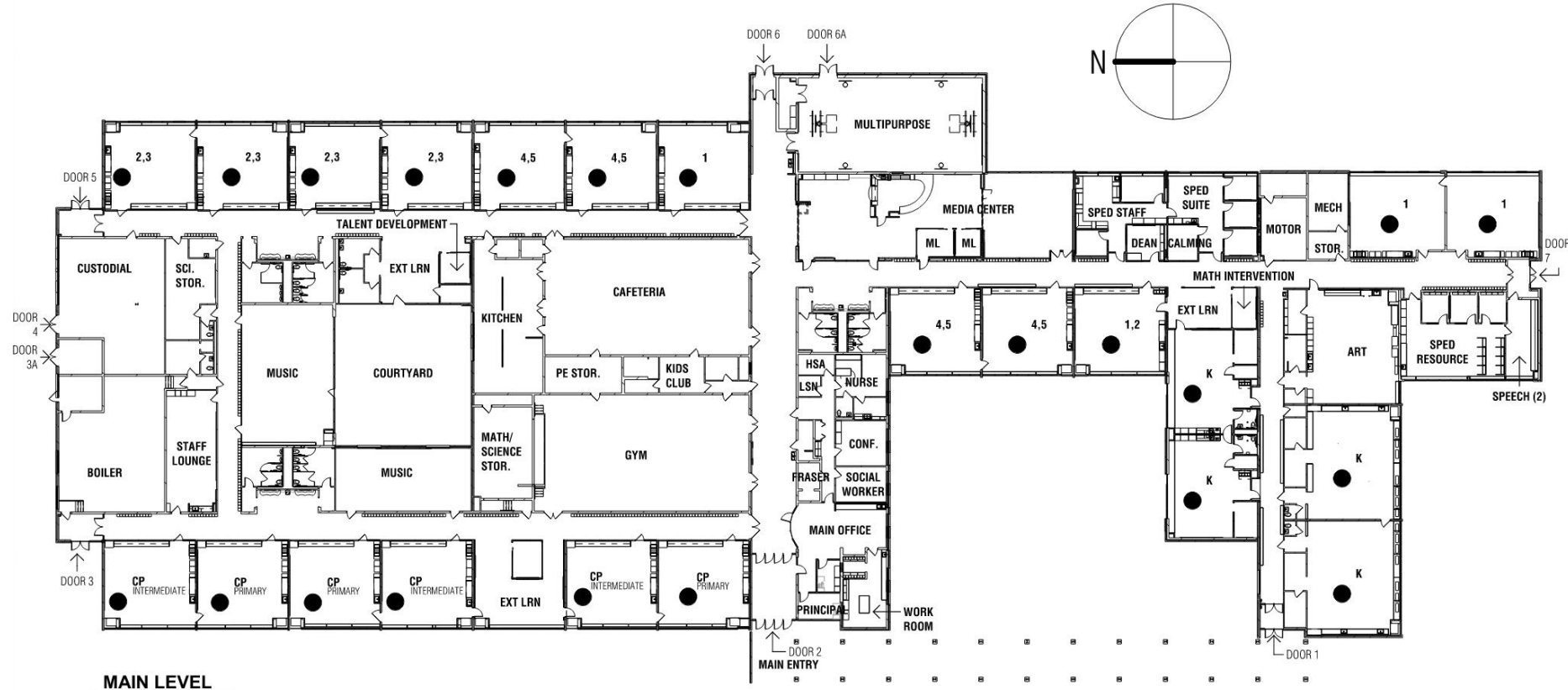


2019 Capacity 612

* Calculated at a higher student per classroom number

HIGHLANDS ELEMENTARY SCHOOL CAPACITY

Kindergarten	(4) × 20 =	80
1 st Grade	(3) × 21 =	63
1 st - 2 nd Grade	(1) × 21 =	21
2 nd - 3 rd Grade	(4) × 23 =	92
4 th - 5 th Grade	(4) × 24 =	96
CP	(6) × 28 =	168
Building Capacity		520
<i>Potential Capacity</i>		<i>*520</i>

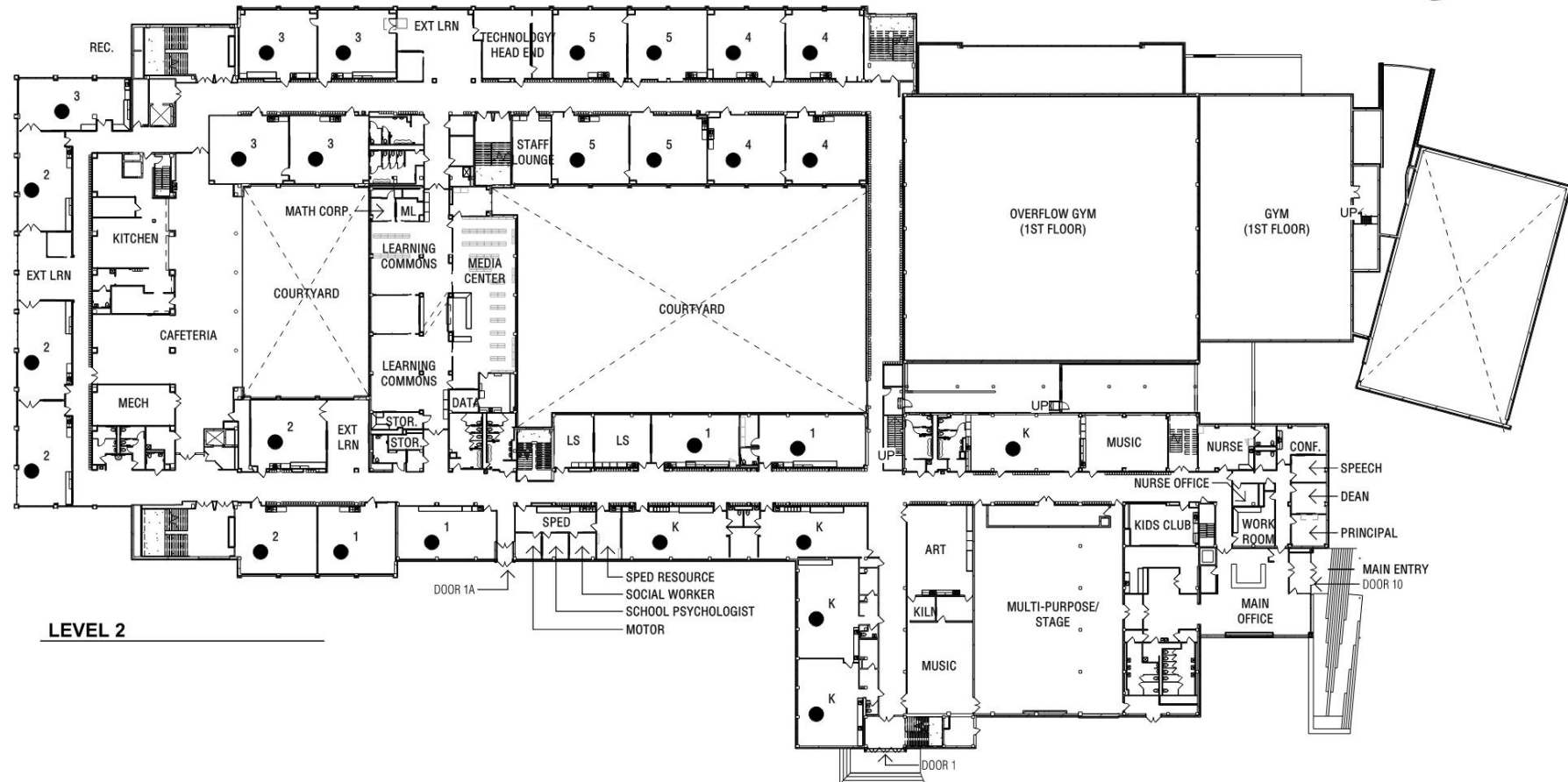
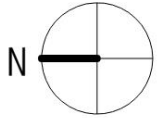
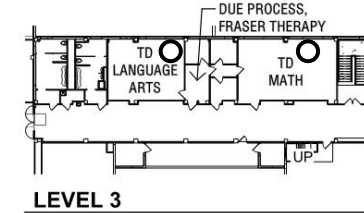


2019 Capacity 606

* Calculated at a higher student
per classroom number

NORMANDALE ELEMENTARY SCHOOL CAPACITY

Kindergarten	(5) x 20 =	100
1 st Grade	(4) x 21 =	84
2 nd Grade	(5) x 21 =	105
3 rd Grade	(5) x 23 =	115
4 th Grade	(4) x 24 =	96
5 th Grade	(4) x 24 =	96
Building Capacity		596
<i>Potential Capacity</i>		<i>*644</i>



2019 Capacity 660

* Calculated at a higher student per classroom number

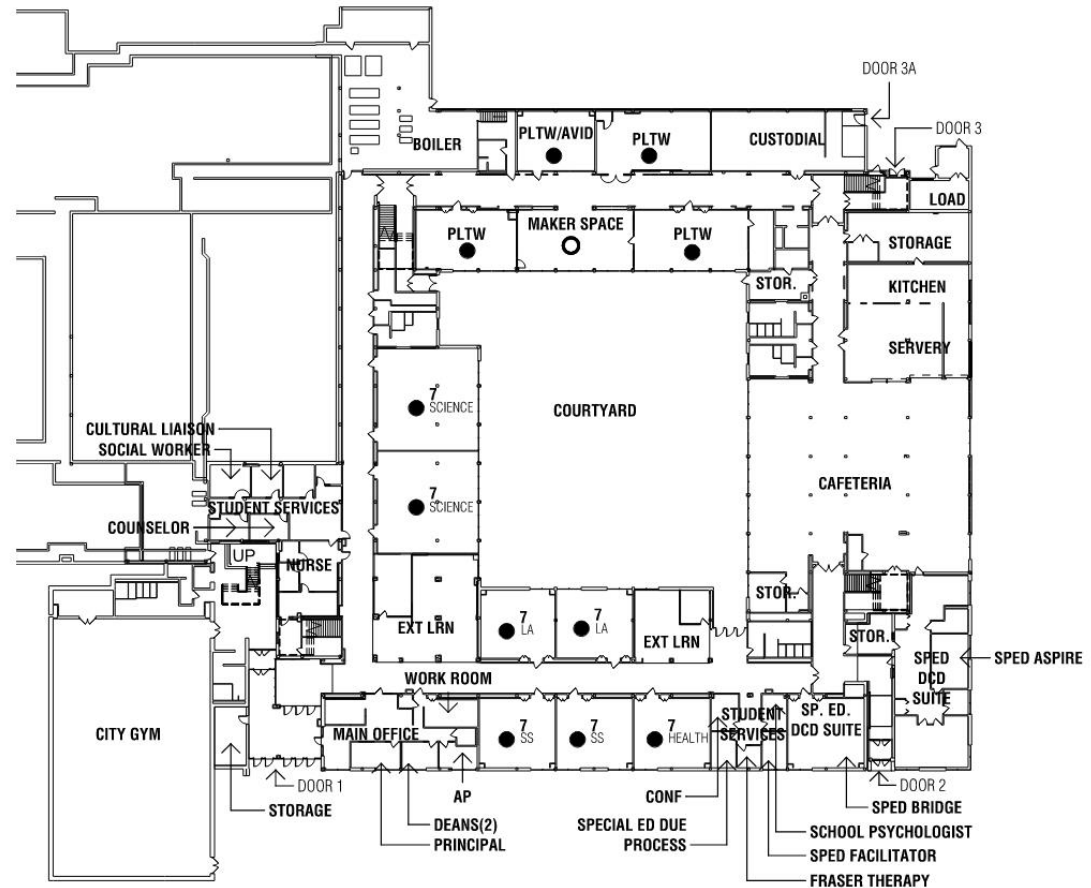
SOUTH VIEW MIDDLE SCHOOL CAPACITY

Current Schedule / Utilization

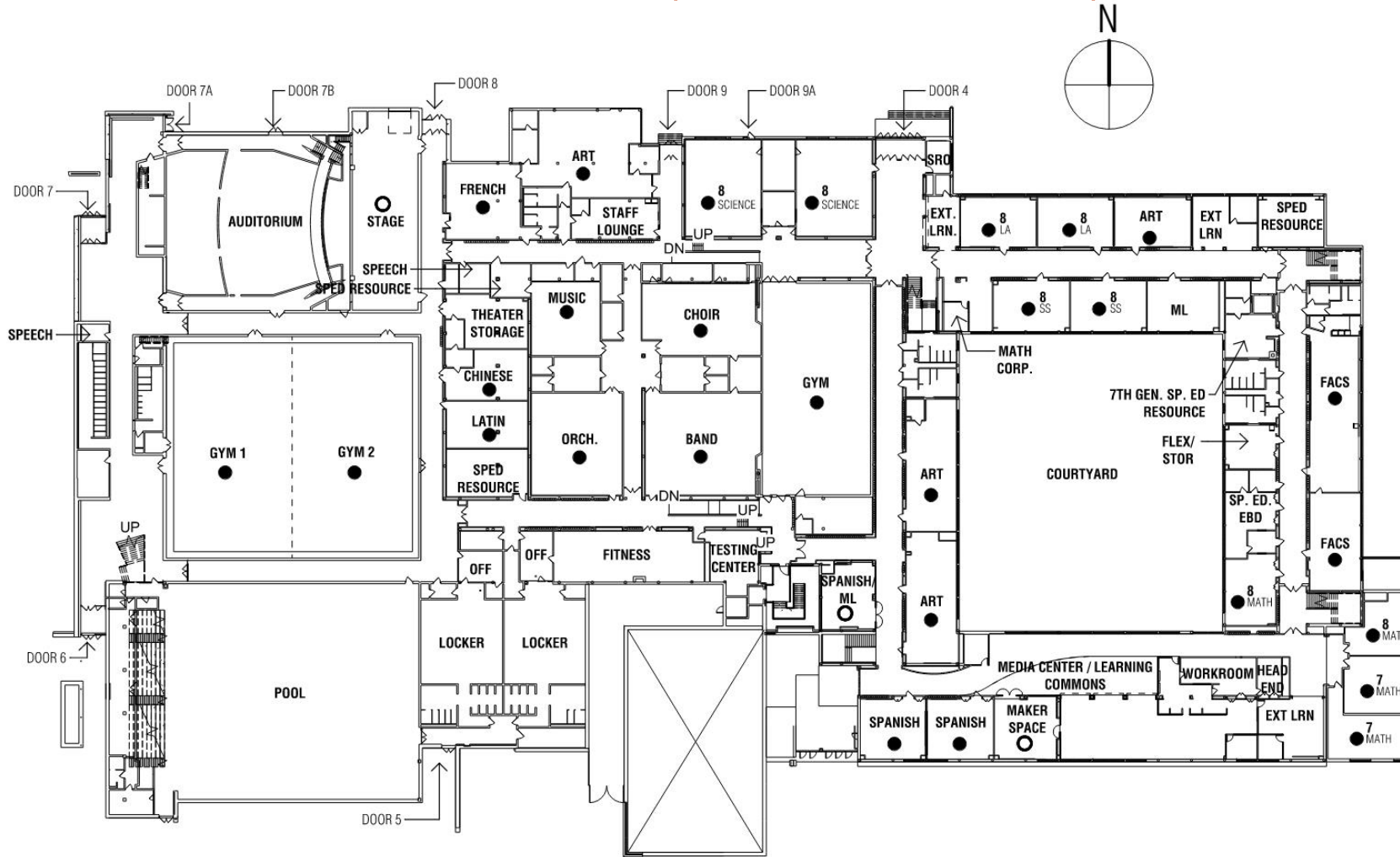
Teaching Stations	49
Potential Teaching Stations	4
Total Teaching Stations	53
x Students / Station	28.15
x % Utilization	75%
Building Capacity =	1,119

Alternate Utilization

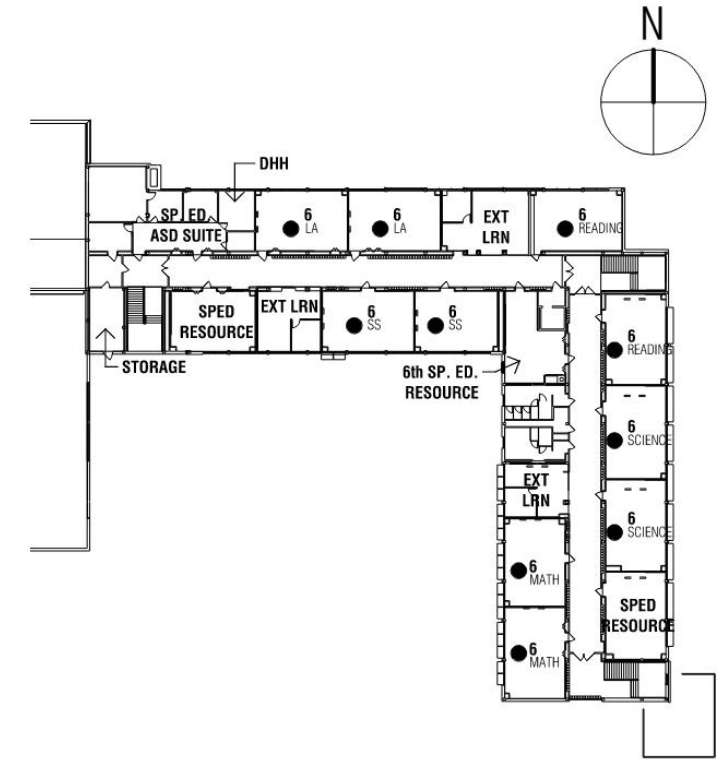
Teaching Stations	49
Potential Teaching Stations	4
Total Teaching Stations	53
x Students / Station	28.15
x % Utilization	85%
Building Capacity =	1,268



SOUTH VIEW MIDDLE SCHOOL CAPACITY (CONTINUED)



MAIN LEVEL



UPPER LEVEL

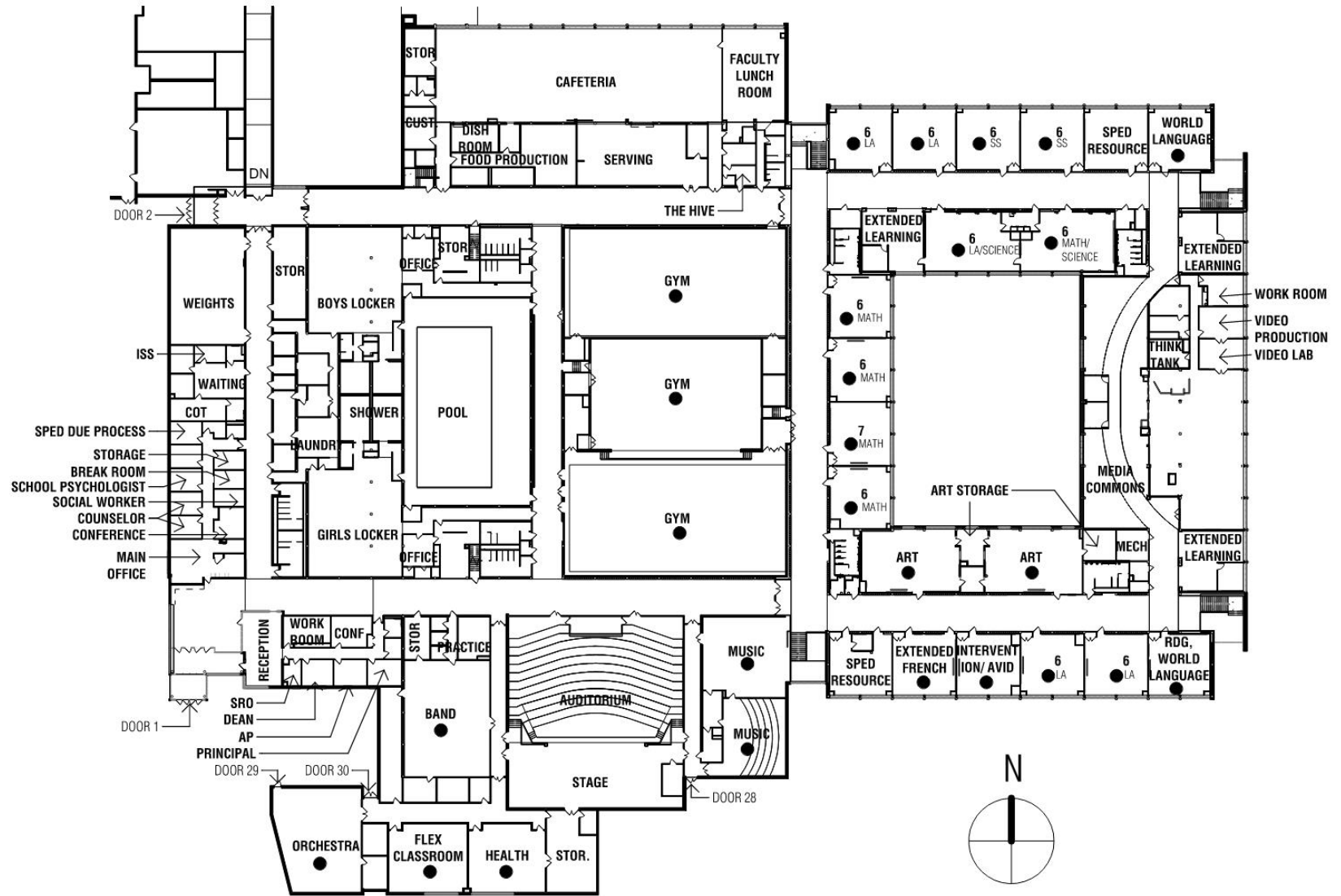
VALLEY VIEW MIDDLE SCHOOL CAPACITY

Current Schedule / Utilization

Teaching Stations	53
Potential Teaching Stations	2
Total Teaching Stations	55
x Students / Station	28.15
x % Utilization	75%
Building Capacity =	1,161

Alternate Utilization

Teaching Stations	53
Potential Teaching Stations	2
Total Teaching Stations	55
x Students / Station	28.15
x % Utilization	85%
Building Capacity =	1,316



UPPER LEVEL

LOWER LEVEL

DOOR 19 DOOR 20 DOOR 21 PLTW OFFICE DOOR 22 DOOR 23 DOOR 24 DOOR 25 DOOR 26 DOOR 27

CUSTODIAL PROJECT DESIGN PLTW CLEAN DESIGN MAKER'S SPACE FACS KITCHEN FACS SEWING SPEECH BUILDING STORAGE HEAD ENGINEER MECH CALMING COACH'S OFFICE FRASER THERAPY

7 MATH 7 MATH 7 MATH 7 LA 7 LA 7 SS 7 MATH 7 SS 7 SCIENCE 7 SCIENCE 7 SCIENCE ML 7,8 LA 8 SCIENCE 8 SCIENCE 8 LA 8 LA 8 SS 8 LA 8 LA 8 SS 7,8 LA

EXTENDED LEARNING EXTENDED LEARNING EXTENDED LEARNING EXTENDED LEARNING EXTENDED LEARNING EXTENDED LEARNING EXTENDED LEARNING EXTENDED LEARNING EXTENDED LEARNING EXTENDED LEARNING EXTENDED LEARNING

INTERVENTION SPANISH SPANISH FRENCH

SPEED DCD MOTOR SPEED ASD

SPEED RESOURCE

N

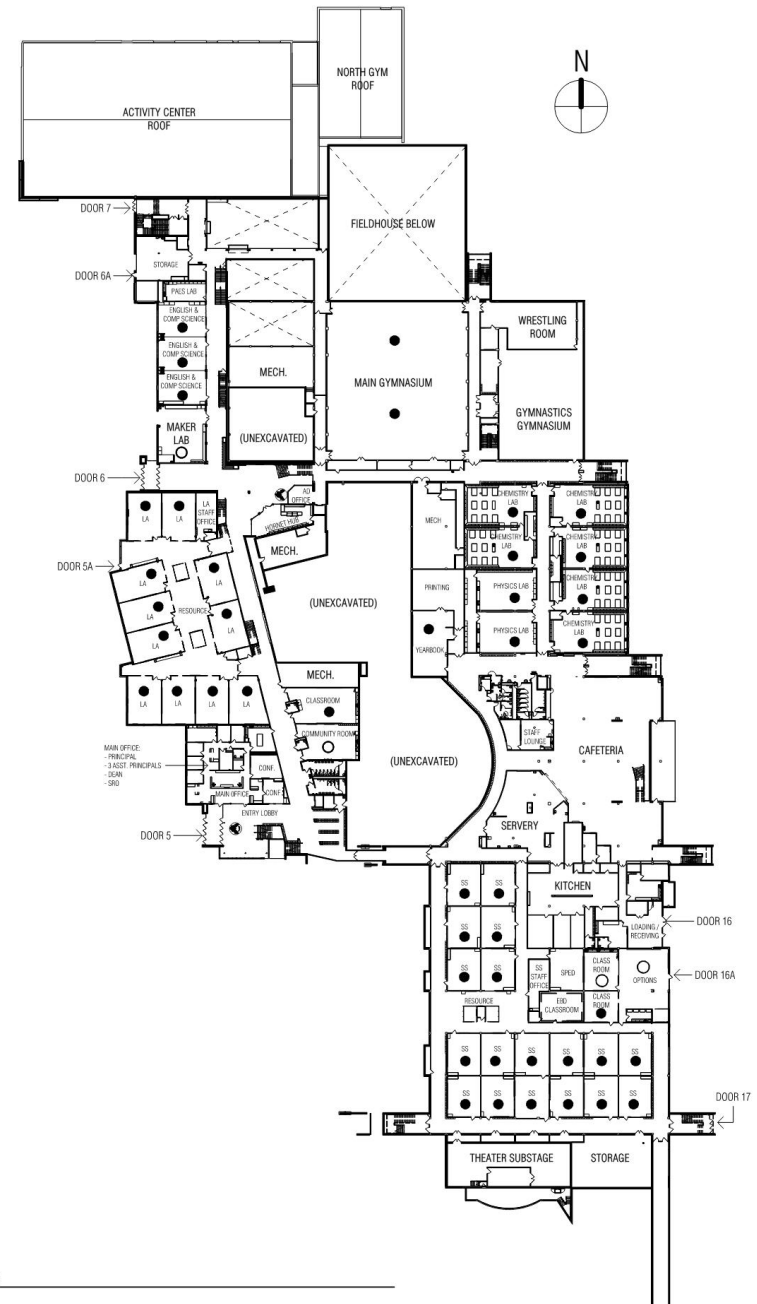
EDINA HIGH SCHOOL CAPACITY

Current Schedule / Utilization

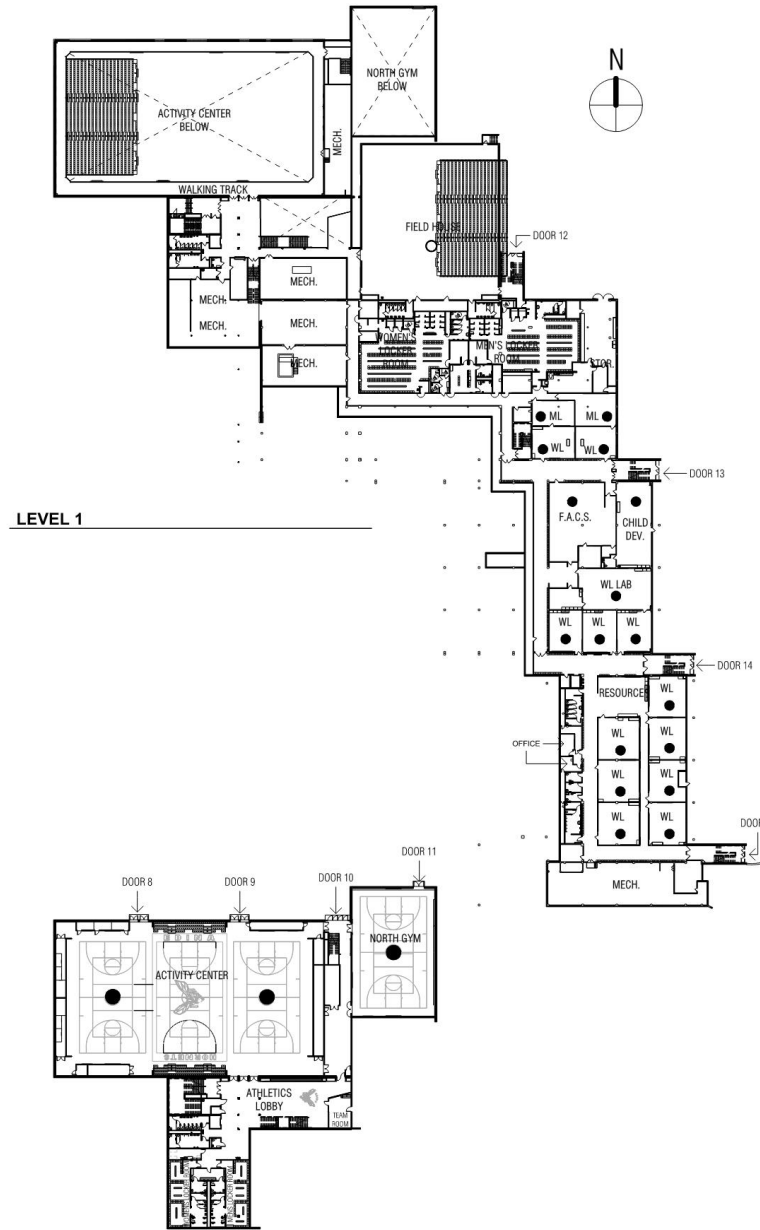
Teaching Stations	108
Potential Teaching Stations	8
Total Teaching Stations	116
x Students / Station	30.9
x % Utilization	85%
Building Capacity =	3,047

Alternate Utilization

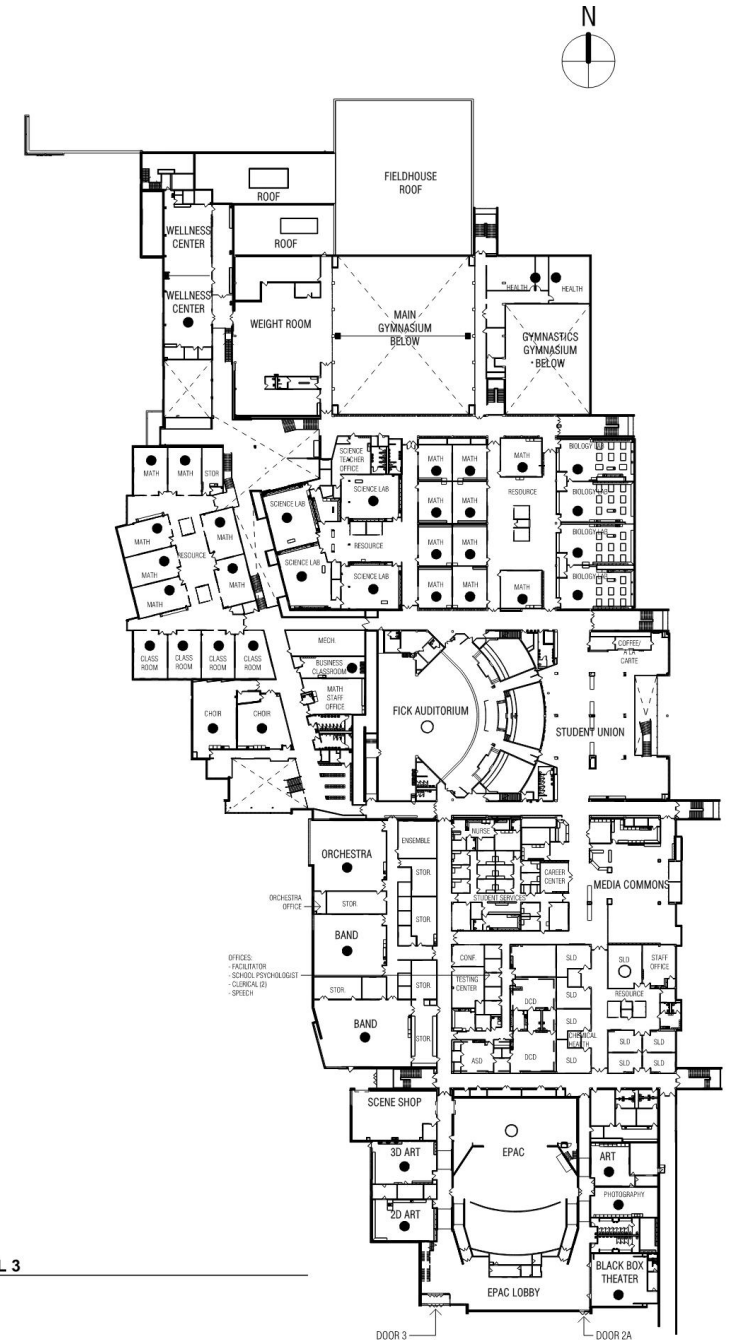
Teaching Stations	108
Potential Teaching Stations	8
Total Teaching Stations	116
x Students / Station	30.9
x % Utilization	90%
Building Capacity =	3,226



EDINA HIGH SCHOOL CAPACITY (CONTINUED)



ATHLETICS LEVEL



CAPACITY ANALYSIS

TOP SPACE NEEDS – ELEMENTARY LEVEL

- **Concord:**

- No conference space
- Music is a pinch point – not enough space for practice or instruments
- No ramp on east side of building near SpEd spaces
- No loading dock / downstairs kitchen creates challenges

- **Cornelia:**

- Space pressures mean GT and/or ESL might need to operate out of flex space
- Added SpEd resource space is far from others
- Music uses conference for lessons
- DCD space too small for group size
- Main office – poorly laid out work room, using vault as office

- **Countryside:**

- Breakout / conference rooms around learning commons used as offices due to need
- Building organization / labels still being determined as addition is underway (note: addition is shown on these graphics and assumed in the above math)

- **Creek Valley:**

- Staff lounge used for student programming at times
- No building conference room or 2nd music space/flex due to SpEd space growth
- Storage is a challenge
- Acoustics challenge in one of the SpEd spaces

CAPACITY ANALYSIS

TOP SPACE NEEDS – ELEMENTARY LEVEL

- **Highlands**

- Multipurpose too small for older grades
- SpEd space pressures – 8 case managers, not all spaces appropriate
- Parking is a big challenge

- **Normandale**

- Staff count makes lounge space tough (use 3rd floor too)
- SpEd space size difficult for group sizes needing to be served
- Bathrooms difficult for gym (outside lockdown line)
- Expansion into 3rd floor relieved some space pressure (and Countryside work)

- **South View Middle School**

- Ticket office used as office
- 5 music teachers sharing 4 spaces – utilize theater stage
- 18 students per advisory – have to use spaces not designed to accommodate
- New art programming (visual media arts) doesn't have dedicated art room to be scheduled into

- **Valley View Middle School**

- 18 students per advisory – have to use spaces not designed to accommodate
- New art programming (visual media arts) doesn't have dedicated art room to be scheduled into
- Fabric design room layout difficult to fit 28 students
- Underutilized Hive space next to cafeteria
- Narrow hallway between SpEd rooms – want to change
- Raised center gym / operable walls can be challenging

- **Edina High School**
 - Need additional science space – potentially underutilized yearbook room to be converted
 - FACS space does not meet current demand – may expand into VWL Lab in future
 - Options to increase teaching use of Fick still interesting
 - Office space is at a premium (+5 counselors / social workers)

Elementary School Summary

- Limited Conference Room Space
- Inconsistent staff spaces throughout all elementary schools
- No Orchestra and Band rehearsal space
- Not enough, or inadequately sized SPED spaces

Middle Schools and High School Summary

- Limited office and conference space
- New art programming does not have a dedicated space

NEXT STEPS