



Collin College

2017 Capital Improvement Program
Monthly Report
April 2018

Collin County Community College District

Project Reference: 60541060
Project Number: 60541060

May 7, 2018

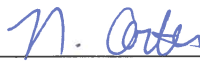
Quality information

Prepared by



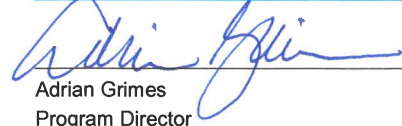
Nick Fiehler
Program Controls Manager

Checked by



Nuria Cortes
Documents Control Manager

Approved By



Adrian Grimes
Program Director

Revision History

Revision	Revision date	Details	Authorized	Name	Position
First Publication	05/07/2018	April '18 Report	Yes	Adrian Grimes	Program Director

Distribution List

# Hard Copies	PDF Required	Association / Company Name
	1	Ken Lynn / Collin College
	1	Bill King / Collin College

Prepared for:

Collin County Community College District
3452 Spur 399
Suite 327
McKinney, TX 75069

Prepared by:

Nick Fiehler
Program Controls Manager
E: nfiehler.aecom@collin.edu

AECOM
13355 Noel Road
4th Floor
Dallas TX, 75240
aecom.com

Copyright © 2018 by AECOM

All rights reserved. No part of this copyrighted work may be reproduced, distributed, or transmitted in any form or by any means without the prior written permission of AECOM.

Table of Contents

1.	Introduction	5
2.	Executive Summary	5
3.	Scope.....	6
3.1	Phase 1	6
3.2	Phase 2	6
3.3	Phase 3	6
3.4	Phase 4	7
4.	Community.....	7
4.1	Project Teams	7
4.1.1	Phase 1	7
4.1.2	Phase 2	8
4.1.3	Phase 3	8
4.1.4	Phase 4	8
4.2	Current Personnel Estimate.....	9
4.3	Community Outreach.....	9
5.	Schedule.....	10
5.1	Program.....	10
5.2	Phase 1	11
5.3	Phase 2	12
5.4	Phase 3	12
5.5	Phase 4	13
6.	Budget	14
6.1	Program Summary.....	14
6.2	Phase 1	14
6.3	Phase 2	15
6.4	Phase 3	16
6.5	Phase 4	16
6.6	Building Fund Reimbursement	18
7.	Completed Items.....	18
7.1	General Program	18
7.2	Procurement.....	18
7.3	Design	18
7.4	Pre-Construction.....	19
7.5	Construction	19
7.6	Acceptance and Close-Out.....	19
8.	Pending Items.....	19
8.1	General Program	19
8.2	Procurement.....	19
8.3	Design	20
8.4	Pre-Construction.....	20
8.5	Construction	20
8.6	Acceptance and Close-Out.....	20
	Appendix A – Schedule Milestone Definitions	21

1. Introduction

On May 6, 2017, voters approved Collin College's \$600 million bond proposal to facilitate a long-range plan to accommodate the projected population growth in Collin County over the next two decades. The program consists of 4 new campuses, 3 new facilities, 2 repurposed existing spaces, and 3 wayfinding projects (on existing sites). The program is scheduled to be completed in 4 phases over 7 years with projects opening in early 2020.

On May 16, 2017, in a special session, the Board of Trustees granted the District President authority to enter and negotiate into contract with AECOM Technical Services, Inc. (AECOM) to provide Program Management Services to the Collin College 2017 Capital Improvement Program. On May 25, 2017, Collin College issued a Notice to Proceed to AECOM. As part of these services, AECOM will deliver a monthly report to provide status and progress of key aspects of the Program.

2. Executive Summary

The Program is progressing as planned with no major issues to report at this time.

Completed and Pending Items

- Perkins+Will, Inc. submitted the Design Development documents for the Technical Campus
- City of Allen's city council approved the Concept Plan for the Technical Campus
- Architectural and Engineering Services RFQ was issued for Phase 2 projects
- Page Southerland Page, Inc. continue to work towards the submittal of Design Development documents
- Project teams continue to work on value engineering and cost reductions to bring projects within approved budget limits

Items of close attention

- Potential roadway intersection improvements currently required by the City of Wylie for the Wylie Campus
- Approval by the City of Wylie of a traffic signal on the south side of the site for the Wylie Campus
- Approval by the United States Army Corp of Engineers of wetlands mitigation for the Wylie Campus
- Coordination with the City of Allen to work around an approval timeframe that is not currently compatible with the scheduled commencement of construction for the Technical Campus
- The Wylie Campus design and construction schedules are being monitored closely to ensure construction can complete in Fall 2020, while maintaining budget and quality of construction

Budget Summary

- \$29,120,168 of the \$600,000,000 has been committed to-date in the form of contracts with various vendors. This represents 4.85% of the overall program budget committed.
- \$9,484,664 of the \$29,120,168 committed amount has been expended to-date. This represents 32.57% of the commitments expended and 1.58% of the program budget expended.

3. Scope

3.1 Phase 1

- Wylie Campus
 - Construction of a campus on a new approximately 97-acre site
 - The campus is planned to include:
 - Campus Commons
 - Learning Resource Center / Library
 - Student Center
- Technical Campus
 - Construction of a Technical Campus on a new 32-acre site in Allen, Texas
 - Programs planned for inclusion include:
 - Advanced Manufacturing, Aviation Technology, Construction, Health Science, Logistics and Transportation

3.2 Phase 2

- Celina Campus
 - Construction of a campus on a new approximately 75-acre site
 - The campus is planned to include:
 - Student Union / Workforce / Instructional Building
- Farmersville Campus
 - Construction of a campus on a new approximately 76-acre site
 - The campus is planned to include:
 - Student Union / Workforce / Instructional Building
- Preston Ridge Campus
 - Construction of a new facility on an existing campus
 - The campus is planned to include:
 - IT Center of Excellence

3.3 Phase 3

- Preston Ridge Campus
 - Construction of a new facility on an existing campus
 - The campus is planned to include:
 - Welcome Center
- Central Park Campus
 - Construction of a new facility on an existing campus
 - The campus is planned to include:
 - Welcome Center

3.4 Phase 4

- Preston Ridge Campus
 - Renovations / Repurposing of Existing Buildings
- Central Park Campus
 - Renovations / Repurposing of Existing Buildings
- Central Park Campus
 - Traffic Infrastructure & Wayfinding
- Preston Ridge Campus
 - Wayfinding
- Spring Creek Campus
 - Wayfinding

4. Community

4.1 Project Teams

4.1.1 Phase 1

- Wylie Campus
 - Program Manager: AECOM Technical Services, Inc. (under contract)
 - A/E: Page Southerland Page, Inc. (under contract)
 - MEP: Reed, Wells, Benson & Co.
 - Civil Engineer: Pacheco Koch Consulting Engineers, Inc.
 - Cost Consulting: Vermeulens
 - Construction Manager-at-Risk: Skanska USA Building, Inc. (under contract)
 - Commissioning Agent: Bath Group, Inc. (under contract)
- Technical Campus
 - Program Manager: AECOM Technical Services, Inc. (under contract)
 - A/E: Perkins+Will, Inc. (under contract)
 - Associate Architect: Hoefer Wysocki Architecture
 - MEP: Purdy McGuire
 - Civil Engineer: Pacheco Koch Consulting Engineers, Inc.
 - Structural Engineer: L.A. Fuess Partners, Inc.
 - Cost Consulting: Vermeulens
 - Construction Manager-at-Risk: McCarthy Building Companies, Inc. (under contract)
 - Commissioning Agent: Farnsworth (under contract)

4.1.2 Phase 2

- Celina Campus
 - Program Manager: AECOM (under contract)
 - A/E: TBD
 - Construction Manager-at-Risk: TBD
- Farmersville Campus
 - Program Manager: AECOM (under contract)
 - A/E: TBD
 - Construction Manager-at-Risk: TBD
- Preston Ridge Campus (IT Center of Excellence)
 - Program Manager: AECOM (under contract)
 - A/E: TBD
 - Construction Manager-at-Risk: TBD

4.1.3 Phase 3

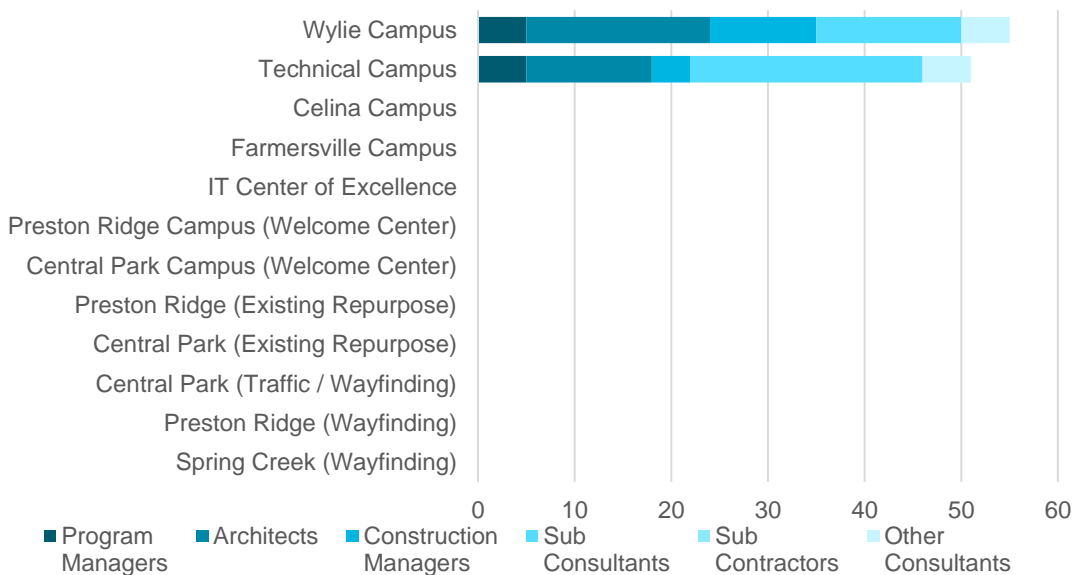
- Preston Ridge Campus (Welcome Center)
 - Program Manager: (AECOM option expiration date: August 2019)
 - A/E: TBD
 - Construction Manager-at-Risk: TBD
- Central Park Campus (Welcome Center)
 - Program Manager: (AECOM option expiration date: August 2019)
 - A/E: TBD
 - Construction Manager-at-Risk: TBD

4.1.4 Phase 4

- Preston Ridge (Existing Repurpose)
 - Program Manager: (AECOM option expiration date: May 2021)
 - A/E: TBD
 - Construction Manager-at-Risk: TBD
- Central Park (Existing Repurpose)
 - Program Manager: (AECOM option expiration date: May 2021)
 - A/E: TBD
 - Construction Manager-at-Risk: TBD
- Central Park (Traffic / Wayfinding)
 - Program Manager: (AECOM option expiration date: May 2021)
 - A/E: TBD

- Construction Manager-at-Risk: TBD
- Preston Ridge (Wayfinding)
 - Program Manager: (AECOM option expiration date: May 2021)
 - A/E: TBD
 - Construction Manager-at-Risk: TBD
- Spring Creek (Wayfinding)
 - Program Manager: (AECOM option expiration date: May 2021)
 - A/E: TBD
 - Construction Manager-at-Risk: TBD

4.2 Current Personnel Estimate



It is estimated that the Program Managers, Architects, Construction Managers, Sub-Consultants, and Sub-Contractors, under contract with Collin College for the 2017 Capital Improvement Program, have 106 employees contributing to the program's progress.

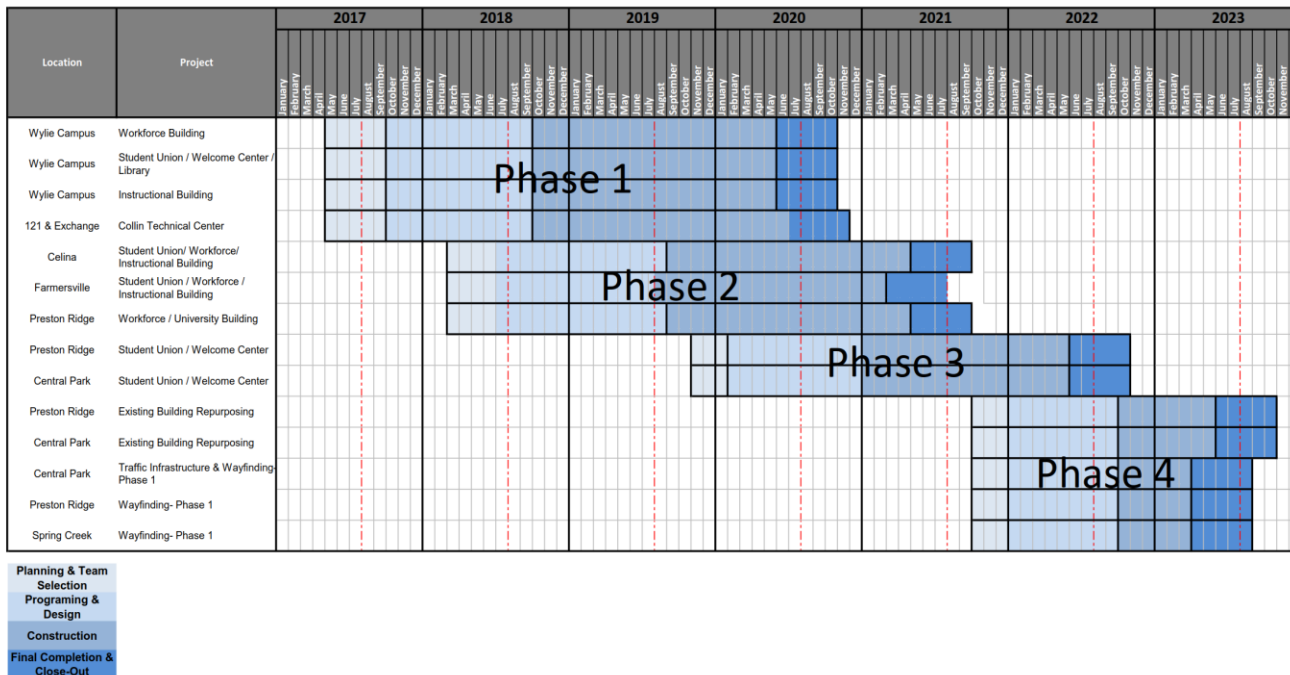
4.3 Community Outreach

- Collin College 2017 Capital Improvement Program Website
 - o <https://CollinCollege2017CIP.com>
 - o Includes the following features:
 - Program Overview
 - Project Scopes
 - Project Schedules
 - Project Budgets
 - Progress Photos/Renderings
 - Live On-Site Camera Feeds

5. Schedule

Appendix A – Schedule Milestone Definitions includes listing of milestones and definitions

5.1 Program



5.2 Phase 1

Wylie Campus

Activity	Baseline Finish	Planned Finish		Actual Finish	
BOT Approval of Program Manager	May 16, 2017	May 16, 2017	↑	May 16, 2017	✓
BOT Approval of A/E Procurement Method	May 23, 2017	May 23, 2017	↑	May 23, 2017	✓
BOT Approval of Construction Delivery Method	May 23, 2017	May 23, 2017	↑	May 23, 2017	✓
BOT Approval of Recommended Firms	August 22, 2017	August 22, 2017	↑	August 22, 2017	✓
Architect Mobilized	September 12, 2017	September 29, 2017	↓	September 28, 2017	✓
GMP Construction Documents Submittal	June 26, 2018	June 26, 2018	↑	-	
BOT Approval of GMP	August 28, 2018	August 28, 2018	↑	-	
Contractor Mobilized	September 10, 2018	September 10, 2018	↑	-	
Foundations Complete	TBD	TBD		-	
Building Top Out	TBD	TBD		-	
Building Dry-In	TBD	TBD		-	
Building Energized	TBD	TBD		-	
Building Climatized	TBD	TBD		-	
Temporary CO	TBD	TBD		-	
Final CO	TBD	TBD		-	
Substantial Completion	May 1, 2020	May 1, 2020	↑	-	
Final Completion	July 1, 2020	July 1, 2020	↑	-	
Student Occupancy	August 2020	August 2020	↑	-	

Technical Campus

Activity	Baseline Finish	Planned Finish		Actual Finish	
BOT Approval of Program Manager	May 16, 2017	May 16, 2017	↑	May 16, 2017	✓
BOT Approval of A/E Procurement Method	May 23, 2017	May 23, 2017	↑	May 23, 2017	✓
BOT Approval of Construction Delivery Method	May 23, 2017	May 23, 2017	↑	May 23, 2017	✓
BOT Approval of Recommended Firms	August 22, 2017	August 22, 2017	↑	August 22, 2017	✓
Architect Mobilized	September 12, 2017	September 29, 2017	↓	September 28, 2017	✓
GMP Construction Documents Submittal	April 16, 2018	April 16, 2018	↑	April 19, 2018	✓
BOT Approval of GMP	June 26, 2018	June 26, 2018	↑	-	
Contractor Mobilized	July 6, 2018	July 6, 2018	↑	-	
Foundations Complete	TBD	TBD		-	
Building Top Out	TBD	TBD		-	
Building Dry-In	TBD	TBD		-	
Building Energized	TBD	TBD		-	
Building Climatized	TBD	TBD		-	
Temporary CO	TBD	TBD		-	
Final CO	TBD	TBD		-	
Substantial Completion	May 1, 2020	May 1, 2020	↑	-	
Final Completion	July 1, 2020	July 1, 2020	↑	-	
Student Occupancy	August 2020	August 2020	↑	-	

5.3 Phase 2

Celina Campus

Activity	Baseline Finish	Planned Finish		Actual Finish	
BOT Approval of Program Manager	September 25, 2018	February 14, 2018	↑	February 14, 2018	✓
BOT Approval of A/E Procurement Method	September 25, 2018	March 27, 2018	↑	March 27, 2018	✓
BOT Approval of Construction Delivery Method	September 25, 2018	March 27, 2018	↑	March 27, 2018	✓
BOT Approval of Recommended A/E Firm	June 26, 2018	June 26, 2018	↑	-	
BOT Approval of Recommended CM Firm	August 2018	August 2018	↑	-	
Architect Mobilized	July 24, 2018	July 24, 2018	↑	-	
Student Occupancy	August 2021	August 2021	↑	-	

Farmersville Campus

Activity	Baseline Finish	Planned Finish		Actual Finish	
BOT Approval of Program Manager	September 25, 2018	February 14, 2018	↑	February 14, 2018	✓
BOT Approval of A/E Procurement Method	September 25, 2018	March 27, 2018	↑	March 27, 2018	✓
BOT Approval of Construction Delivery Method	September 25, 2018	March 27, 2018	↑	March 27, 2018	✓
BOT Approval of Recommended A/E Firm	June 26, 2018	June 26, 2018	↑	-	
BOT Approval of Recommended CM Firm	August 2018	August 2018	↑	-	
Architect Mobilized	July 24, 2018	July 24, 2018	↑	-	
Student Occupancy	August 2021	August 2021	↑	-	

Preston Ridge Campus (IT Center of Excellence)

Activity	Baseline Finish	Planned Finish		Actual Finish	
BOT Approval of Program Manager	September 25, 2018	February 14, 2018	↑	February 14, 2018	✓
BOT Approval of A/E Procurement Method	September 25, 2018	March 27, 2018	↑	March 27, 2018	✓
BOT Approval of Construction Delivery Method	September 25, 2018	March 27, 2018	↑	March 27, 2018	✓
BOT Approval of Recommended A/E Firm	June 26, 2018	June 26, 2018	↑	-	
BOT Approval of Recommended CM Firm	August 2018	August 2018	↑	-	
Architect Mobilized	July 24, 2018	July 24, 2018	↑	-	
Student Occupancy	August 2021	August 2021	↑	-	

5.4 Phase 3

Preston Ridge Campus (Welcome Center)

Activity	Baseline Finish	Planned Finish		Actual Finish	
BOT Approval of Program Manager	November 2019	November 2019	↑	-	
BOT Approval of A/E Procurement Method	November 2019	November 2019	↑	-	
BOT Approval of Construction Delivery Method	November 2019	November 2019	↑	-	
Student Occupancy	August 2022	August 2022	↑	-	

Central Park Campus (Welcome Center)

Activity	Baseline Finish	Planned Finish		Actual Finish
BOT Approval of Program Manager	November 2019	November 2019	↑	-
BOT Approval of A/E Procurement Method	November 2019	November 2019	↑	-
BOT Approval of Construction Delivery Method	November 2019	November 2019	↑	-
Student Occupancy	August 2022	August 2022	↑	-

5.5 Phase 4**Preston Ridge (Existing Repurpose)**

Activity	Baseline Finish	Planned Finish		Actual Finish
BOT Approval of Program Manager	October 2021	October 2021	↑	-
BOT Approval of A/E Procurement Method	October 2021	October 2021	↑	-
BOT Approval of Construction Delivery Method	October 2021	October 2021	↑	-
Student Occupancy	August 2023	August 2023	↑	-

Central Park (Existing Repurpose)

Activity	Baseline Finish	Planned Finish		Actual Finish
BOT Approval of Program Manager	October 2021	October 2021	↑	-
BOT Approval of A/E Procurement Method	October 2021	October 2021	↑	-
BOT Approval of Construction Delivery Method	October 2021	October 2021	↑	-
Student Occupancy	August 2023	August 2023	↑	-

Central Park (Traffic / Wayfinding)

Activity	Baseline Finish	Planned Finish		Actual Finish
BOT Approval of Program Manager	October 2021	October 2021	↑	-
BOT Approval of A/E Procurement Method	October 2021	October 2021	↑	-
BOT Approval of Construction Delivery Method	October 2021	October 2021	↑	-
Student and Staff Use	August 2023	August 2023	↑	-

Preston Ridge (Wayfinding)

Activity	Baseline Finish	Planned Finish		Actual Finish
BOT Approval of Program Manager	October 2021	October 2021	↑	-
BOT Approval of A/E Procurement Method	October 2021	October 2021	↑	-
BOT Approval of Construction Delivery Method	October 2021	October 2021	↑	-
Student and Staff Use	August 2023	August 2023	↑	-

Spring Creek (Wayfinding)

Activity	Baseline Finish	Planned Finish		Actual Finish
BOT Approval of Program Manager	October 2021	October 2021	↑	-
BOT Approval of A/E Procurement Method	October 2021	October 2021	↑	-
BOT Approval of Construction Delivery Method	October 2021	October 2021	↑	-
Student and Staff Use	August 2023	August 2023	↑	-

6. Budget

6.1 Program Summary

Budget Group	Original Budget	Current Budget	Commitments	Expenditures	% of Budget Committed	% of Commitment Expended
Management, Design, & Pre-Construction	\$105,160,598	\$101,535,229	\$28,662,422	\$9,122,950	28%	32%
Investigation, Testing & Verification	\$9,330,450	\$9,330,450	\$315,863	\$212,035	3%	67%
Construction, Equipment & Furnishings	\$463,778,252	\$475,782,761	\$4,509	\$4,509	0%	100%
Misc.	\$439,079	\$568,825	\$137,375	\$145,170	24%	106%
Contingency	\$21,291,621	\$24,782,735	\$0	\$0	0%	0%
Total Project Budget	\$600,000,000	\$600,000,000	\$29,120,168	\$9,484,664		
% of Total Project Budget Committed	4.85%					
% of Total Commitments Expended	32.57%					
% of Total Project Budget Expended	1.58%					

6.2 Phase 1

Wylie Campus

Budget Group	Original Budget	Current Budget	Commitments	Expenditures	% of Budget Committed	% of Commitment Expended
Management, Design, & Pre-Construction	\$15,051,440	\$12,776,022	\$12,657,010	\$4,830,637	99%	38%
Investigation, Testing & Verification	\$2,679,247	\$2,679,247	\$175,250	\$117,933	7%	67%
Construction, Equipment & Furnishings	\$133,174,284	\$133,177,133	\$2,849	\$2,849	0%	100%
Misc.	\$126,082	\$227,091	\$102,254	\$102,539	45%	100%
Contingency	\$6,571,649	\$8,743,209	\$0	\$0	0%	0%
Total Project Budget	\$157,602,702	\$157,602,702	\$12,937,363	\$5,053,958		
% of Total Project Budget Committed	8.21%					
% of Total Commitments Expended	39.06%					
% of Total Project Budget Expended	3.21%					

Technical Campus

Budget Group	Original Budget	Current Budget	Commitments	Expenditures	% of Budget Committed	% of Commitment Expended
Management, Design, & Pre-Construction	\$14,713,206	\$13,363,255	\$13,255,412	\$4,292,312	99%	32%
Investigation, Testing & Verification	\$2,619,039	\$2,619,039	\$126,513	\$94,102	5%	74%
* Construction, Equipment & Furnishings	\$130,181,602	\$142,183,262	\$1,660	\$1,660	0%	100%
Misc.	\$123,249	\$148,098	\$28,871	\$36,382	19%	126%
Contingency	\$6,423,972	\$7,747,414	\$0	\$0	0%	0%
Allen ISD Reimbursement	-	(\$12,000,000)	-	-		
Total Project Budget	\$154,061,068	\$154,061,068	\$13,412,455	\$4,424,456		
% of Total Project Budget Committed	8.71%					
% of Total Commitments Expended	32.99%					
% of Total Project Budget Expended	2.87%					

* Actual Budget from Collin College bond funds is \$130,181,602 (\$142,181,602 less \$12,000,000 Allen ISD Reimbursement)

6.3 Phase 2

Celina Campus

Budget Group	Original Budget	Current Budget	Commitments	Expenditures	% of Budget Committed	% of Commitment Expended
Management, Design, & Pre-Construction	\$5,078,807	\$5,078,807	\$1,067,000	\$0	21%	0%
Investigation, Testing & Verification	\$936,908	\$936,908	\$0	\$0	0%	0%
Construction, Equipment & Furnishings	\$46,569,862	\$46,569,862	\$0	\$0	0%	0%
Misc.	\$44,090	\$47,978	\$5,010	\$5,010	10%	100%
Contingency	\$2,482,596	\$2,478,708	\$0	\$0	0%	0%
Total Project Budget	\$55,112,263	\$55,112,263	\$1,072,010	\$5,010		
% of Total Project Budget Committed	1.95%					
% of Total Commitments Expended	0.47%					
% of Total Project Budget Expended	0.01%					

Farmersville Campus

Budget Group	Original Budget	Current Budget	Commitments	Expenditures	% of Budget Committed	% of Commitment Expended
Management, Design, & Pre-Construction	\$2,539,404	\$2,539,404	\$533,500	\$0	21%	0%
Investigation, Testing & Verification	\$468,453	\$468,453	\$14,100	\$0	3%	0%
Construction, Equipment & Furnishings	\$23,284,932	\$23,284,932	\$0	\$0	0%	0%
Misc.	\$22,045	\$22,045	\$1,240	\$1,240	6%	100%
Contingency	\$1,241,298	\$1,241,298	\$0	\$0	0%	0%
Total Project Budget	\$27,556,132	\$27,556,132	\$548,840	\$1,240		
% of Total Project Budget Committed	1.99%					
% of Total Commitments Expended	0.23%					
% of Total Project Budget Expended	0.00%					

IT Center of Excellence

Budget Group	Original Budget	Current Budget	Commitments	Expenditures	% of Budget Committed	% of Commitment Expended
Management, Design, & Pre-Construction	\$5,472,853	\$5,472,853	\$1,149,500	\$0	21%	0%
Investigation, Testing & Verification	\$1,009,600	\$1,009,600	\$0	\$0	0%	0%
Construction, Equipment & Furnishings	\$50,183,042	\$50,183,042	\$0	\$0	0%	0%
Misc.	\$47,510	\$47,510	\$0	\$0	0%	0%
Contingency	\$2,675,210	\$2,675,210	\$0	\$0	0%	0%
Total Project Budget	\$59,388,215	\$59,388,215	\$1,149,500	\$0		
% of Total Project Budget Committed	1.94%					
% of Total Commitments Expended	0.00%					
% of Total Project Budget Expended	0.00%					

6.4 Phase 3

Preston Ridge Campus (Welcome Center)

Budget Group	Original Budget	Current Budget	Commitments	Expenditures	% of Budget Committed	% of Commitment Expended
Total Project Budget	\$26,329,788	\$26,329,788	\$0	\$0		
% of Total Project Budget Committed	0.00%					
% of Total Commitments Expended	0.00%					
% of Total Project Budget Expended	0.00%					

Central Park Campus (Welcome Center)

Budget Group	Original Budget	Current Budget	Commitments	Expenditures	% of Budget Committed	% of Commitment Expended
Total Project Budget	\$36,861,704	\$36,861,704	\$0	\$0		
% of Total Project Budget Committed	0.00%					
% of Total Commitments Expended	0.00%					
% of Total Project Budget Expended	0.00%					

6.5 Phase 4

Preston Ridge (Existing Repurpose)

Budget Group	Original Budget	Current Budget	Commitments	Expenditures	% of Budget Committed	% of Commitment Expended
Total Project Budget	\$7,321,091	\$7,321,091	\$0	\$0		
% of Total Project Budget Committed	0.00%					
% of Total Commitments Expended	0.00%					
% of Total Project Budget Expended	0.00%					

Central Park (Existing Repurpose)

Budget Group	Original Budget	Current Budget	Commitments	Expenditures	% of Budget Committed	% of Commitment Expended
Total Project Budget	\$9,151,364	\$9,151,364	\$0	\$0		
% of Total Project Budget Committed	0.00%					
% of Total Commitments Expended	0.00%					
% of Total Project Budget Expended	0.00%					

Central Park (Traffic / Wayfinding)

Budget Group	Original Budget	Current Budget	Commitments	Expenditures	% of Budget Committed	% of Commitment Expended
Total Project Budget	\$7,826,795	\$7,826,795	\$0	\$0		
% of Total Project Budget Committed	0.00%					
% of Total Commitments Expended	0.00%					
% of Total Project Budget Expended	0.00%					

Preston Ridge (Wayfinding)

Budget Group	Original Budget	Current Budget	Commitments	Expenditures	% of Budget Committed	% of Commitment Expended
Total Project Budget	\$2,546,293	\$2,546,293	\$0	\$0		
% of Total Project Budget Committed	0.00%					
% of Total Commitments Expended	0.00%					
% of Total Project Budget Expended	0.00%					

Budget Group	Original Budget	Current Budget	Commitments	Expenditures	% of Budget Committed	% of Commitment Expended
Total Project Budget	\$5,092,585	\$5,092,585	\$0	\$0		
% of Total Project Budget Committed	0.00%					
% of Total Commitments Expended	0.00%					
% of Total Project Budget Expended	0.00%					

6.6 Building Fund Reimbursement

Budget Group	Original Budget	Current Budget	Commitments	Expenditures	% of Budget Committed	% of Commitment Expended
Building Fund Reimbursement	\$51,150,000	\$51,150,000	\$0	\$0	\$0	\$0
Total Project Budget	\$51,150,000	\$51,150,000	\$0	\$0		
% of Total Project Budget Committed	0.00%					
% of Total Commitments Expended	0.00%					
% of Total Project Budget Expended	0.00%					

7. Completed Items

7.1 General Program

- AECOM conducted coordination meetings with the Executive Committee on April 2nd, 9th, 16th, 24th & 30th
- AECOM, Acari Management, Inc. & Collin conducted a Phase 2 Outreach Event at the Spring Creek Campus on April 3rd
- AECOM provided an overview of the March '18 Monthly Report to the Collin College Campus Facilities & Construction Committee on April 17th

7.2 Procurement

- RFQ 4159 – Architectural and Engineering Services for Phase 2 projects was issued on April 6th
- RFQ 4141 – Materials Testing and Observations Services evaluations were completed on April 17th
- AECOM and Collin College conducted a Program Procurement review meeting on April 25th
- On April 30th, AECOM and Collin College conducted a Phase 2 Architectural and Engineering Pre-Qualification conference at the CHEC Building for RFQ's 4159

7.3 Design

- Collin College, AECOM, Page Southerland Page, Inc. and Skanska USA Building, Inc. conducted the Wylie Campus Weekly Project Meeting on April 3rd
- Collin College, AECOM, Perkins+Will, Inc. and McCarthy Building Companies, Inc. conducted the Technical Campus Weekly Project Meeting on April 3rd
- AECOM, Perkins+Will, Inc., and McCarthy Building Companies, Inc. met on April 5th to review the level of completeness of the GMP documents
- Collin College, AECOM, Page Southerland Page, Inc. and Skanska USA Building, Inc. conducted the Wylie Campus Weekly Project Meeting on April 10th
- Collin College, AECOM, Perkins+Will, Inc. and McCarthy Building Companies, Inc. conducted the Technical Campus Weekly Project Meeting on April 10th
- Page Southerland Page, Inc. conducted Design Development Workshops with AECOM and Collin College for the Wylie Campus on April 12th
- Page Southerland Page, Inc. conducted a visioning session for interior areas with AECOM and Collin College for the Wylie Campus on April 16th

- Collin College, AECOM, Perkins+Will, Inc., GME Consulting Engineers and McCarthy Building Companies, Inc. met on April 16th to discuss the geotechnical report for the Technical Campus
- Collin College, AECOM, Page Southerland Page, Inc. and Skanska USA Building, Inc. conducted the Wylie Campus Weekly Project Meeting on April 17th
- Collin College, AECOM, Perkins+Will, Inc. and McCarthy Building Companies, Inc. conducted the Technical Campus Weekly Project Meeting on April 17th
- AECOM, Perkins+Will, Inc., Pacheco Koch and McCarthy Building Companies, Inc. met with the City of Allen on April 17th to discuss the roadway and drainage concepts for the Technical Campus
- Perkins+Will, Inc. submitted the Design Development documents for the Technical Campus on April 19th
- Collin College, AECOM, Page Southerland Page, Inc. and Skanska USA Building, Inc. conducted the Wylie Campus Weekly Project Meeting on April 24th
- Collin College, AECOM, Perkins+Will, Inc. and McCarthy Building Companies, Inc. conducted the Technical Campus Weekly Project Meeting on April 24th
- AECOM and Perkins+Will, Inc. did a site visit of the Spring Creek Campus on April 27th to review the food service equipment area to assist in the planning of the food service areas for the Technical Campus
- Page Southerland Page, Inc. conducted a visioning session for interior areas with AECOM and Collin College for the Wylie Campus on April 30th

7.4 Pre-Construction

- AECOM and Perkins+Will, Inc. attended the City of Allen Planning and Zoning Commission meeting for the Technical Campus on April 3rd – concept plan was approved
- Collin College, AECOM, Page Southerland Page, Inc. and Skanska USA Building, Inc. conducted a scheduling review meeting on April 4th
- Collin College, AECOM, Page Southerland Page, Inc. and Skanska USA Building, Inc. met on April 17th to review the control estimate for the Wylie Campus
- Collin College, AECOM, and Skanska USA Building, Inc. conducted a scheduling review meeting on April 23rd
- AECOM and Perkins+Will, Inc. attended the City of Allen City Council meeting for the Technical Campus on April 24th – concept plan was approved

7.5 Construction

- No Construction Phase Items are complete

7.6 Acceptance and Close-Out

- No Acceptance and Close-Out Phase Items are complete

8. Pending Items

8.1 General Program

- None

8.2 Procurement

- Issuance of an RFQ for Phase 2 Construction Manager-at-Risk services

8.3 Design

- Completion and acceptance of Design Development for the Wylie Campus

8.4 Pre-Construction

- GMP estimate submittal and reconciliation for the Technical Campus
- Continuous cost estimate based on Design Development drawings for the Wylie Campus

8.5 Construction

- Demolition of existing structures is underway at the Wylie Campus location

8.6 Acceptance and Close-Out

- No Acceptance and Close-Out activities are underway at this time

Appendix A – Schedule Milestone Definitions

BOT Approval of Program Manager – Establishes that a project is Board of Trustees approved and the Program Manager shall begin efforts to complete the project.

BOT Approval of A/E Procurement Method – Approval by the Board of Trustees of the methods used to procure the Architect.

BOT Approval of Construction Delivery Method – Approval by the Board of Trustees of the construction delivery method. Typically Construction Manager-at-Risk or Competitive Sealed Proposal.

BOT Approval of Recommended Firms – Acceptance of firm recommendations by the Board of Trustees.

Architect Mobilized – Completion of negotiations, execution of contracts, and issuance of Notice to Proceed.

Schematic Design Submittal – Initial design schemes that seek to define the general scope and conceptual design of the project including scale and relationships between building components.

Design Development Submittal – Site Plans, Elevations & Floorplans that define and describe all important aspects of the project.

Construction Document Submittal – Detailed specifications, details, illustrations, and instructions on all aspects of the facility. Used to obtain project bids and to construct the facility.

BOT Approval of GMP (Site) – Board of Trustees approval of the Guaranteed Maximum Price to complete the site work.

Contractor Mobilized – Notice to Proceed issued for the Site Work. Contractor on site and ready to start.

BOT Approval of GMP (Facility) – Board of Trustees approval of the Guaranteed Maximum Price to complete the facility work.

Foundations Complete – Mass grading & piers complete, project. There after the project is less affected by rain, mud and subterranean conditions.

Building Top Out – All major structural components are in place (including the highest component) for the facility. Project less susceptible to material shortages or delays.

Building Dry-In – Roofing and windows are complete and the building is water resistant. The project overall is less susceptible to weather as most of the work is conducted indoors.

Building Energized – The building has power. This is an indication that utilities are in place, significant electrical work is complete, and many significant city inspections have been passed.

Building Climatized – The HVAC system is functional. Weather sensitive materials can be installed.

Temporary CO – The city has agreed that the building is significantly constructed in accordance with local codes and is occupiable. There may be outstanding landscaping requirements.

Final CO – The city has agreed that the building is constructed in accordance with local codes and is occupiable. There may be outstanding landscaping requirements

Substantial Completion – All materials are in place, all systems are functional, and the owner can use the building for its intended purpose with only minor punch-list items remaining. Warranties will commence.

Final Completion – All punchlist items are complete. The Contractor is complete.

Student Occupancy – Success!