



Inland Empire Children's Cabinet

Presented by the Inland Empire
Community Collaborative



Overview

Mission

This two-county Children's Cabinet will support children, youth, and families and improve the ability to advance health and racial equity in our communities.

Vision

The IE Children's Cabinet key roles—elevating community voices, facilitating multi-sector dialogues and aligning organizations and systems—fuels powerful and sustainable changes that reflect the needs of the children and families in the community. Advocating as a unified voice for children in the region at the local and state level.



Why a Children's Cabinet?

The focus of the Children's Cabinet is to address social determinants of health to improve the health and wellness of children by mitigating Adverse Childhood Experiences (ACEs).





The Big Picture

The IE Children's Cabinet aims to work on addressing policy solutions through collaboration that help to improve the quality of life for children and families in the region. The Inland Empire has some of the highest health disparities in the state with a great need for deeply rooted systems change.

Timeline of Historical Wins (2021-2022)

2021

- **ARPA Funding Letters in Riverside and San Bernardino Counties**
- Child Care Talking Points
- **Child Care Day**
- **Policy Action Plans**
 - 7 Policy Options
 - 2 Proposals
- **Ongoing Technological Infrastructure Developed**
- Cabinet Growth

2022

- **Grants:** Gates, The California Wellness, First 5 SB, First 5 Riverside, The Weingart Foundation.
- Nonprofit Advocacy Tools
- Advancement Project: Funding Racial Justice: Budget Advocacy Training for Community Power
- Funding the Next Generation
- Cannabis Tax Revenue and Local Budget Research

Timeline of Historical Wins (2023-2024)

2023

- **Advocacy Work in DC**
 - Esri FedGIS Conference & met with congressional representatives
- Development of materials and datasets for advocacy.
- Health & Wellness Committee: Community Landscape Survey
- **UCR School of Public Policy Partnership**
- **Hired Additional Staff (Reina Diaz)**
- Development of Committee Goals and Indicators
- All pillar committees operational
- **Advocacy meetings with state legislative officials**
- Development of Governance Documents
- ECE Voices: Regional Director Leadership and Training

2024

Accomplishments

- Member Onboarding Survey and Member Mapping
- Ongoing Cabinet Bylaws and other Governance Documents
- Strategic Planning and Theory of Change Completed
- **Hired Additional Staff (Joseph Parsons)**

Legislative Advocacy

- Prop 35: MCO Tax Initiative
- Endorsement of Legislation:
 - Sacramento Testimony on Child Care
 - Nonprofit Contact Equity Work
- All Children Thrive : Establishment of Community Table

New Grant Funding (\$250,000)

- \$100,000 Gates Foundation, \$100,000 Weingart Foundation, \$50,000 Policy Link, \$200,000 All Children Thrive CA

Timeline of Historical Wins (2025)

- **Grants**

- \$100,000 Parkview Legacy Foundation
- \$100,000 IE Funders Alliance Capacity Building Grants
- \$150,000 OCPSC Grant

- **Launched Youth for Change Alliance (YCA) in Adelanto;** recruited 15 youth and adult participants for the Design Team.

- Conducted multiple youth-led workshops on public policy and trauma-informed advocacy.

- Community Listening and Learning Sessions in Riverside County (Mecca and Jurupa Valley) to inform First 5 Riverside County strategic planning and elevate parent voices.

- **Partnered with the California Youth Empowerment Commission to host the Voices for Change Listening Forum** with 121 attendees, including 55 youth—the largest youth-centered listening session for any California State Commission to date.

- **Launched Rooted & Rising Internship Project**

- **Accepted to 2026 Cost Modeling Cohort**


- Supported immigrant justice initiatives, including Know Your Rights training and advocacy against ICE enforcement in schools.

- **Endorsed or Supported Legislation Including:**

- **SB 48** – Restricts ICE access to school sites and student information.
- **AB 49** – Protects immigrant communities and school safety.
- **AB 29** – Expands Medi-Cal reimbursement for ACEs trauma screenings to community-based organizations and doulas.
- **AB 37** – Expands mental health workforce serving people experiencing homelessness.
- **AB 495** – Expands eligibility for relatives to serve as caregivers for children of deported families
- **AB 753** – Creates a temporary assistant teacher permit to address childcare workforce shortages.
- [In Progress] Advanced **dyadic care policy** by collaborating with Assemblymember Garcia and California Primary Care Association to remove same-day billing restrictions for behavioral health and medical visits.
- Advocated for child care funding protections and increased reimbursement rates in California's state budget.

Historical Collaborative Grant Funding

- **First 5 San Bernardino Grants**
~\$780,000+, Autism Society IE, Children's Fund, Pacific Clinics, Barstow Homeless Services)
- **Community Project Funding**
\$1,000,000 – Consortium for Early Learning Service
- **Nonprofit Riverside County Nonprofit RoundTable Grants**
MALO (50k), ACOA (\$70k), IECC (\$), Sahaba (\$), IEIYC,
- **Riverside County Technical Assistance**
\$2.7m in additional funding (many are cabinet members)
- **OCPSC Trusted Messenger Project**
\$300,000 (Originally \$600,000)



\$5.9+
Million Raised

Codesigning a Public Table

All Children Thrive (ACT)

Funding from ACT will allow for the creation of a Public Table that sits youth, parents, and community partners. It is the intent of the IE Children's Cabinet to call on members of the public table to help shape and integrate ideas on how the table should operate to best support community needs.



Riverside County Community Listening & Learning Session

IECC engaged roughly 42 parents and caregivers raising young children in Riverside County. This included about 35 participants from the community of Mecca and about 7 participants from the community of Jurupa Valley. While Mecca provided the larger sample of voices, feedback from both communities offers a valuable look at shared conditions across the county along with location specific needs and strengths.





Shared Themes

Across Mecca and Jurupa Valley, families described several consistent concerns that shape daily life and impact the wellbeing of young children including:

- **Limited access to services**
- **Strain on family stability due to structural conditions**
- **Need for early childhood supports**



Mecca Analysis

Feedback from Mecca reflected the deepest structural challenges among the two communities.

- **Threats of Deportation and Family Separation**
- **Infrastructure and capacity limitations**
- **Environmental and economic pressures**

Mecca Testimony

In Mecca, the severity of not having timely access to care resulted in many children and youth to live with ongoing conditions for long periods of time without proper medical or specialized attention.

Many families live with constant anxiety due to frequent ICE activity and the threat of deportation. With a high concentration of immigrant farmworker families, parents are often afraid to do everyday tasks like going to the grocery store or picking up their children from school. This fear has created a sense of isolation and uncertainty, making it difficult for families to feel safe in their own community.

- "My daughter broke her arm. We took her to the doctor, and the doctor told us we had to make an appointment with a pediatrician. It took them a week to give us an appointment with the pediatrician, and meanwhile, my daughter spent a week with a broken arm [without medical attention]."
- "If we had a hospital, we wouldn't have to go all the way to Indio to take a child who gets sick at midnight."
- "Doctor appointments are difficult to get quickly. Sometimes you wait a month to see a doctor."
- Some children with undocumented or mixed-status parents reported experiences of bullying at school, which contributed to heightened stress and negatively impacted their mental health.



Jurupa Valley Barriers

Jurupa Valley participants offered a more mixed picture, identifying both challenges and notable strengths present in the community.

- **Limited access to child care**
- **Limited access to culturally competent healthcare** including developmental pediatric care
- **Infrastructure growth with gaps in homeless support**



Jurupa Valley Assets

Community Assets:

- Strong sense of community
- Responsive Community Resources
- Quality Child Care Services
- Proximity to Healthcare Services
- Access to youth programs

Systemic Problems

The severity and root causes differ. Mecca concerns were shaped by geographic isolation, underinvestment, and structural inequities. Jurupa Valley concerns did not focus on distance or basic infrastructure and instead emphasized quality, cultural relevance, and system coordination.



Final Listening Session

Hemet- San Jacinto

- **Hemet Library**
January 29, 2026
6:00 – 8:00 PM
- Partnering with the
Healthy Valley Foundation
- Session will be conducted in English and Spanish.
- Food and Refreshments will be provided.



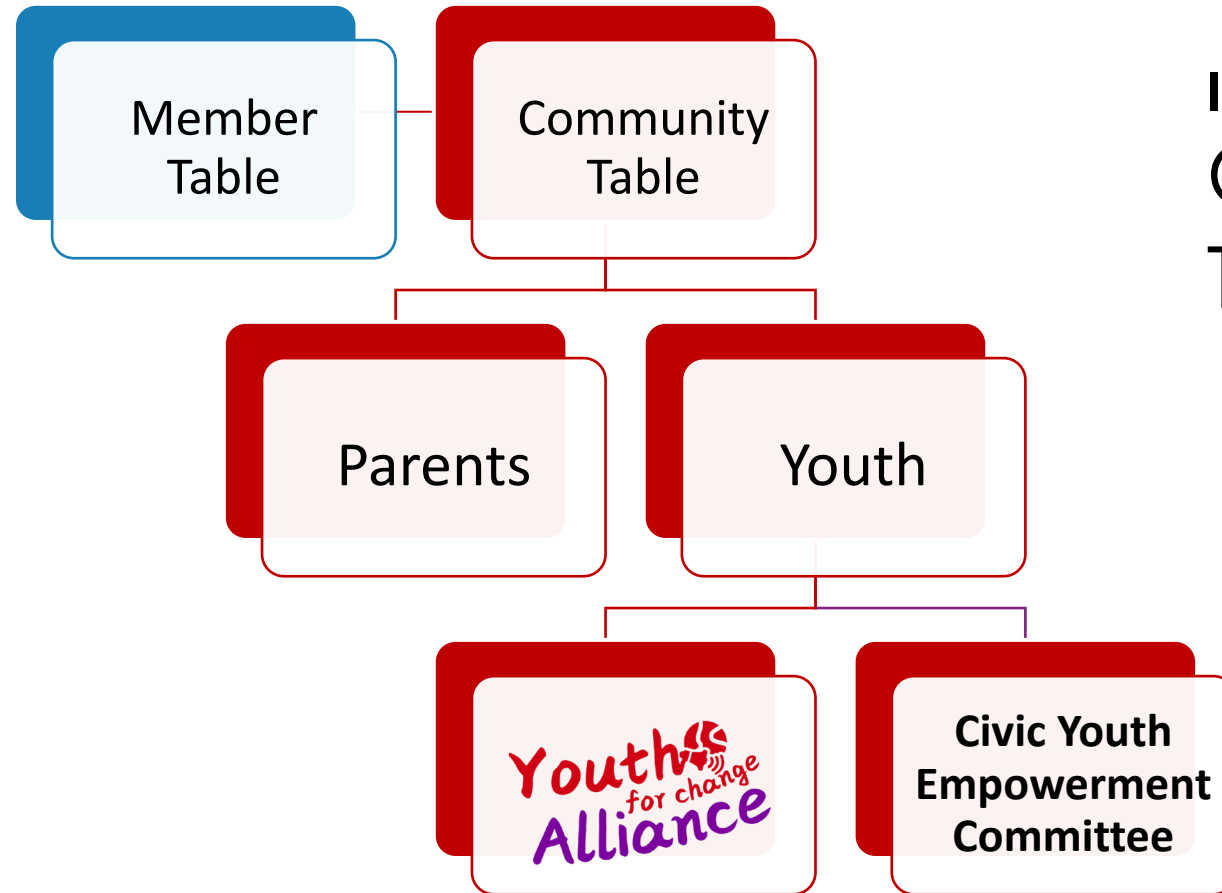
A System Rooted in Advocacy and Equity



The IE Children's Cabinet is focused on drafting policy solutions in four core areas: Basic Needs, Child Care, Youth Education and Health & Wellness.

All pillars are encapsulated by the understanding that the policy solutions recommended by this body will be rooted in advocacy, equity, and justice.

The Community Table

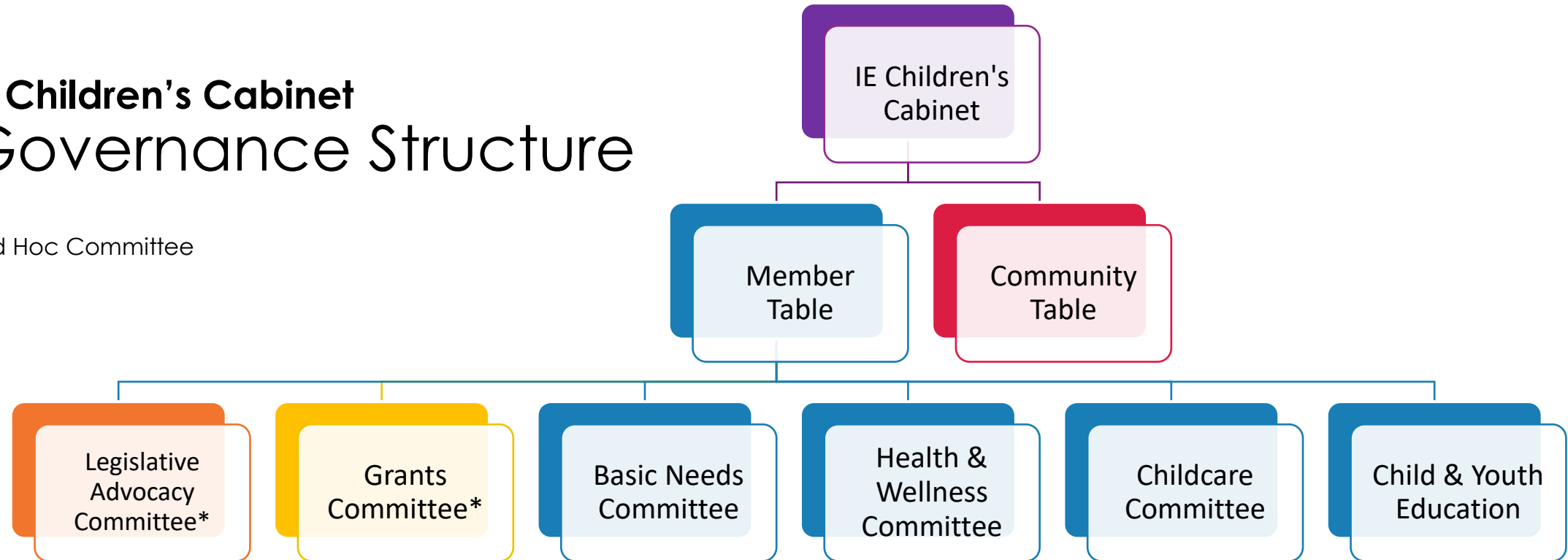


IE Children's Cabinet
Community
Table Structure

The Overall Cabinet Structure (2025)

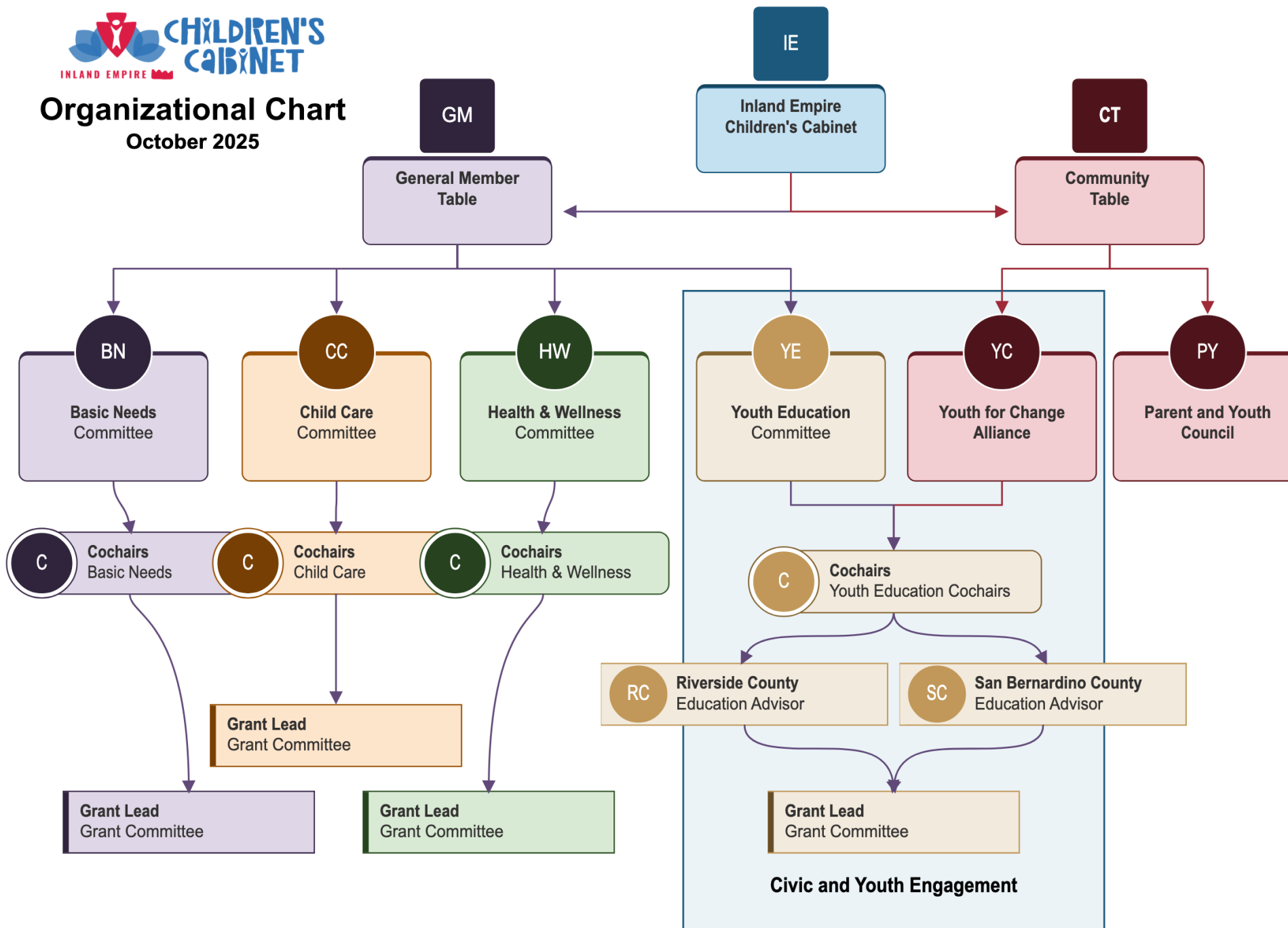
IE Children's Cabinet Governance Structure

*Ad Hoc Committee



Organizational Chart

October 2025





Thank You!

From the Inland Empire Children's
Cabinet and the Inland Empire
Community Collaborative

