



ENROLLMENT PROJECTION 2021-22

Independent School District 877
Buffalo-Hanover-Montrose

November 23, 2020

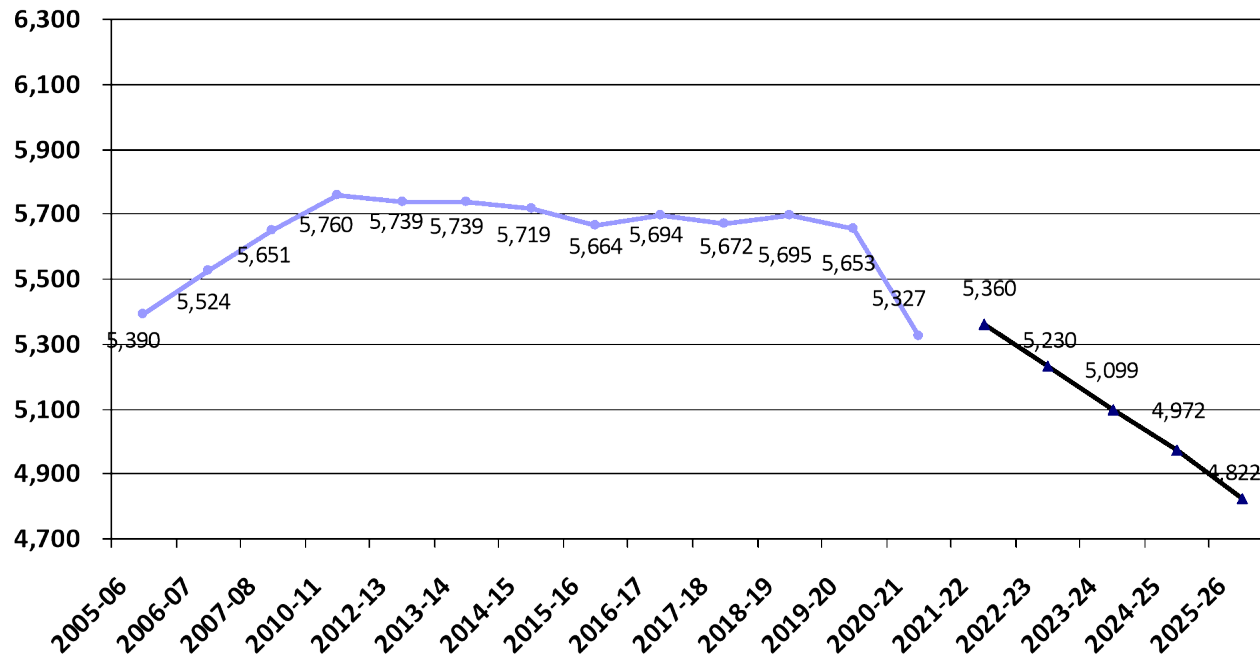


Enrollment Projection Report

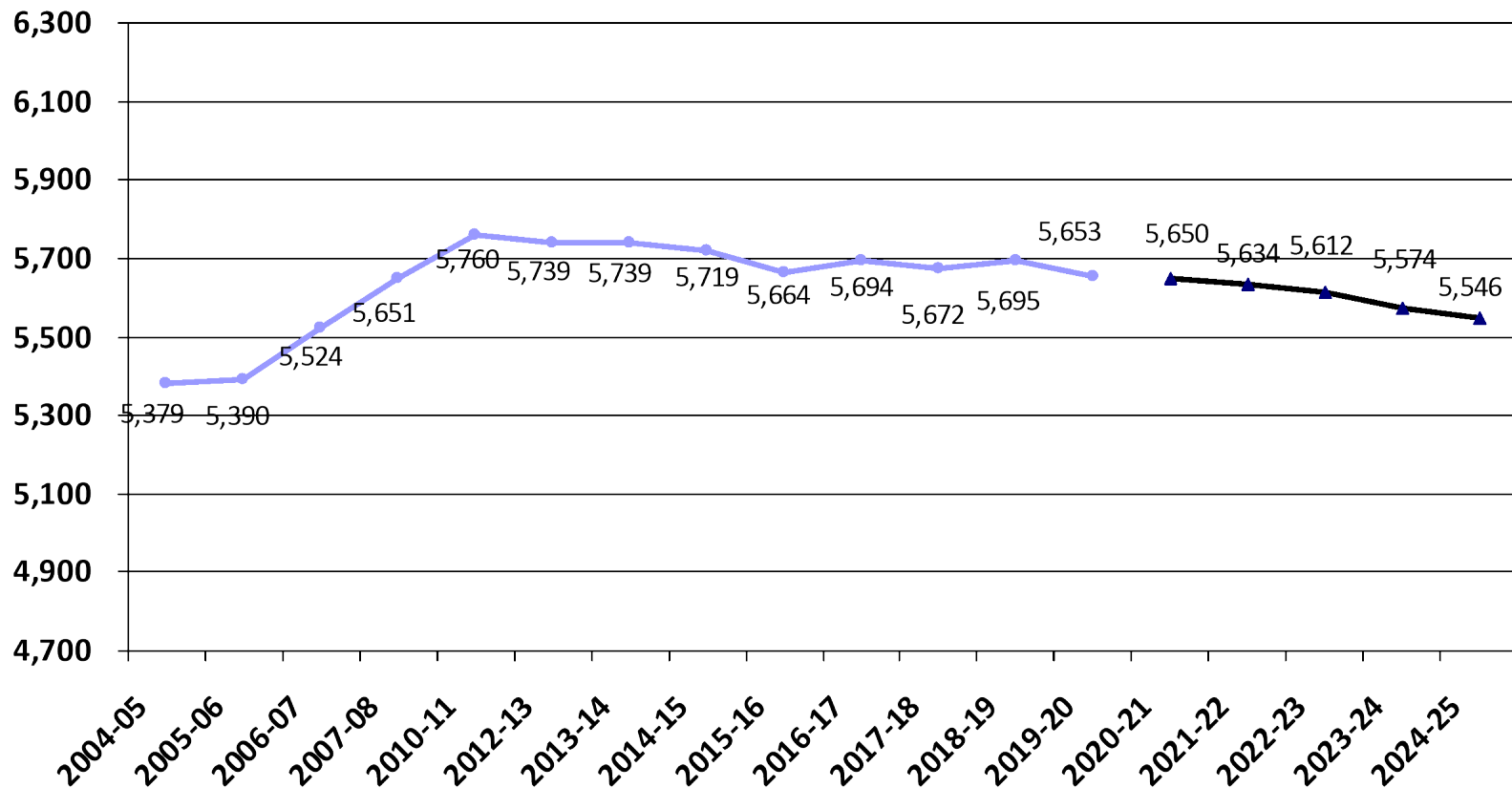
- Review of K-12 enrollment as of Oct. 1st
- Resident enrollment
- Open enrollment & tuition
- Nonpublic enrollment
- Fall vs. spring enrollment
- Review 2020-21 enrollment projection
- 2021-22 enrollment projection



Historical and 2021-22 Projected K-12 Enrollment as of Oct. 1st



Historical and 2020-21 Projected K-12 Enrollment as of Oct. 1st



Review of K-12 Enrollment as of Oct. 1st

- We are behind the projection for 2020-21 by 326 students.
- The five-year enrollment is a decline and currently averaging -67 students/year.
- Total enrollment decline for the past five years is -337 students or -5.92%.
- The totals are greatly skewed due to the COVID-19 pandemic

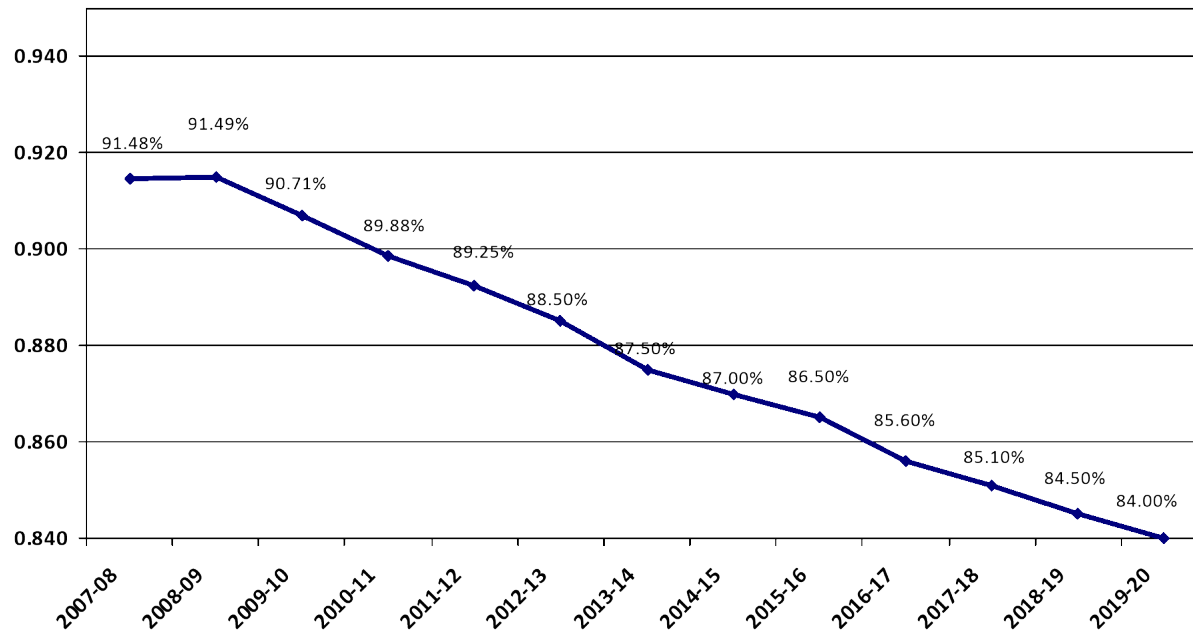
	2016-17	2017-18	2018-19	2019-20	2020-21
K-12 enrollment	5,694	5,672	5,695	5,653	5,327
Change over prior year	30	-22	23	-42	-326
% change	.53%	-.39%	.41%	-.74%	-5.77%

Total Resident Students Enrolled in ISD 877 as of June 30th

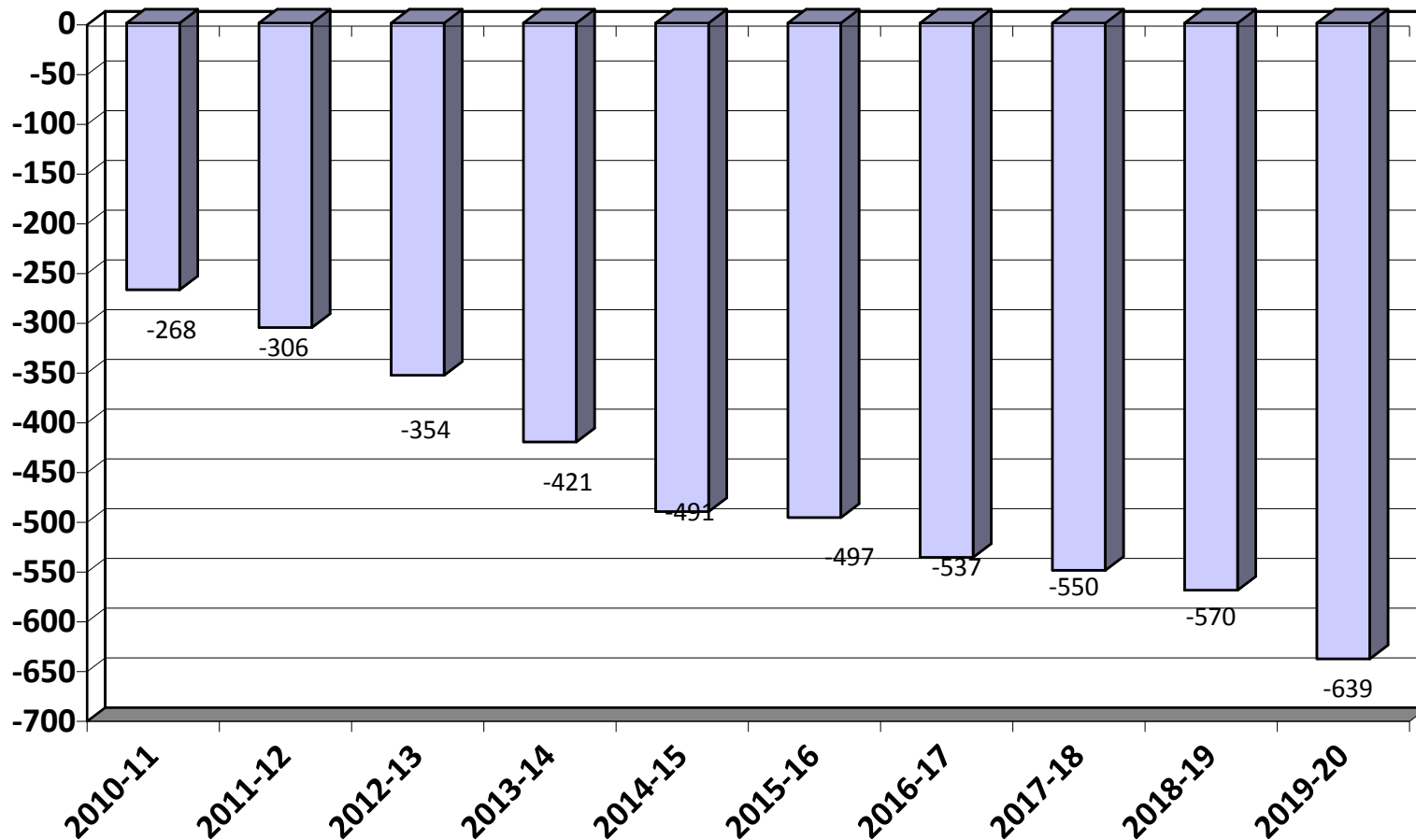
- BHM's resident population and residents served population declined this past year. Residents served was at its second highest point in the last five years but still shows a decline in percentage served vs total population.

	2015-16	2016-17	2017-18	2018-19	2019-20
Residents served	5,369	5,348	5,309	5,323	5,278
Residents going elsewhere	837	902	931	980	1,007
Total Residents	6,206	6,250	6,240	6,303	6,285
Change over prior year	-6	44	10	63	-18
% change	-.10%	.71%	-.16%	1.01%	-.29%
% Served vs Total Population	86.5%	85.6%	85.1%	84.5%	84.0%

Total Resident Students Enrolled in ISD 877 as of June 30th



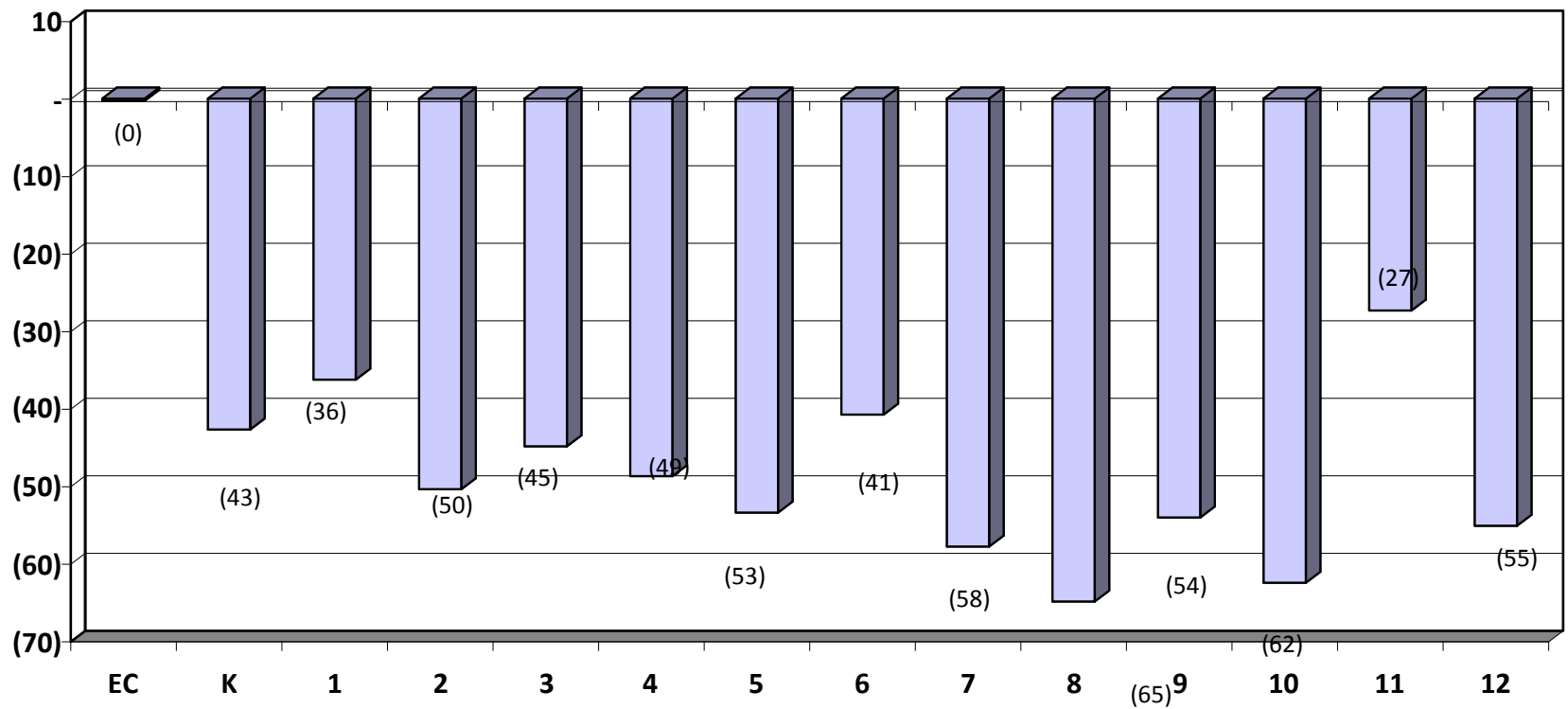
Open Enrollment & Tuition Net Gain/Loss as of June 30th



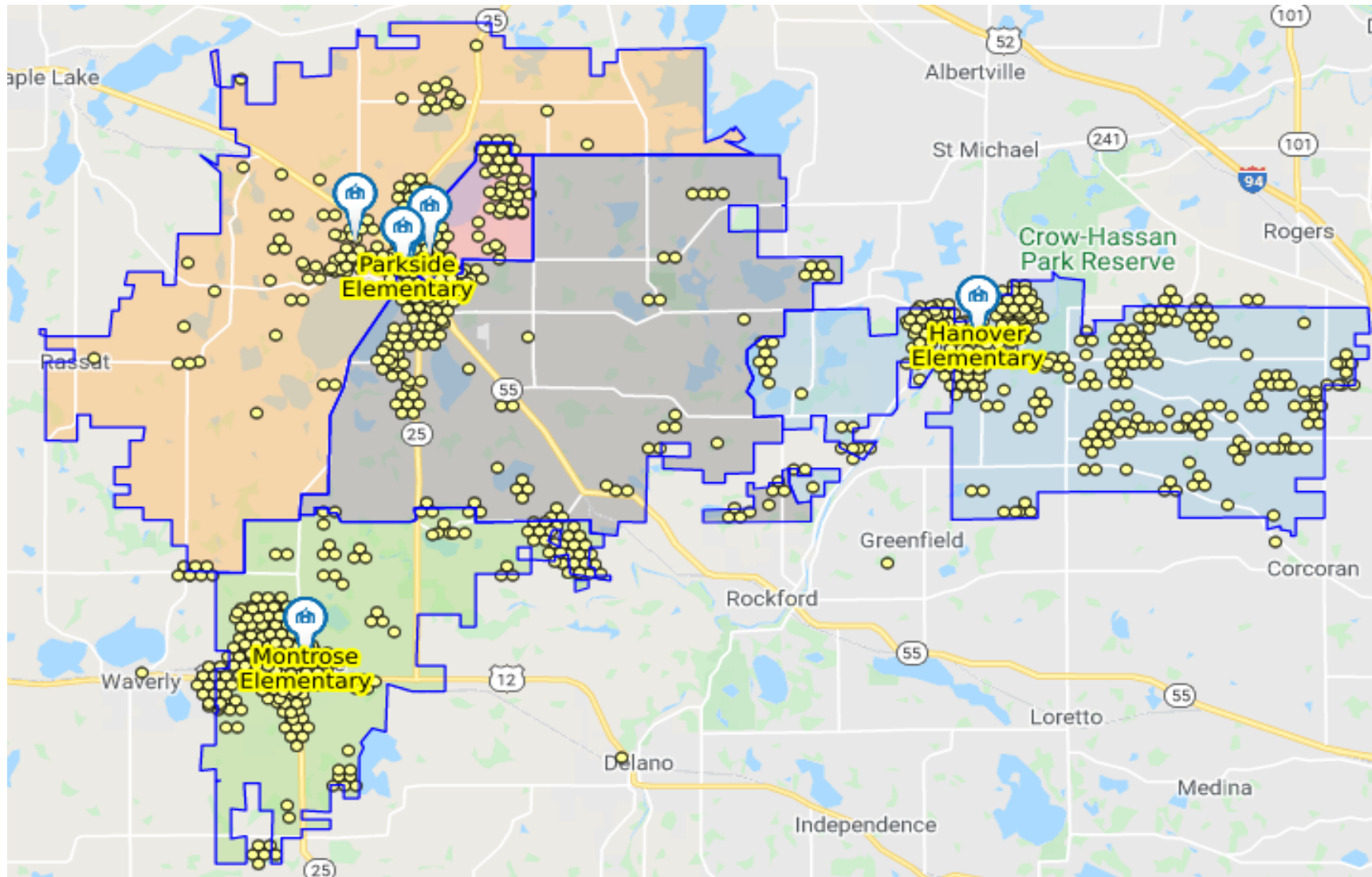
2019-20 Open Enrollment & Tuition Gain/Loss by District as of June 30th

District	In	Out	Net	Prior Year	Targeted Services, Tuition, and Charter/Online			
Delano	2	157	-154	-149	School/District	19-20	18-19	Difference
Rockford	49	202	-153	-155	Southwest Metro Educational Coop	-34	-25	-9
St. Michael-Albertville	82	147	-66	-30	Minnesota Transitions	-31	-24	-7
Watertown-Mayer	7	64	-57	-62	Wright Technical Center	-18	-25	7
Elk River	20	46	-26	-18	Jane Goodall	-17	-21	4
Osseo	0	24	-24	-18	Spectrum High School	-14	-15	1
Orono	1	19	-18	-30	Houston	-9	-12	3
Waconia	3	1	2	0	MAWSECO	-8	-6	-2
Howard Lake-W-W	45	42	3	14	Parnassus School	-7	-7	0
Dassel-Cokato	7	3	3	6	Swan River Montessori	-7	-5	-2
Big Lake	9	3	5	12	Kaleidoscope School	-5	-2	-3
Monticello	45	38	8	11	Eagle Ridge Academy	-5	-4	-1
Annandale	16	7	9	6	Bluesky Charter School	-5	-5	0
Maple Lake	72	31	41	31	Minnesota Online HS	-3	-2	-1

2019-20 Open Enrollment & Tuition by Grade as of June 30th



2020-21 Resident Open Enrolled to Other Districts



2020-21 Resident Open Enrolled to Other Districts

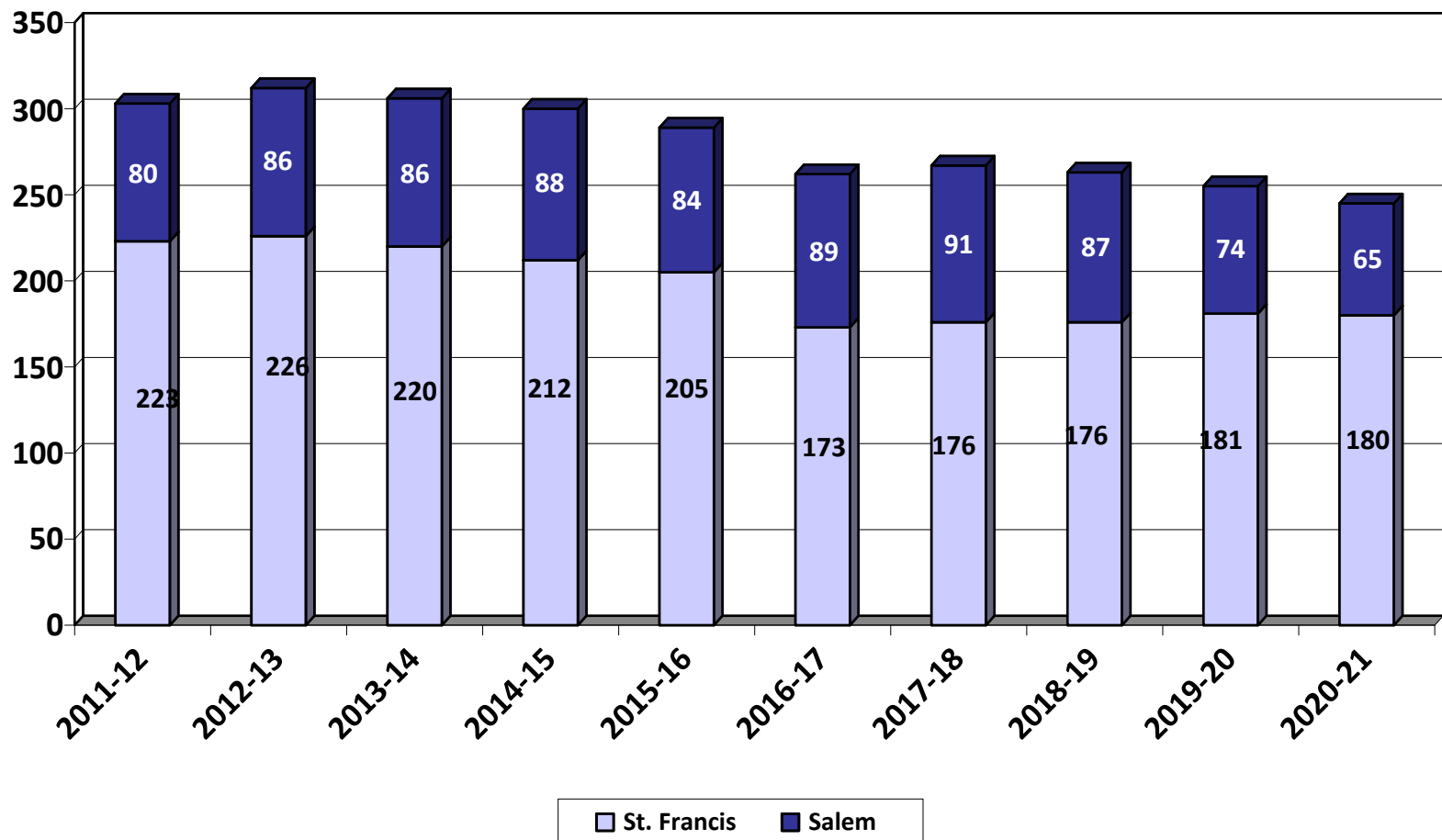
Grade Level	2018-19	2019-20	2020-21	Difference
EC	5	7	4	(3)
Kindergarten	42	46	33	(13)
1-5	345	366	335	(31)
6-8	283	325	277	(48)
9-12	333	380	368	(12)
Total	1,008	1,124	1,017	(107)
Elementary Attendance Area				
Hanover	323	370	324	(46)
Montrose	368	398	350	(48)
Tatanka	74	86	86	-
Parkside	125	129	129	-
Northwinds	104	107	103	(4)
Unknown	14	34	25	(9)
Total	1,008	1,124	1,017	(107)

Nonpublic History

- Two nonpublic schools in the BHM district: St. Francis Xavier in Buffalo and Salem Lutheran in Greenfield.
- Both schools serve students from kindergarten through 8th grade.
- Home school totals not graphed below were 205 on 10/1/16, 184 on 10/1/17, 206 on 10/1/18, 220 on 10/1/19, and **449 on 10/1/2020**

	11-12	12-13	13-14	14-15	15-16	16-17	17-18	18-19	19-20	20-21
Salem	80	86	86	88	84	89	91	87	74	65
St. Francis	223	226	220	212	205	173	176	176	181	180
Total	303	312	306	300	289	262	267	263	255	245
# Change	1	9	-6	-6	-11	-27	5	-4	-4	-10
% Change	.33%	2.97%	-.92%	-1.96%	-3.67%	-9.34%	1.91%	-1.50%	-1.50%	-3.92%

Nonpublic History



2019-20 Enrollment

Fall vs. Spring

- Historically, the district's K-12 enrollment decreases from October 1 to June 1.
- Most of the enrollment drops happen in grades 9-12.
- For 19-20, most of the drop at the high school was due to early graduation due to the COVID-19 pandemic.

	Oct. 1 st , 2019	Jun. 1 st , 2020	Net
K	400	394	-6
Gr. 1-5	2,042	2,016	-26
Gr. 6-8	1,368	1,359	-9
Gr. 9-12	1,843	1,716	-127
Total	5,653	5,485	-168

Historical Enrollment

Fall vs. Spring

- The district had one flat year (2006-07) of enrollment growth. All other years have declined during the year.

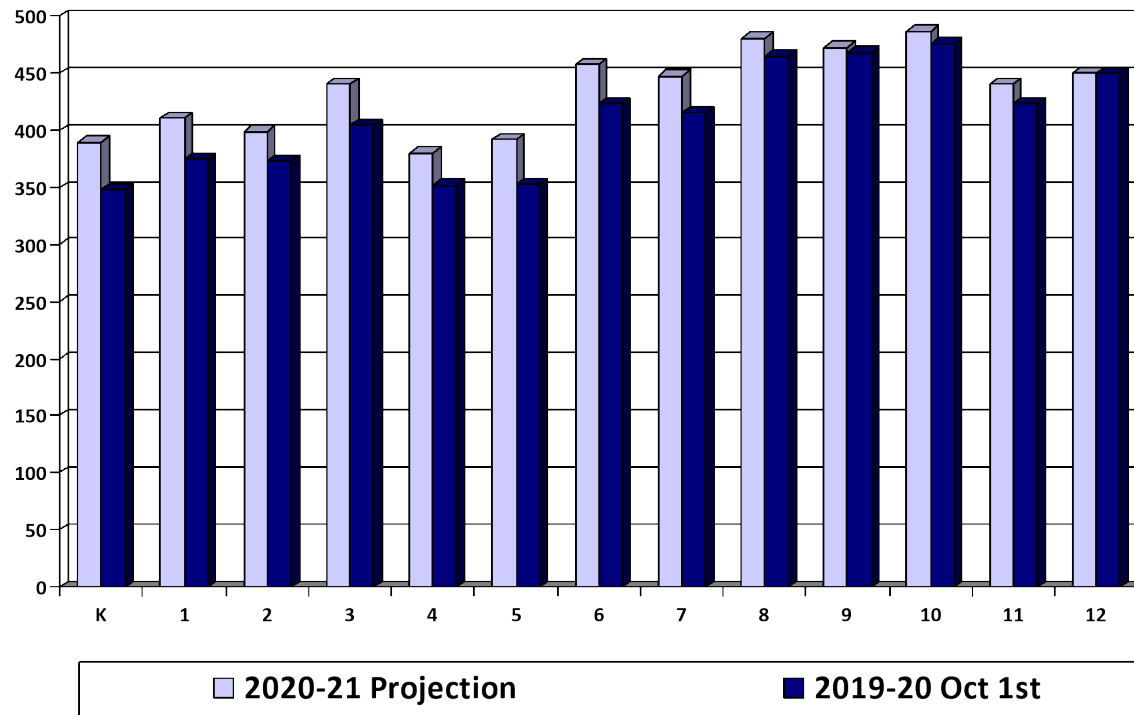
	K	Gr. 1-5	Gr. 6-8	Gr. 9-12	Net
2010-11	1	-11	-10	-63	-83
2011-12	-10	-11	-14	-94	-129
2012-13	-2	-14	1	-86	-101
2013-14	2	-7	2	-127	-130
2014-15	-10	6	-8	-89	-101
2015-16	7	39	-1	-99	-54
2016-17	3	-16	10	-110	-113
2017-18	1	14	-11	-107	-103
2018-19	9	20	-3	-71	-45
2019-20	-6	-26	-9	-127	-168

Review of 2020-21 Enrollment Projection

- Last year's enrollment projection was over-estimated by 323 students largely due to the COVID-19 pandemic.
- Our internal monthly enrollment reports adjust down post-secondary and shared time students.
- The official Oct. 1st MARSS submission by MDE will report a higher enrollment with post-secondary and shared time students.

	2020-21 Projection	2020-21 Oct. 1st	Difference
K	390	348	-42
Gr. 1-5	2,022	1,858	-164
Gr. 6-8	1,387	1,304	-83
Gr. 9-12	1,851	1,817	-34
Total	5,650	5,327	-323

Review of 2020-21 Enrollment Projection by Grade



Enrollment Projection Data



Enrollment Projection Data

- The district uses the Schoolfinances.com enrollment projection model.
- The model allows schools to develop enrollment projections based on three different sets of data:
 - ☐ **October 1st MARSS submission**
 - ☐ **End of Year ADM** is generally used for financial forecast
 - ☐ **District Data** allows schools to enter enrollment history taken at any time, resident ADM or any other historical data by grade

Kindergarten Projection Methods

- **Hold constant** maintains the 2020-21 kindergarten level.
- **Linear projection** is a straightforward mathematical projection based on nothing more than the past five years of data.
- **County birth method** uses the total number of live births in Wright County and examines what percentage of those births enroll in kindergarten. The projection is based on the average percentage of the last four years.
- **Zip code method** examines the zip codes in the district and uses a linear projection of live births on the last four years of data and computes the projected enrollment based on the lowest, average, and highest ratios.
- **District-determined method** examines county birth rates in Wright County and compares that to actual student enrollment numbers in the District and projects that percentage for the next five years.

Kindergarten Projection Methods

Birth Year	Kdgn Enroll Year	Wright Co. Births	Actual Kdgn Enrollment	% of Wright Co. Births Enrolled
2009	2014	1,949	417	21.4%
2010	2015	1,891	370	19.6%
2011	2016	1855	358	19.3%
2012	2017	1829	413	22.6%
2013	2018	1784	391	21.9%
2014	2019	1791	400	22.3%
2015	2020	1764	348	19.7%
2016	2021	1785	366*	20.5%*
2017	2022	1705	350*	20.5%*
2018	2023	1767	362*	20.5%*
2019	2024	1730	355*	20.5%*

* Projected K enrollment based on County births-2-year average

Kindergarten Projection Methods

■ Using Oct. 1st district data

	16- 17	17- 18	18- 19	19- 20	20- 21	21- 22	22- 23	23- 24	24- 25	25- 26
Actual enrollment	358	413	391	400	348					
Hold constant						348	348	348	348	348
Linear projection						369	365	361	357	353
Wright Co. Ave. births						385	375	378	377	373
Zip code method - Low						362	370	379	379	377
District Determined Method						366	350	362	355	353

Enrollment Projection Methods

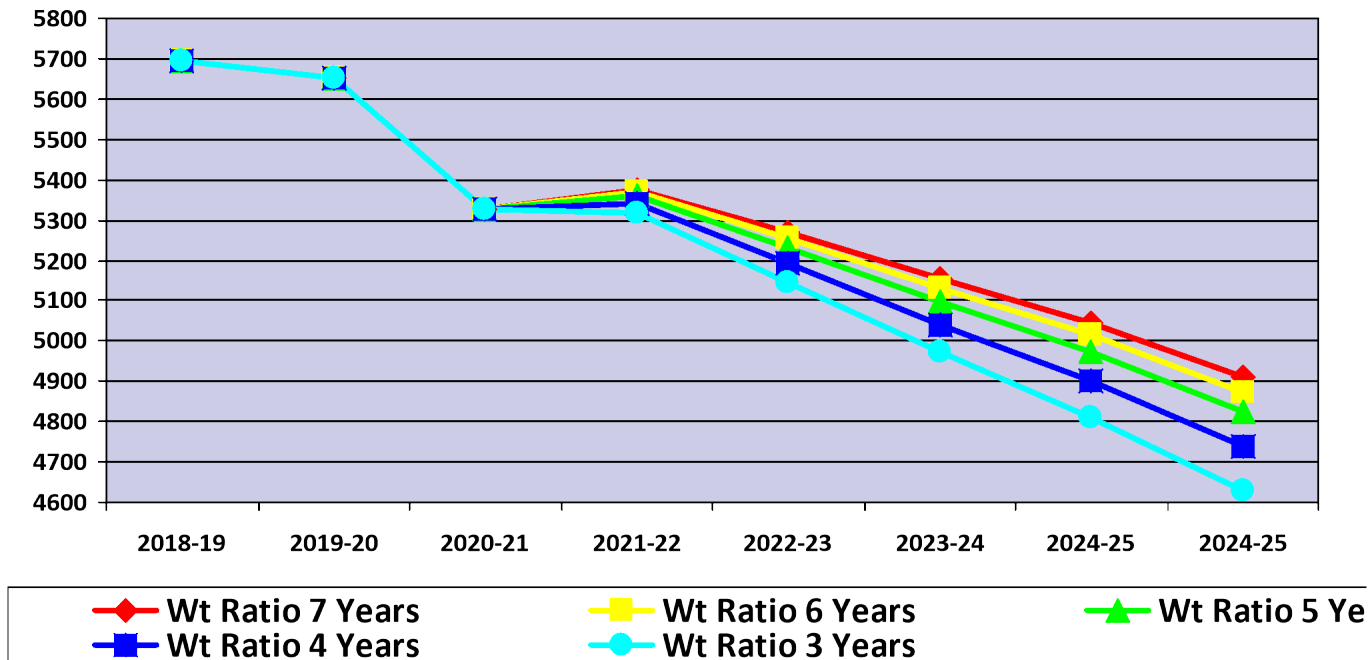
- After the kindergarten enrollment projection is complete, the overall K-12 enrollment is determined by a variety of methods:
 - ☐ Cohort Survival Method
 - ☐ Weighted Cohort Survival Method
 - ☐ Numerical Survival Method
 - ☐ Weighted Numerical Survival Method
 - ☐ Merged Method
- Due to the COVID pandemic, the enrollment projection results vary depending on how many of the students that left the system due to the pandemic for 2020-21 might return for 2021-22
- The final projection method includes an assumption that 50% of the students lost in 2020-21 will return for the 2021-22 school year
- Each 25% change in the assumption changes the projection by approximately 80 students

Projection Methods Comparison

- Using Oct. 1st district data, eighteen different variations were examined.
- The following five were selected for detailed analysis:

	18-19	19-20	20-21	21-22	22-23	23-24	24-25	25-26
Wt Ratio 7 Years	5,695	5,653	5,327	5,375	5,268	5,152	5,043	4,909
Wt Ratio 6 Years	5,695	5,653	5,327	5,369	5,253	5,130	5,014	4,874
Wt Ratio 5 Years	5,695	5,653	5,327	5,358	5,230	5,097	4,972	4,823
Wt Ratio 4 Years	5,695	5,653	5,327	5,340	5,191	5,041	4,900	4,737
Wt Ratio 3 Years	5,695	5,653	5,327	5,316	5,144	4,971	4,810	4,629
Max Difference				59	124	181	233	280

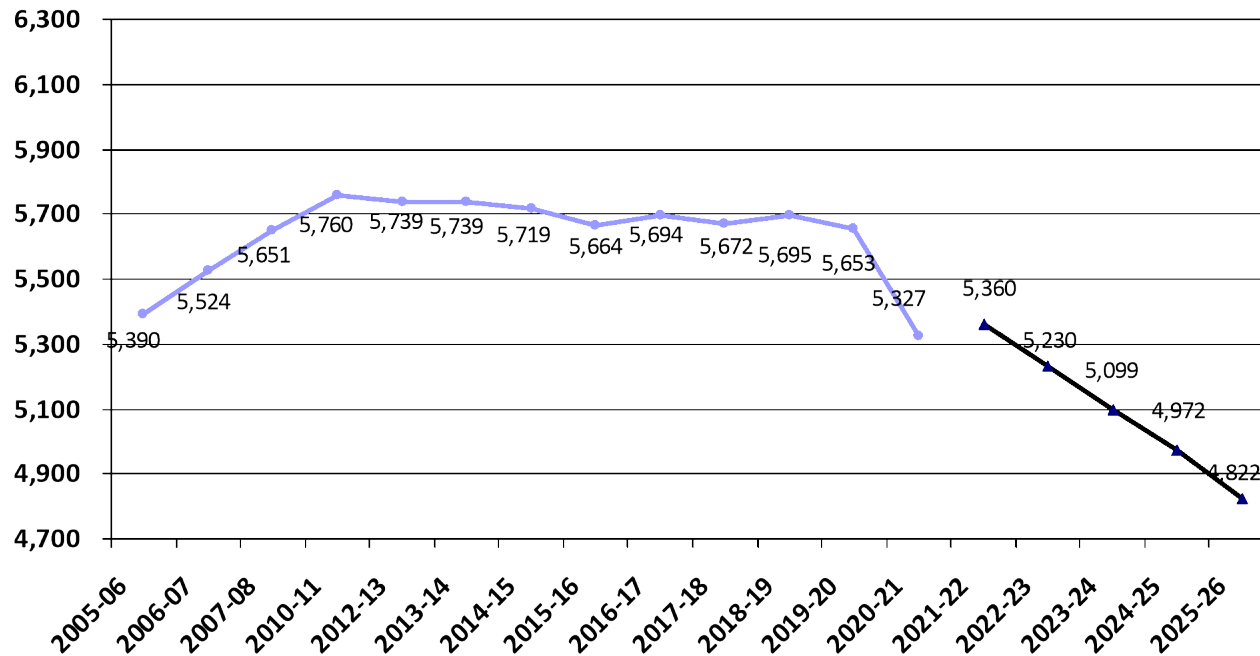
Projection Methods Comparison



2021-22 Enrollment Projection

- Factors considered: housing market, economic conditions, the duration of the current pandemic, Wright County births, and open enrollment
 - 77 2020 Buffalo single family dwelling permits issued - 46 for 2019
 - 17 2020 Hanover single family dwelling permits issued - 16 for 2019
 - 19 2020 Montrose single family dwelling permits issued – 38 for 2019
- 2-year kindergarten attendance average 20.5%
- Weighted ratio 5 years
- K-12 Enrollment 5,360
- Increase of 33 students or 0.06%

Historical and 2021-22 Projected K-12 Enrollment as of Oct. 1st

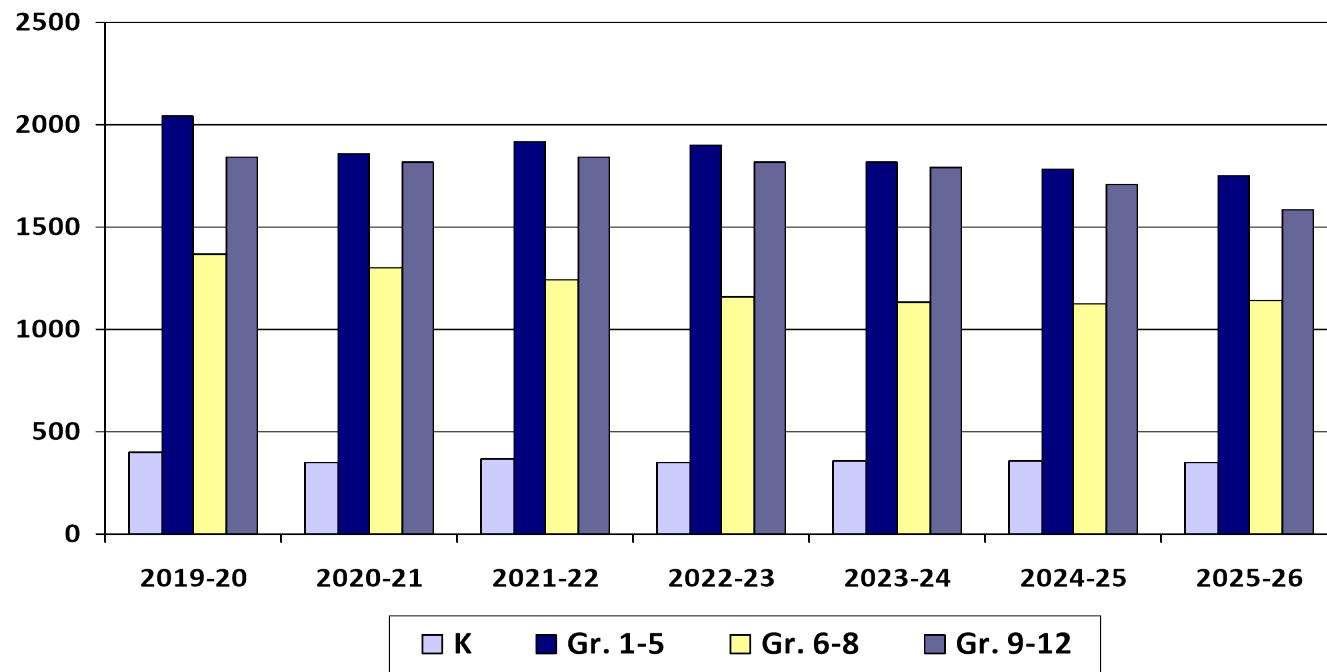


2021-22 Enrollment Projection by Grade Groupings

- With future enrollments, we need to consider building capacity:
 - BHS – 1,935, PHX – 64 and PRIDE – 25
 - BCMS – 1,425
 - Elementary – 3,300

	2019-20	2020-21	2021-22	2022-23	2023-24	2024-25	2025-26
K	400	348	366	350	362	355	353
Gr. 1-5	2,042	1,858	1,916	1,898	1,815	1,784	1,748
Gr. 6-8	1,368	1,304	1,240	1,162	1,132	1,128	1,138
Gr. 9-12	1,843	1,817	1,838	1,820	1,790	1,705	1,583
Total	5,653	5,327	5,360	5,230	5,099	4,972	4,822
	-42	-326	33	-130	-131	-127	-150
	-0.74%	-5.76%	0.62%	-2.43%	-2.50%	-2.49%	-3.02%

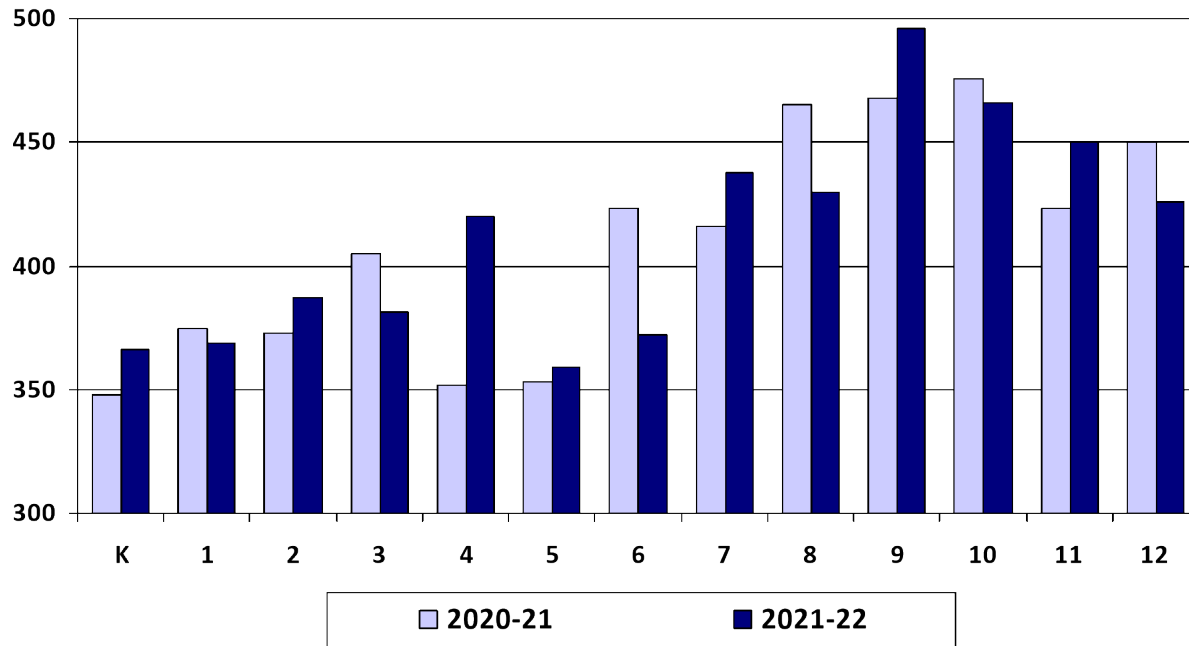
2021-22 Enrollment Projection by Grade Groupings



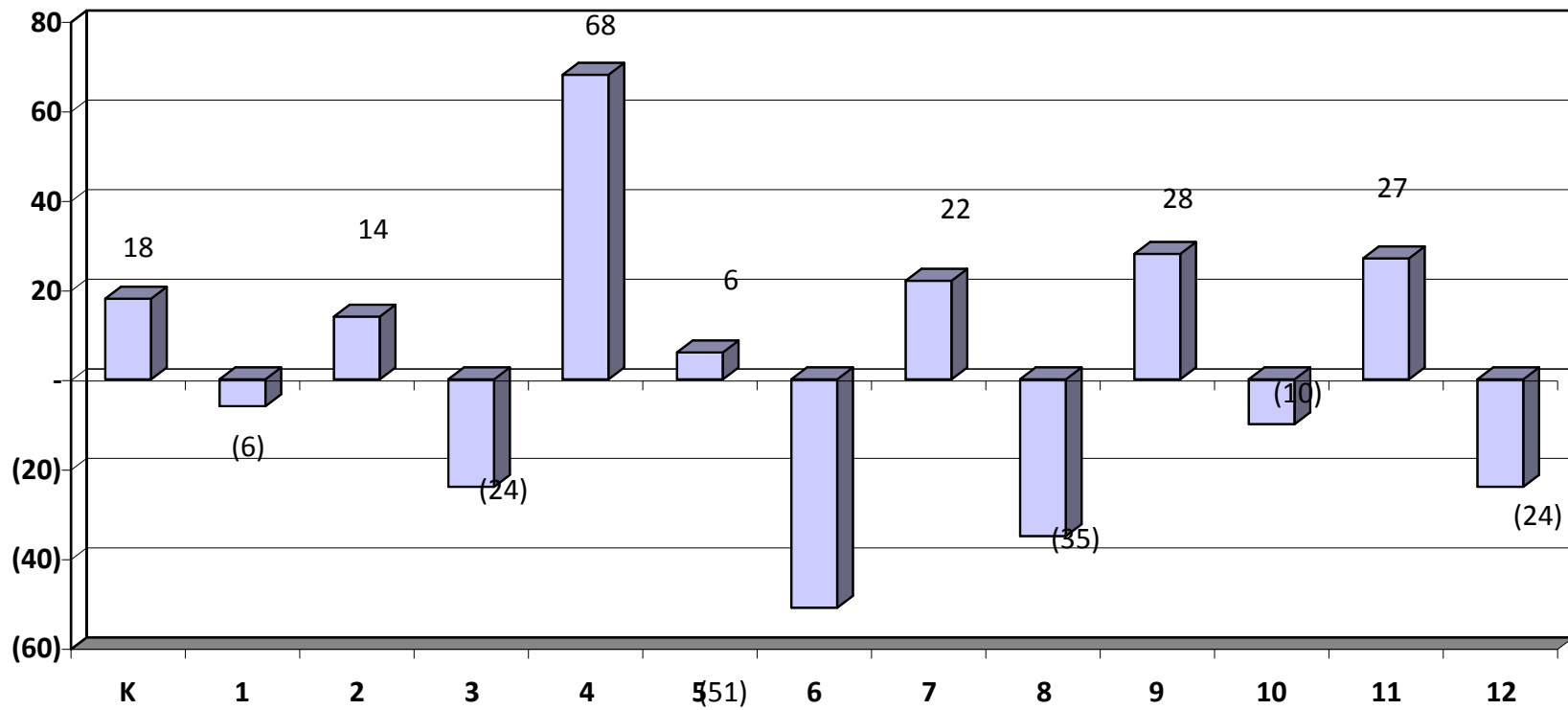
2021-22 Enrollment Projection by Grade

	2020-21	2021-22	2022-23	2023-24	2024-25	2025-26
K	348	366	350	362	355	353
1	375	369	366	350	362	355
2	373	387	363	360	344	356
3	405	381	381	357	354	339
4	352	420	377	378	354	351
5	353	359	411	370	370	347
6	423	372	358	410	369	369
7	416	438	369	355	406	365
8	465	430	435	367	353	404
9	468	496	451	457	385	370
10	476	466	490	446	452	381
11	423	450	435	458	416	421
12	450	426	444	429	452	411
Total	5,327	5,360	5,230	5,099	4,972	4,822

2020-21 Actual vs. 2021-22 Enrollment Projection by Grade



2021-22 Enrollment Change by Grade



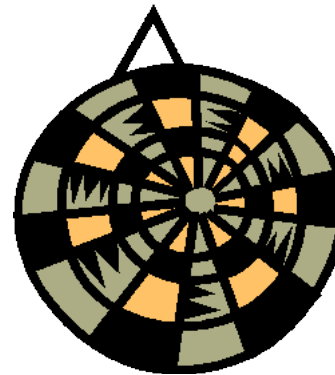
WADM Report

- The weighted average daily membership (WADM) projection shows a decline in student aid.
- Keep in mind the district's enrollment history also tends to decline from Oct. 1st to June 1st.

	2020-21		2021-22		2022-23		2023-24		2024-25	
	Enroll	WADM	Enroll	WADM	Enroll	WADM	Enroll	WADM	Enroll	WADM
HK	67	67	67	67	67	67	67	67	67	67
K	348	348	366	366	350	350	362	362	355	355
Gr. 1-3	1,153	1,153	1,137	1,137	1,110	1,110	1,067	1,067	1,060	1,060
Gr. 4-6	1,128	1,128	1,151	1,151	1,146	1,146	1,158	1,158	1,093	1,093
Gr. 7-8	881	1,057	868	1,042	804	965	722	866	759	911
Gr. 9-12	1,817	2,180	1,838	2,206	1,820	2,184	1,790	2,148	1,705	2,046
ECSE	93	93	101	101	94	94	99	99	96	96
MCPU		70		-		43		42		39
Total	5,487	6,096	5,528	6,070	5,391	5,959	5,265	5,809	5,135	5,667

Conclusion

- Uncertain economic and environmental factors make enrollment projections difficult.
- BHM's enrollment is projected to decline over the next three to five years.



5,360