



Expect  
**More.**

# Winter FastBridge Update

Presented to the School Board  
February 18, 2025

# What is FastBridge?

- Universal screener to measure strength of Tier 1 instruction and identify students for additional support
- earlyReading, earlyMath (K-1)
- aReading, aMath (Grades 2-12)



Expect  
**More.**

# Benchmarks

**Benchmarks** are test-specific cut scores that indicate the student's risk of performing below a future performance target (typically year end). These align with national normed percentiles:

- High risk: Below the 15th percentile
- Some risk: 15th - 39th percentile
- Low risk: 40th - 99th percentile OR
  - Low risk: 40th - 70th percentile
  - Advanced: 71st - 99th percentile

 High Risk  Some Risk  low risk  Advanced

These risk indicators can be used to identify a student's level of instructional need.

Note that low risk is not no risk – particularly at the low end of the range.



Expect  
**More.**

# How are schools using FastBridge?

- Identify gaps in Tier 1 Instruction
- Identify students for tiered intervention (elementary)
- Supporting work in CAT (Professional Learning Communities), BARR meetings
- Looking at student growth, progress monitoring



Expect  
**More.**



earlyReading

# What does earlyReading measure?

Foundational literacy skills: phonemic awareness, phonics, fluency

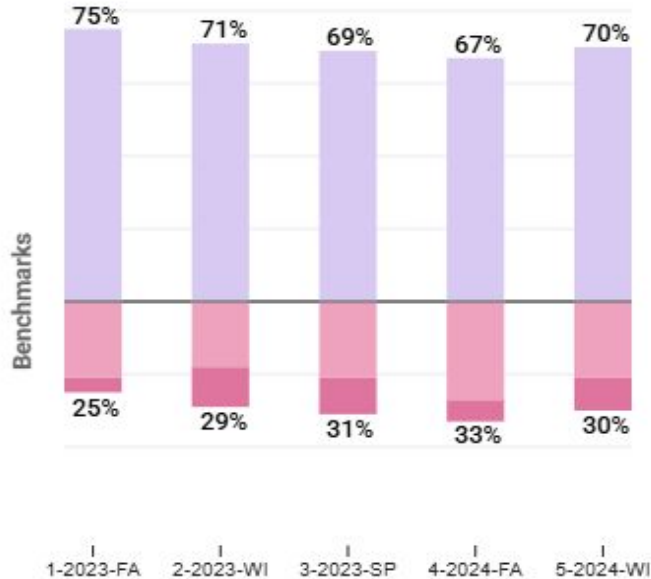
	Fall	Winter	Spring
Kindergarten	Concepts of Print Letter Names Letter Sounds Onset Sounds	Letter Sounds Onset Sounds Nonsense Words Word Segmenting	Letter Sounds Nonsense Words Sight Words Word Segmenting
1st Grade	Nonsense Words Sentence Reading Sight Words Word Segmenting	CBM (passages) Reading Nonsense Words Sight Words Word Segmenting	CBM (passages) Reading Nonsense Words Sight Words Word Segmenting



Expect  
**More.**

## KINDERGARTEN

-5% vs 2023-FALL



!!! High Risk    ! Some Risk    low risk    ☆ Advanced

## earlyReading - K

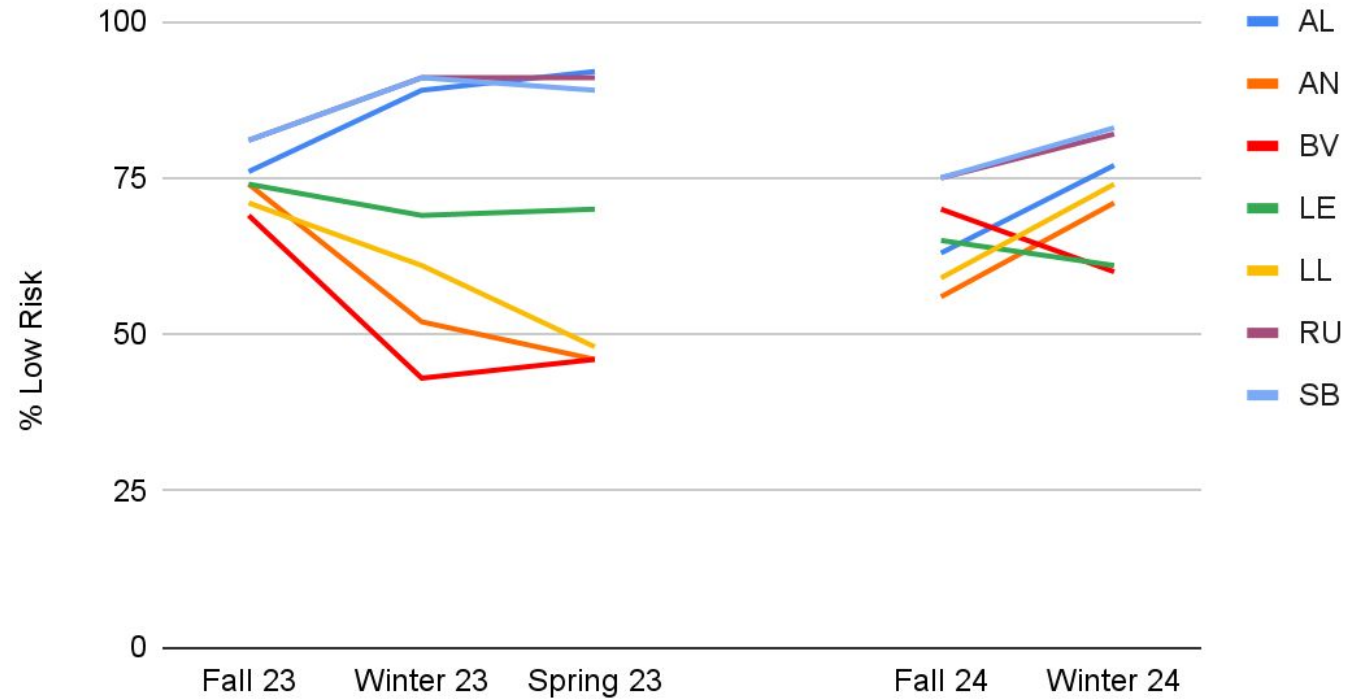
- Kindergarten class came in lower this fall -- went from 67% to 70% low risk
- First time in the last 3 years that kindergarten has improved as a district from fall to winter



Expect  
**More.**

# early Reading Kindergarten Highlights

## Low Risk % Over Time - earlyReading K

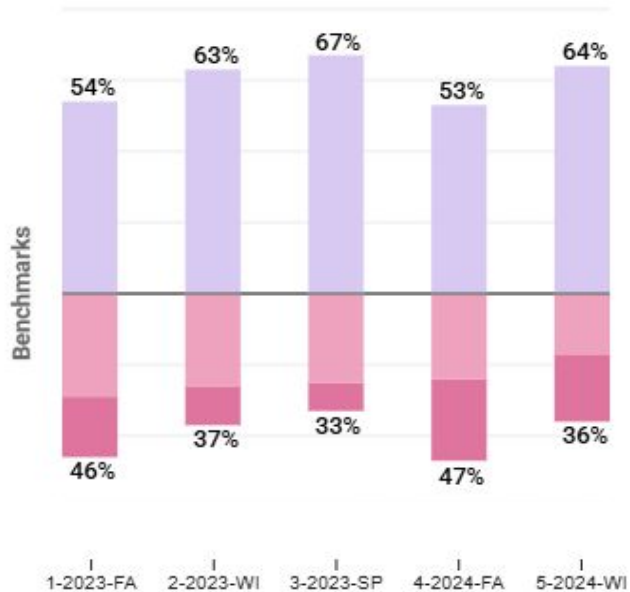


Expect  
**More.**



ONE

+10% vs 2023-FALL



!! High Risk ! Some Risk low risk ☆ Advanced

# earlyReading - Grade 1

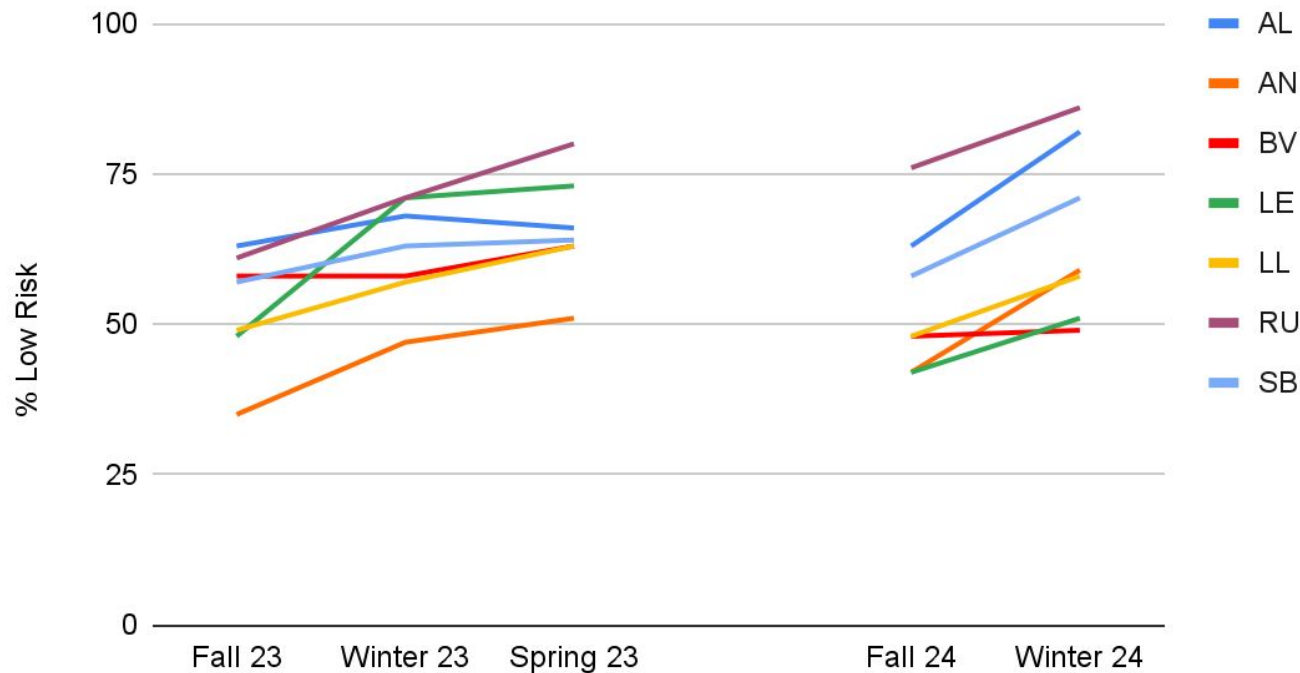
- Huge growth in first grade - 53% to 64% low risk
- Pattern of growth from Fall to Winter



Expect  
**More.**

# early Reading Grade 1 Highlights

## Low Risk % Over Time - earlyReading G1



Expect  
**More.**



aReading

# What does aReading measure?

- General, grade-level literacy skills
- Assesses broad reading ability including phonics, vocabulary, comprehension, and morphology

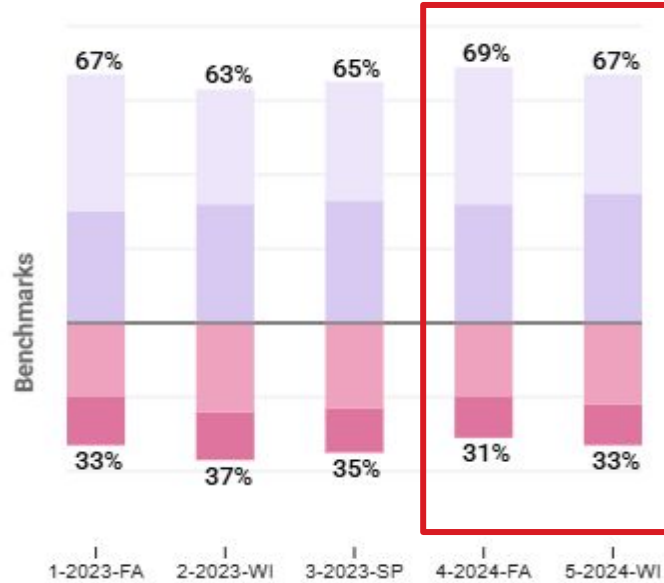
*30 minutes, computer-based adaptive assessment*



Expect  
**More.**

DISTRICT

0% vs 2023-FALL



!!! High Risk ! Some Risk low risk + Advanced

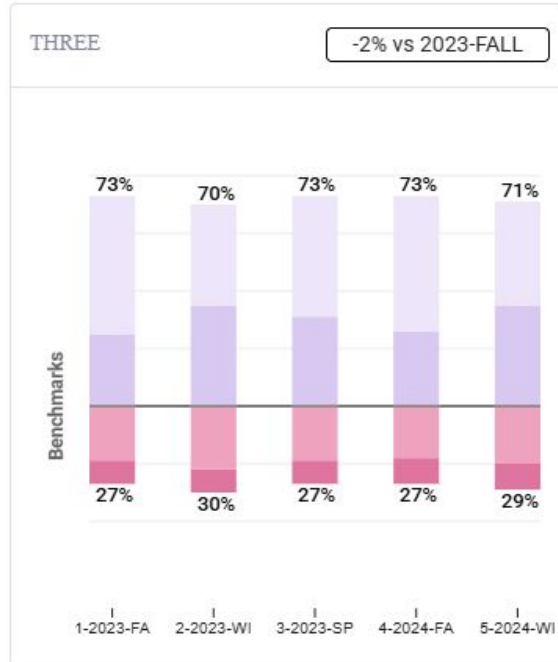
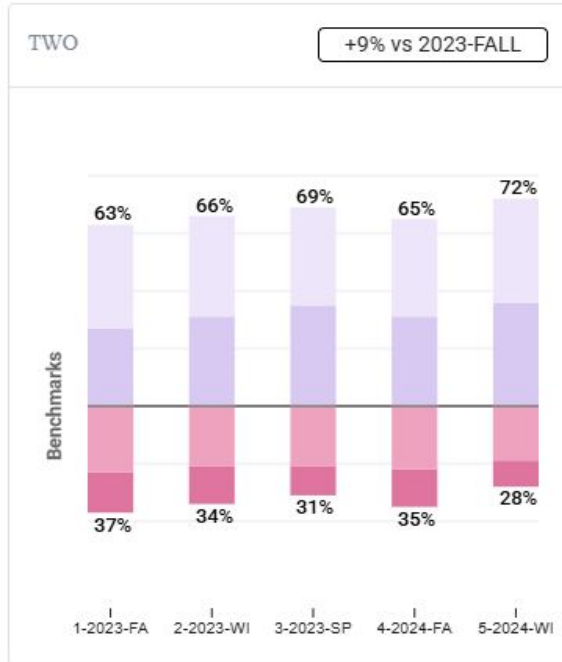
## aReading - District

- Slight dip from fall to winter
- Overall an improvement over last year
  - Winter to winter (most stable)
  - Note: This is first year secondary students have taken FastBridge



Expect  
**More.**

# aReading - District (Grades 2/3)



!!! High Risk    ! Some Risk    low risk    ☆ Advanced

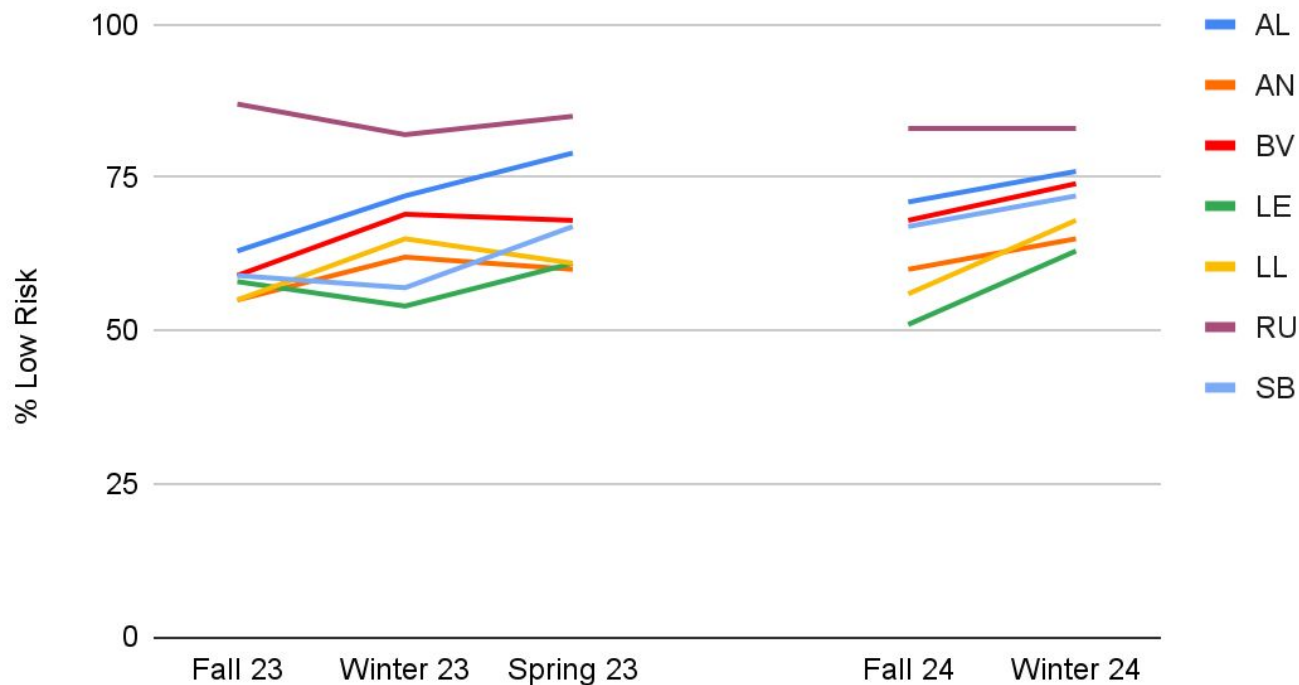
- Most growth in second grade from 65% to 72% low risk
  - Outperforming last year
- Third grade more stable at 71% low risk



Expect **More.**

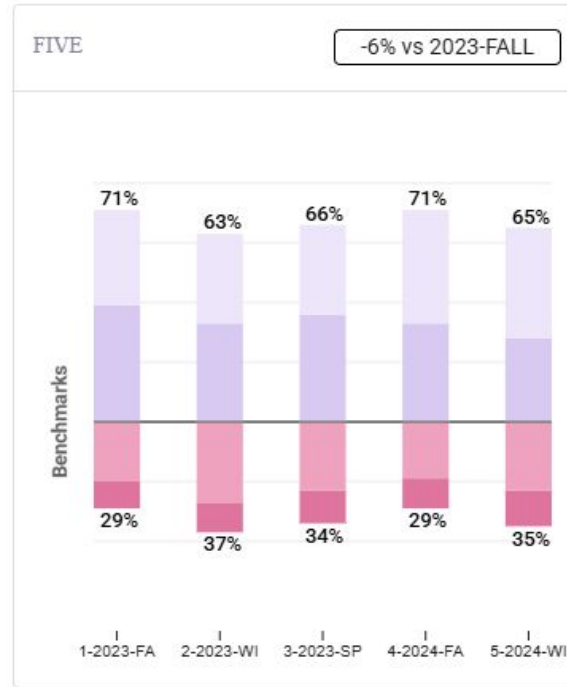
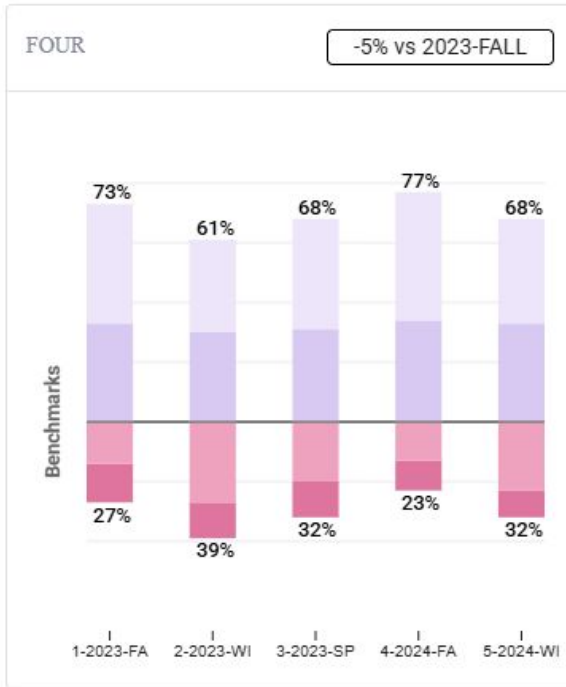
# aReading Grade 2 Highlights

## Low Risk % Over Time - aReading G2



Expect  
**More.**

# aReading - District (Grades 4/5)



!!! High Risk    ! Some Risk    low risk    ☆ Advanced

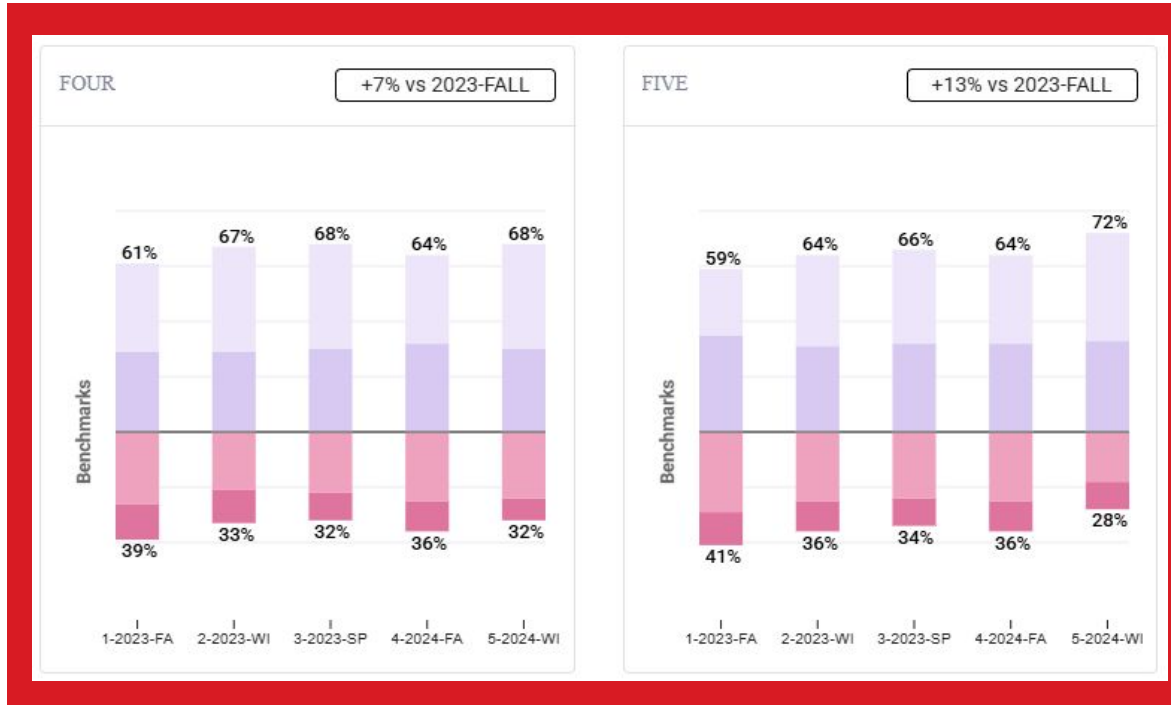
- Losses concentrated in upper elementary
  - Grade 4: 77% to 68%
  - Grade 5: 71% to 65%
- Modest winter to winter improvement



Expect  
**More.**



# CBMreading - District (Grades 4/5)



!!! High Risk ! Some Risk low risk ★ Advanced

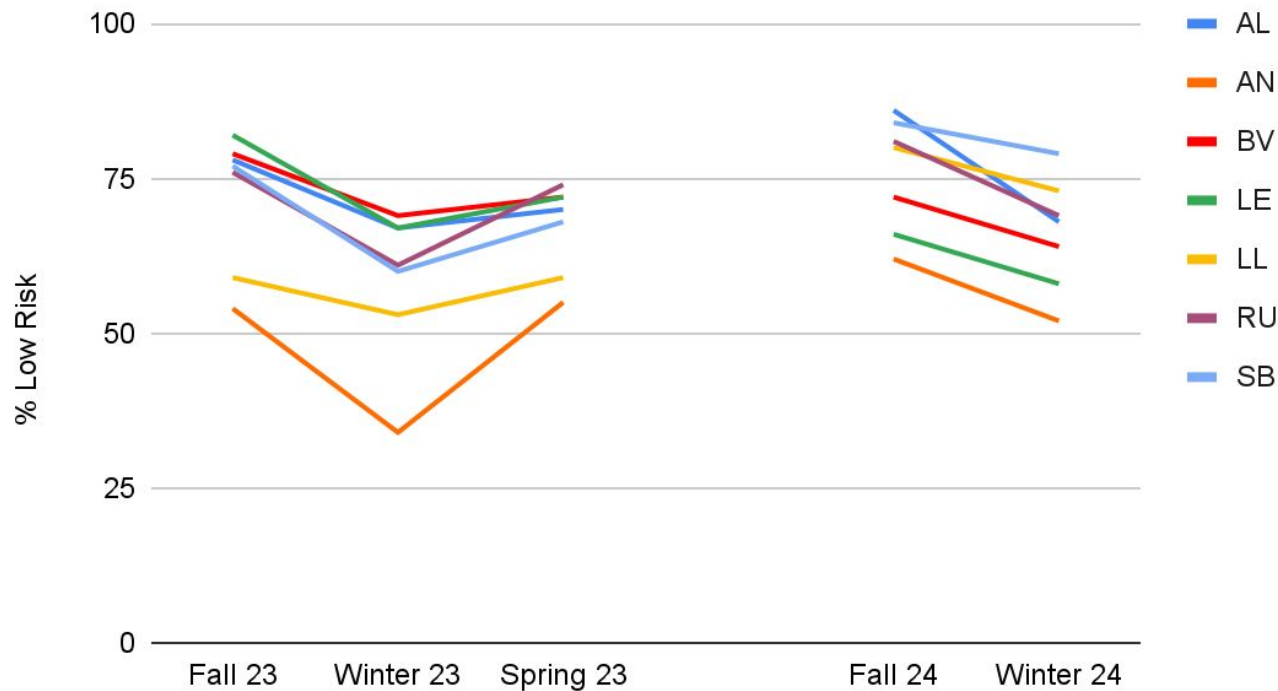
- CBMreading is a measure of oral reading fluency and accuracy
- Measure of foundational skills: Impacts the general reading ability and comprehension measured by aReading



Expect **More.**

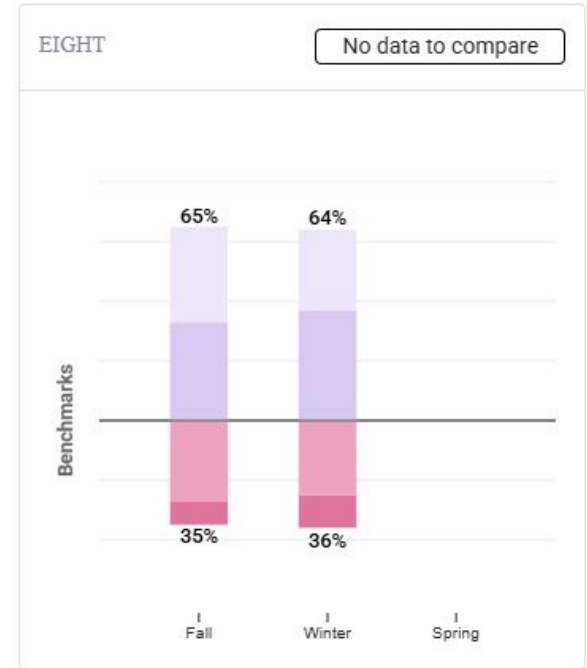
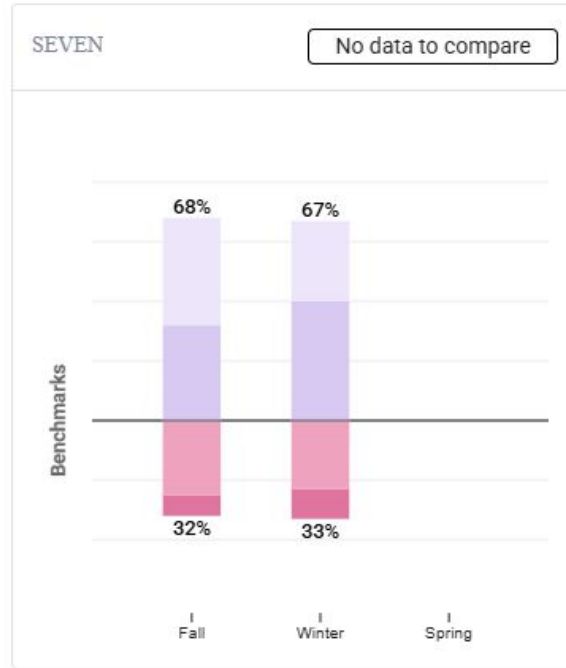
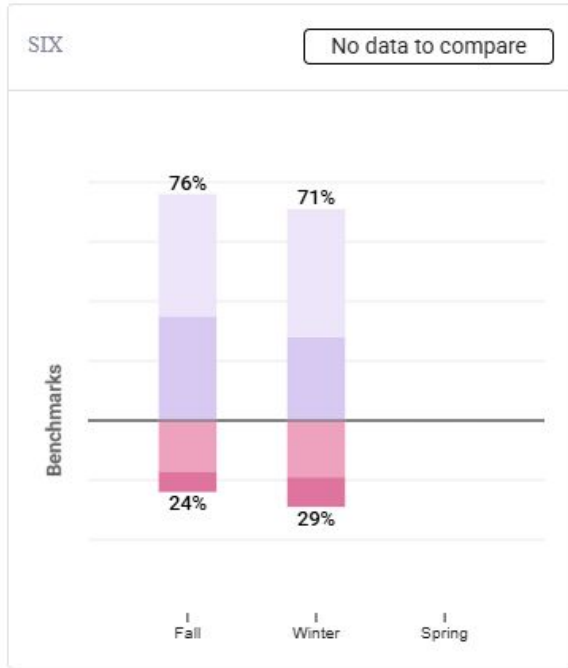
# aReading Grade 4 Highlights

## Low Risk % Over Time - aReading G4



Expect  
**More.**

# aReading - District (Grades 6/7/8)



!!! High Risk    ! Some Risk    low risk    ★ Advanced

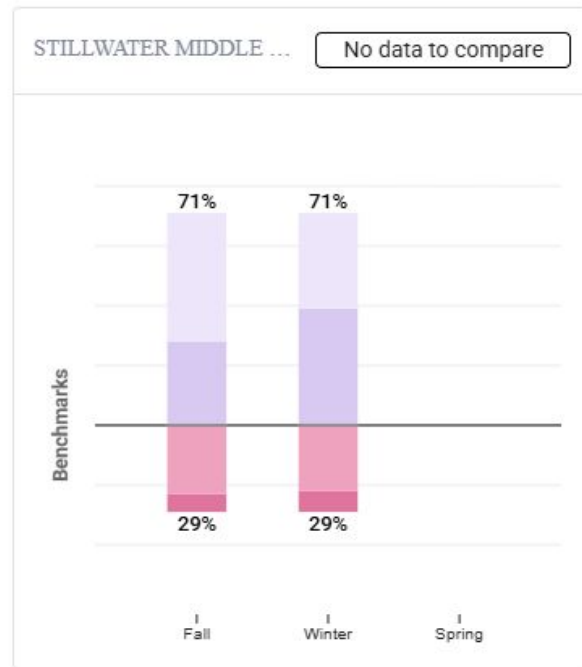
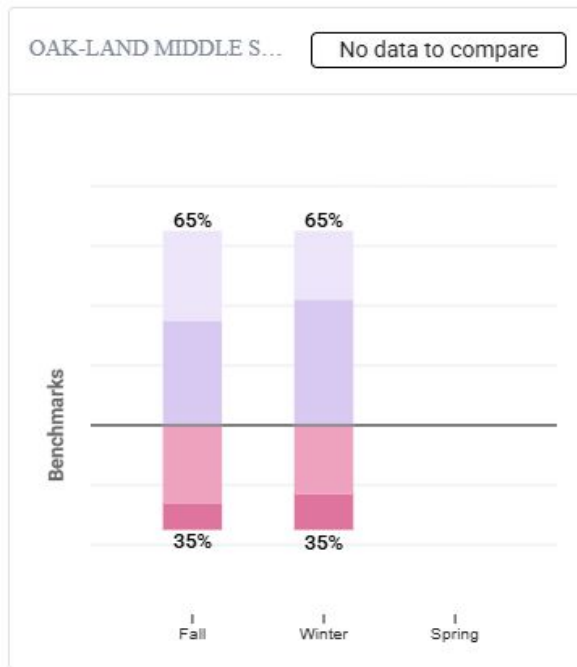


Expect  
**More.**

# aReading - Highlights (Grade 7)

Example used with  
PLC leads:

**What do you  
notice about  
this data?**

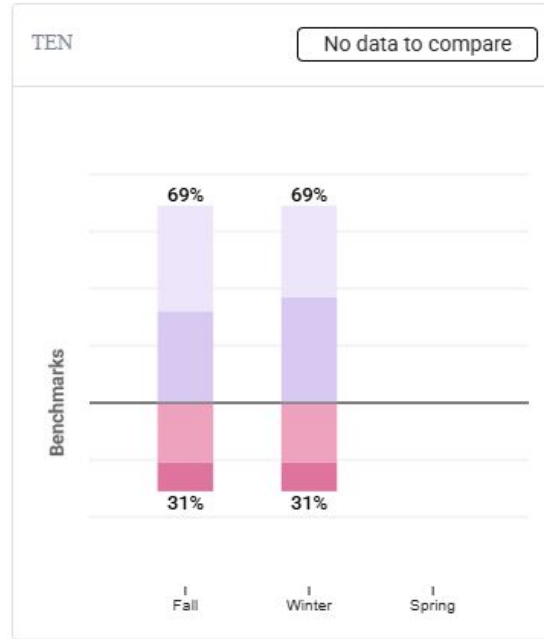
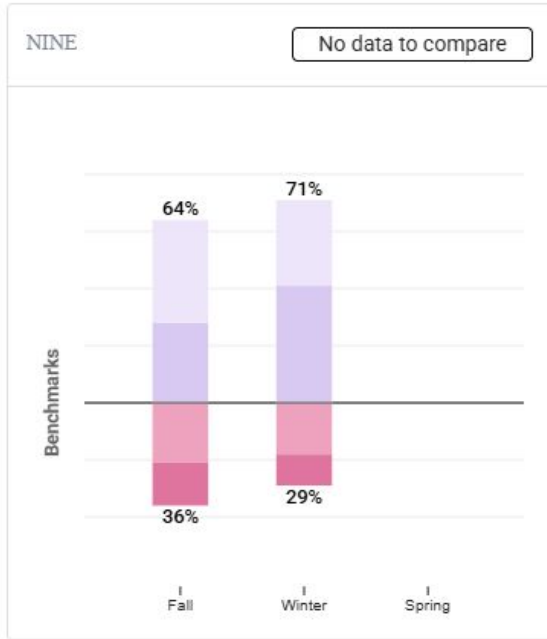


!!! High Risk    ! Some Risk    low risk    Advanced



Expect  
**More.**

# aReading - District (Grades 9/10)



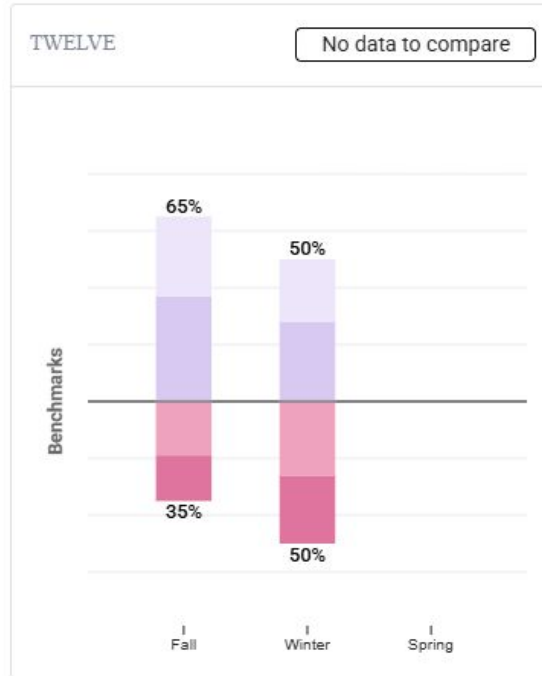
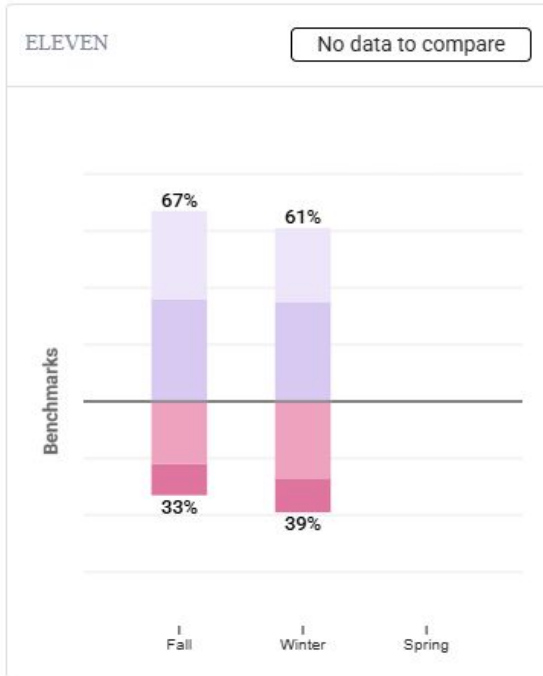
!!! High Risk    ! Some Risk    low risk    ☆ Advanced

- Signs of growth in grade 9
  - 64% to 71% low risk
- Stable at grade 10 (69%)
- Still working on implementation to make sure all students are screened



Expect  
**More.**

# aReading - District (Grades 11/12)



- Dip in grade 11 from 67% to 61% low risk
- Drop in grade 12 from 65% to 50%
  - Only half of students screened
- Still working on implementation to make sure all students are screened

!!! High Risk    ! Some Risk    low risk    ☆ Advanced



Expect  
**More.**

# FastBridge Reading Takeaways:

- Ability to identify areas of need and areas of growth
  - Down to school, grade, teacher level
- Strength in earlyReading as instructional practices change
- Need for aligned literacy curriculum in grades 4 and 5
- Pilot data in secondary shows areas of strength and need



Expect  
**More.**



earlyMath



# What does earlyMath measure?

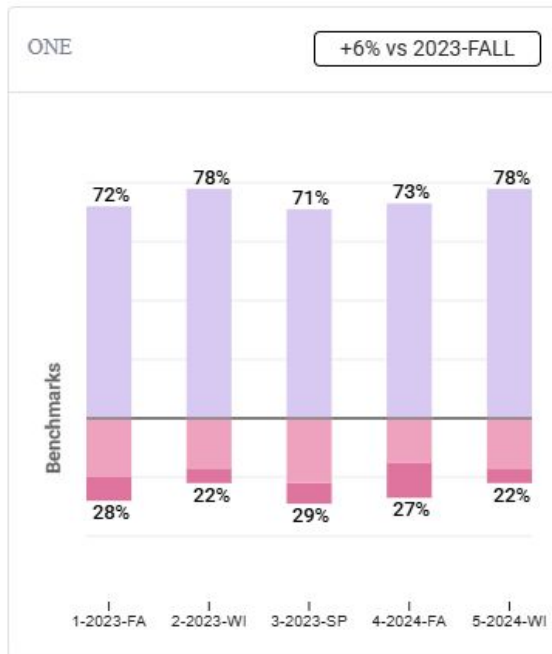
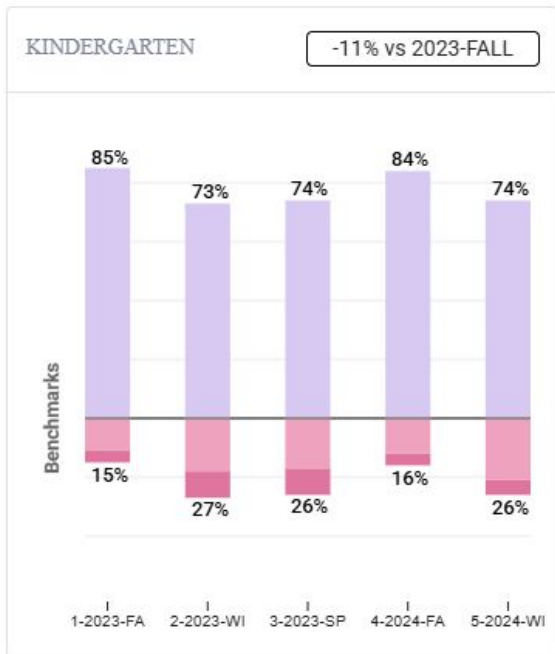
Foundational numeracy skills in the domains of number, relations, and operations

	Fall	Winter	Spring
Kindergarten	Matching Quantity Number Sequence Numeral Identification	Decomposing Numbers Number Sequence Numeral Identification	Decomposing Numbers Number Sequence Numeral Identification
1st Grade	Decomposing Numbers Number Sequence Numeral Identification	Decomposing Numbers Number Sequence Place Value	Decomposing Numbers Place Value Story Problems



Expect  
**More.**

# earlyMath - District



!! High Risk   ! Some Risk   low risk   ★ Advanced

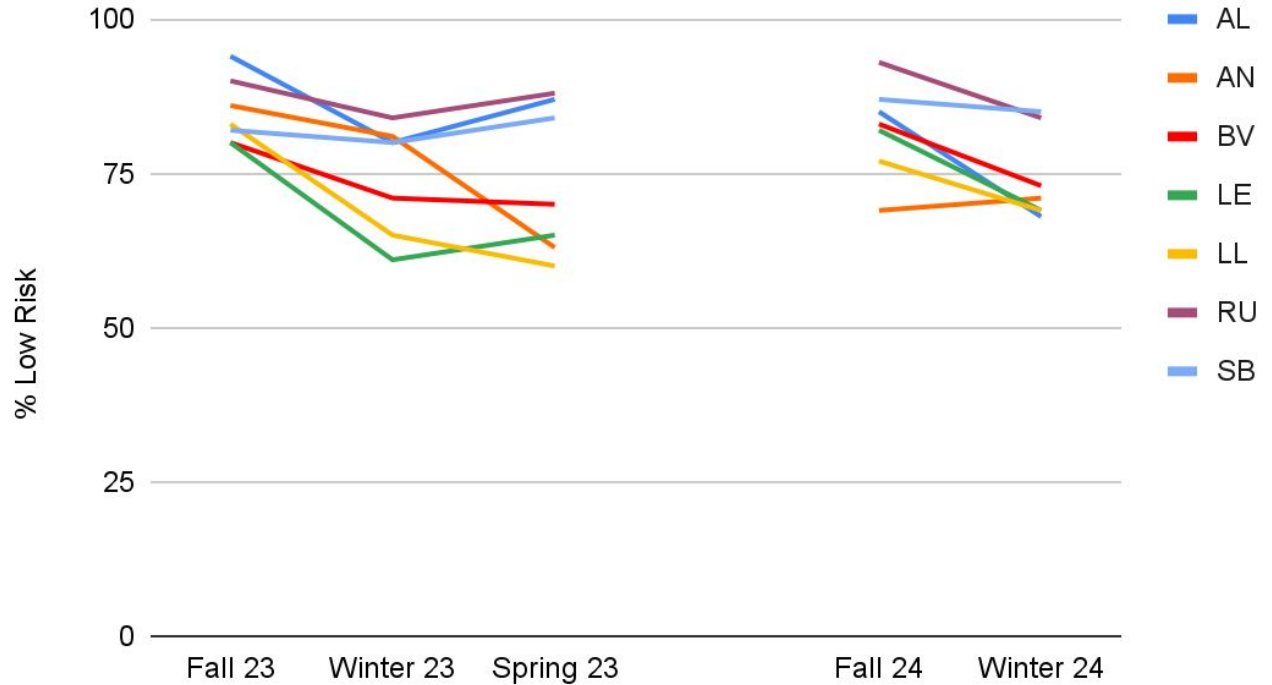
- Drop in Kindergarten from 84% to 74% low risk
  - Similar to last year
  - Consistent across schools
- Modest growth in first grade from 73% to 78% low risk



Expect  
**More.**

# earlyMath Kindergarten Highlights

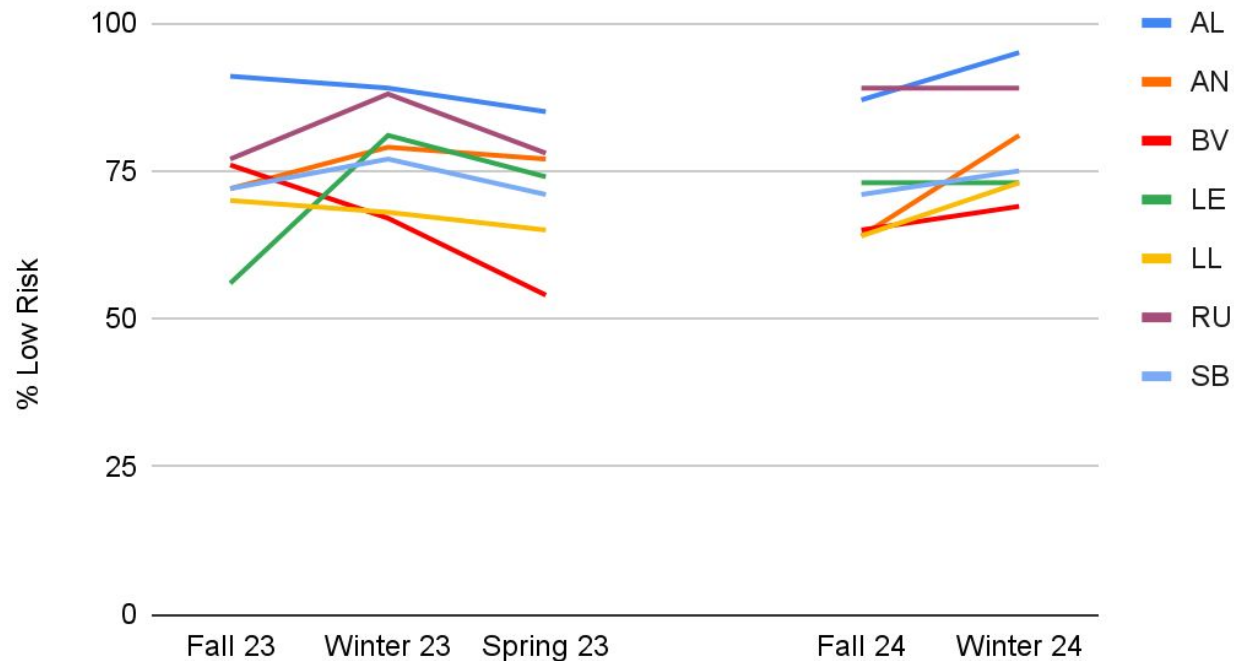
## Low Risk % Over Time - earlyMath K



Expect  
**More.**

# earlyMath Grade 1 Highlights

## Low Risk % Over Time - earlyMath G1



Expect  
**More.**



aMath

# What does aMath measure?

- General, grade-level math skills
- Assesses broad math abilities and predicts overall achievement in operations and algebraic thinking; number and operations in base ten; number and operations with fractions; measurement and data; and geometry

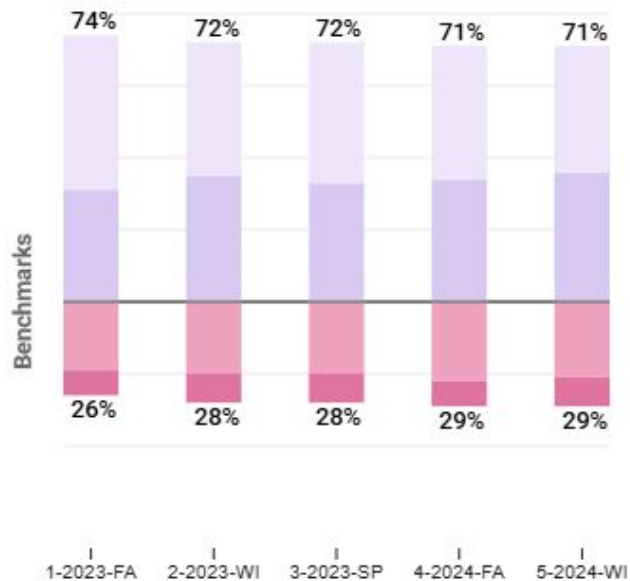
*30 minutes, computer-based adaptive assessment*



Expect  
**More.**

DISTRICT

-3% vs 2023-FALL



!!! High Risk   ! Some Risk   low risk   ★ Advanced

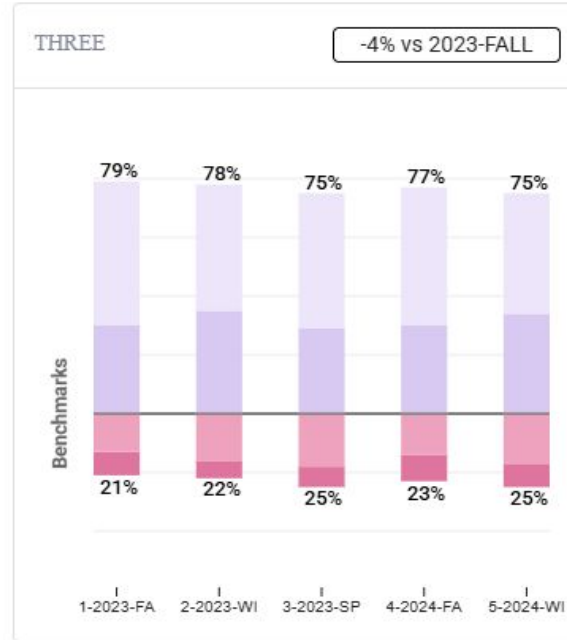
## aMath - District

- Static from fall to winter
- Overall static from last year
  - Fall to fall shows a dip
  - Winter to winter (most stable)
  - Note: added secondary



Expect  
**More.**

# aMath - District (Grades 2/3)



!! High Risk   ! Some Risk   low risk   ☆ Advanced

- Most growth in second grade from 72% to 76% low risk
  - Outperforming last year
- Third grade more stable at 75% low risk

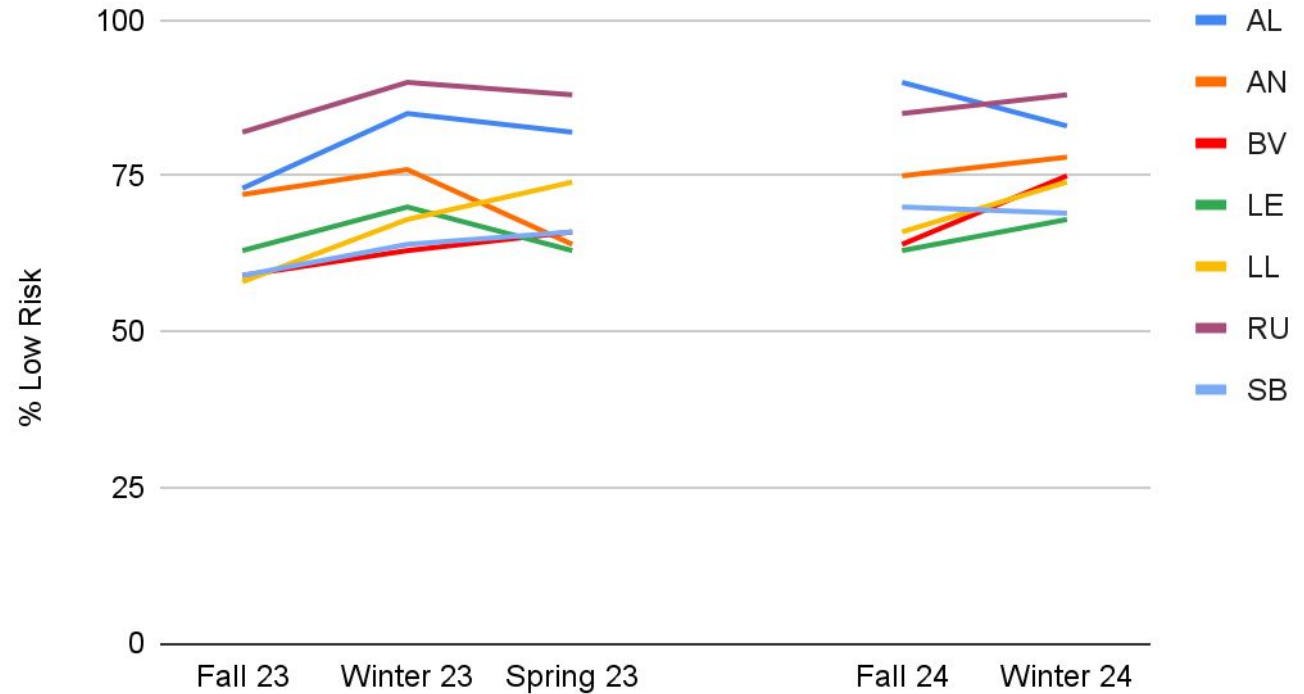


Expect  
**More.**



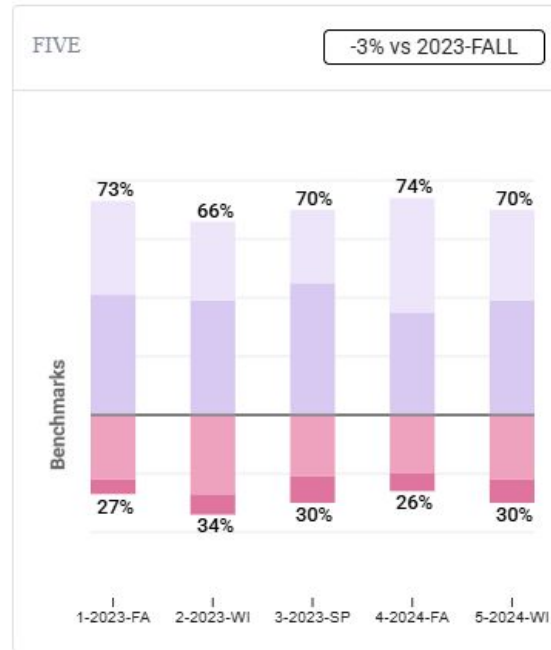
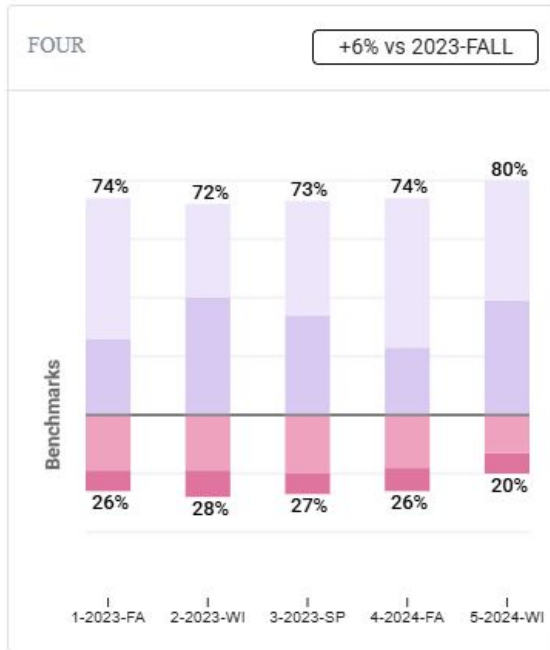
# aMath Grade 2 Highlights

## Low Risk % Over Time - aMath G2



Expect  
**More.**

# aMath - District (Grades 4/5)



!! High Risk ! Some Risk low risk + Advanced

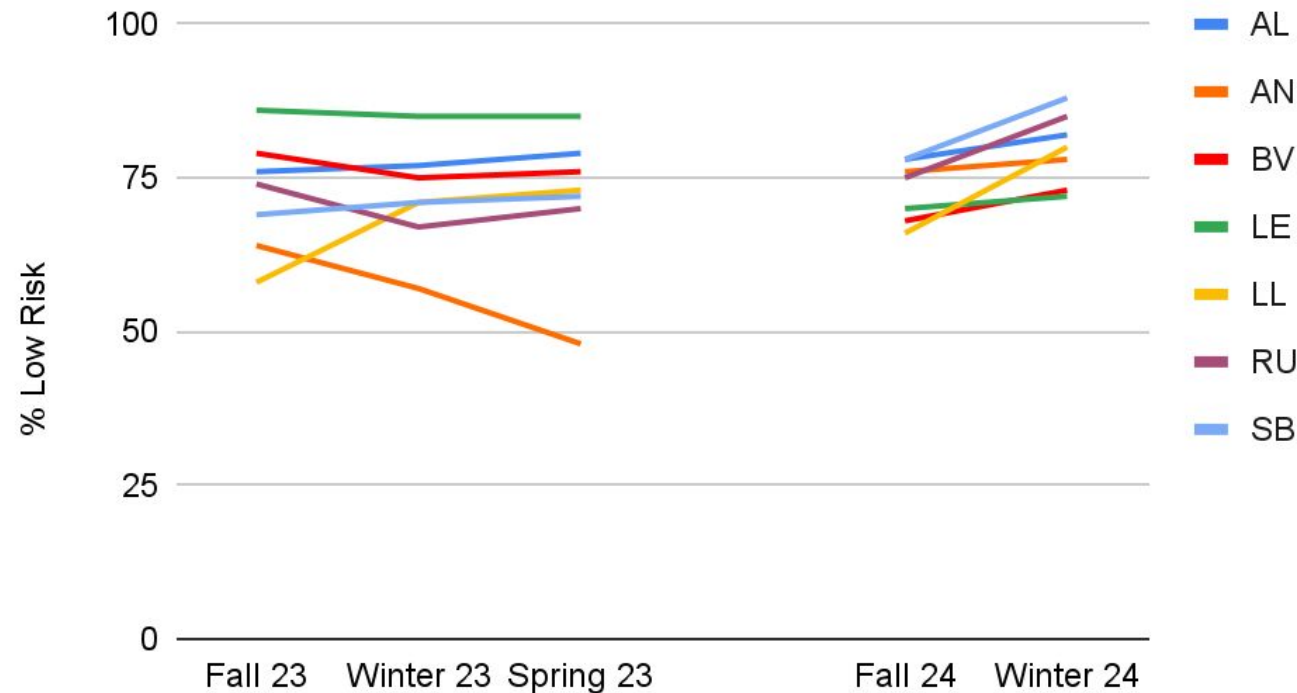
- Growth in grade 4 from 74% to 80% low risk
  - Marked difference from last year
- Drop in grade 5 from fall to winter (74% to 70%)
  - Winter to winter growth



Expect  
**More.**

# aMath Grade 4 Highlights

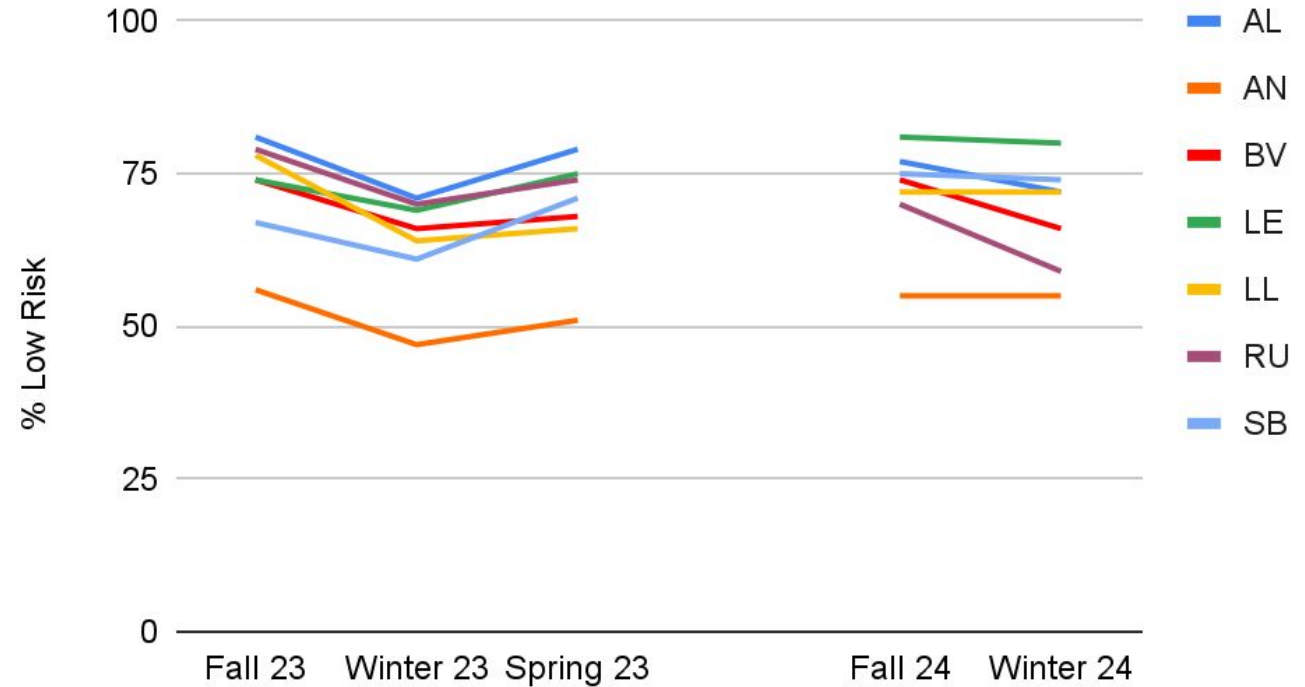
## Low Risk % Over Time - aMath G4



Expect  
**More.**

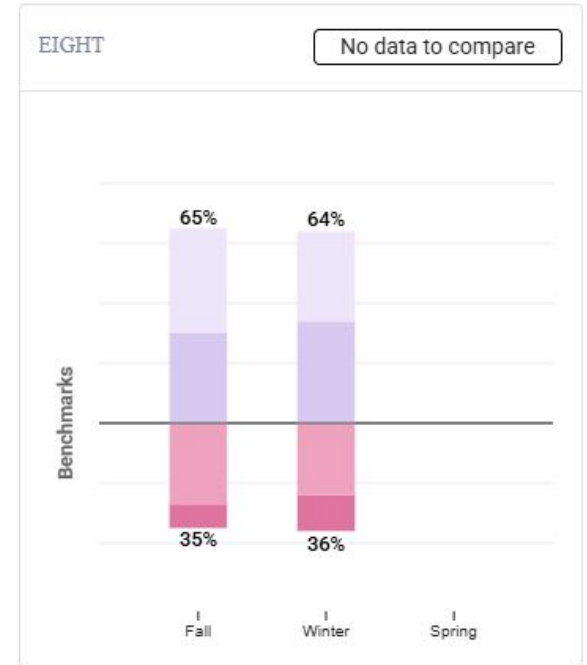
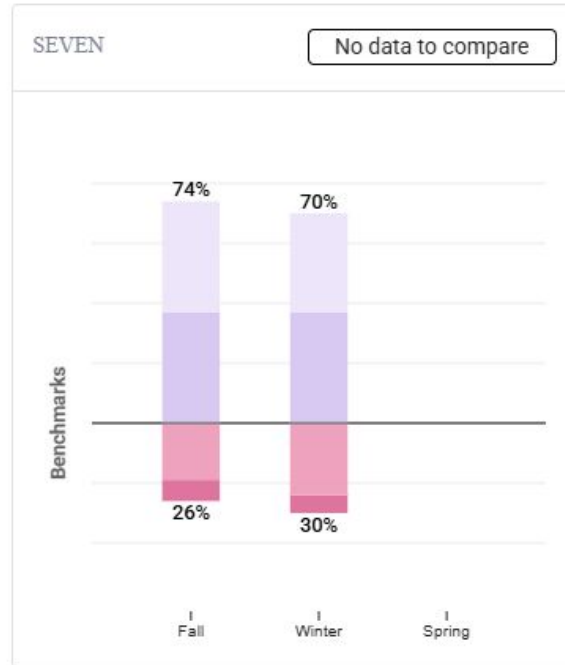
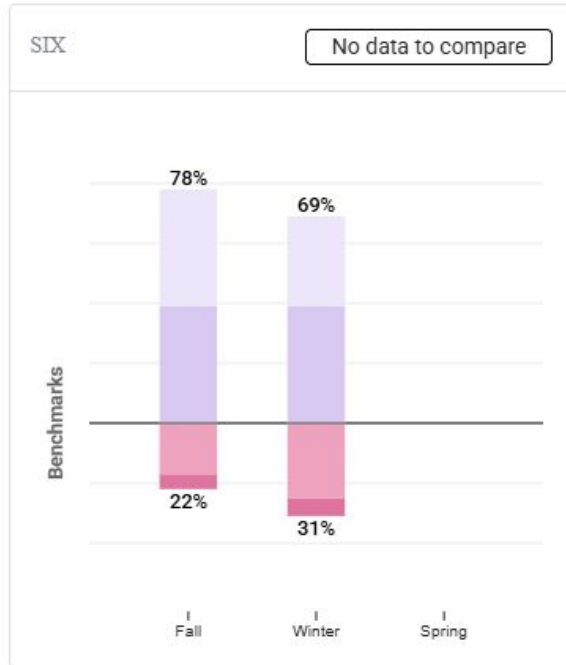
# aMath Grade 5 Highlights

## Low Risk % Over Time - aMath G5



Expect  
**More.**

# aMath - District (Grades 6/7/8)

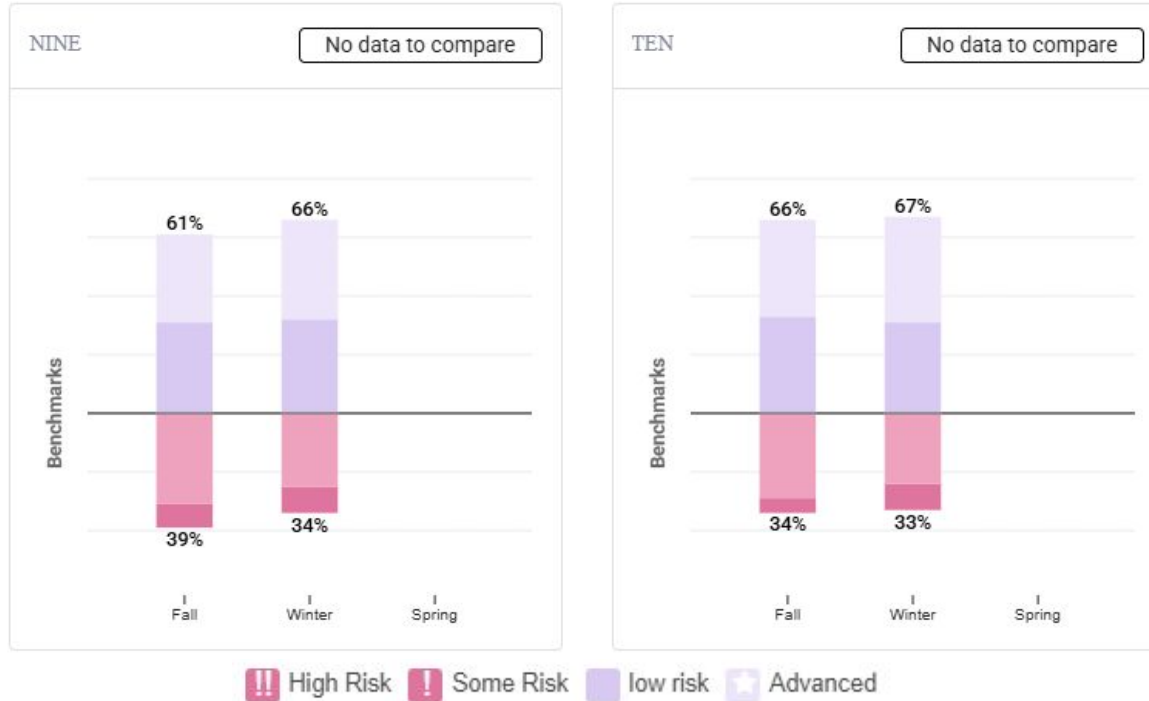


!! High Risk ! Some Risk low risk Advanced



Expect  
**More.**

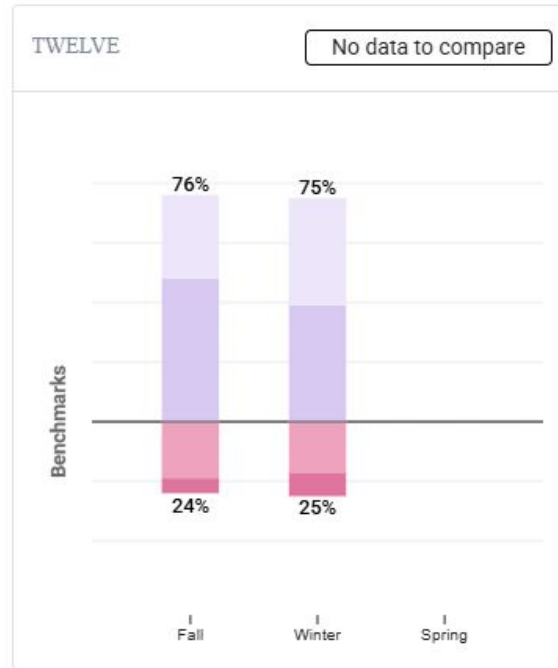
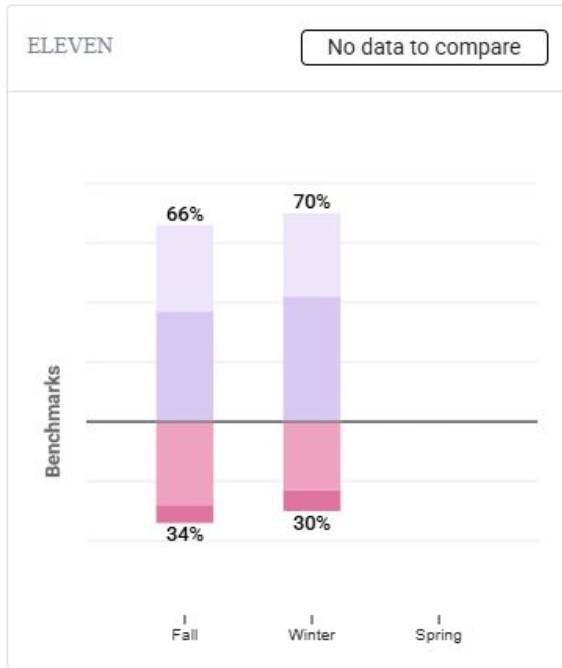
# aMath - District (Grades 9/10)



- Signs of growth in grade 9
  - 61% to 66% low risk
- Stable at grade 10 (67% low risk)
- Still working on implementation to make sure all students are screened



# aMath - District (Grades 11/12)



!! High Risk ! Some Risk low risk ★ Advanced

- Signs of growth in grade 11 from 66% to 70% low risk
- Stable in 12th grade (75% low risk)
- Still working on implementation to make sure all students are screened



Expect  
**More.**

# Math FastBridge Takeaways

- Ability to identify areas of need and areas of growth
  - Down to school, grade, teacher level
- Need to strengthen kindergarten math
- Continued push for rigor in math in grades 4 and 5
- Pilot data in secondary shows areas of strength and need



Expect  
**More.**





# Questions



# Data Appendix

early  
Reading  
Kindergarten  
Highlights

	Fall 23	Winter 23	Spring 23	Fall 24	Winter 24
AL	76	89	92	63	77
AN	74	52	46	56	71
BV	69	43	46	70	60
LE	74	69	70	65	61
LL	71	61	48	59	74
RU	81	91	91	75	82
SB	81	91	89	75	83



Expect  
**More.**

# early Reading Grade 1 Highlights

	Fall 23	Winter 23	Spring 23	Fall 24	Winter 24
AL	63	68	66	63	82
AN	35	47	51	42	59
BV	58	58	63	48	49
LE	48	71	73	42	51
LL	49	57	63	48	58
RU	61	71	80	76	86
SB	57	63	64	58	71



Expect  
**More.**

# aReading Grade 2 Highlights

	Fall 23	Winter 23	Spring 23	Fall 24	Winter 24
AL	63	72	79	71	76
AN	55	62	60	60	65
BV	59	69	68	68	74
LE	58	54	61	51	63
LL	55	65	61	56	68
RU	87	82	85	83	83
SB	59	57	67	67	72



Expect  
**More.**

# aReading Grade 4 Highlights

	Fall 23	Winter 23	Spring 23	Fall 24	Winter 24
<b>AL</b>	78	67	70	86	68
<b>AN</b>	54	34	55	62	52
<b>BV</b>	79	69	72	72	64
<b>LE</b>	82	67	72	66	58
<b>LL</b>	59	53	59	80	73
<b>RU</b>	76	61	74	81	69
<b>SB</b>	77	60	68	84	79



Expect  
**More.**

# earlyMath Kindergarten Highlights

	Fall 23	Winter 23	Spring 23	Fall 24	Winter 24
AL	94	80	87	85	68
AN	86	81	63	69	71
BV	80	71	70	83	73
LE	80	61	65	82	69
LL	83	65	60	77	69
RU	90	84	88	93	84
SB	82	80	84	87	85



Expect  
**More.**

# earlyMath Grade 1 Highlights

	Fall 23	Winter 23	Spring 23	Fall 24	Winter 24
AL	91	89	85	87	95
AN	72	79	77	64	81
BV	76	67	54	65	69
LE	56	81	74	73	73
LL	70	68	65	64	73
RU	77	88	78	89	89
SB	72	77	71	71	75



Expect  
**More.**



# aMath Grade 2 Highlights

	Fall 23	Winter 23	Spring 23	Fall 24	Winter 24
AL	73	85	82	90	83
AN	72	76	64	75	78
BV	59	63	66	64	75
LE	63	70	63	63	68
LL	58	68	74	66	74
RU	82	90	88	85	88
SB	59	64	66	70	69



Expect  
**More.**

# aMath Grade 4 Highlights

	Fall 23	Winter 23	Spring 23	Fall 24	Winter 24
<b>AL</b>	76	77	79	78	82
<b>AN</b>	64	57	48	76	78
<b>BV</b>	79	75	76	68	73
<b>LE</b>	86	85	85	70	72
<b>LL</b>	58	71	73	66	80
<b>RU</b>	74	67	70	75	85
<b>SB</b>	69	71	72	78	88



Expect  
**More.**

# aMath Grade 5 Highlights

	Fall 23	Winter 23	Spring 23	Fall 24	Winter 24
AL	81	71	79	77	72
AN	56	47	51	55	55
BV	74	66	68	74	66
LE	74	69	75	81	80
LL	78	64	66	72	72
RU	79	70	74	70	59
SB	67	61	71	75	74



Expect  
**More.**