

- Red Wing Public Schools
ISD# 256 Economic Profile

Peer Summary

What can we learn about state-wide revenues for schools during the Great Recession and the recovery that might inform us in the current economic uncertainty?

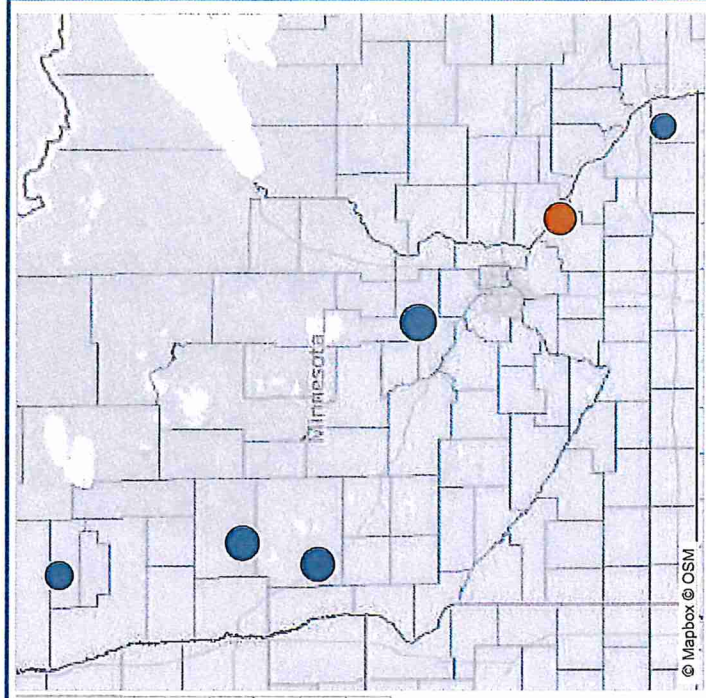
How were the district's revenues impacted during the Great Recession?

What impact did the revenue pattern have on our General Fund fiscal condition?

Red Wing Public School District Economic Profile

Financial benchmarking allows districts to analyze their condition, comparing their data to defined metrics to inform decision makers.

| District | County | District Enrollment | ELL Status Percent of Enrollment | Low Income Percent of Enrollment |
|-------------------------------------|------------|---------------------|----------------------------------|----------------------------------|
| Detroit Lakes Public School Dist. | BECKER | 3,032 | 0.13% | 36.11% |
| Fergus Falls Public School District | OTTER TAIL | 2,957 | 1.45% | 34.09% |
| Houston Public School District | HOUSTON | 1,694 | 0.65% | 36.42% |
| Princeton Public School District | MILLE LACS | 3,327 | 0.60% | 29.01% |
| Red Wing Public School District | GOODHUE | 2,681 | 1.98% | 32.86% |
| Thief River Falls School District | PENNINGTON | 2,030 | 0.74% | 35.07% |



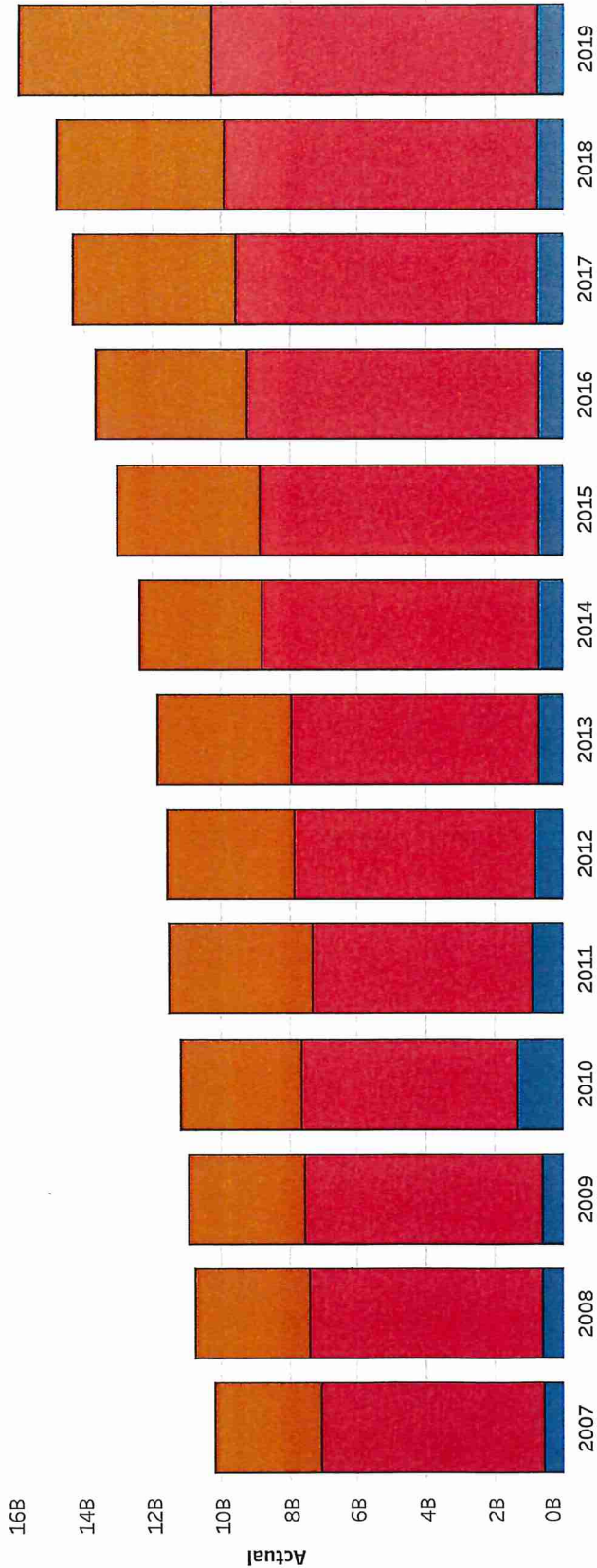
Enrollment Data presented is from 2020.



| | | | |
|--------------|---|---|--|
| Peer Summary | What can we learn about state-wide revenues for schools during the Great Recession and the recovery that might inform us in the current economic uncertainty? | How were the district's revenues impacted during the Great Recession? | What impact did the revenue pattern have on our General Fund fiscal condition? |
|--------------|---|---|--|

Red Wing Public School District Economic Profile

The bar graph below is from the All Funds in the entire state.



Source
■ Local Sources
■ State Sources

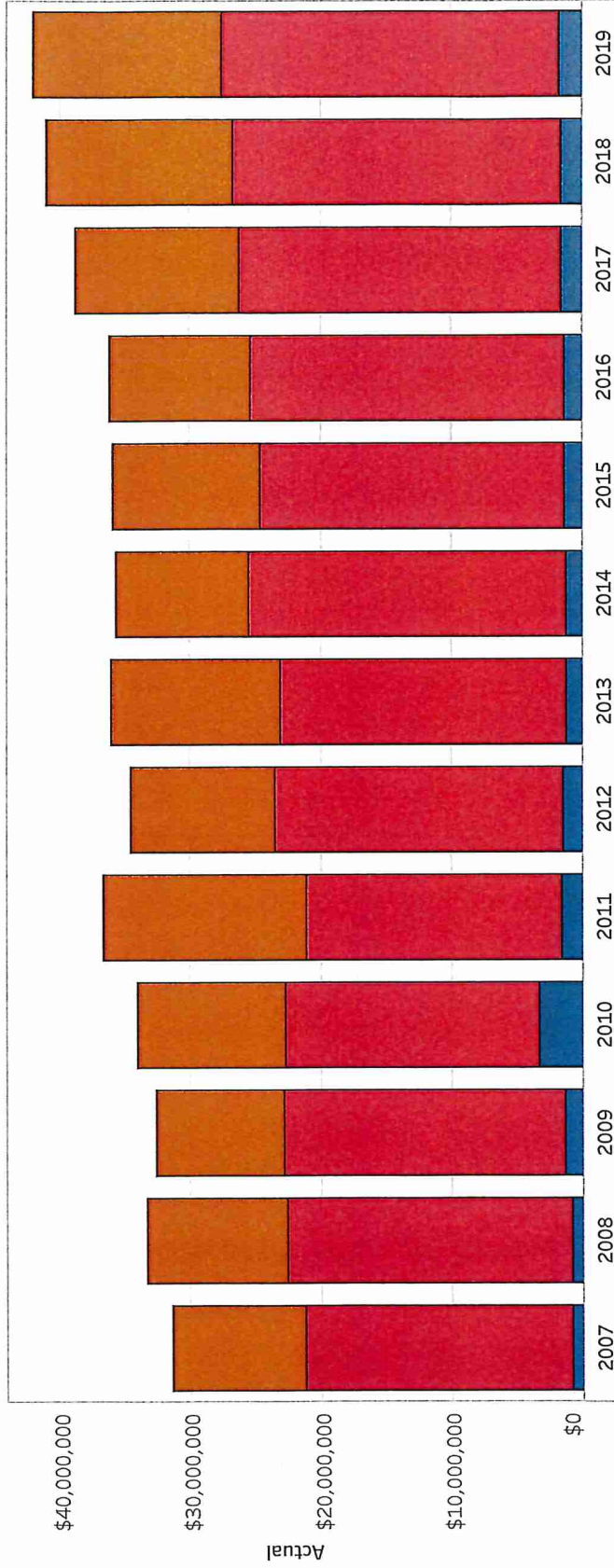
■ Federal Sources



| | |
|---|--|
| Peer Summary | How does our financial position compare to peers? |
| What can we learn about state-wide revenues for schools during the Great Recession and the recovery that might inform us in the current economic uncertainty? | What impact did the revenue pattern have on our General Fund fiscal condition? |
| How were the district's revenues impacted during the Great Recession? | |

Red Wing Public School District Economic Profile

The bar graph below is from the All Funds for Red Wing Public School District.



Source
■ Federal Sources
■ Local Sources
■ State Sources

What can we learn about state-wide revenues for schools during the Great Recession and the recovery ..

How were the district's revenues impacted during the Great Recession?

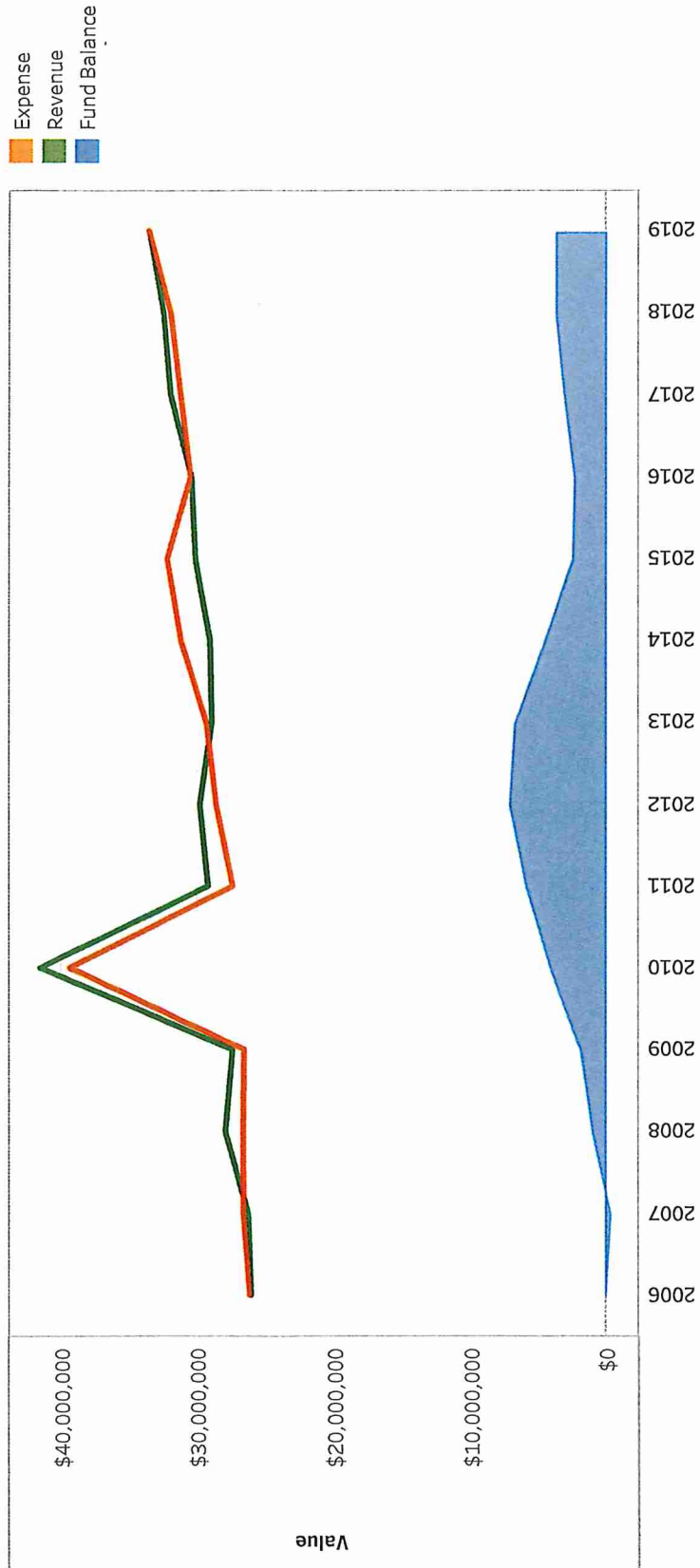
What impact did the revenue pattern have on our General Fund fiscal condition?

How does our financial position compare to peers?

What opportunities do we have for reducing expenditures? Have our teaching staff FTEs been in line wit..

Red Wing Public School District Economic Profile

The graph below shows the change in General Fund.





How were the district's revenues impacted during the Great Recession?

What impact did the revenue pattern have on our General Fund fiscal condition?

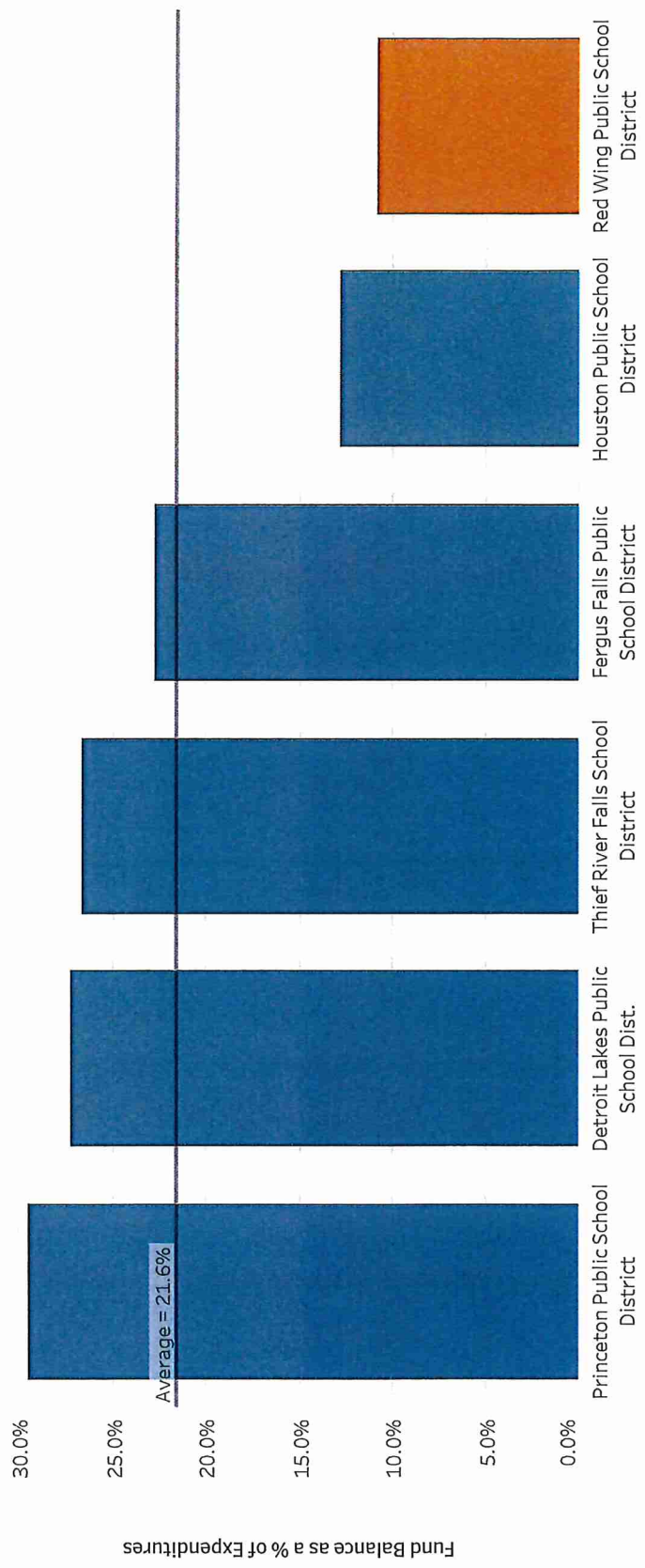
How does our financial position compare to peers?

What opportunities do we have for reducing expenditures? Have our teaching staff FTEs been in line with our enrollment?

How do our teacher staffing ratios compare to peers?

Red Wing Public School District Economic Profile

The graph below shows fund balance as a % of expenditures for General Fund for 2019.

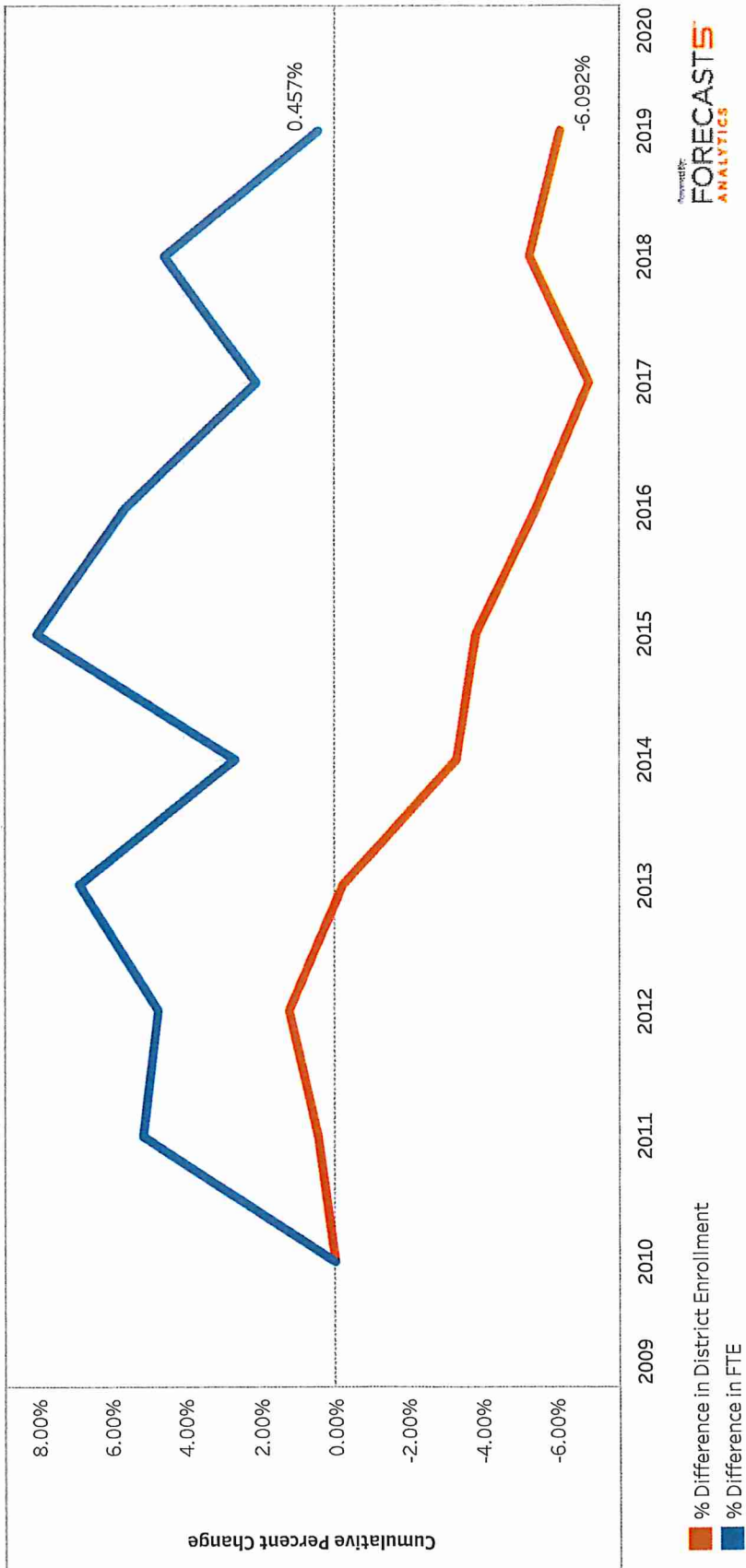




| | | | | |
|--|---|---|--|--|
| What impact did the revenue pattern have on our General Fund fiscal condition? | How does our financial position compare to peers? | What opportunities do we have for reducing expenditures? Have our teaching staff FTEs been in line with our enrollment? | How do our teacher staffing ratios compare to peers? | Which expense items have grown the most? |
|--|---|---|--|--|

Red Wing Public School District Economic Profile

The graph below show the cumulative percent changes in Teacher FTE and Enrollment from 2010 to 2019.





How does our financial position compare to peers?

What opportunities do we have for reducing expenditures? Have our teaching staff FTEs been in line with our enrollment?

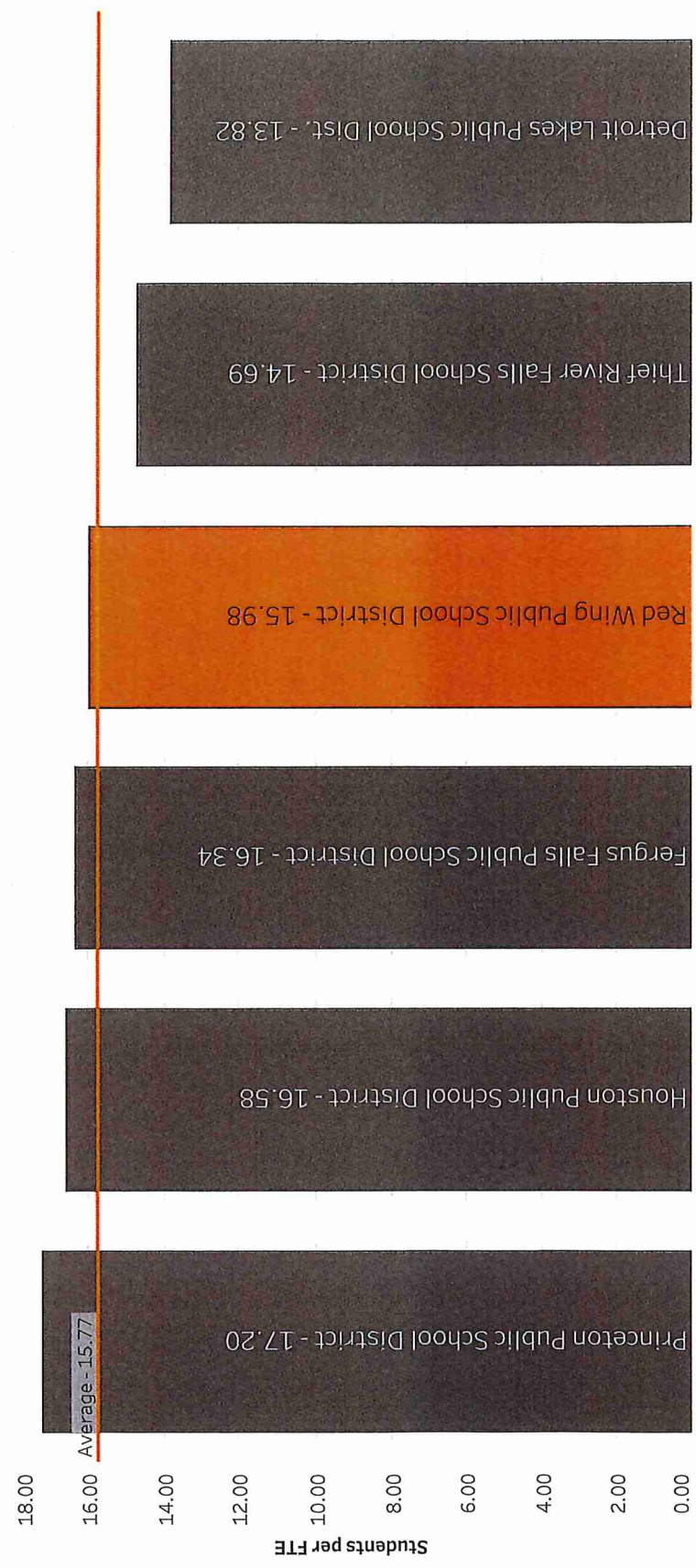
How do our teacher staffing ratios compare to peers?

Which expense items have grown the most?

Which areas do we spend more than our peers?

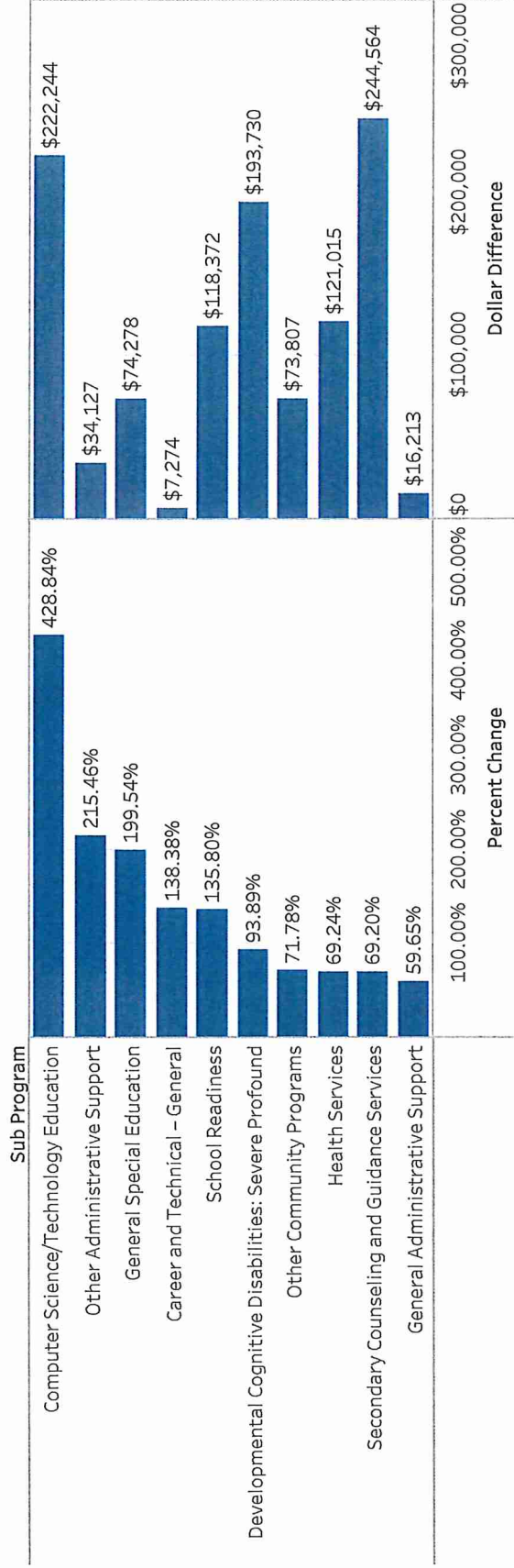
Red Wing Public School District Economic Profile

2019 - Student per Teacher FTE Comparison



Red Wing Public School District Economic Profile

The ten sub programs below had the highest percentage increase in spending from 2016 to 2019 in the Operating Fund. The right-hand column shows the dollar amount of the increase over that same time period. Line-items without an amount for both 2016 and 2019 are not displayed.





How do our teacher staffing ratios compare to peers?

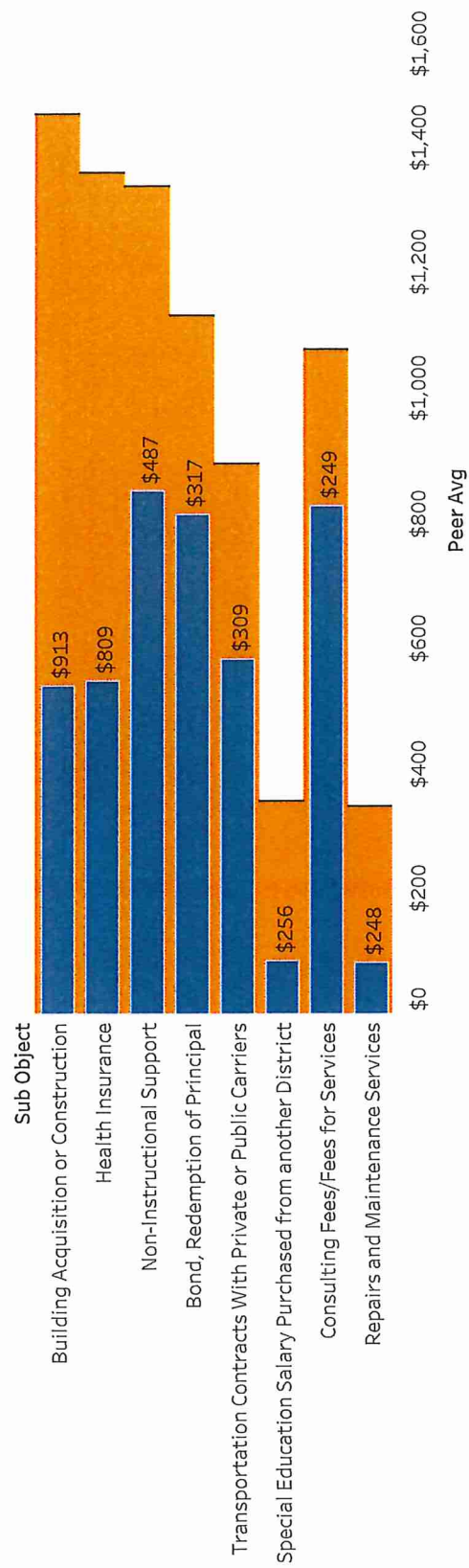
Which expense items have grown the most?

Which areas do we spend more than our peers?

Data Notes

Red Wing Public School District Economic Profile

The graph below shows the 8 sub objects where **your district** is spending more per pupil than your peers in 2019.





| | | | |
|--|--|--|------------|
| How do our teacher staffing ratios compare to peers? | Which expense items have grown the most? | Which areas do we spend more than our peers? | Data Notes |
|--|--|--|------------|

Data Notes

Salary and Staffing data is obtained from MDE: <https://public.education.mn.gov/MDEAnalytics/PELSB.jsp?TOPICID=437>

Enrollment data consists of fall counts including demographic breakdowns as well as open enrollment mobility and are obtained from the Minnesota Department of Education (MDE): <https://public.education.mn.gov/MDEAnalytics/Data.jsp>

Financial data consists of Uniform Financial Accounting and Reporting Standards (UFARS) actual results obtained from MDE via a records request

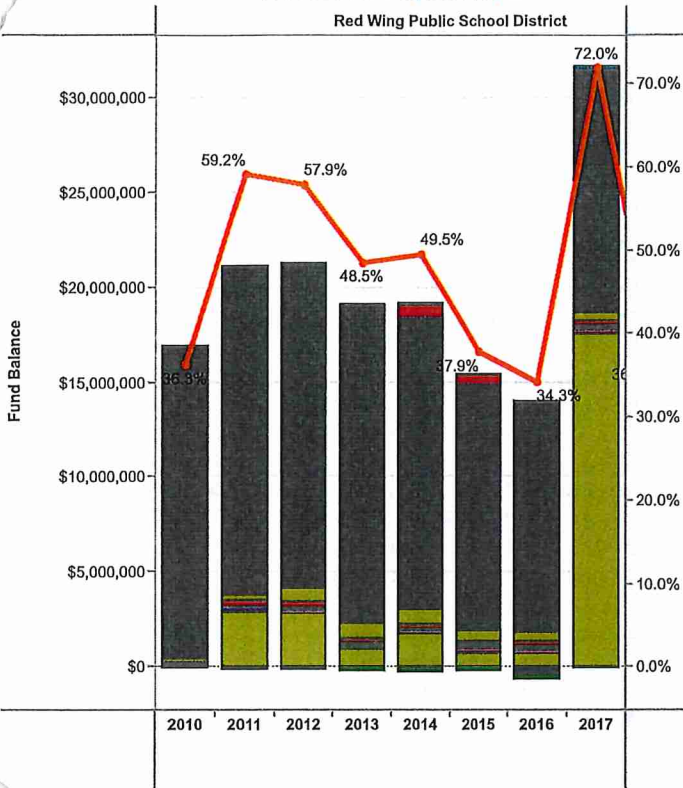
For more detailed analytics of this data visit the 5Sight Home page: <https://5share.com/5sight/home.html>

Fund Balance by Fund and Percentage

District(s): Red Wing Public School District
 Shown as a % of Expense

Note: % of Revenues or Expenses reflects selected funds only
 Source: UFARS Compliance Report

Red Wing Public School District



Detail by:

- 4.03 RESTRICTED/RESERVED FOR STAFF DEVELOPMENT
- 4.05 RESTRICTED/RESERVED FOR DEFERRED MAINTENANCE
- 4.06 RESTRICTED/RESERVED FOR HEALTH AND SAFETY
- 4.09 RESTRICTED/RESERVED FOR ALTERNATIVE FACILITIES PROGRAM
- 4.22 UNASSIGNED FUND BALANCE
- 4.24 RESTRICTED/RESERVED FOR OPERATING CAPITAL
- 4.28 RESTRICTED/RESERVED FOR LEARNING AND DEVELOPMENT
- 4.30 INVESTMENT IN GENERAL FIXED ASSETS
- 4.31 RESTRICTED/RESERVED FOR COMMUNITY EDUCATION
- 4.32 RESTRICTED/RESERVED FOR EARLY CHILDHOOD AND FAMILY EDUCATION
- 4.34 RESTRICTED/RESERVED FOR AREA LEARNING CENTER
- 4.38 RESTRICTED/RESERVED FOR GIFTED AND TALENTED
- 4.40 RESTRICTED/RESERVED FOR TEACHER DEVELOPMENT AND EVALUATION
- 4.41 RESTRICTED/RESERVED FOR BASIC SKILLS PROGRAMS
- 4.44 RESTRICTED/RESERVED FOR SCHOOL READINESS
- 4.45 RESTRICTED/RESERVED FOR CAREER AND TECHNICAL PROGRAMS
- 4.47 RESTRICTED/RESERVED FOR ADULT BASIC EDUCATION
- 4.49 RESTRICTED/RESERVED FOR SAFE SCHOOLS – CRIME LEVY
- 4.59 Restricted/Reserved For Basic Skills Extended Time
- 4.60 NONSPENDABLE FUND BALANCE
- 4.62 ASSIGNED FUND BALANCE
- 4.63 UNASSIGNED FUND BALANCE
- 4.64 RESTRICTED FUND BALANCE
- 4.67 UNASSIGNED FUND BALANCE
- 4.72 Restricted/Reserved for Medical Assistance

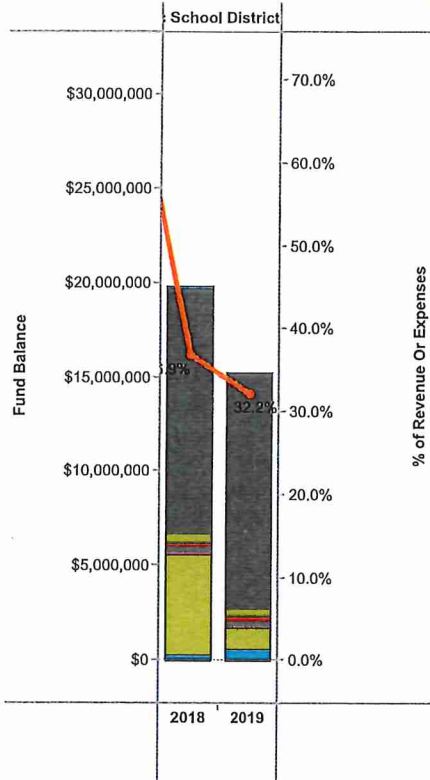
Measure Names

- % of Revenue Or Expenses

Fund Balance by Fund and Percentage

District(s): Red Wing Public School District
Shown as a % of Expense

Note: % of Revenues or Expenses reflects selected funds only
Source: UFARS Compliance Report



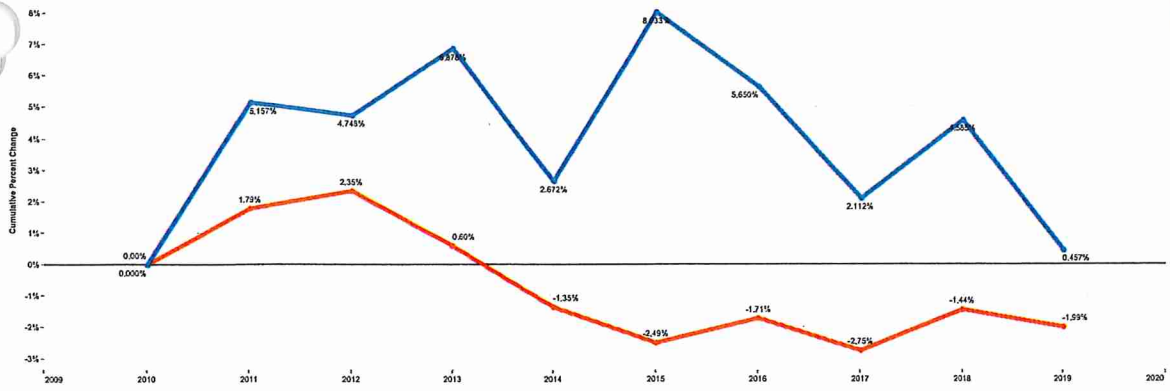
Detail by:

- 4.03 RESTRICTED/RESERVED FOR STAFF DEVELOPMENT
- 4.05 RESTRICTED/RESERVED FOR DEFERRED MAINTENANCE
- 4.06 RESTRICTED/RESERVED FOR HEALTH AND SAFETY
- 4.09 RESTRICTED/RESERVED FOR ALTERNATIVE FACILITIES PROGRAM
- 4.22 UNASSIGNED FUND BALANCE
- 4.24 RESTRICTED/RESERVED FOR OPERATING CAPITAL
- 4.28 RESTRICTED/RESERVED FOR LEARNING AND DEVELOPMENT
- 4.30 INVESTMENT IN GENERAL FIXED ASSETS
- 4.31 RESTRICTED/RESERVED FOR COMMUNITY EDUCATION
- 4.32 RESTRICTED/RESERVED FOR EARLY CHILDHOOD AND FAMILY EDUCATION
- 4.34 RESTRICTED/RESERVED FOR AREA LEARNING CENTER
- 4.38 RESTRICTED/RESERVED FOR GIFTED AND TALENTED
- 4.40 RESTRICTED/RESERVED FOR TEACHER DEVELOPMENT AND EVALUATION
- 4.41 RESTRICTED/RESERVED FOR BASIC SKILLS PROGRAMS
- 4.44 RESTRICTED/RESERVED FOR SCHOOL READINESS
- 4.45 RESTRICTED/RESERVED FOR CAREER AND TECHNICAL PROGRAMS
- 4.47 RESTRICTED/RESERVED FOR ADULT BASIC EDUCATION
- 4.49 RESTRICTED/RESERVED FOR SAFE SCHOOLS – CRIME LEVY
- 4.59 Restricted/Reserved For Basic Skills Extended Time
- 4.60 NONSPENDABLE FUND BALANCE
- 4.62 ASSIGNED FUND BALANCE
- 4.63 UNASSIGNED FUND BALANCE
- 4.64 RESTRICTED FUND BALANCE
- 4.67 UNASSIGNED FUND BALANCE
- 4.72 Restricted/Reserved for Medical Assistance

Measure Names

- % of Revenue Or Expenses

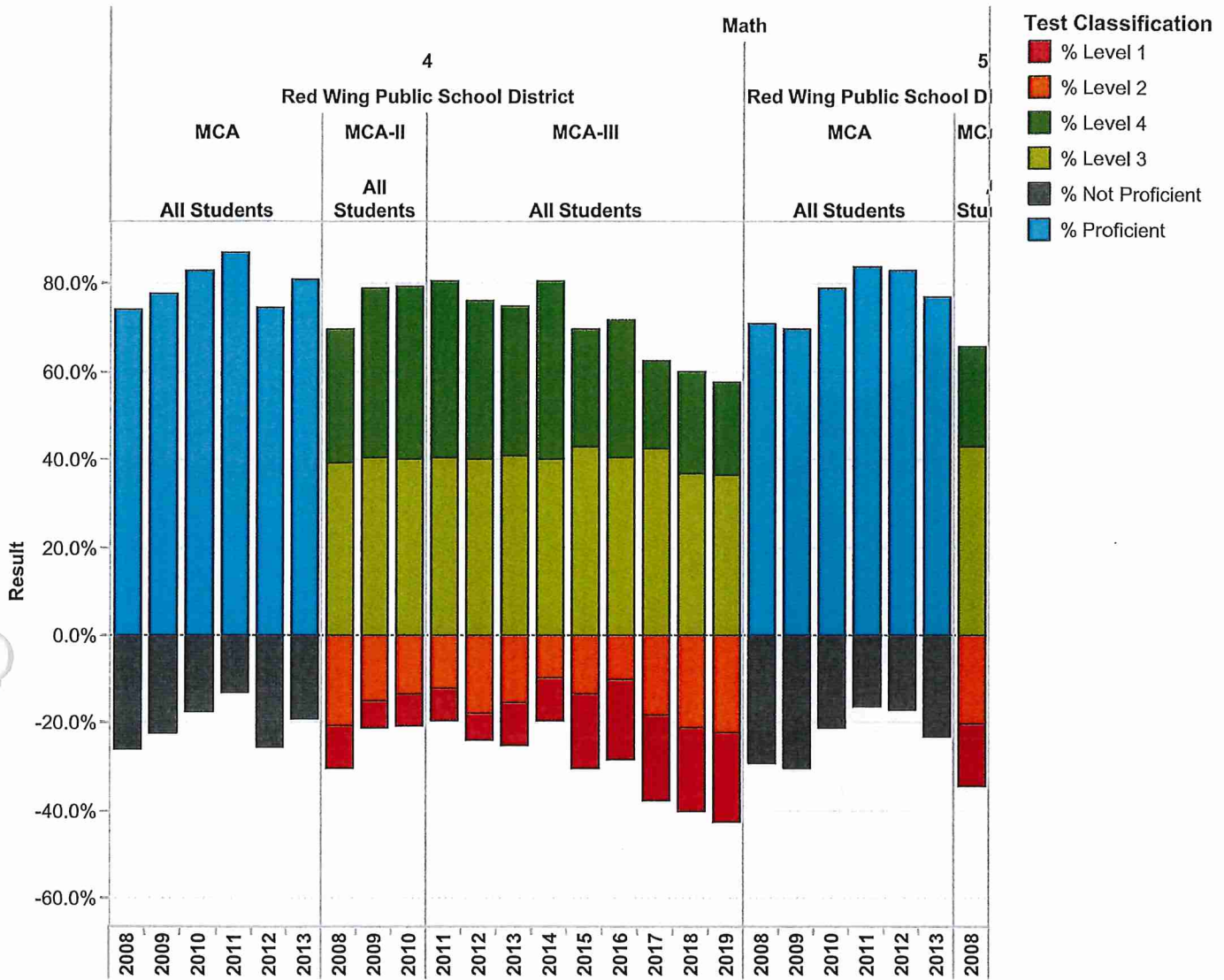
FTE Change versus Enrollment Change
 Cumulative Change from Base Year
 District: Red Wing Public School District
 Pos(Serie): Teacher
 Note: Per student calculations use enrollment when ADM is not yet available
 Source: Licensed Staff Files from MDE



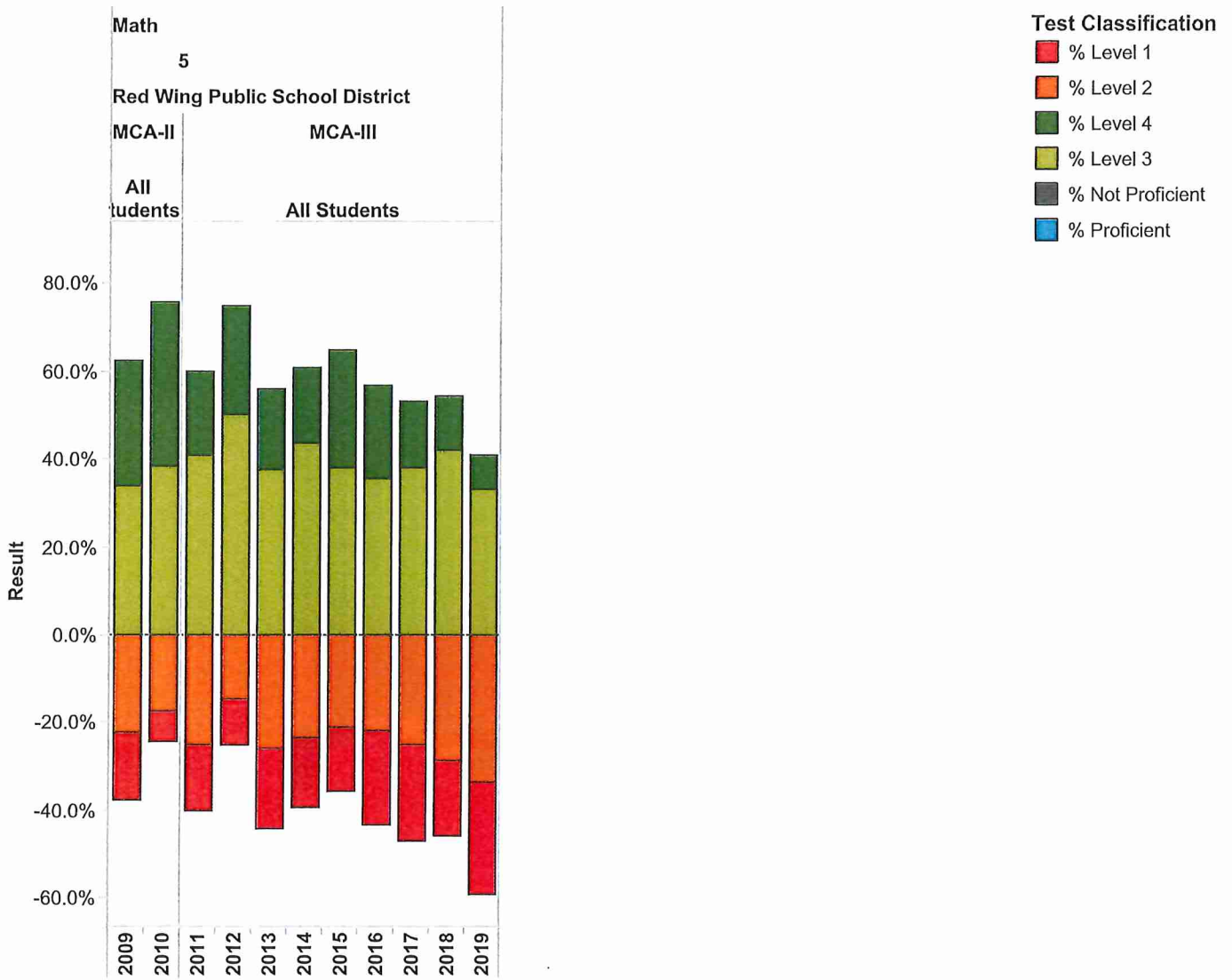
Measure Name
 % Difference in Avg. District ADM from the First along Table (Across)
 % Difference in FTE

MCA Results By District

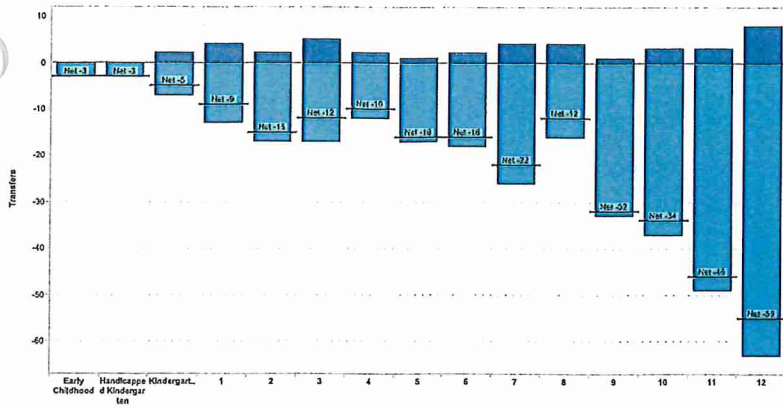
District(s): Red Wing Public School District
 Grade(s): 4 & 5
 Source: Minnesota State Report Card



MCA Results By District
 District(s): Red Wing Public School District
 Grade(s): 4 & 5
 Source: Minnesota State Report Card



Net Open Enrollment by Grade
 Source: MN Open Enrollment File



Year
2019

District
Red Wing Public School District

Grade Level Name

- Early Childhood
- Voluntary Pre-Kindergarten
- Handicapped Kindergarten
- Kindergarten
- 1
- 2
- 3
- 4
- 5
- 6
- 7
- 8
- 9
- 10
- 11
- 12

Direction

- Inbound
- Outbound

