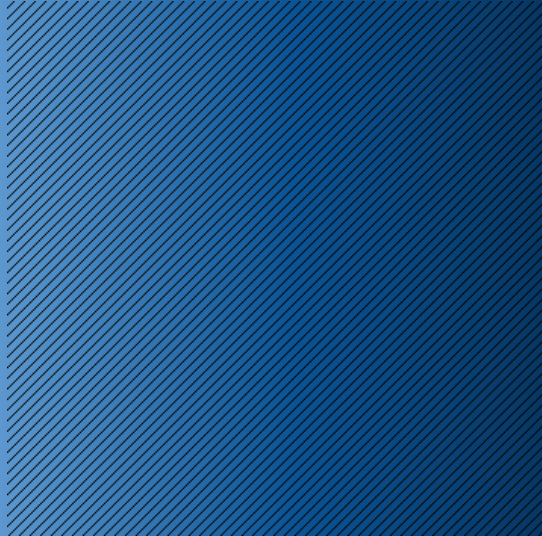


LONG TERM

FACILITY PLAN COMMITTEE



OUR COMMITTEE



- 13 Community Members
- 5 Teachers / Principals
- 1 Long Range Consultant
- 6 District Admin
- 1 Partnership Consultant

Timeline

- Long Range Facility Planning Introduction - **19 Sept 23**
- Guiding Principles - **17 Oct 23**
- Facility Tour - **14 Nov 23**
- Capacity Study - **5 Dec 23**
- Financial Breakdown - **16 Jan 24**
- Implementation Study - **6 Feb 24**
- Recommendations - **12 Mar 24**
- Board Presentation - **23 April 24**



LONG TERM FACILITY PLANNING

WHY



GUIDELINES

LONG TERM FACILITY PLANNING
OUR WHY

Our Goal

- **Who**

- Long Range Facility Planning Committee (L.R.F.P.C.)

- **What**

- Rightsize Fort Smith Public Schools so it can use the District's assets to support Student Success

- **When**

- In 0-5 years, In 5-10 years, In 10-15 years

- **How**

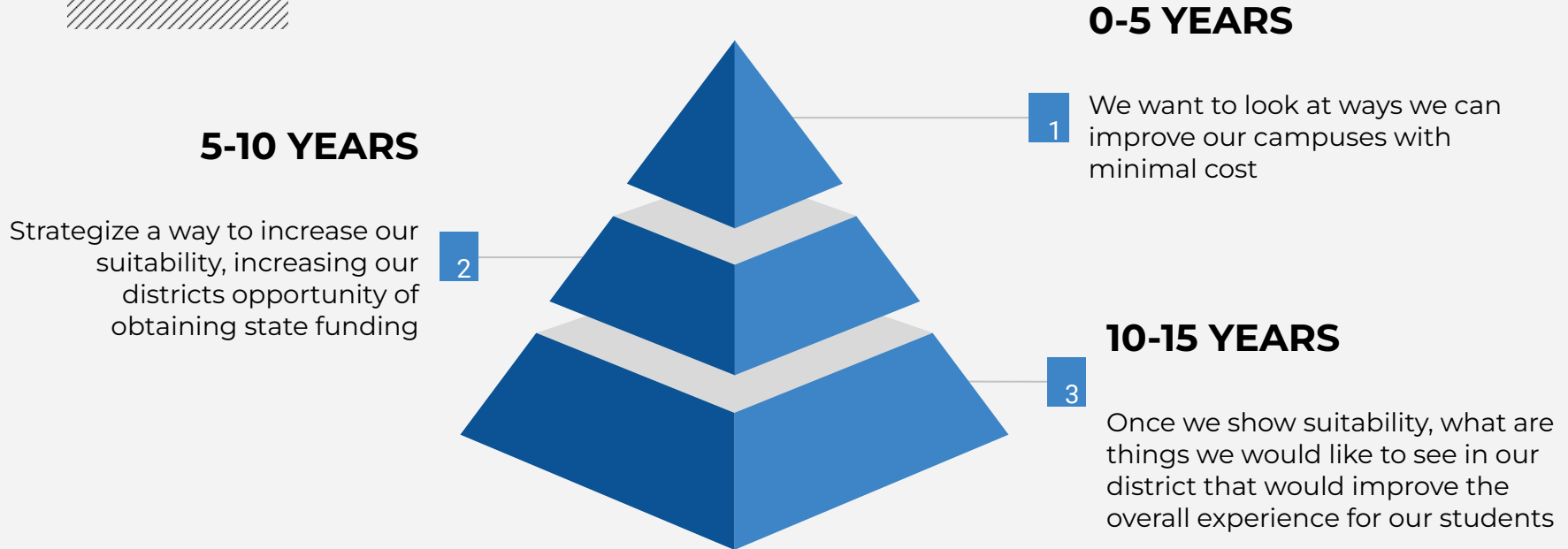
- Leverage available dollars

- **Why**

- Renew/Revitalize to ensure Safety, Relevance and Efficiency
- To rightsize elementary campuses
- Target a proper utilization rate of +/- 80%

WHAT SHOULD WE LOOK LIKE

RIGHTSIZING APPROACH





OVERVIEW

DISTRICT FACILITIES

Downloaded from <https://www.cambridge.org/core>. University of Cambridge, on 01 Jun 2018 at 10:00:00, subject to the Cambridge Core terms of use, available at <https://www.cambridge.org/core/terms>. <https://doi.org/10.1017/9781315326477.006>



- Over 3 million square feet of facilities
- 33 Campus/Sites
- 119 Buildings
- Average facility age is 63 years

SCHOOL TOURS

TRUSTY ELEMENTARY

TRUSTY ELEMENTARY

Established: 1928
 Square Footage: 35,866
 Cafeteria: 1,862 S.F.
 Classrooms: 12
 Classrooms that meet
 state standards: 1
 121 Students
 Classroom Utilization: 42%



MEDIA CENTER

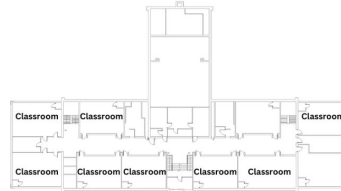


DINING AREA

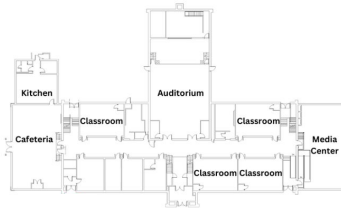


SECURE VESTIBULE

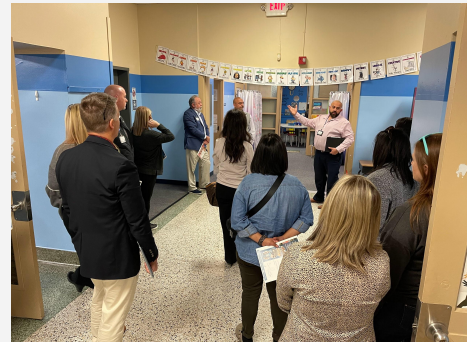
FLOOR PLANS



2ND FLOOR



1ST FLOOR



**GUIDING
PRINCIPLES**



Renew & Revitalize



Ensure Safety



Relevance & Efficiency

SCHOOL TOURS

MORRISON ELEMENTARY

MORRISON ELEMENTARY

Established: 1975
 Square Footage: 63,867
 Cafeteria: 3,367 S.F.
 Classrooms: 30
 Classrooms that meet
 state standards: 30
 411 Students
 Classroom Utilization: 90%



MEDIA CENTER



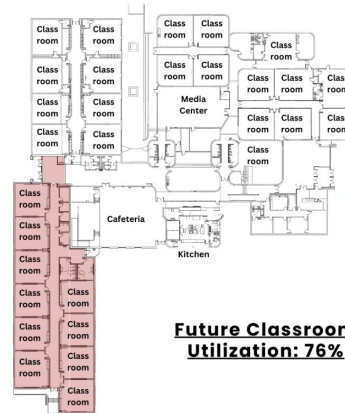
DINING AREA



SECURE VESTIBULE



FLOOR PLANS



**Future Classroom
Utilization: 76%**

*Area highlighted is currently
under construction.



**GUIDING
PRINCIPLES**



Renew & Revitalize



Ensure Safety



Relevance & Efficiency

Timeline

- Long Range Facility Planning Introduction - **19 Sept 23**
- Guiding Principles - **17 Oct 23**
- Facility Tour - **14 Nov 23**
- Capacity Study - **5 Dec 23**
- Financial Breakdown - **16 Jan 24**
- Implementation Study - **6 Feb 24**
- Recommendations - **12 Mar 24**
- Board Presentation - **23 April 24**



LONG TERM FACILITY PLANNING

THANK
YOU

