

An architectural rendering of a modern school hallway. The walls are made of light-colored wood panels. On the right wall, several posters are displayed, including one for 'WALDPORT High SCHOOL' and another for 'HAMILTON AN AMERICAN MUSICAL'. A large, intricate mobile sculpture hangs from the ceiling. In the foreground, two stylized human figures are walking. The floor is made of large, light-colored tiles. The overall atmosphere is bright and modern.

Lincoln County School District

Newport, Waldport, and Toledo High School
Performing Arts

Board Meeting Presentation

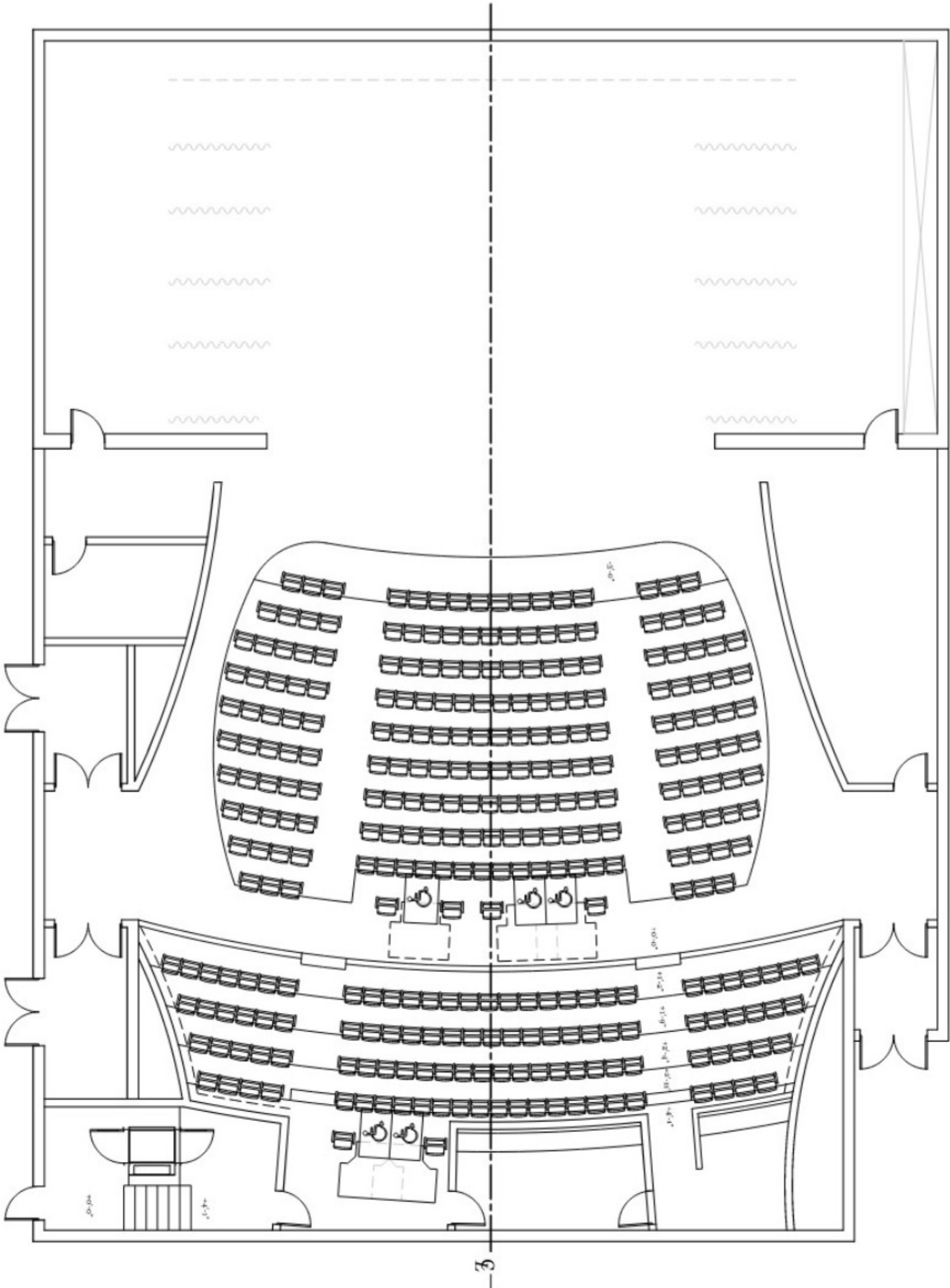
November 12, 2025

Agenda

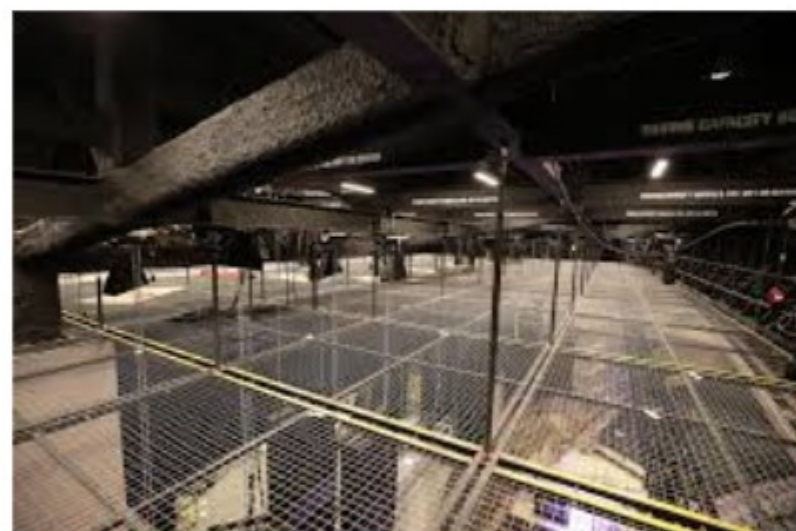
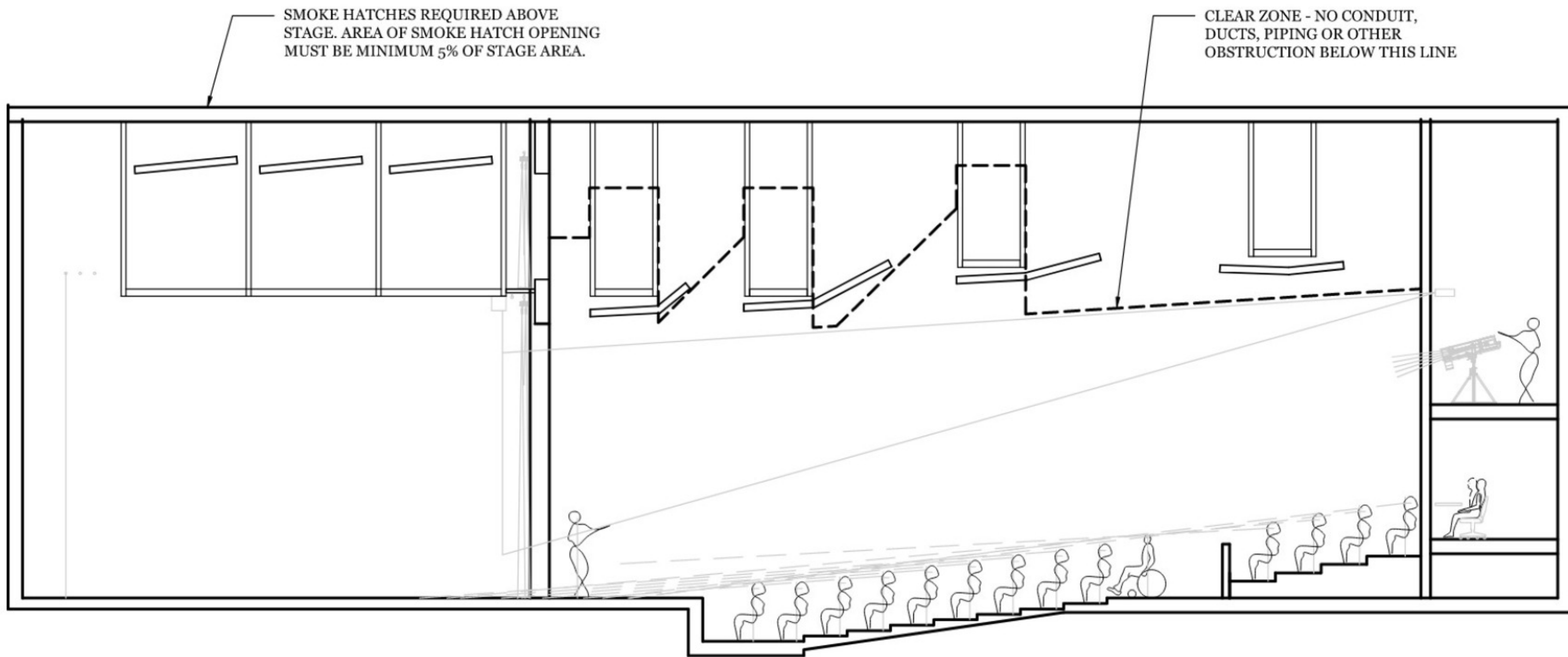
- **Auditorium Concepts**
- **Newport**
 - Plans
 - Massing
- **Waldport**
 - Plans
 - Massing
- **Toledo**
 - Plans
 - Massing

Auditorium Layout

Auditorium Plan



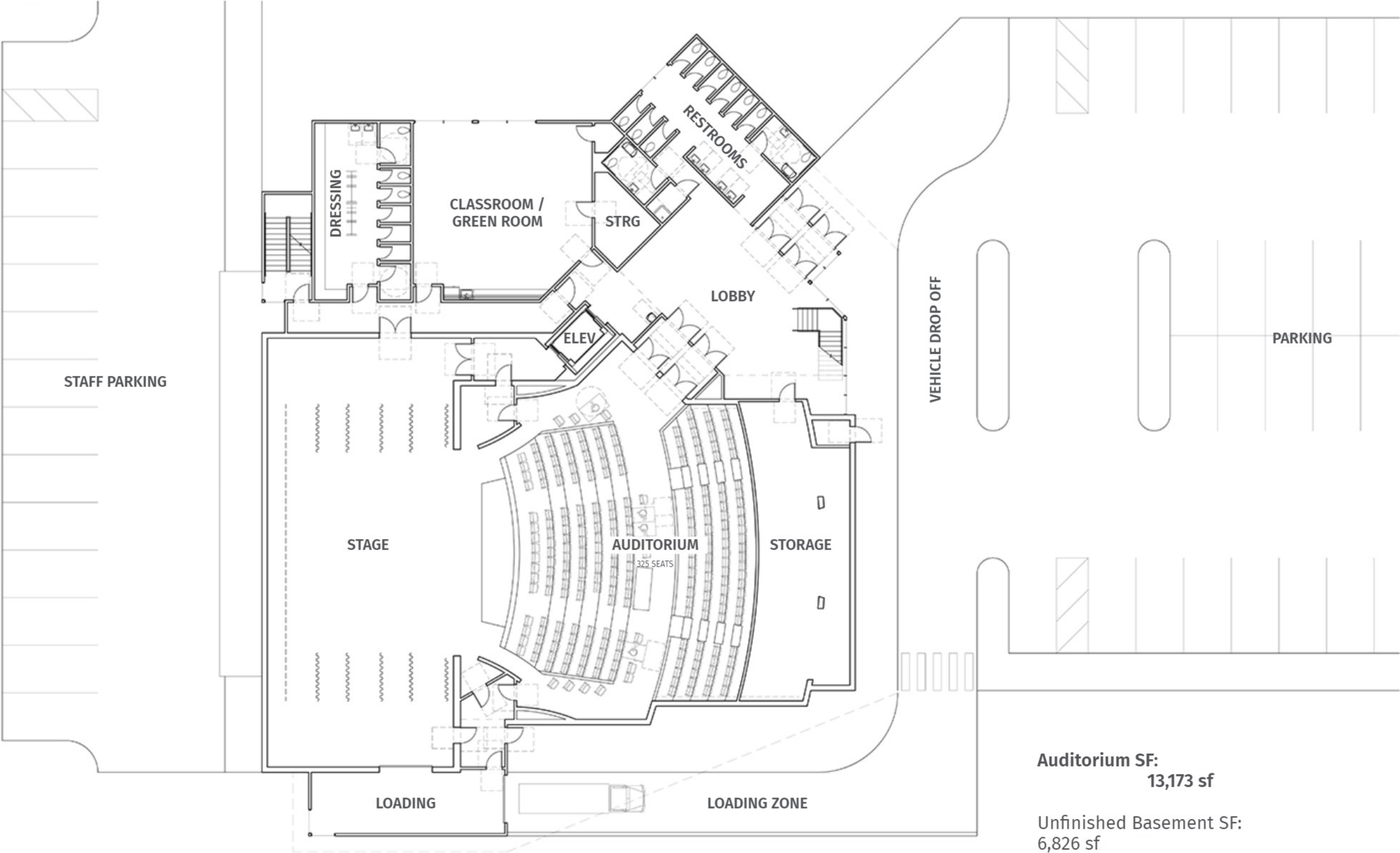
Auditorium Section



Newport High School

Concept Floor Plan - Main Level

Newport High School

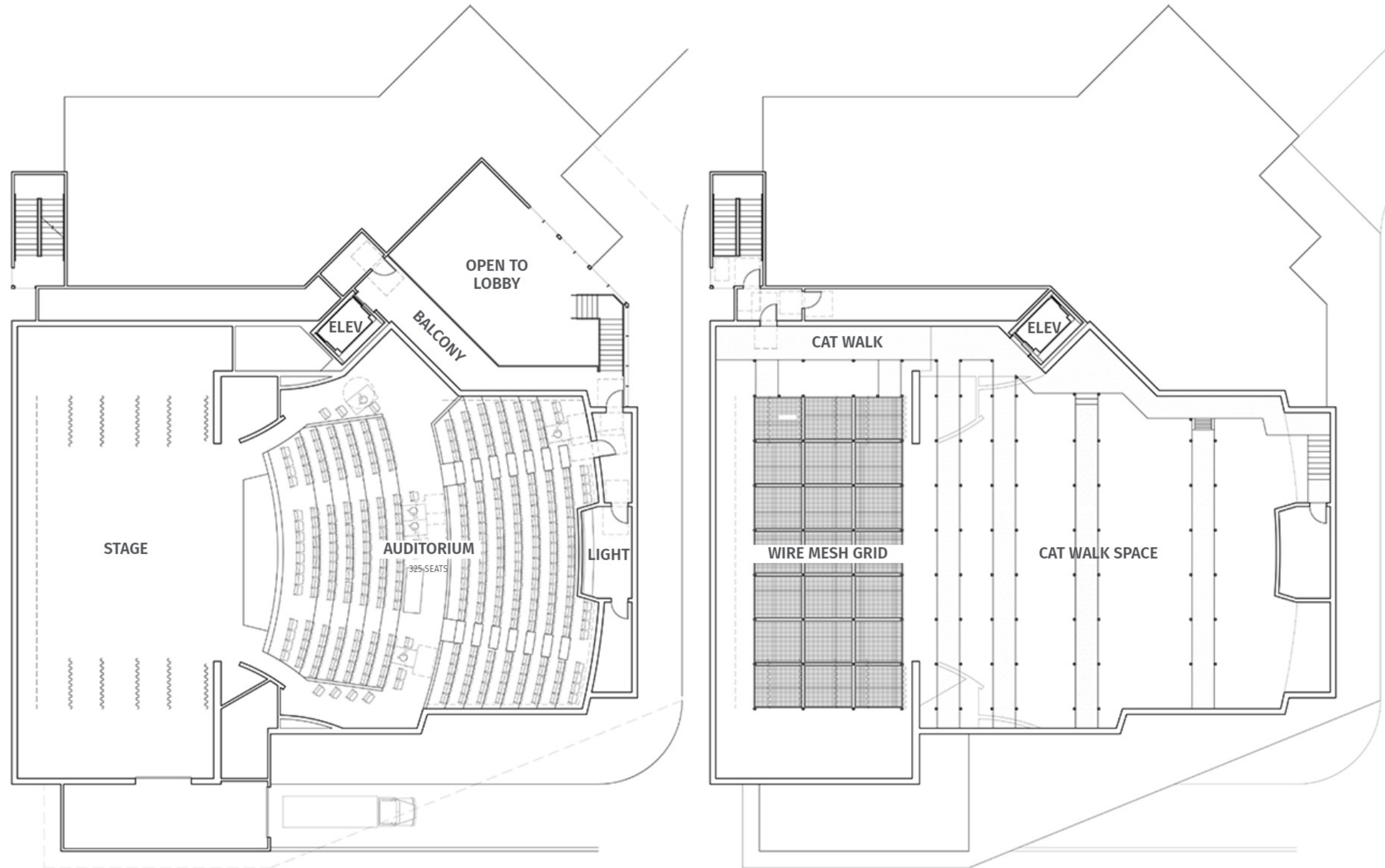


Auditorium SF:
13,173 sf

Unfinished Basement SF:
6,826 sf

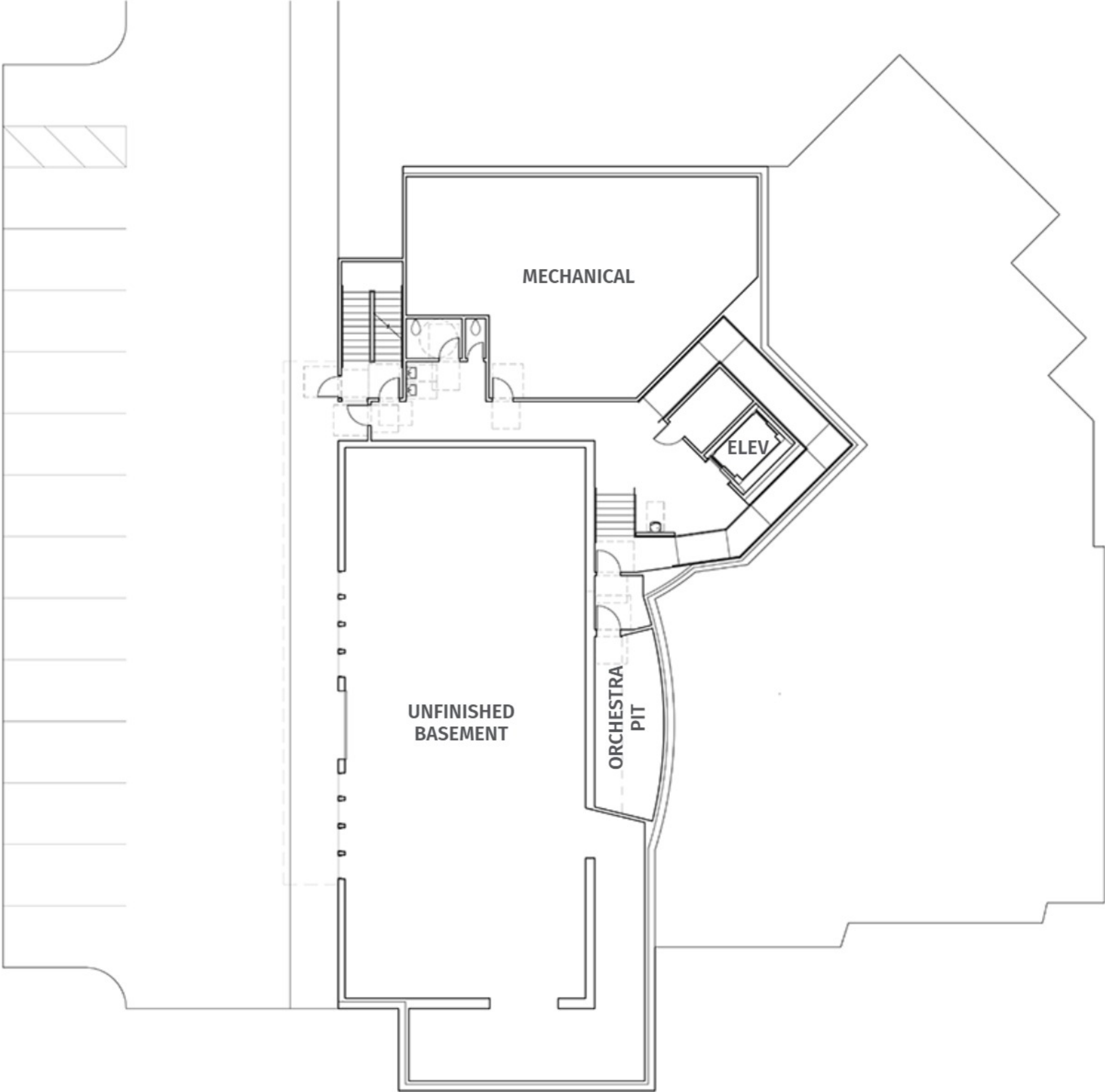
Concept Floor Plan - Upper Level and Cat Walk Level

Newport High School



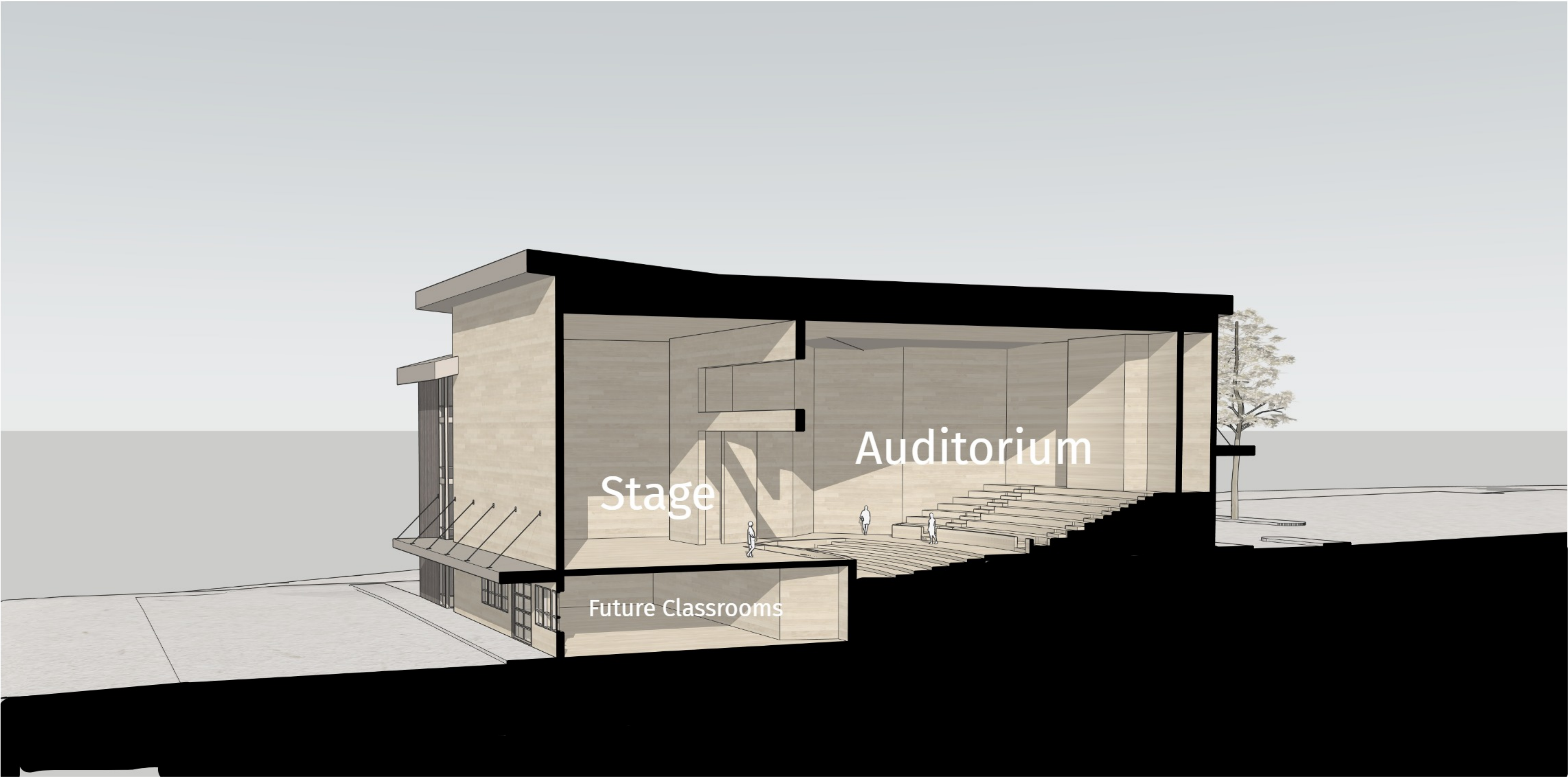
Concept Floor Plan - Basement Level

Newport High School



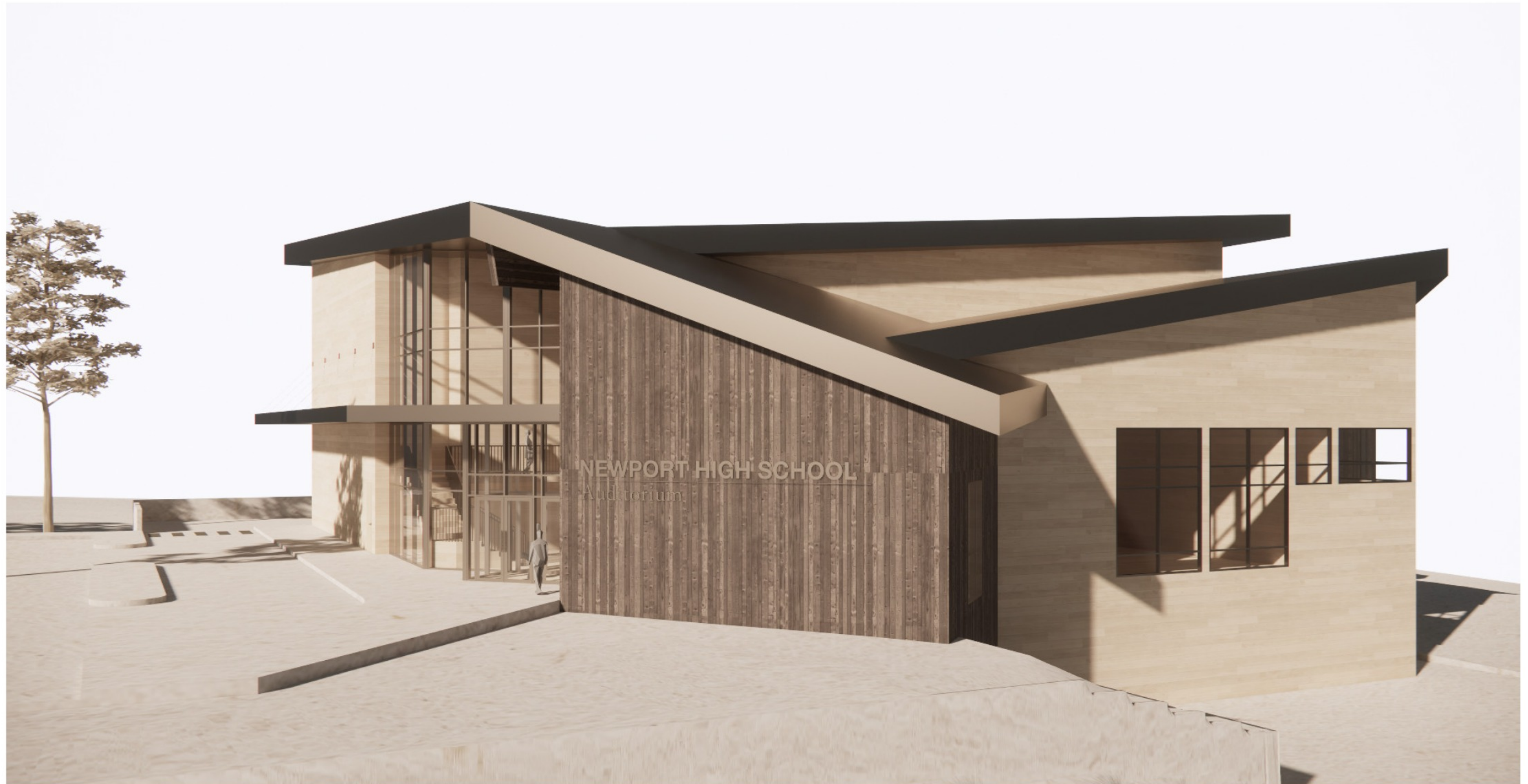
E/W Section Through Auditorium

Newport High School



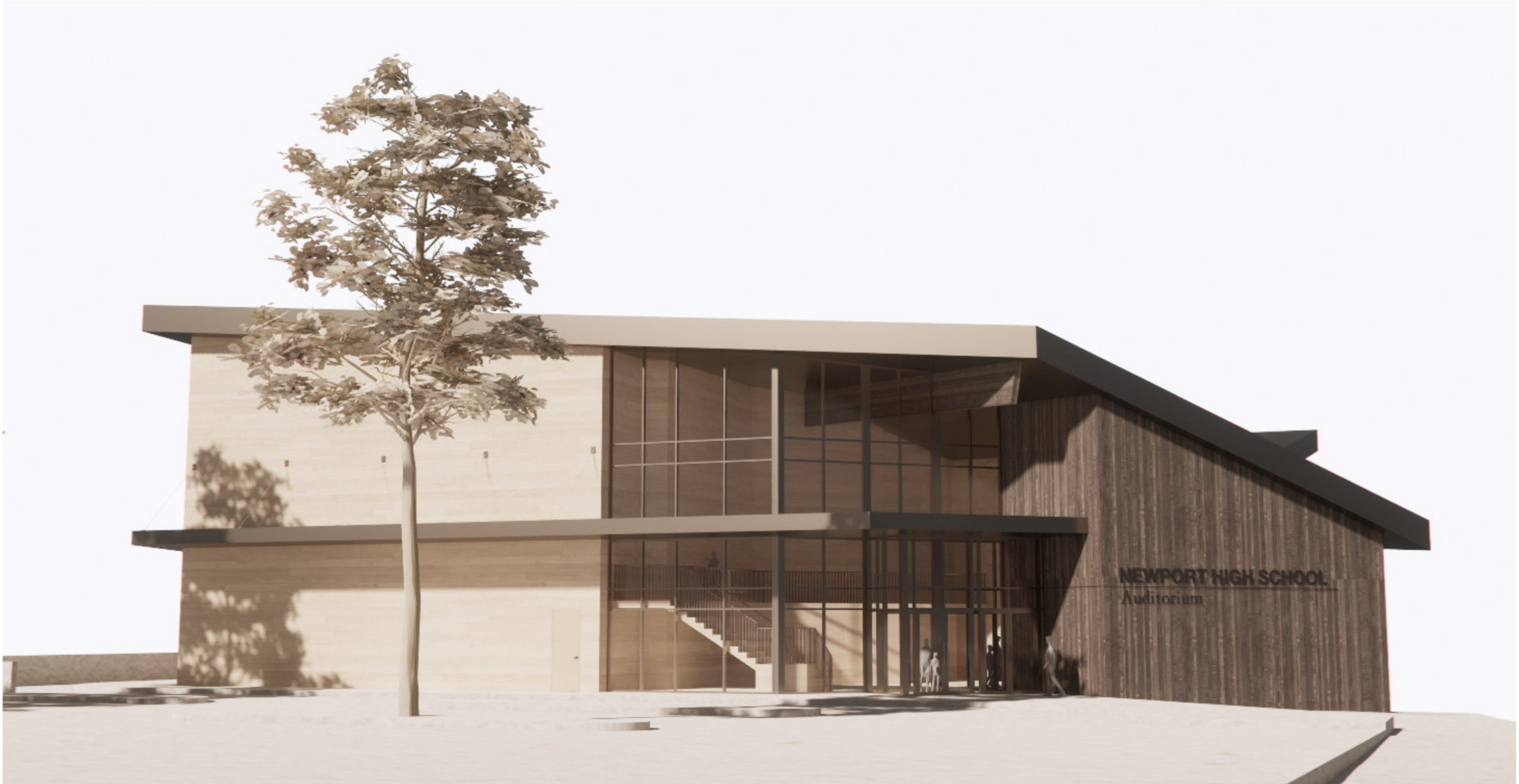
Concept Massing

Newport High School



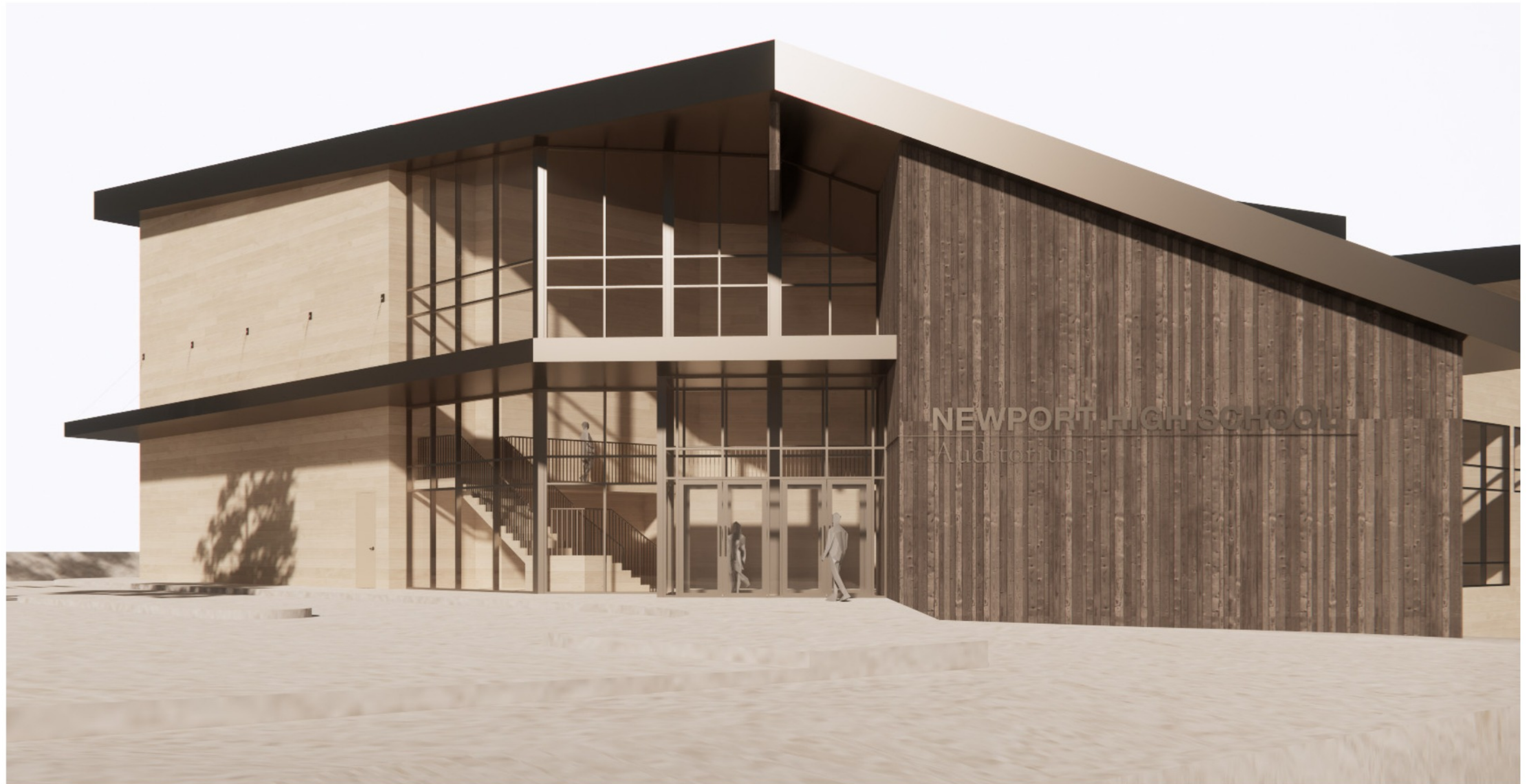
Concept Massing

Newport High School



Concept Massing

Newport High School



Concept Massing

Newport High School



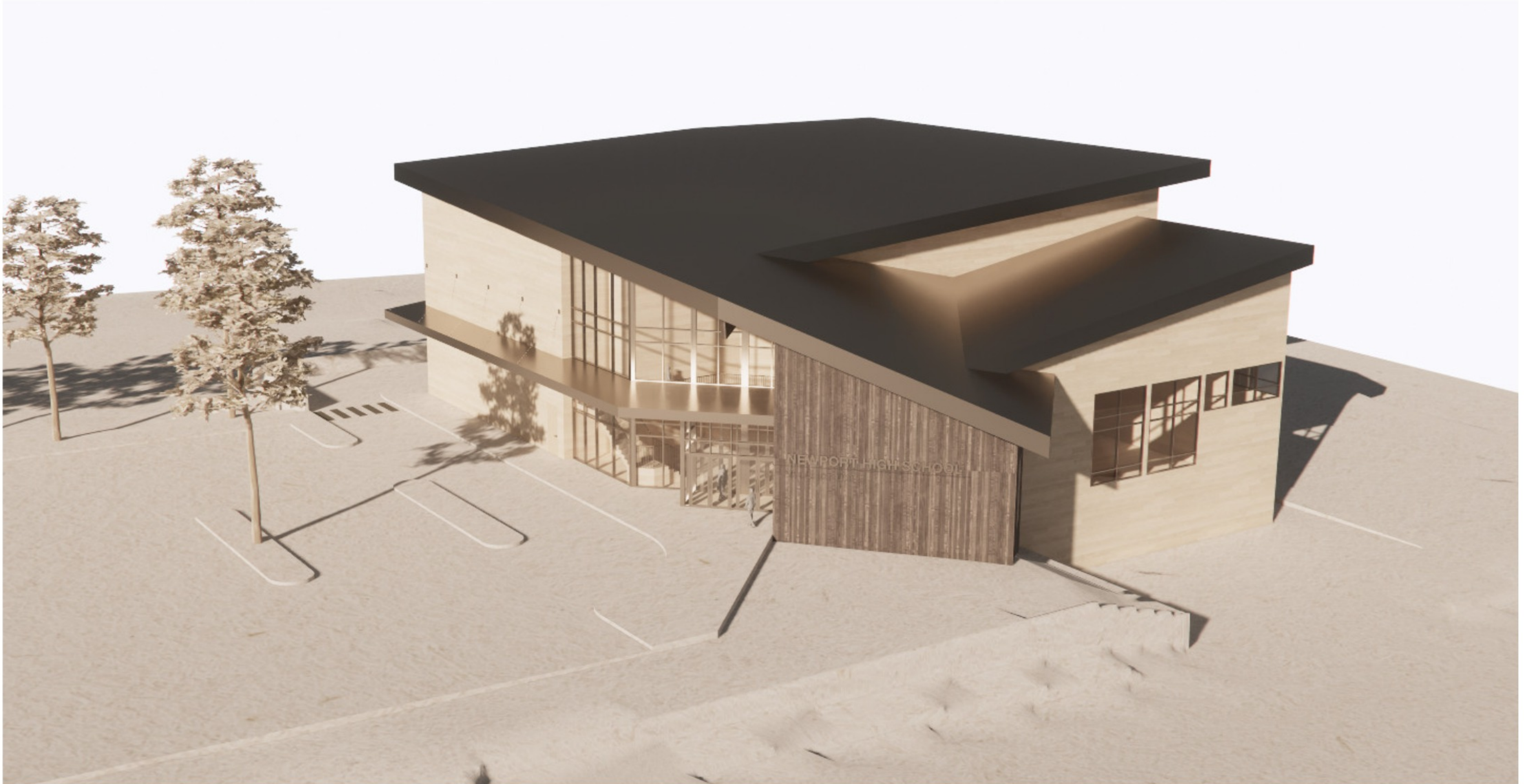
Concept Massing

Newport High School



Concept Massing

Newport High School



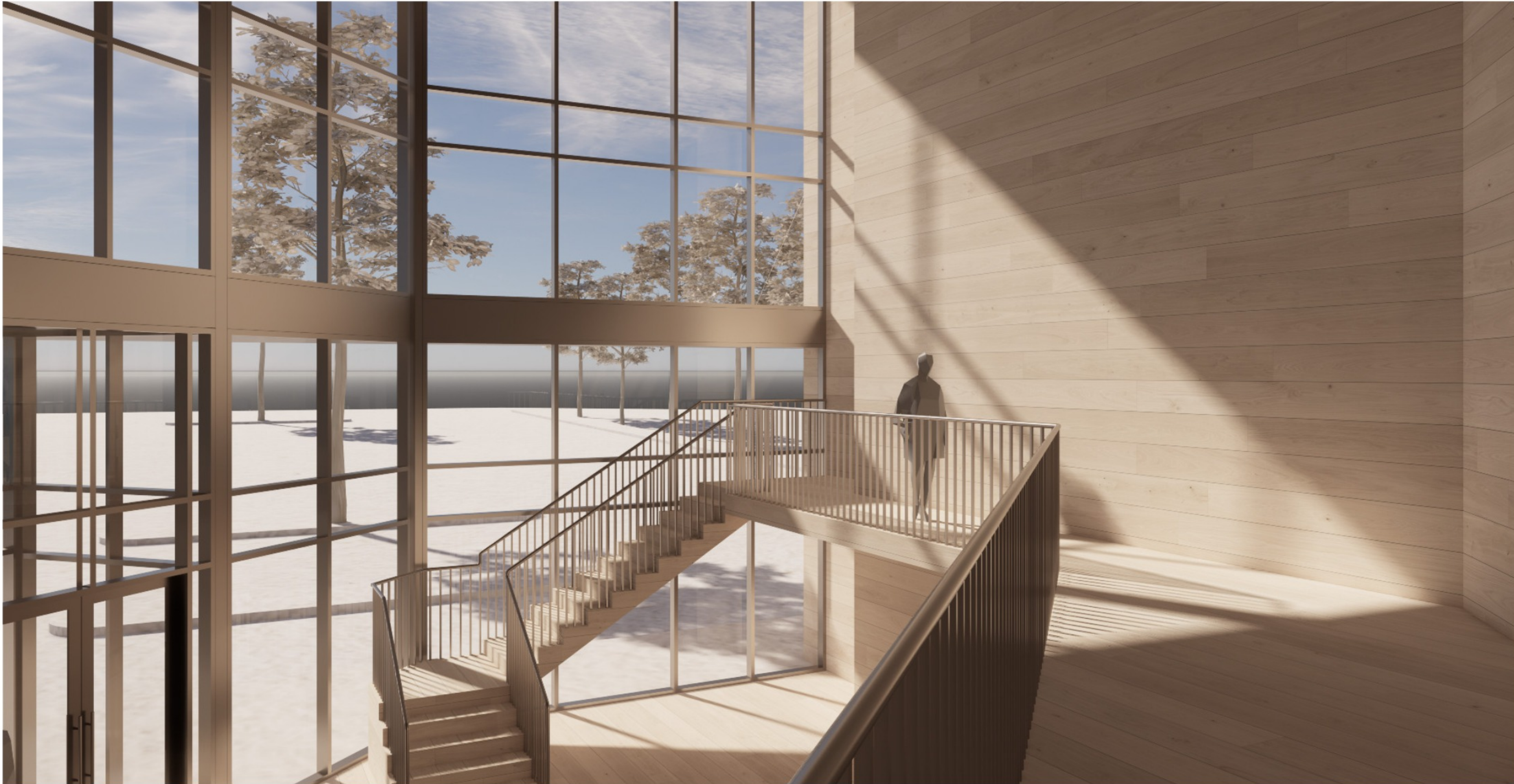
Concept Massing

Newport High School



Concept Massing

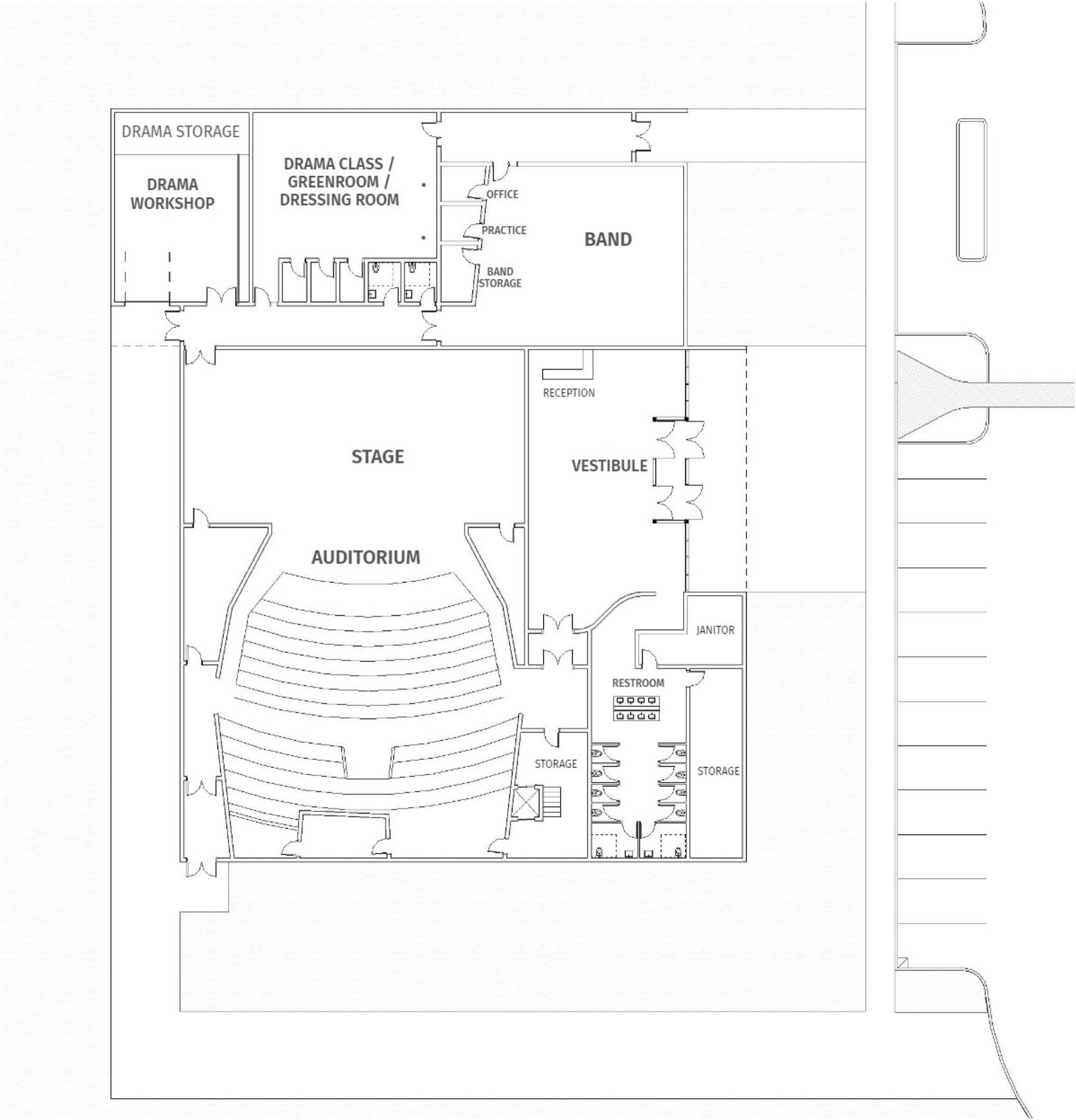
Newport High School



Waldport High School

Concept Floor Plan

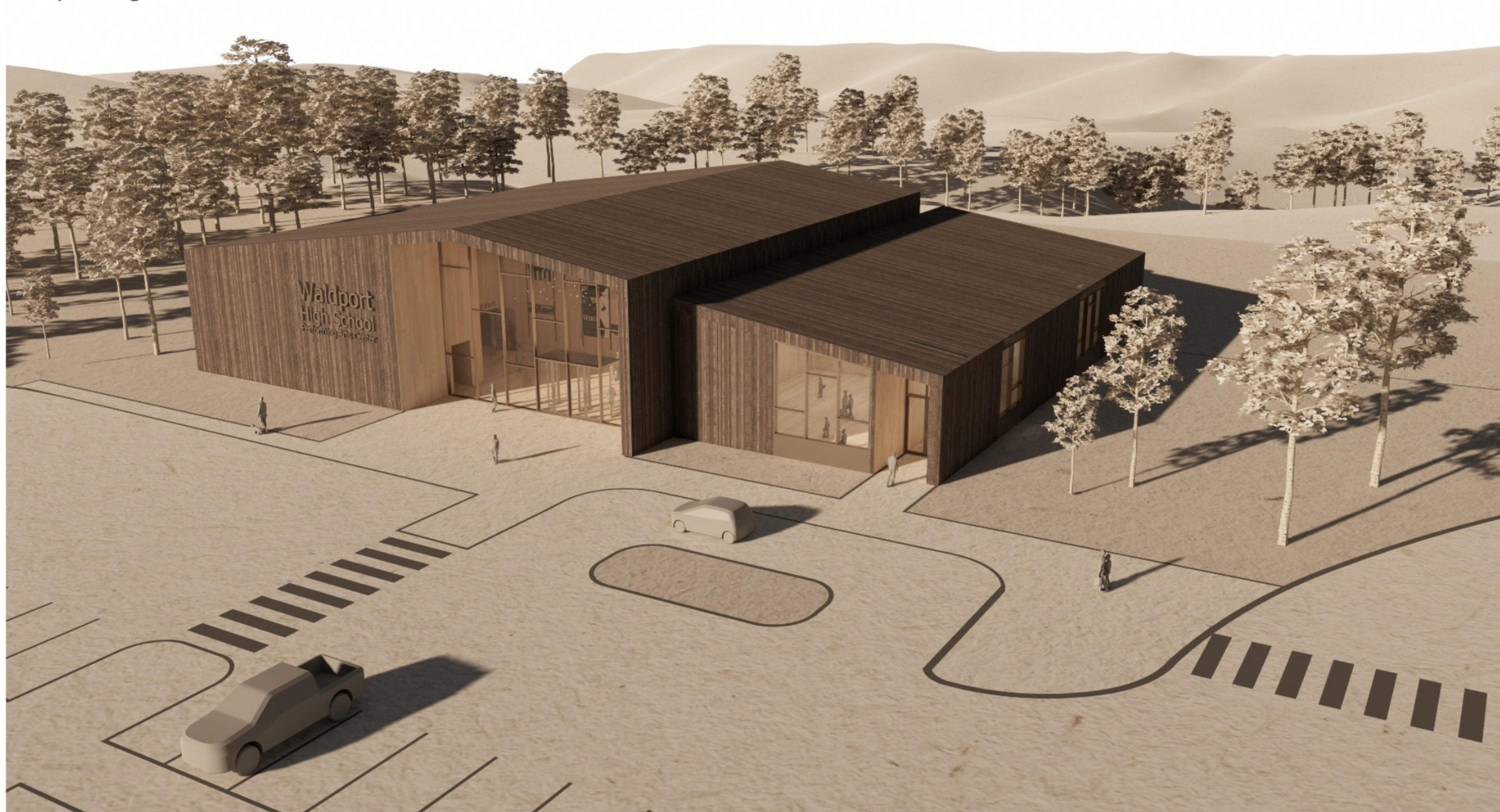
Waldport High School



Total SF:	16,000 sf
Classroom Wing -	5,000 sf
Auditorium -	11,000 sf

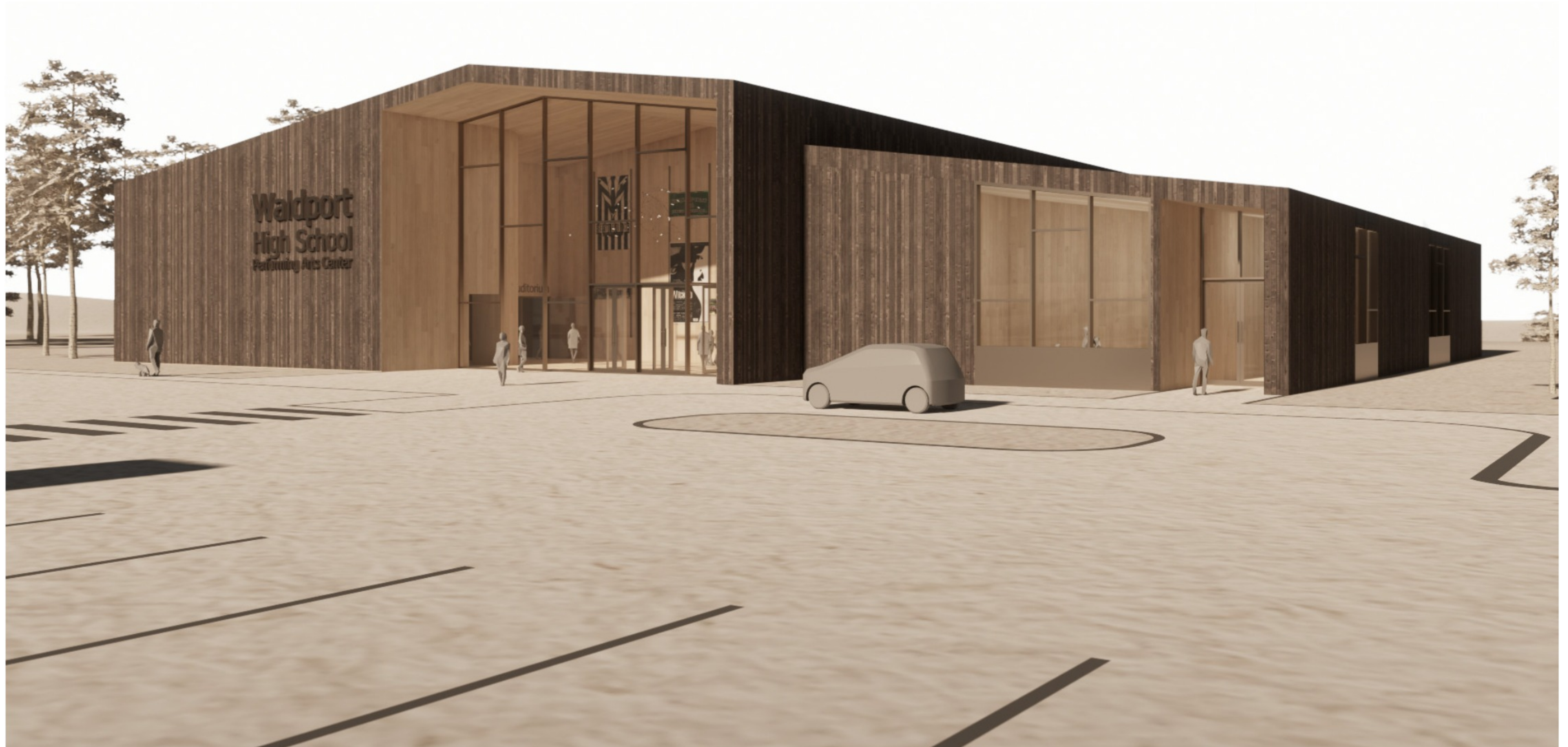
Concept Massing

Waldport High School



Concept Massing

Waldport High School



Concept Massing

Waldport High School



Concept Massing

Waldport High School



Concept Massing

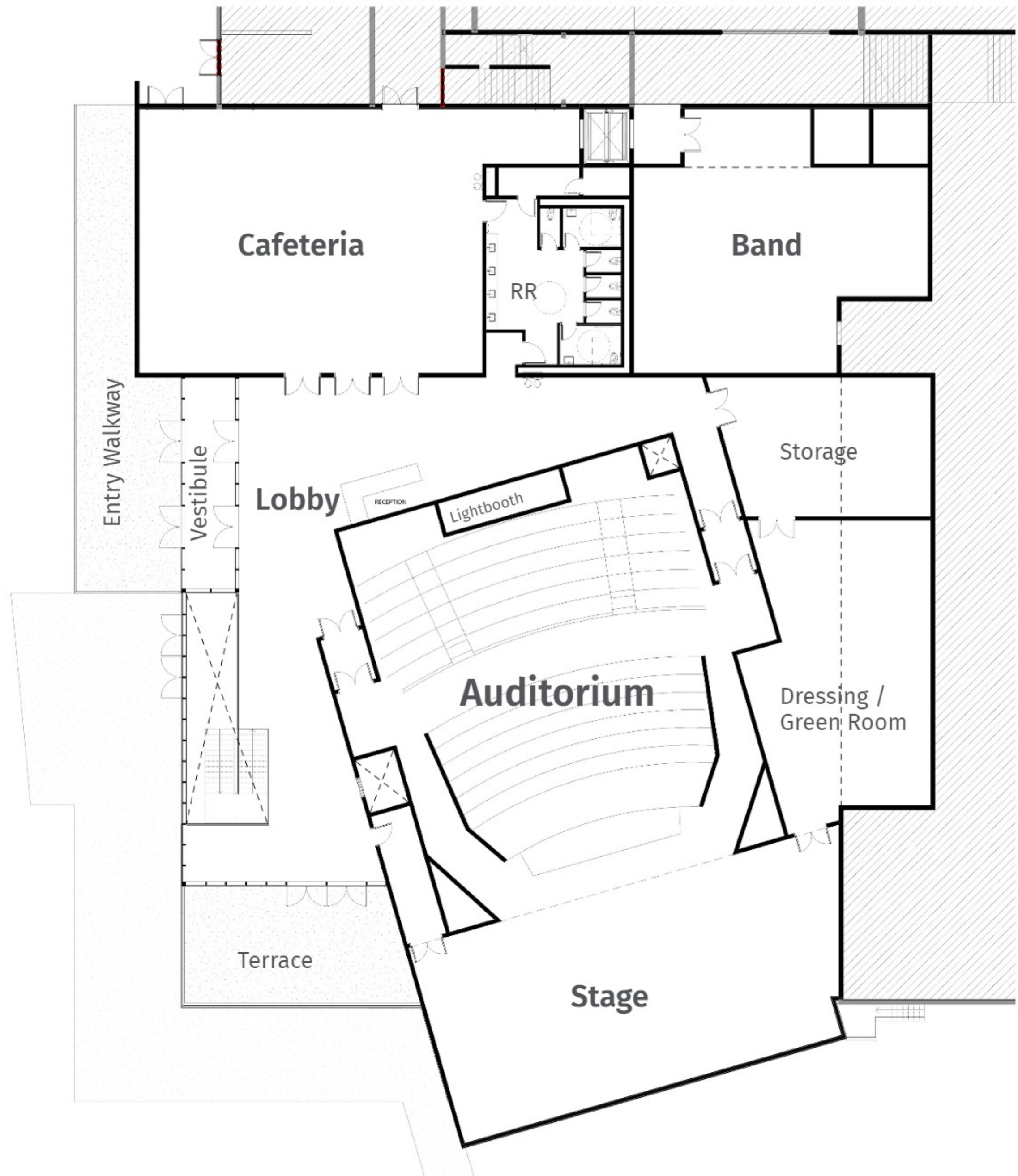
Waldport High School



Toledo High School

Concept Floor Plan - Main Level

Toledo High School

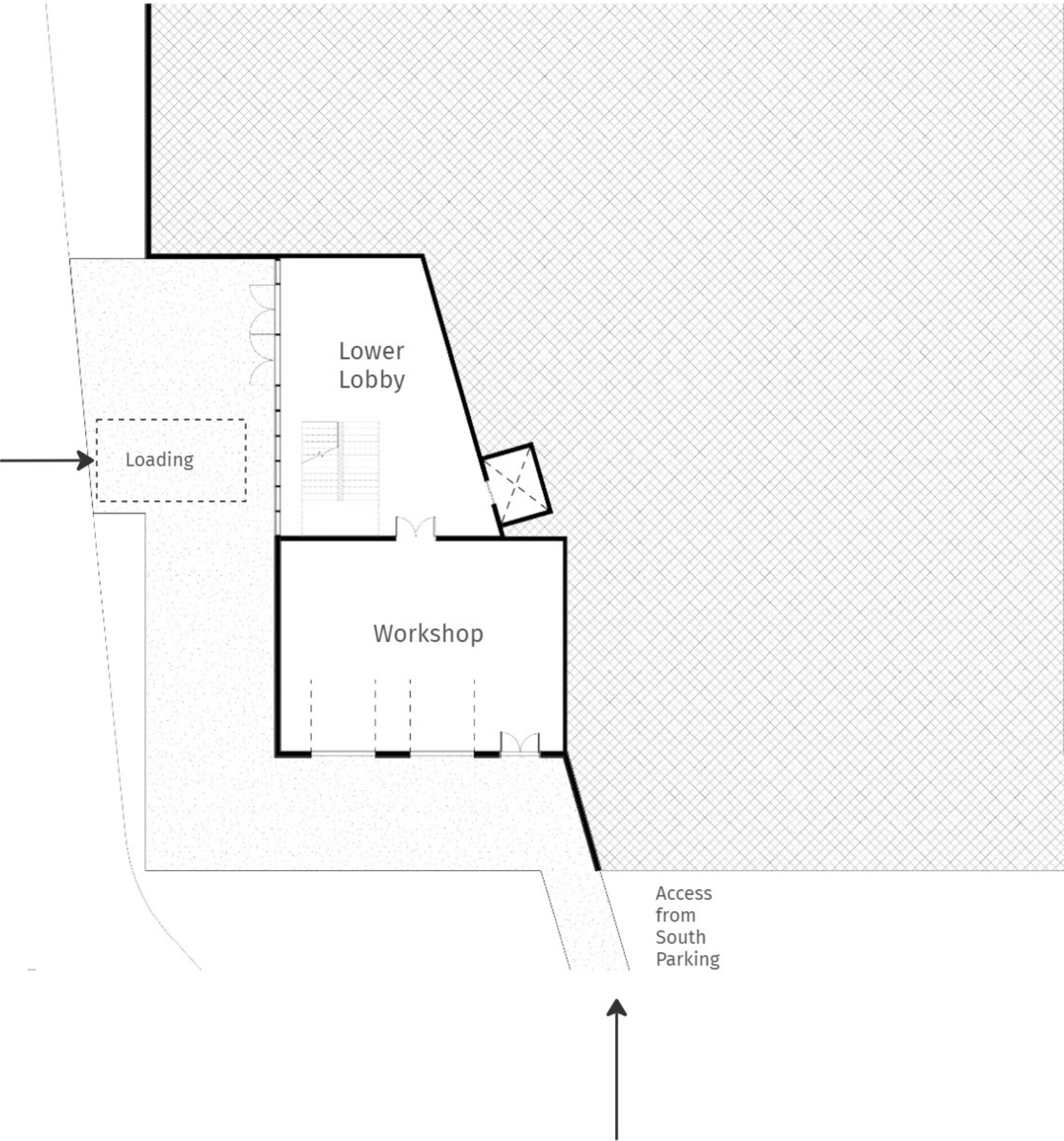


Total SF (new):
Main Floor -12,000 sf
Basement - 2,200 sf

Total SF (renovated): 7,000 sf

Concept Floor Plan - Basement Level

Toledo High School



Total SF (new):
 Main Floor - **12,000 sf**
 Basement - **2,200 sf**
Total SF (renovated): 7,000 sf

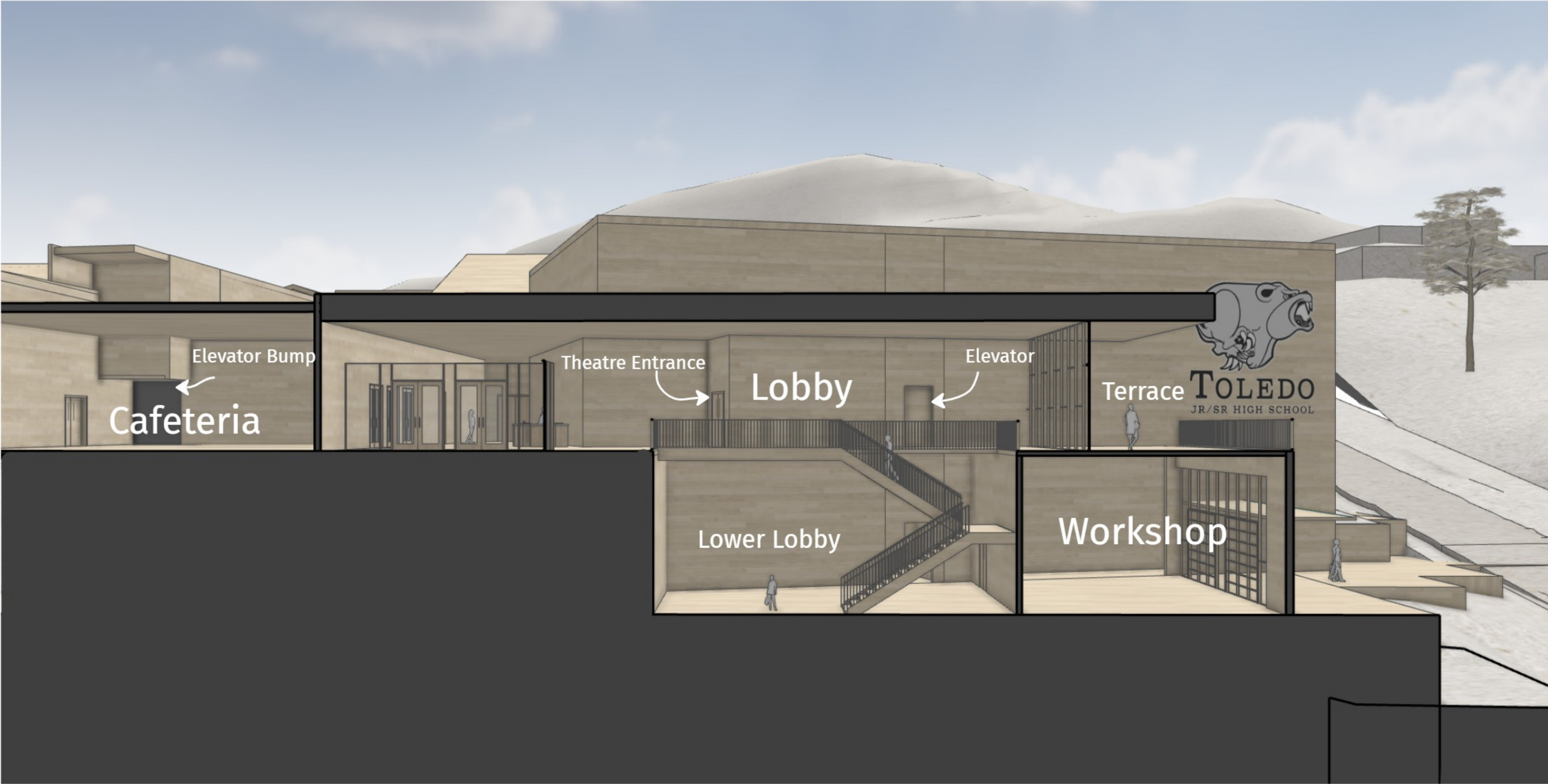
E/W Section Through Auditorium

Toledo High School



N/S Section Through Double Height Lobby

Toledo High School



Concept Massing

Toledo High School



Concept Massing

Toledo High School



Concept Massing

Toledo High School



Concept Massing

Toledo High School



Concept Massing

Toledo High School





Auditorium

Thank you

GLAS
ARCHITECTS, LLC

HACKER

 **capriarchitecture**
OREGON COAST ARCHITECTS