

ARGYLE ISD  
-#TogetherWeSoar-

# MS/HS Zoning

December 16, 2024



# Guiding Parameters

## Zoning Recommendation 7 GUIDING PARAMETERS:

1. Consider demographer projections to **maximize current capacities** to the **furthest extent (greatest number of years)** possible before a need to rezone and/or add capacities or third building option
2. Consider established neighborhoods and planned future developments
3. Consider railroad tracks, major highways, and commuting traffic
4. Consider future road construction (upcoming Hwy 377 Expansion)
5. Consider facility locations and proximities
6. Consider transportation routes
7. Consider where neighborhoods exit to major roads

**Zoning Feedback form was emailed to all parents November 18th, 2024 and closed December 2, 2024. Three main themes emerged.**



# November 18th, 2024 ORIGINAL Recommended Zone:

The **current zoning recommendation** states Vintage/Glenwood Meadows is zoned for CF HS and 407 MS. This allows the district to move beyond 2035/36 before running out of capacity at middle schools. This allows the district to reach 2035/36 at CF and 2032/33 at 377 before there are capacity issues at the two high schools. This provided the **longest time frame** based on **projections today**.



## High School Attendance Boundary

SCHOOL	CAPACITY	2024/25	2025/26	2026/27	2027/28	2028/29	2029/30	2030/31	2031/32	2032/33	2033/34	2034/35
CANYON FALLS HIGH SCHOOL	2,100				1,422	1,579	1,688	1,799	1,909	1,993	2,061	2,077
HWY 377 HIGH SCHOOL	1,300				771	894	1,027	1,188	1,298	1,476	1,598	1,685
TOTAL	3,400	1,657	1,809	1,979	2,193	2,473	2,715	2,987	3,207	3,469	3,659	3,762

### HIGH SCHOOL BOUNDARY RECOMMENDATION IMPACT

#### High School Logistics:

- In the 2027-28 School Year the 377 High School campus will open with 9<sup>th</sup> & 10<sup>th</sup> Graders. (There is a potential to accommodate a Junior Class Option)
- The 377 High School campus will open in the middle of a UIL Alignment period – Additional details will be made available on the District’s website at a later date.
- The Graduation Year impact be discussed at the conclusion of this presentation
- By these projections, the district can reach the 2032/33 school year before exceeding the High School building capacity at the 377 campus and the 2035/36 before approaching the building capacity at the Canyon Falls High School campus

771

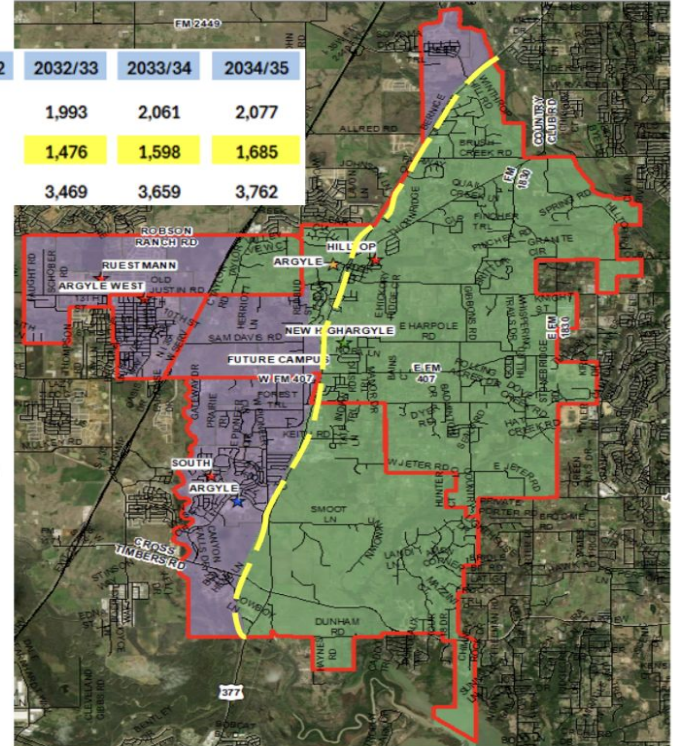
This is a 9-12 Enrollment number, but in reality, it will only be 9-10 this year and possibly an 11<sup>th</sup>-grade option. CF will keep all seniors and all or partial juniors.

894

This is a 9-12 Enrollment number, but in reality, it will only be 9-11 this year and possibly have a partial senior class if the 11<sup>th</sup>-grade option is available during the opening year. CF will have more seniors depending on the 11<sup>th</sup>-grade option from the year before.

- CANYON FALLS HIGH SCHOOL
- HIGHWAY 377 HIGH SCHOOL

Demonstrates Hwy 377 & Most of the Railroad Tracks



## Board Discussion & Decision Points:

- Consider & discuss community feedback regarding the zoning recommendation from November 18, 2024
- Consider & discuss the recommendation **as is** from November 18, 2024
- Consider & discuss any adjustments to the recommendation

