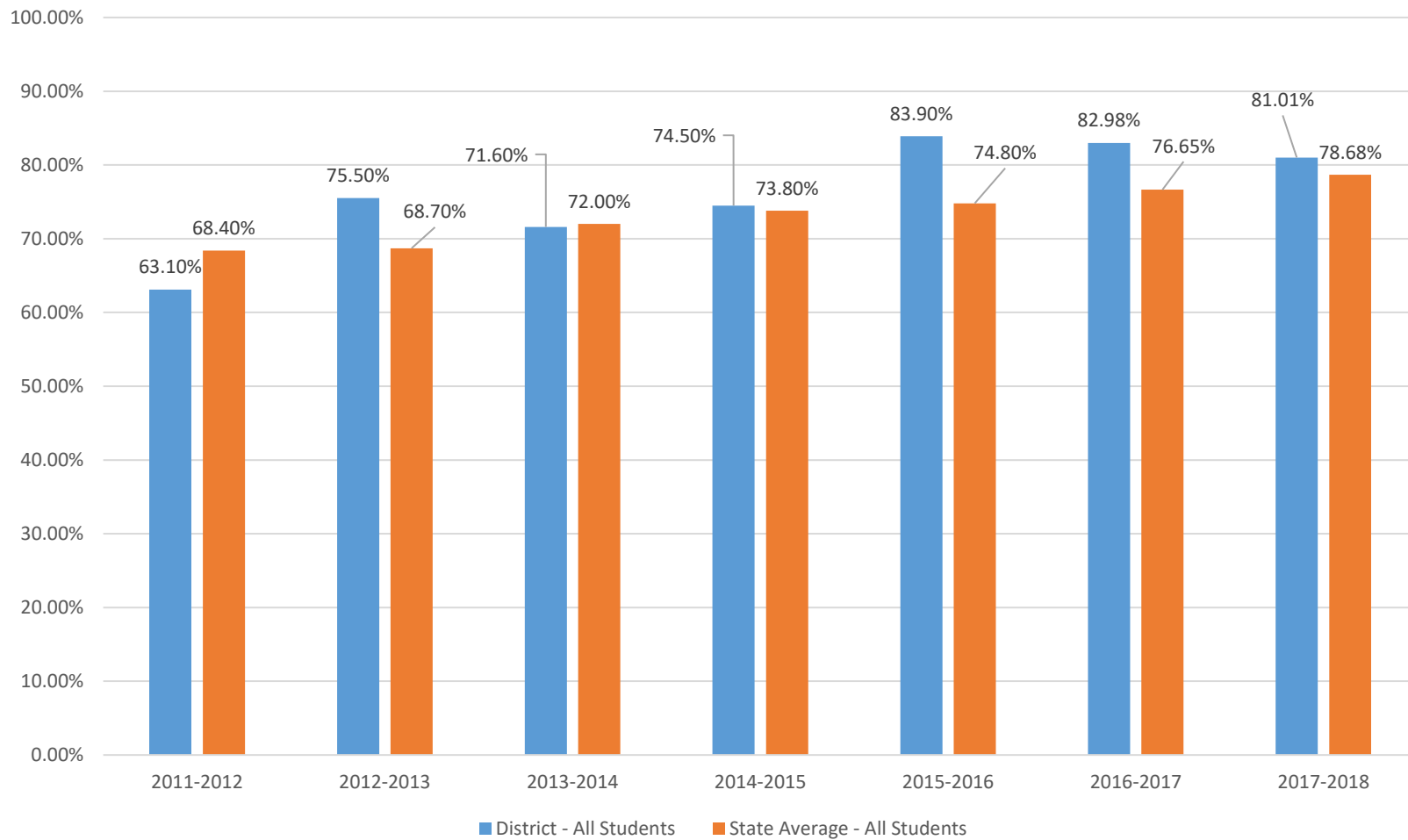
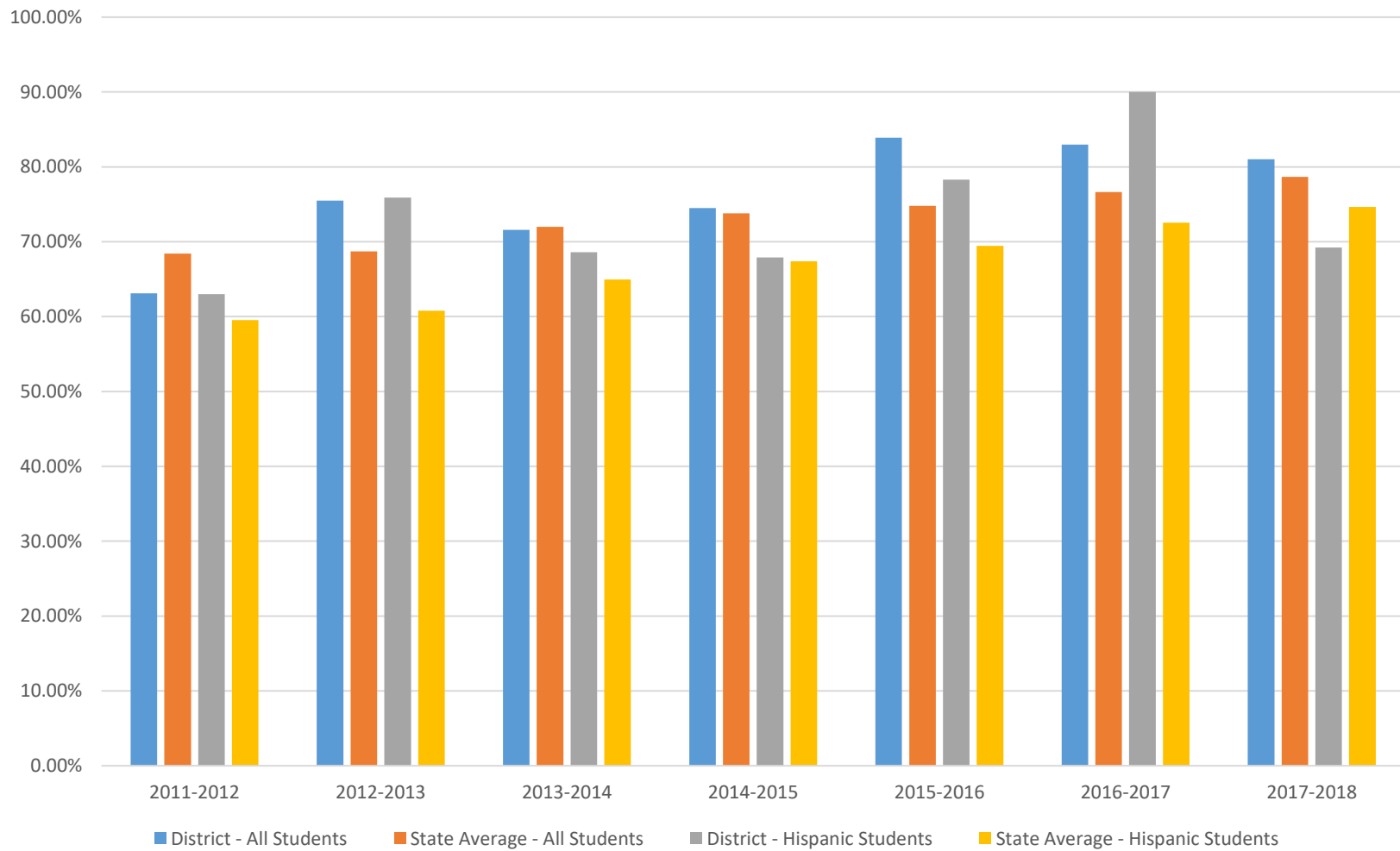


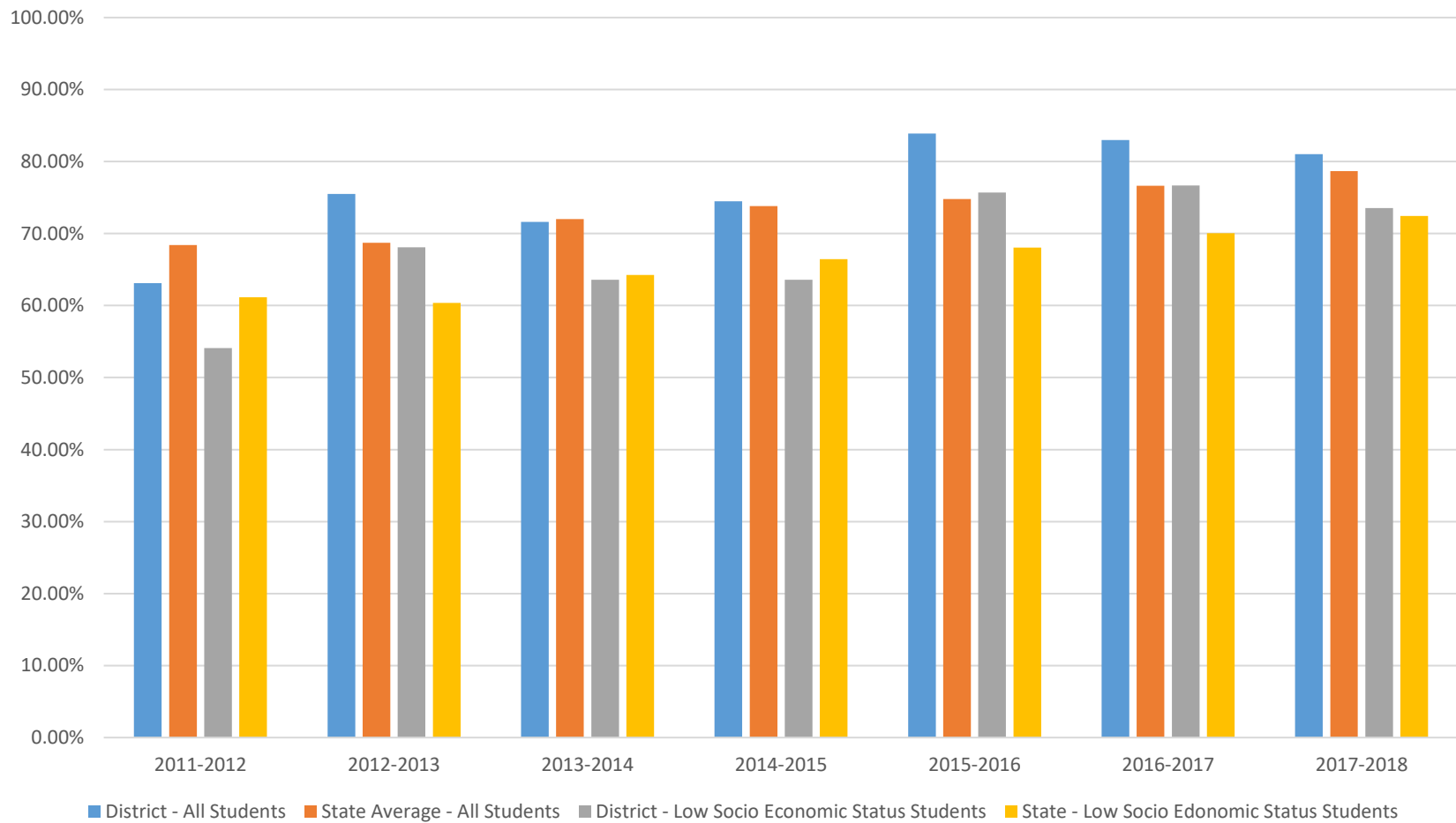
## Overall Graduation Rates



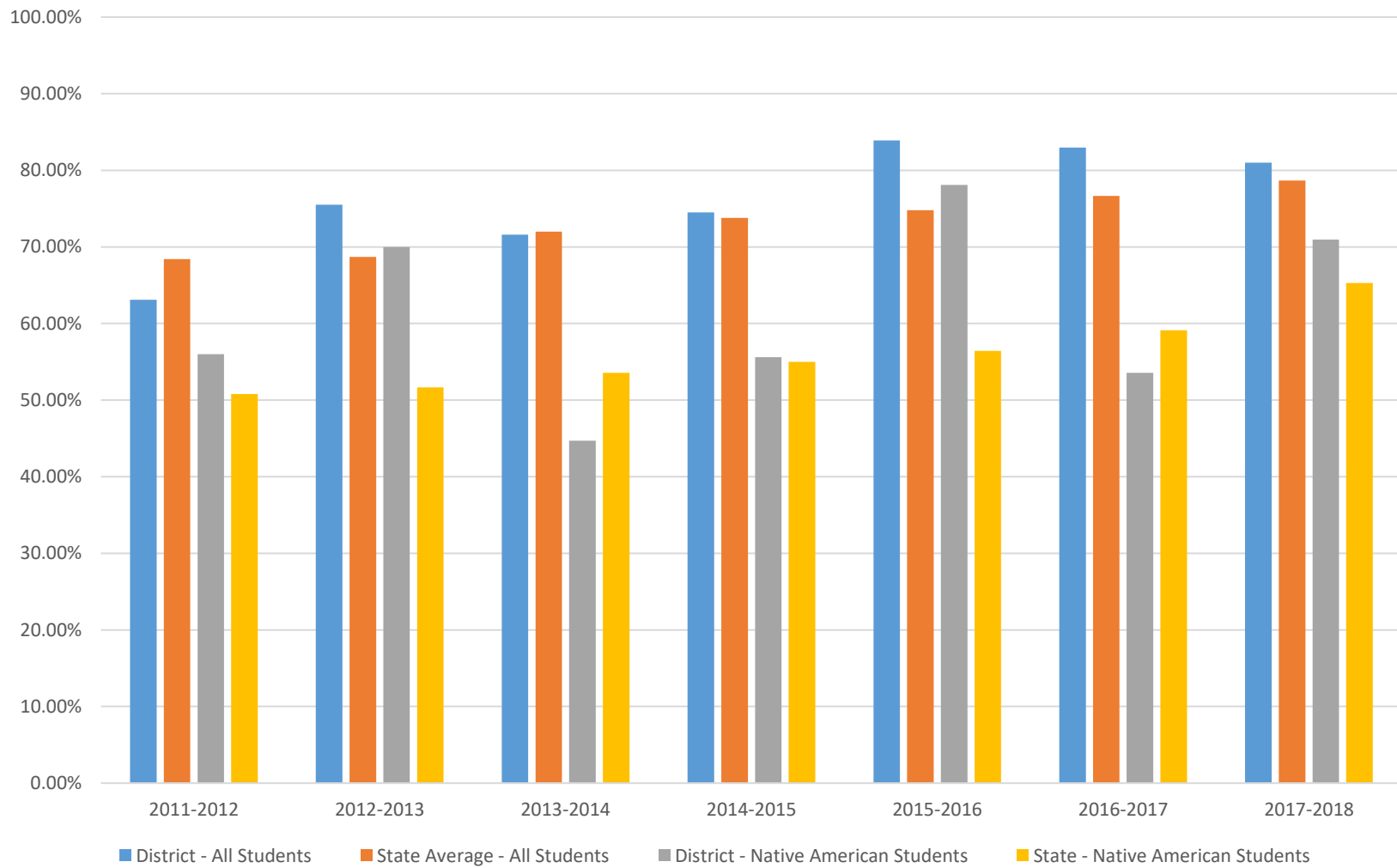
Hispanic Student Graduation Trends



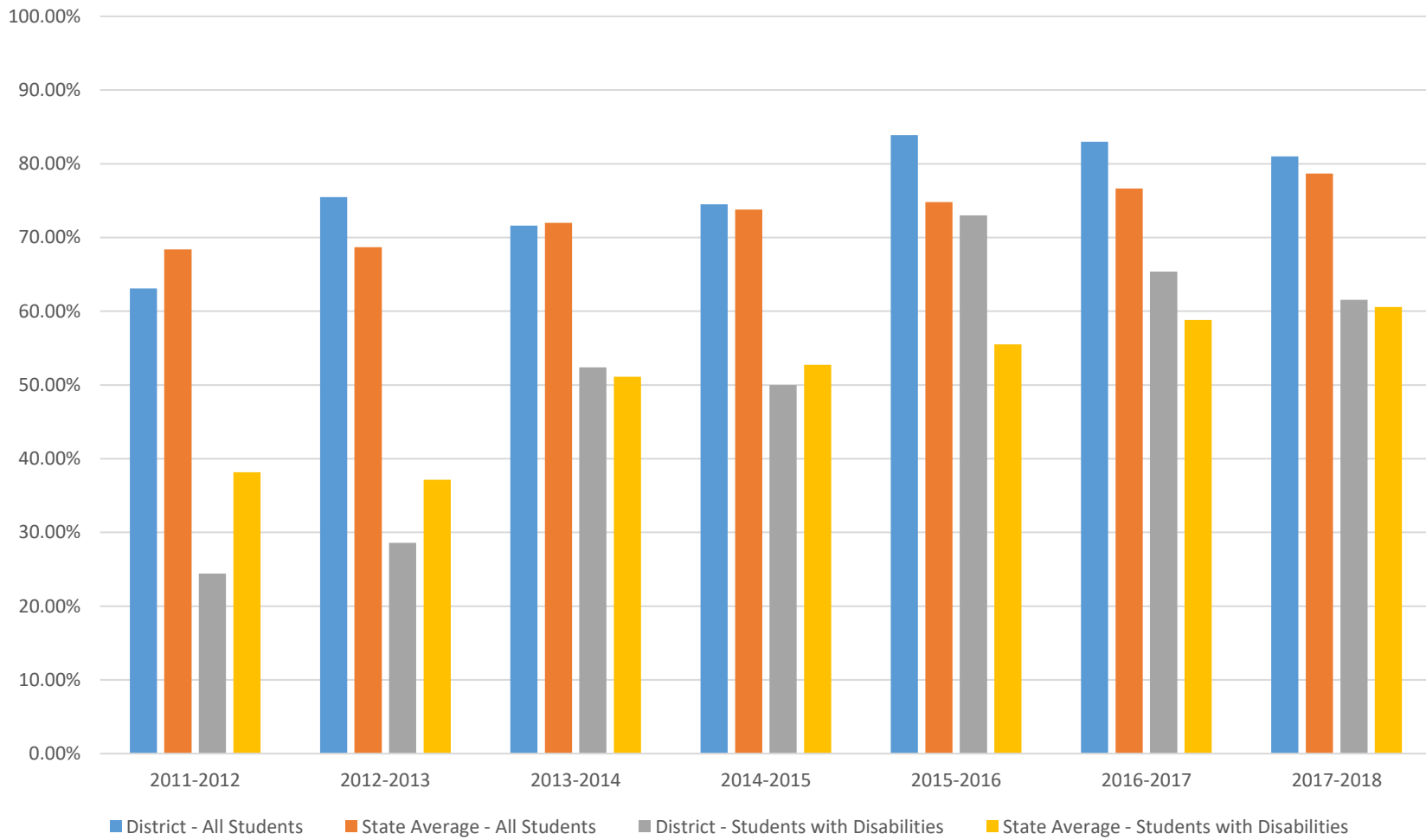
## Low Socio-Economical Status Student Graduation Trends



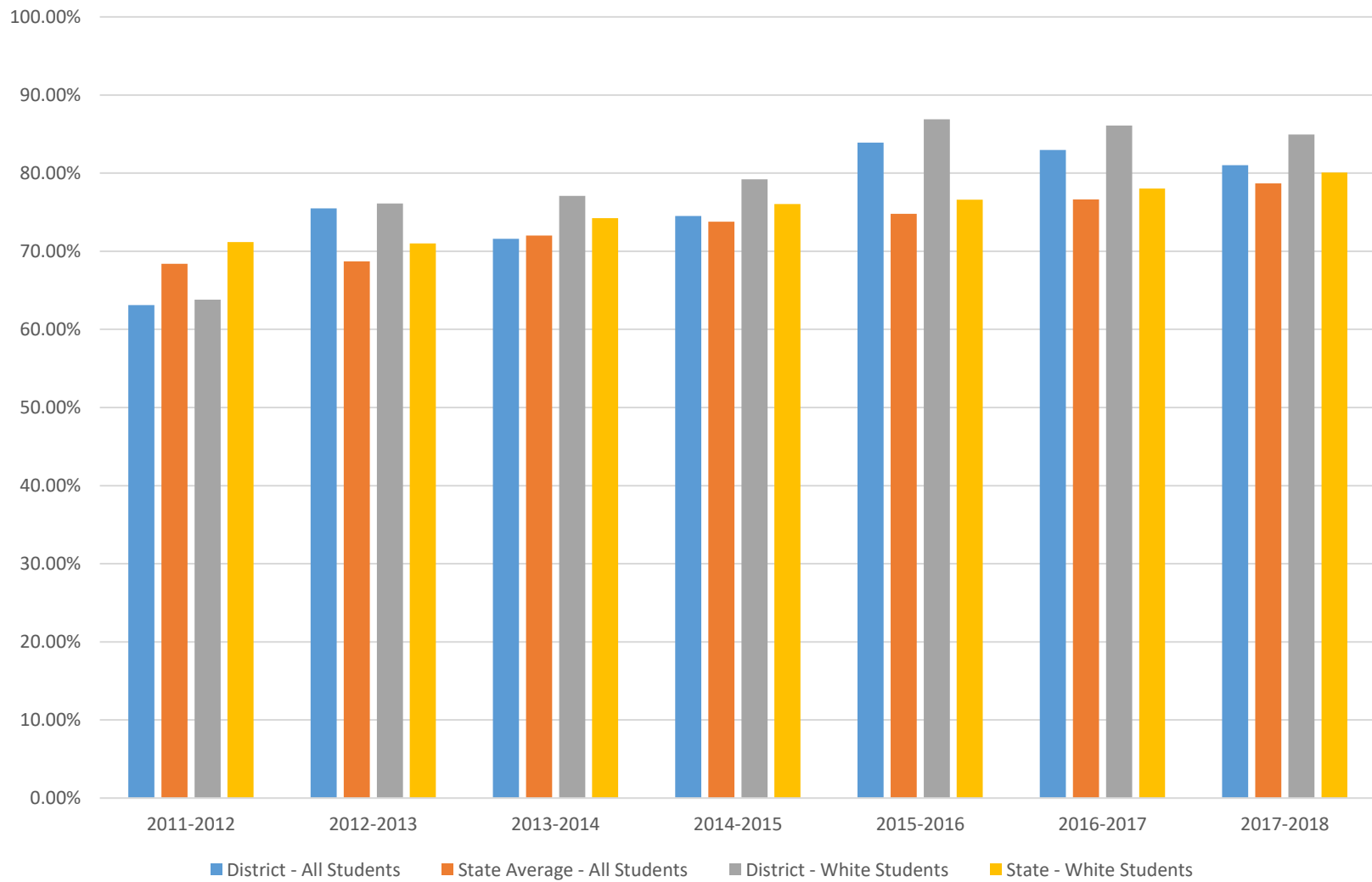
## Native American Student Graduation Trends

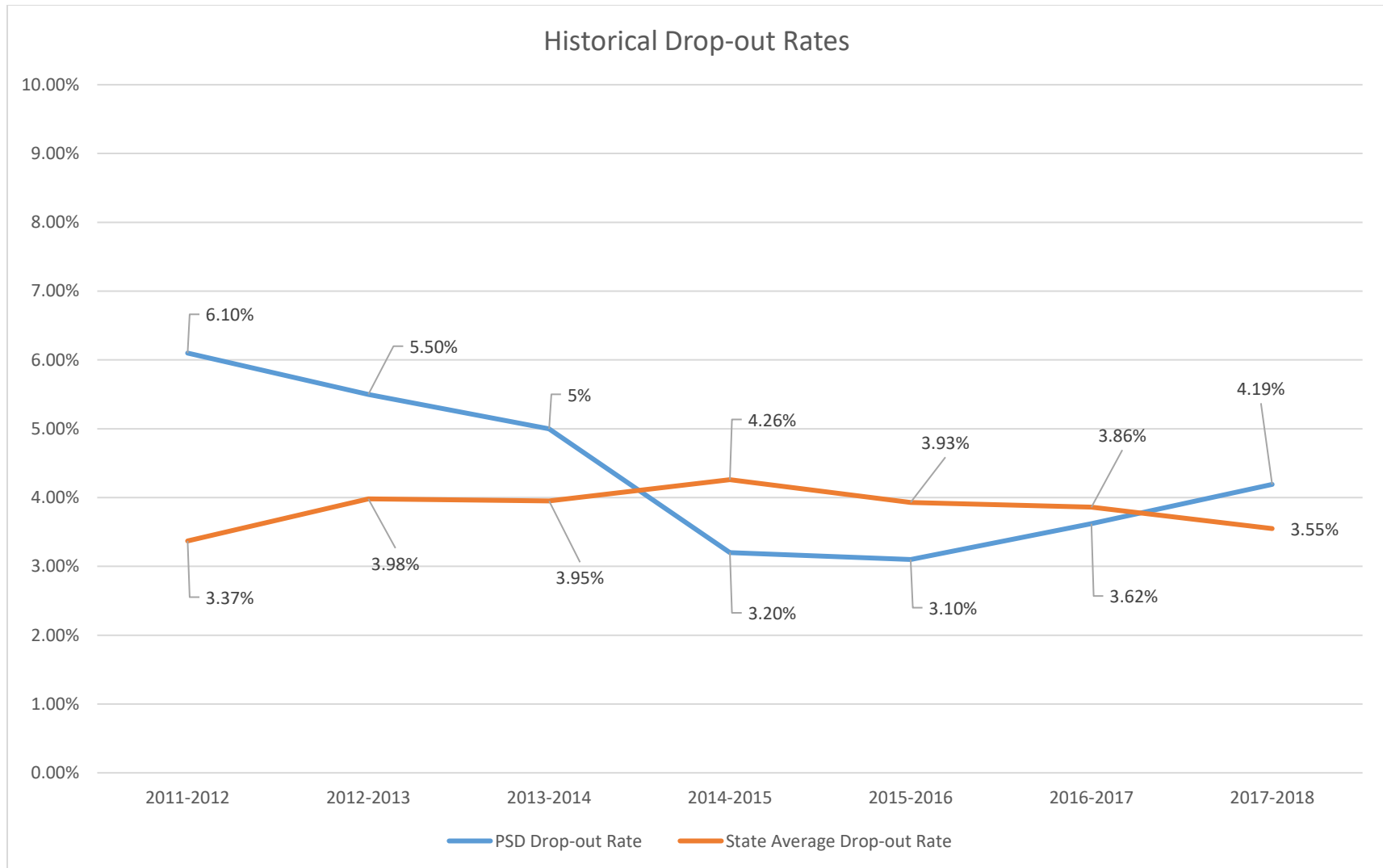


Students with Disabilities Graduation Trends

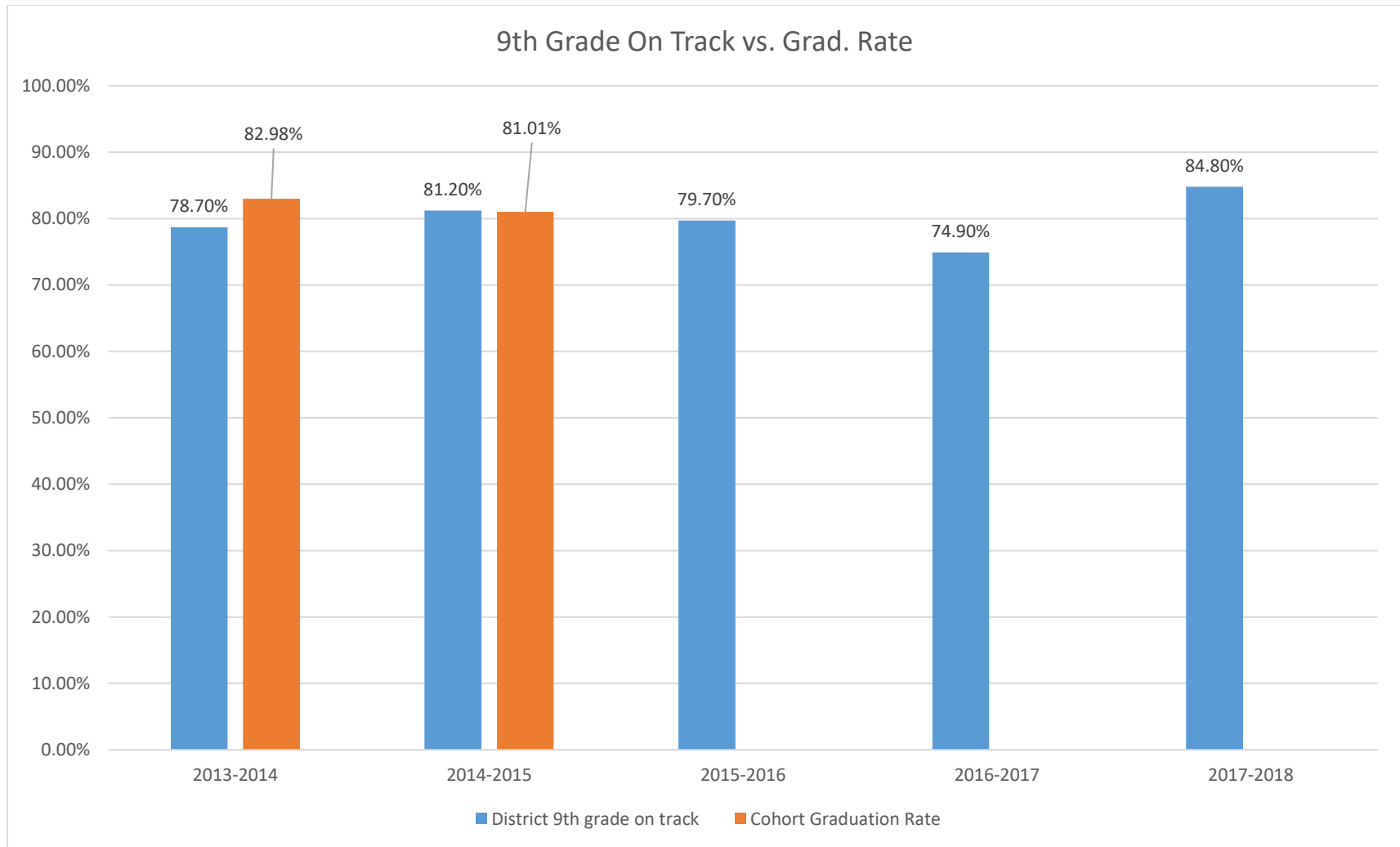


## White Students Graduation Trends





\*These rates are for the 4-year cohort, some of these students end up being a “5-year completer”



\*The state has found a direct correlation between the number of credits earned by a 9<sup>th</sup> grade student and their likelihood of graduating “on-time”.

\*\*Cohort graduation rates for 9<sup>th</sup> graders from 2015-2016 school year and beyond are yet to be determined.