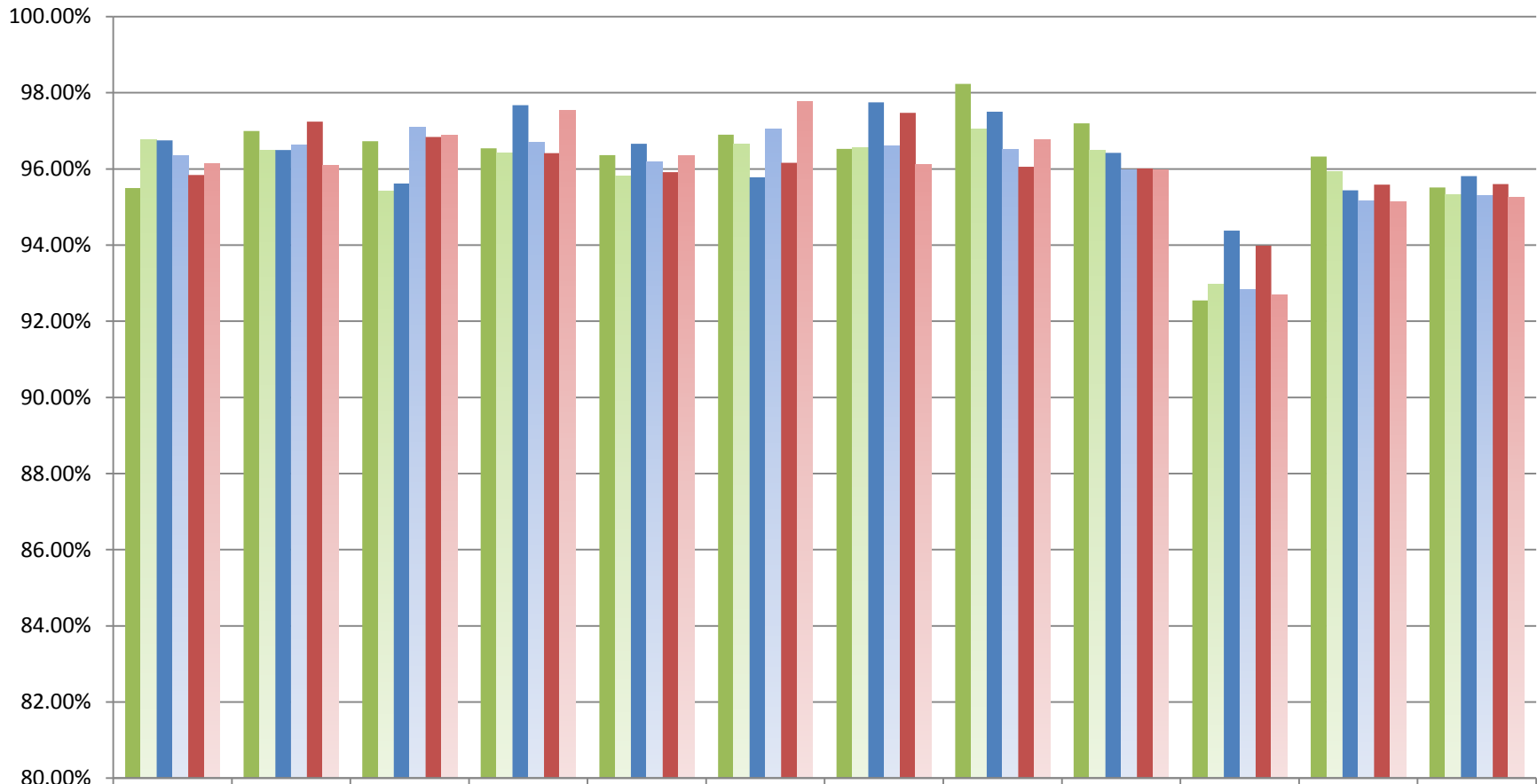


Month 1 & Month 2 ADA Comparison for Years 2013-14, 2014-15 and 2015-16 (this chart does not include any Self Contained SPED students)



	Carver	Joyner	Lawhon	Lawndale	Milam	Parkway	Pierce	Rankin	Thomas	THS	TMS	District
M1 13-14	95.50%	97.00%	96.73%	96.54%	96.37%	96.90%	96.52%	98.23%	97.19%	92.55%	96.33%	95.51%
M2 13-14	96.76%	96.49%	95.42%	96.41%	95.81%	96.65%	96.56%	97.06%	96.50%	92.98%	95.92%	95.33%
M1 14-15	96.75%	96.49%	95.62%	97.68%	96.66%	95.78%	97.75%	97.51%	96.42%	94.38%	95.44%	95.81%
M2 14-15	96.35%	96.62%	97.08%	96.70%	96.18%	97.05%	96.60%	96.51%	95.98%	92.84%	95.17%	95.29%
M1 15-16	95.84%	97.24%	96.84%	96.41%	95.92%	96.16%	97.47%	96.06%	96.01%	93.98%	95.59%	95.60%
M2 15-16	96.13%	96.10%	96.89%	97.53%	96.36%	97.76%	96.11%	96.77%	95.98%	92.69%	95.14%	95.26%