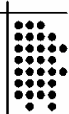


PEREIRA ENGINEERING

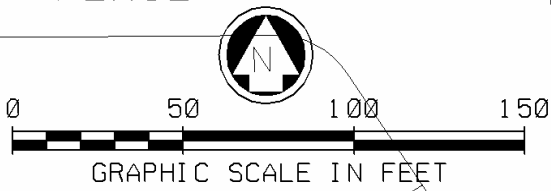
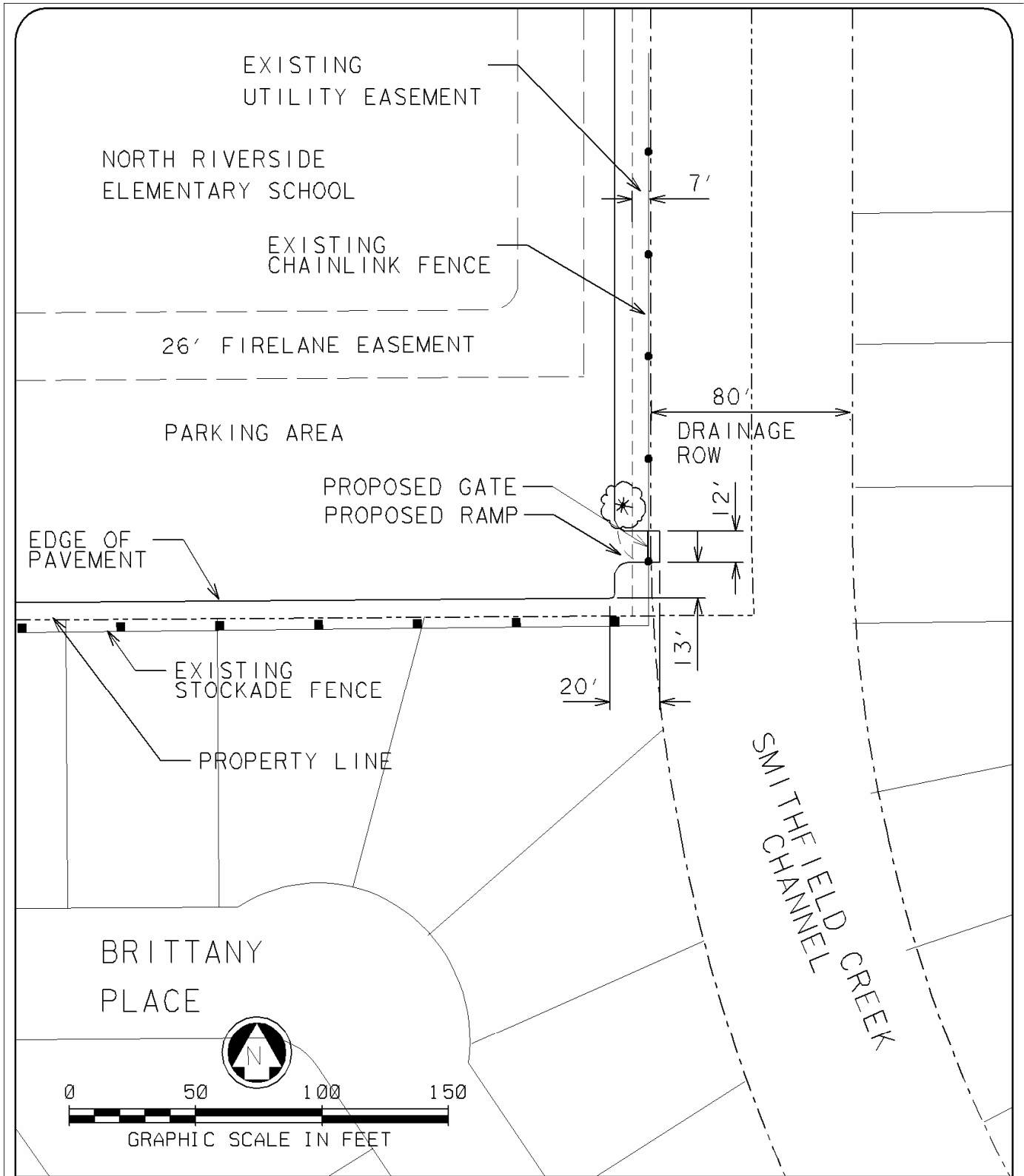
Civil Engineering & Technical Services  
P.O. Box 151252 • Fort Worth, Texas 76108 • 817-596-5808



**CITY OF FORT WORTH**  
**CONTRACT E – MISCELLANEOUS STRUCTURAL IMPROVEMENTS**  
**2004 CIP MINOR DRAINAGE PROJECTS**

PROPOSED IMPROVEMENTS FOR THE SMITHFIELD CREEK CHANNEL AT NORTH RIVERSIDE ELEMENTARY SCHOOL

9. 1. 05



**PEREIRA ENGINEERING**  
*Civil Engineering & Technical Services*  
 P.O. Box 151252 • Fort Worth, Texas 76108 • 817-596-5808

**CITY OF FORT WORTH**  
 CONTRACT E – MISCELLANEOUS STRUCTURAL IMPROVEMENTS  
 2004 CIP MINOR DRAINAGE PROJECTS

**DETAIL OF RAMP LOCATION**  
 9.1.05



*Southeast corner of the North Riverside Elementary School Parking Lot  
Photograph shows approximate location of proposed access ramp and gate.*



*Closeup of southeast corner of the North Riverside Elementary School Parking Lot*