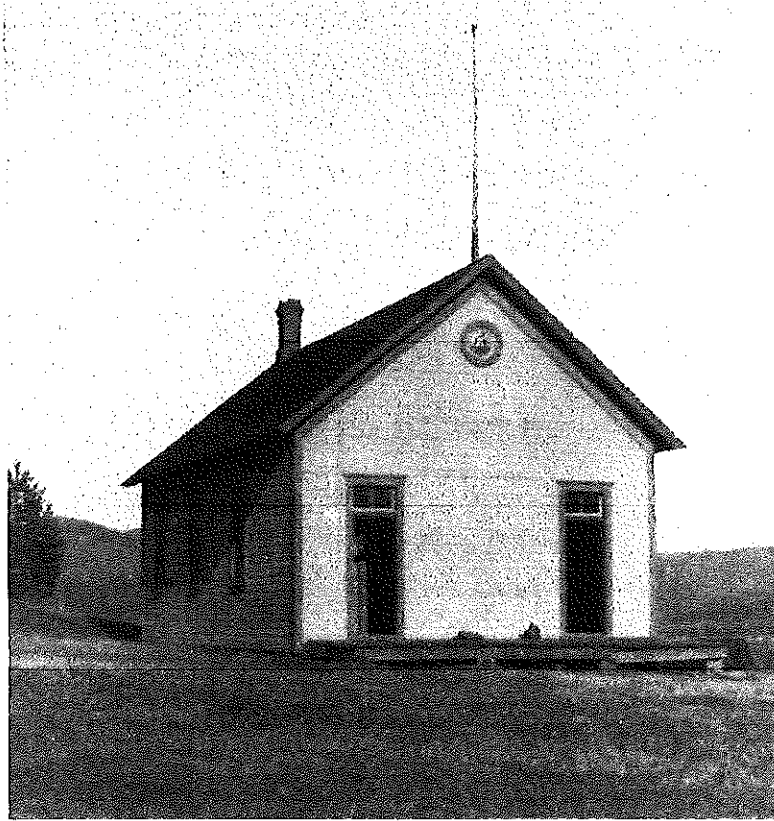


Pleasant Valley School

District #25



(Photo courtesy of GCHS)

The Pleasant Valley School (District 25) was organized in 1857, with the building being erected in 1892 on the corner of a one-acre plot near the Lewis Orchard. It was located on the south side of the marsh of Simmons Creek, which flows through Lidberg Pond, and along the old military road between Wacouta and Frontenac. The foundation and well are still visible and the perennial flowers, planted many years ago near the school, still bloom every summer.

In 1894 Miss Josephine Roberts taught at District 25 with Stella VanGuilder teaching in 1917, Jean Masterson in 1919 and Mrs. H. Masterson teaching from 1920-1921. Harriet Jansen taught in 1922, Eleanor Oelkers from 1935-1938, Grace Kuhl from 1939-1940, Joyce Carlson in 1941, Mariagne Anderson in 1942, Mrs. Kells from 1943-1947, and Margaren Isensee from 1948-1949. Evelyn Wendler Nelson did her practice teaching here with Mamie (Magne) Peterson Snow. The school closed in 1950.

(History of Goodhue County Rural Schools courtesy of GCHS)