



# Duluth Public Schools/ Duluth Head Start



---

Serving preschool children and their families  
in Duluth for over 50 years

# Mission

- The mission of Duluth Head Start is to serve income eligible preschool children and their families. These services include opportunities to enhance social and cognitive skills, increase health and wellness and build upon family strengths.

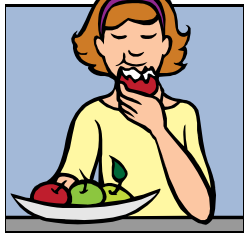
# Locations

- Barnes Early Childhood Center (2)
- Homecroft Elementary School (2)
- Laura MacArthur Elementary School (3)
- Lester Park Elementary School (1)
- Myers-Wilkins Elementary School (3)
- Piedmont Elementary School (3)
- Stowe Elementary School (2)
- Spirit Valley YWCA Childcare Center (EHS and Pre-k)
- Washington Center (EHS and Pre-K)
- Barnes Early Childhood Center Home Base (Pre-k)

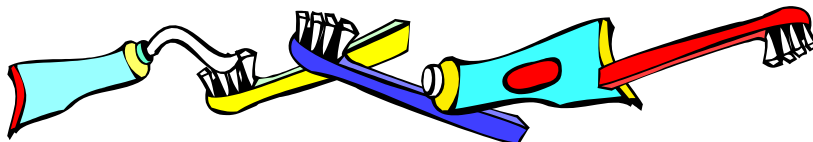
# Funding Sources

- Federal grants fund our collaborative classrooms throughout the city serving 3 and 4 year olds
- State School Readiness and Voluntary Pre-K money is part of our collaboration
- State funded Early Learning Scholarships and Title I funds help support our classrooms
- State grants fund our collaboration with the YWCA Childcare Center, Families in Transition serving families experiencing homelessness and a Home Based option

# Comprehensive Services



- Health
- Nutrition
- Education
- Mental Health
- Disabilities
- Family Advocacy
- Parent Engagement



# Eligibility

- 2018 POVERTY GUIDELINES FOR THE 48 CONTIGUOUS STATES AND THE DISTRICT OF COLUMBIA

• Persons in family/household	Poverty guideline
• 1	\$12,140.
• 2	\$16,460.
• 3	\$20,780.
• 4	\$25,100.
• 5	\$29,420.
• 6	\$33,740.
• 7	\$38,060.
• 8	\$42,380.

- For families/households with more than 8 persons, add \$4,320. for each additional person.

# Enrollment Requirements

- Head Start enrollment is quick ,easy and confidential.
- Parents provide proof of income, copies of dental and physical exams and immunizations.
- Head Start staff will assist parents with finding a family doctor and dentist.

# Curriculum



- Opening the World of Learning-A literacy rich curriculum used in all Federal Head Start classrooms.
- State program options use Creative Curriculum and PITC.
- Second Step-Supports social-emotional growth by helping children identify and manage feelings, learn to be with others and solve problems.
- Pyramid Model of Social Emotional support is being widely used in our classrooms.
- Strategies from SEEDS of Early Literacy and Action Based Learning (connecting, brain, movement & learning) are embedded into the day.





# Screening & Assessment

- **Social Emotional Screening**: during initial home visit
- **Health & Developmental Screening**: within first 45 days of enrollment
- **On-going assessment** : through various means; documented observation, child interview, direct assessment, parent input, work samples
- **Outcomes**: are reported 3 times/year
- **Curriculum is individualized** : (increasing or modifying the degree of challenge, or adapting the environment) accordingly to make the Early Head Start and Head Start programs relevant and meaningful for every child.

# Parent Engagement

- Home Visits
- Conferences
- Policy Council
- Parent/Family Events
- Community Involvement
- Ensuring regular attendance
- Supporting healthy child development



## For more information:

- Duluth Head Start  
2102 N. Blackman Ave.  
Duluth, MN 55811  
Phone: 218-336-8815  
Fax: 218-336-8819



- Online @ [www.ISD709.org](http://www.ISD709.org)