



Manor Independent School District



# Addressing Future Growth

## Northeast

December 16, 2024



# Elementary Enrollment Projections



Campus	Capacity	2024/25	2025/26	2026/27	2027/28	2028/29	2029/30	2030/31	2031/32	2032/33	2033/34	2034/35
BLAKE MANOR ELEMENTARY	800	572	585	571	576	577	603	633	657	727	801	878
BLUEBONNET TRAIL ELEMENTARY	750	556	603	650	700	773	851	914	969	1,023	1,059	1,096
DECKER ELEMENTARY	550	366	374	378	417	439	484	537	591	645	690	714
LAGOS ELEMENTARY	700	636	670	698	822	931	1,067	1,254	1,449	1,662	1,774	1,882
OAK MEADOWS ELEMENTARY	670	480	470	479	505	529	553	575	589	601	594	589
PIONEER CROSSING ELEMENTARY	650	508	563	550	557	587	593	624	649	671	685	698
PRESIDENTIAL MEADOWS ELEMENTARY	775	571	623	680	760	822	838	868	889	905	916	932
SHADOW GLEN ELEMENTARY	670	641	635	662	745	824	913	960	987	1,019	1,034	1,048
NEW K-8 CAMPUS (KG - 5th)	550	258	365	392	409	410	402	402	402	402	402	402
NEW K-8 CAMPUS (6th-8th)	300	175	266	266	266	266	266	266	266	266	266	266
<b>ELEMENTARY TOTALS</b>	<b>7,539</b>	<b>4,588</b>	<b>4,889</b>	<b>5,061</b>	<b>5,491</b>	<b>5,893</b>	<b>6,305</b>	<b>6,768</b>	<b>7,182</b>	<b>7,656</b>	<b>7,955</b>	<b>8,238</b>

Demographer report: December 10, 2024





# District Housing Overview by Elementary Zone



Elementary	Annual Starts	Quarter Starts	Annual Closings	Quarter Closings	Under Const.	Inventory	VDL	Futures
BLAKE MANOR	0	0	0	0	0	0	0	808
BLUEBONNET TRAIL	74	12	75	18	77	119	77	1,797
DECKER	0	0	0	0	0	0	0	1,300
LAGOS	139	42	170	29	82	93	332	7,202
OAK MEADOWS	2	0	19	3	1	15	151	119
PIONEER CROSSING	88	42	305	67	65	77	46	1
PRESIDENTIAL MEADOWS	311	65	361	88	97	163	367	675
SHADOW GLEN	131	8	226	70	18	68	285	2,811
<b>Grand Total</b>	<b>745</b>	<b>169</b>	<b>1,156</b>	<b>275</b>	<b>340</b>	<b>535</b>	<b>1,258</b>	<b>14,713</b>

- Highest activity in the category
- Second highest activity in the category
- Third highest activity in the category

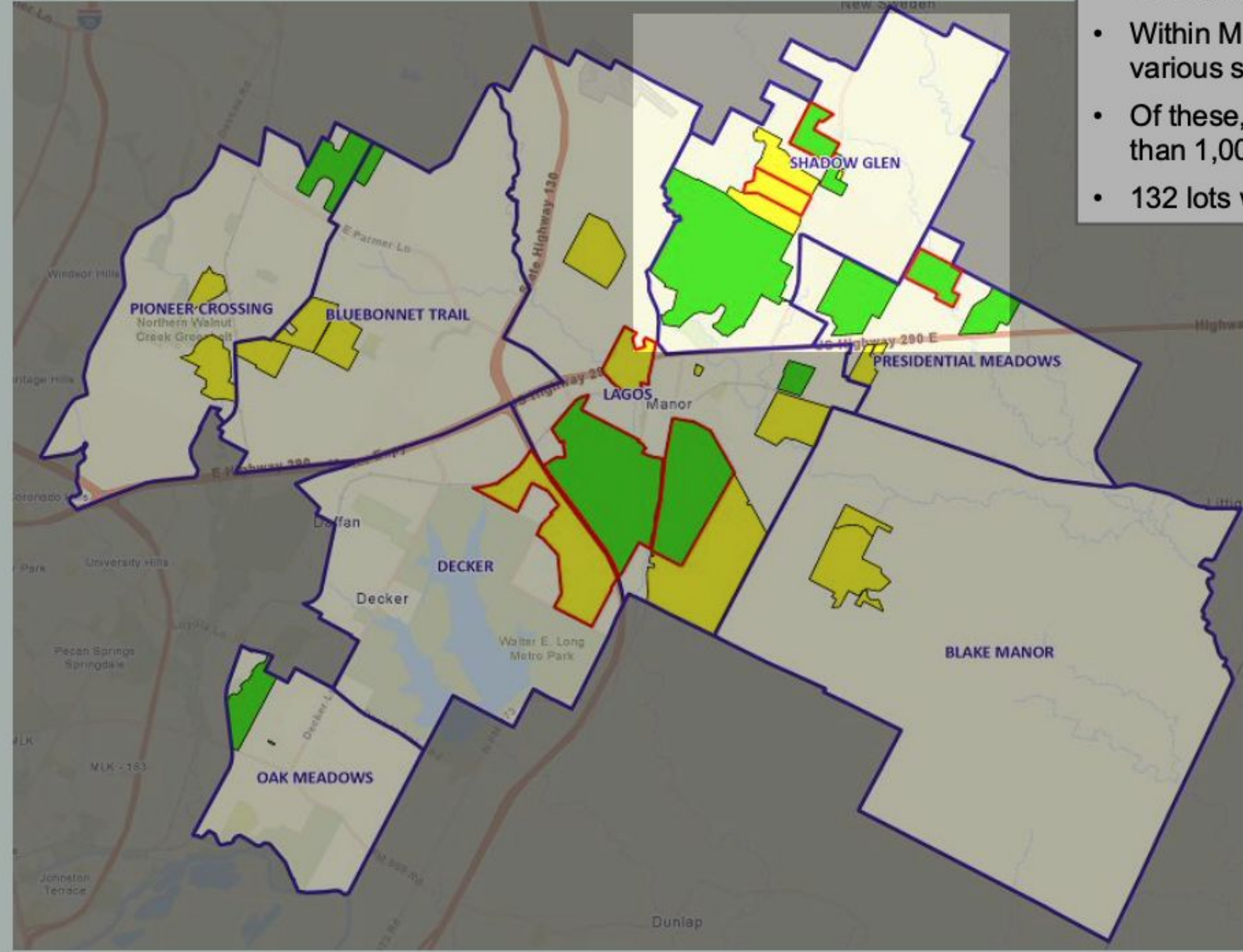




# District Housing Overview



- The district has 11 actively building subdivisions
- Within MISD there are 23 future subdivisions in various stages of planning
- Of these, groundwork is underway on more than 1,000 lots within 7 subdivisions
- 132 lots were delivered in the 2<sup>nd</sup> quarter



- Groundwork Underway
- Active
- Future
- Elementary Attendance Zones





# Campus Utilization Rates

Capacity Utilization Rate



Campus	Capacity	Enrollment	Capacity Utilization Rate	Projected Enrollment	Capacity Utilization Rate
	Administration (Shared with Board in Nov 2023)	as of: 12/5/24		2025 School Year	
Presidential Meadows Elementary	775	578	75%	614	79%
Shadow Glen Elementary	670	637	95%	628	94%
Manor Rise Academy	850	510	60%	630	74%

**MRA to Expand Grade Offerings, Adding 5th and 8th Grades for 2025-26 School Year**

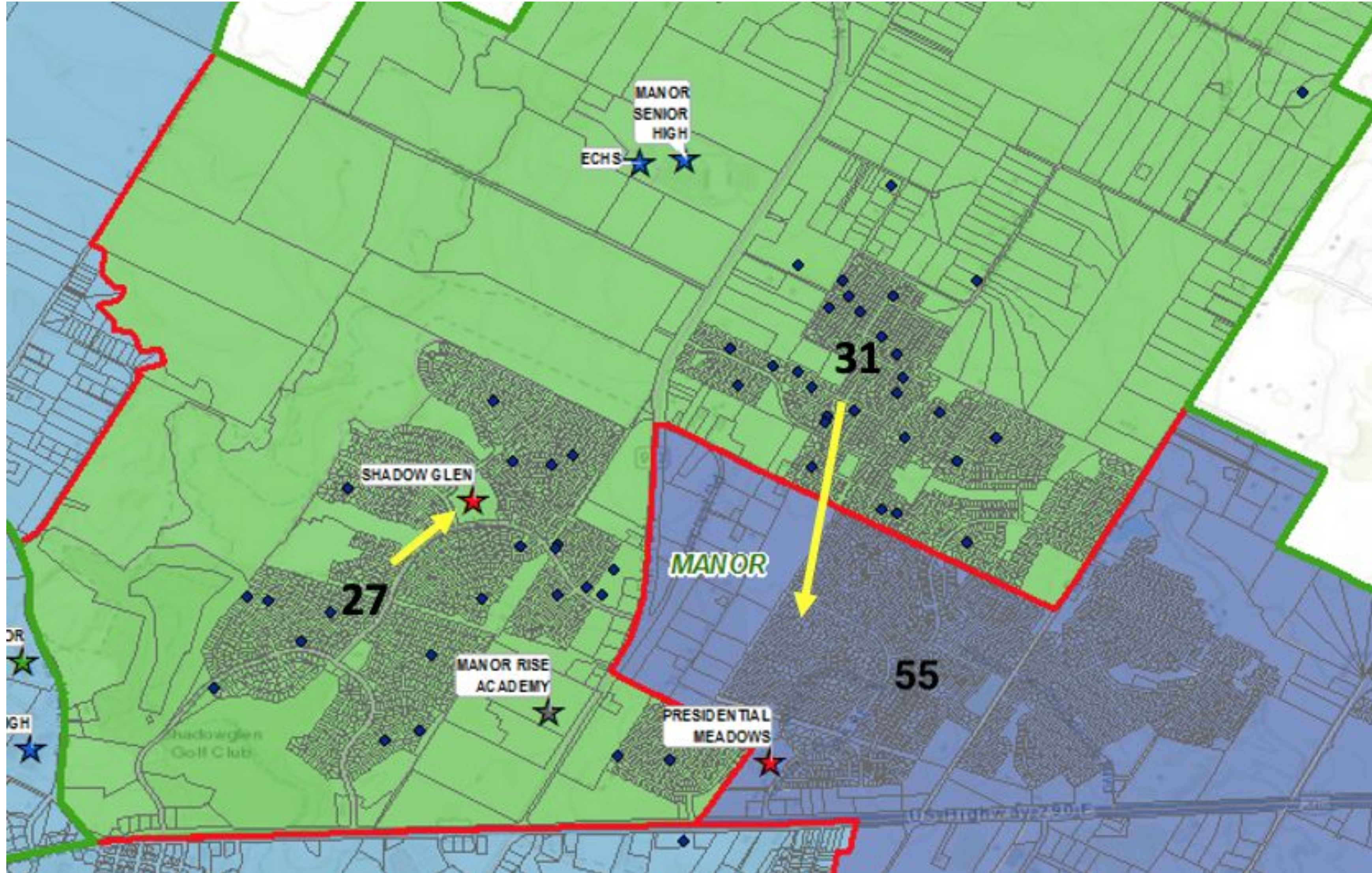
PME	EE	1
PME	PK3	1
PME	PK4	54
PME	KG	71
PME	1	91
PME	2	77
PME	3	92
PME	4	94
PME	5	97
PME	TOTAL	578

SGE	EE	4
SGE	KG	92
SGE	1	97
SGE	2	96
SGE	3	97
SGE	4	133
SGE	5	118
SGE	TOTAL	637

MRA	EE	6
MRA	PK3	0
MRA	PK4	57
MRA	KG	67
MRA	1	73
MRA	2	65
MRA	3	49
MRA	4	19
MRA	6	89
MRA	7	85
MRA	TOTAL	510



# Scenario: MRA Pre-K Transitioning to SGE and PME (Y: 2025-26)



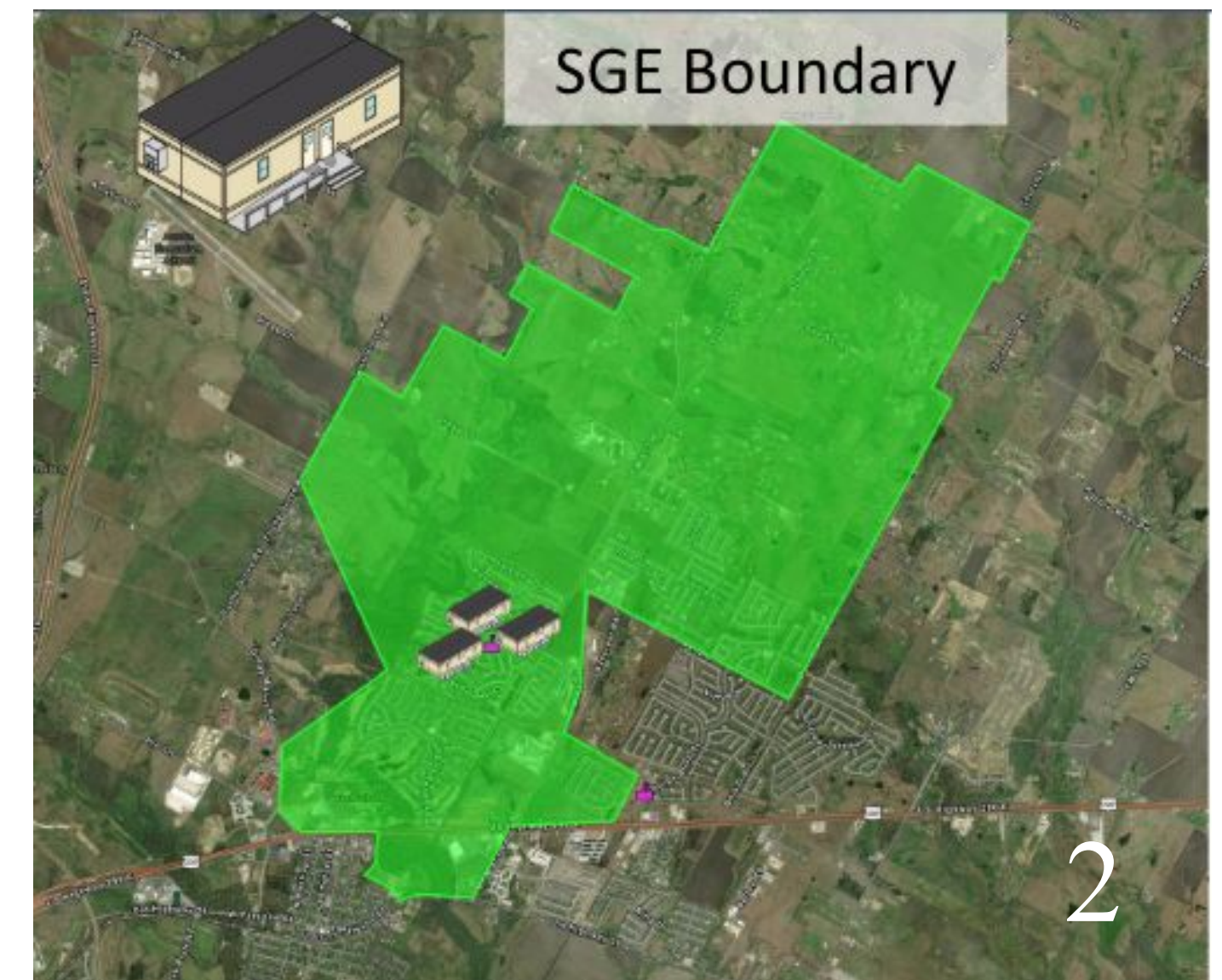


# Addressing Future Growth (SGE K-5)



## ShadowGlen Attendance Boundary

- 1: Segment SGE attendance zone(s) to PME
- 2: 2025-26 - Expand SGE capacity by bringing in portables





# Future Elementary School







Thank you!

Manor Independent School District