

September 2017

Derby Public Schools

Performance Dashboard

Derby High School

Martin Pascal, Principal

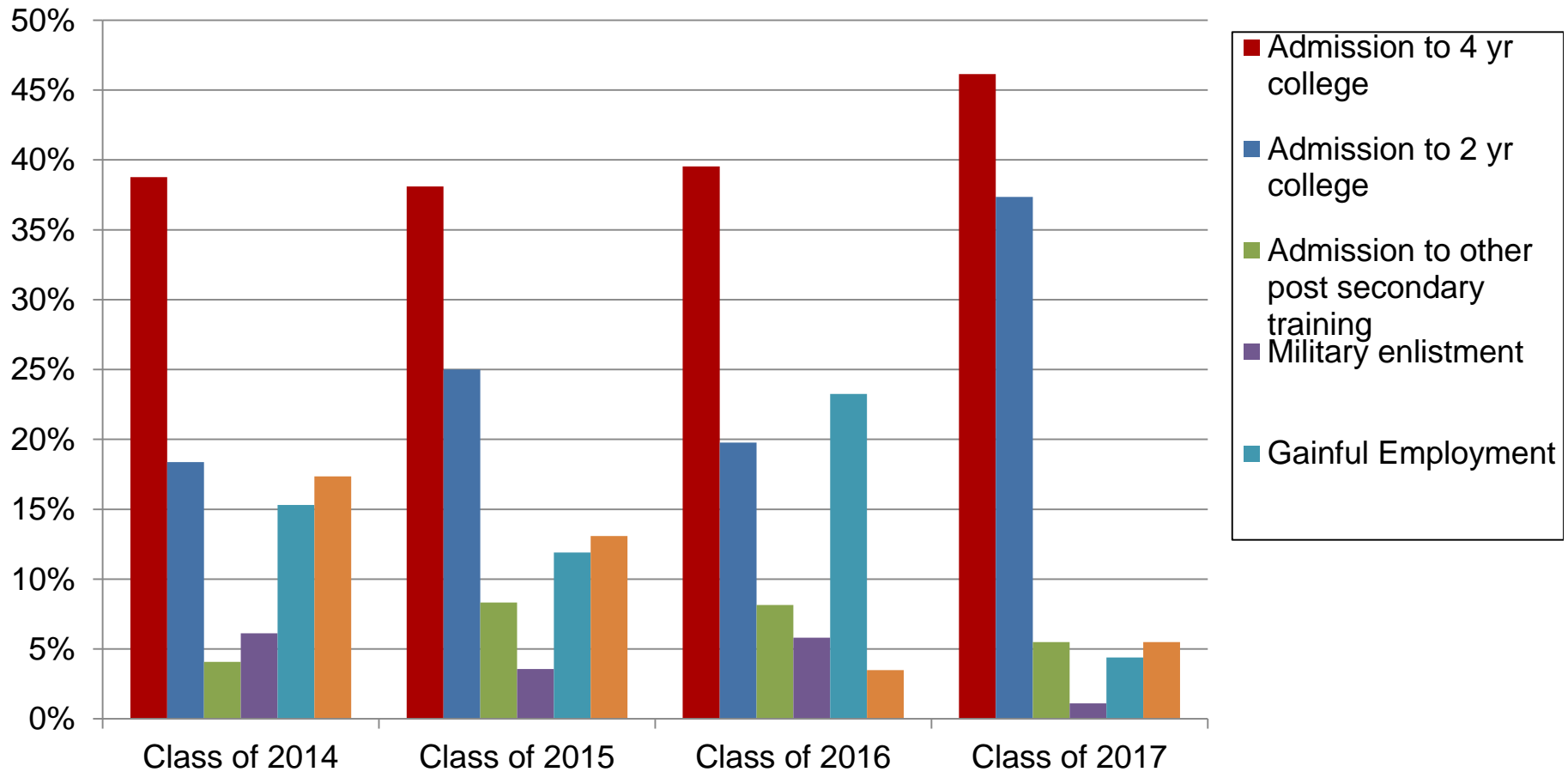
“People without information cannot act. People with information cannot help but act.”

Ken Blanchard



Post High School Plans

Percent of graduates



Information is updated in the fall following graduation

Promotion:

Percent of students promoted

	9	10	11	12
June 2017	86	84	89	97
June 2016	83	87	83	98
June, 2015	82	98	88	
June, 2014	93	91	97	

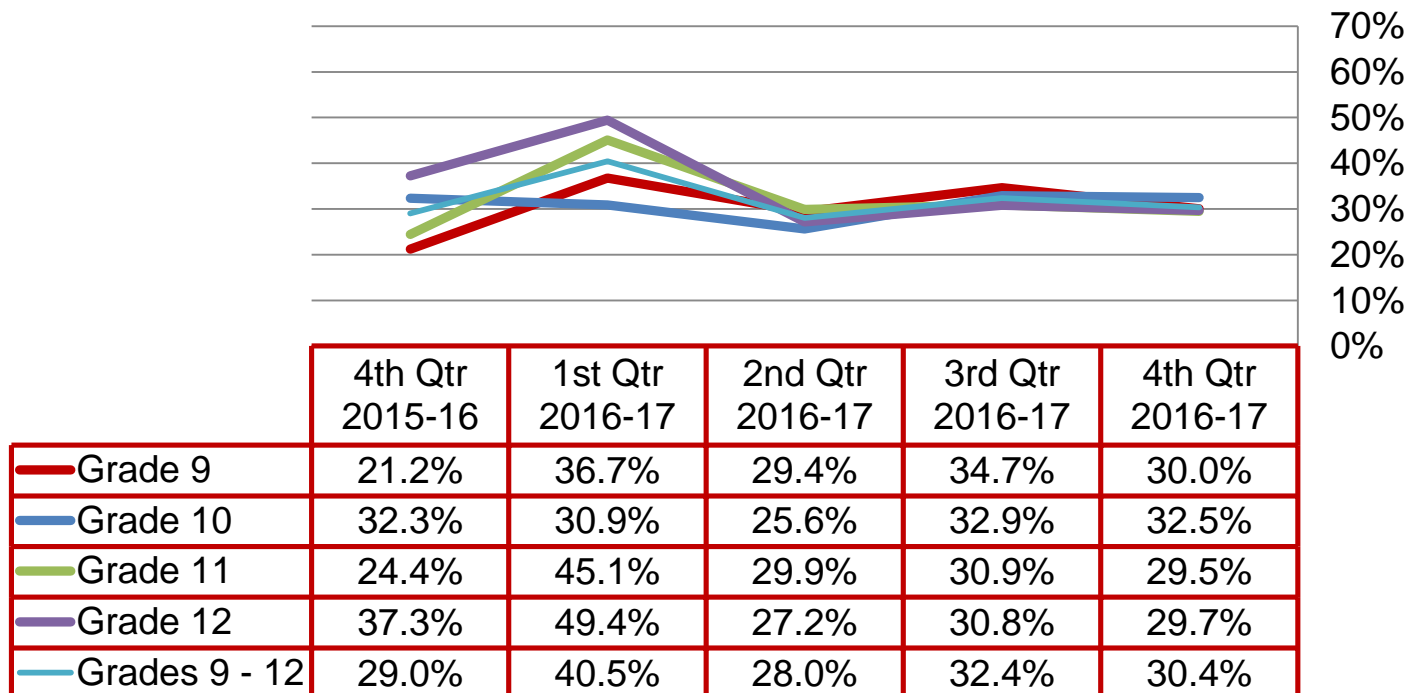
Dropout:

<u>Year</u>	<u>Annual Dropout Rate</u>
2017	1.1
2016	3.2
2015	.08
2014	1.8

Quarterly Data

High Grades

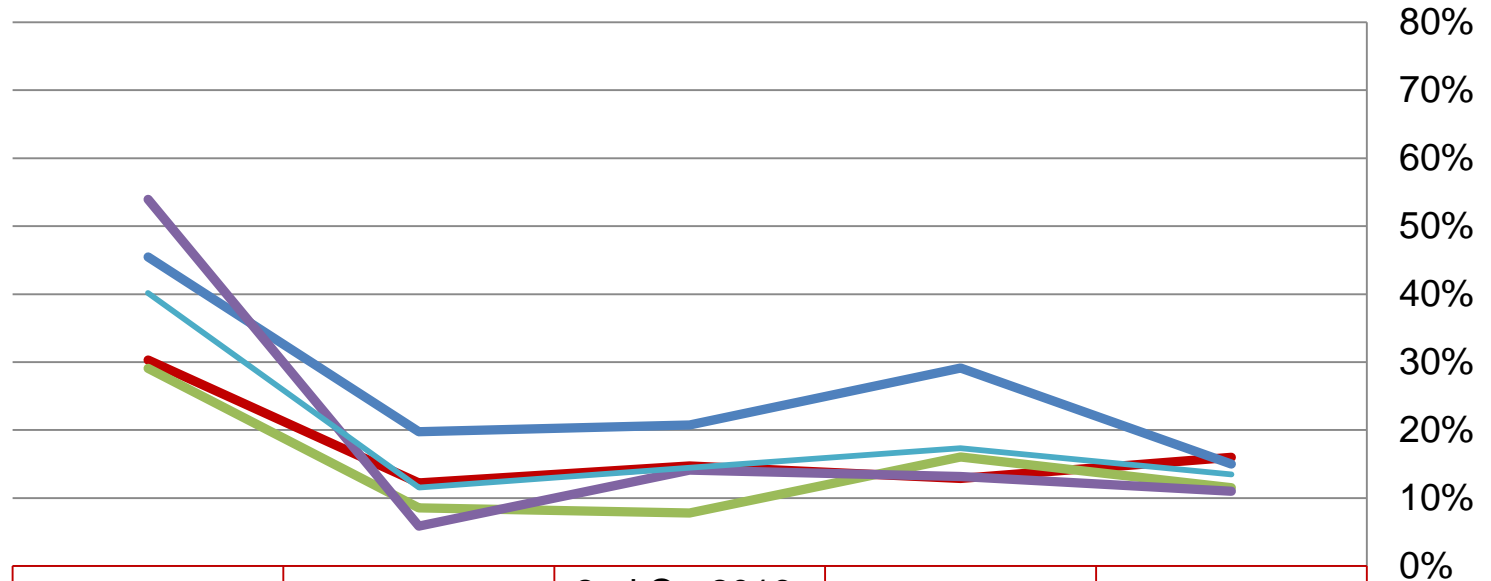
Percent of students earning 80% or above in all courses regardless of academic level:



Failing Grades

Derby High School

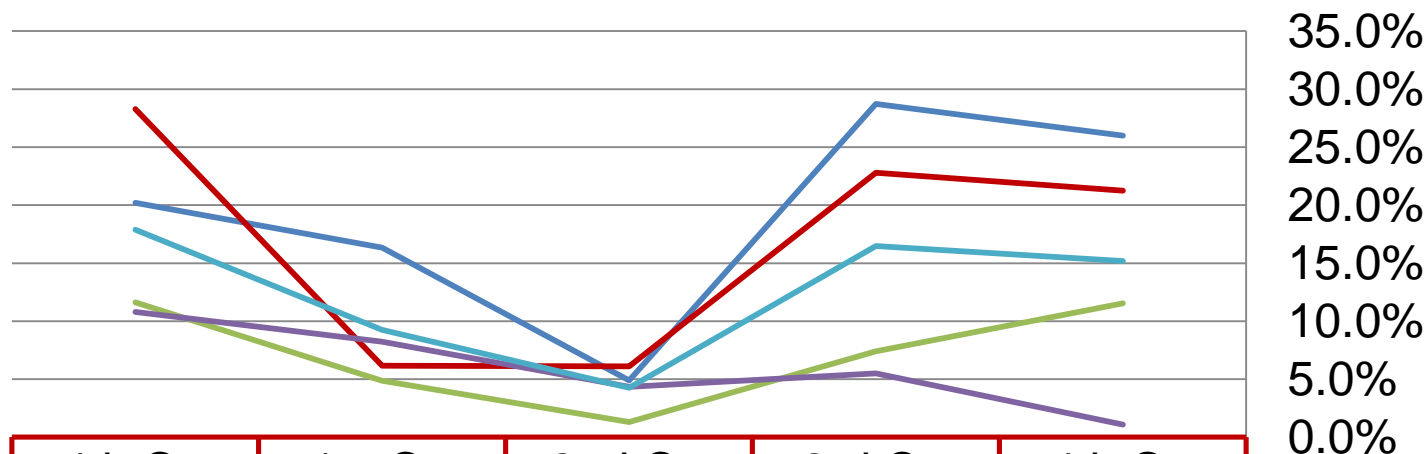
Percent of students with at least one course below a 65%:



	4th Qtr 2015-16	1st Qtr 2016-17	2nd Qtr 2016-17	3rd Qtr 2016-17	4th Qtr 2016-17
Grade 9	30.3%	12.2%	14.7%	12.9%	16.0%
Grade 10	45.5%	19.8%	20.7%	29.1%	15.0%
Grade 11	29.1%	8.5%	7.8%	16.0%	11.5%
Grade 12	53.9%	5.9%	14.1%	13.2%	11.0%
Grades 9 - 12	40.2%	11.6%	14.4%	17.3%	13.5%

Failing Grades

Percent of students with at least two courses below a 65%:



	4th Qtr 2015-16	1st Qtr 2016-17	2nd Qtr 2016-17	3rd Qtr 2016-17	4th Qtr 2016-17
— Grade 9	20.2%	16.3%	4.9%	28.7%	26.0%
— Grade 10	28.3%	6.2%	6.1%	22.8%	21.3%
— Grade 11	11.6%	4.9%	1.3%	7.4%	11.5%
— Grade 12	10.8%	8.2%	4.3%	5.5%	1.1%
— Grades 9 - 12	17.9%	9.2%	4.2%	16.5%	15.2%

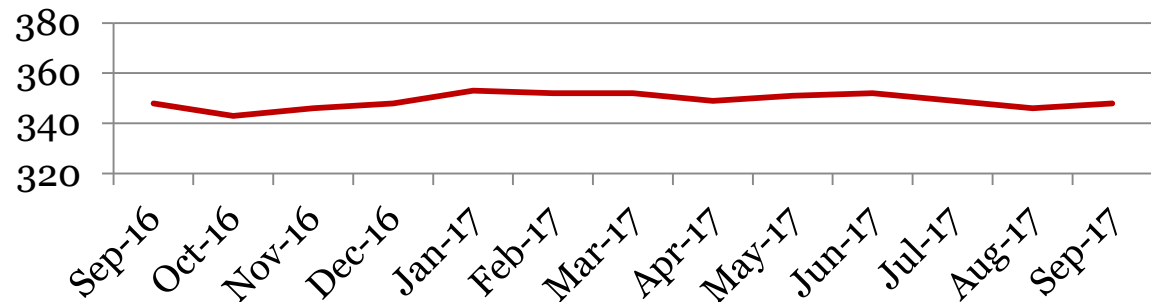
Monthly Data

Derby High School

Enrollment – 1st of the month

	9	10	11	12	Total
Sep-17	104	94	74	76	348
Aug-17	102	97	74	73	346
Jun-17	101	80	80	91	352
May-17	101	80	79	91	351
Apr-17	100	80	78	91	349
Mar-17	101	79	81	91	352
Feb-17	102	81	78	91	352
Jan-17	102	82	77	92	353
Dec-16	100	80	83	85	348
Nov-16	98	81	82	85	346
Oct-16	98	78	83	84	343
Sept-16	99	81	84	84	348

Total School Enrollment

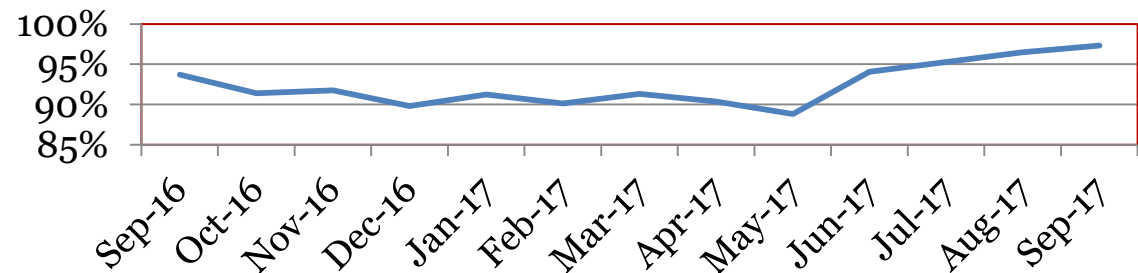


Attendance – Students

Average daily percent present:

	9	10	11	12	Total
Sep-17	97.8	97.2	96.8	97.4	97.3
Aug-17	95.1	95.8	96.6	99.0	96.5
Jun-17	92.8	93.4	93.9	96.3	94.1
May-17	87.2	90.6	90.0	87.9	88.8
Apr-17	88.5	90.5	90.5	92.2	90.3
Mar-17	88.5	91.6	91.5	93.9	91.3
Feb-17	87.5	90.6	88.3	93.3	89.9
Jan-17	88.5	92.7	90.6	93.4	91.2
Dec-16	86.5	90.8	90.0	92.7	89.8
Nov-16	89.8	91.3	92.9	93.3	91.7
Oct-16	88.1	92.4	92.7	93.1	91.4
Sep-16	89.2	95.1	92.6	91.9	92.0

Total Student Attendance



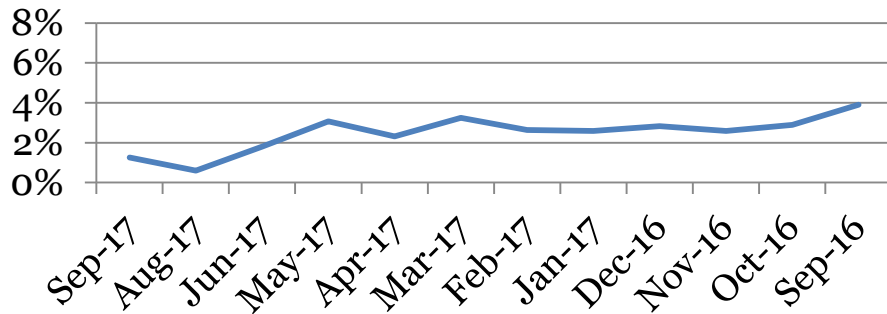
Tardies Average daily percent tardy:

	9	10	11	12	Total
Sep-17	0	1	4	1	1
Aug-17	1	1	1	0	1
Jun-17	2	2	3	1	2
May-17	2	4	3	3	3
Apr-17	2	2	2	3	2
Mar-17	3	4	3	3	3
Feb-17	2	3	2	2	3
Jan-17	2	3	2	3	3
Dec-16	2	3	3	3	3
Nov-16	2	3	2	3	3
Oct-16	3	3	3	3	3
Sept-16	3	4	4	4	4

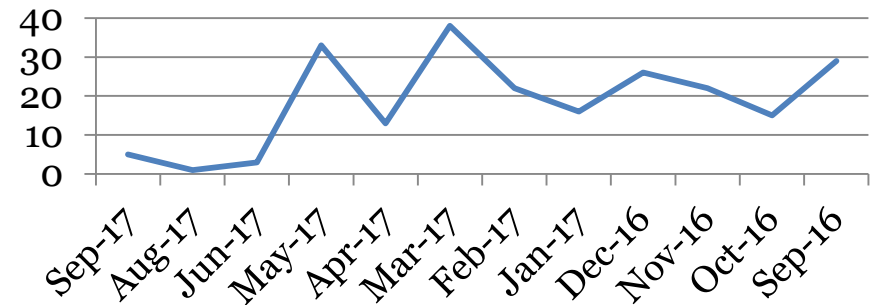
Tardies: Number of students tardy 5 or more days:

	9	10	11	12	Total
Sep-17	0	5	0	0	5
Aug-17	0	0	1	0	1
Jun-17	2	1	0	0	3
May-17	9	11	4	9	33
Apr-17	5	3	0	5	13
Mar-17	9	11	8	10	38
Feb-17	7	7	2	6	22
Jan-17	6	3	3	4	16
Dec-16	3	9	5	9	26
Nov-16	7	5	2	8	22
Oct-16	1	5	4	5	15
Sept-16	4	11	9	5	29

Total Student Tardies



Students over Threshold

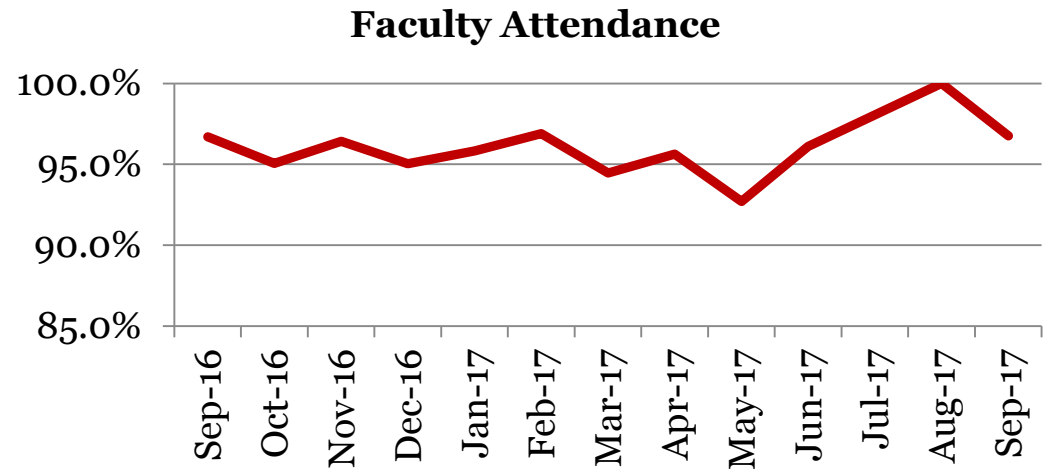


Attendance – Faculty

Average daily percent present:

Derby High School

	Total
Sep-17	96.8
Aug-17	100.0
Jun-17	96.1
May-17	92.7
Apr-17	95.6
Mar-17	94.5
Feb-17	96.9
Jan-17	95.8
Dec-16	95.0
Nov-16	96.4
Oct-16	95.1
Sept-16	96.7



**This indicator reflects certified staff and does not include absences created by class trips, professional development, workman's comp and FMLA. However % may be reduced due to long term illness beyond FMLA.*

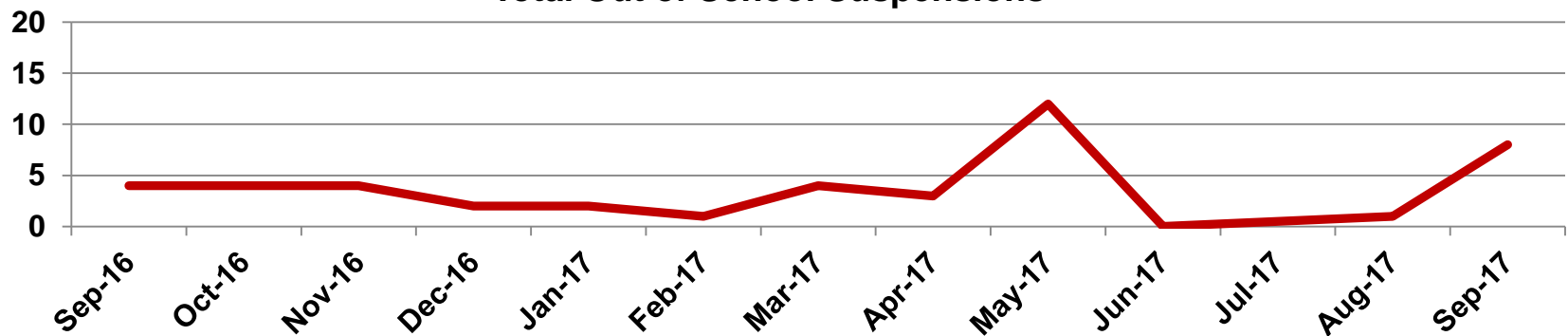
Suspensions – Out of School

Derby High School

Number of student suspensions (total days of suspension):

	9		10		11		12		Total	
Sep-17	0	(0)	3	(19)	3	(25)	2	(20)	8	(64)
Aug-17	1	(10)	0	(0)	0	(0)	0	(0)	1	(10)
Jun-17	0	(0)	0	(0)	0	(0)	0	(0)	0	(0)
May-17	5	(28)	3	(21)	3	(10)	1	(2)	12	(61)
Apr-17	2	(12)	0	(0)	1	(10)	0	(0)	3	(22)
Mar-17	3	(22)	0	(0)	1	(2)	0	(0)	4	(24)
Feb-17	1	(2)	0	(0)	0	(0)	0	(0)	1	(2)
Jan-17	0	(0)	0	(0)	1	(10)	1	(5)	2	(15)
Dec-16	1	(10)	1	(10)	0	(0)	0	(0)	2	(20)
Nov-16	2	(15)	1	(3)	1	(2)	0	(0)	4	(20)
Oct-16	2	(20)	0	(0)	2	(13)	0	(0)	4	(33)
Sept-16	1	(2)	0	(0)	2	(15)	1	(3)	4	(20)

Total Out of School Suspensions

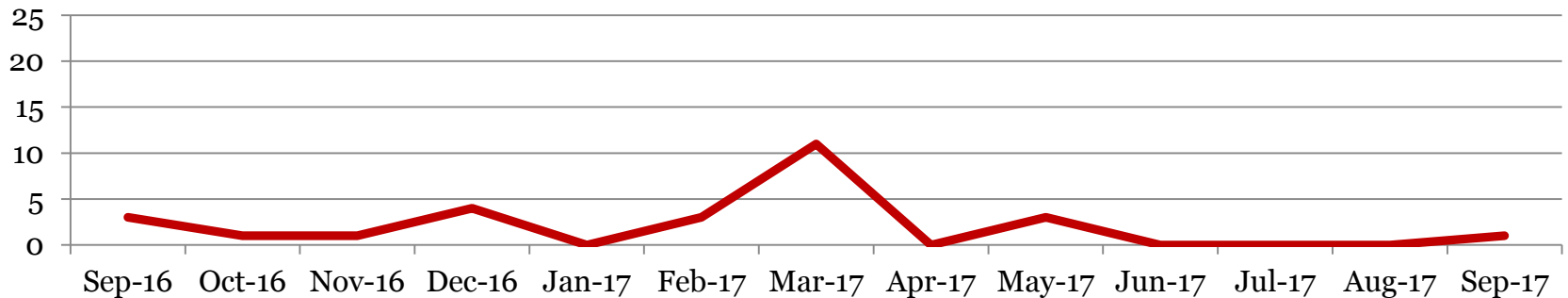


Suspensions – In School

Number of student suspensions (total days of suspension):

	9		10		11		12		Total	
Sep-17	1	(1)	0	(0)	0	(0)	0	(0)	1	(1)
Aug-17	0	(0)	0	(0)	0	(0)	0	(0)	0	(0)
Jun-17	0	(0)	0	(0)	0	(0)	0	(0)	0	(0)
May-17	0	(0)	3	(4)	0	(0)	0	(0)	3	(4)
Apr-17	0	(0)	0	(0)	0	(0)	0	(0)	0	(0)
Mar-17	1	(2)	8	(0)	2	(3)	0	(0)	11	(5)
Feb-17	2	(4)	0	(0)	1	(1)	0	(0)	3	(5)
Jan-17	0	(0)	0	(0)	0	(0)	0	(0)	0	(0)
Dec-16	2	(2)	2	(3)	0	(0)	0	(0)	4	(5)
Nov-16	0	(0)	1	(1)	0	(0)	0	(0)	1	(1)
Oct-16	1	(1)	0	(0)	0	(0)	0	(0)	1	(1)
Sept-16	1	(1)	2	(2)	0	(0)	0	(0)	3	(3)

Total In School Suspensions



Newly Enrolled Students

	9	10	11	12	Total
Sep-17	6	2	2	2	12
Aug-17	9	3	6	5	23
Jun-17	0	0	0	0	0
May-17	2	0	1	0	3
Apr-17	1	1	1	0	3
Mar-17	2	2	1	0	5
Feb-17	1	0	1	0	2
Jan-17	4	3	0	1	8
Dec-16	0	0	1	0	1
Nov-16	1	1	1	0	3
Oct-16	2	3	3	1	9
Sept-16	11	1	4	1	17

Departing Students

Students who have left the school during the month for any reason:

	9	10	11	12	Total
Sep-17	2	0	1	1	4
Aug-17	4	6	5	1	16
Jun-17	0	0	0	0	0
May-17	0	1	0	0	1
Apr-17	0	0	0	0	0
Mar-17	2	0	2	0	4
Feb-17	1	0	0	0	1
Jan-17	1	0	0	0	1
Dec-16	1	1	1	0	3
Nov-16	0	1	0	0	1
Oct-16	3	1	3	1	8
Sept-16	1	1	1	1	4

Dropouts

Student who discontinue schooling, leave for a GED program/Job Corp, or are dis-enrolled by grade level.

	9	10	11	12	Total
Sep-17	0	1	0	1	2
Aug-17	0	0	0	0	0
Jun-17	0	0	0	0	0
May-17	0	0	0	0	0
Apr-17	0	0	0	0	0
Mar-17	9	0	0	0	1
Feb-17	0	0	0	0	0
Jan-17	0	0	0	0	0
Dec-16	0	0	0	0	0
Nov-16	0	0	0	0	0
Oct-16	0	0	0	0	0
Sept-16	1	0	1	1	3