

EXHIBIT "A"

**680 SQUARE FOOT TRACT
LEGAL DESCRIPTION**

BEING a 680 square foot tract out of Block 3, Medical Center Subdivision, as shown on a map recorded in Volume 53, Pages 144-145, Map Records, Nueces County, Texas, and being more particularly described as follows:

BEGINNING at a calculated point on the west right-of-way of 19th Street, for the southeast corner, and the **POINT of BEGINNING** of the herein described tract; **from WHENCE** a 5/8" iron rod was found on the said west right-of-way, for a corner of said Block 3, bears South 01°33'59" East, a distance of 37.59 feet.

THENCE South 88°26'01" West, a distance of 17.00 feet to a calculated point for the southwest corner of the herein described tract;

THENCE North 01°33'59" West, a distance of 40.00 feet to a calculated point for the northwest corner of the herein described tract;

THENCE North 88°26'01" East, a distance of 17.00 feet to a calculated point for the northeast corner of the herein described tract;

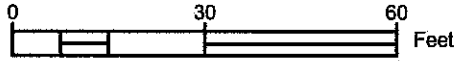
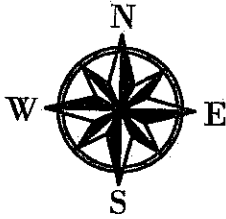
THENCE South 01°33'59" East, with the west right-of-way of 19th Street, a distance of 40.00 feet to the **POINT OF BEGINNING** and containing 680 square feet of land.

NOTE:

ALL BEARINGS ARE GRID BEARINGS BASED ON THE TEXAS COORDINATE SYSTEM FOR THE LAMBERT SOUTH ZONE NAD 1983. SEPARATE MAP EXHIBIT "B" WITH EVEN DATE ACCOMPANIES THIS DESCRIPTION.

Stacey King Mora, RPLS
Registered Professional Land Surveyor
Texas Registration No. 6166
Hanson Professional Services Inc.
TBPE F#417 TBPLS F# 100395-00

Date: _____



BLOCK 3
MEDICAL CENTER SUBDIVISION
VOLUME 53, PAGES 144-145
M.R., N.C., T.

GENERAL NOTES:

- 1.) COORDINATES ARE BASED ON THE TEXAS COORDINATE SYSTEM FOR THE LAMBERT SOUTH ZONE NAD83.
- 2.) SOME OBJECTS MAY BE DRAWN OUT OF SCALE FOR CLARITY.

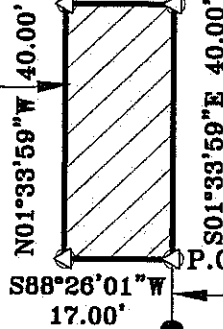
LEGEND:

- = CALCULATED CORNER
- = 5/8" IRON ROD FOUND

19TH STREET
R-O-W Varies

BUS STOP
EASEMENT
680 S.F.

N88°26'01"E
17.00'



P.O.B.

S01°33'59"E
37.59'

HOSPITAL STREET
60' R-O-W

I, Stacey King Mora, Registered Professional Land Surveyor, hereby certify that this survey map was prepared from an actual on the ground survey made under my direction and supervision, and represents the facts found at the time of survey, and that this survey substantially complies with the current standards adopted by the Texas Board of Professional Land Surveying.

Stacey King Mora
Registered Professional Land Surveyor
Texas Registration No. 6166

Hanson Professional Services Inc.
Date: _____

METES AND BOUNDS
DESCRIPTION TO
ACCOMPANY THIS PLAT.

© Copyright Hanson Professional Services Inc. 2018



TBPE F-417 / TBPLS F-10038900
TBAE F-6R 2458 / TDPG F-50556

EXHIBIT "B"
BUS STOP EASEMENT
680 SQUARE FEET

BEING OUT OF BLOCK 3, MEDICAL CENTER SUBDIVISION,
AS SHOWN ON A MAP RECORDED IN VOLUME 53, PAGES
144-145, MAP RECORDS, NUECES COUNTY, TEXAS.

16 LO210-HPG-SIDEWALK-ESMT-SOUTH