

- **DESIGN PROCESS**

- CORE TEAM
- FOCUS GROUPS
- STAFF PRESENTATIONS
- CM/GC FEEDBACK
- SITE COUNCIL

- **SITE**

- **BUILDING**



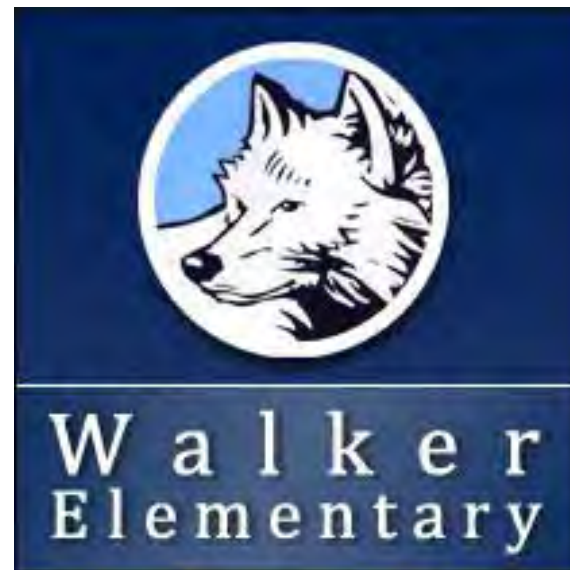




HOMES AVE.







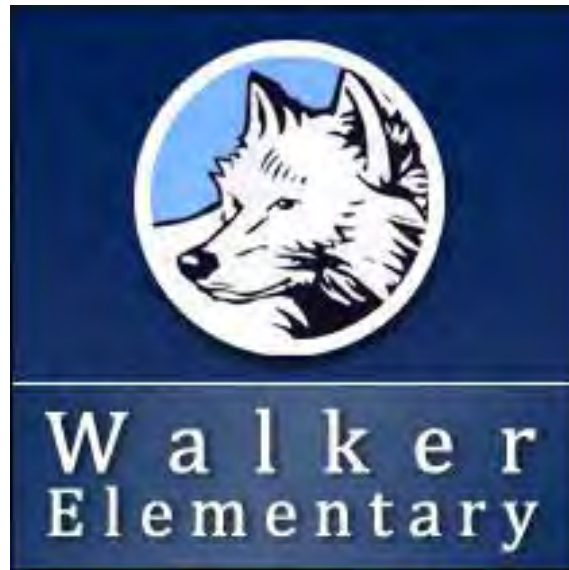
## GIVENS

### COMPREHENSIVE RENOVATION

- REPLACEMENT OF CLASSROOM WING WITH NEW CLASSROOMS
- REDESIGNED ENTRY
- NEW FINISHES, MEP SYSTEMS, DOORS, WINDOWS AND ROOF

### SEISMIC UPGRADES

### RESPECT HISTORIC CHARACTER



# GIVENS

## COMPREHENSIVE RENOVATION

- REPLACEMENT OF CLASSROOM WING WITH NEW CLASSROOMS
- REDESIGNED ENTRY
- NEW FINISHES, MEPS SYSTEMS, DOORS, WINDOWS AND ROOF

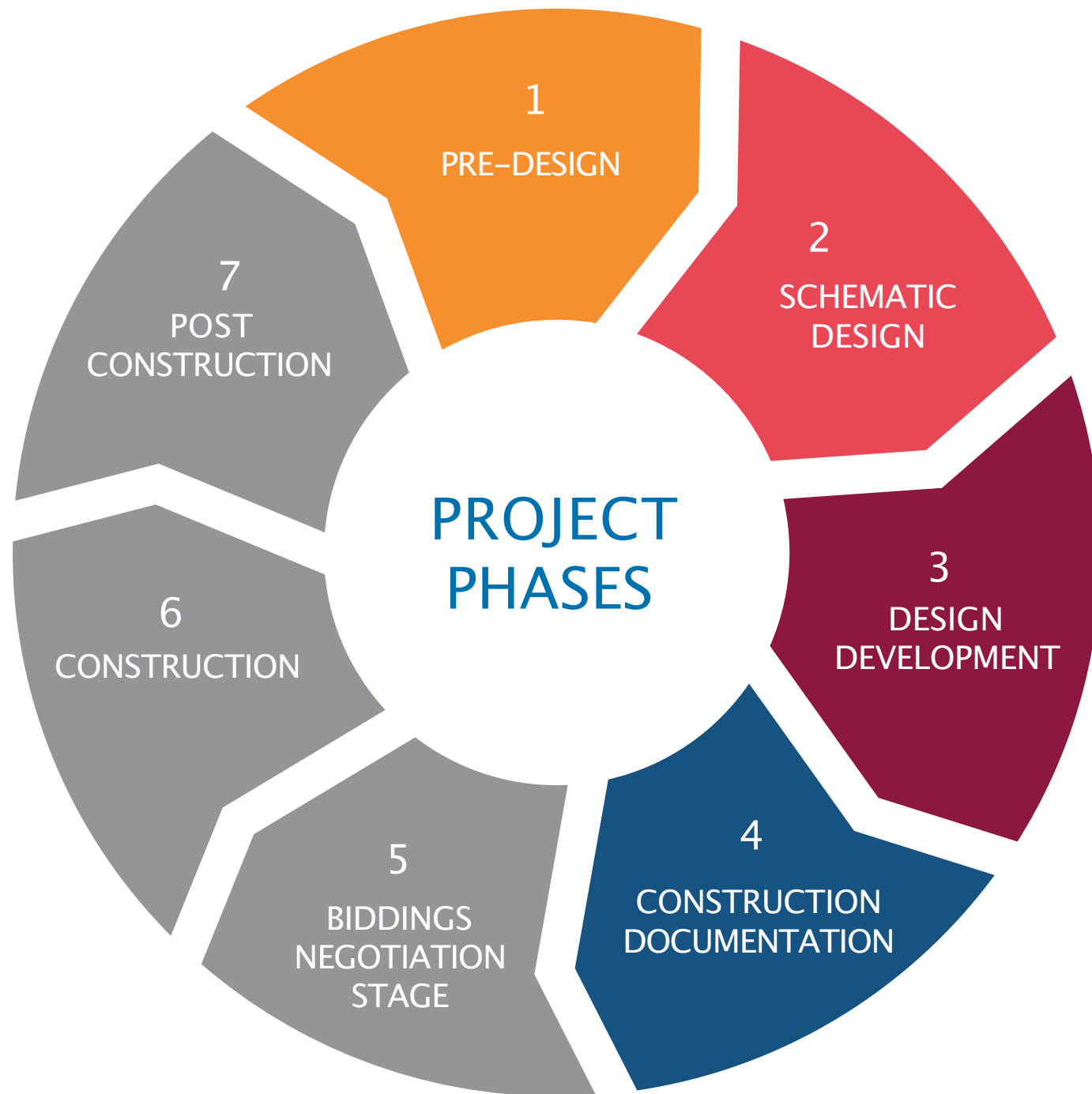
SEISMIC UPGRADES

RESPECT HISTORIC CHARACTER



**SAFETY  
&  
SECURITY**





**1. PRE-DESIGN**

- PROGRAMMING & VISIONING

**2. SCHEMATIC DESIGN**

- SPACE, FORM & RELATIONSHIPS

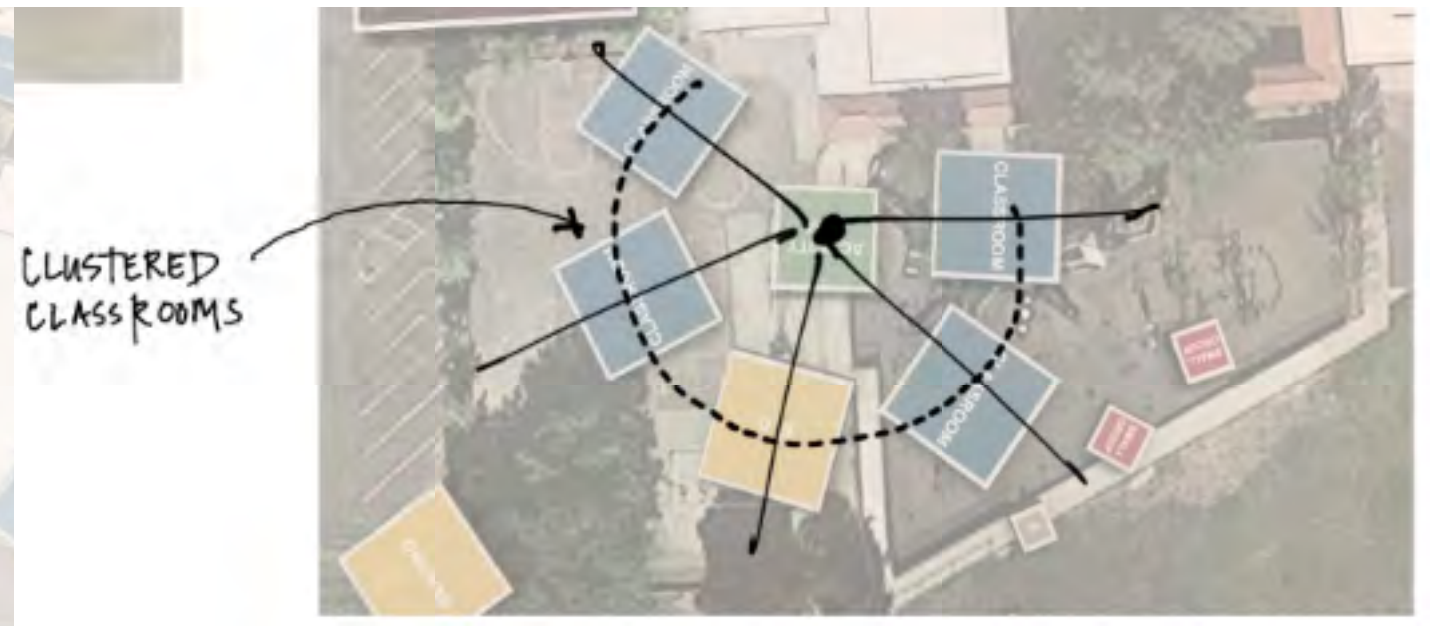
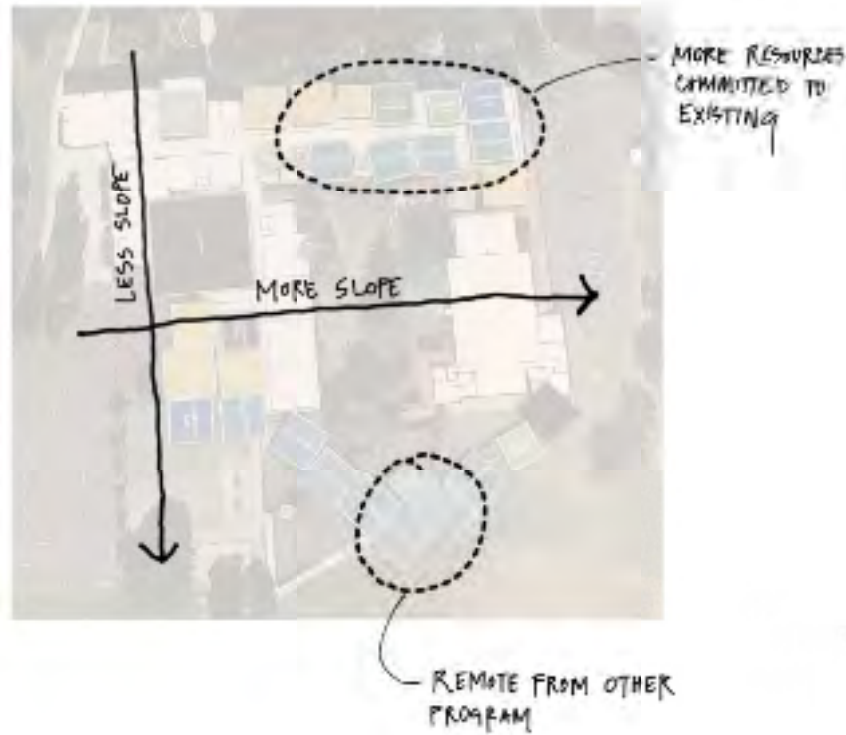
**3. DESIGN DEVELOPMENT**

- SYSTEMS & BUDGET ALIGNMENT

**4. CONSTRUCTION DOCUMENTS**

- COMMUNICATE THE DESIGN









RESPONSE 04

15





OPTION ABBPROGRAM

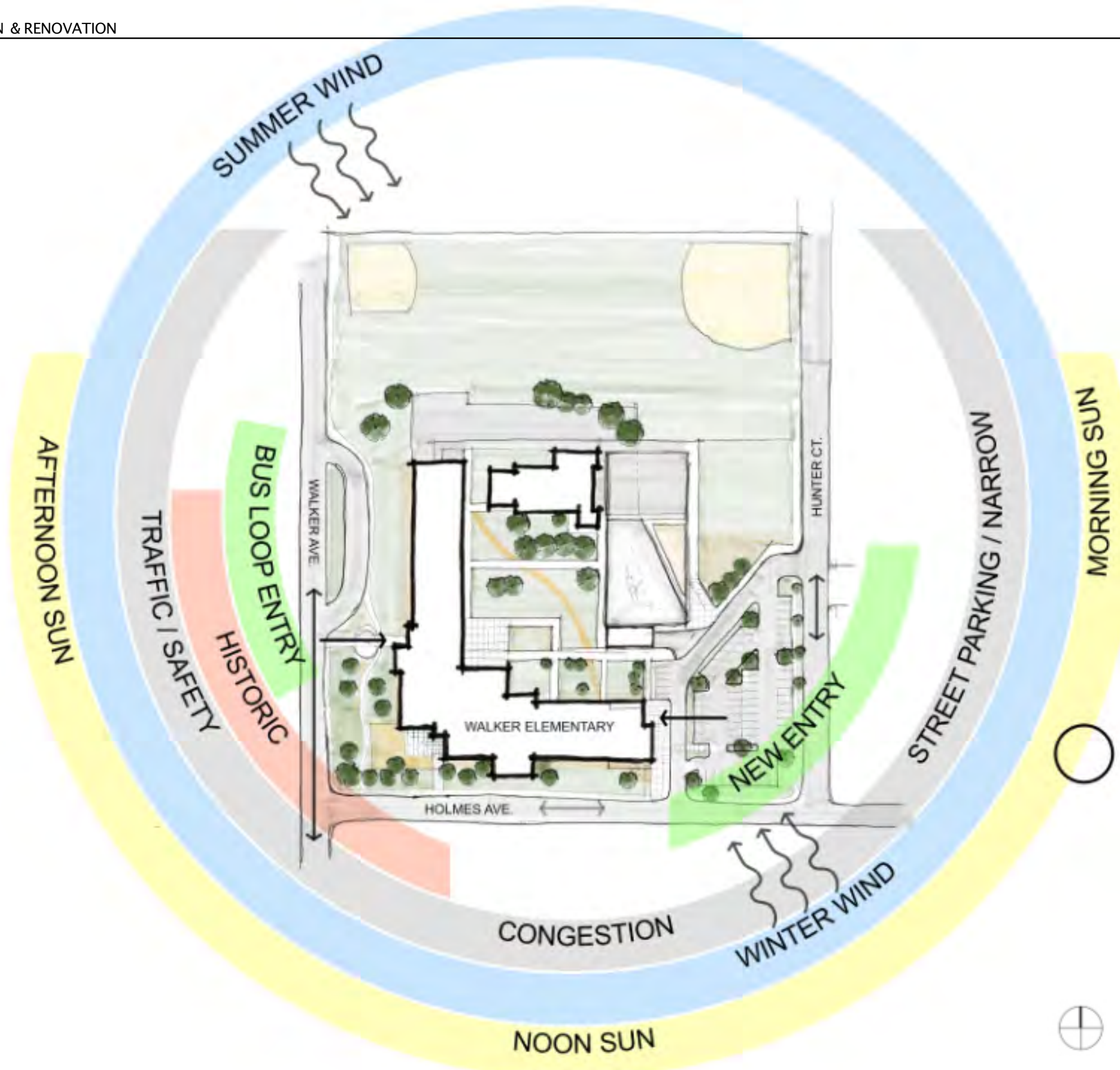


Area	Net=			
	0t1	2nit	A"ocated Space "3tg	4
<b>In"tr\$ctiona'Space"</b>				
Classroom -Standard	6	975	5,850	5850
Activity Area 1 (North)	1	650	650	650
Activity Area 2 (Central)	1	650	650	875
Activity Area 3 (Addition)	1	650	650	480
Computer Labs 1	1	975	975	975
Computer Labs 2	1	975	975	850
Sensory Room	1	600	600	700
Reading Intervention	1	975	975	975
Math Intervention	1	975	975	650
Site Based	1	1300	1,300	1250
Resource	1	975	975	700
ELD	1	975	975	650
Small Group Rooms	2	150	300	300
Multipurpose Lab	1	1000	1,000	1000
Subtotal			(56750)	(56805)
<b>Admini"tration</b>				
Admin Replacement (current 1585)				1700
FSC /Workroom				640
Teacher Break Room	1	750	750	570
Itinerant Offices	1	100	100	100
Staff Toilet	1	75	75	75
Subtotal			8+5	36075
<b>4\$iding S\$pport</b>				
Student Restrooms	2	400	800	735
General Storage	1	100	100	100
Custodial Closet	1	75	75	75
Mechanical Rooms/Boiler	1	1200	1,200	1200
Electrical Rooms	1	250	250	250
Data Closets	1	225	225	225
Subtotal			+6550	+6575
Tota'A""igna9'e Area			20,425	21,575
Gro""ing !actor 3+:			6,536	6,904
T*TA;			+5685(	+764<8











### Guiding Principles

A **welcoming** environment that balances security and accessibility, supports smooth transitions at all phases of the day, and provides infrastructure that maximizes convenience and function.

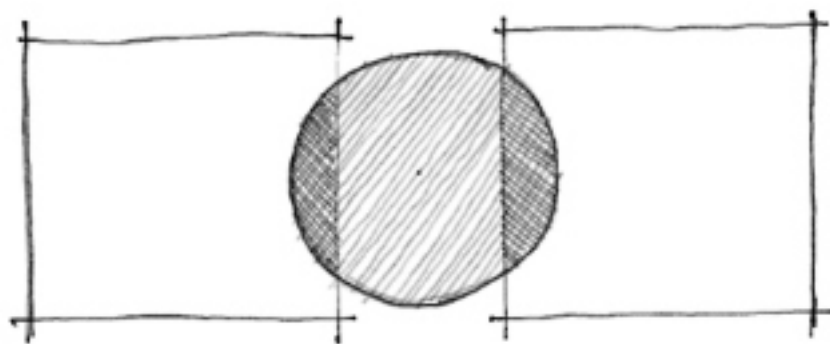
**Flexible**, multi-use learning spaces thoughtfully connected to create playful, fun, and surprising opportunities for learning both inside and out.

An **inclusive**, community approach, to learning that nurtures the whole child by providing support to families and forging relationships to nearby educational partners and opportunities.

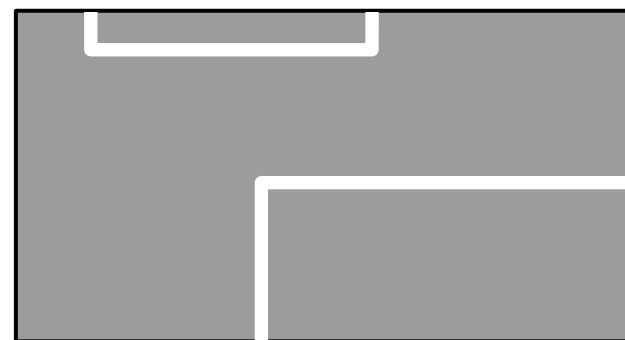
**Diverse** spaces united by a commitment to quiet, comfort, and brightness, offering opportunities for student and staff autonomy, as well as gathering spaces for groups of all sizes.

### Vision Statement

An open, safe, and adaptable environment that fosters curiosity, values diverse perspectives, and celebrates inventive learning that is connected to the community.



SPACES LINKED BY A COMMON SPACE



LINKED BY WHAT WE HAVE IN COMMON

A secure perimeter of the school campus (2)  
 Safe, calm and organized dismissal  
 Better student pick up/drop off area  
 Better, larger parking lot  
 Safer traffic and parking lot areas (4)  
 Safe and orderly dismissal (4)  
 Community training around school procedures  
 Welcome center  
 Fence  
 Space to gather w/ other parents

Spaces that promote whole child health  
 Better space for students to decompress (2)  
 Space for school services – laundry, food pantry, basic needs (2)  
 More space for students to read/settle down  
 Sensory/sensitive environments for staff and students  
 Health room w window to office and better ventilation  
 Inclusive environment – gender neutral restrooms  
 Quiet places (1)  
 Sensory rooms seeking/avoiding (1)  
 Buddy  
 Inclusive environment  
 A welcoming environment  
 Family Resource Center

Flexible learning spaces:  
 Multi-use Classrooms  
 Classroom w flexible seating and spaces for small groups (1)  
 Storage space in classrooms  
 Ways to expand the traditional classroom  
 Fun, curiosity inspiring places throughout the school (3)  
 Silly Space – School is fun



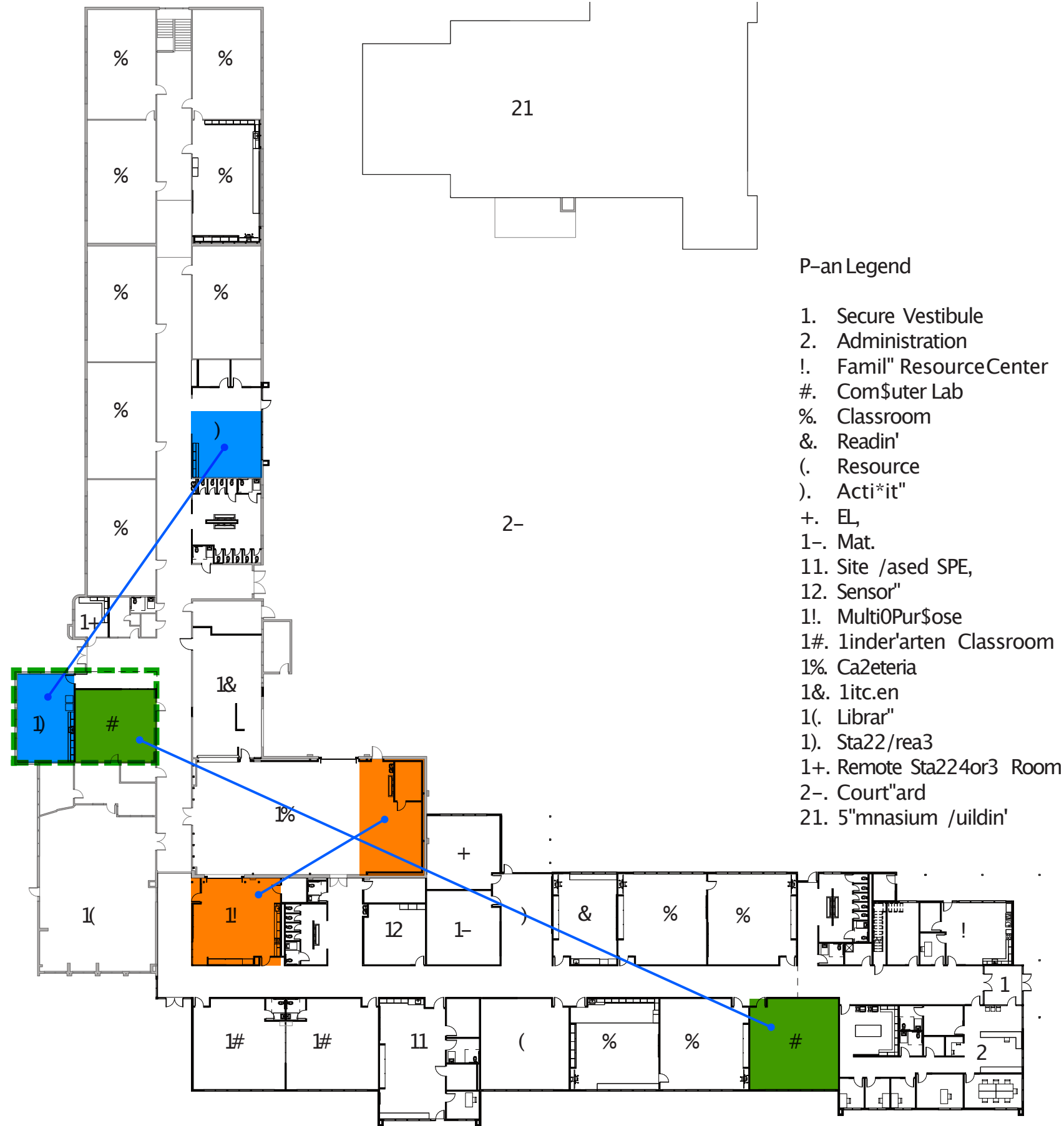




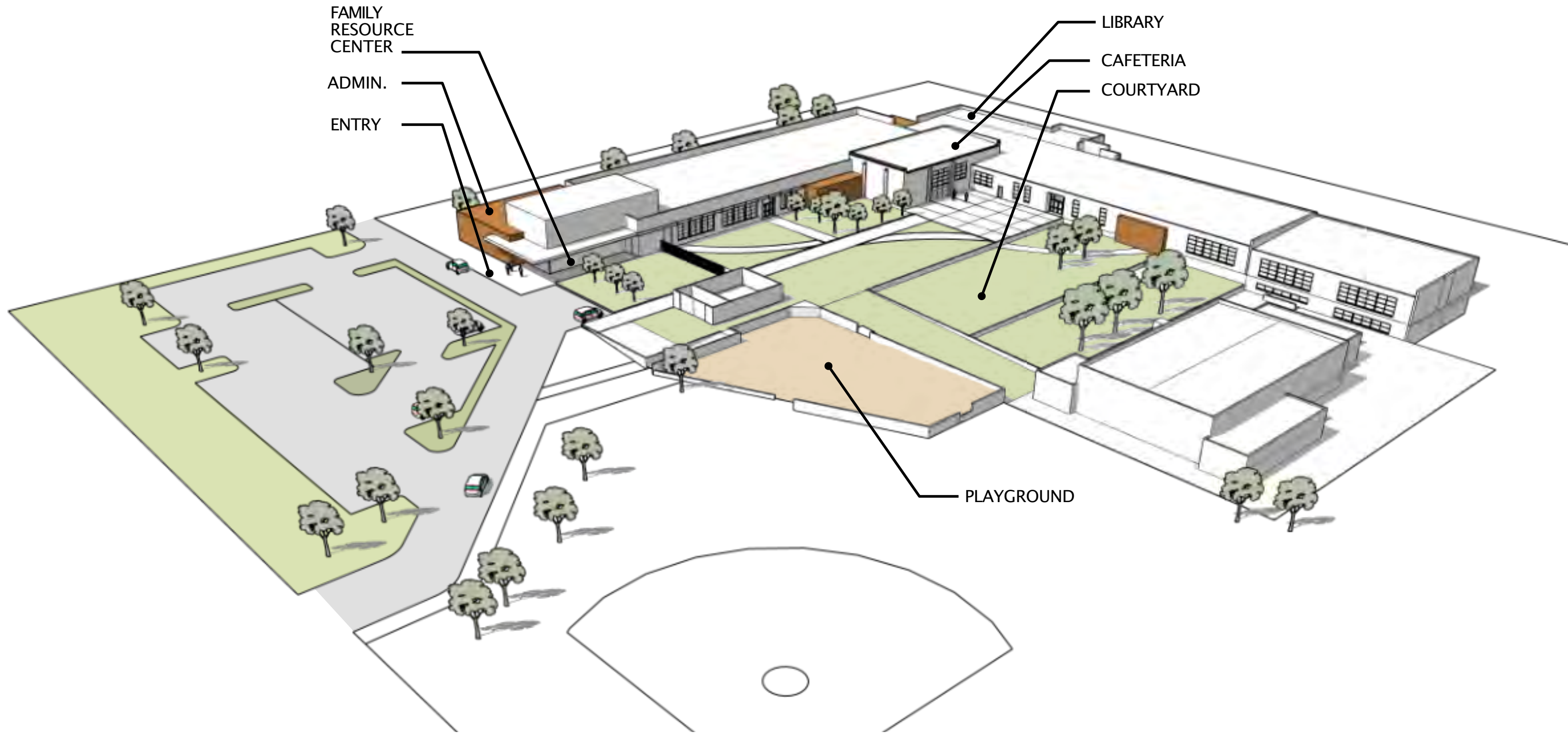




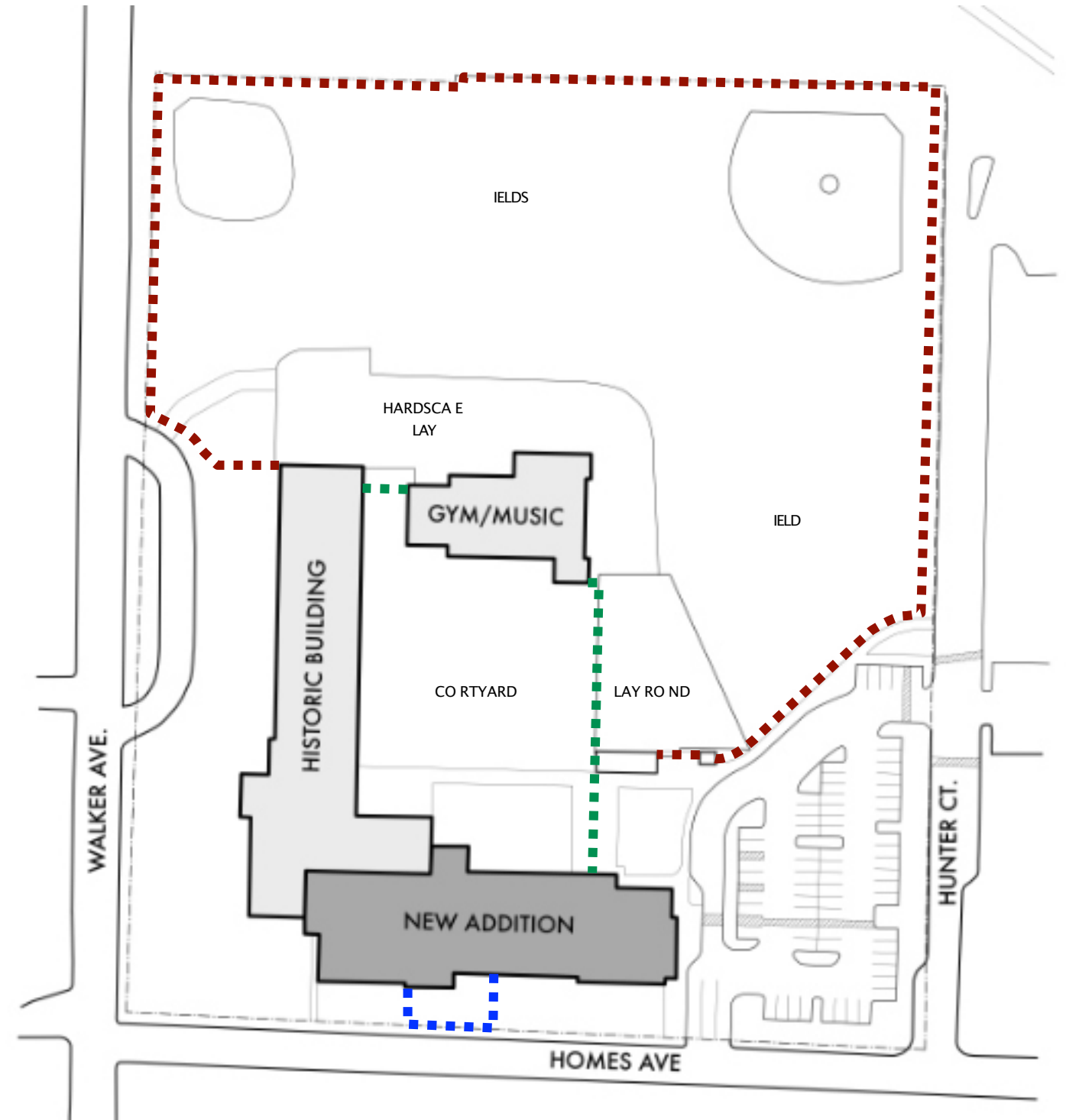
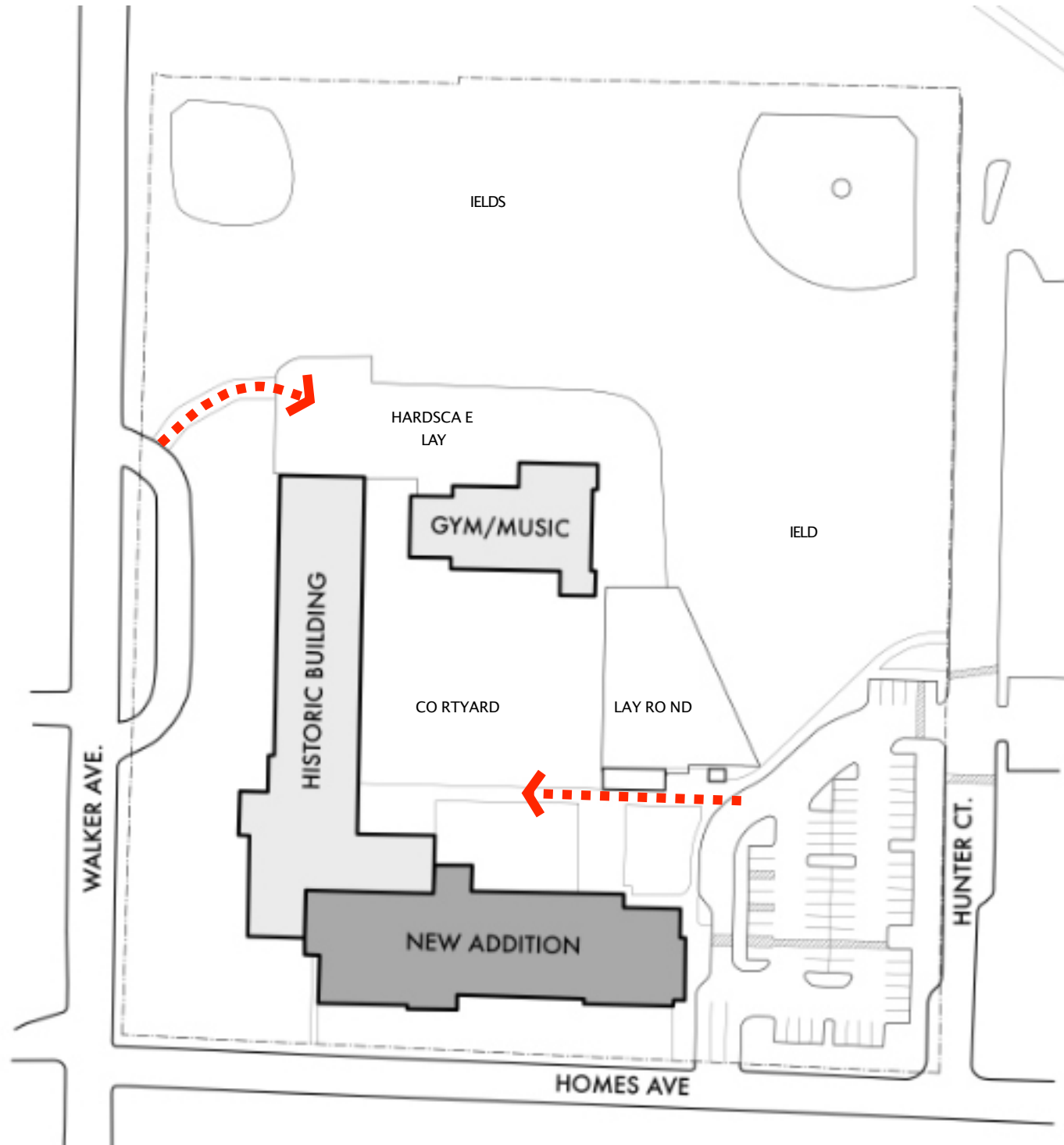
# (3) MOVES











SITE DIA RAM IREACCESS

IREACCESS



SITE DIA RAM ENCIN

- PERIMETER ENCIN
- COURTYARD ENCIN
- SHED ENCIN







# SITE COUNCIL FEEDBACK

MOVED ACCESSIBLE PARKING



CREATED A LONGER DROP-OFF & PICK-UP LANE

ALLOWED TWO-WAY TRAFFIC WITHIN THE PARKING LOT



INTERNAL PARKING LOT CIRCULATION

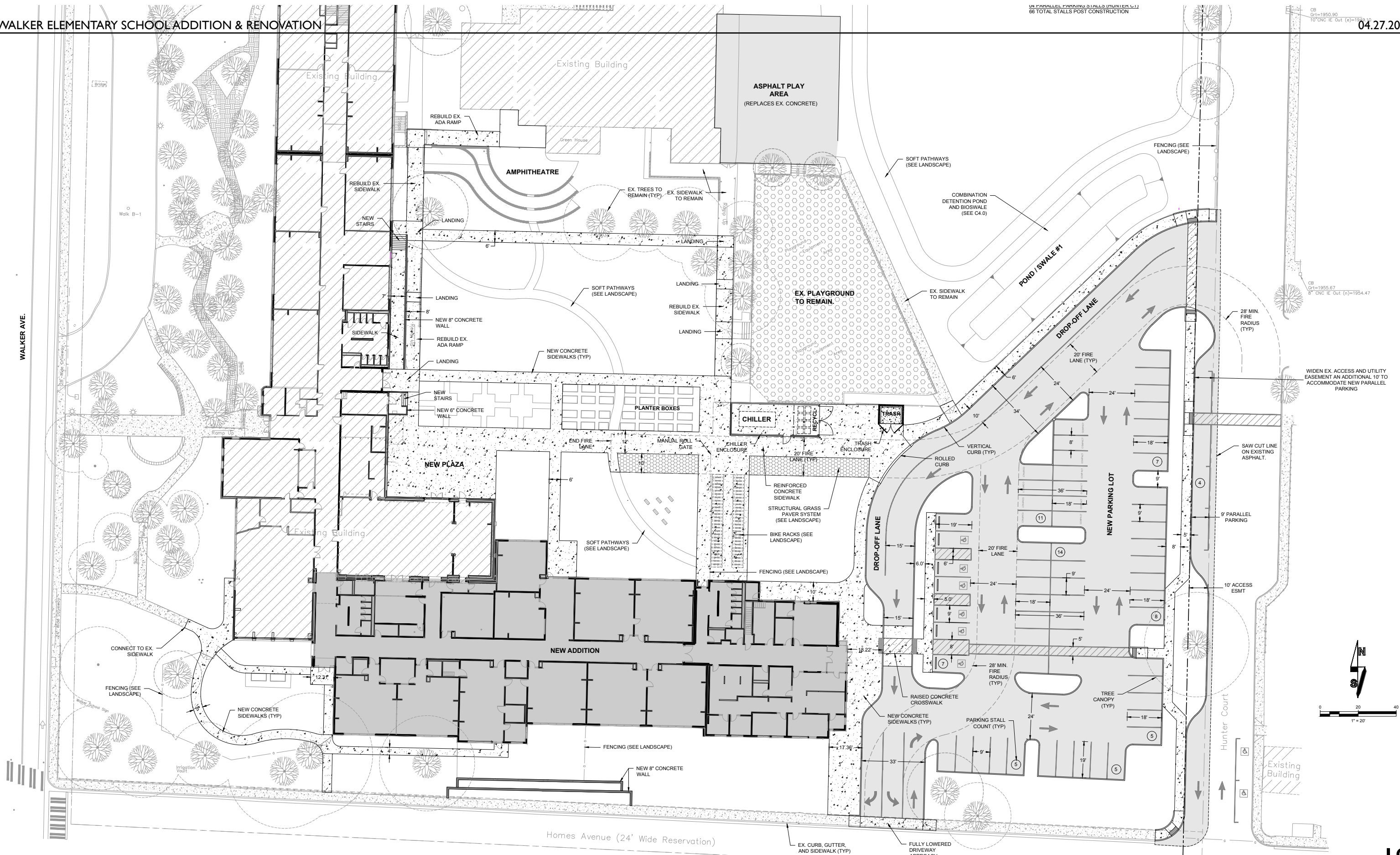
PARKING LOT ENTRANCE OFF HOMES AVE.



HUNTER CT. USED DURING PEAK TIMES

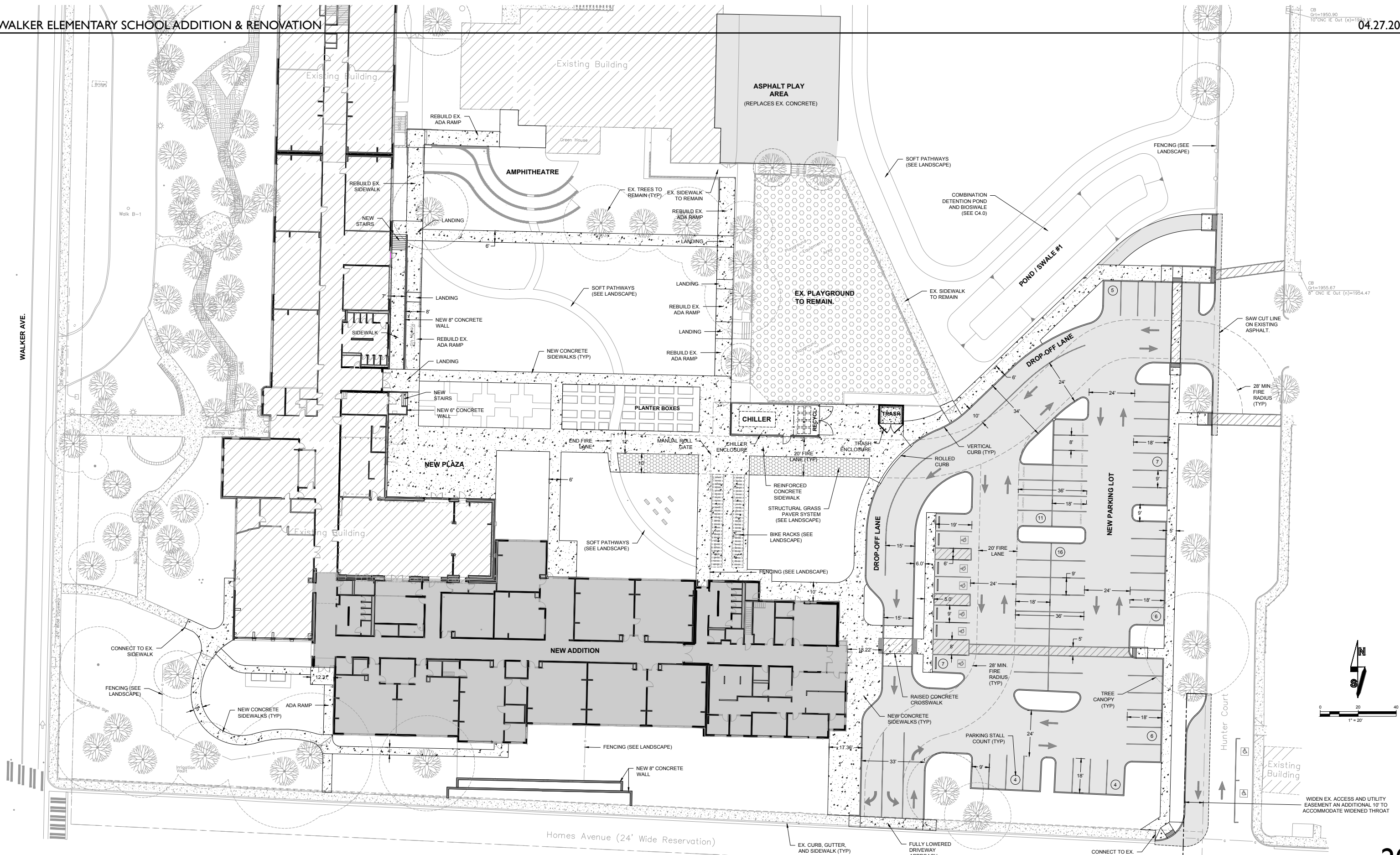






SITE PLAN - LAND USE  
ASD SPECIAL WORK SESSION



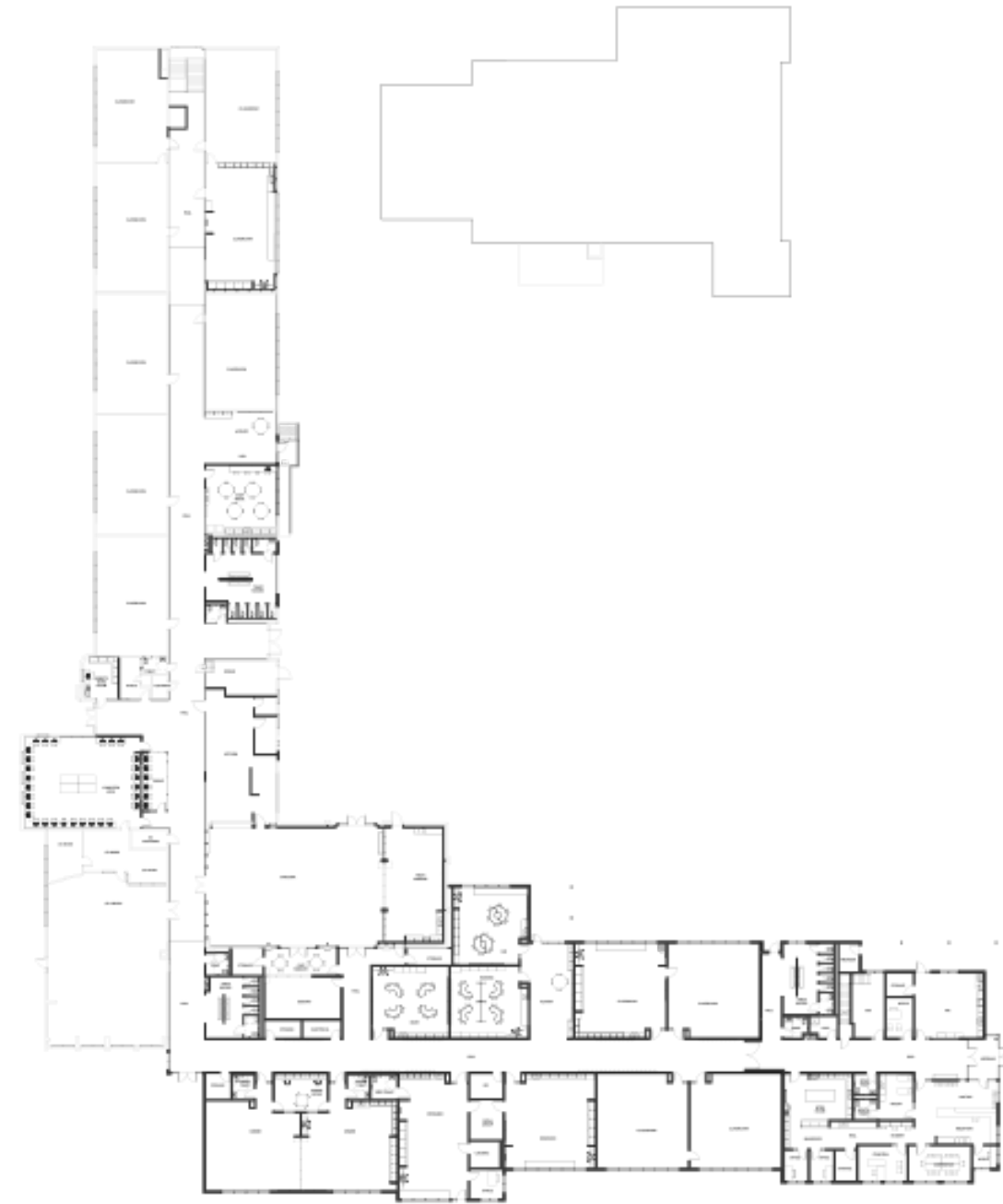


SITE PLAN - PARKS & RECREATION

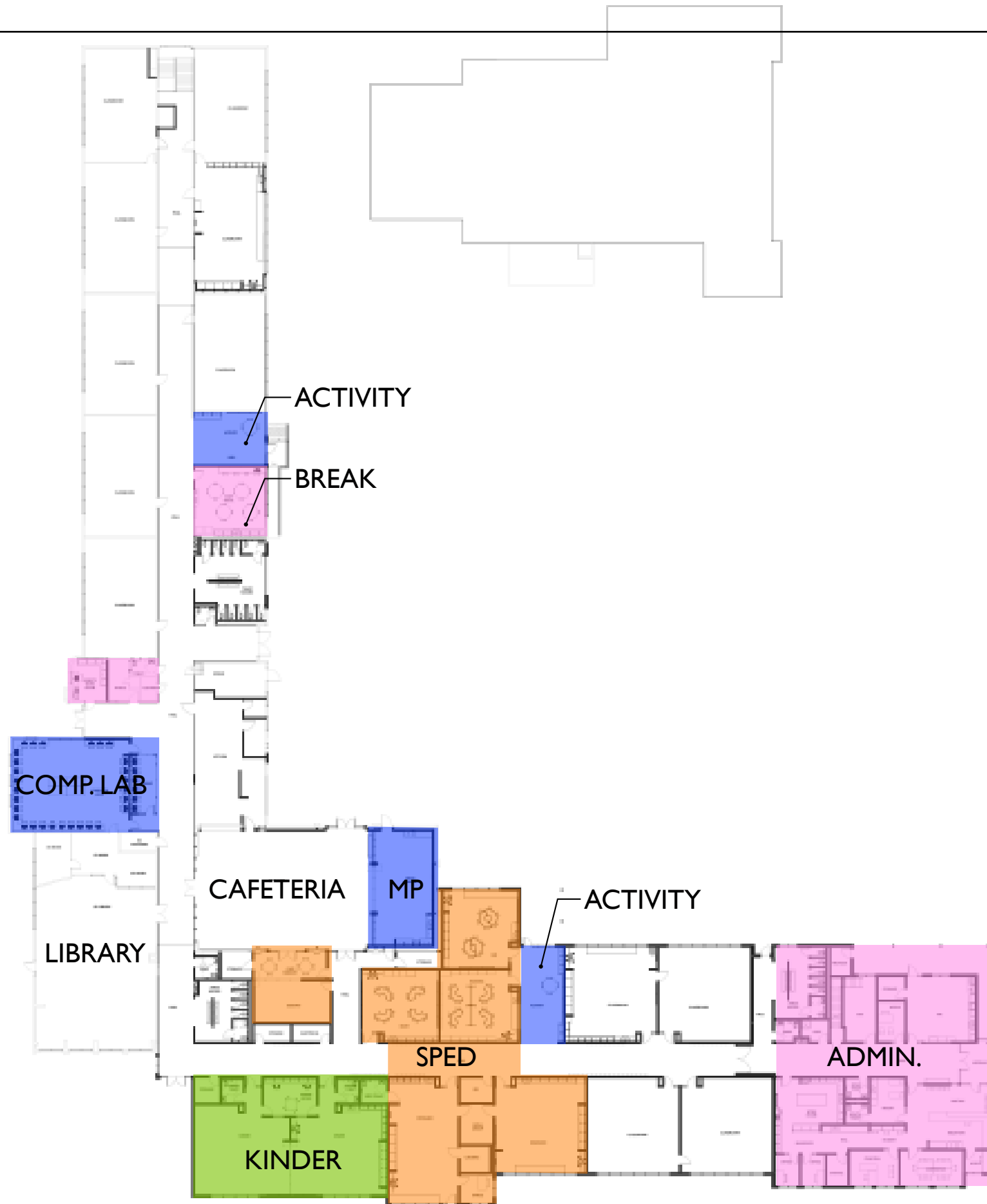
ASD SPECIAL WORK SESSION

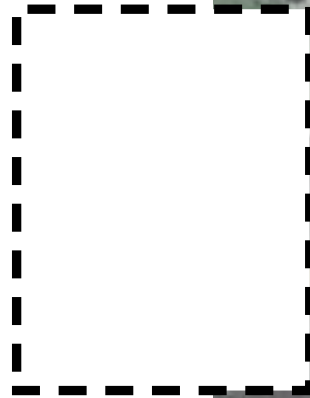




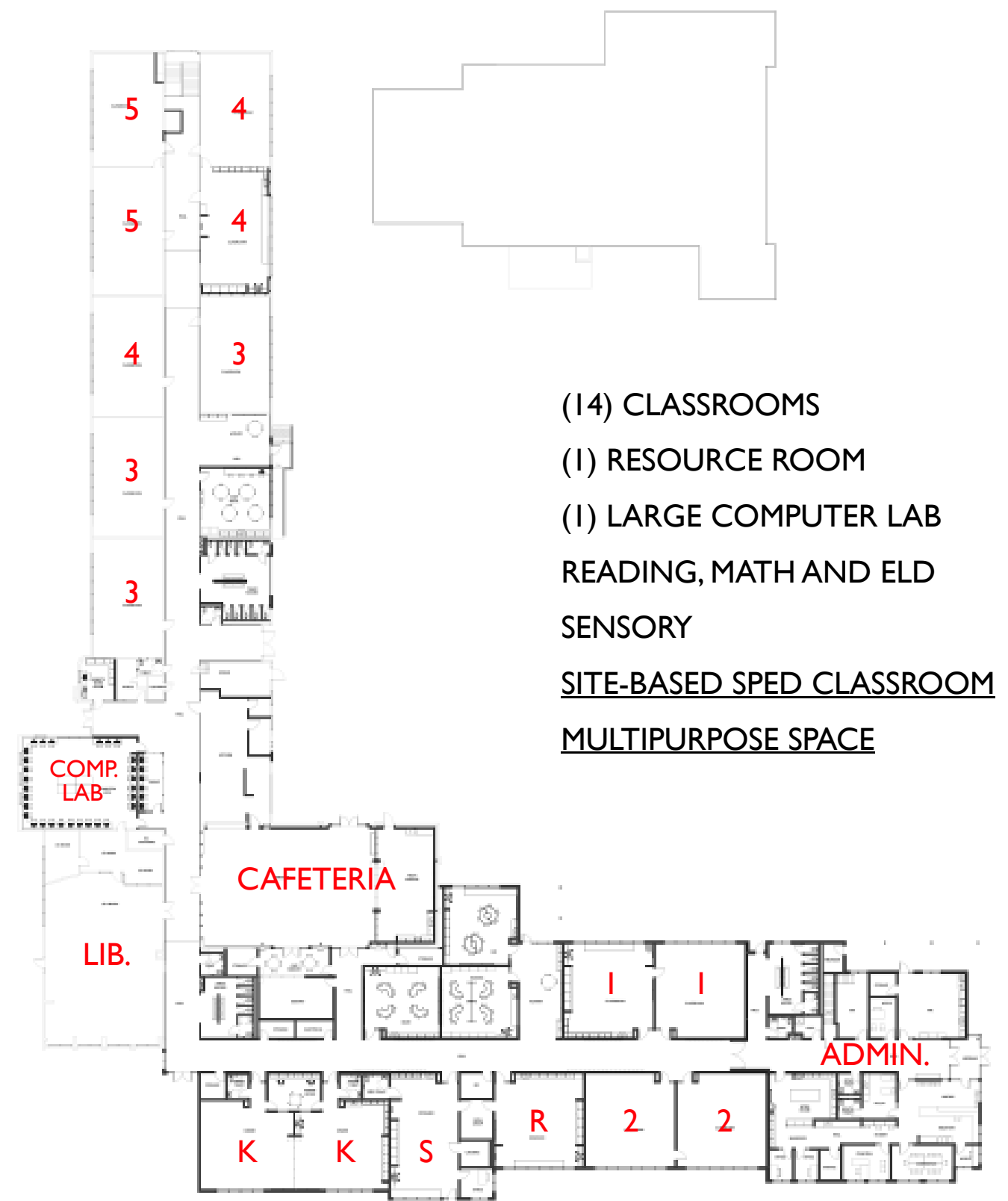
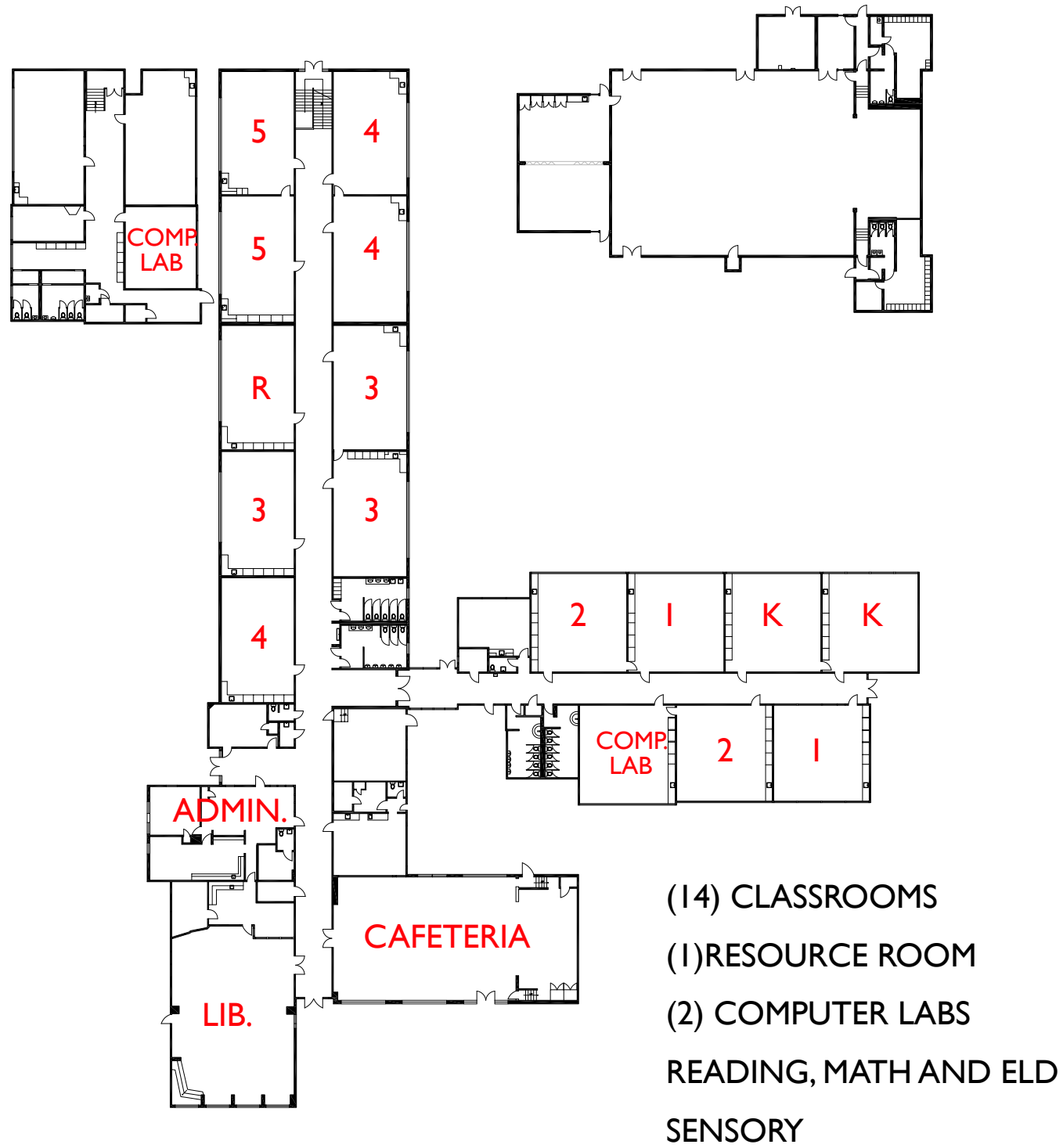












**EXISTING SCHOOL**

**PROPOSED SCHOOL**



## ALTERNATIVE PATHS TOWARDS A GOAL