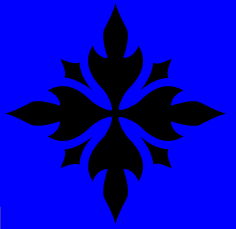
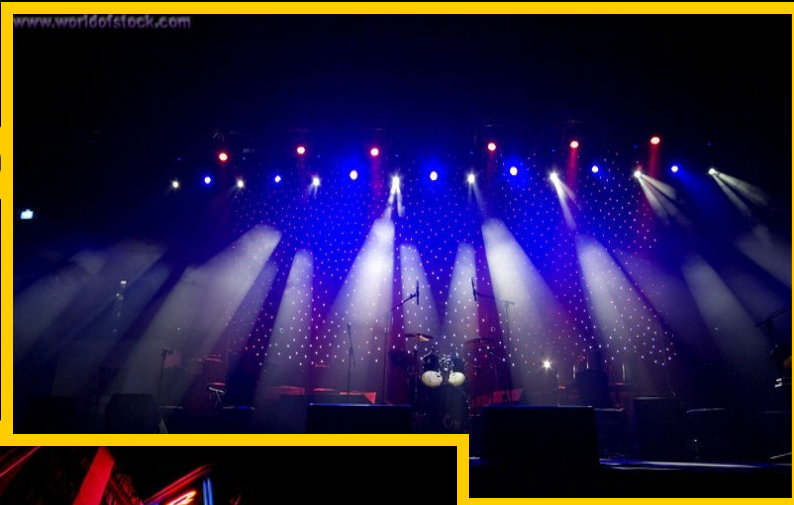


# FINALE



NATIONAL SHOW CHOIR  
CHAMPIONSHIPS AND PERFORMING  
ARTS SEMINARS



OVER \$10,000 IN  
SCHOLARSHIP  
PRIZES

LARGE SCHOOL  
NATIONAL DIVISION

SMALL SCHOOL  
NATIONAL DIVISION

PREP/JV GROUP  
DIVISION

UNISEX NATIONAL  
DIVISION

NATIONAL SOLO  
DIVISION

WHERE: RADIO CITY  
MUSIC HALL

New York, New York

WHEN: April 7th-10th 2011

1-800-287-0532

[www.finalenationals.com](http://www.finalenationals.com)



MIND'S EYE  
CONCEPTIONS



# FINALE

MORE THAN A COMPETITION, MORE THAN A WORKSHOP

The Finale National Show Choir Championships & Performing Arts Seminars will take place in the heart of performance, New York City, New York. This event will showcase and host the nation's best high school show choirs in a four-day intensive seminar and competition.

This competition is designed to bring together the nations show choirs to the performance capitol of the world to determine which will be able to claim they are the very best in the nation.

With five separate national level divisions, Finale truly covers all the bases to find the best in the country in show choir. After a Preliminary performance, the top five groups from the Large Mixed Division, and the top three groups from the Small Mixed Division will move on to the evening finals to determine their Grand Champion. The Unisex, Middle School and JV/Prep Group divisions will crown their Grand Champion after Preliminary Performances.

The creators of Finale believe that you and your program should be rewarded for your hard work and dedication. We also understand that this undertaking is not cheap, so for the first time in a national competition, Finale will award over \$10,000 in scholarship prizes to the finalists and Grand Champions of the competition.

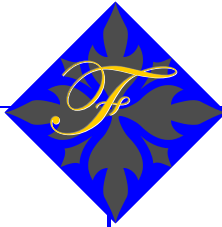
Finale's Performing Arts Seminars will be held the day before Prelim performances and will give your students the unique opportunity to work with the top instructors in the fields of dance, voice and combo instrumentation. These seminars are included in your package and are guaranteed to create a memorable and educational environment for your students.

The "fun" factor for the students has been taken into account with Finale. As part of the performer package, the evening before Preliminary performance there is a completely FREE dance/pizza party for all participants. This dance is designed for your students to have some relaxing time and also promote camaraderie between the participants.

Also in the "fun" factor, but keeping with the educational value and experience of New York City for the weekend, part of your package includes tickets to a Broadway Musical/Play of your choice. In addition to this, Finale also offers different dining locations that are both fun and unique to the New York area to further the experience for your students, all included in your package.

# FINALE

## CHAMPIONSHIP PRIZES



### LARGE MIXED

#### NATIONAL DIVISION

- 5 FINALISTS
- GRAND CHAMPION - \$4,000 PRIZE
- 1ST RUNNER UP- \$3,000 PRIZE
- 2ND RUNNER UP- \$1,000 PRIZE
- 3RD RUNNER UP- \$500 PRIZE
- 4TH RUNNER UP- \$500 PRIZE

### UNISEX

#### NATIONAL DIVISION

- GRAND CHAMPION- \$1,000 PRIZE

### SMALL MIXED

#### NATIONAL DIVISION

- 3 FINALISTS
- GRAND CHAMPION- \$2,000 PRIZE
- 1ST RUNNER UP- \$500 PRIZE
- 2ND RUNNER UP- \$500 PRIZE

### ALL FINALIST

### GROUPS

- PLACEMENT TROPHIES
- GRAND CHAMPION GOLD MEDALS
- FINALIST T-SHIRTS

### ALL COMPETITIVE GROUPS

- COMMEMORATIVE PLAQUES
- SOUVENIR SECURITY LANYARDS/PASSES
- SOUVENIR T-SHIRTS
- PIZZA PARTY/DANCE FRIDAY NIGHT

\* All Prizes are in scholarship form to be awarded to the school. Schools may disperse scholarships as they see fit

# FINALE

## DIVISION GUIDELINES

### Large Mixed Division

1201 students in school or more in high school population

More than five years of competitive existence

33 singer/dancers or more

\*Top 5 Large Division Schools will advance to large division finals

### Small Mixed Division

32 singers/dancers or less in group

Within five years of competitive existence

High School Population of 1200 or less

\*Top 3 Small Division Schools will compete in finals

### Unisex Division

Any single gender group

Not eligible for finals

### Prep/JV Group Division

Any group that acts as a direct feeder to a Varsity or Large group

Eligible for finals only if score is in the range of the top 5 in Large Mixed Division

### Middle School Division

Grades 5-9

Not eligible for finals

### Solo Division

**Any Student participating in the Finale Event grades 5-12.**

**1 Female Champion, 1 Male Champion**

\*High School Population numbers based on enrolled students for the current scholastic year in grades 9-12. JV/Prep Groups will not be eligible for competing in Large division during preliminaries, but if their preliminary score is high enough, they may qualify for finals of Large Mixed. . Unisex groups can only compete in the Unisex division. Groups that qualify for the Large Division cannot compete in the Small Division. Groups that qualify for the Small Division may choose to compete in the Large Division. Middle School Groups do not qualify for any finals and cannot compete in any other division. Middle School groups are permitted to have grades 5-9. Solo Division will have 1 male and 1 female champion. Top 6 of Solo division will perform between finalists groups on Saturday evening.

# FINALE

## PERFORMING ARTS SEMINARS/SOUND CHECK

FINALE'S PERFORMING ARTS SEMINARS WERE CREATED TO GIVE STUDENTS AND DIRECTORS THE OPPORTUNITY TO WORK WITH THE WORLD'S BEST INDIVIDUALS IN ALL AREAS OF DANCE, VOCAL TECHNIQUE, ACTING, AND VARIOUS OTHERS. THE SEMINARS WILL BE HELD AT THE WORLD-RENOWNED ALVIN AILEY AMERICAN DANCE CENTER. YOUR SOUVENIR SECURITY PASS IS THE ONLY TICKET YOUR STUDENTS WILL NEED FOR ADMISSION TO THIS EVENT.

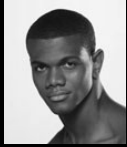
THE SEMINARS WILL LAST FOR 45-75 MINUTES EACH CLASS, AND WILL TAKE PLACE FROM 10AM-3PM ON FRIDAY APRIL 8TH. YOUR STUDENTS WILL BE ABLE TO MEET STUDENTS FROM OTHER SCHOOLS, AND LEARN ALONG SIDE THEM IN AN EXCITING AND NEW ENVIRONMENT.

ALSO TAKING PLACE ON FRIDAY APRIL 8TH, WILL BE THE SOUND CHECK FOR EACH PARTICIPATION GROUP IN FINALE. THE SOUND CHECK WILL LAST FOR 20 MINUTES PER PERFORMING GROUP, AND GIVE YOUR STUDENTS AND STAFF A CHANCE TO GET USED TO THE PERFORMING VENUE AND STAGE LIGHTING/SOUND BEFORE YOUR MAIN PERFORMANCE IN PRELIMS. THIS TIME IS CLOSED TO ALL SPECTATORS AND ONLY THE GROUPS STAFF/PERFORMERS ARE ALOUD IN THE MAIN PERFORMANCE HALL DURING YOUR TIME. ALLOWING YOU TO MAKE CRUCIAL FINAL ADJUSTMENTS BEFORE BEING ADJUDICATED IN NATIONAL COMPETITION.

SOUND CHECK IS OPTIONAL, BUT IT IS STRONGLY SUGGESTED THAT YOU TAKE ADVANTAGE OF THIS OFFERED REHEARSAL TIME ON THE PERFORMANCE STAGE. MISSED SOUND CHECK TIMES WILL NOT BE MADE UP. THIS TIME IS YOURS DO WITH WHAT YOU CHOSE WHILE YOU ARE ON THE MAIN PERFORMANCE STAGE. A REPRESENTATIVE OF FINALE WILL BE ON HAND TO ASSIST WITH LIGHTING AND SOUND LEVELS.

# FINALE

## FRIDAY MASTER CLASS CLINICIANS



**JARVIS MCKINLEY/BALLET-CONTEMPORARY** JARVIS BEGAN HIS DANCE TRAINING AT THE DANCE PLACE STUDIO AND PINE BELT YOUTH BALLET AT AGE TWELVE. HE ALSO TRAINED WITH PETRUS BOSMAN AT VIRGINIA SCHOOL OF THE ARTS, AT NEW WORLD SCHOOL OF THE ARTS AND IS CURRENTLY A FELLOWSHIP STUDENT AT THE AILEY SCHOOL. HE HAS APPRENTICED WITH COMPLEXIONS CONTEMPORARY BALLET UNDER THE DIRECTION OF DWIGHT RHODEN AND DESMOND RICHARDSON. MR. MCKINLEY HAS PERFORMED WORKS BY ALVIN AILEY, WILLIAM FORSYTHE, CHRISTOPHER L. HUGGINS, ROBERT BATTLE, AND FRANCESCA HARPER AS WELL AS WITH USHER, DAVID BANNER, AND K-CI & JOJO. THIS IS HIS SECOND

**CHANG YONG SUNG/CONTEMPORARY** CHANG YONG SUNG GRADUATED FROM DUKWON ARTS SCHOOL AND THE KOREAN NATIONAL UNIVERSITY OF ARTS. HE IS A FELLOWSHIP STUDENT AT THE AILEY SCHOOL AND PERFORMED IN ALVIN AILEY'S *MEMORIA* AT NEW YORK CITY CENTER. AS A CHOREOGRAPHER, SUNG'S WORK ENTITLED *MOMENT* WAS PERFORMED IN NEW YORK CITY AT LAMAMA THEATER AND THE DUMBO FESTIVAL AT WHITE WAVE DANCE THEATER, AND *REQ-UIEM*, CREATED FOR AILEY II, WAS PERFORMED AT THE JOYCE THEATER IN APRIL 2008 DURING THE 1-2-3 FESTIVAL AND IN APRIL 2009 AT THE AILEY CITIGROUP THEATER DURING THE COMPANY'S NEW YORK CITY SEASON. THIS IS MR. SUNG'S SECOND SEASON WITH AILEY II.



**RAYMOND "SPEX" ABBIW /HIP HOP-LOCKIN'** SPEX'S CAREER TOOK OFF AND HE APPEARED IN MUSIC VIDEOS WITH SUCH ARTISTS AS *MARIAH CAREY, JOE, LAURYN HILL, WYCLEF JEAN* AND MORE. SPEX ALSO TOURED INTERNATIONALLY IN JAPAN AND FRANCE. HE MADE HIS OFF-BROADWAY DEBUT IN THE 2002 "FULL CIRCLE PRODUCTIONS" PRODUCTION "*SOULAR POWER'D*" AT NEW YORK'S NEW VICTORY THEATER. HE CONTINUES AS A MEMBER OF THE FULL CIRCLE DANCE COMPANY TOURING THROUGHOUT THE U.S. AND ABROAD INCLUDING THE PRESTIGIOUS *KENNEDY CENTER* IN WASHINGTON, DC.

**JAMIE JACKSON/HIP HOP-JAZZ FUNK** JAMIE JACKSON IS A NEW YORK NATIVE, BORN AND RAISED IN BROOKLYN. HE HAS BEEN DANCING SINCE THE AGE OF 5 AND GOT HIS BREAK AS A CHOREOGRAPHER AT THE AGE OF 11 WHEN HE DID SOME WORK FOR THE BLOCK-PARTY IN HIS NEIGHBORHOOD. HOWEVER, WHILE FOLLOWING HIS DREAM TO BE A CHOREOGRAPHER, JAMIE TOOK A GOOD DETOUR SINGING IN THE GRAMMY AWARD WINNING LFT CHURCH CHOIR UNDER THE DIRECTION OF HEZEKIAH WALKER. WHILE IN THE CHOIR JAMIE HAD THE OPPORTUNITY TO WORK WITH ARTISTS SUCH AS BABYFACE, STEVIE WONDER, PRAZ OF THE FUGEES, SHIRLEY CAESAR, AND P. DIDDY.



**DANA FOGLIA/STREET JAZZ-STILETTO HEELS** DANA HAS PERFORMED IN NUMEROUS TV AND AWARD SHOWS INCLUDING *SO YOU THINK YOU CAN DANCE, QUEER EYE FOR THE STRAIGHT GUY, MTV VMA AWARDS, TEEN CHOICE AWARDS, AMA AWARDS, WORLD MUSIC AWARDS, BILLBOARD AWARDS, ALL MY CHILDREN, REGIS AND KELLY, DICK CLARK'S ROCKIN' NEW YEAR'S EVE, THE TODAY SHOW, GOOD MORNING AMERICA, BET 106 & PARK, NOBLE PEACE PRIZE CONCERT, JIMMY KIMMEL, CARSON DALY AND JAY LENO SHOWS.* YOU MAY HAVE SPOTTED HER DANCING SIDE BY SIDE WITH BEYONCE IN "SINGLE LADIES" AT THE WORLD MUSIC AWARDS. DANA HAS APPEARED IN NUMEROUS COMMERCIALS INCLUDING HAAGEN DAAZ AS A PRINCIPAL DANCER

**KURT "CORRADO" ROBINSON/ALL LEVELS VOICE** KURT'S CLIENTELE HAVE ENJOYED THRIVING PERFORMANCES IN SOME OF THE HOTTEST BROADWAY PRODUCTIONS AND NATIONAL TOURS, INCLUDING *BILLY ELIOT, IN THE HEIGHTS, SPRING AWAKENING, HAIRSPRAY, WICKED, THE LION KING, TARZAN, PHANTOM OF THE OPERA, DREAM GIRLS, WEST SIDE STORY, A CHORUS LINE, PRODUCERS, CHICAGO, AND SPAMALOT.* HE HAS COACHED RECORDING ARTISTS FOR COLUMBIA ARTISTS, JIVE, DEF JAM, AND NICOLODEON LABELS.



**MIKE SCHULSTER/TAP-STREET TAP** MIKE HAS PERFORMED WITH GREGORY HINES, BRENDA BUFALINO, AND BARBARA DUFFY, AS WELL AS STUDIED WITH SAVION GLOVER AND BUSTER BROWN. MICHAEL TOURED EUROPE AS A SOLOIST IN THE SHOW 'FIRE OF DANCE'. AT JUST 15 MICHAEL WAS OFFERED A CONTRACT IN THE OFF-BROADWAY HIT 'TAP DOGS'. HE HAS PERFORMED AT THE INTERNATIONAL "GOODWILL GAMES" AS WELL AS THE 2000 NBA PLAYOFFS AT MADISON SQUARE GARDEN. IN ADDITION, HE HAS DONE CHOREOGRAPHY FOR HILTON HOTELS, AMERICAN EXPRESS, AND SHOWTIME CABLE NETWORK. MICHAEL CAN BE SEEN IN E\*TRADE'S SUPERBOWL COMMERCIAL CAMPAIGN, ENTITLED "I WANNA DANCE". HE IS CURRENTLY TE



# FINALE

## SCHEDULE OF EVENTS \*

### Thursday:

Arrival in New York City.

- Check in at the Marriot Marquis and meet with Group Liaison, and receiving of competition packet and Broadway Tickets. (on pre-arranged time with Finale officials)

Daytime Activities are on your own.

5:00pm

- Included dinner at Pre-Arranged Location.

7:30pm:

- Broadway Musical/Play

### Friday:

9:00am-3:00pm:

- Performing Arts Seminars
- Sound Check/Stage time for each competitive group. Times will be based on response and distance traveled.

8:00pm:

- Dance/Pizza party for all participants

### Saturday:

9:00am-5:00pm:

- Prelim performances for all competitive Divisions

5:30pm

- Prelim Awards
- Announcement of Finals Groups
- Unisex, JV, Solo, Middle School Grand Champion Awarded

6:00pm-11:00pm

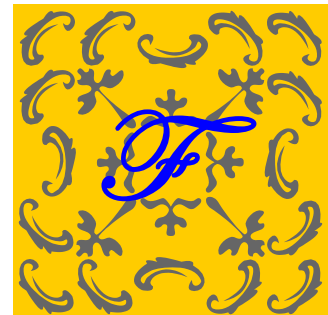
- Finals Performances for Small and Large Divisions

11:15pm

- Finals Awards

### Sunday:

Head home with many happy memories!!



\* Schedule based on 4 day, 3 night package,  
and subject to change **PAGE 7**

# FINALE

## PACKAGE INFORMATION

FINALE NATIONAL SHOW CHOIR CHAMPIONSHIPS AND PERFORMING ARTS SEMINARS IS A UNIQUE EXPERIENCE FOR YOUR GROUP. EACH PACKAGE THAT IS OFFERED IS DESIGNED TO MAXIMIZE THE EXPERIENCE FOR YOUR STUDENTS IN NEW YORK CITY, WHILE ALSO HELPING FURTHER THEIR EDUCATION. FOR YOUR CONVENIENCE AND THE CONVENIENCE OF THOSE WHO WILL BE TRAVELING WITH YOU, FINALE OFFERS MANY DIFFERENT OPTIONS TO TAILOR YOUR EXPERIENCE. ALL PACKAGES INCLUDE ACCOMMODATIONS AT THE MARRIOTT MARQUIS IN THE HEART OF TIMES SQUARE.



### PERFORMER PACKAGE 1

#### 4 DAYS, 3 NIGHTS

(THURS. CHECK IN, SUN. CHECK OUT)

ENTRANCE TO ALL PERFORMING ARTS SEMINARS  
1 TICKET TO A BROADWAY MUSICAL/PLAY  
1 DINNER INCLUDED  
FRIDAY NIGHT DANCE ENTRANCE  
PIZZA DINNER AT DANCE ON FRIDAY  
ENTRANCE TO ALL PRELIM PERFORMANCES  
ENTRANCE TO ALL FINALS PERFORMANCES  
SOUVENIR T-SHIRT  
SOUVENIR IDENTIFICATION LANYARD/PASS

PRICE: \$629.00\*

ORDER #: 2301

TYPE: PERFORMER

### SPECTATOR PACKAGE 1

#### 4 DAYS, 3 NIGHTS

(THURS. CHECK IN, SUN. CHECK OUT)

1 TICKET TO A BROADWAY SHOW  
1 DINNER INCLUDED  
ENTRANCE TO ALL PRELIM PERFORMANCES  
ENTRANCE TO ALL FINALS PERFORMANCES  
SOUVENIR IDENTIFICATION LANYARD/PASS

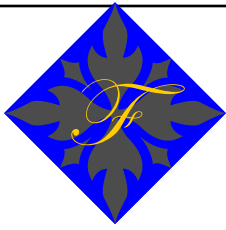
PRICE: \$529.00\*

ORDER #: 2401

TYPE: SPECTATOR







# FINALE

## NATIONAL SHOW CHOIR CHAMPIONSHIPS AND PERFORMING ARTS SEMINARS

FOR THOSE LOOKING FOR A PROLONGED EXPERIENCE IN  
NEW YORK, FINALE OFFERS THE FOLLOWING EXTENDED  
PACKAGES.

**PERFORMER PACKAGE 2**  
**5 DAYS, 4 NIGHTS**  
 (WED. CHECK IN, SUN. CHECK OUT)  
 Includes everything in Package 1, and:  
  
 1 Ticket to Broadway Musical/Play (Wed. Night)



**PRICE: \$729.00**  
**ORDER #: 2302**  
**TYPE: PERFORMER**

**SPECTATOR PACKAGE 2**  
**5 DAYS, 4 NIGHTS**  
 (WED. CHECK IN, SUN. CHECK OUT)  
 Includes everything in Package 1, and:  
 1 Ticket to a Broadway Musical/Play (Wed. Night)  
 Entrance to Dave and Busters



**PRICE: \$629.00**  
**ORDER #: 2402**  
**TYPE: SPECTATOR**

\* New Jersey Option: (Includes all package options)

4 Days, 3 Nights

Performer Package: \*\*\$539.00

Spectator Package: \*\*\$439.00

\*\*Per person based on quad occupancy. Finale Producers reserve the right to choose hotel location.



PERFORMANCE ONLY TICKETS  
 ENTRANCE TO PRELIMS ONLY  
 OR  
 ENTRANCE TO FINALS ONLY

PRICE: \$25.00  
 ORDER #: 2505  
 TYPE: GENERAL

All Day Pass

\$35.00

# FINALE

## BROADWAY MUSICAL/PLAY OPTIONS

### DINING OPTIONS

(ALL SHOW OPTIONS ARE SUBJECT TO AVAILABILITY. PLEASE RESPOND QUICKLY TO GUARANTEE SELECTION)

#### BROADWAY MUSICAL/PLAYS

(CHOOSE 1 AND AN ALTERNATE)

- WICKED
- LION KING
- JERSEY BOYS
- MAMMA MIA
- PHANTOM OF THE OPERA
- MARY POPPINS
- CHICAGO
- WEST SIDE STORY
- BLUE MAN GROUP
- STOMP
- SHREK: THE MUSICAL

#### DINING OPTIONS

- ESPN EXPERIENCE
- OLIVE GARDEN TIMES SQUARE
- HARD ROCK CAFÉ
- DAVE AND BUSTERS
- T.G.I. FRIDAYS
- MARS 2112

(DINING OPTIONS SUBJECT TO AVAILABILITY)



# FINALE

## PACKAGE PAYMENT SCHEDULE

A \$500 per performing group registration fee is due immediately to guarantee participation. After the receipt of this fee, Finale producers will send a secondary packet of information to the school/director with detailed information on rules and format of the competition. The \$500 fee will be deducted from your total amount due. Group performance times will be based on the receipt of this registration fee (last in gets the earliest slot).

Any person 18 years of age or younger participating in the performance of the show, on stage, in the combo/pit or as part of the stage crew (during the actual performance, not set up/tear down), is considered to be a performer and must pay the performer package price. Parents/Students older than the age of 18 and participating in the set up/tear down of the performance are classified as a spectator and must pay the spectator packaging price. General admission tickets sold at the door will not be eligible to help/participate in the performance or the set up/tear down of the performance in any way. Spectator packages will be permitted access to, but cannot participate in, the performing arts seminars at the Alvin Ailey American Dance Center. Passes must be shown at the entrance of every event to gain access. 1 Free director Package will be included for every performing group.

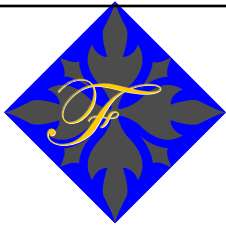
<u>Payment</u>	<u>Deadline Date Due</u>	<u>Method Accepted</u>
Registration Fee:	Immediately	Certified Funds/PayPal/CC
1st Payment ( 1/3 total for all groups performing)	Nov. 5th, 2010	Certified Funds/PayPal/CC
2nd Payment (1/3 total for all performing Groups)	Jan. 21st, 2011	Certified Funds/PayPal/CC
3rd Payment (1/3 total for all performing Groups)	Mar. 4th, 2011	Certified Funds/PayPal/CC

Payment in full can be made at anytime. Individual packages will only be available for Spectators via the Finale Web site.

Performer Packages will only be available in the group format. Any group paying entire balance in full before or on October 1st, 2010, will receive a 10% refund on the \*overall package pricing! Registration fees are non refundable. Cancellation by a performing group will be refunded on a decreasing % schedule. Cancellations after November 5th, 2010 will be entitled to a 60% refund, after January 27th 2011 no refunds will be awarded. All refunds are subject to approval by Finale National Show Choir Championships producers and are not guaranteed. Even if you will be paying online via the Finale Web Site, please complete and return the form on the next page for record purposes. If paying by certified funds or credit card by mail, please include all information with the form, photocopy of photo identification of the authorized user, photocopy of credit card being used (if applicable) and 2 contact phone numbers. By signing the form you are acknowledging that you are a primary decision maker for the performing group, and will adhere to the payment schedule.



\*Discount will be refunded in check form at registration table of the Finale event. Full Payment must be received for all performers and spectators of registered group before or on October 1st, 2010 to be eligible for discount/refund.



# FINALE

## NATIONAL SHOW CHOIR CHAMPIONSHIPS AND PERFORMING ARTS SEMINARS

Order #	Type of Package	Qty.	Price	Subtotal
---------	-----------------	------	-------	----------

---



---



---

Registration Fee \$500/Group

Broadway Musical/Play Choice (Can be chosen at a later date): \_\_\_\_\_

Dinner Location Choice (Can be chosen at a later date): \_\_\_\_\_

Order total: \_\_\_\_\_

Name \_\_\_\_\_

Group (s) Name \_\_\_\_\_

Address \_\_\_\_\_

School Name \_\_\_\_\_

Phone \_\_\_\_\_

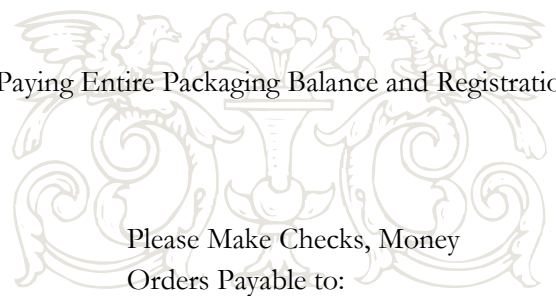
Please Check One:

Paying Registration Only Today

Paying Entire Packaging Balance and Registration

Method of Payment

- Cashiers Check
- Credit Card A
- Credit Card B
- Money Order



Please Make Checks, Money  
Orders Payable to:

Mind's Eye Conceptions

Credit Card # CCV# Exp. date

Signature \_\_\_\_\_

Complete and mail to : Mind's Eye Conceptions

1216 Hardesty Blvd, Akron, Ohio 44320