



Board Meeting: January 12, 2026

Title: Secondary Math Courses: Acceleration Math Sequence Adjustments

Type: Discussion

Presenter(s): Jody De St. Hubert, Director of Teaching and Learning; Mark Carlson, K-12 Science and Mathematics Coordinator; and Margaret Schlukebier, Valley View Mathematics Teacher

Description: Edina Public Schools remains committed to providing rigorous math pathways for all students. To maintain this standard of excellence and ensure full compliance with the updated Minnesota State Academic Standards, the Math Design Team has recommended a structural update to our acceleration model.

The Administration recommends discontinuing the middle school "Compacted Algebra" course beginning in the 2026-2027 school year. It will be replaced by a course sequence that compacts three years of courses into two years at the high school level. This course sequence, two classes in three years, will be recommended to begin in the 2027-2028 school year and will be reflected in the Secondary Courses General Add/Change Recommendations in the fall of 2026 (next fall). This change ensures all students will have the same opportunities for acceleration as current math pathways provide.

Recommendation: Review the secondary math sequence proposed adjustments, and come prepared with reactions (comments and questions) on the proposal.

Desired Outcomes from the Board: Discuss the math sequence adjustments that are proposed. The adjustments that impact registration for the 2026-2027 school year will be reflected in the January 12th Board Meeting in the 2026-2027 Secondary Courses General Add/Change Recommendations

Appendices:

- A. Current Pathways
- B. Proposed Pathways
- C. Frequently Asked Questions

Background: The new Minnesota K-12 Academic Standards in Mathematics represent the first major revision since 2007. Full implementation of these new standards is required by the 2027-2028 school year. A new Minnesota Comprehensive Assessment (MCA) will be given to students on these standards in the spring of 2028. These proposed changes are a step towards meeting this requirement and preparing students for this new assessment.

These new standards have triggered a comprehensive review of K-12 math programming in Edina Public Schools. The School Board will receive a full report on the entire design process during scheduled upcoming meetings including a T & L Board Committee Meeting on February 10th, a board work session on February 17th and board meetings on March 9th and April 13th. However, to align with the course registration process for the 2026-27 school year we are bringing this proposal to you ahead of this comprehensive report.

Proposed Update: Upon the recommendation of the Secondary Math Design Team, administration is proposing to discontinue the middle school course "Compacted Algebra" starting in the 2026-27 school year. To offset the loss of this acceleration opportunity the Math Design Team will create a pathway, compacting 3 years of high school courses (Intermediate Algebra, Geometry, and Algebra 2) into a new, two course sequence. It is important to note, there will be no loss of acceleration opportunities for any student.

Rationale: The Secondary Math Design Team conducted a comprehensive review of new standards beginning in the spring of 2025. The review identified critical sustainability issues with the current acceleration model:

1. **Current Pacing Pressure:** The current "Compacted Algebra" course compresses two full years of standards (8th grade Algebra 1 and 9th grade Intermediate Algebra) into a single year. This course already moves at an extremely fast pace for teachers to ensure all current standards are taught.
2. **Impact of New Standards:** The new state standards place a significant emphasis on Data Analysis. This load impacts both Algebra 1 and Intermediate Algebra courses. Under the current model, these additional standards would be forced into the already standards saturated "Compacted Algebra" course.
3. **Student Best Interest:** The Team determined that adding this volume of new content to a single-year course is not in the best interest of ensuring a solid foundation of learning for Edina students.

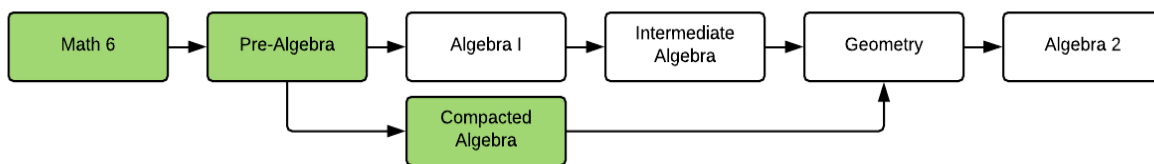
Current Pathways: There are 6 years of secondary math standards in Minnesota (6th-11th Grade). EPS has been able to provide pathways for students to complete these standards in between 3 and 6 years. There are three possible opportunities built into math programming for students to accelerate.

- 6th grade starting point, based on K-5 math experiences.

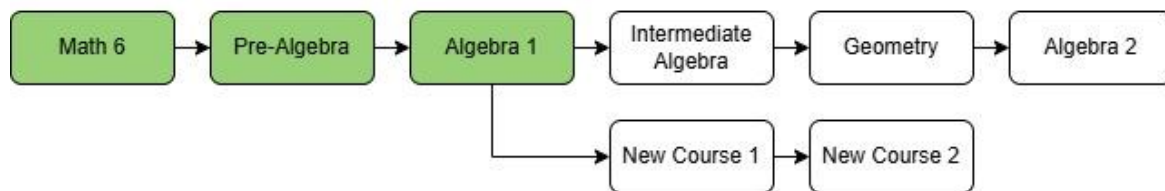
- Compacted course(s).
- Taking more than one math course in the same year in high school.

This proposal would replace one Compacted course with a different compacted series of two new courses. This new opportunity will occur after the foundational course of Algebra 1 instead of after Pre-Algebra. Three opportunities to accelerate will still be in the system. Below are diagrams that represent how students can meet secondary math standards under both the old and new pathways. A more detailed map of pathways are provided in appendices A and B.

Current Pathways:



Proposed Pathway:



*Completion of New Course 2 or Algebra 2 complete the MN State Standards

*New Course 1 & 2 will contain all standards from Intermediate Algebra, Geometry and Algebra 2

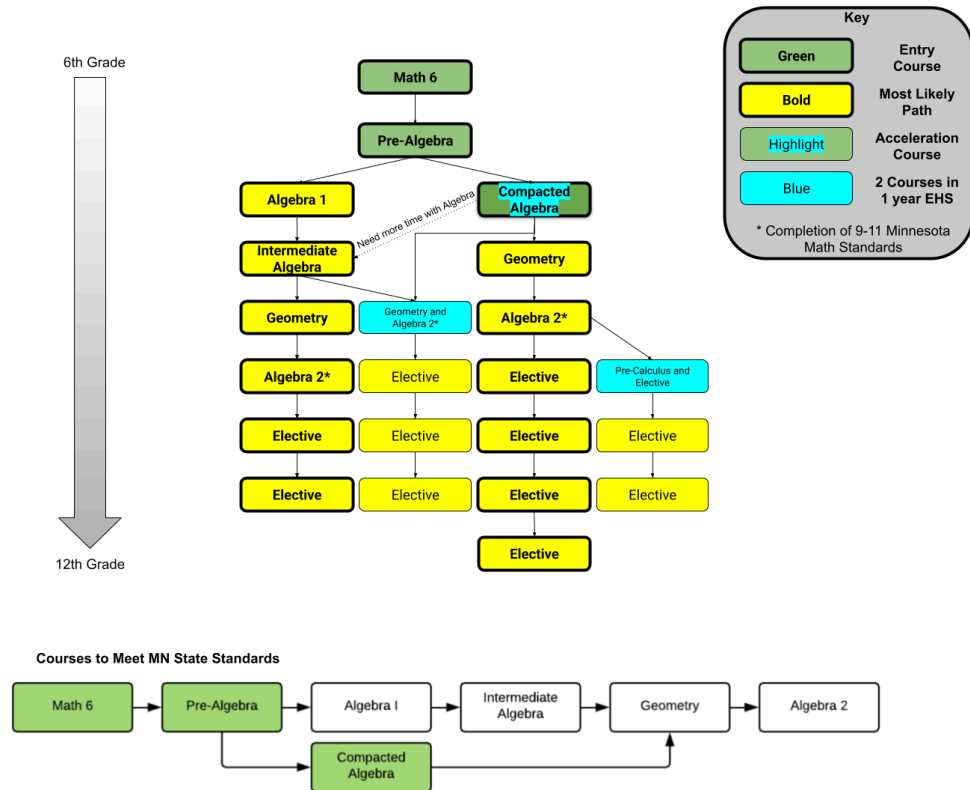
Communication Plan: In order to ensure a smooth transition to this change Teaching and Learning will work with building level administration to ensure all stakeholders are informed of this update. The following steps will be taken:

- Teaching and Learning will work directly with elementary and middle school building administration to ensure understanding of the change and that the registration materials have the updated course information.
- Teaching and Learning and/or Math Design Team members will ensure all 5th grade teachers are aware of this change.
- Math Design Team members will ensure all math teachers are aware of this change.
- A communication will be sent to families of all current Pre-Algebra students.
- A communication will be sent to all 5th grade families.

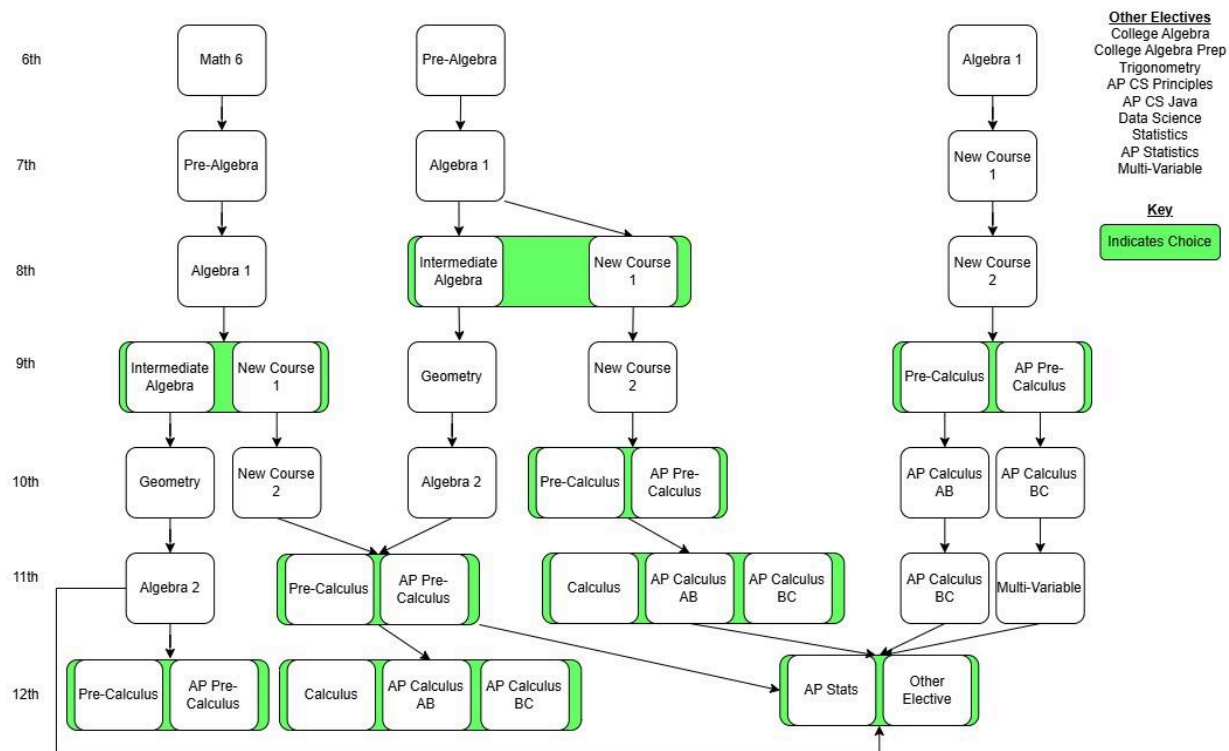
Appendix A - Current Pathways

Mathematics Pathways

Electives towards Math Requirement
After Algebra 2
Pre-Calculus
College Algebra Prep
College Algebra
Intro to Math Sciences
AP Statistics
Discrete Math Concepts
Discrete Math Applications
AP CS JAVA programming
After Pre-Calculus
Calculus
Calculus AB
Calculus BC
After Calculus BC
Multivariable Calculus
Electives
Do not meet math requirements
Algebra I
Geometry Support (With Geometry)
Advanced Algebra Support (With Advanced Algebra)



Appendix B - Proposed Pathways



Note: A student can take two math courses in one year at EHS in certain situations to accelerate pathways.

Appendix C - Frequently Asked Questions

Frequently Asked Questions: Math Pathway Updates

1. Is my child "losing" a year of acceleration?

No. While we are removing the one-year "Compacted Algebra" course, we are replacing it with a more robust two-year sequence. Students will still reach the same high-level electives by their junior or senior year. We are simply spreading the acceleration across two years to ensure students master the new, more rigorous state standards.

2. Why can't we just keep Compacted Algebra?

The new Minnesota state standards have significantly increased the requirements for Data Analysis. Trying to fit both 8th-grade Algebra and the new 9th-grade Intermediate Algebra standards into a single year would be difficult for educators to provide high quality instruction on all standards. We want students to have a deep understanding of all math standards.

3. My child is currently in Pre-Algebra. What happens to them next year?

For the 2026-27 school year, students finishing Pre-Algebra will move into Algebra 1. In the following year (2027-28), they will have the opportunity to enter the new accelerated sequence (3 years of standards in 2 years). This ensures they don't miss the critical foundational skills required by the new state standards.

4. How does the "3 years of math in 2 years" work?

The new sequence takes the content of Intermediate Algebra, Geometry, and Algebra 2 and blends them into two year-long courses (New Course 1 and New Course 2).

- The Benefit: Students still "save" a year in their schedule, but the instruction is balanced more effectively across 2 years.

5. Will this change affect college applications or "Calculus by Senior Year"?

No. The most advanced pathways still exist.

- Students on the 5-year pathway will still complete Algebra 2 by the end of 10th grade.
- Students on the 4-year pathway will still complete Algebra 2 by the end of 9th grade.
- Students on the 3-year pathway will still complete Algebra 2 by the end of 8th grade. The "ceiling" for math achievement in Edina remains exactly where it is today; we are only changing the "bridge" used to get there.

6. Why are the new courses not available until 2027-28?

All students who are currently in Algebra 1 and above have already had an opportunity to take Compacted Algebra as an accelerated pathway and anyone that is currently in Pre-Algebra or below will need to take Algebra 1 prior to taking the new pathway therefore there is not a need for the pathway next school year. This gives the Math Design Team time to create these two new courses.

6. Will there still be three classes offered to incoming 6th grade students?

Yes. EPS will be offering three courses in 6th grade; Math 6, Pre-Algebra and the third course will be Algebra 1. The process for 5th to 6th grade math recommendations will be the same, the students who in the past were recommended Compacted Algebra will now take Algebra 1 instead all students will have the same opportunities for acceleration as they have had in the past.