



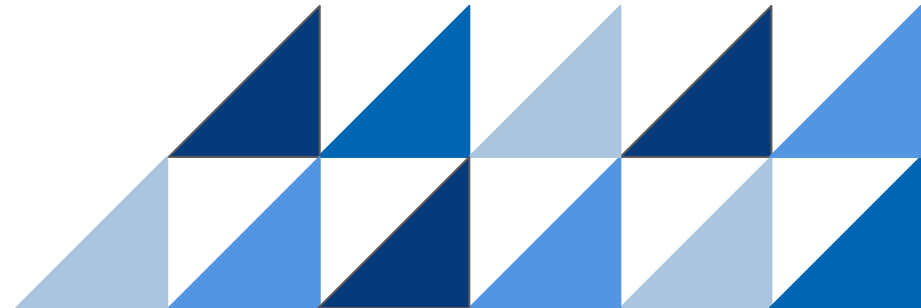
Denton Digital

Presentation to the Board of Trustees
February 2026

Why Denton Digital?



*Excellence in Student Outcomes
Reciprocal Family & Community Partnerships
Exceptional Workplace Environment
Responsible Fiscal Stewardship*



SB 569 - Definitions

Virtual Campus

At least 50% of students
at a campus are
enrolled in virtual
program.

Requires 1 year of
planning and
commissioner approval.

Virtual Program

<50% of campus
students are enrolled.

Student primarily
receives instruction via
internet

Course Only

Student is in attendance
for the course in person
<90% of the time;

Instruction is delivered
synchronously or
asynchronously over the
internet





Program Design





Denton Digital K-5

Denton Digital K–5 is a full-time virtual elementary program serving Denton ISD students in grades K–5 who enroll through Stephens Elementary. The program delivers instruction through a balanced combination of synchronous and asynchronous learning using district-adopted, TEKS-aligned curriculum designed for virtual delivery. Instruction is provided by a dedicated team of Stephens Elementary teachers organized by grade band and content area, with campus leadership provided by the principal and support from the Digital Program Coordinator. Students may enroll in or exit the program at designated grading periods, and daily attendance is required and counts toward ADA.

Pre Kindergarten

Home Campus
Hodge

Virtual Campus
n/a

5th Grade Bilingual

Home Campus
Newton Rayzor

Virtual Campus
Stephens

2nd Grade
New to DISD

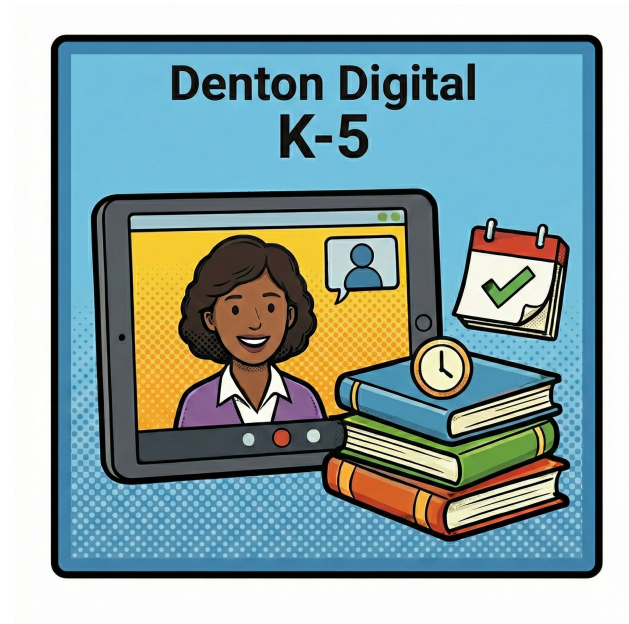
Home Campus
Blanton

Virtual Campus
Stephens

3rd Grade w/IEP

Home Campus
Sandbrock Ranch

Virtual Campus
Stephens





Denton Digital 6-12

Denton Digital 6–12 is a full-time virtual program for students in grades 6–12 that offers a full-time instructional experience while allowing for optional limited on-campus course participation. This program is intended for students who wish to enroll in a full-time virtual learning model, and also for students who want the virtual model but also want to remain connected to their home campus for 1-2 select electives or academic courses. Instruction is delivered primarily through asynchronous learning with scheduled synchronous office hours, using district-adopted, TEKS-aligned curriculum adapted for virtual delivery. The program follows the Denton ISD academic calendar, and daily attendance is required and monitored.



8th Grade
Competitive Gymnast

Home Campus
Rodriguez MS

Virtual Campus
Rodriguez MS

6th Grade
Percussionist

Home Campus
Calhoun MS

Virtual Campus
Calhoun MS

10th Grade
504 Accommodations

Home Campus
Guyer HS

Virtual Campus
Guyer HS

12th Grade
5th Block Dismissal

Home Campus
Billy Ryan HS

Virtual Campus
Billy Ryan HS



Denton Digital Original Credit

Denton Digital Original Credit is a single-course virtual offering for high school students in grades 9–12. This option is intended for students who wish to accelerate learning or create flexibility in their face-to-face schedule by taking individual original credit courses online up to 2 credits per year. Instruction is delivered primarily through asynchronous learning with scheduled synchronous office hours. Students typically complete work independently outside the regular instructional day, though campuses may approve scheduled school-day time, when available. Enrollment follows standard district semester timelines. This option is also offered in the district’s Summer Learning program. *(Program fees may apply.)*

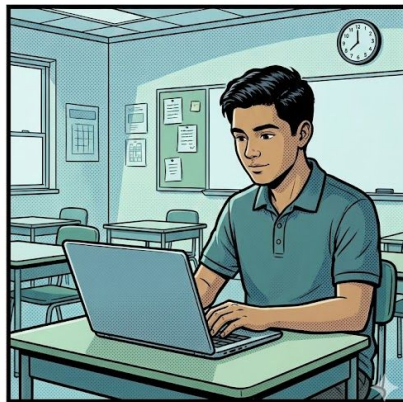




Denton Digital Credit Recovery

Denton Digital Credit Recovery is a single-course virtual offering for high school students in grades 9–12, intended for students who need to recover up to 3 credits per year for previously attempted courses in order to remain on track for graduation. Instruction is delivered primarily through asynchronous learning with scheduled synchronous office hours. Students typically complete work independently outside the regular instructional day, though campuses may approve scheduled school-day time when available.

Enrollment begins at the start of each semester, and course pacing is guided by diagnostic assessment results, which may allow students to finish a course before the end of the term. This option is also available at no cost during the district's Summer Learning program.





Questions?