



Oak Park Elementary School District 97



Brooks Middle School
Home of the Eagles



Site Improvements



Oak Park Elementary School District 97

Altamanu Inc.
landscape architecture + urban design + planning



Site Context:

RESIDENTIAL
NEIGHBORHOOD



Site Context:

CONDITIONS

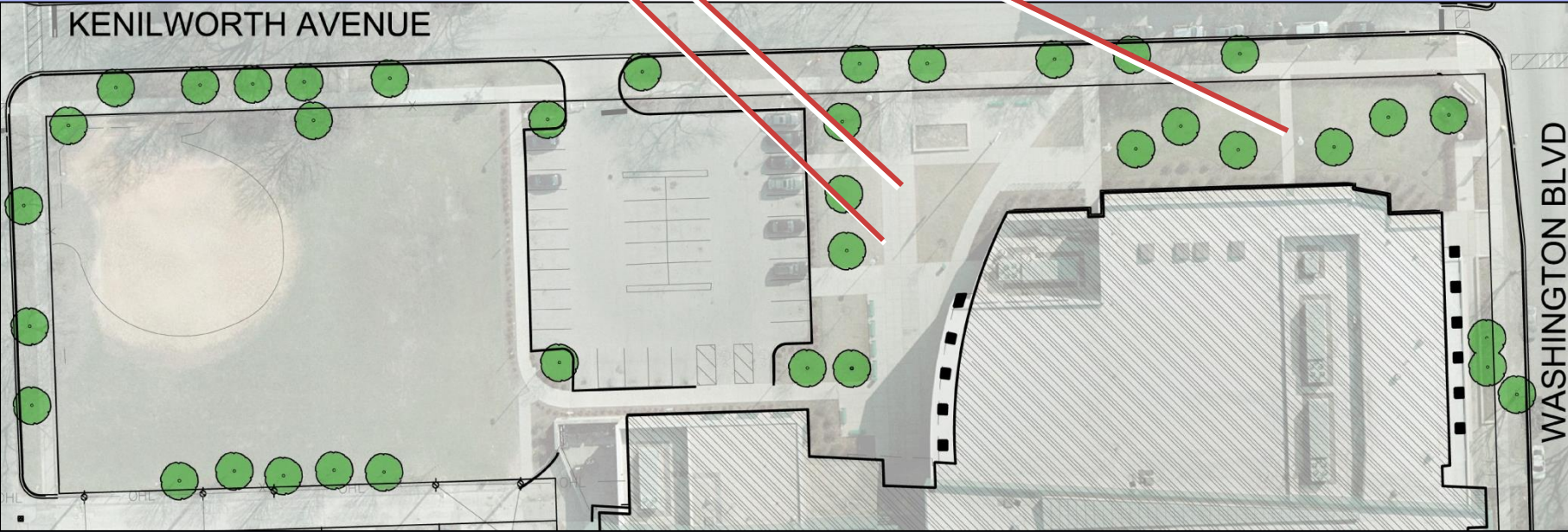
- Field
- Tight East Entry
- Underutilized Area
- Courtyard

↑ Entry Points / Circulation



Site Context:

- Underutilized Area
- Narrow East Entry
- Eroded edge



Site Context:

CONDITIONS



Typical eroded edge along sidewalk



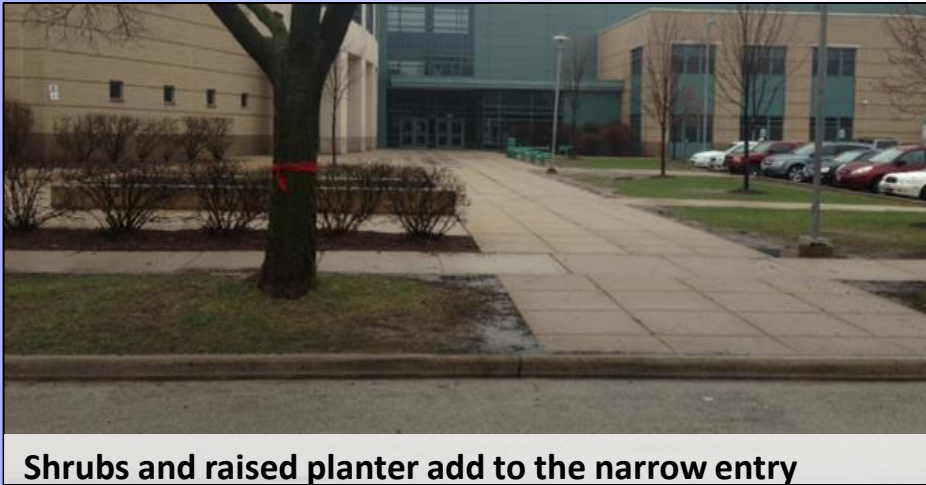
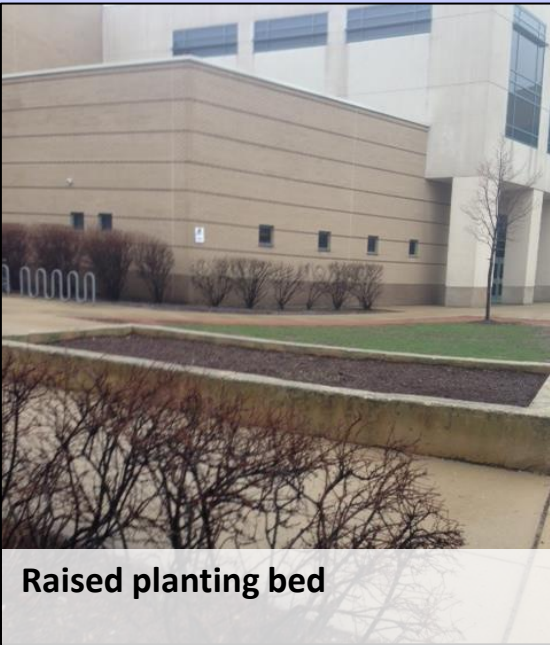
Entry limited by raised planters and turf areas



Unused area, separated by shrub from circulation route

Site Context:

CONDITIONS



Site Context:

CONDITIONS

- **Narrow East Entry**
- **Underutilized East Area**

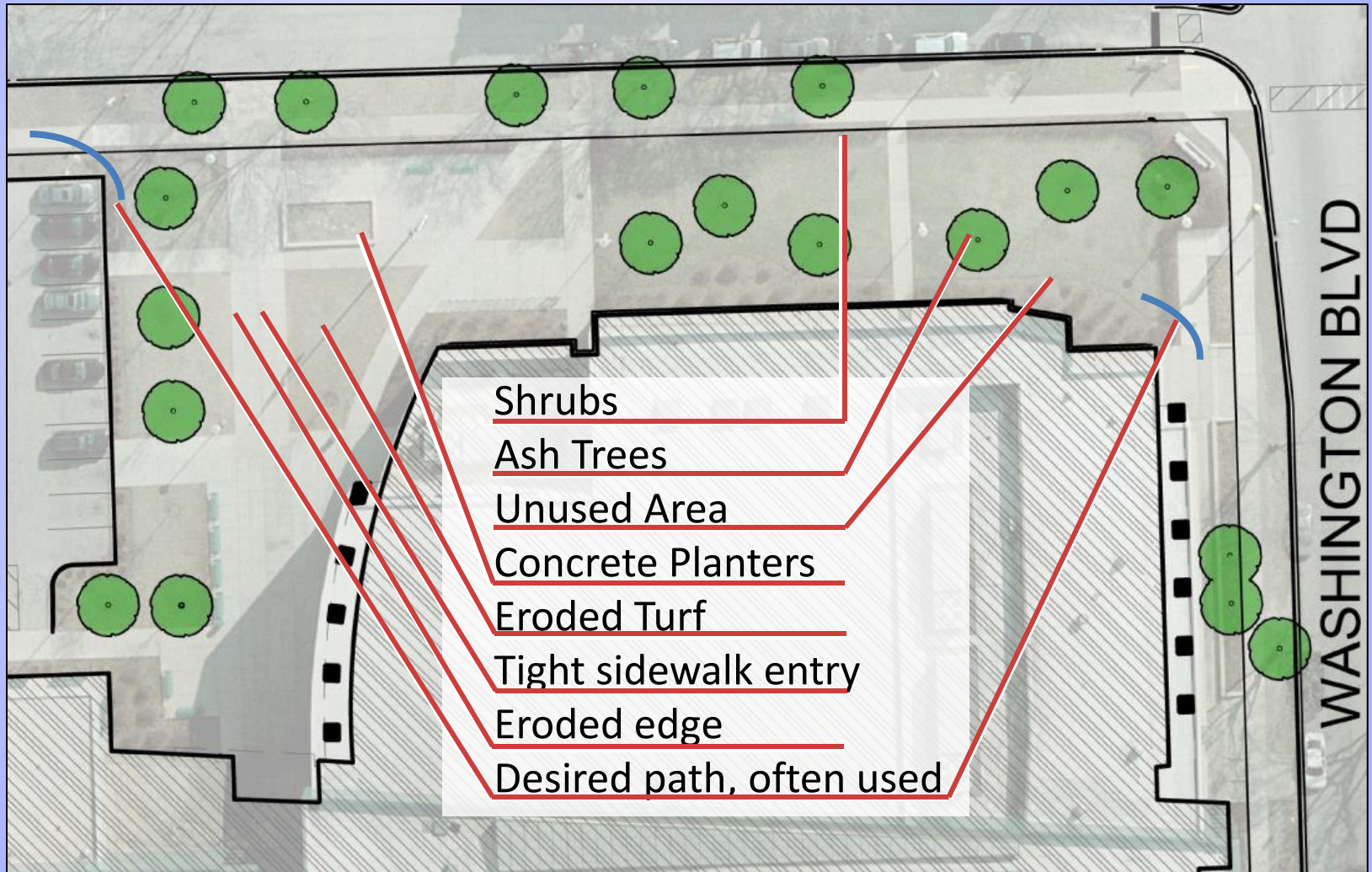


Building Entry is pinched between raised planters and muddy/eroded turf areas

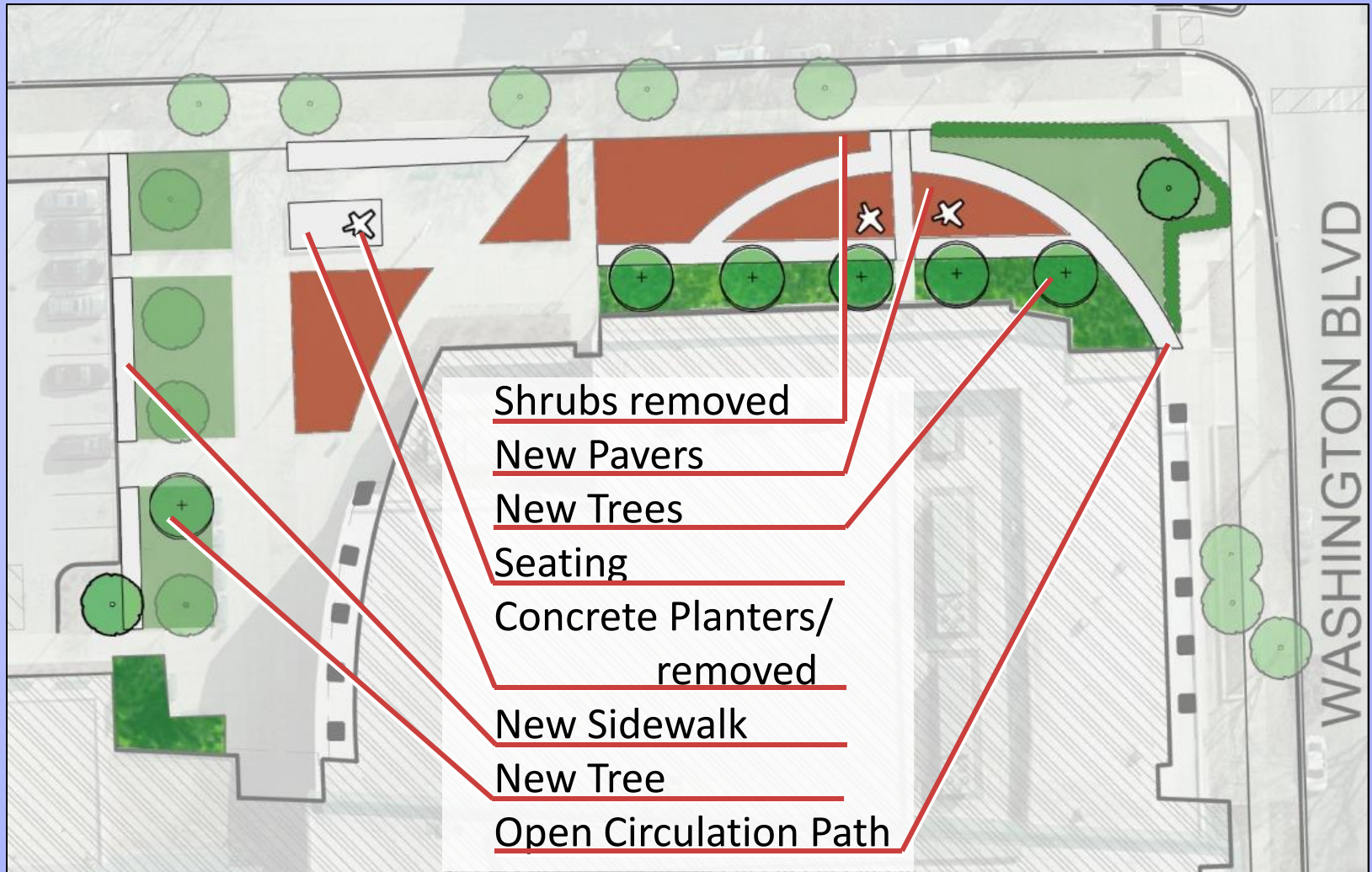


Existing shrub separates a potential gathering area from the circulation route

Existing Site:

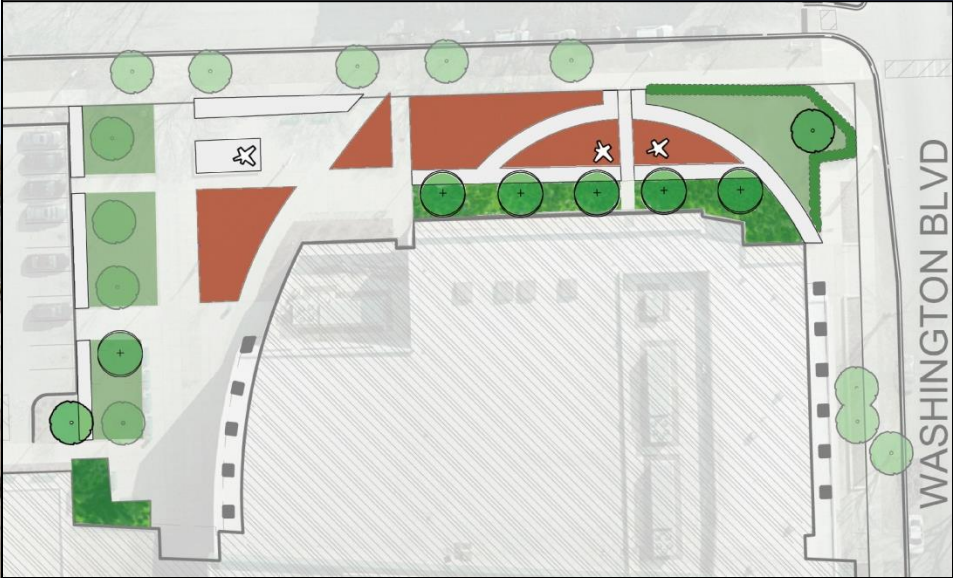


Proposed Site:



Site Amenities:

- Added Gathering Space
- Connected Entries
- Added Seating
- Paved Desired Routes



Site Amenities:

- Concrete Paver Surface



Site Amenities:

- Flor Star Bench
Size : 106" x 97"
Material : Precast Concrete
Color options -



Questions/Comments

