

Fort Smith Public Schools

FACILITY ASSESSMENT STUDY RESULTS

January 8, 2018

FORT  SMITH
PUBLIC SCHOOLS

PROCESS

ASSESSMENT PIECE OF MASTER PLAN



DISTRICT ASSESSMENT



USING THE ASSESSMENT INFORMATION

- The district wide assessment is a “snap shot in time” a comprehensive look at the district
- The report provides a “road map” and a planning tool for future needs, planning and upgrades
- This report with a master planning schedule provides the district maintenance plan for the future

FACILITY ASSESSMENTS

OVERALL FINDINGS

- Average original facility age is **63 years** (not including additions or renovations)
- Average condition is “Fair”
- Facilities are well-maintained with strong structure / “bones” in most all buildings
- Older facilities show expected life-cycle issues
- Most schools have adequate technology infrastructure in classrooms



ASSESSMENT TEAM



– Architecture

- Corgan
 - Steve Hulsey
 - Eric Horstman
- Childers Architects
 - Graham Sharum
 - Chase Myska
 - Blake Mahar
 - Breck Childers



– Mechanical, Electrical, and Plumbing

- HP Engineering
 - Brandon Pinkerton
 - David Adams
 - Silva Waterson



– Technology and Security

- Crux
 - Gale Moericke
 - Jared Waller



SCORING

Methodology

– Scores are computed based on field report input from facility walkthroughs. Every campus was surveyed and scored in five categories.

– Rating Categories

- Site
- Exterior
- Interior
- Educational Adequacy
- Mechanical, Electrical, Plumbing and Security – Building Systems

– Additionally, Technology was assessed at a District-wide level.

Building Element	Type/Material	Condition	Description	Additional Comments
Building Structure/Foundation				
Foundation	Type: Slab on Grade	Good	No signs of cracking or heaving.	
Substructure - Slab - on - Grade		Good	No signs of cracking or heaving.	
Basement / Below Grade Exterior Walls		Good	No signs of cracking or heaving.	
Miscellaneous				
Superstructure				
Fireproofing		No		0
Pre-Engineered Metal building		Fair	Description Needed?	
Building Exterior Shell				
Roofing				
General Roof Condition (Visual Inspection)		Poor	Roof is in poor condition requiring immediate corrective action. Significant leaks and damage require repair.	
Roof Warranty Status				
Roofing Manufacturer / Warranty Issuer				
Years Remaining in Warranty Period				
Skylights		NA		0
Roof Curbs / Openings / Misc.		Good	Description Needed?	
Exterior Walls				
Exterior Wall Material	Material: Brick	Fair	Minor cracks apparent, but no signs of settling, rotation or damage.	
Building Caulking/Sealant		Good	Almost new condition.	
Exterior Painting		Poor	Damaged, worn, faded, corroded, or severely stained. Recommend new paint.	
Windows/Glazed Walls				
Windows	Glazing Type: Insulated Frame Type: Aluminum	Good	No visible damage, proper weatherproofing applied.	
Exterior Door Systems				
Exterior Doors				
	Frame Type: Aluminum Stained Panel Type: Hollow Metal	Good	No visible damage, proper weatherproofing/finish.	
Exterior Overhead Doors	Type: Manual	Fair	Minor wear and tear visible, may need a fresh coat of paint.	
Card Access Reader				
Door Bell				
Peep Hole				
Canopies				
Canopy	Type: Free-standing Stru	Fair	Minor wear and tear visible, may need a fresh coat of paint. Repair of minor cracks, rotting or missing.	
Loading Area				
Raised Loading Dock		NA		0
Independent Loading Area		Poor	Severe damage visible, signs of settling or movement.	
Misc. Exterior				
Exterior Soffit - Material	Material: Metal	Fair	Minor to moderate signs of age/wear, minimal staining or corrosion visible.	
Exterior Louvers / Sunscreens		Good	Almost new in appearance.	

Scored Categories:	16
Good	7
Fair	5
Poor	3
NA	2

Aggregate Score:	71
------------------	----

SCORING METHODOLOGY

– **Good : 80 or above**

- This description is for items that meet code, are functional and show some wear. A new facility would score 100.



Good

– **Fair : 79-65**

- A fair score means that the item shows wear, may not meet current codes, and has some serviceable life left. These items are considered to have some years of serviceable life remaining.



Fair

– **Poor : 64 and below**

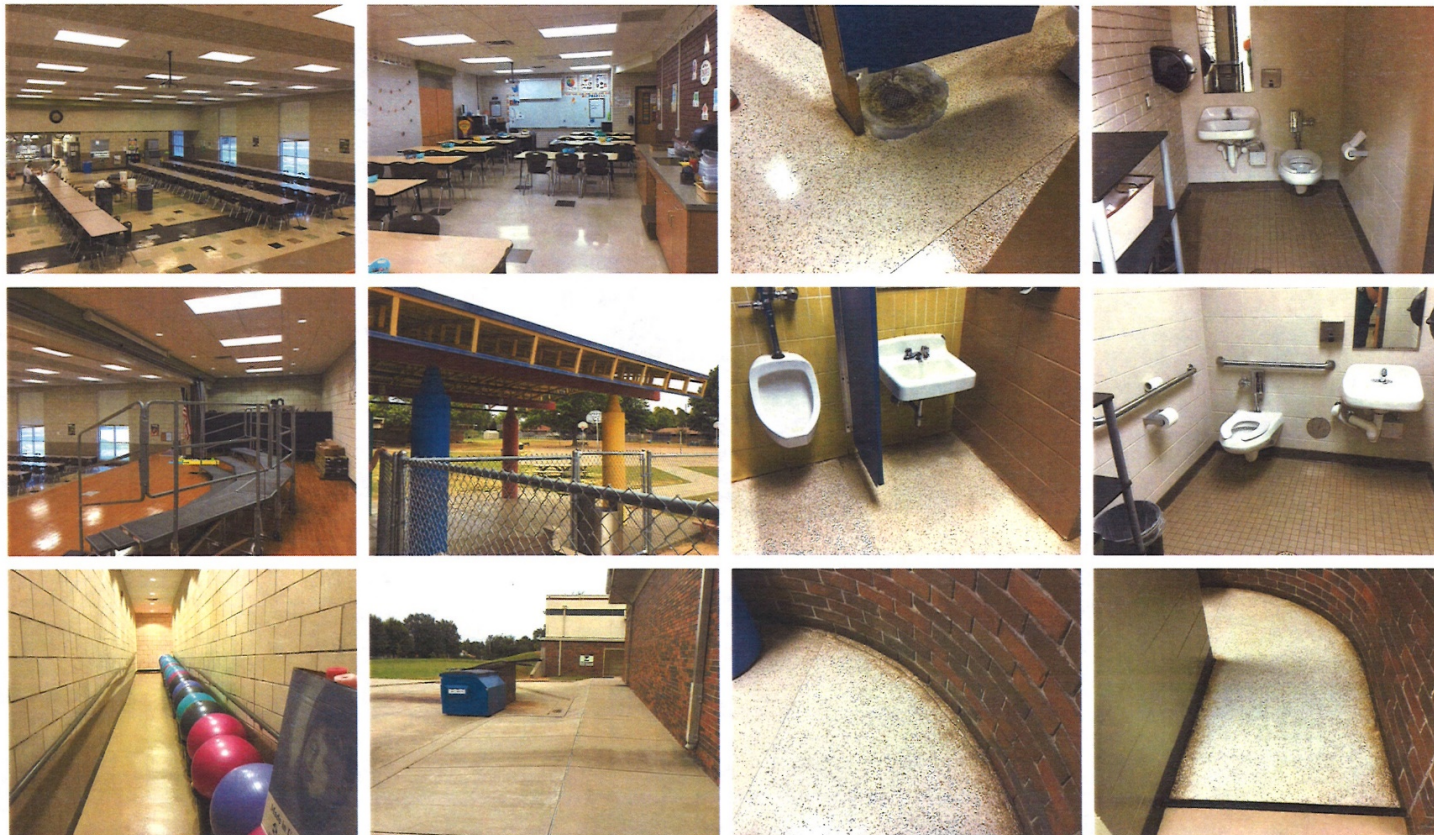
- Poor can be considered a “below standard” grade, and replacement or repair may be considered in the near future.



Poor

RECORD PHOTOGRAPHS

- Photographs taken on the site visits are a record of the conditions observed at that facility on that day.



ASSESSMENT RESULTS

- **Facility ratings are not the same as academic ratings.**
 - The condition of the physical environment is important to facilitate the educational environment; however a school can perform very well academically even if the roof needs replacing because it is near the end of its expected lifespan.
- **Facility ratings help plan for the future.**
 - Our district is being proactive by looking ahead at overall district needs, rather than reacting to individual problems as they arise.
 - Long term facility planning includes looking at enrollment, facility use, changing curriculum and delivery methods, as well as being fiscally responsible with existing as well as planned resources.
 - The focus is not to eliminate schools, rather to make better use of all facilities and optimize the educational environment within the budget.
- **Our schools average a “Fair” facility rating.**
 - The majority of schools in Fort Smith PS are meeting facility standards, have remaining service life, and are not in need of repairs.

FACILITY ASSESSMENTS

Score		
80 and above		good
79- 65		fair
64 and below		poor

ELEMENTARY SCHOOLS

	SCHOOL NAME	SITE	EXTERIOR	INTERIOR	EDUCATIONAL	
					ADEQUACY	MEP SYSTEMS
Elementaries						
1951	BALLMAN ELEMENTARY	67	64	60	50	25
1974	BARLING ELEMENTARY	76	85	73	50	50
1968	BEARD ELEMENTARY	79	45	63	50	25
1962	BONNEVILLE ELEMENTARY	60	67	61	50	75
1962	CARNALL ELEMENTARY	95	97	81	85	85
1963	CAVANAUGH ELEMENTARY	81	85	78	75	65
1976	COOK ELEMENTARY	67	56	55	85	65
1986	EUPER LANE ELEMENTARY	85	83	78	85	60
1956	FAIRVIEW ELEMENTARY	90	87	84	85	60
1949	HOWARD ELEMENTARY	85	93	83	85	85
1975	MORRISON ELEMENTARY	94	86	84	65	75
1963	ORR ELEMENTARY	64	89	66	85	85
1951	PIKE ELEMENTARY	75	77	70	75	80
1969	SPRADLING ELEMENTARY	72	86	86	80	85
1951	SUNNYMEDE ELEMENTARY	65	85	78	80	80
1958	SUTTON ELEMENTARY	84	86	85	85	80
1982	TILLES ELEMENTARY	72	86	72	80	80
1928	TRUSTY ELEMENTARY	65	55	58	50	55
1975	WOODS ELEMENTARY	72	82	75	85	70

FACILITY ASSESSMENTS

Score		
80 and above		good
79- 65		fair
64 and below		poor

JUNIOR HIGH SCHOOLS

					EDUCATIONAL	
	SCHOOL NAME	SITE	EXTERIOR	INTERIOR	ADEQUACY	MEP SYSTEMS
Junior High Schools						
1908	BELLE POINT NEW TECH (6-12)	46	45	56	50	60
1969	CHAFFIN JUNIOR HIGH	78	80	63	75	50
1923	DARBY JUNIOR HIGH	67	69	57	50	50
1964	KIMMONS JUNIOR HIGH	83	85	80	85	80
1964	RAMSEY JUNIOR HIGH SCHOOL	73	79	75	50	50

FACILITY ASSESSMENTS

Score		
80 and above		good
79- 65		fair
64 and below		poor

HIGH SCHOOLS

		EDUCATIONAL				
	SCHOOL NAME	SITE	EXTERIOR	INTERIOR	ADEQUACY	MEP SYSTEMS
High Schools						
1927	NORTHSIDE HIGH SCHOOL	63.5	65.5	65.5	56.25	70
1963	SOUTHSIDE HIGH SCHOOL	76	67	56	50	50

FACILITY ASSESSMENTS

Score		
80 and above		good
79- 65		fair
64 and below		poor

"SPECIALS"

					EDUCATIONAL	
	SCHOOL NAME	SITE	EXTERIOR	INTERIOR	ADEQUACY	MEP SYSTEMS
Specials						
1919	ADULT EDUCATION LC	52	51	54	50	75
1919	PARKER CENTER	76	58	72	N/A	90
1919	ROGERS CENTER LC	61	51	69	N/A	75
	LINCOLN ACTIVITY CENTER	65	75	60	N/A	65
	LINCOLN DAY CARE	70	75	75	N/A	65
1964	CENTRAL ADMIN BLDG A	43	62	68	N/A	80

KIMMONS JUNIOR HIGH

2201 N. 50TH STREET



ASSESSMENT CRITERIA

Educational Adequacy	85
Site	83
Exterior	85
Interior	80
MEP Systems	80

Overall Score: 82.6

CAMPUS DATA

- 1964 Original Building
- 1968, 2006 Additions
- 2011 Shelter
- **123,482 SF**
- **797 Students**

TOP CAMPUS ISSUES

- Safety and Security
- ADA issues
- Exterior Hallway Connections
- HVAC issues
- Hot and steam in dish area

CORGAN

CRUX
TECHNOLOGY • SECURITY SOLUTIONS
TECHNOLOGY • SECURITY SOLUTIONS

CHILDERS
ARCHITECT



HIGH SCHOOLS

01

NORTHSIDE HIGH SCHOOL

2301 NORTH B STREET



ASSESSMENT CRITERIA

Educational Adequacy	56
Site	64
Exterior	66
Interior	66
MEP Systems	70

Overall Score: 64

(Scores are averaged for all campus buildings)

CAMPUS DATA

- 1927 Original Building
- 15 Additions
- No Storm Shelter
- **235,229 SF**
- **1715 Students**

TOP CAMPUS ISSUES

- Safety and Security
- ADA issues
- Lots of mixed HVAC systems, older wiring systems, etc.
- Landlocked, tight site

CORGAN



CRUX
TECHNOLOGY • SECURITY SOLUTIONS
TECHNOLOGY • SECURITY SOLUTIONS

CHILDERS
ARCHITECT



SOUTHSIDE HIGH SCHOOL

4100 GARY STREET



ASSESSMENT CRITERIA

Educational Adequacy	50
Site	76
Exterior	67
Interior	56
MEP Systems	50

Overall Score: 59.8

CAMPUS DATA

- 1963 Original Building
- 14 Additions
- No Storm Shelter
- **234,017 SF**
- **1536 Students**

TOP CAMPUS ISSUES

- Safety and Security
- ADA issues
- Lots of mixed HVAC systems
- Site drainage

CORGAN



CRUX
TECHNOLOGY • SECURITY SOLUTIONS
TECHNOLOGY • SECURITY SOLUTIONS

CHILDERS
ARCHITECT



BELLE POINT NEW TECH

1501 DODSON AVENUE



ASSESSMENT CRITERIA

Educational Adequacy	50
Site	46
Exterior	45
Interior	56
MEP Systems	50

Overall Score: 51.4

CAMPUS DATA

- 1908 Original Building
- Grades 7-12
- **45,000 SF**
- **65 Students**

TOP CAMPUS ISSUES

- Safety and Security
- ADA
- No elevator
- Wood structure
- 110 year old building

CORGAN



CRUX
TECHNOLOGY • SECURITY SOLUTIONS
TECHNOLOGY • SECURITY SOLUTIONS

CHILDERS
ARCHITECT



JUNIOR HIGH SCHOOLS

02

CHAFFIN JUNIOR HIGH

3025 MASSARD ROAD



ASSESSMENT CRITERIA

Educational Adequacy	75
Site	78
Exterior	80
Interior	63
MEP Systems	50

Overall Score: 69.2

CAMPUS DATA

- 1969 Original Building
- 1979,1990,2013 Additions
- 2011 Shelter
- **152,583 SF**
- **793 Students**

TOP CAMPUS ISSUES

- Safety and Security
- ADA issues
- 2nd Floor structure separation
- Site drainage at track
- Sewer problems
- Upstairs windows leak

CORGAN

CRUX
TECHNOLOGY • SECURITY SOLUTIONS
TECHNOLOGY • SECURITY SOLUTIONS

CHILDERS
ARCHITECT



DARBY JUNIOR HIGH

616 NORTH 14 STREET



ASSESSMENT CRITERIA

Educational Adequacy	50
Site	67
Exterior	69
Interior	57
MEP Systems	50

Overall Score: 58.6

CAMPUS DATA

- 1923 Original Building
- 1968,1970,2006,2014 Adds
- 2011 Shelter
- **154,080 SF**
- **665 Students**

TOP CAMPUS ISSUES

- Safety and Security
- ADA issues
- Open non-code compliant exterior walkways
- Bookcases used as walls
- HVAC and controls issues

CORGAN



CRUX
TECHNOLOGY • SECURITY SOLUTIONS
TECHNOLOGY • SECURITY SOLUTIONS

CHILDERS
ARCHITECT



KIMMONS JUNIOR HIGH

2201 N. 50TH STREET



ASSESSMENT CRITERIA

Educational Adequacy	85
Site	83
Exterior	85
Interior	80
MEP Systems	80

Overall Score: 82.6

CAMPUS DATA

- 1964 Original Building
- 1968, 2006 Additions
- 2011 Shelter
- **123,482 SF**
- **797 Students**

TOP CAMPUS ISSUES

- Safety and Security
- ADA issues
- Exterior Hallway Connections
- HVAC issues
- Hot and steam in dish area

CORGAN

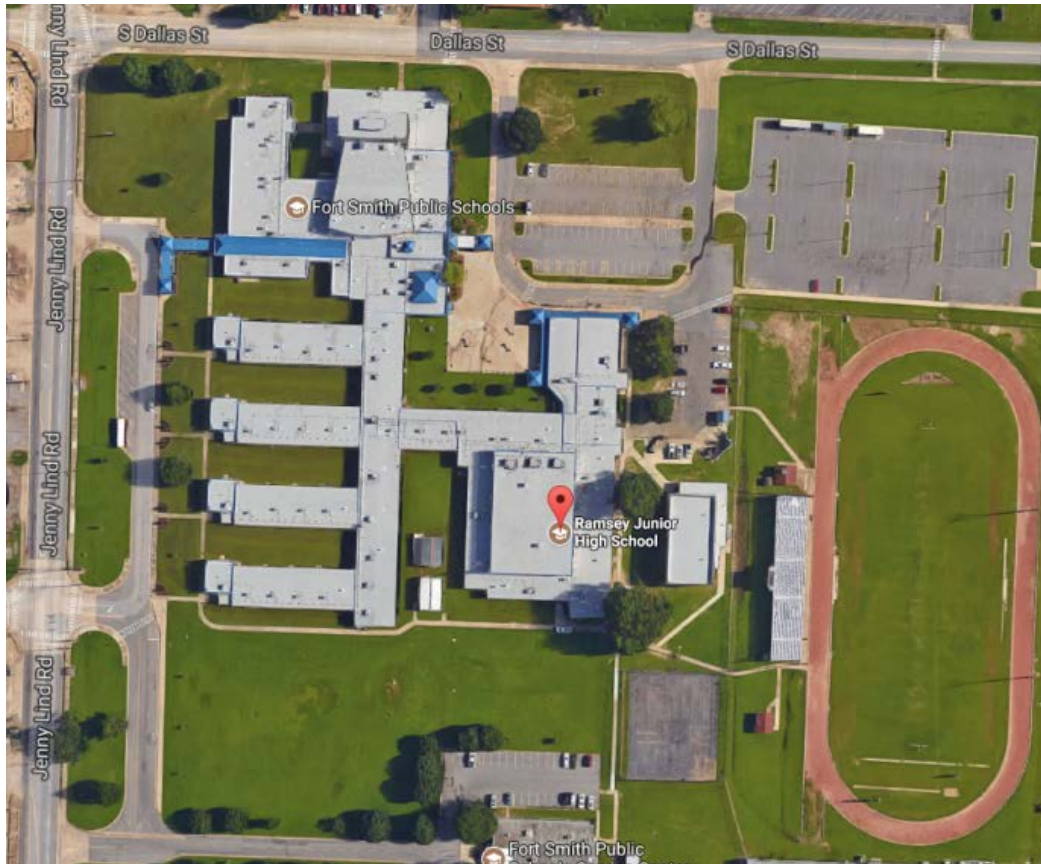
CRUX
TECHNOLOGY • SECURITY SOLUTIONS
TECHNOLOGY • SECURITY SOLUTIONS

CHILDERS
ARCHITECT



RAMSEY JUNIOR HIGH

3201 JENNY LIND ROAD



ASSESSMENT CRITERIA

Educational Adequacy	50
Site	73
Exterior	79
Interior	75
MEP Systems	50

Overall Score: 65.4

CAMPUS DATA

- 1954 Original Building
- 1968, 2006 Additions
- 2011 Shelter
- **123,482 SF**
- **886 Students**

TOP CAMPUS ISSUES

- Safety and Security
- ADA issues
- Poor building pedestrian circ. (single loaded, dead end classroom wings, narrow)
- Not enough gyms

CORGAN



CRUX
TECHNOLOGY • SECURITY SOLUTIONS
TECHNOLOGY • SECURITY SOLUTIONS

CHILDERS
ARCHITECT



EXAMPLE ELEMENTARY SCHOOLS

03

BONNEVILLE ELEMENTARY

2500 SOUTH WALDRON ROAD



ASSESSMENT CRITERIA

Educational Adequacy	50
Site	60
Exterior	67
Interior	61
MEP Systems	75

Overall Score: 62.6

CAMPUS DATA

- 1962 Original Building
- 1978 Additions
- 2006 Shelter
- **33,224 SF**
- **334 Students**

TOP CAMPUS ISSUES

- Safety and Security
- Drainage in playground
- Need more parking and space
- (3 portables)
- Non-functional front awning
- ADA compliance

CORGAN



CRUX
TECHNOLOGY • SECURITY SOLUTIONS
TECHNOLOGY • SECURITY SOLUTIONS

CHILDERS
ARCHITECT



CARNALL ELEMENTARY

2524 SOUTH TULSA



ASSESSMENT CRITERIA

Educational Adequacy	85
Site	95
Exterior	97
Interior	81
MEP Systems	85

Overall Score: 88.6

CAMPUS DATA

- 1962 Original Building
- 2011 Additions
- 2007 Shelter
- **47,667 SF**
- **256 Students**

TOP CAMPUS ISSUES

- Safety and Security
- ADA compliance in RRs
- Old Carpet
- Marker Boards

CORGAN



CRUX
TECHNOLOGY • SECURITY SOLUTIONS
TECHNOLOGY • SECURITY SOLUTIONS

CHILDERS
ARCHITECT



MORRISON ELEMENTARY

3415 NEWLON ROAD



ASSESSMENT CRITERIA

Educational Adequacy	65
Site	94
Exterior	86
Interior	84
MEP Systems	75

Overall Score: 80.8

CAMPUS DATA

- 1975 Original Building
- 2015 Additions
- 2007 Shelter
- **48,251 SF**
- **329 Students**

TOP CAMPUS ISSUES

- Safety and Security
- ADA compliance
- Precast roof "T" has lifted up in tornado, creating roof issue
- Bookcases for walls
- Sweating floors

CORGAN

CHILDERS
ARCHITECT

CRUX
TECHNOLOGY • SECURITY SOLUTIONS
TECHNOLOGY • SECURITY SOLUTIONS



TRUSTY ELEMENTARY

3300 HARRIS AVENUE



ASSESSMENT CRITERIA

Educational Adequacy	50
Site	65
Exterior	55
Interior	58
MEP Systems	55

Overall Score: 56.6

CAMPUS DATA

- 1928 Original Building
- 1948 Additions
- 2005 Shelter
- **34,217 SF**
- **354 Students**

TOP CAMPUS ISSUES

- Safety and Security
- ADA compliance
- Original wooden structure
- Old wiring
- Very old building



FACILITY ASSESSMENTS

TECHNOLOGY FINDINGS

- Despite limited funding, the technology department has done an “outstanding” job in preparing the district fiber optic WAN backbone.
- The network electronics are relatively new and in functioning order.
- Intercom and phone systems are outdated, would be difficult to phase in upgrades, and have reached the end of their useful life. Replacement is recommended.
- Classroom A/V in good shape.
- At the campus level, there are some issues with connectivity and also IDF/CDN rooms. Needs improvement.
- Many campuses lack adequate camera, access control, and adequate electrical infrastructure.



FACILITY ASSESSMENTS

OVERALL FINDINGS

- Average original facility age is **63 years** (not including additions or renovations)
- Average condition is “Fair”
- Facilities are well-maintained with strong structure / “bones” in most all buildings
- Older facilities show expected life-cycle issues
- Most schools have adequate technology infrastructure in classrooms



NEXT STEPS

USING THE ASSESSMENT INFORMATION AND PLANNING FOR THE FUTURE

- The district wide assessment is a “snap shot in time” a comprehensive look at the district
- The report provides a “road map” and a planning tool for future needs, planning and upgrades
- This report with a master planning schedule provides the district maintenance plan for the future
- Immediate Action Items to consider:
 - Complete LED lighting replacement program – Accelerate program in place to be completed in next few years and add exterior site and parking lot lighting enhancements
 - Complete Entire District access control and secure entry program
 - Complete entire district boiler replacement program
 - Develop and Implement district facility use efficiency program
 - Conduct District Wide Energy Usage Study
- Conduct Community Group Meetings - Planning for the future



NOVEMBER 2017

DISTRICT-WIDE FACILITY ASSESSMENTS



SECTION ONE

ELEMENTARY SCHOOLS

01

BALLMAN ELEMENTARY

2601 SOUTH "Q" STREET



ASSESSMENT CRITERIA

Educational Adequacy	50
Site	67
Exterior	64
Interior	60
MEP Systems	25

Overall Score: 53.2

CAMPUS DATA

- 1951 Original Building
- 1963,1990, 2002 Additions
- 2005 Shelter
- **53,507 SF**
- **273 Students**

TOP CAMPUS ISSUES

- Safety and Security
- 2nd worst HVAC system in the district (needs replacement)
- Some lights breaker switched
- ADA - All RRs need to be remodeled

CORGAN



CHILDERS
ARCHITECT

CRUX
TECHNOLOGY • SECURITY SOLUTIONS
TECHNOLOGY • SECURITY SOLUTIONS



BARLING ELEMENTARY

1400 "D" STREET



ASSESSMENT CRITERIA

Educational Adequacy	50
Site	76
Exterior	85
Interior	73
MEP Systems	50

Overall Score: 66.8

CAMPUS DATA

- 1974 Original Building
- 1979, 2010 Additions
- 2003 Shelter
- **64,964 SF**
- **356 Students**

TOP CAMPUS ISSUES

- Safety and Security / ADA
- Some walls are bookcases
- Air circulation in CR
- Standing water in RRs
- Breaker switching
- No fire sprinklers

CORGAN

CHILDERS
ARCHITECT

CRUX
TECHNOLOGY • SECURITY SOLUTIONS
TECHNOLOGY • SECURITY SOLUTIONS



BEARD ELEMENTARY

1600 CAVANAUGH ROAD



ASSESSMENT CRITERIA

Educational Adequacy	50
Site	79
Exterior	45
Interior	63
MEP Systems	50

Overall Score: 52.4

CAMPUS DATA

- 1968 Original Building
- 1992 Additions
- 2005 Shelter
- **38,163 SF**
- **327 Students**

TOP CAMPUS ISSUES

- Safety and Security
- ADA issues
- Short on parking
- One staff RR (entire bldg.)
- Kitchen –needs hood and Freezer/Cooler and Dishwash

CORGAN



CRUX
TECHNOLOGY • SECURITY SOLUTIONS
TECHNOLOGY • SECURITY SOLUTIONS

CHILDERS
ARCHITECT



BONNEVILLE ELEMENTARY

2500 SOUTH WALDRON ROAD



ASSESSMENT CRITERIA

Educational Adequacy	50
Site	60
Exterior	67
Interior	61
MEP Systems	75

Overall Score: 62.6

CAMPUS DATA

- 1962 Original Building
- 1978 Additions
- 2006 Shelter
- **33,224 SF**
- **334 Students**

TOP CAMPUS ISSUES

- Safety and Security
- Drainage in playground
- Need more parking and space
- (3 portables)
- Non-functional front awning
- ADA compliance

CORGAN



CRUX
TECHNOLOGY • SECURITY SOLUTIONS
TECHNOLOGY • SECURITY SOLUTIONS

CHILDERS
ARCHITECT



CARNALL ELEMENTARY

2524 SOUTH TULSA



ASSESSMENT CRITERIA

Educational Adequacy	85
Site	95
Exterior	97
Interior	81
MEP Systems	85

Overall Score: 88.6

CAMPUS DATA

- 1962 Original Building
- 2011 Additions
- 2007 Shelter
- **47,667 SF**
- **256 Students**

TOP CAMPUS ISSUES

- Safety and Security
- ADA compliance in RRs
- Old Carpet
- Marker Boards

CORGAN



CRUX
TECHNOLOGY • SECURITY SOLUTIONS
TECHNOLOGY • SECURITY SOLUTIONS

CHILDERS
ARCHITECT



CAVANAUGH ELEMENTARY

1025 SCHOOL STREET



ASSESSMENT CRITERIA

Educational Adequacy	75
Site	95
Exterior	97
Interior	81
MEP Systems	65

Overall Score: 76.8

CAMPUS DATA

- 1963 Original Building
- 2010 Additions
- 2007 Shelter
- **42,422 SF**
- **298 Students**

TOP CAMPUS ISSUES

- Safety and Security
- ADA compliance
- 5 CR on boiler
- Electrical issues in Café/Kit
- Freezer/cooler
- Need Art room

CORGAN



CRUX
TECHNOLOGY • SECURITY SOLUTIONS
TECHNOLOGY • SECURITY SOLUTIONS

CHILDERS
ARCHITECT



COOK ELEMENTARY

3517 BROOKEN HILL



ASSESSMENT CRITERIA

Educational Adequacy	85
Site	67
Exterior	56
Interior	55
MEP Systems	65

Overall Score: 65.6

CAMPUS DATA

- 1976 Original Building
- 1979,1994 Additions
- 2003 Shelter
- **71,118 SF**
- **548 Students**

TOP CAMPUS ISSUES

- Safety and Security
- ADA compliance
- Temp control in Classrooms
- Roof leaks at Expansion Joints

CORGAN

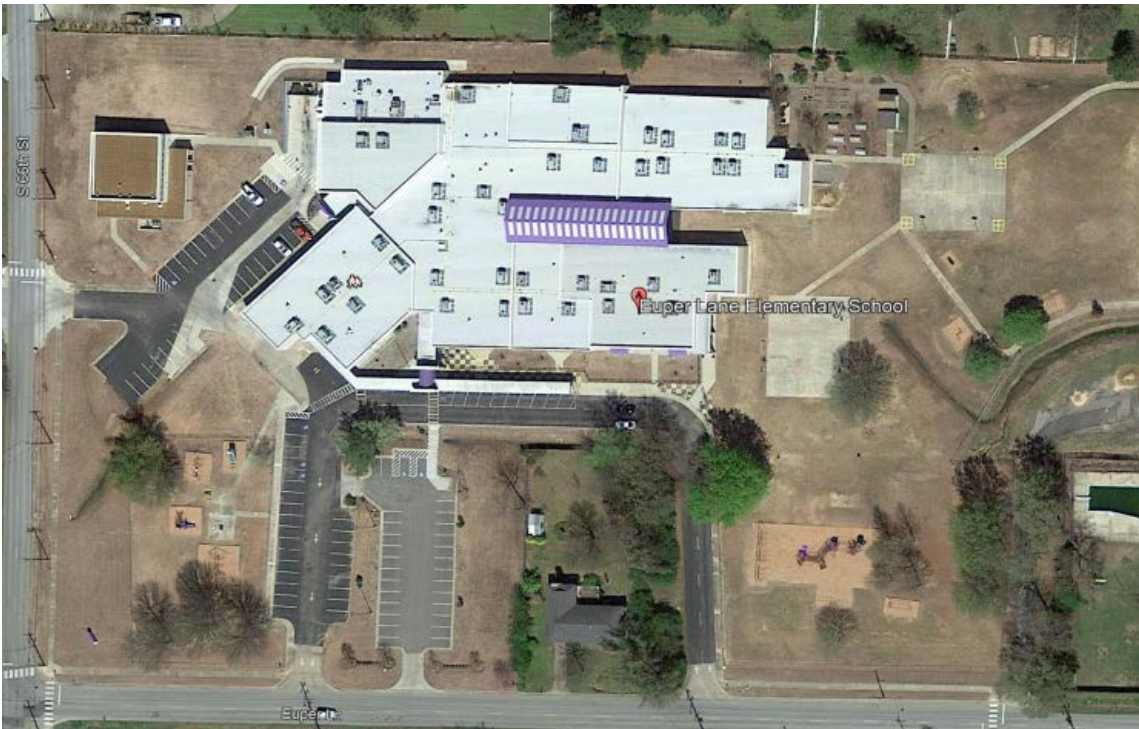
CRUX
TECHNOLOGY • SECURITY SOLUTIONS
TECHNOLOGY • SECURITY SOLUTIONS

CHILDERS
ARCHITECT



EUPER LANE ELEMENTARY

6601 EUPER LANE



ASSESSMENT CRITERIA

Educational Adequacy	85
Site	85
Exterior	83
Interior	78
MEP Systems	60

Overall Score: 78.2

CAMPUS DATA

- 1986 Original Building
- 2012 Additions
- 2005 Shelter
- **61,322 SF**
- **479 Students**

TOP CAMPUS ISSUES

- Safety and Security
- ADA compliance
- Major humidity issues
- Drainage – where grade is higher than floor
- At max enrollment

CORGAN

CHILDERS
ARCHITECT

CRUX
TECHNOLOGY • SECURITY SOLUTIONS
TECHNOLOGY • SECURITY SOLUTIONS



FAIRVIEW ELEMENTARY

2400 SOUTH DALLAS



ASSESSMENT CRITERIA

Educational Adequacy	85
Site	90
Exterior	87
Interior	84
MEP Systems	60

Overall Score: 81.2

CAMPUS DATA

- 1956 Original Building
- 1966,1992,2010 Additions
- 2006 Shelter
- **61,489 SF**
- **548 Students**

TOP CAMPUS ISSUES

- Safety and Security
- ADA compliance
- Individual HVAC room controls requested
- City storm drain backs up and floods.



HOWARD ELEMENTARY

1301 NORTH 8 STREET



ASSESSMENT CRITERIA

Educational Adequacy	85
Site	85
Exterior	93
Interior	83
MEP Systems	85

Overall Score: 86.2

CAMPUS DATA

- 1949 Original Building
- 1956, 1962, 2010 Additions
- 2009 Shelter
- **45,269 SF**
- **336 Students**

TOP CAMPUS ISSUES

- Safety and Security
- ADA compliance
- Power in kit/cafe
- Older building

CORGAN

CRUX
TECHNOLOGY • SECURITY SOLUTIONS
TECHNOLOGY • SECURITY SOLUTIONS

CHILDERS
ARCHITECT



MORRISON ELEMENTARY

3415 NEWLON ROAD



ASSESSMENT CRITERIA

Educational Adequacy	65
Site	94
Exterior	86
Interior	84
MEP Systems	75

Overall Score: 80.8

CAMPUS DATA

- 1975 Original Building
- 2015 Additions
- 2007 Shelter
- **48,251 SF**
- **329 Students**

TOP CAMPUS ISSUES

- Safety and Security
- ADA compliance
- Precast roof "T" has lifted up in tornado, creating roof issue
- Bookcases for walls
- Sweating floors

CORGAN



CRUX
TECHNOLOGY • SECURITY SOLUTIONS
TECHNOLOGY • SECURITY SOLUTIONS

CHILDERS
ARCHITECT



ORR ELEMENTARY

3609 PHOENIX AVE

ASSESSMENT CRITERIA



Educational Adequacy	85
Site	64
Exterior	89
Interior	66
MEP Systems	85

Overall Score: 77.8

CAMPUS DATA

- 1963 Original Building
- 1996 Additions
- 2004 Shelter
- **47,149 SF**
- **377 Students**

TOP CAMPUS ISSUES

- Safety and Security
- ADA compliance
- Playground drainage

CORGAN



CRUX
TECHNOLOGY • SECURITY SOLUTIONS
TECHNOLOGY • SECURITY SOLUTIONS

CHILDERS
ARCHITECT



ALBERT PIKE ELEMENTARY

4111 PARK AVE



ASSESSMENT CRITERIA

Educational Adequacy	75
Site	75
Exterior	77
Interior	70
MEP Systems	80

Overall Score: 75.4

CAMPUS DATA

- 1951 Original Building
- 1990,2009 Additions
- 2005 Shelter
- **63,349 SF**
- **485 Students**

TOP CAMPUS ISSUES

- Safety and Security
- ADA compliance
- Inadequate drop off
- Over capacity
- Older school



SPRADLING ELEMENTARY

4949 SPRADLING AVE



ASSESSMENT CRITERIA

Educational Adequacy	80
Site	72
Exterior	86
Interior	86
MEP Systems	85

Overall Score: 81.8

CAMPUS DATA

- 1969 Original Building
- 2002 Additions
- 2005 Shelter
- **40,943 SF**
- **412 Students**

TOP CAMPUS ISSUES

- Safety and Security
- ADA compliance
- Site drainage – sandbags at building
- Roof
- Portable

CORGAN



CRUX
TECHNOLOGY • SECURITY SOLUTIONS
TECHNOLOGY • SECURITY SOLUTIONS

CHILDERS
ARCHITECT



SUNNYMEDE ELEMENTARY

4201 NORTH O STREET



ASSESSMENT CRITERIA

Educational Adequacy	80
Site	65
Exterior	85
Interior	78
MEP Systems	80

Overall Score: 77.6

CAMPUS DATA

- 1951 Original Building
- 1953,1963,2000, 2012 Adds
- 2004 Shelter
- **40,943 SF**
- **641 Students**

TOP CAMPUS ISSUES

- Safety and Security
- ADA compliance
- Sewer pipe replacement
- Grading and drainage
- Sidewalk issues

CORGAN

CHILDERS
ARCHITECT

CRUX
TECHNOLOGY • SECURITY SOLUTIONS
TECHNOLOGY • SECURITY SOLUTIONS



SUTTON ELEMENTARY

5501 KELLEY HIGHWAY



ASSESSMENT CRITERIA

Educational Adequacy	85
Site	84
Exterior	86
Interior	85
MEP Systems	80

Overall Score: 84

CAMPUS DATA

- 1958 Original Building
- 1992, 2012 Additions
- 2005 Shelter
- **67,649 SF**
- **495 Students**

TOP CAMPUS ISSUES

- Safety and Security
- ADA compliance
- Hydronic heat

CORGAN



CRUX
TECHNOLOGY • SECURITY SOLUTIONS
TECHNOLOGY • SECURITY SOLUTIONS

CHILDERS
ARCHITECT



TILLES ELEMENTARY

815 NORTH 16TH STREET



ASSESSMENT CRITERIA

Educational Adequacy	80
Site	72
Exterior	86
Interior	72
MEP Systems	80

Overall Score: 78

CAMPUS DATA

- 1982 Original Building
- 1991 Additions
- 2004 Shelter
- **60,578 SF**
- **382 Students**

TOP CAMPUS ISSUES

- Safety and Security
- ADA compliance
- HVAC in media center
- Electrical system
- Colors

CORGAN



CRUX
TECHNOLOGY • SECURITY SOLUTIONS
TECHNOLOGY • SECURITY SOLUTIONS

CHILDERS
ARCHITECT



TRUSTY ELEMENTARY

3300 HARRIS AVENUE



ASSESSMENT CRITERIA

Educational Adequacy	50
Site	65
Exterior	55
Interior	58
MEP Systems	55

Overall Score: 56.6

CAMPUS DATA

- 1928 Original Building
- 1948 Additions
- 2005 Shelter
- **34,217 SF**
- **354 Students**

TOP CAMPUS ISSUES

- Safety and Security
- ADA compliance
- Original wooden structure
- Old wiring
- Very old building

CORGAN

CRUX
TECHNOLOGY • SECURITY SOLUTIONS
TECHNOLOGY • SECURITY SOLUTIONS

CHILDERS
ARCHITECT



WOODS ELEMENTARY

3201 MASSARD ROAD



ASSESSMENT CRITERIA

Educational Adequacy	85
Site	72
Exterior	82
Interior	75
MEP Systems	70

Overall Score: 76.8

CAMPUS DATA

- 1975 Original Building
- 1979,1990 Additions
- 2004 Shelter
- **76,728SF**
- **553 Students**

TOP CAMPUS ISSUES

- Safety and Security
- ADA compliance
- HVAC and Humidity issues (ductboard)
- Freezer/Cooler
- Admin HVAC zoning

CORGAN

CRUX
TECHNOLOGY • SECURITY SOLUTIONS
TECHNOLOGY • SECURITY SOLUTIONS

CHILDERS
ARCHITECT



SECTION TWO

JUNIOR HIGH SCHOOLS

02

CHAFFIN JUNIOR HIGH

3025 MASSARD ROAD



ASSESSMENT CRITERIA

Educational Adequacy	75
Site	78
Exterior	80
Interior	63
MEP Systems	50

Overall Score: 69.2

CAMPUS DATA

- 1969 Original Building
- 1979,1990,2013 Additions
- 2011 Shelter
- **152,583 SF**
- **793 Students**

TOP CAMPUS ISSUES

- Safety and Security
- ADA issues
- 2nd Floor structure separation
- Site drainage at track
- Sewer problems
- Upstairs windows leak

CORGAN

CRUX
TECHNOLOGY • SECURITY SOLUTIONS
TECHNOLOGY • SECURITY SOLUTIONS

CHILDERS
ARCHITECT



DARBY JUNIOR HIGH

616 NORTH 14 STREET



ASSESSMENT CRITERIA

Educational Adequacy	50
Site	67
Exterior	69
Interior	57
MEP Systems	50

Overall Score: 58.6

CAMPUS DATA

- 1923 Original Building
- 1968,1970,2006,2014 Adds
- 2011 Shelter
- **154,080 SF**
- **665 Students**

TOP CAMPUS ISSUES

- Safety and Security
- ADA issues
- Open non-code compliant exterior walkways
- Bookcases used as walls
- HVAC and controls issues

CORGAN



CRUX
TECHNOLOGY • SECURITY SOLUTIONS
TECHNOLOGY • SECURITY SOLUTIONS

CHILDERS
ARCHITECT



KIMMONS JUNIOR HIGH

2201 N. 50TH STREET



ASSESSMENT CRITERIA

Educational Adequacy	85
Site	83
Exterior	85
Interior	80
MEP Systems	80

Overall Score: 82.6

CAMPUS DATA

- 1964 Original Building
- 1968, 2006 Additions
- 2011 Shelter
- **123,482 SF**
- **797 Students**

TOP CAMPUS ISSUES

- Safety and Security
- ADA issues
- Exterior Hallway Connections
- HVAC issues
- Hot and steam in dish area

CORGAN

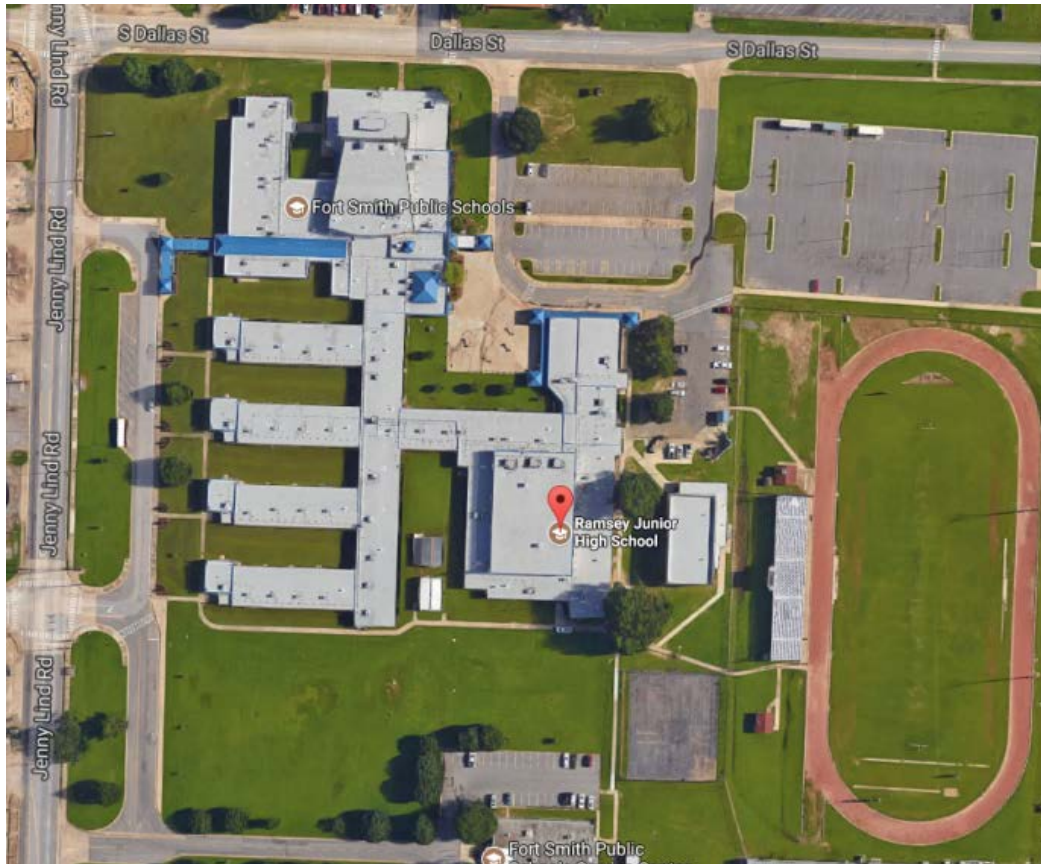
CRUX
TECHNOLOGY • SECURITY SOLUTIONS
TECHNOLOGY • SECURITY SOLUTIONS

CHILDERS
ARCHITECT



RAMSEY JUNIOR HIGH

3201 JENNY LIND ROAD



ASSESSMENT CRITERIA

Educational Adequacy	50
Site	73
Exterior	79
Interior	75
MEP Systems	50

Overall Score: 65.4

CAMPUS DATA

- 1954 Original Building
- 1968, 2006 Additions
- 2011 Shelter
- **123,482 SF**
- **886 Students**

TOP CAMPUS ISSUES

- Safety and Security
- ADA issues
- Poor building pedestrian circ. (single loaded, dead end classroom wings, narrow)
- Not enough gyms

CORGAN

CRUX
TECHNOLOGY • SECURITY SOLUTIONS
TECHNOLOGY • SECURITY SOLUTIONS

CHILDERS
ARCHITECT

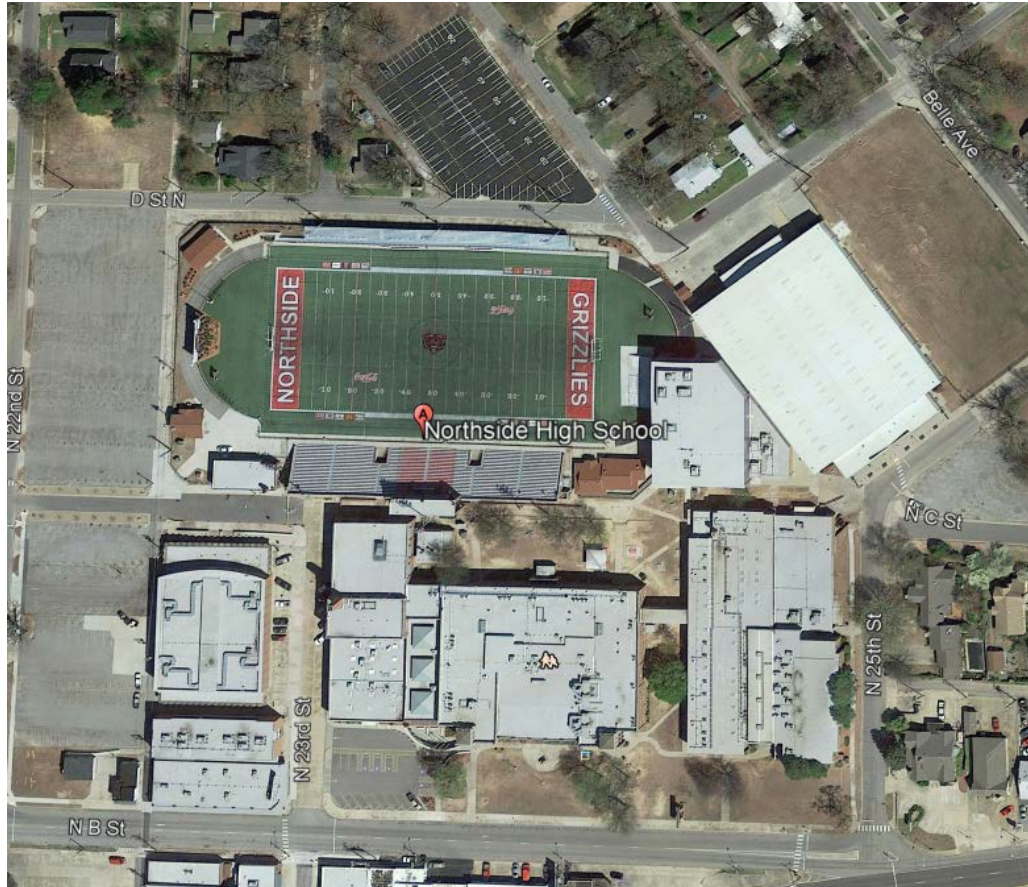


SECTION THREE
HIGH SCHOOLS

03

NORTHSIDE HIGH SCHOOL

2301 NORTH B STREET



ASSESSMENT CRITERIA

Educational Adequacy	56
Site	64
Exterior	66
Interior	66
MEP Systems	70

Overall Score: 64

(Scores are averaged for all campus buildings)

CAMPUS DATA

- 1927 Original Building
- 15 Additions
- No Storm Shelter
- **235,229 SF**
- **1715 Students**

TOP CAMPUS ISSUES

- Safety and Security
- ADA issues
- Lots of mixed HVAC systems, older wiring systems, etc.
- Landlocked, tight site

CORGAN



CRUX
TECHNOLOGY • SECURITY SOLUTIONS
TECHNOLOGY • SECURITY SOLUTIONS

CHILDERS
ARCHITECT



SOUTHSIDE HIGH SCHOOL

4100 GARY STREET



ASSESSMENT CRITERIA

Educational Adequacy	50
Site	76
Exterior	67
Interior	56
MEP Systems	50

Overall Score: 59.8

CAMPUS DATA

- 1963 Original Building
- 14 Additions
- No Storm Shelter
- **234,017 SF**
- **1536 Students**

TOP CAMPUS ISSUES

- Safety and Security
- ADA issues
- Lots of mixed HVAC systems
- Site drainage

CORGAN



CRUX
TECHNOLOGY • SECURITY SOLUTIONS
TECHNOLOGY • SECURITY SOLUTIONS

CHILDERS
ARCHITECT



BELLE POINT NEW TECH

1501 DODSON AVENUE



ASSESSMENT CRITERIA

Educational Adequacy	50
Site	46
Exterior	45
Interior	56
MEP Systems	50

Overall Score: 51.4

CAMPUS DATA

- 1908 Original Building
- Grades 7-12
- **45,000 SF**
- **65 Students**

TOP CAMPUS ISSUES

- Safety and Security
- ADA
- No elevator
- Wood structure
- 110 year old building

CORGAN

CRUX
TECHNOLOGY • SECURITY SOLUTIONS
TECHNOLOGY • SECURITY SOLUTIONS

CHILDERS
ARCHITECT



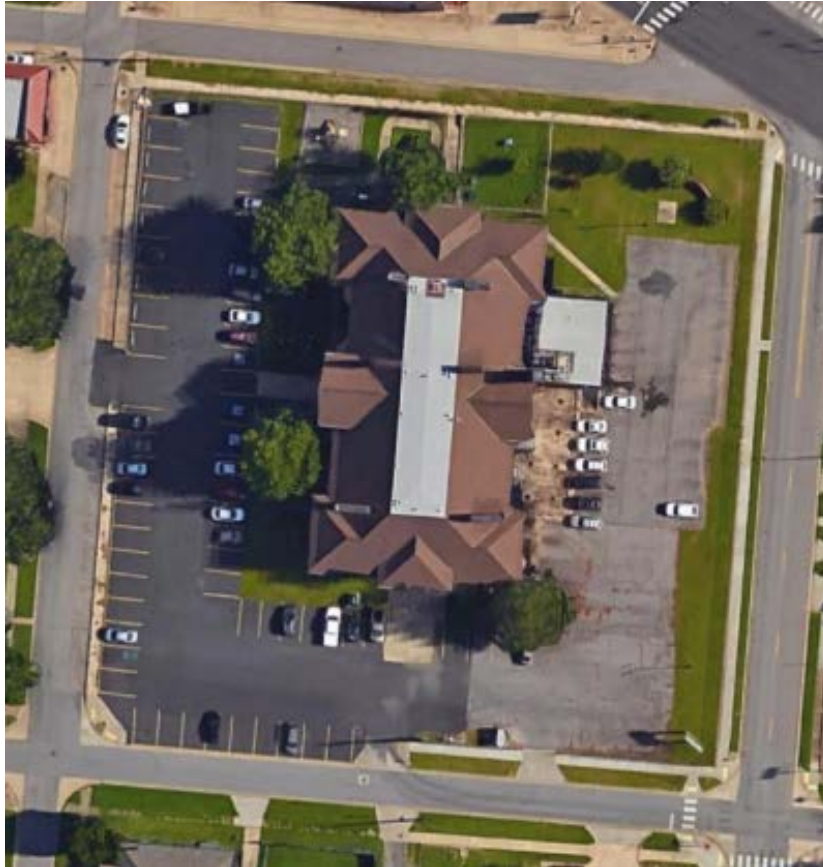
SECTION FOUR

DISTRICT FACILITIES

04

PEABODY ADULT EDUCATION LEARNING CENTER

501 SOUTH 21ST STREET



ASSESSMENT CRITERIA

Educational Adequacy	50
Site	52
Exterior	51
Interior	54
MEP Systems	75

Overall Score: 56.4

CAMPUS DATA

- 1919 Original Building
- **48,376 SF**

TOP CAMPUS ISSUES

- Safety and Security
- ADA issues
- Code issues
- Wood structure floors and roof

CORGAN



CRUX
TECHNOLOGY • SECURITY SOLUTIONS
TECHNOLOGY • SECURITY SOLUTIONS

CHILDERS
ARCHITECT



PARKER CENTER

501 SOUTH 21ST STREET



ASSESSMENT CRITERIA

Educational Adequacy	N/A
Site	76
Exterior	58
Interior	72
MEP Systems	90

Overall Score: 74

CAMPUS DATA

- 1919 Original Building
- **48,376SF**

TOP CAMPUS ISSUES

- Safety and Security
- ADA issues
- Code issues
- Wood structure floors and roof

CORGAN

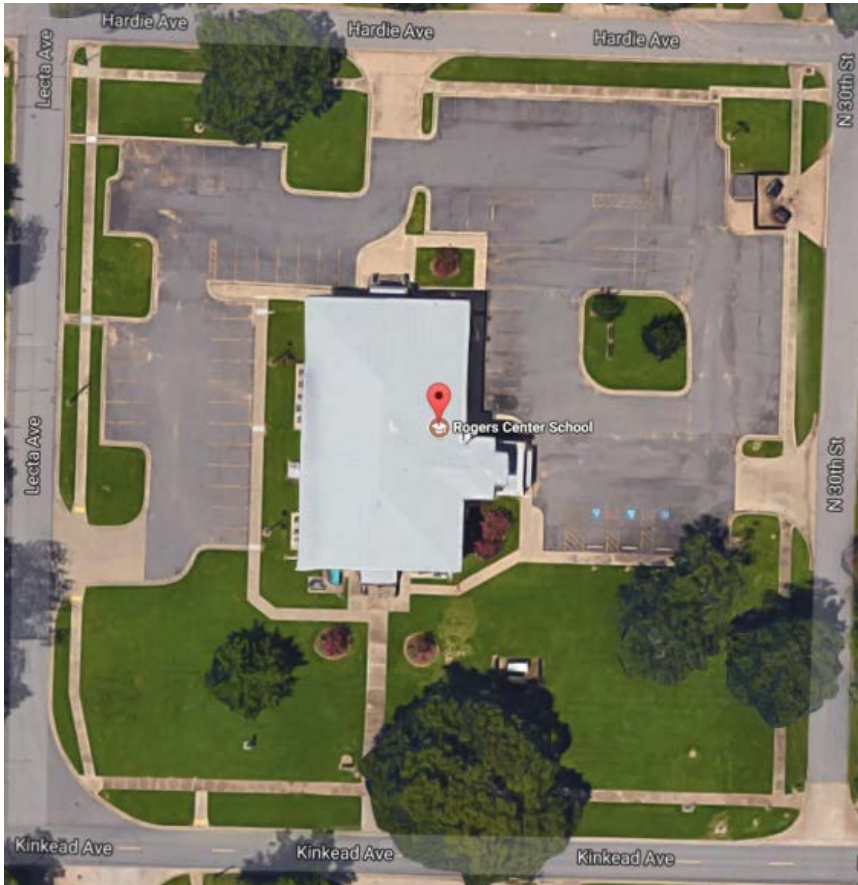
CHILDERS
ARCHITECT

CRUX
TECHNOLOGY • SECURITY SOLUTIONS
TECHNOLOGY • SECURITY SOLUTIONS



ROGERS CENTER

2901 KINKEAD AVENUE



ASSESSMENT CRITERIA

Educational Adequacy	N/A
Site	61
Exterior	51
Interior	69
MEP Systems	75

Overall Score: 64

CAMPUS DATA

- 1919 Original Building
- **48,376 SF**

TOP CAMPUS ISSUES

- Safety and Security
- ADA issues
- Code issues
- Hydronic heat/boiler

CORGAN

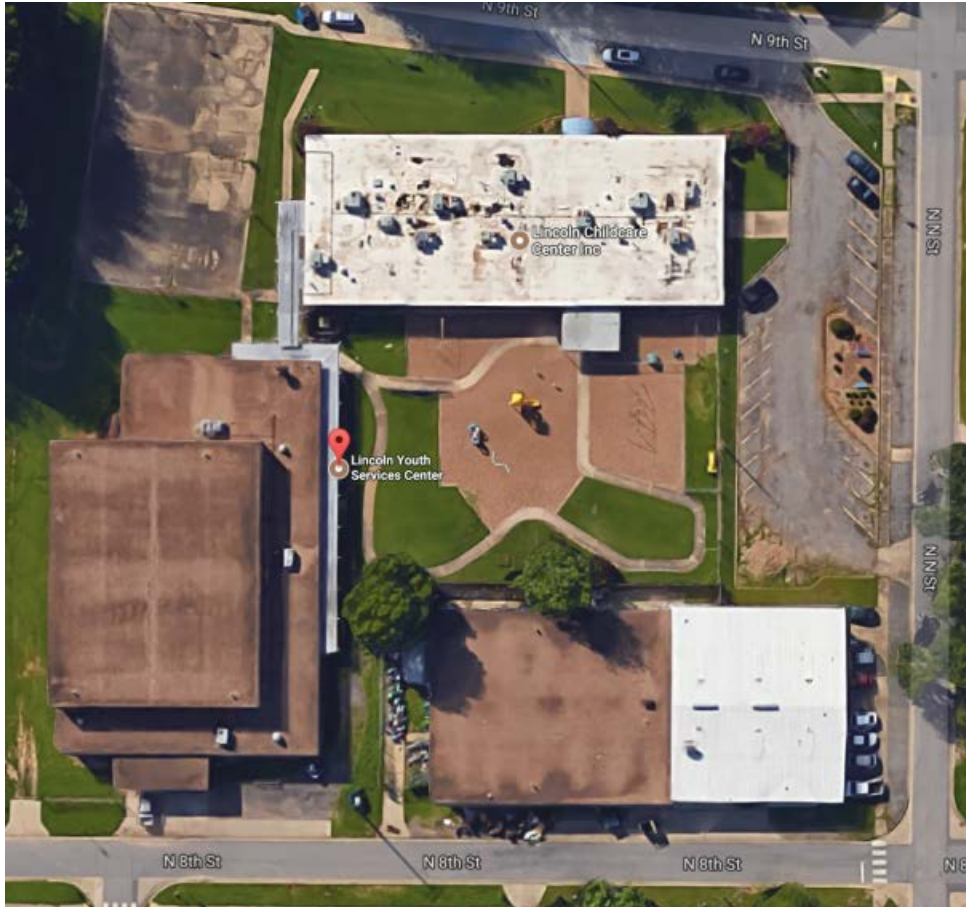
CHILDERS
ARCHITECT

CRUX
TECHNOLOGY • SECURITY SOLUTIONS
TECHNOLOGY • SECURITY SOLUTIONS



LINCOLN ACTIVITY CENTER

1422 NORTH 8TH STREET



ASSESSMENT CRITERIA

Educational Adequacy	N/A
Site	67
Exterior	75
Interior	67
MEP Systems	65

Overall Score: 68.5

CAMPUS DATA

- Original Building
- **28,210 SF**

TOP CAMPUS ISSUES

- Safety and Security
- ADA issues

CORGAN

CRUX
TECHNOLOGY • SECURITY SOLUTIONS
TECHNOLOGY • SECURITY SOLUTIONS

CHILDERS
ARCHITECT



SERVICE CENTER COMPLEX

3205 JENNY LIND ROAD

ASSESSMENT CRITERIA



Educational Adequacy	N/A
Site	43
Exterior	62
Interior	68
MEP Systems	80

Overall Score: 63.3

CAMPUS DATA

- 1964 Original Building
- Various additions
- **110,975 SF**

TOP CAMPUS ISSUES

- Safety and Security
- ADA issues
- Parking
- Site drainage (sandbags/doors)

CORGAN



CRUX
TECHNOLOGY • SECURITY SOLUTIONS
TECHNOLOGY • SECURITY SOLUTIONS

CHILDERS
ARCHITECT

