



*Wharton County  
Junior College*



# *Monthly Financial Reports*

*October 2016*



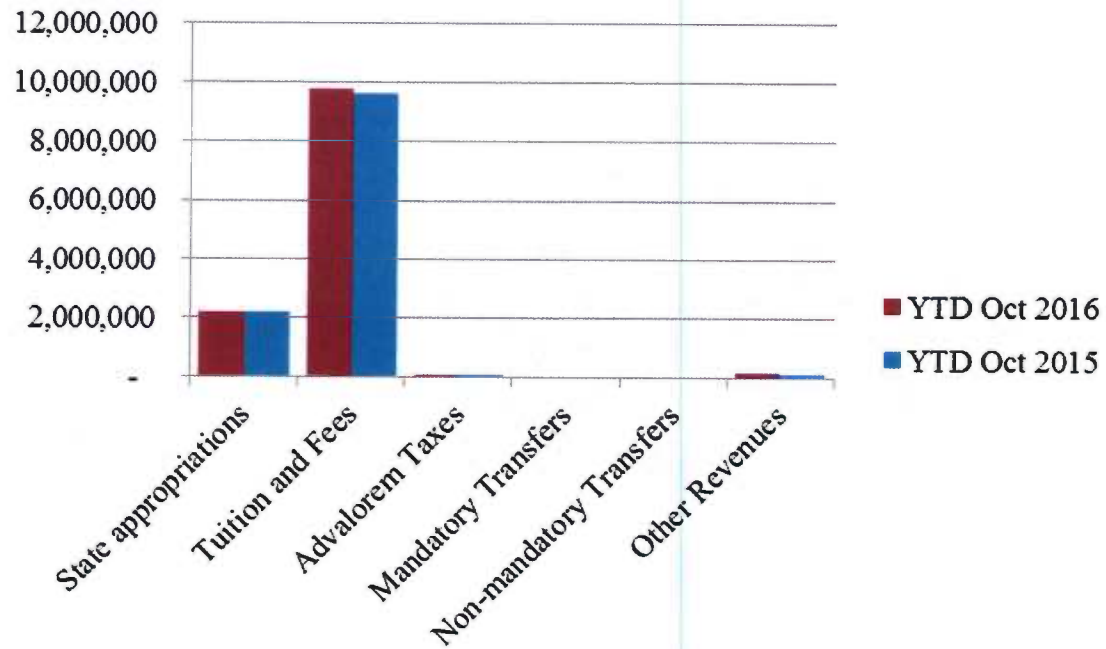
## Revenue & Expenditure Summary

	FISCAL 2017				FISCAL 2016			
	Current Month	Y-T-D ACTUAL	Budget	% of Budget	Y-T-D ACTUAL	Budget	% of Budget	% OF PRIOR YR ACTUAL
<b>Fund 1000 Revenues:</b>								
State appropriations	\$1,091,527	\$2,183,057	\$ 9,112,077	23.96%	\$2,186,901	\$ 9,112,077	24.00%	100%
Tuition and Fees	83,365	9,769,345	21,903,163	44.60%	9,605,108	21,244,443	45.21%	102%
Advalorem Taxes	25,179	43,487	5,800,669	0.75%	28,469	5,238,000	0.54%	153%
Mandatory Transfers	-	-	1,372,261	0.00%	-	302,500	0.00%	0%
Non-mandatory Transfers	-	-	104,729	0.00%	-	209,111	0.00%	0%
Other Revenues	46,340	138,526	448,761	30.87%	126,880	443,101	28.63%	109%
<b>Total Revenues</b>	<b>1,246,411</b>	<b>12,134,415</b>	<b>38,741,660</b>	<b>31.32%</b>	<b>11,947,358</b>	<b>36,549,232</b>	<b>32.69%</b>	<b>102%</b>
<b>Expenditures:</b>								
Salaries	1,800,309	3,504,996	22,315,219	15.71%	3,391,362	21,356,446	15.88%	103%
Employee Benefits	404,774	623,111	5,234,612	11.90%	625,675	4,940,274	12.66%	100%
Capital Expenditures	-	-	461,237	-	5,602	5,602	-	0%
Mandatory Transfers	179,429	179,429	361,800	49.59%	25,429	357,300	7.12%	0%
Non-mandatory Transfers	-	-	-	-	-	-	-	0%
Other Expenditures	637,540	1,634,186	10,368,792	15.76%	1,741,151	9,889,610	17.61%	94%
<b>Total expenditures</b>	<b>3,022,052</b>	<b>5,941,722</b>	<b>38,741,660</b>	<b>15.34%</b>	<b>5,789,219</b>	<b>36,549,232</b>	<b>15.84%</b>	<b>103%</b>
<b>Net increase/ (decrease) in net assets</b>	<b>\$ (1,775,641)</b>	<b>\$ 6,192,693</b>			<b>\$ 6,158,139</b>			
<b>Less Outstanding encumbrances</b>		<b>(1,831,568)</b>			<b>(1,289,078)</b>			
<b>Net increase less encumbrances</b>		<b>\$ 4,361,125</b>			<b>\$ 4,869,061</b>			

\* Note: Net student receivables in the amount of \$1,069,565.97 are currently outstanding. Tuition and fees are subject to collection in future periods.

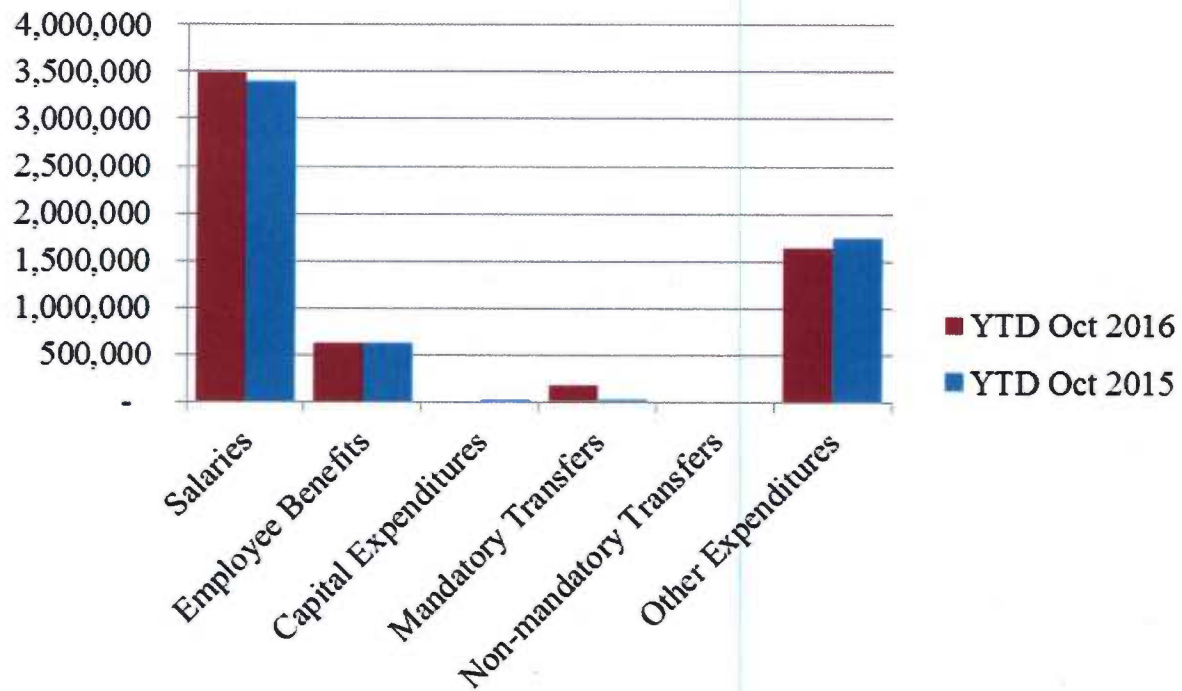


## Year to Date Revenues



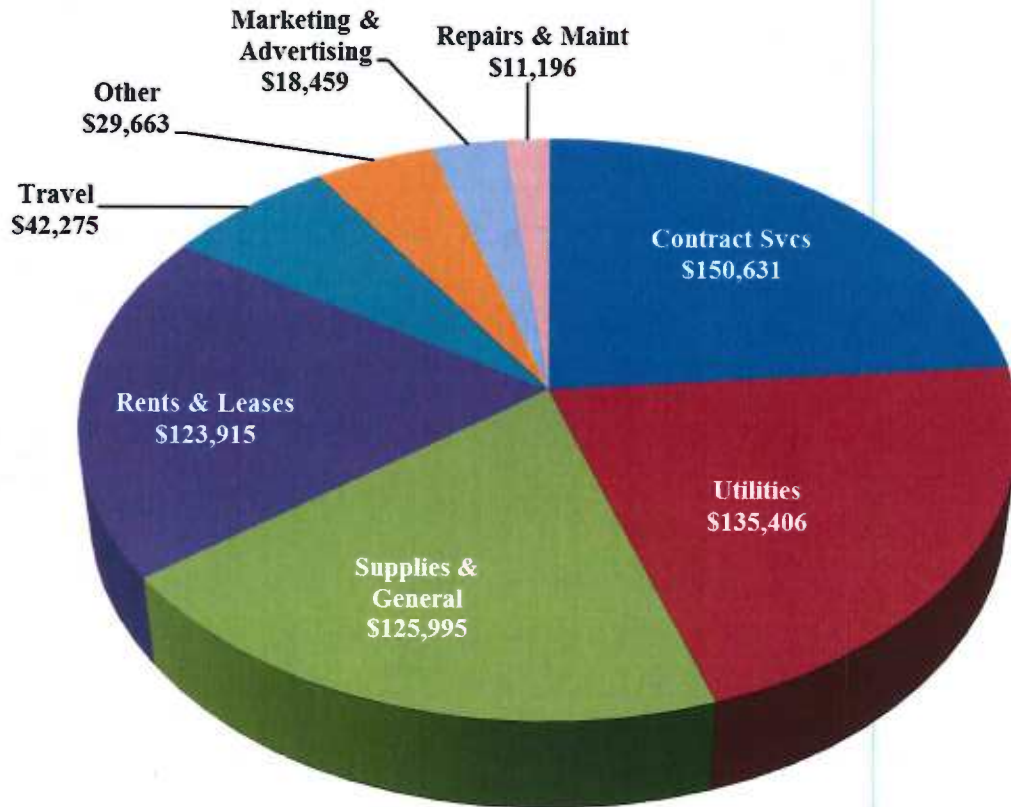


## Year to Date Expenses





## Other Expenses for October



- Contract Services includes Blackboard service FY17, \$116k



*Wharton County  
Junior College*

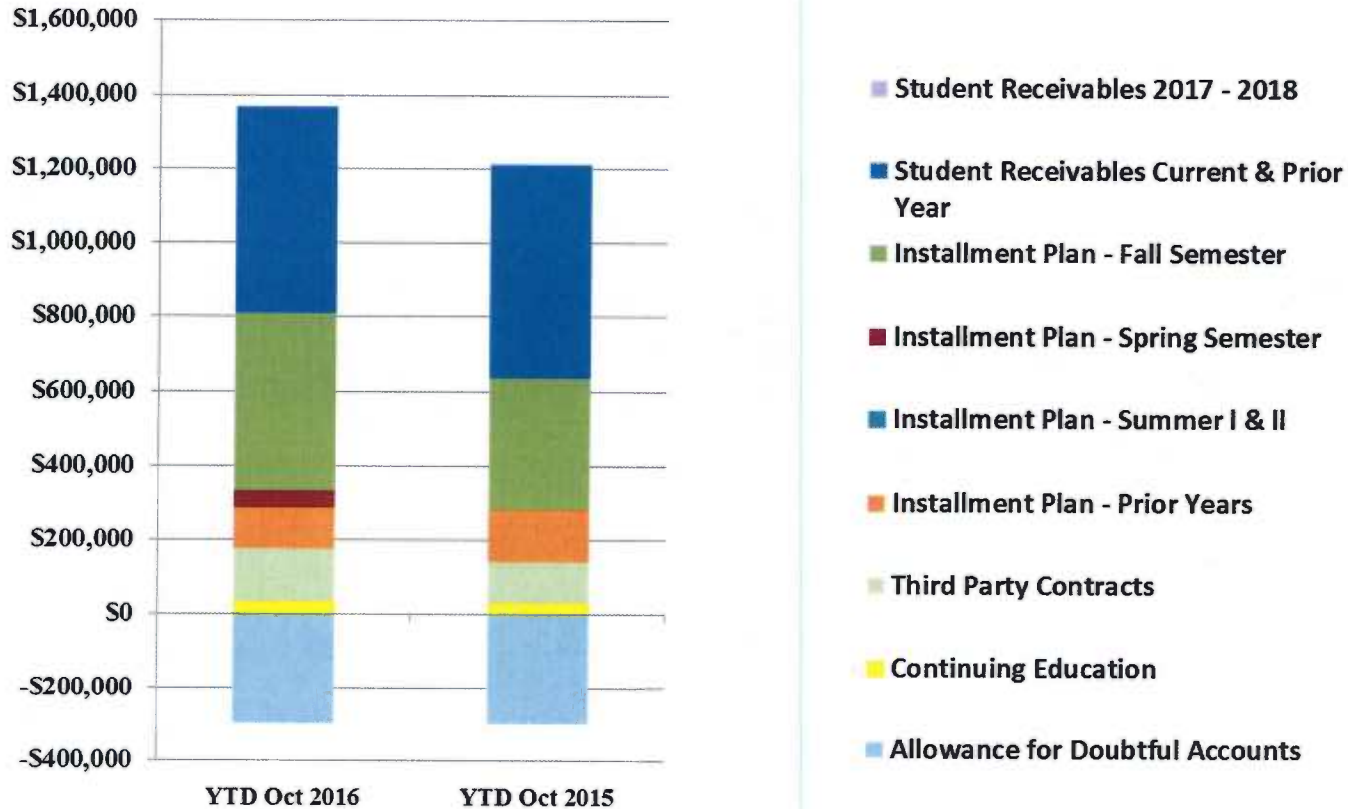


## ***Analysis of Student Receivable Outstanding As of October 31, 2016***

	2017	2016
Student Receivables Current & Prior Year	\$ 557,002.12	\$ 572,064.75
Installment Plan Receivable Due Fall Semester	\$ 477,053.88	\$ 355,358.69
Installment Plan Receivable Due Spring Semester	44,472.75	0.00
Installment Plan Receivable Summer I & II	0.00	0.00
Installment Plan Receivable Prior Years	111,576.90	139,839.29
Total Installment Plan Receivable	<u>\$ 633,103.53</u>	<u>\$ 495,197.98</u>
Third Party Contracts Receivable	\$ 144,622.93	\$ 112,367.28
Continuing Education Receivable	32,936.15	29,995.00
Allowance for Doubtful Accounts	(298,098.76)	(296,237.51)
	<u>\$ 1,069,565.97</u>	<u>\$ 913,387.50</u>



## AR by Category



# *COMBINED BALANCE SHEET*

*(Funds included: GOVERNMENTAL FUND TYPES)*



Wharton County Junior College  
 Combined Balance Sheet--All Fund Types and Account Groups  
 31-OCT-2016  
 (With comparative totals for 31-OCT-2015 )  
 (amounts expressed in dollars)

Governmental Fund Types

	Auxiliary Enterprise	Current Unrestricted	Restricted Funds	Current Year 2017	Prior Year 2016
<b>ASSETS and OTHER DEBITS:</b>					
<b>ASSETS:</b>					
Cash	434,089	3,915,375	243,871	4,593,335	3,508,254
Cash Investments	699,329	14,187,117	456,114	15,342,560	15,921,934
Accounts Receivable	49,861	1,078,926	5,681	1,134,468	994,143
Taxes Receivable		349,322	--	349,322	320,601
Local, St & Fed Agency Receivable		--	13,907	13,907	28,890
Due From Other Funds		48,119	100,923	149,042	69,380
Prepaid Expense	35,057	--	--	35,057	33,304
Property, Plant & Equipment		--	--		
Deferred Outflows		2,267,905	--	2,267,905	886,346
<b>TOTAL ASSETS AND OTHER DEBITS:</b>	<b>1,218,337</b>	<b>21,846,764</b>	<b>820,496</b>	<b>23,885,597</b>	<b>21,762,851</b>
<b>Liabilities, equity and other credits</b>					
<b>LIABILITIES:</b>					
Accounts Payable	11,275	127,538	1,821	140,634	13,039
Employee Benefits Payable		173,475	--	173,475	174,882
Payroll Taxes Payable		--	--	--	--
Accrued Liabilities		--	--	--	--
Deferred Revenue		1,589	446,064	447,653	497,445
Long Term Debt		--	--	--	--
Net Pension Liability		5,747,658	--	5,747,658	5,031,677
Deposits Payable	45,185	11,378	--	56,563	52,303
Due To Other Funds	48,119	--	--	48,119	45,594
Scholarships-Designated Donations		--	102,178	102,178	95,150
Scholarships-Non-designated		--	137,784	137,784	130,395
Donatio					
Deferred Inflows		2,169,564	--	2,169,564	1,538,983
<b>TOTAL LIABILITIES:</b>	<b>104,580</b>	<b>8,231,202</b>	<b>687,847</b>	<b>9,023,628</b>	<b>7,579,468</b>
<b>EQUITY AND OTHER CREDITS:</b>					
Control Accounts		--	--		
Fund Balances		--	--		
Prior Year Fund Balance		7,029,039	--	7,029,039	5,019,854
Endowment Fund-Original		--	--		
Endowment Fund-Income		--	--		
FB Professional Development		--	--		
FB Salary Equity		--	--		
FB Capital Equipment		--	--		

REPORT FGRCOBS  
COAS: W  
FISCAL YEAR: 17

Wharton County Junior College  
Combined Balance Sheet--All Fund Types and Account Groups  
31-OCT-2016  
(With comparative totals for 31-OCT-2015 )  
(amounts expressed in dollars)

RUN DATE: 11/08/2016  
TIME: 01:35:29 PM  
PAGE: 2

Governmental Fund Types

	Auxiliary Enterprise	Current Unrestricted	Restricted Funds	Current Year 2017	Prior Year 2016
EQUITY AND OTHER CREDITS:					
FB Investment Gain And Loss		--	--		
Fund Balance Receivables		-	--		
Reserved-Undesignated		--	--		
FBTC Operating Fund Balance		--	--		
Plant Fund Balance		--	--		
Bond Fund Balance		--	--		
Scholarship		--	--		
Fund Balance-Rounding Diff		--	-		
Fund Balances:					
Reserve for Encumbrance	33,425	1,831,568	53,966	1,918,958	1,497,517
Fund Balance	1,080,333	4,754,955	78,683	5,913,971	7,666,013
Reserve For Operations		--	--		
TOTAL EQUITY AND OTHER CREDITS:	1,113,757	13,615,562	132,649	14,861,968	14,183,384
TOTAL LIABILITIES, EQUITY AND OTHER CREDITS:	1,218,337	21,846,764	820,496	23,885,597	21,762,851

REPORT FGRCOBS  
COAS: W  
FISCAL YEAR: 17

Wharton County Junior College  
Combined Balance Sheet--All Fund Types and Account Groups  
31-OCT-2016  
(With comparative totals for 31-OCT-2015 )  
(amounts expressed in dollars)

RUN DATE: 11/08/2016  
TIME: 01:35:29 PM  
PAGE: 3

Proprietary Fund Types

Agency Funds	Current Year 2017	Prior Year 2016
<b>ASSETS and OTHER DEBITS:</b>		
<b>ASSETS:</b>		
Cash	175,306	160,423
Cash Investments	103,342	103,019
Accounts Receivable	-	-
Taxes Receivable	-	-
Local, St & Fed Agency Receivable		
Due From Other Funds		
Prepaid Expense		
Property, Plant & Equipment		
Deferred Outflows		
<b>TOTAL ASSETS AND OTHER DEBITS:</b>	<b>278,648</b>	<b>263,442</b>
<b>Liabilities, equity and other credits</b>		
<b>LIABILITIES:</b>		
Accounts Payable		1,398
Employee Benefits Payable		-
Payroll Taxes Payable		
Accrued Liabilities		
Deferred Revenue		
Long Term Debt		
Net Pension Liability		
Deposits Payable	278,497	261,953
Due To Other Funds		
Scholarships-Designated Donations		
Scholarships-Non-designated		
Donatio		
Deferred Inflows		
<b>TOTAL LIABILITIES:</b>	<b>278,497</b>	<b>263,350</b>
<b>EQUITY AND OTHER CREDITS:</b>		
Control Accounts	151	91
Fund Balances		
Prior Year Fund Balance		
Endowment Fund-Original		
Endowment Fund-Income		
FB Professional Development		
FB Salary Equity		
FB Capital Equipment		

REPORT FGRCOBS  
 COAS: W  
 FISCAL YEAR: 17

Wharton County Junior College  
 Combined Balance Sheet--All Fund Types and Account Groups  
 31-OCT-2016  
 (With comparative totals for 31-OCT-2015 )  
 (amounts expressed in dollars)

RUN DATE: 11/08/2016  
 TIME: 01:35:29 PM  
 PAGE: 4

Proprietary Fund Types

Agency Funds	Current Year 2017	Prior Year 2016
<hr/>		
EQUITY AND OTHER CREDITS:		
FB Investment Gain And Loss		
Fund Balance Receivables		
Reserved-Undesignated		
FBTC Operating Fund Balance		
Plant Fund Balance		
Bond Fund Balance		
Scholarship		
Fund Balance-Rounding Diff		
Fund Balances:		
Reserve for Encumbrance		
Fund Balance		
Reserve For Operations		
TOTAL EQUITY AND OTHER CREDITS:	151	91
<hr/>		
TOTAL LIABILITIES,	278,648	263,442
EQUITY AND OTHER CREDITS:	278,648	263,442
=====	=====	=====

REPORT FGRCOBS  
COAS: W  
FISCAL YEAR: 17

Wharton County Junior College  
Combined Balance Sheet--All Fund Types and Account Groups  
31-OCT-2016  
(With comparative totals for 31-OCT-2015 )  
(amounts expressed in dollars)

RUN DATE: 11/08/2016  
TIME: 01:35:29 PM  
PAGE: 5

Fiduciary Fund Types

	Quasi Endowment Fund	Endowment Funds	Current Year 2017	Prior Year 2016
<b>ASSETS and OTHER DEBITS:</b>				
<b>ASSETS:</b>				
Cash		1,168,061	1,168,061	694,929
Cash Investments		8,309,750	8,309,750	8,281,409
Accounts Receivable		-2,524	-2,524	610
Taxes Receivable		--		
Local, St & Fed Agency Receivable		--		
Due From Other Funds		--		
Prepaid Expense		--		
Property, Plant & Equipment		--		
Deferred Outflows		--		
<b>TOTAL ASSETS AND OTHER DEBITS:</b>		<b>9,475,287</b>	<b>9,475,287</b>	<b>8,976,949</b>
<b>Liabilities, equity and other credits</b>				
<b>LIABILITIES:</b>				
Accounts Payable		--		
Employee Benefits Payable		--		
Payroll Taxes Payable		--		
Accrued Liabilities		--		
Deferred Revenue		--		
Long Term Debt		--		
Net Pension Liability		--		
Deposits Payable		--		
Due To Other Funds		100,923	100,923	23,787
Scholarships-Designated Donations		--		
Scholarships-Non-designated		--		
Donatio		--		
Deferred Inflows		--		
<b>TOTAL LIABILITIES:</b>		<b>100,923</b>	<b>100,923</b>	<b>23,787</b>
<b>EQUITY AND OTHER CREDITS:</b>				
Control Accounts		--		
Fund Balances		--		
Prior Year Fund Balance		--		
Endowment Fund-Original		--		
Endowment Fund-Income		--		
FB Professional Development		--		
FB Salary Equity		--		
FB Capital Equipment		--		

REPORT FGRCOBS  
COAS: W  
FISCAL YEAR: 17

Wharton County Junior College  
Combined Balance Sheet--All Fund Types and Account Groups  
31-OCT-2016  
(With comparative totals for 31-OCT-2015 )  
(amounts expressed in dollars)

RUN DATE: 11/08/2016  
TIME: 01:35:29 PM  
PAGE: 6

Fiduciary Fund Types

	Quasi Endowment Fund	Endowment Funds	Current Year 2017	Prior Year 2016
<hr/>				
EQUITY AND OTHER CREDITS:				
FB Investment Gain And Loss		--		
Fund Balance Receivables		--		
Reserved-Undesignated		--		
FBTC Operating Fund Balance		--		
Plant Fund Balance		--		
Bond Fund Balance		--		
Scholarship		--		
Fund Balance-Rounding Diff		--		
Fund Balances:				
Reserve for Encumbrance		--		
Fund Balance		9,374,364	9,374,364	8,953,162
Reserve For Operations		--		
TOTAL EQUITY AND OTHER CREDITS:		9,374,364	9,374,364	8,953,162
<hr/>				
TOTAL LIABILITIES, EQUITY AND OTHER CREDITS:		9,475,287	9,475,287	8,976,949
<hr/>				
=====				

Account Groups

	Repair and Replacement	Debt Retirement Bond Fund	Investment in Plant Fund	Unexpended Plant Fund	Current Year 2017	Prior Year 2016
<b>ASSETS and OTHER DEBITS:</b>						
<b>ASSETS:</b>						
Cash	13,240,016	507,204	--	-11,594,073	2,153,147	6,248,575
Cash Investments	--	--	--	19,768,760	19,768,760	15,413,773
Accounts Receivable	--	--	--	11,785	11,785	2,192
Taxes Receivable	--	--	--	--	--	--
Local, St & Fed Agency Receivable	--	--	--	--	--	--
Due From Other Funds	--	--	--	--	--	--
Prepaid Expense	--	--	--	--	--	--
Property, Plant & Equipment	--	--	24,734,031	--	24,734,031	23,915,912
Deferred Outflows	--	--	--	--	--	--
<b>TOTAL ASSETS AND OTHER DEBITS:</b>	<b>13,240,016</b>	<b>507,204</b>	<b>24,734,031</b>	<b>8,186,472</b>	<b>46,667,723</b>	<b>45,580,452</b>
<b>Liabilities, equity and other credits</b>						
<b>LIABILITIES:</b>						
Accounts Payable	--	--	--	--	--	--
Employee Benefits Payable	--	--	--	--	--	--
Payroll Taxes Payable	--	--	--	--	--	--
Accrued Liabilities	--	--	--	--	--	--
Deferred Revenue	--	--	--	--	--	--
Long Term Debt	--	--	2,294,087	--	2,294,087	2,589,670
Net Pension Liability	--	--	--	--	--	--
Deposits Payable	--	--	--	--	--	--
Due To Other Funds	--	--	--	--	--	--
Scholarships-Designated Donations	--	--	--	--	--	--
Scholarships-Non-designated	--	--	--	--	--	--
Donatio	--	--	--	--	--	--
Deferred Inflows	--	--	--	--	--	--
<b>TOTAL LIABILITIES:</b>			<b>2,294,087</b>		<b>2,294,087</b>	<b>2,589,670</b>
<b>EQUITY AND OTHER CREDITS:</b>						
Control Accounts	--	--	--	--	--	--
Fund Balances	--	--	--	--	--	--
Prior Year Fund Balance	--	--	--	--	--	--
Endowment Fund-Original	--	--	--	--	--	--
Endowment Fund-Income	--	--	--	--	--	--
FB Professional Development	--	--	--	--	--	--
FB Salary Equity	--	--	--	--	--	--
FB Capital Equipment	--	--	16,316,287	--	16,316,287	14,214,818





Memorandum Only

	Current Year 2017	Prior Year 2016
<b>ASSETS and OTHER DEBITS:</b>		
<b>ASSETS:</b>		
Cash	8,089,849	10,612,180
Cash Investments	43,524,411	39,720,135
Accounts Receivable	1,143,728	996,945
Taxes Receivable	349,322	320,601
Local, St & Fed Agency Receivable	13,907	28,890
Due From Other Funds	149,042	69,380
Prepaid Expense	35,057	33,304
Property, Plant & Equipment	24,734,031	23,915,912
Deferred Outflows	2,267,905	886,346
<b>TOTAL ASSETS AND OTHER DEBITS:</b>	<b>80,307,255</b>	<b>76,583,693</b>
<b>Liabilities, equity and other credits</b>		
<b>LIABILITIES:</b>		
Accounts Payable	140,634	14,436
Employee Benefits Payable	173,475	174,882
Payroll Taxes Payable	-	-
Accrued Liabilities		
Deferred Revenue	447,653	497,445
Long Term Debt	2,294,087	2,589,670
Net Pension Liability	5,747,658	5,031,677
Deposits Payable	335,060	314,255
Due To Other Funds	149,042	69,380
Scholarships-Designated Donations	102,178	95,150
Scholarships-Non-designated	137,784	130,395
<b>Donatio</b>		
Deferred Inflows	2,169,564	1,538,983
<b>TOTAL LIABILITIES:</b>	<b>11,697,135</b>	<b>10,456,275</b>
<b>EQUITY AND OTHER CREDITS:</b>		
Control Accounts	151	91
Fund Balances		
Prior Year Fund Balance	7,029,039	5,019,854
Endowment Fund-Original		
Endowment Fund-Income		
FB Professional Development		
FB Salary Equity		
FB Capital Equipment	16,316,287	14,214,818
FB Investment Gain And Loss		
Fund Balance Receivables	-	-
Reserved-Undesignated		
FBTC Operating Fund Balance		

REPORT FGRCOBS  
COAS: W  
FISCAL YEAR: 17

Wharton County Junior College  
Combined Balance Sheet--All Fund Types and Account Groups  
31-OCT-2016  
(With comparative totals for 31-OCT-2015 )  
(amounts expressed in dollars)

RUN DATE: 11/08/2016  
TIME: 01:35:29 PM  
PAGE: 10

Memorandum Only

	Current Year 2017	Prior Year 2016
Plant Fund Balance		
Bond Fund Balance		
Scholarship		
Fund Balance-Rounding Diff	-	
Fund Balances:		
Reserve for Encumbrance	1,918,958	1,497,517
Fund Balance	43,345,684	45,395,138
Reserve For Operations		
TOTAL EQUITY AND OTHER CREDITS:	68,610,120	66,127,418
TOTAL LIABILITIES, EQUITY AND OTHER CREDITS:	80,307,255	76,583,693
	=====	=====