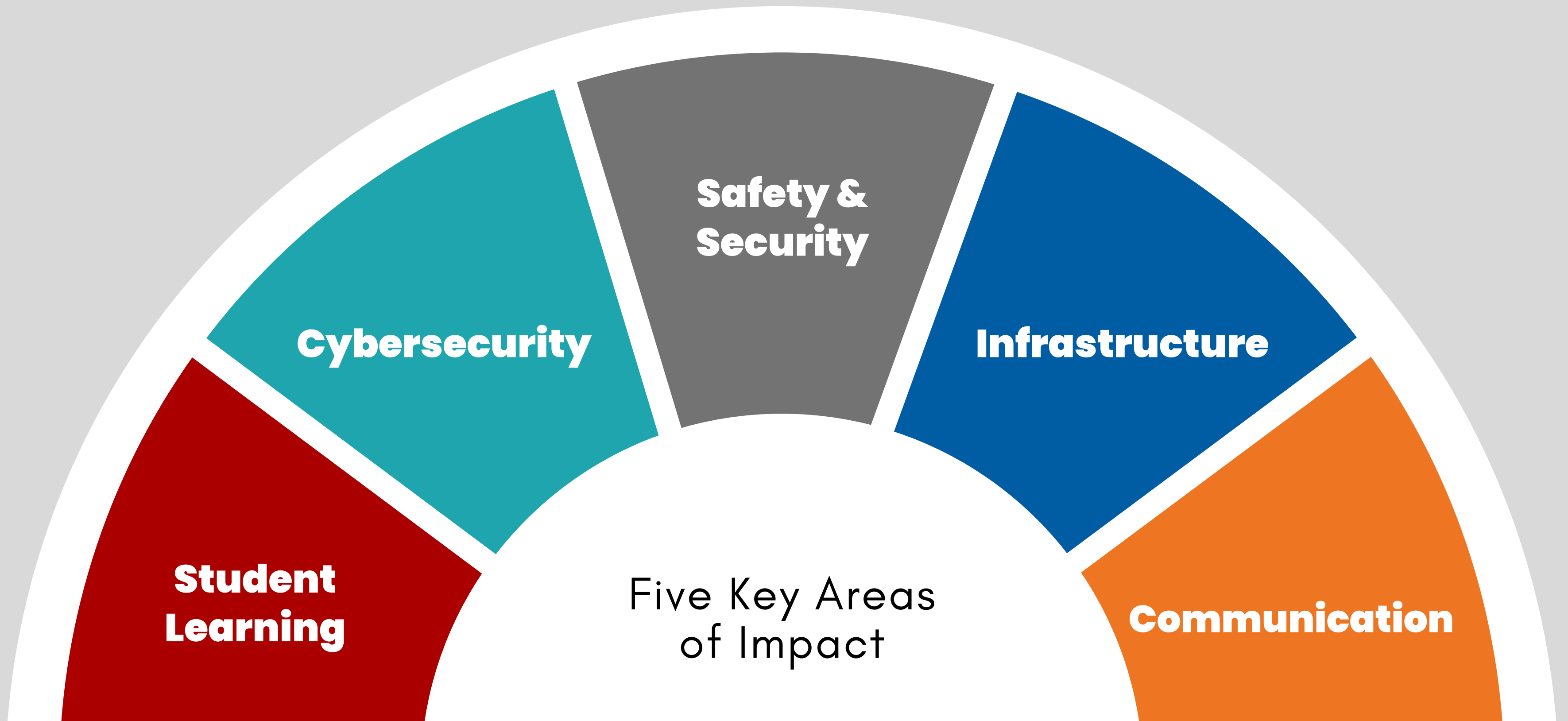


ROSEVILLE AREA SCHOOLS

Security & Technology Levy

May 13, 2025

Technology in Roseville Area Schools





THE ROLE OF TECHNOLOGY

Technology plays a critical role in school **safety and security** by enabling real-time communication, monitoring, and rapid response to potential threats, ensuring a safer environment for students and staff.

KEY INVESTMENTS

Internal and external video cameras, staff security badges, automated entrance & exit management

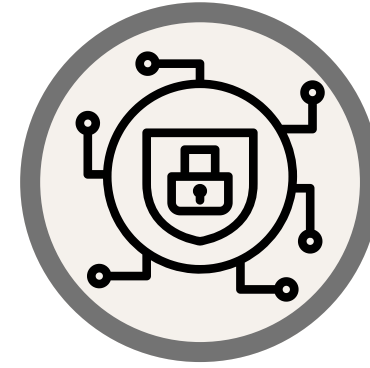


THE ROLE OF TECHNOLOGY

Technology plays a fundamental role in today's classrooms by enhancing **student learning** through personalized instruction, interactive resources, and access to a wealth of information and tools that foster engagement and critical thinking.

KEY INVESTMENTS

Technology hardware (e.g., 1:1 student iPads, teacher laptops), learning management software, e-curriculum, career & tech curriculum tools



THE ROLE OF TECHNOLOGY

Technology is essential in **cybersecurity** for schools, protecting sensitive student data, securing online learning platforms, and safeguarding against cyber threats to ensure a safe digital environment for education.

KEY INVESTMENTS

Two-factor authentication for staff portal, threat detection software, monthly cybersecurity external monitoring services



THE ROLE OF TECHNOLOGY

Technology is integral to school **infrastructure**, providing the foundational systems that support seamless communication, efficient data management, and secure, reliable access to digital resources for students and staff.

KEY INVESTMENTS

Wi-fi access points, telephony systems, data storage systems, internet filtering, network connectivity



THE ROLE OF TECHNOLOGY

Technology plays a key role in school **communication** by providing efficient and accessible ways to keep families, students, and staff connected and informed. This includes translation features to ensure all families, have equitable access to information.

KEY INVESTMENTS

Mass notification systems, family-school communication platforms, virtual meetings and webinars, internal messaging systems, website



MISSION

Excellence, Innovation & Equity in All We Do

Each learner experiences a sense of belonging and a joy of learning, is inspired and prepared to reach their potential, and contributes to our communities.

VISION

EQUITY VISION

Roseville Area Schools is committed to ensuring an equitable and respectful learning environment for every student, family, and staff member regardless of race, gender, gender identity, sexual orientation, socioeconomic status, ability, home or first language, religion, national origin, age, and physical appearance.

GOALS & KEY STRATEGIES

#1

Our graduates are prepared to achieve their goals and aspirations.

- Ensure students are college- and career-ready
- Deliver a challenging, joyful, and safe learning environment
- Deliver innovative, effective practices and systems

#2

Our learners contribute to an equitable, caring society.

- Cultivate student engagement and joy in learning
- Support learner resiliency (student social and emotional learning and mental health)
- Amplify student leadership and voice in decision-making
- Prepare learners to be racially and socially responsive

#3

We are a culturally responsive, inclusive, anti-racist district.

- Ensure educator commitment to anti-racist practices
- Hire and retain a diverse workforce
- Develop equitable leaders
- Develop a culturally responsive evaluation system
- Build a culture of belonging where all feel welcome, included, and safe

#4

The community is united behind meeting student needs.

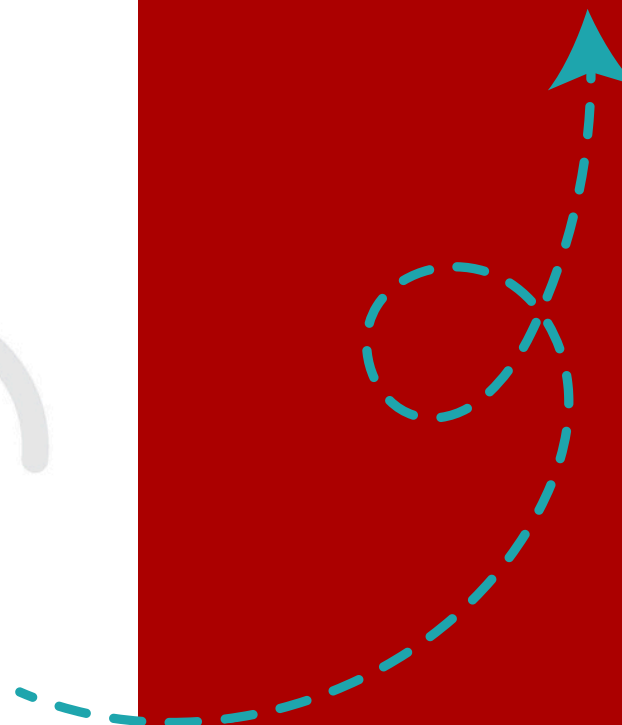
- Partner with families and the community to support student success
- Build a culture of belonging

#5

We are financially secure.

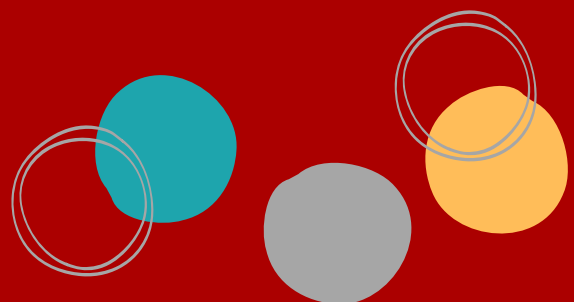
- Cultivate and maintain community trust
- Secure and allocate financial resources to support the district's mission and vision

A technology levy provides a dedicated source of funding to support the essential and expanding role of technology in education, ensuring students and staff have access to the tools and resources needed for success in today's digital world.



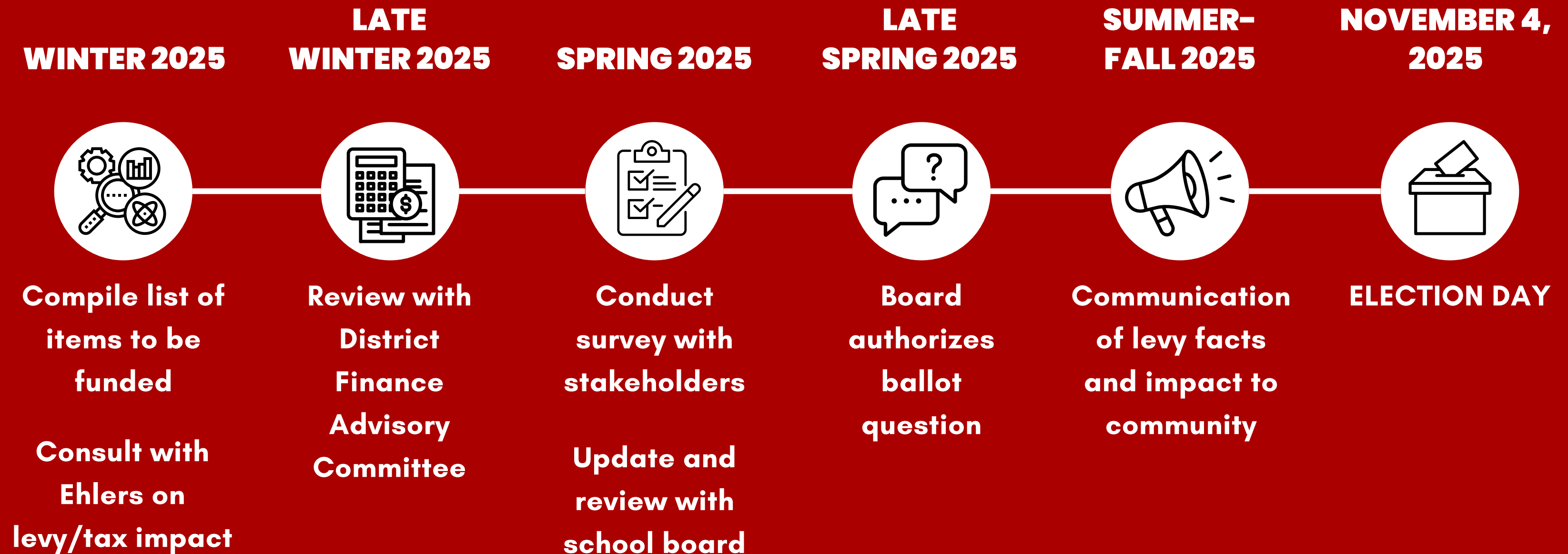
Technology Revenue & Expenses

Yearly Technology Software & Support costs		\$2,151,991.00
Security- Video cameras ,physical security (doors, card readers) and Cybersecurity		\$406,333.33
Technology Capital annual cost (includes printer center costs)		\$2,495,466.67
	Total	\$5,053,791.00



Security & Technology Levy

TIMELINE



Questions