

Return to School Teaching & Learning Plan Red Wing Public Schools



Aug 17, 2020 - DRAFT

Karsten Anderson - Superintendent



Guiding Principles

- Health & Safety
- Equity
- Essential Student Learning
- Student, Family, & Staff Support
- Clear & Consistent Communication
- Patience, Flexibility, and Empathy



Instructional Model Options

- **Full Distance Learning**
- **Hybrid Learning**
- **Face to Face Learning**

* All Instructional Models also have a 100% online option for parents to consider.



Scenario 1: Full Face-to-face Learning (Virtual option)

Monday

Tuesday

Wednesday

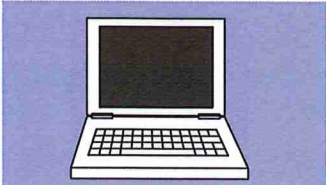
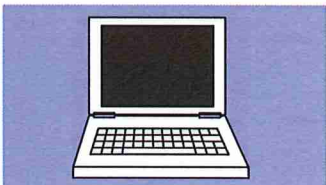
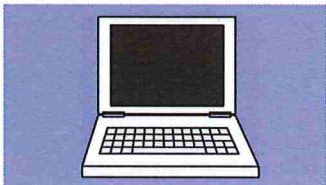
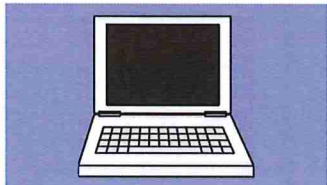
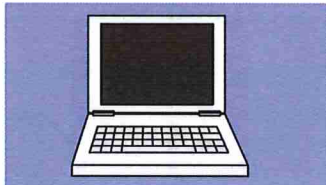
Thursday

Friday

EC - 12
@ Colvill, Neighborhood
Schools, RWHS



With Virtual
Option





Scenario 2: Hybrid Learning

Monday

Tuesday

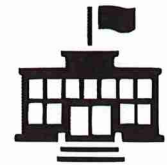
Wednesday

Thursday

Friday

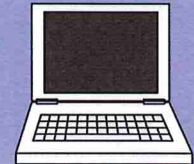
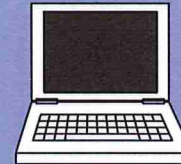
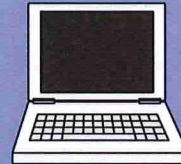
EC - 4

@ Colvill & Neighborhood
School



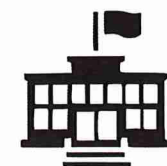
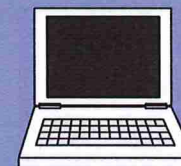
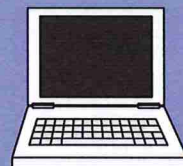
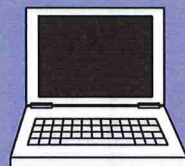
5 - 12

5-6 @ Neighborhood
Schools
7-12 @ RWHS
COHORT A



5 - 12

5-6 @ Neighborhood
Schools
7-12 @ RWHS
COHORT B
HALF of the STUDENTS





Scenario 3: Full Distance Learning

Monday

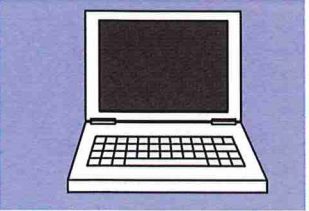
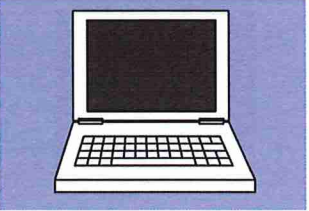
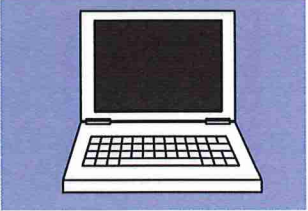
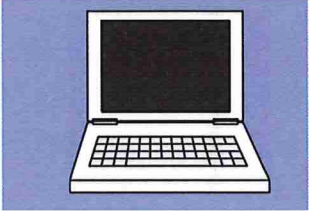
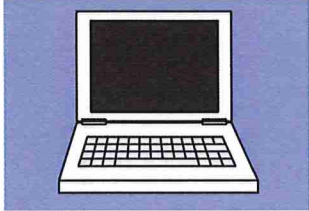
Tuesday

Wednesday

Thursday

Friday

EC-12





Challenges with each model

- **In Person Learning**
 - Health and safety of staff and students
 - Increased costs associated with health and safety (transportation, staffing, nutrition)
 - Percentage of staff and students will opt out
- **Hybrid Learning**
 - Complex scheduling difficult to communicate and implement
 - Health and safety challenges related to social distancing and transportation
 - Possible staffing shortages
- **Distance Learning**
 - Scheduling, structure, consistency and teacher interaction
 - Access to technology and internet
 - Home supervision and facilitation for working families



What does the Hybrid/In Person daily schedule look like?

- Colvill
 - Return on usual schedule
 - With social distancing and CDC recommendations
- K-6 Buildings
 - Staff and Students follow daily schedule in EVERY model
 - Elementary Schools will have some split classrooms with licensed teachers (co-teaching model)
 - K-6 students will have two scheduled recesses during the day along with a mid-day break after lunch
 - Curriculum resources will be utilized and specials content will be built into the core subjects
 - New learning per course must be recorded for our distance learners



What does the Hybrid daily schedule look like?

- Red Wing High School (7-12)
 - Staff and students follow daily schedule in EVERY model. No matter the model, teachers will be available and logged in for students during the class period time.
 - Students will follow their schedule during the day
 - Block Schedule (4 classes per quarter)
 - We have a few models of hybrid teaching to present to teachers and community partners on and tap into them on how to best adapt it to their subject area.
 - New learning per course must be recorded for our distance learners



What does the Hybrid daily schedule look like?

- TowerView
 - Similar to RWHS
 - Group A - Monday/Tuesday mornings in person - afternoon virtual
 - Wednesday - Virtual Individualized Learning
 - Group B - Thursday/Friday mornings in person - afternoon virtual
 - We have a few models of hybrid teaching to present to teachers and community partners on and tap into them on how to best adapt it to their subject area.



Interventions/Specials K-6

- What?
 - Co-teaching within a classroom
- Why?
 - Based on CDC recommendations
 - Social Distancing Protocols
 - Safety of staff
 - Need of licensed staff in each classroom
- Will there only be core content given to our kids?
 - No, the model of co-teaching is meant for a push-in approach to learning. We will reach out to our active community organizations and experts within the classroom to partner in meeting the needs of our students in a creative way during and after school.



What are the online only options?

- Edgenuity - Full online and enrolled in RWPS
(Committed to Distance Learning per semester)
- Distance Learning with your assigned class virtually
(Capacity to come back and forth)



Edgenuity

VIRTUAL INSTRUCTOR

Serves as the state-certified, highly qualified teacher for a group of students, and uses real-time data to inform frequent communications with students, parents, and facilitators, thus ensuring appropriate individualized instruction for differentiated learning styles.



ON-SITE MENTOR

Supervises and monitors students while also hosting regular "big idea" web sessions and serving as escalation manager when students, parents, and facilitators have questions or concerns.



SUCCESS COACH

Offers on-site mentors support, basic training, and strategies for student success and academic achievement. Success coaches also collaborate with on-site mentors to devise engagement plans for groups of students who may be struggling.



Student

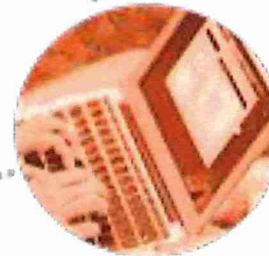
SPECIAL EDUCATION COORDINATOR

Provides an additional layer of support to teachers and schools offering online courses to students who have an IEP or 504 plan, or are homebound. Our Special Education Coordinators also provide academic support to these students.



CURRICULUM

Presents engaging, state standards-aligned content that can be customized to meet the unique needs of a diverse student population. It is delivered through a combination of teacher-led videos, interactive media, and text to promote a varied approach to learning that addresses multiple learning modalities.



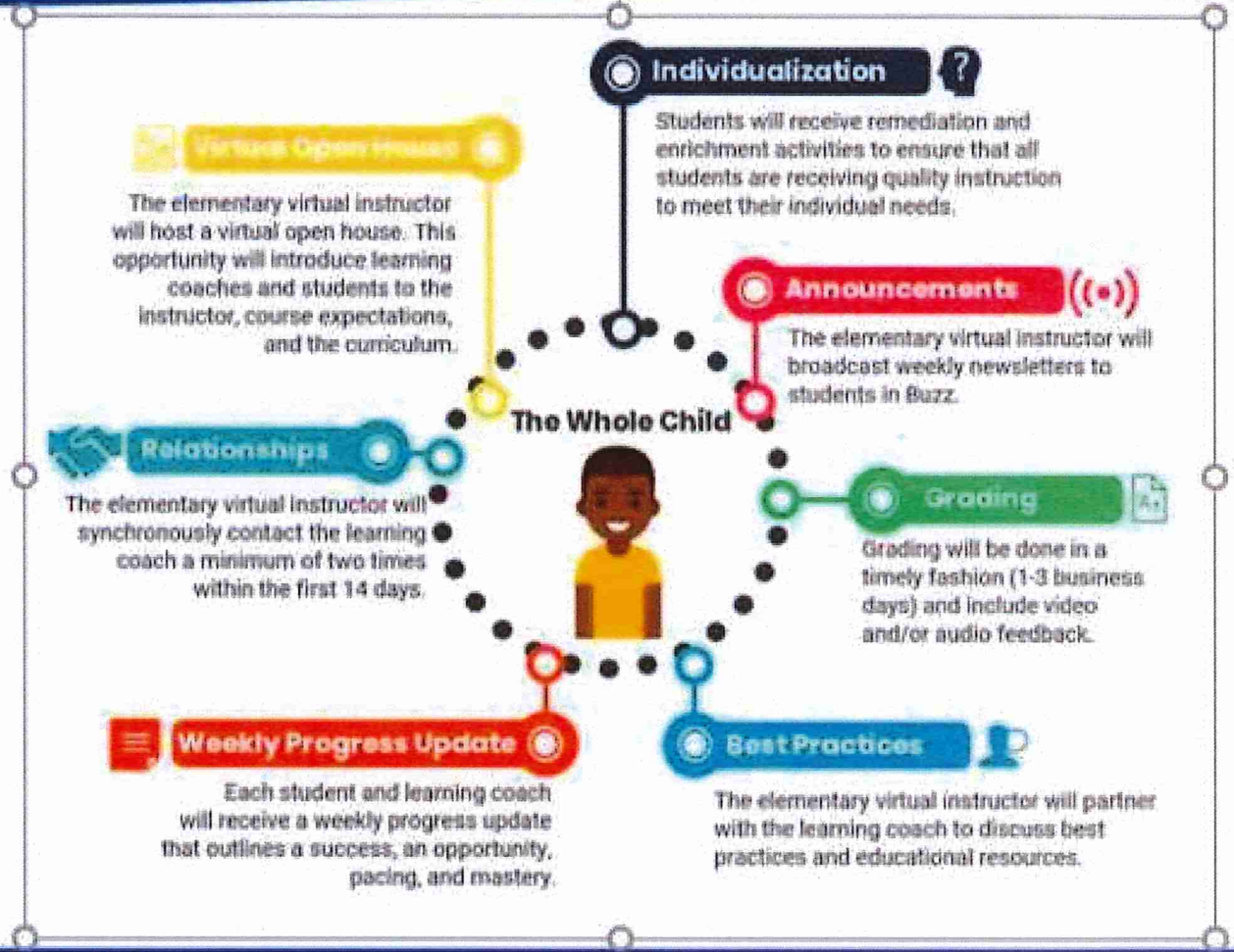
CONCEPT COACH

Delivers real-time, on-demand, one-on-one tutoring in secondary core subject areas. Concept coaches are available six days a week any time students need help.





Whole Child Planning





What are the online only options?

- Edgenuity
 - 6-12 can take up to 4 classes per quarter



Will RWPS Distance Learning be the same as the spring?

- No
- RWPS has developed stronger distance learning options that:
 - Include greater rigor, consistency, and expectations
 - Meet the needs of families regarding technology (1 to 1)
 - Require more teacher interaction and more student to student interaction



What will be different in Distance Learning?

- Enhanced Professional Development for Google Suite
- Curriculum resources and materials will supplement online learning
- Students and teachers can expect a structured schedule for instruction and learning
- Lessons will be designated as most effective live or pre-recorded
- Teachers will be guided on effective online planning and collaboration
- We will added days to the professional development at the beginning of the year to be prepared



Expectations & Accountability

- Teacher Expectations
 - Responsible for student learning in their classroom
 - Student to teacher interactions will be required on a daily basis per course
 - Teachers will be available and logged in for students during the assigned class period
 - Keep up a Google Classroom in every scenario
- Accountability
 - Principals and Assistant Principals will hold staff accountable to teacher expectations through monitoring Google Classrooms and attendance



Professional Development to support the plan

- Hoonuit - Project Based Learning and Co-teaching
- Google Suite Training with virtual communication tool box
- Wonders Training K-5
- MyMath 101 for Co-teachers
- Perspective Taking with Wing Huie
- Vertical Alignment E-12
- Sacred PLC time at least 3 times per month
- Flight Paths - InSciEd Out
- How To Training for students and staff