



SUNBELT
RENTALS

TEMPORARY
STRUCTURES

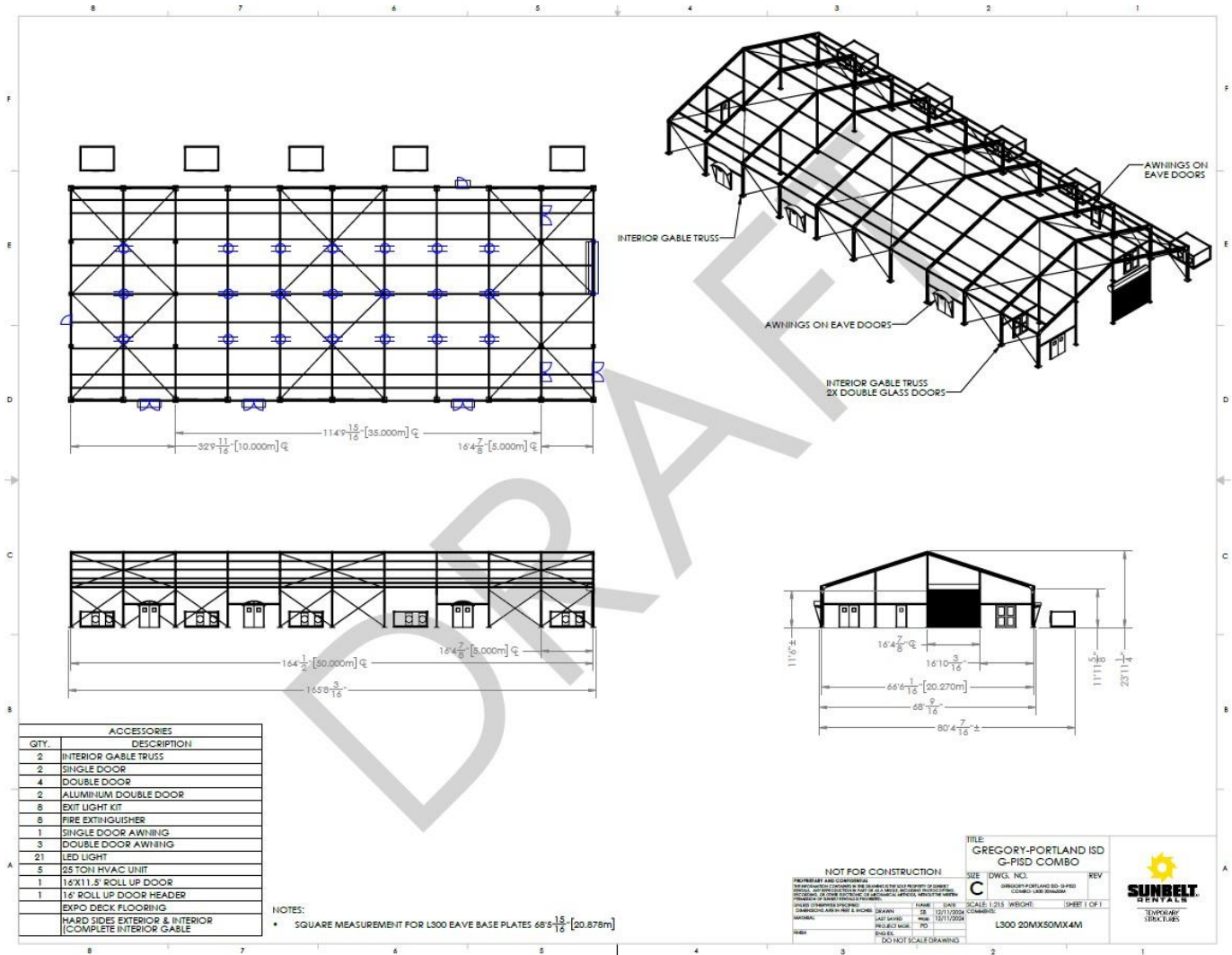
PROPOSAL

#1 RENTER OF PORTABLE SHELTER IN THE USA

Gregory-Portland ISD
Michael Thieme

Sunbelt Temporary Structures
(361) 929-8026
SunbeltRentals.com

Project Design



Project Installation Timeline

Estimated 8-day structure installation & 5-day structure dismantle

Location:

Portland, TX

Installation:

TBD

Dismantle:

TBD

Project Scope and Budget

Structure Scope

QTY: 1 – 66' x 164'

Approximately 10,765 square feet of interior space

Leg Height: 13' | Peak height: 23.5'

The structure also includes the following accessories:

- (24) LED lights
- (2) Single Personnel Doors with Emergency Egress Package
- (6) Double Glass Personnel Doors with Emergency Egress Package
- (1) 16'w x 12.5'h OH Roll-up door with Chain Operation
- Stake Anchor Package – 42" Stakes
- (5) 25-ton HVAC units
- Expo Deck Flooring
- Guardian Insulated Hard-side Panels
- (2) Internal Divider Walls

Please also note the following electrical specifications for your project:

- LED lights require 120-volt, 1 amp (24x)
- Exit lights require 120-volt, 1 amp (8x)
- HVAC requires 480-volt, 60 hertz, 3 phase (5x)

Project Budget *28-day billing cycle – based on minimum lease duration

Delivery, Installation:	\$61,018 (8 days)
Takedown and Site Recovery:	\$46,894 (5 days)
Rental Rate (9 months=10 periods):	\$42,494 (per billing cycle)
Rental Rate (12 months=13.25 periods):	\$37,123 (per billing cycle)
Estimated 9 Month Project Total:	\$532,852
Estimated 12 Month Project Total:	\$599,792

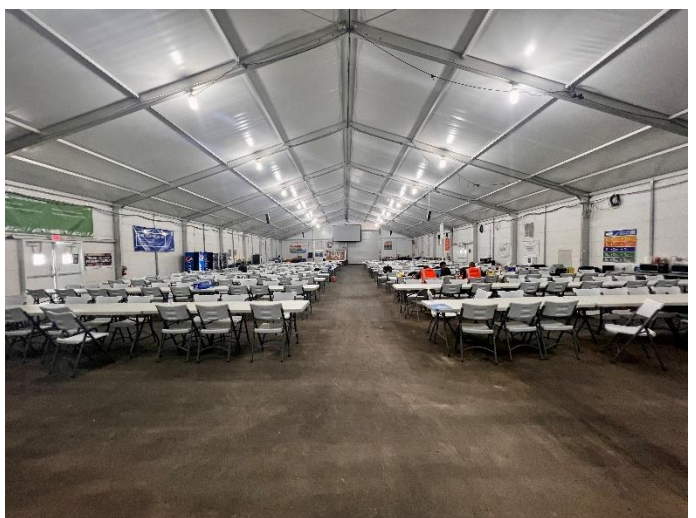
A Sunbelt Temporary Structures lease includes structure maintenance during the lease term. Sunbelt will provide semi-annual inspection and service of the structure and related equipment. Safety-critical repairs will be an emergency dispatch utilizing Sunbelt crews or local service partners. Non-safety-critical repairs and semi-annual inspections will be performed as Sunbelt Temporary Structures crews travel through the area. **Customer responsible for HVAC preventative maintenance.**

Turnkey Installation and Dismantle**

Terms of Complete Turn-Key Installation and Dismantle

- Sunbelt Rentals to provide all non-union labor, all specialty installation tools, and equipment needed to complete installation and dismantle. Working 10 hours per day, 7 days a week until the job is complete.
- Includes all transportation costs for materials
- Does not include any electric supply or connection*. LED fixtures and Exit signs are corded along the truss to ground level
- Additional terms are listed below in the notes below.

Past Performance



Why Sunbelt Rentals

Sunbelt Rentals, formerly Mahaffey USA, is the leading provider of semi-permanent structures in the U.S. For nearly a century, engineering focused leadership has resulted in some of the most important innovations and improvements within the temporary fabric structures industry.

Whether you're searching for an original idea for a complex task or a simple solution to a straightforward need, our unmatched product line and dedicated teams are here.



Nearly 100 Years at the Cutting-Edge

Our history spans such achievements as fabricating tents during World War II, installing the first clearspan fabric structure in the U.S., and receiving multiple patents, most recently for our MAX756 Blast Resistant Shelter.

Responding to the unprecedented challenges of the COVID-19 pandemic, we are proud to have developed and delivered such solutions as temporary vaccination tents with climate-controlled storage and hygiene stations, and thermal scanning checkpoints capable of screening thousands of employees for companies each day.



Our People

Working year-round installing and dismantling hundreds of structures a year, Sunbelt's highly experienced crews are unrivaled in both technical skill and professional expertise from those typically found in the tent or structure rental business.

With an uncompromising goal of ZERO incidents, our personnel have completed OSHA safety training and are subject to a rigorous random drug-testing program, among other safety measures.

We also typically do not use third-party contractors or temporary workers, guaranteeing adherence to Sunbelt's strict guidelines and ensuring no disruption to installation timelines.



Our Fully Engineered Structures

With multiple structure types in our inventory, you can rely on Sunbelt Rentals to select the most suitable structure for your needs, taking into consideration wind and snow loads, occupancy, and the type and height of materials stored.

During your project, I will collaborate with an independent engineer to ensure the structure meets local building code. If necessary, Sunbelt Rentals can also provide a full analysis stamped by a licensed engineer.



Your Investment

Sunbelt Rental's pricing is turnkey. Surprise costs and deceptive pricing can derail budgets, and we do not engage in either practice, taking pride in providing clients with straightforward estimates for installation and lease.

Our price schedules include all labor, transportation and equipment for the installation of the structure. The only items not included in our pricing are permits and sales/usage taxes.

The Next Steps

Once you're ready to move forward, we will execute the following:

1 Facility Site-Visit

To visualize your solution in place, take measurements and plan for installation, if needed for complex jobs.

2 Addressing Your Final Questions

Aside from any remaining questions you have, this is the stage where we can make adjustments or changes to your proposal, and address any final objectives of the project.

3 Reserving Your Structure

Once a Lease Agreement has been signed, we can reserve your structure and commence the installation process when required.



On behalf of the entire Sunbelt Rentals team, we're excited to work with you and committed to delivering an exceptional service experience every step of the way.

All the best,

Peyton Drake

Project Manager

Sunbelt Temporary Structures

361-929-8026

peyton.drake@sunbeltrentals.com

www.SunbeltRentals.com

Dedicated, Responsive Professionals Creatively Solving Problems

Pricing Terms and Conditions

This proposal has been priced based on the following terms and conditions. Please review these items with care. I am available to address any questions you may have about the fine print below.

- 1. This proposal is based on a minimum lease term. Pricing is reflective of this minimum lease term and the contract must fulfill the minimum duration. The term can be extended should your project require the structure(s) for a longer period.**
2. Proposal includes all non-prevailing wage and non-union construction services. If a prevailing or union wage is required, this quote will be refigured to include such wages.
3. Pricing assumes anchoring into an unobstructed, level surface up to 42" in depth.
4. Sunbelt Structures' crews normally work 10-hour days, seven days per week, until the job is completed. This project has been priced accordingly.
5. Proposal includes up to 30 minutes of site-specific training. Additional site-specific safety training will be billed accordingly.
6. The job site is accessible with a semi-truck within 50' of work site. Structure requiring additional travel distance after off-loading may require additional charges.
7. Extenuating protection measures for shielding ground surfaces from equipment operation has not been included or accounted for. Should ground surface protection measures be required, a plan must be developed prior to Sunbelt Structures' arrival on site.
8. Applicable taxes, permitting and associated fees, bonding, and engineering services are not included.
9. Should a PE sealed design engineering package be required, add \$5,000 per structure for Sunbelt Engineering Services.
10. This proposal is valid for 30 calendar days and is subject to equipment and crew availability at the time the Lease Agreement is signed.
11. This quote does not include ground prep.
12. Lightning protection not included.
13. Customer responsible for HVAC preventative maintenance. In the event of a repair resulting from neglect, the customer will be responsible.
14. Lessee agrees to pay Lessor (a) the rental fee. The Rental Fee includes charges for delivery, installation, dismantle and removal of the Personal Property. Due to the volatility of fuel prices, Lessor reserves the right to add a fuel surcharge to the final invoice if the average price of diesel fuel exceeds \$ 4.00 per gallon according to the Weekly Retail On-Highway Diesel Fuel Price reported by the U.S. DOE. If the Personal Property is not made ready for pick up on the Dismantling Date, the Rental Fee charged Lessee shall continue to accrue until the Personal Property is made ready for pick up by Lessor. All other charges owing by Lessee shall be due and payable upon demand. In the event this Agreement is terminated by Lessee prior to the Installation Date, (i) the deposit shall be 50% refundable if notice of termination is delivered in writing at least 60 days prior to the Installation Date, (ii) should the Lessee fail to give written notice of termination 60 days before the Installation Date, the deposit shall be fully earned by Lessor. If the parties do not agree otherwise, in writing, the lease shall automatically renew on a month -to-month basis with all other terms remaining the same. In the event the structure dismantles early, the remaining months of the contract are still owed.