

NW CORNER SECTION 22



WEST 1/4 CORNER SECTION 22

1,217,890

- LEASE PARCELS
- SALE PARCELS
- APPROX. WETLAND VEGETATION

WEST LINE OF SECTION 22

AIRPORT ROAD
R.O.W. OF AIRPORT ROAD

SW CORNER SECTION 22

STATE HIGHWAY M-32 & SOUTH LINE OF SECTION 22

252,695



ENGINEER			
SURVEY	MWH	JJ	TS
DRAWN	MWH	JJ	
CHECKED	DTK	JJ	
APPD		JJ	
SCALE	NONE		

PROPOSED LAND DIVISION
OF COUNTY PARCEL
WEST SIDE OF AIRPORT ROAD
SECTION 22, T31N, R7E, WILSON TOWNSHIP

PROJECT NUMBER 13.005 CLIENT ALPENA COUNTY BOARD OF COMMISSIONERS SHEET 01 OF 01



EXIST. PARCEL

EXIST. PARCEL

EXIST. PARCEL

EXIST. CONSERVATION EASEMENT

EXIST. PARCEL

PARCEL 1
3.3±
ACRES

PARCEL 2
2.5±
ACRES

PARCEL 3
2.5±
ACRES

PARCEL 4
2.5±
ACRES

PARCEL 5
2.7±
ACRES

PARCEL 6
3.2±
ACRES

PARCEL 24
3.0±
ACRES

PARCEL 25
3.0±
ACRES

PARCEL 26
3.1±
ACRES

PARCEL 27
4.7±
ACRES

PARCEL 23
3.0±
ACRES

PARCEL 18
2.4±
ACRES

PARCEL 19
3.2±
ACRES

PARCEL 22
7.8±
ACRES

PARCEL 17
2.5±
ACRES

PARCEL 16
3.4±
ACRES

PARCEL 13
3.37±
ACRES

PARCEL 15
ACRES

PARCEL 12
2.9±
ACRES

PARCEL 21
4.8±
ACRES

PARCEL 14
5.1±
ACRES

PARCEL 11
2.5±
ACRES

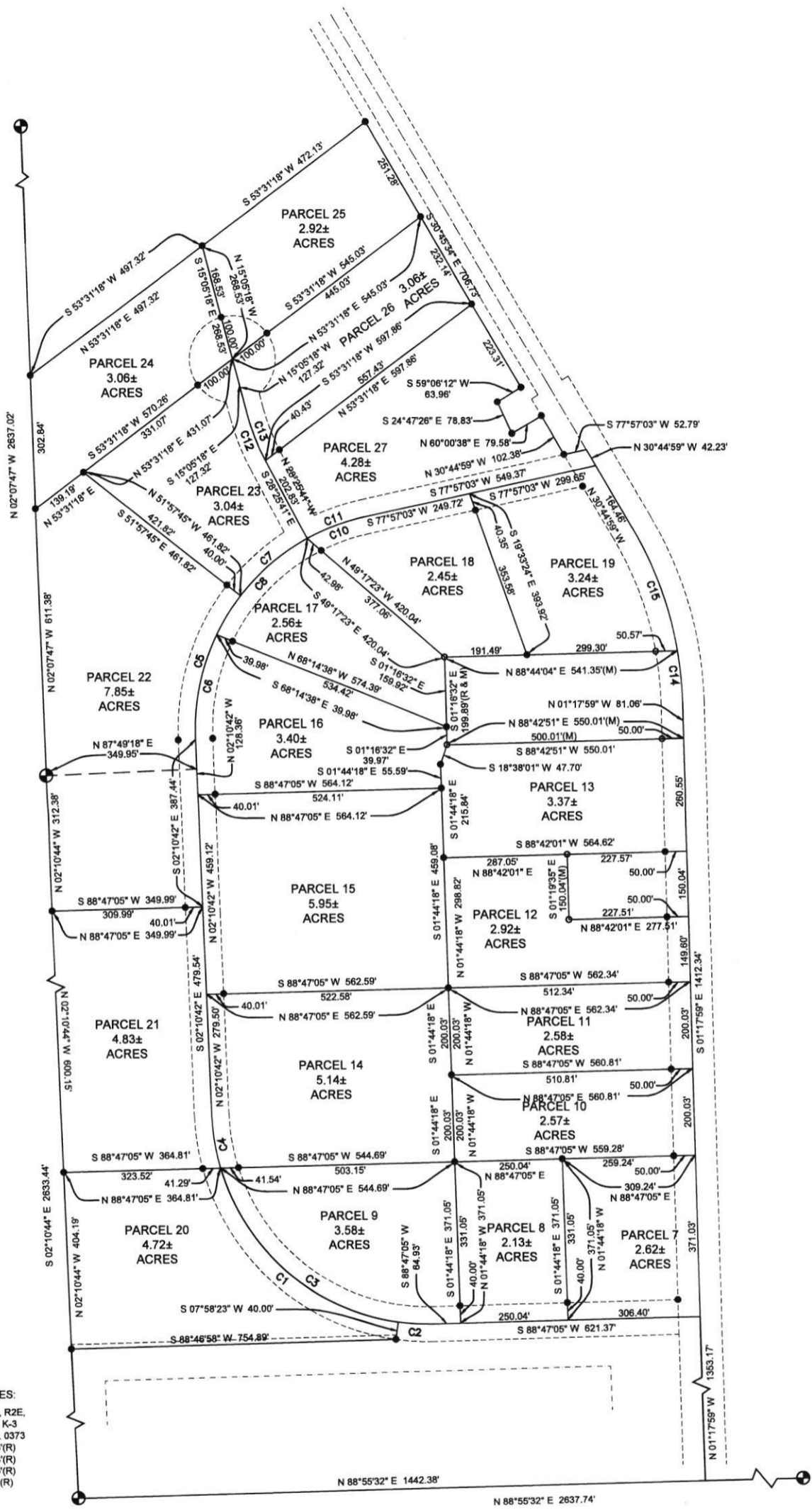
PARCEL 10
2.5±
ACRES

PARCEL 20
4.7±
ACRES

PARCEL 9
3.5±
ACRES

PARCEL 8
2.1±
ACRES

PARCEL 7
2.8±
ACRES



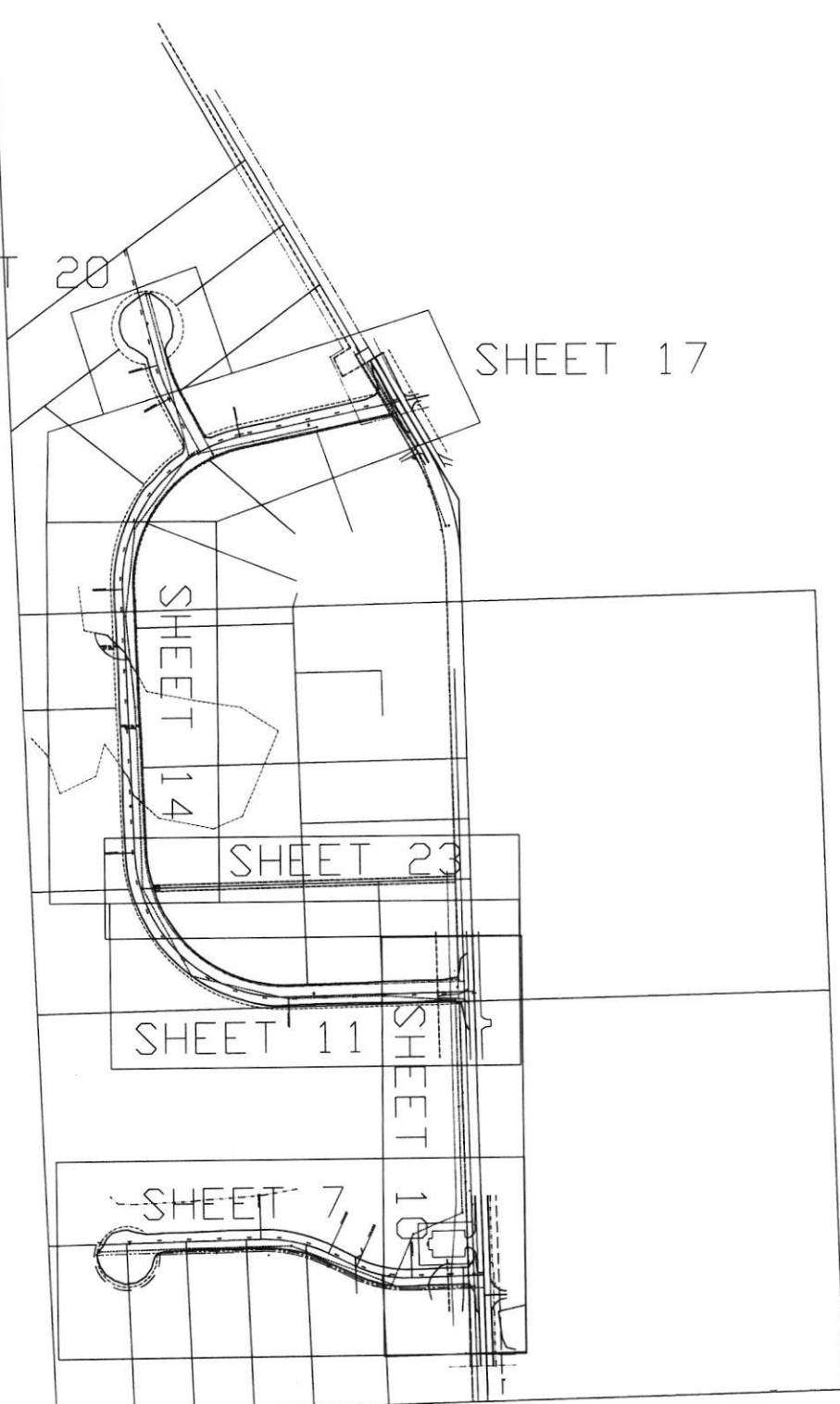
CORNER REFERENCES:
 NW Cor. Sec. 12, T30N, R2E,
 Mont. Co. Remon. Cor., K-3
 LCRC Rec. L. 00012, P. 0373
 N 45° E 13" Oak 16.45'(R)
 N 30° W 9" Oak 22.64'(R)
 S 17° W 8" Oak 22.65'(R)
 S 26° E 7" Oak 26.05'(R)

N 88° 55' 32" E 1442.38'
 N 88° 55' 32" E 2637.74'



SHEET 20

SHEET 17



2

SHEET NO.

HURON
ENGINEERING & SURVEYING, INC.

OVERVIEW SHEET

JOB NUMBER	DATE	ENGINEER
13.004	OCTOBER 18, 2013	RIVARD