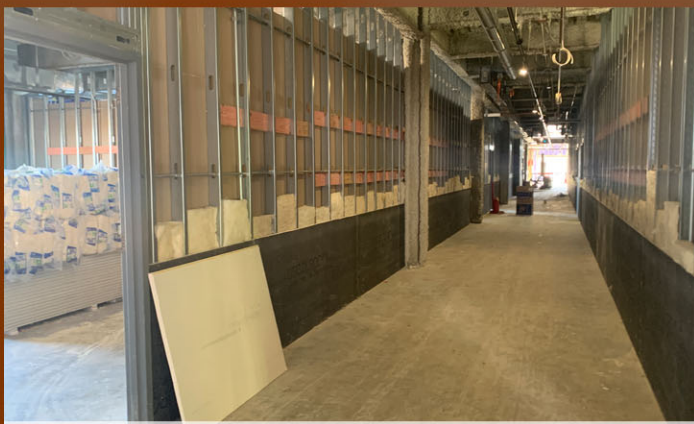


## CELINA ELEMENTARY SCHOOL



EXTERIOR SHEATHING & MASONRY INSTALLATION



CLASSROOM WING CORRIDOR



ROOF MEMBRANE INSTALLED

### CONSTRUCTION STATUS

**SITE WORK**

- SITE UTILITIES - ON-GOING
- EARTHWORK - ON-GOING
- PAVING - NEARING COMPLETION
- COURTYARD CANOPY - ON-GOING

**LOOKING FORWARD**

- COOURTYARD PAVING
- COOURTYARD MASONRY & EIFS

**BUILDING**

- SHOP DRAWING SUBMITTALS - ON-GOING
- FIRE PROOFING - COMPLETE
- ROOF DECK INSULATION - COMPLETE
- EXTERIOR SHEATHING & MASONRY
- MEP OVERHEAD SYSTEM INSTALLATION
- AIR BARRIER INSTALATION
- ROOF MEMBRANE INSULATION
- MASONRY
- METAL STUDS/WINDOW FRAMING

**LOOKING FORWARD**

- INTERIOR FINISHES

