

**IAR Results
2023-2024**

Percentage of Students Meeting or Exceeding Standards in ELA

Grade	Reading						Writing			
	Literary		Information		Vocabulary		Expression		Conventions	
3	31	29 (10)	31	24 (10)	41	29 (16)	29	23 (39)	35	39 (27)
4	37	20 (34)	33	11 (36)	39	31 (16)	48	36 (0)	46	23 (21)
5	38	28 (25)	39	27 (42)	40	23 (15)	45	40 (22)	43	35 (15)
6	48	30 (30)	41	19 (32)	42	23 (32)	56	43 (17)	53	36 (23)
7	40	23 (35)	43	23 (25)	40	34 (25)	47	12 (15)	46	15 (9)
8	53	49 (18)	53	49 (27)	55	58 (20)	51	38 (22)	53	47 (16)
	STATE	JFK	STATE	JFK	STATE	JFK	STATE	JFK	STATE	JFK

() denotes percentage approaching expectations

Percentage of Students Meeting or Exceeding Standards in Math

Grade	Major Content		Supporting Content		Reasoning		Modeling	
3	32	18 (32)	28	21 (31)	44	37 (13)	32	29 (23)
4	30	11 (25)	33	20 (10)	38	28 (18)	33	21 (15)
5	24	0 (13)	32	5 (22)	26	5 (5)	27	8 (8)
6	22	2 (17)	25	9 (15)	27	4 (42)	29	11 (34)
7	26	9 (35)	35	28 (17)	27	8 (23)	29	17 (25)
8	24	15 (35)	26	22 (45)	27	15 (24)	27	9 (18)
	STATE	JFK	STATE	JFK	STATE	JFK	STATE	JFK

() denotes percentage approaching expectations

- The number in the “state” column shows the average percent of students meeting or exceeding state standards
- The number in “JFK” shows the percentage who met or exceeded state standards
- The number in () shows the percentage of students who were close to meeting state standards
- The eighth graders outperformed the state average in vocabulary
- The third graders outperformed the state average in writing conventions
- Unfortunately, all other areas and grade levels scored below the state average
- 5th grade had the least number of students meet state standards in math
 - 5th grade has consistently performed below the state average

- Even though there is a low percentage of students meeting and exceeding standards in some areas, the percentage of students almost meeting is decent
- Janet Moore, a math specialist, worked with teachers during 2022-23 school year. Teachers have implemented ideas into their classrooms.
- Andrew Lister from BHS ROE has been providing professional development on the literacy plan during the 2024-25 school year.
- A new ELA series was adopted for the 2023-24 school year
- A new math series was adopted for the 2024-25 school year

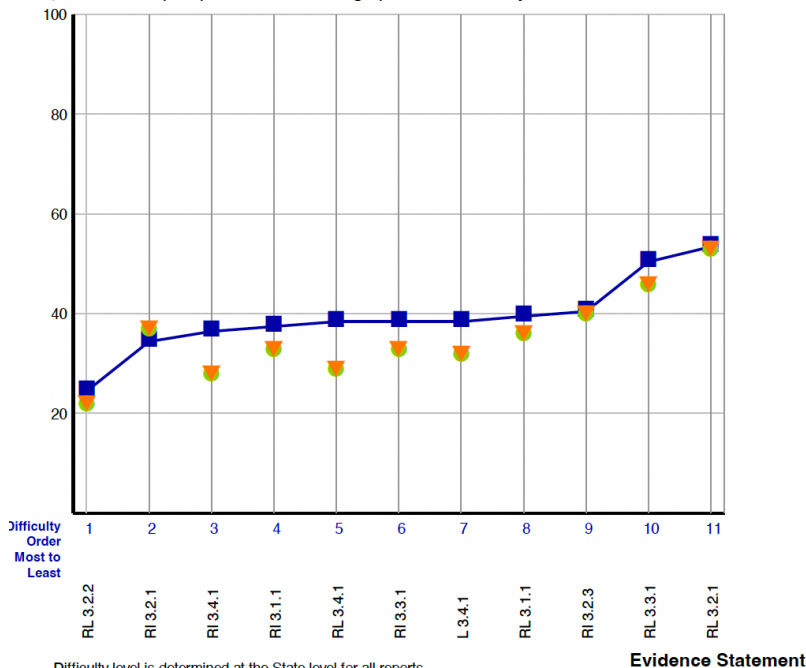
3rd Grade ELA

ENGLISH LANGUAGE ARTS / LITERACY
Grade 3 Assessment, 2023–2024

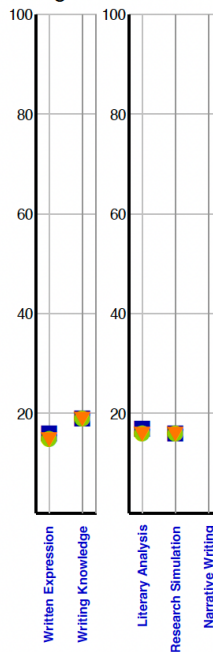
- State
- District
- ▼ School

Students with Valid Scores (62)

Purpose: This report presents the average percent correct by Evidence Statement for school, district and state.



Writing Categories PCR Task



Difficulty level is determined at the State level for all reports.

Evidence Statements not tested in district or school are left blank.

This report is NOT for public review. Distribution within your school/district must be in accordance with state and federal privacy laws, and local school board policy.

3rd Grade Math

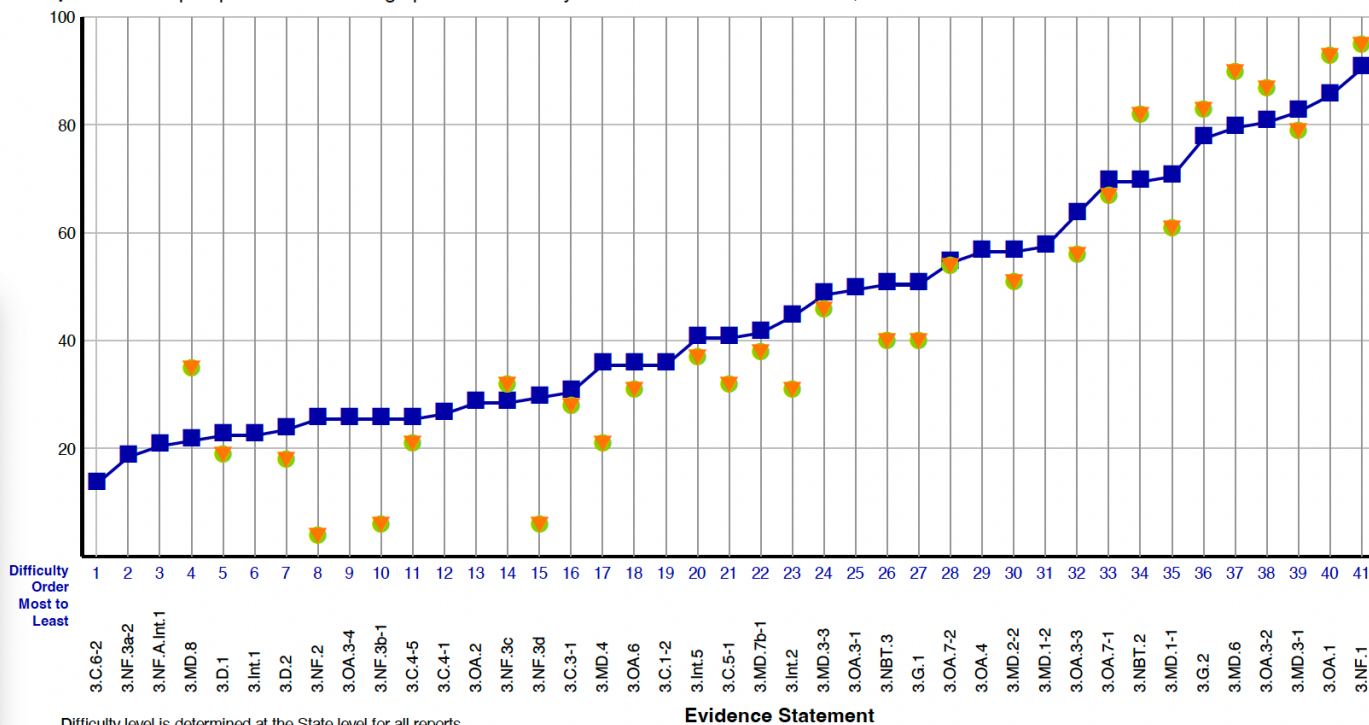
MATHEMATICS

Grade 3 Assessment, 2023–2024

- State
- District
- ▼ School

Students with Valid Scores (62)

Purpose: This report presents the average percent correct by Evidence Statement for school, district and state.



Difficulty level is determined at the State level for all reports.

Evidence Statements not tested in district or school are left blank.

This report is NOT for public review. Distribution within your school/district must be in accordance with state and federal privacy laws, and local school board policy.

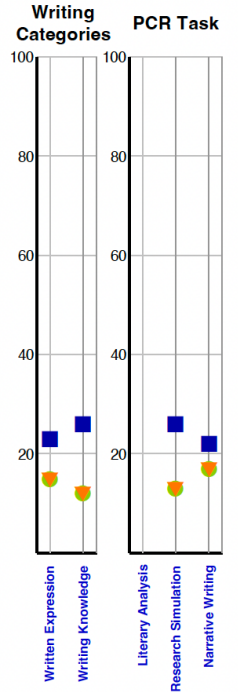
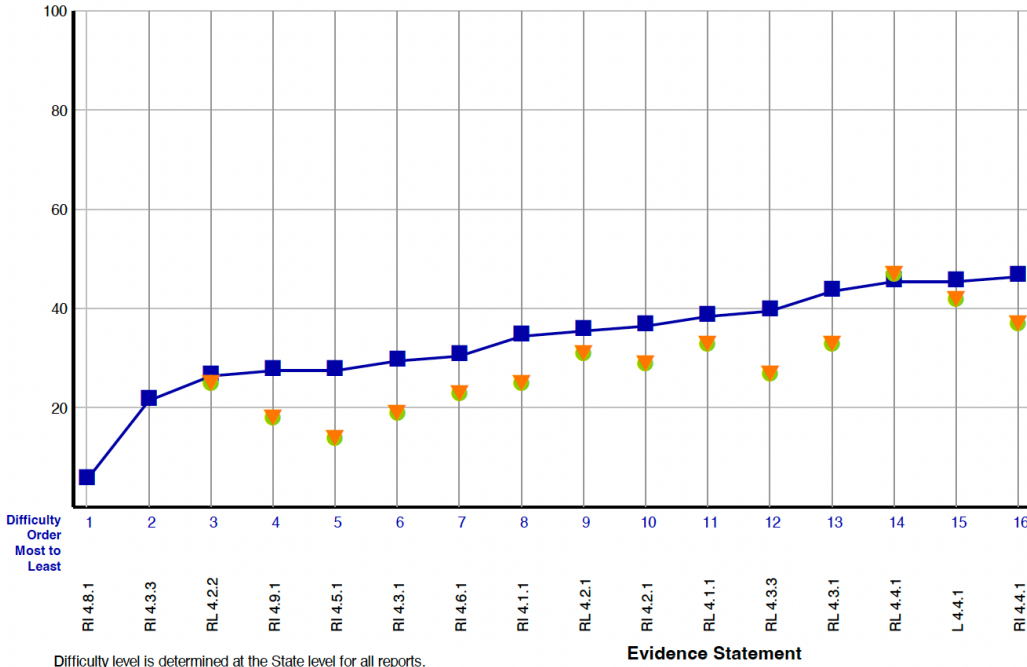
4th Grade ELA

ENGLISH LANGUAGE ARTS / LITERACY
Grade 4 Assessment, 2023–2024

- State
- District
- ▼ School

Students with Valid Scores (61)

Purpose: This report presents the average percent correct by Evidence Statement for school, district and state.



Difficulty level is determined at the State level for all reports.
Evidence Statements not tested in district or school are left blank.

This report is NOT for public review. Distribution within your school/district must be in accordance with state and federal privacy laws, and local school board policy.

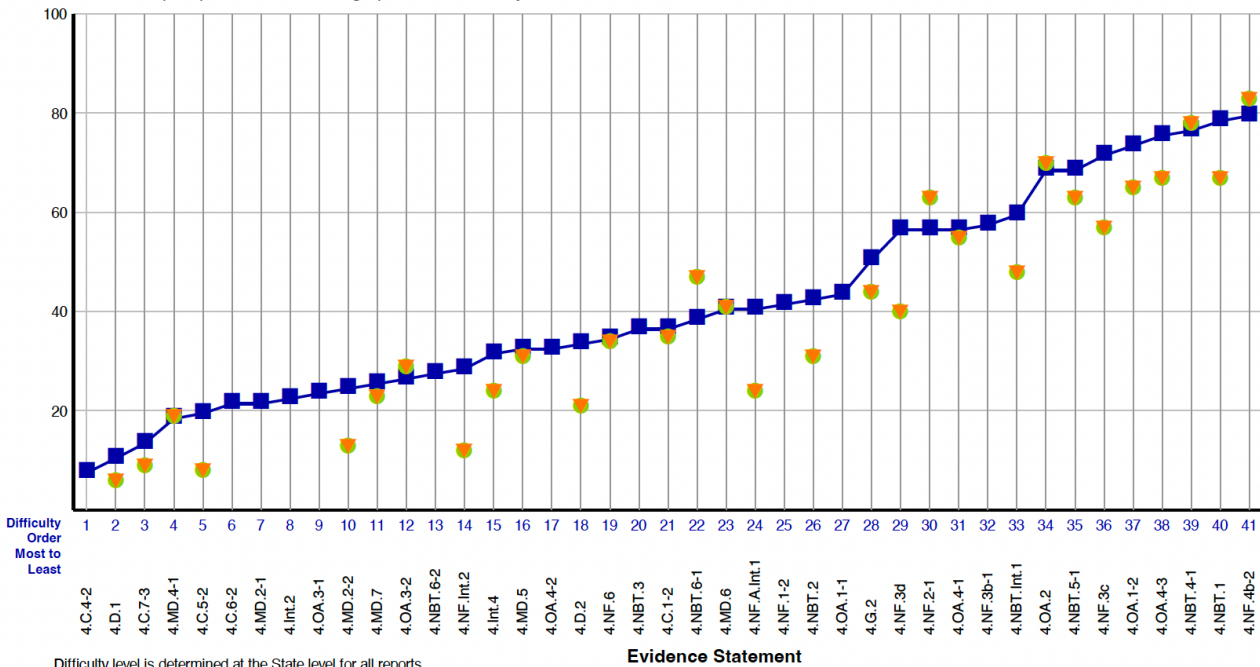
4th Grade Math

MATHEMATICS
Grade 4 Assessment, 2023–2024

- State
- District
- ▼ School

Students with Valid Scores (61)

Purpose: This report presents the average percent correct by Evidence Statement for school, district and state.



Difficulty level is determined at the State level for all reports.
Evidence Statements not tested in district or school are left blank.

This report is NOT for public review. Distribution within your school/district must be in accordance with state and federal privacy laws, and local school board policy.

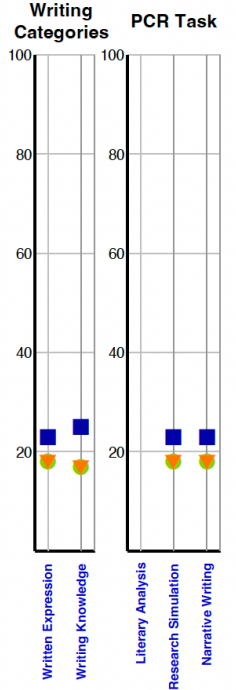
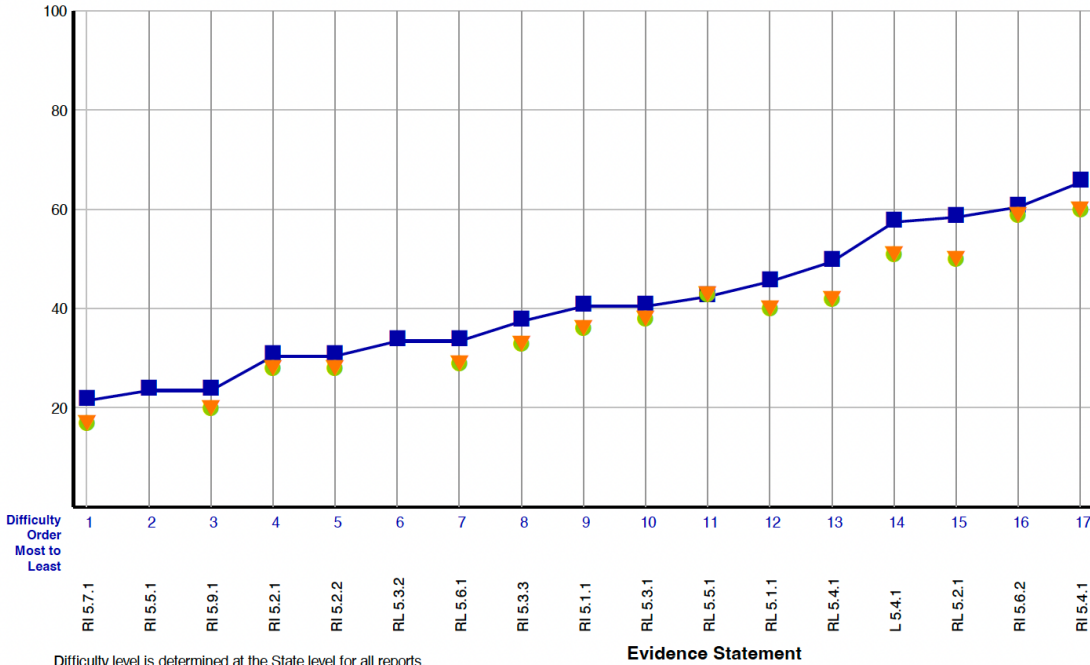
5th Grade ELA

ENGLISH LANGUAGE ARTS / LITERACY
Grade 5 Assessment, 2023–2024

- State
- District
- ▼ School

Students with Valid Scores (60)

Purpose: This report presents the average percent correct by Evidence Statement for school, district and state.



Difficulty level is determined at the State level for all reports.
Evidence Statements not tested in district or school are left blank.

This report is NOT for public review. Distribution within your school/district must be in accordance with state and federal privacy laws, and local school board policy.

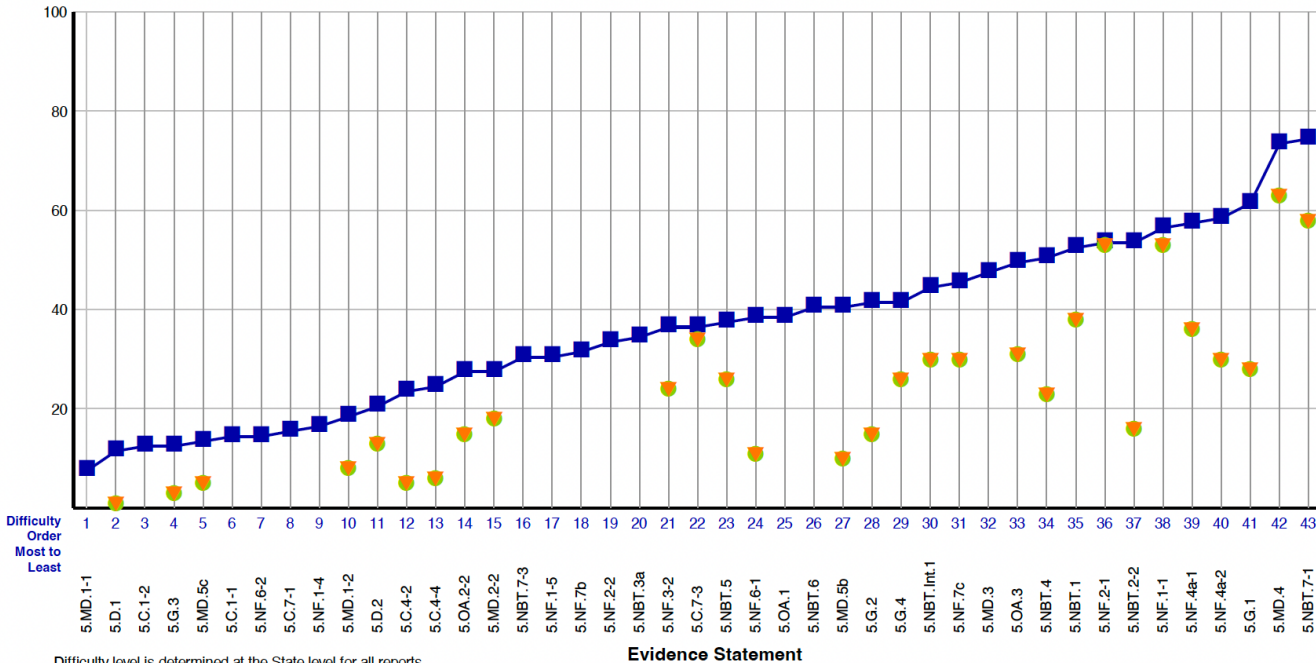
5th Grade Math

MATHEMATICS
Grade 5 Assessment, 2023–2024

- State
- District
- ▼ School

Students with Valid Scores (60)

Purpose: This report presents the average percent correct by Evidence Statement for school, district and state.



Difficulty level is determined at the State level for all reports.
Evidence Statements not tested in district or school are left blank.

This report is NOT for public review. Distribution within your school/district must be in accordance with state and federal privacy laws, and local school board policy.

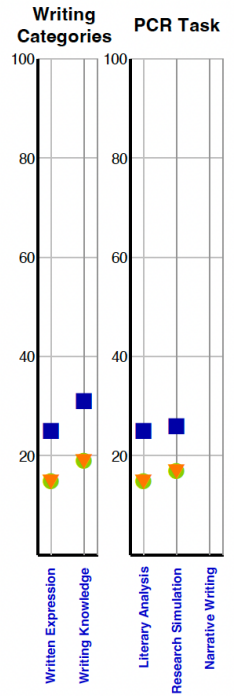
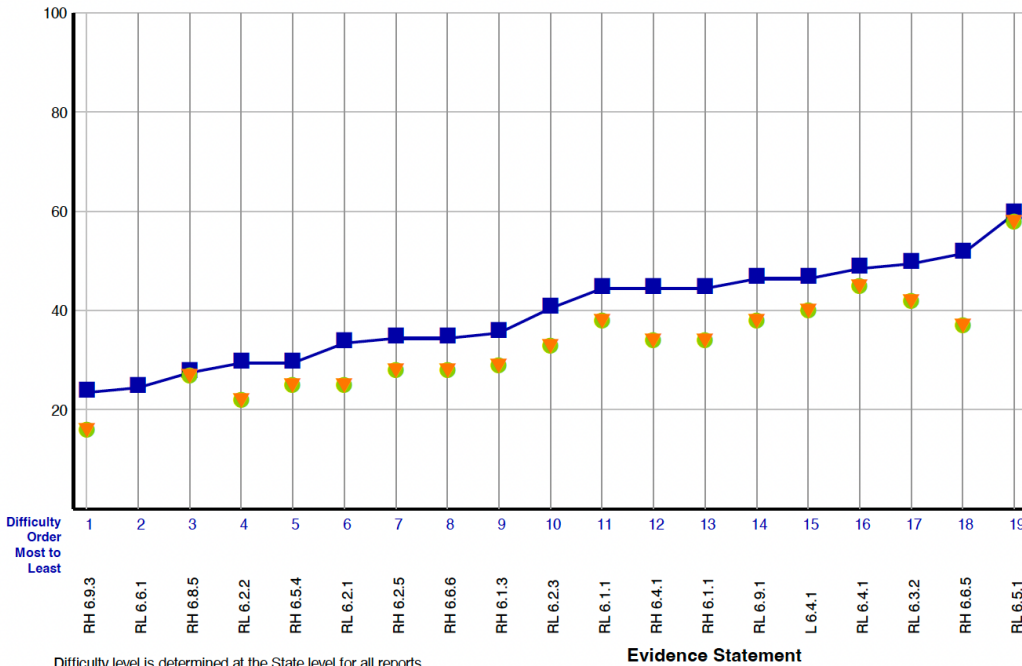
6th Grade ELA

ENGLISH LANGUAGE ARTS / LITERACY
Grade 6 Assessment, 2023–2024

- State
- District
- ▼ School

Students with Valid Scores (53)

Purpose: This report presents the average percent correct by Evidence Statement for school, district and state.



Difficulty level is determined at the State level for all reports.
Evidence Statements not tested in district or school are left blank.

This report is NOT for public review. Distribution within your school/district must be in accordance with state and federal privacy laws, and local school board policy.

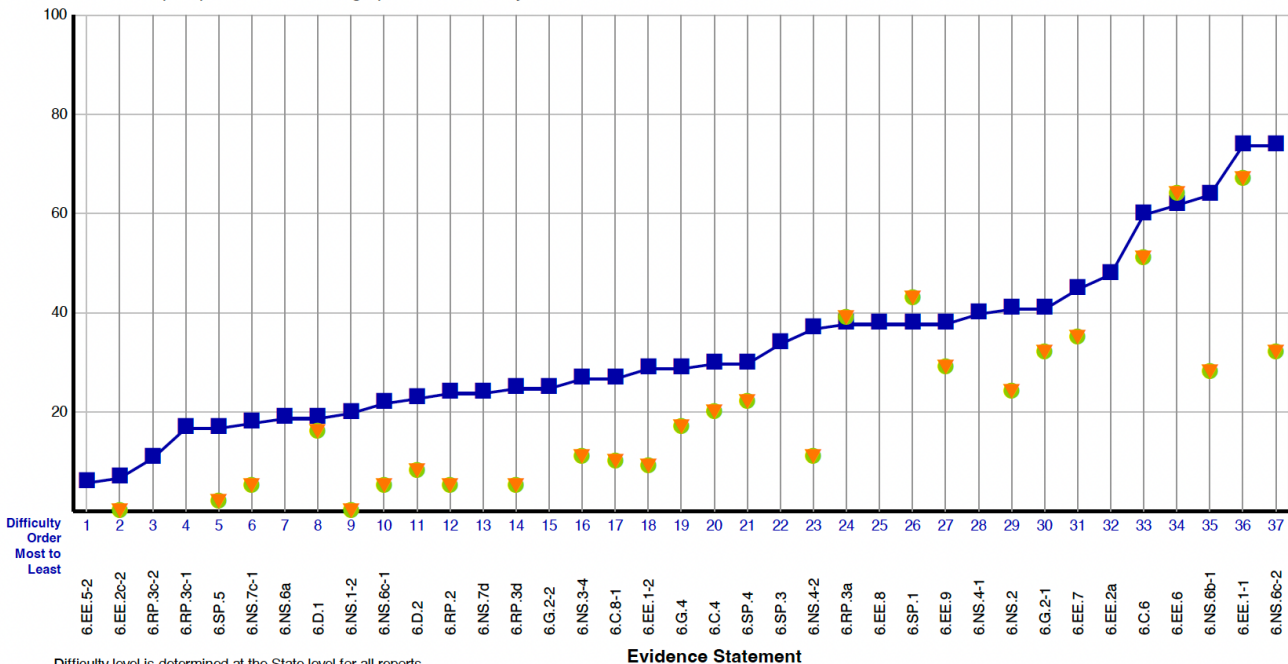
6th Grade Math

MATHEMATICS
Grade 6 Assessment, 2023–2024

- State
- District
- ▼ School

Students with Valid Scores (53)

Purpose: This report presents the average percent correct by Evidence Statement for school, district and state.



Difficulty level is determined at the State level for all reports.
Evidence Statements not tested in district or school are left blank.

This report is NOT for public review. Distribution within your school/district must be in accordance with state and federal privacy laws, and local school board policy.

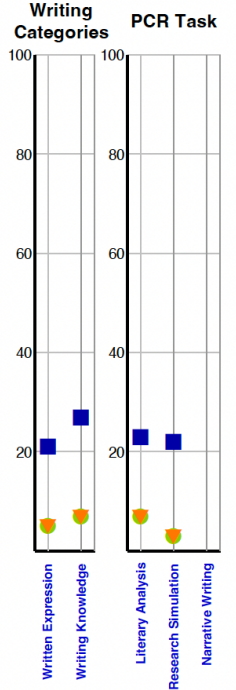
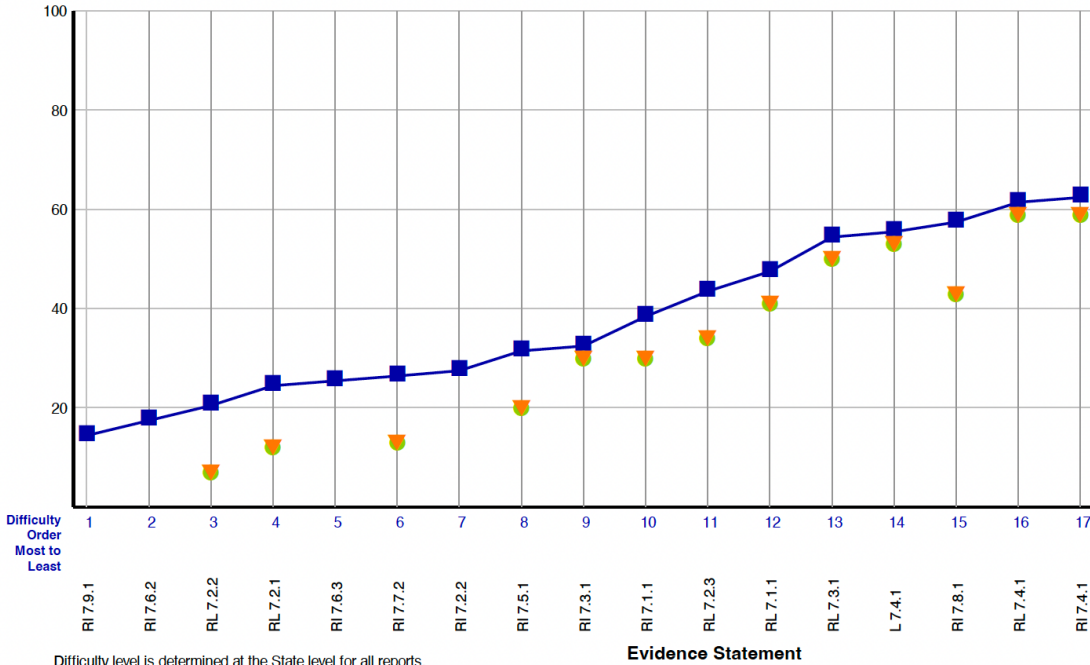
7th Grade ELA

ENGLISH LANGUAGE ARTS / LITERACY
Grade 7 Assessment, 2023–2024

- State
- District
- ▼ School

Students with Valid Scores (65)

Purpose: This report presents the average percent correct by Evidence Statement for school, district and state.



Difficulty level is determined at the State level for all reports.
Evidence Statements not tested in district or school are left blank.

This report is NOT for public review. Distribution within your school/district must be in accordance with state and federal privacy laws, and local school board policy.

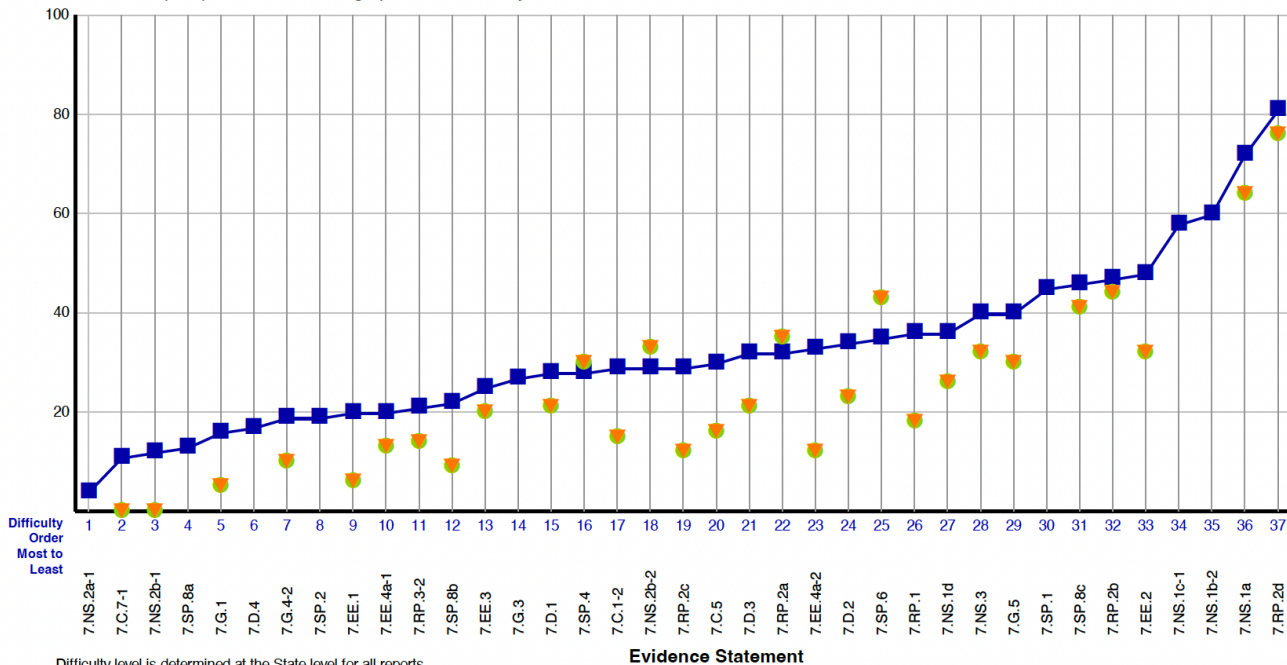
7th Grade Math

MATHEMATICS
Grade 7 Assessment, 2023–2024

- State
- District
- ▼ School

Students with Valid Scores (65)

Purpose: This report presents the average percent correct by Evidence Statement for school, district and state.



Difficulty level is determined at the State level for all reports.
Evidence Statements not tested in district or school are left blank.

This report is NOT for public review. Distribution within your school/district must be in accordance with state and federal privacy laws, and local school board policy.

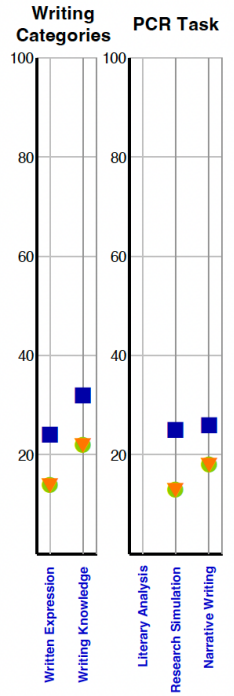
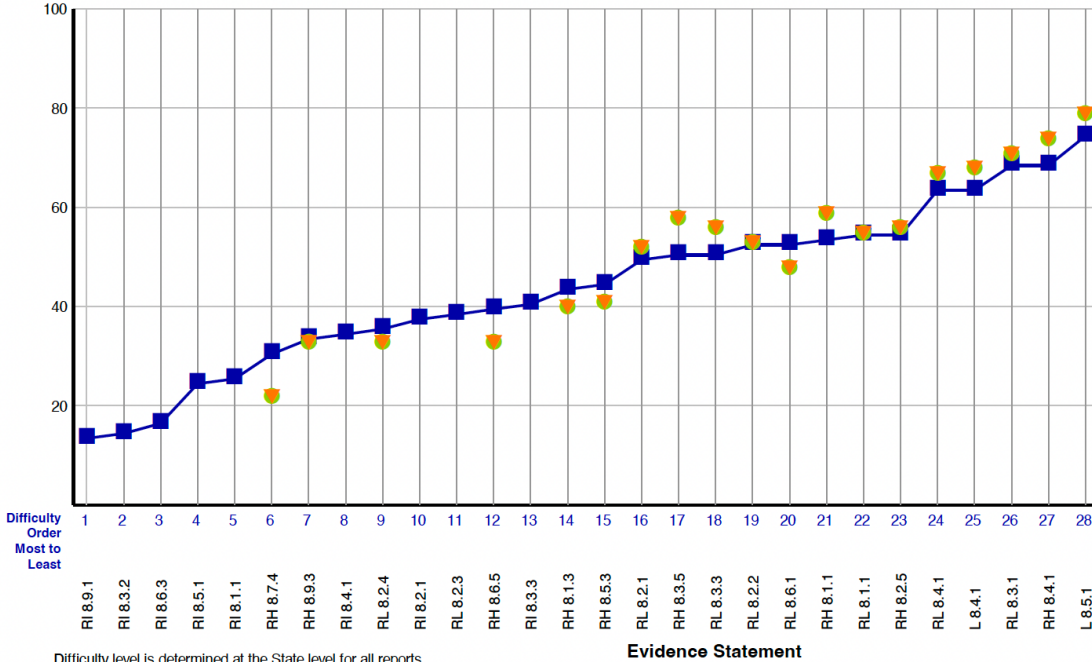
8th Grade ELA

ENGLISH LANGUAGE ARTS / LITERACY
Grade 8 Assessment, 2023–2024

- State
- District
- ▼ School

Students with Valid Scores (55)

Purpose: This report presents the average percent correct by Evidence Statement for school, district and state.



Difficulty level is determined at the State level for all reports.
Evidence Statements not tested in district or school are left blank.

This report is NOT for public review. Distribution within your school/district must be in accordance with state and federal privacy laws, and local school board policy.

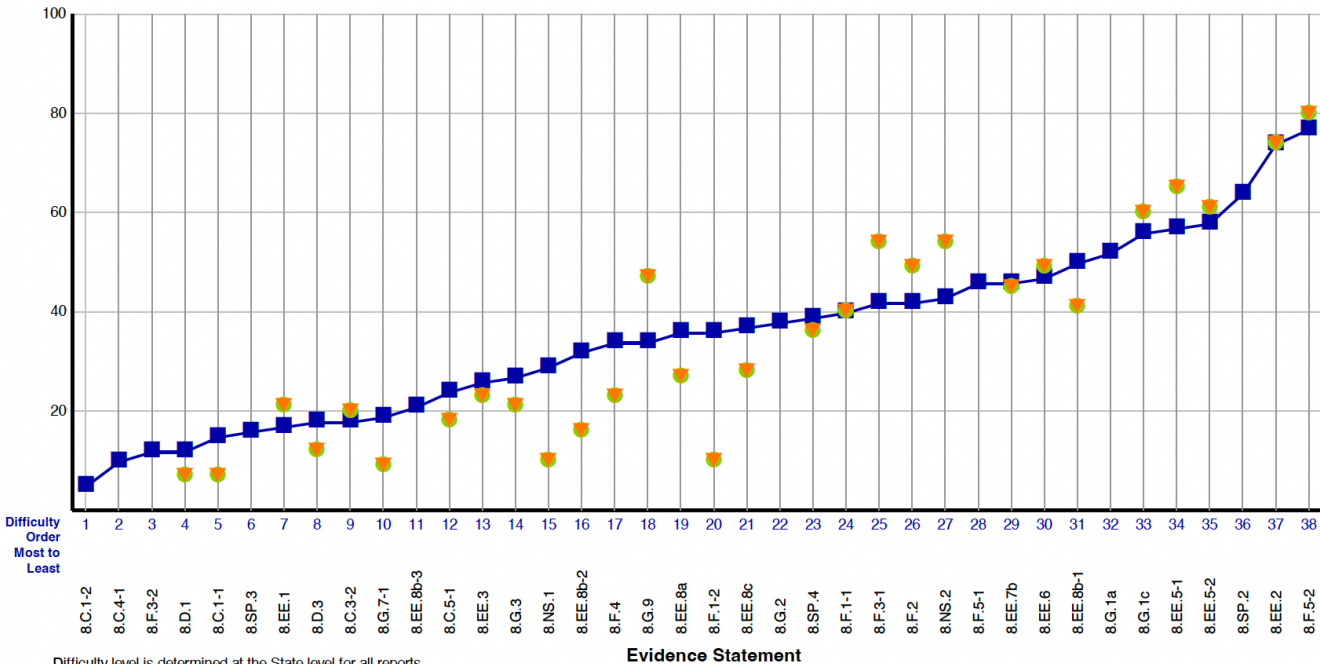
8th Grade Math

MATHEMATICS
Grade 8 Assessment, 2023–2024

- State
- District
- ▼ School

Students with Valid Scores (55)

Purpose: This report presents the average percent correct by Evidence Statement for school, district and state.



Difficulty level is determined at the State level for all reports.
Evidence Statements not tested in district or school are left blank.

This report is NOT for public review. Distribution within your school/district must be in accordance with state and federal privacy laws, and local school board policy.