



Oak Park Elementary School District 97



Julian Middle School
Home of the Jayhawks



Site Improvements

Site Context:

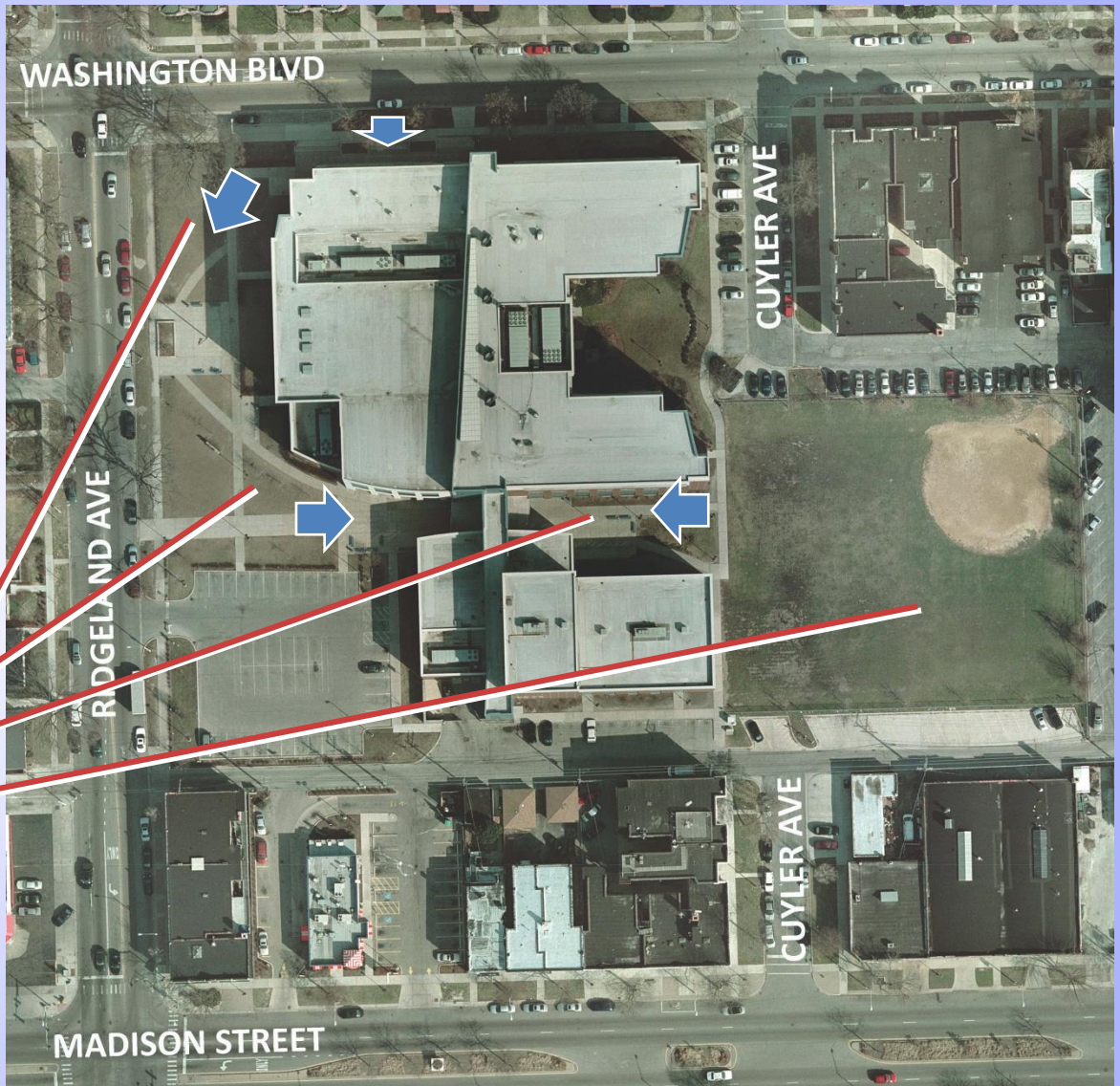
RESIDENTIAL /
BUSINESS
NEIGHBORHOOD



Site Context: CONDITIONS

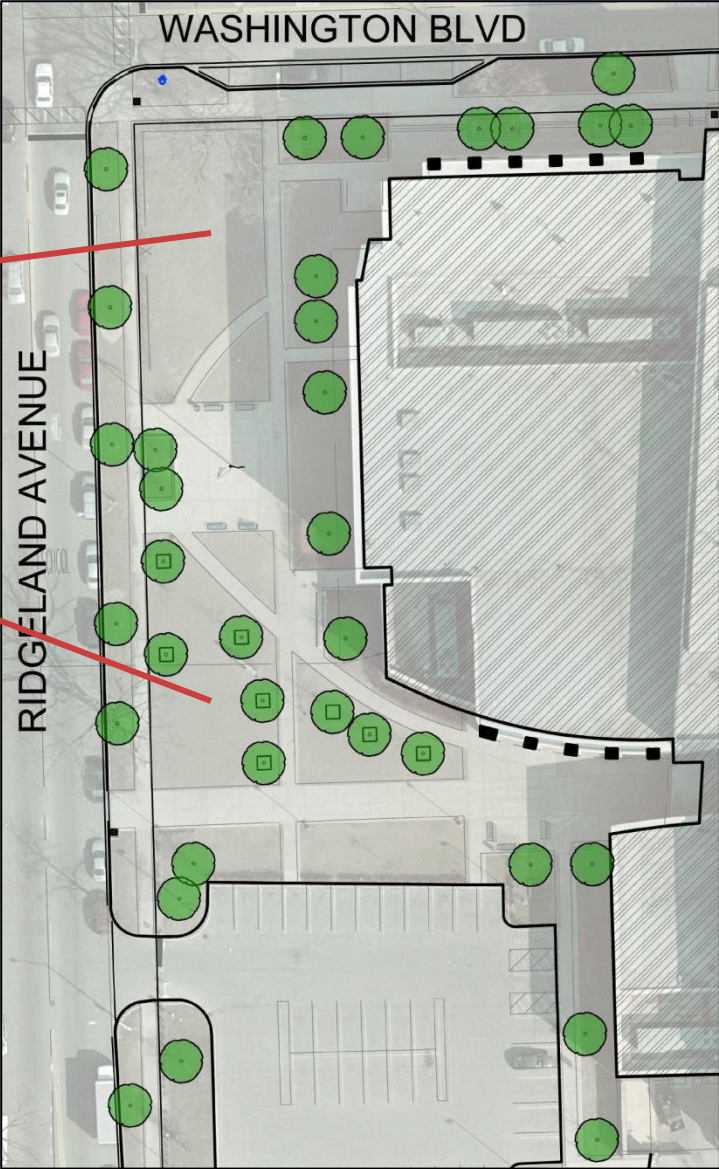
- Lawn
- Paved Entry Area
- East Entry
- Athletic Field

↑ Entry Points / Circulation



Site Context:

- Diminished Lawn
High Traffic Area
- Successful Paving Project



Site Context:

CONDITIONS

- **Poor Lawn Conditions**
- **Desire Lines**
- **Underutilized Planter**



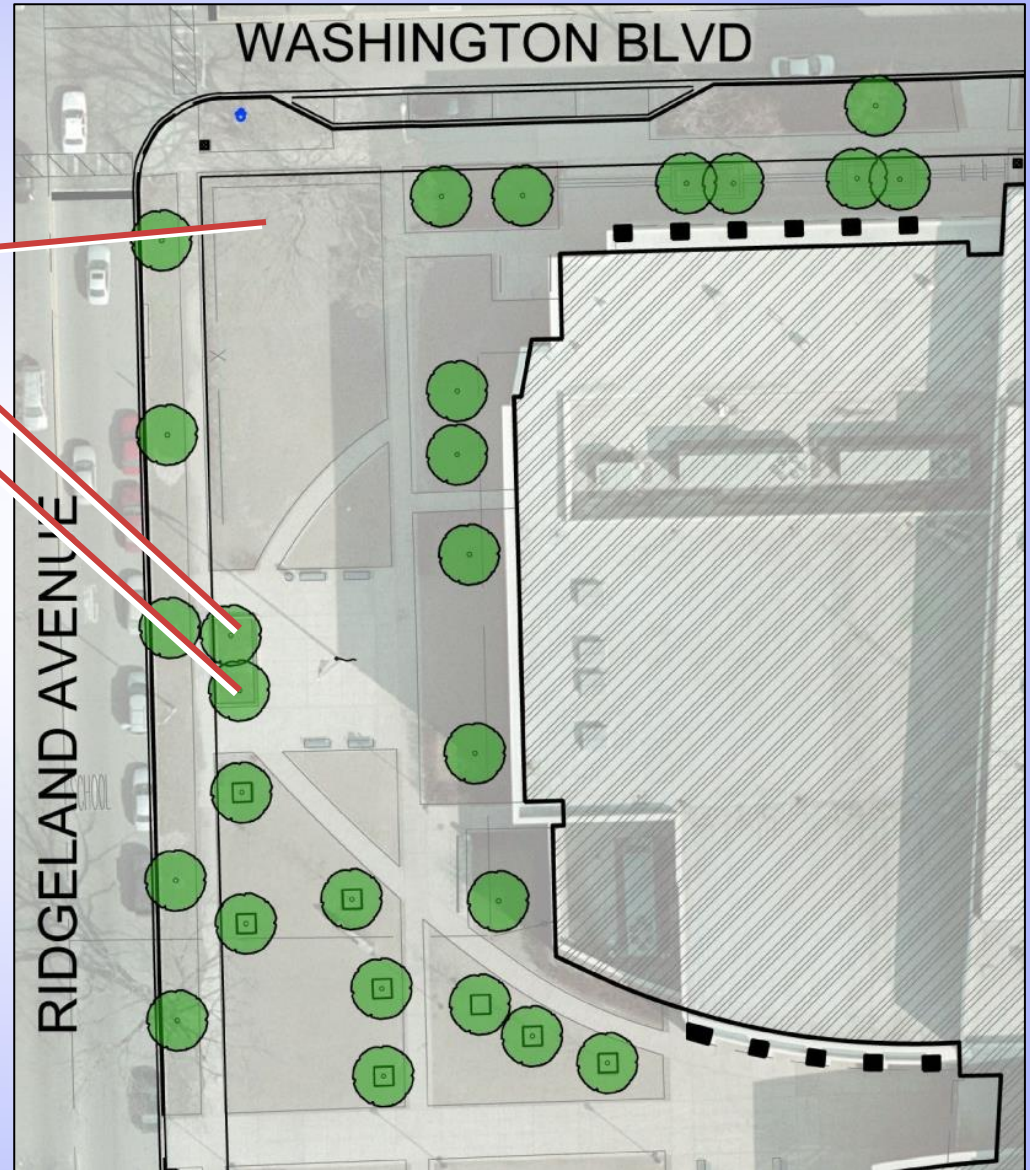
Raised concrete planter acts as an obstacle in the student circulation.



Existing concrete path at East edge of existing turf field.

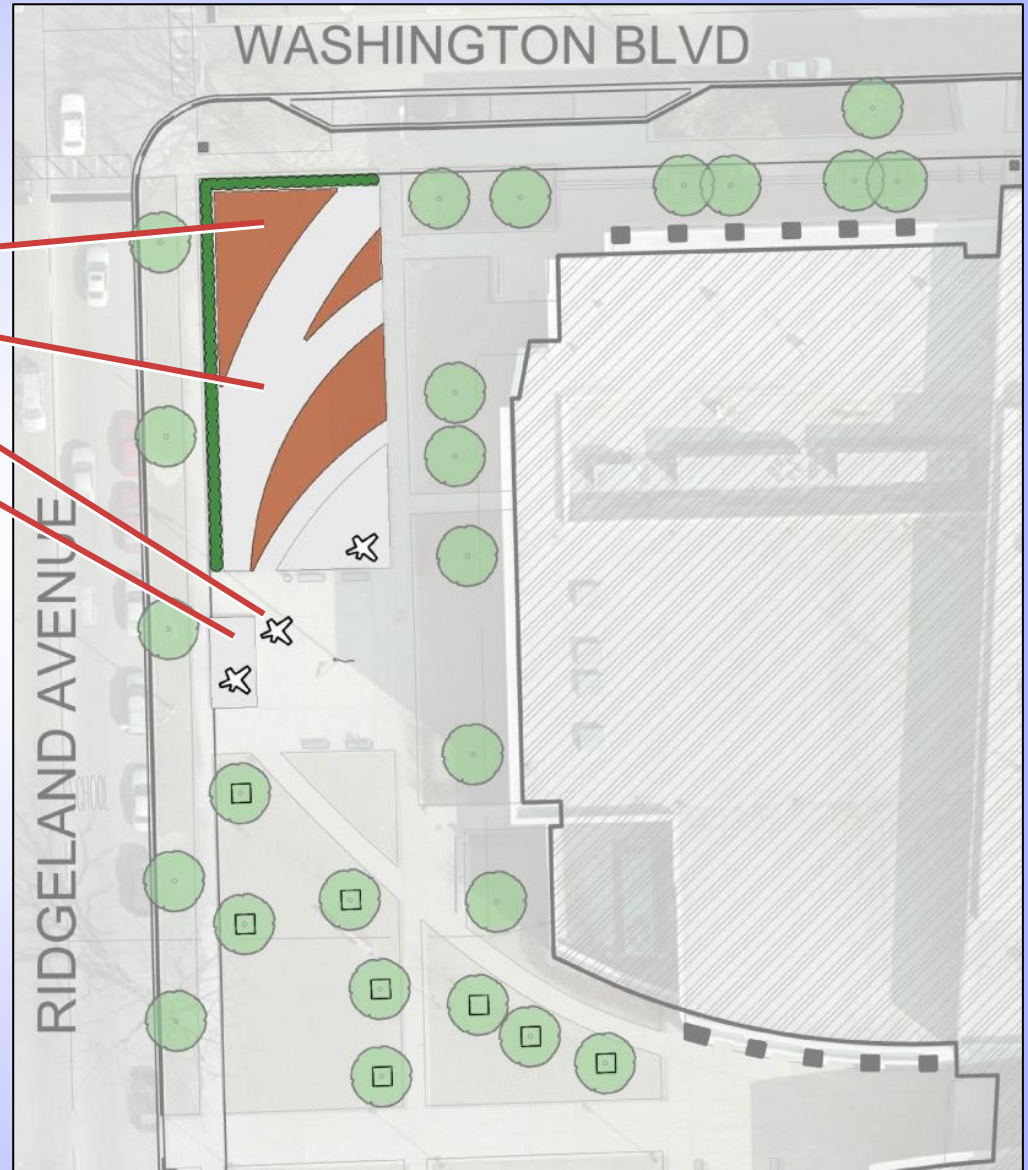
Existing Site:

- Eroded Lawn Area
- Raised Planter
- Ornamental Trees



Proposed Site:

- Concrete Pavers
- Widened Sidewalk
- Seating
- Trees / Planter Removed



Site Amenities:

- Added Gathering Space
- Connected Entries
- Added Seating
- Wider/ Paved Desired Routes



Site Amenities:

- Concrete Paver Surface



Site Amenities:

- Flor Star Bench
Size : 106" x 97"
Material : Precast Concrete
Color options -



Irving Elementary



