

Duluth Public Schools

Graduation Rates Over Time



Changes to Calculations

- Changes to graduation rate calculations
 - Beginning class of 2013
 - Recalculated from 2003-2012
 - Removes care/treatment/correctional facilities from district rates

Changes to Calculations

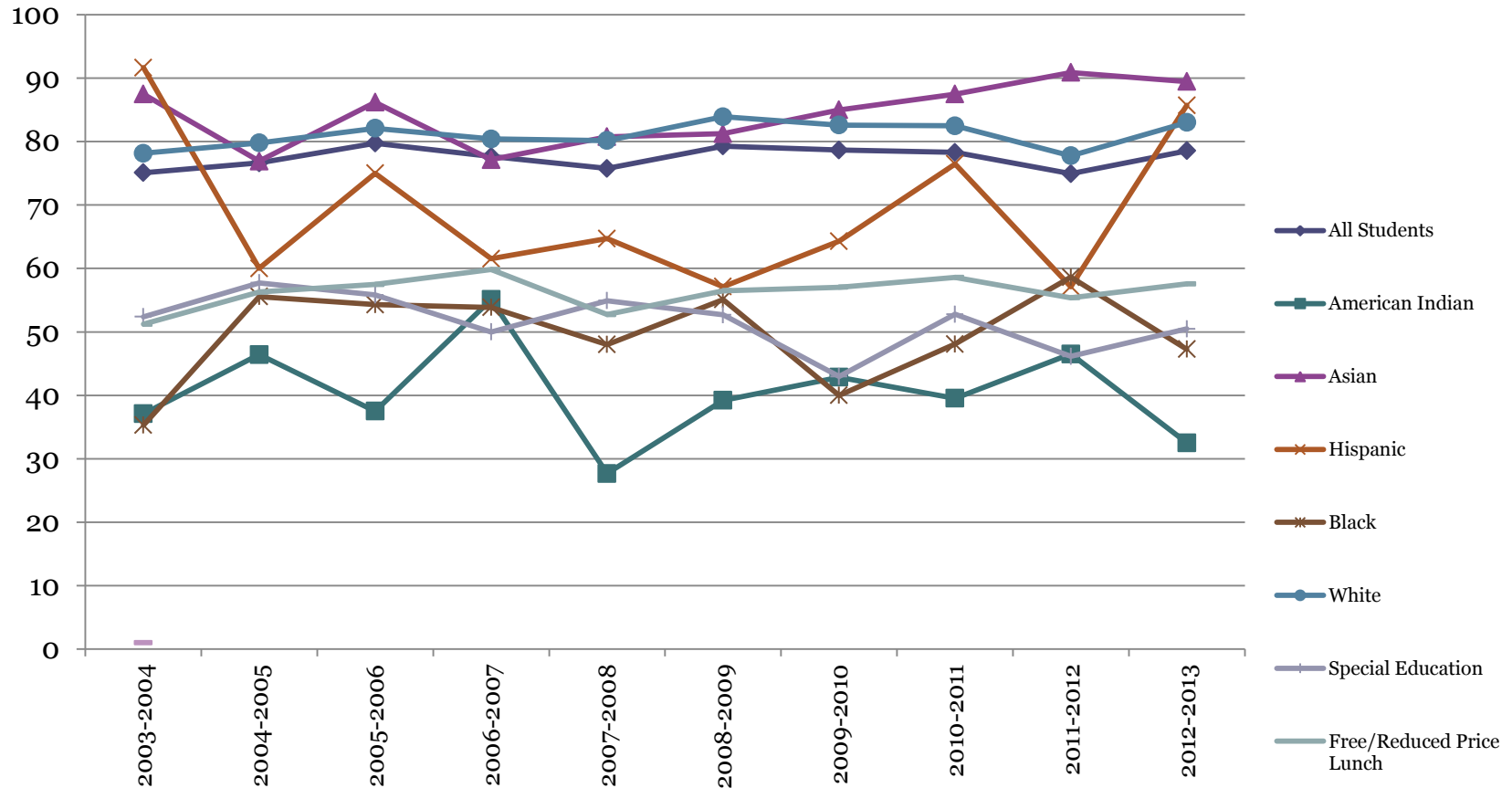
- Definition
 - The Four-Year Graduation Rate is a four-year, on-time graduation rate based on a cohort of first time ninth grade students plus transfers into the cohort within the four year period minus transfers out of the cohort within the four year period
 - 10 or more students needed in a cohort for reporting
 - Similar to, but not the same as, the NGA Grad Rate

Four Year On-Time Graduation Rates Over Time, District

	2003-2004	2004-2005	2005-2006	2006-2007	2007-2008	2008-2009	2009-2010	2010-2011	2011-2012	2012-2013
All Students	75.09	76.65	79.76	77.56	75.76	79.3	78.66	78.3	74.94	78.55
American Indian	37.1	46.43	37.5	55.1	27.66	39.22	42.86	39.53	46.51	32.5
Asian	87.5	76.92	86.21	77.14	80.77	81.25	85.0	87.5	90.91	89.47
Hispanic	91.67	60.0	75.0	61.54	64.71	57.14	64.29	76.47	57.14	85.71
Black	35.29	55.56	54.29	53.85	48.0	55.1	40.0	48.08	58.62	47.27
White	78.17	79.8	82.1	80.43	80.17	83.93	82.61	82.5	77.78	83.03
Special Education	52.38	57.74	55.81	50.0	54.92	52.69	42.97	52.78	46.15	50.48
Free/Reduced Lunch	51.2	56.27	57.48	59.83	52.72	56.48	57.05	58.59	55.38	57.56

Note: MDE made an adjustment to graduation rate calculations in January 2012, and again in January 2013. All previous graduation rates were recalculated to reflect the most recent adjustment.

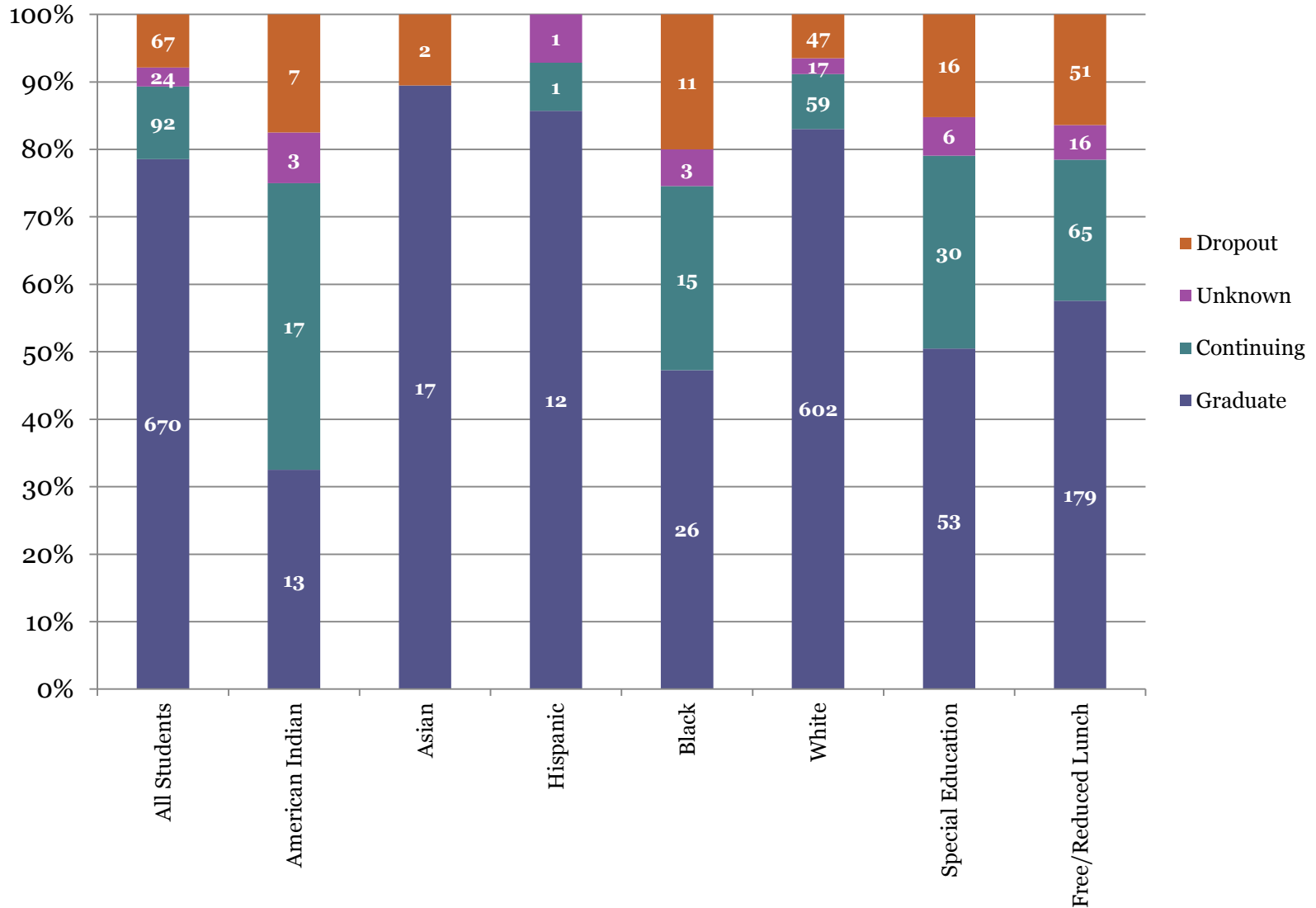
Four Year On-Time Graduation Rates Over Time, District



Note: MDE made an adjustment to graduation rate calculations in January 2012, and again in January 2013. All previous graduation rates were recalculated to reflect the most recent adjustment.

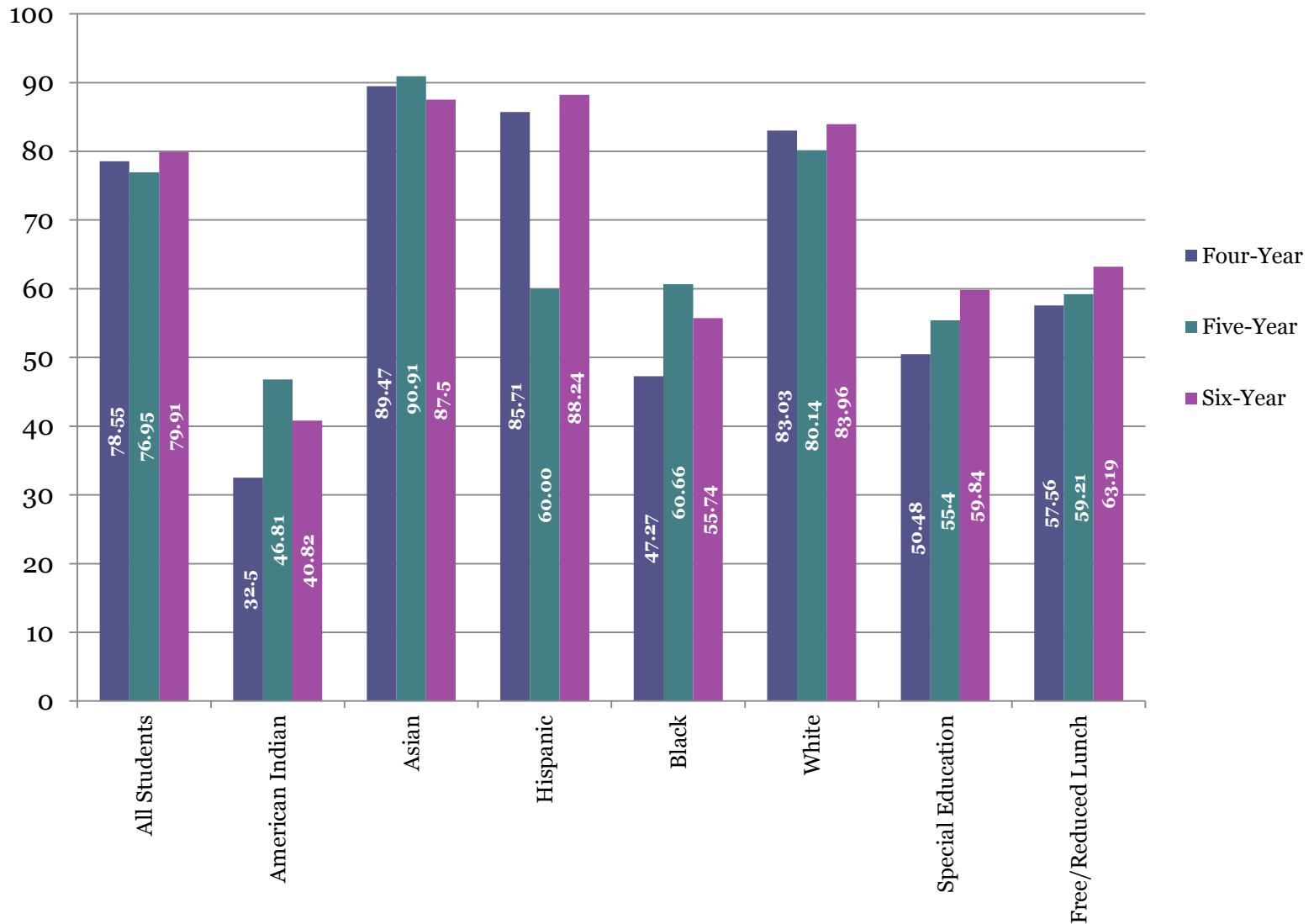
2012-2013

Number and Percent of Students By End Status, District



2012-2013

Four-, Five-, and Six-Year Graduation Rates, District



Next Steps

- Re-align annual goals to reflect current graduation rate calculations
 - District-Wide Continuous Improvement Plan
 - School Improvement Plans
- Review data to inform action steps

Questions

Tawnyea Lake, PhD

Director of Assessment, Evaluation, and Performance

tawnyea.bolme-lake@duluth.k12.mn.us

218.336-8700 x1039

Reference

<http://w20.education.state.mn.us/MDEAnalytics/Data.jsp>

Appendix: Four Year On-Time Graduation Rates Over Time, By School

		2008-2009	2009-2010	2010-2011	2011-2012	2012-2013
All Students	Denfeld	76.21	85.53	88.58	83.74	84.59
	East	91.59	91.67	92.31	89.89	91.94
	ALC	10.61	13.08	12.07	24.67	19.83
American Indian	Denfeld	64.71		65.22	66.67	64.29
	East				72.73	
	ALC	6.67		5.56	14.29	5.0
Asian	Denfeld			90.0		
	East				100	100
	ALC					
Hispanic	Denfeld					
	East					
	ALC	8.33				
Black	Denfeld	54.55		76.0	63.16	70.0
	East				85.71	76.92
	ALC	8.33			25.0	9.52
White	Denfeld	79.82	86.05	91.18	85.97	86.77
	East	92.86	92.03	92.18	90.55	92.56
	ALC	13.51	19.18	14.67	26.09	24.0
Special Education	Denfeld	56.25	57.14	65.52	52.83	56.67
	East	50.0	76.19	62.96	69.7	64.29
	ALC	21.43	12.5	9.09	20.51	5.88
Free/Reduced Price Lunch	Denfeld	58.12	78.64	78.31	69.78	74.22
	East	70.73	85.0	85.71	81.69	79.55
	ALC	6.98	9.76	10.0	20.2	15.22

Note: MDE made an adjustment to graduation rate calculations in January 2012, and again in January 2013.

All previous graduation rates were recalculated to reflect the most recent adjustment.