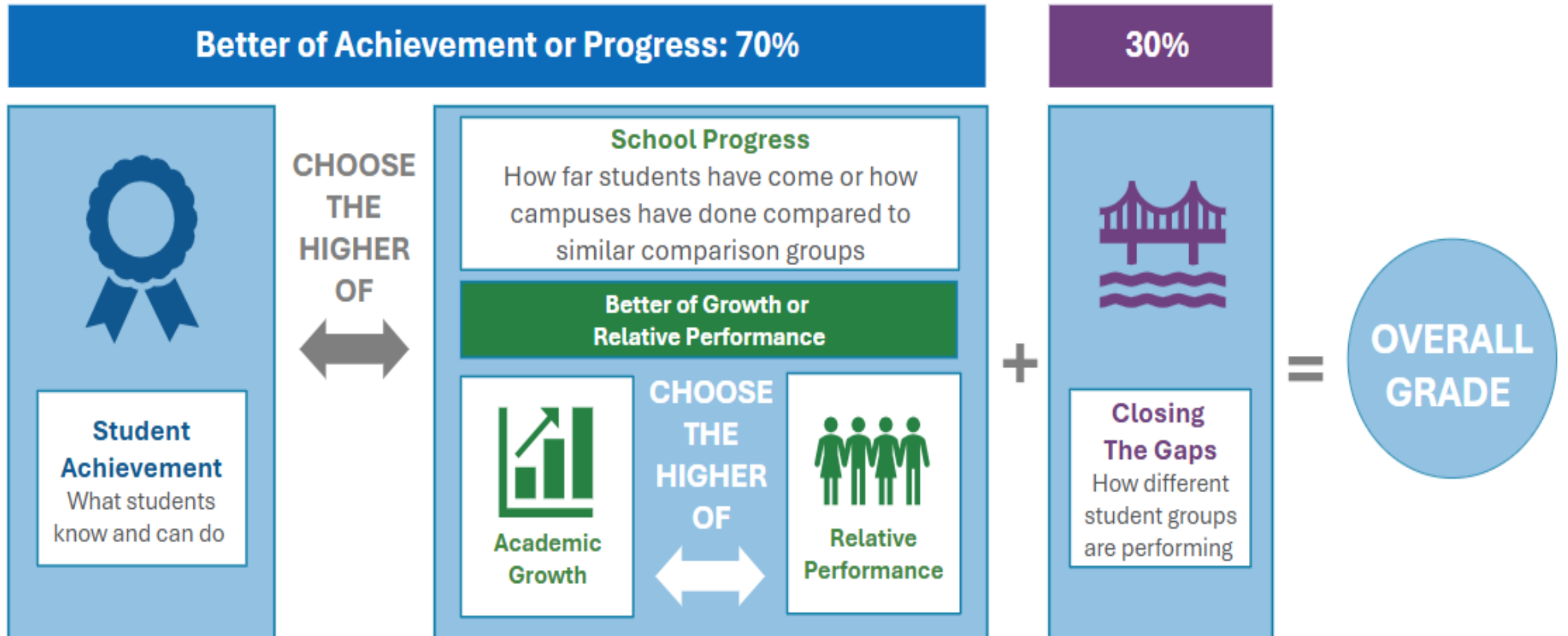




2024 & 2025 Preliminary A-F Accountability Ratings

Presented by Beatriz Hernandez, Chief Academic Officer,
September 2, 2025

Calculating Overall A-F Results



Overall BISD Accountability for 2024 and 2025



2024 Accountability Rating Overall Summary BROWNSVILLE ISD (031901) - CAMERON COUNTY

[2019](#) | [2020](#) | [2021](#) | [2022](#) | [2023](#) | **2024** | [2025](#)

Summary

	Scaled Score	Rating	Proportion of Overall Rating
Overall	87	B	
Student Achievement	81	B	0%
School Progress	87	B	70%
Academic Growth	76	C	
Relative Performance (Eco Dis: 89.5%)	87	B	
Closing the Gaps	86	B	30%

2025 Accountability Rating Overall Summary BROWNSVILLE ISD (031901) - CAMERON COUNTY

[2019](#) | [2020](#) | [2021](#) | [2022](#) | [2023](#) | [2024](#) | **2025**

Summary

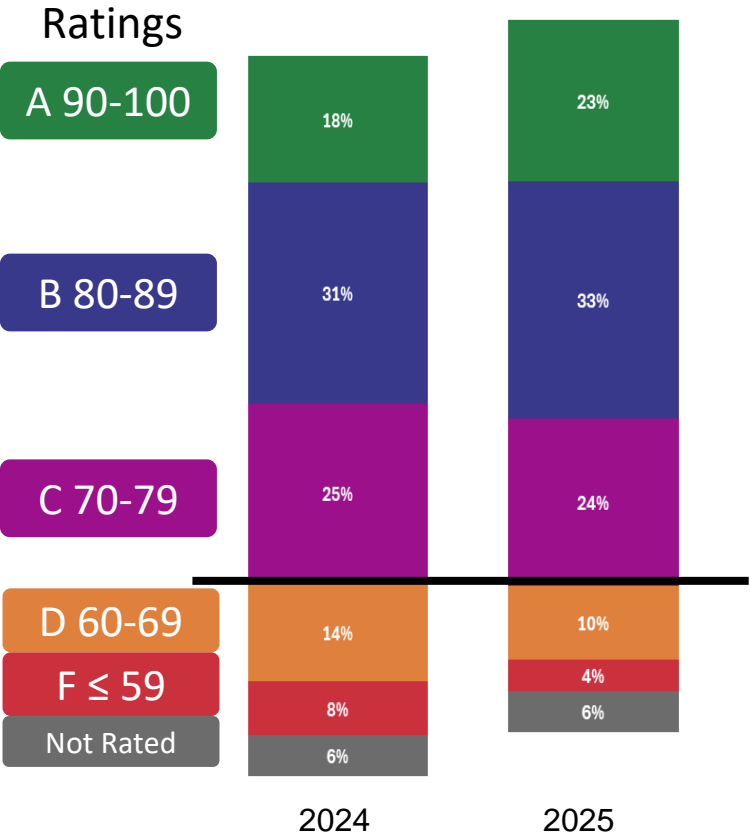
	Scaled Score	Rating	Proportion of Overall Rating
Overall	87	B	
Student Achievement	81	B	0%
School Progress	87	B	70%
Academic Growth	76	C	
Relative Performance (Eco Dis: 89.3%)	87	B	
Closing the Gaps	88	B	30%



Overall Campus Ratings Results: 2024 to 2025 Comparison



Across Texas Campuses: 2024 vs 2025 Ratings



31% campuses increased in ratings from the prior year.

Our Campuses: 2024 to 2025 Ratings

2024	2025
12	19
31	25
7	3
0	1
1	0

56% campuses increased in ratings from the prior year.

92% campuses rated an A or B for 2025.

NOTE: In 2024 BISD had 51 Campuses but in 2025 only had 48.

District STAAR Results for Grades 3-5 for 2024 and 2025 compared to Texas and Region One



		Approaches or Above			Meets or Above			Masters		
		State	Region	BISD	State	Region	BISD	State	Region	BISD
Reading Language Arts 3-5	2024	76%	77%	78%	49%	51%	52%	23%	25%	24%
	2025	77%	77%	78%	53%	53%	54%	25%	26%	24%
Mathematics 3-5	2024	70%	71%	78%	44%	43%	50%	18%	16%	19%
	2025	70%	71%	77%	45%	45%	53%	21%	20%	25%
Science 5	2024	56%	59%	55%	26%	26%	22%	10%	10%	7%
	2025	64%	68%	73%	30%	32%	34%	12%	13%	14%

District STAAR Results for Grades 6-8 for 2024 and 2025 compared to Texas and Region One



		Approaches or Above			Meets or Above			Masters		
		State	Region	BISD	State	Region	BISD	State	Region	BISD
Reading Language Arts 6-8	2024	75%	74%	74%	54%	51%	52%	27%	24%	23%
	2025	76%	75%	73%	54%	53%	50%	28%	26%	24%
Mathematics 6-8	2024	64%	66%	65%	36%	38%	33%	13%	11%	9%
	2025	65%	66%	64%	38%	38%	35%	15%	13%	11%
Science 8	2024	68%	65%	61%	42%	38%	28%	16%	13%	5%
	2025	72%	71%	65%	46%	46%	34%	18%	16%	7%
Social Studies 8	2024	58%	55%	57%	31%	27%	26%	16%	13%	10%
	2025	55%	54%	57%	30%	26%	26%	16%	12%	11%

District EOC Results for 2024 and 2025 compared to Texas and Region One



		Approaches or Above			Meets or Above			Masters		
		State	Region	BISD	State	Region	BISD	State	Region	BISD
English I EOC	2024	70%	69%	70%	52%	50%	53%	16%	13%	16%
	2025	66%	62%	68%	51%	47%	51%	16%	13%	17%
English II EOC	2024	75%	74%	77%	58%	56%	62%	9%	7%	9%
	2025	71%	67%	71%	56%	52%	55%	8%	6%	8%
Algebra I EOC	2024	81%	84%	89%	43%	46%	59%	24%	24%	32%
	2025	76%	78%	88%	47%	49%	64%	29%	30%	39%
Biology EOC	2024	90%	90%	90%	56%	49%	49%	19%	12%	11%
	2025	91%	88%	89%	62%	55%	55%	21%	14%	13%
US History EOC	2024	96%	95%	96%	69%	64%	69%	37%	28%	32%
	2025	94%	93%	95%	68%	62%	67%	37%	29%	34%



2024 and 2025 TELPAS EL Proficiency Rates



District Level	2024 49%	2025 52%
Elementary	52%	57%
Middle School	47%	48%
High School	43%	48%

Met the Interim Target:
 94% of Elementary
 70% of Middle Schools
 100% of High Schools

<i>ELP Targets for Domain 3 Closing the Gaps</i>			
	<i>Elementary</i>	<i>Middle School</i>	<i>High School</i>
<i>Interim Target thru 26-27</i>	49%	44%	34%

Data Sources
 TPRS Data and Bilingual Department
 Information

BISD Notable Improvements



- **District science scores improved**
- **Accountability Domain III: Improved from 86% to 88%**
- **Increased from 12 campuses rated “A” in 2024 to 19 campuses rated “A” in 2025**
- **In 2025, 44 out of 48 campuses met their TELPAS performance targets**

BISD Areas for Focus



- **Priority Campuses and Focus Schools support initiatives:**
 - **Strengthen tier one instruction**
 - **Data-review and accountability support visits and training**
 - **Staffing support**
 - **Building capacity**
- **High school College, Career, and Military Readiness (CCMR):**
 - **Comprehensive approach to meet targets**
 - **Adjusting district systems impacting the overall rating due to the state's continuous adjustment in the CCMR accountability component.**

BISD Action Steps



- **District leadership and support staff will maintain on-going campus support visits, providing hands-on coaching, and monitoring to ensure progress**
- **Regular data analysis sessions with principals and campus teams will continue, allowing us to identify strengths, address gaps, and respond with timely interventions.**
- **Continue to build capacity at the district and campus level**
- **Focus on early literacy**
- **Instructional and leadership capacity building from external resources**



Thank You