

# UNITED ISD

# *Skyward Bound*

## SOARING TO NEW HEIGHTS OF LEARNING

**Special Education**  
**February 04, 2025**





# Sensory Rooms and Walls

February 2025





# Sp. Ed. Sensory Rooms in Public Schools

- Regulation and Calming
- Improved Focus and Attention
- Development of Skills
- Positive Behavioral Outcomes
- Individualized Support

By incorporating sensory rooms into special education programs, schools can create more supportive and inclusive environments that empower students to **learn, grow, and thrive.**

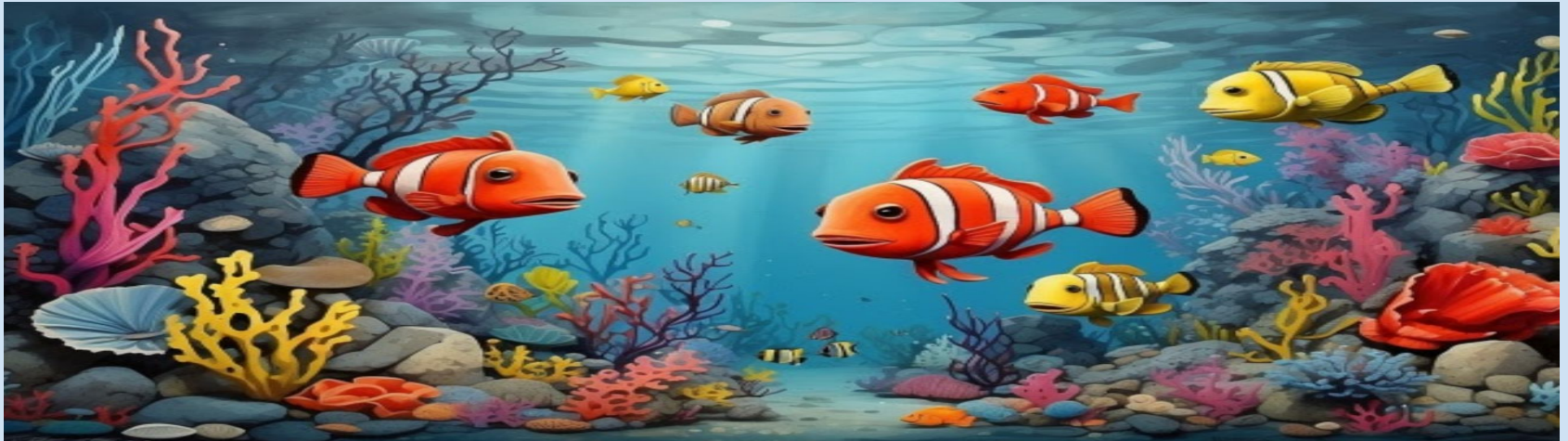
# Cherish Center 8/9/2024





## In Process: Clark Elementary School

- Ocean Theme
  - Ordered in December 2024
- Order is in process and getting ready to begin installation in February 2025



**Note: Sensory room completion takes approximately 3 to 4 months from PO being received by the vendor if lead times are normal.**

## In Process: Ramirez Middle School

- Galaxy Theme
  - Ordered in October 2024
- Installation is in progress - 20% completed



**Note: Sensory room completion takes approximately 3 to 4 months from PO being received by the vendor if lead times are normal.**

# Sensory Wall Sample



## Sp. Ed. Sensory Rooms Contingent on Space Availability

- Phase I
  - UHS
  - RMMS
  - RSKE
- Phase II
  - USHS
  - LBV
  - FINL
- Phase III
  - LBJ
  - PES
  - KZN
- Phase IIII
  - AHS
  - VMES

Note: If campus has a room available,  
average cost for a basic sensory room: \$34,000 - \$36,000



# Thank You

