

ENROLLMENT PROJECTION 2016-17

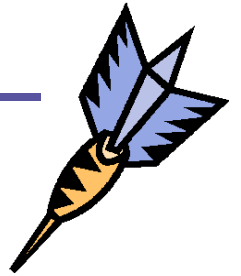
Independent School District 877
Buffalo-Hanover-Montrose

November 23, 2015



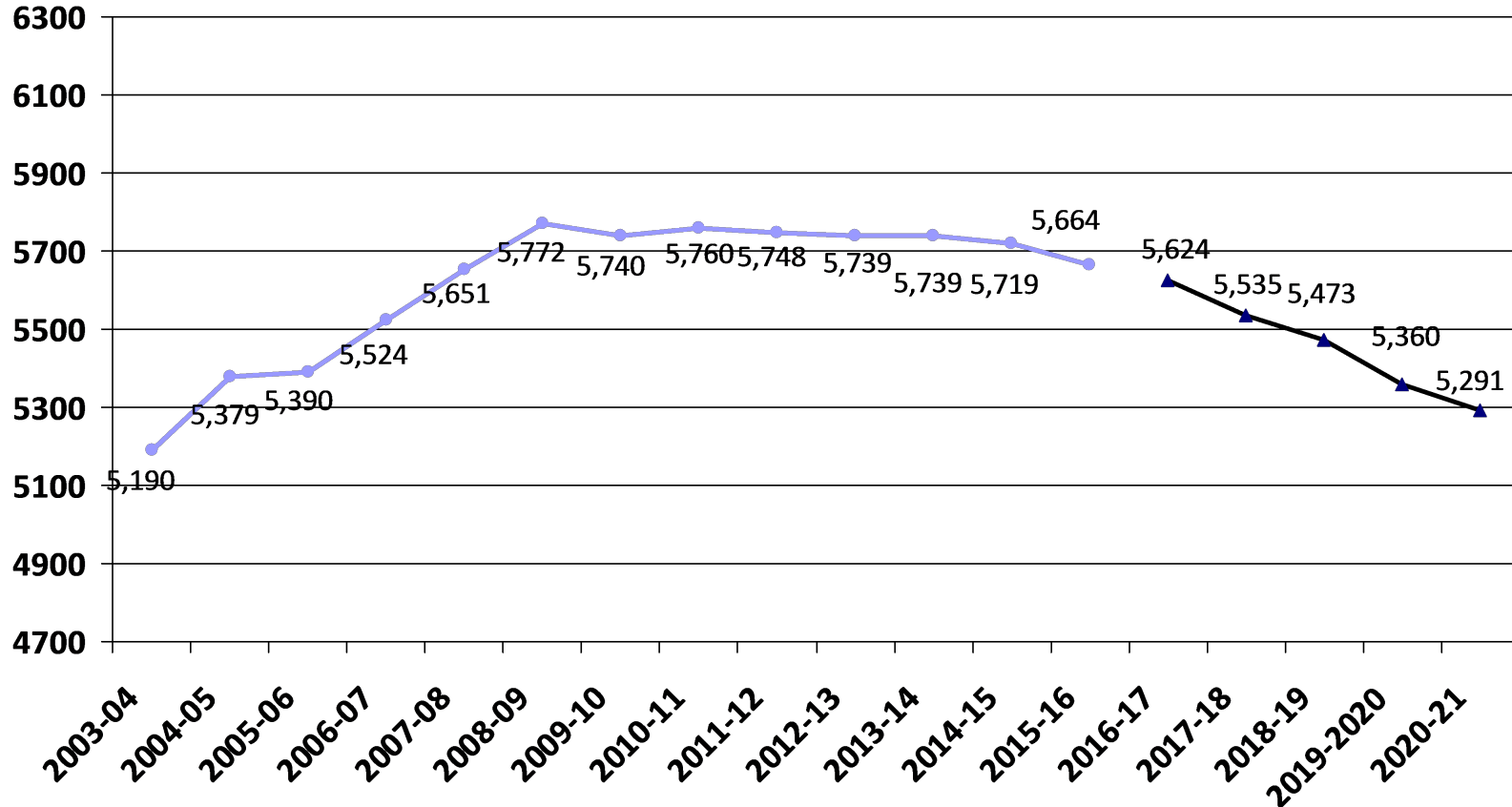
Enrollment Projection Report

- Review of K-12 enrollment as of Oct. 1st
- Resident enrollment
- Open enrollment & tuition
- Nonpublic enrollment
- Fall vs. spring enrollment
- Review 2015-16 enrollment projection
- 2016-17 enrollment projection





Historical and 2016-17 Projected K-12 Enrollment as of Oct. 1st





Review of K-12 Enrollment as of Oct. 1st

- The school district growth trend came to a halt in the 2009-10 school year and we are behind of the projection for 2015-16.
- The five-year enrollment is a decline and currently averaging -19.2 students/year.
- Total enrollment decline for the past five years is -96 students or -1.67%.

	2011-12	2012-13	2013-14	2014-15	2015-16
K-12 enrollment	5,734	5,742	5,739	5,719	5,664
Change over prior year	-26	8	-3	-20	-55
% change	-.45%	.14%	-.05%	-.35%	-.96%

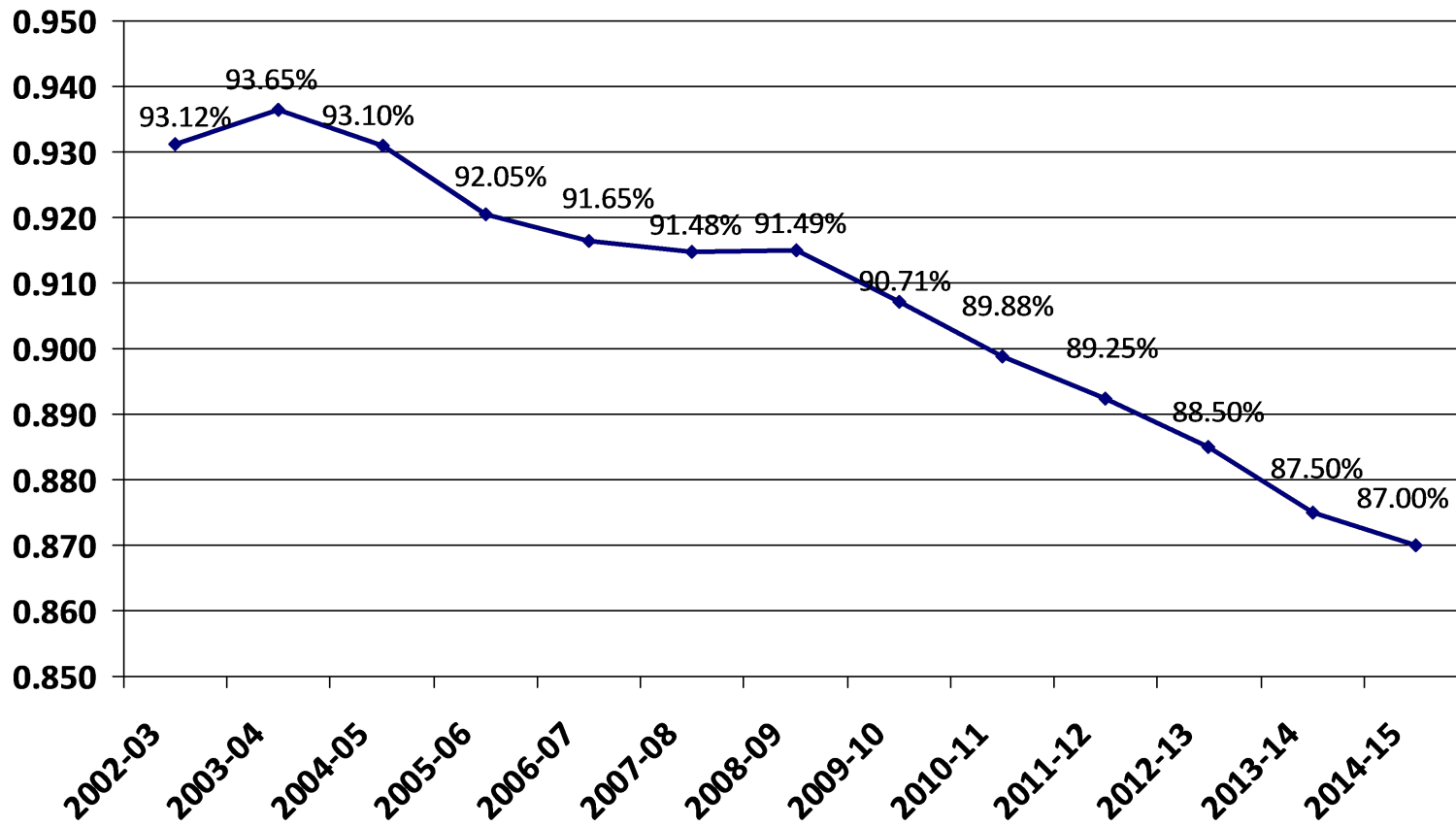


Total Resident Students Enrolled in ISD 877 as of June 30th

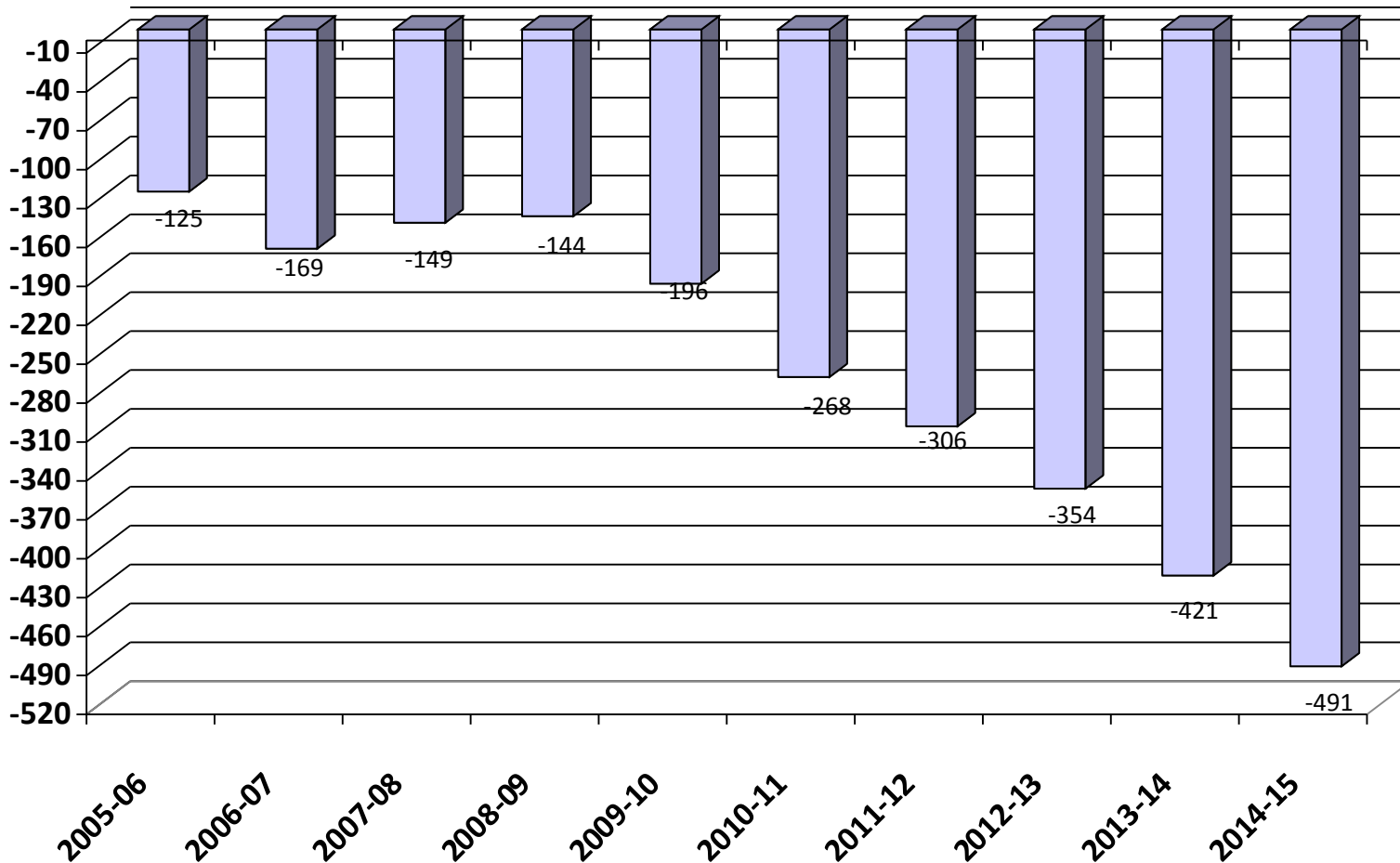
- BHM's resident population and residents served population grew this past year. Residents served was at its highest point in the last five years but still shows a decline in % served vs total population.

	2010-11	2011-12	2012-13	2013-14	2014-15
Residents served	5,394	5,358	5,380	5,367	5,402
Residents going elsewhere	607	645	701	768	810
Total Residents	6,001	6,003	6,081	6,135	6,212
Change over prior year	82	2	78	54	77
% change	1.39%	.03%	1.3%	.89%	1.26%
% Served vs Total Population	89.9%	89.3%	88.5%	87.5%	87.0%

Total Resident Students Enrolled in ISD 877 as of June 30th



Open Enrollment & Tuition Net Gain/Loss as of June 30th



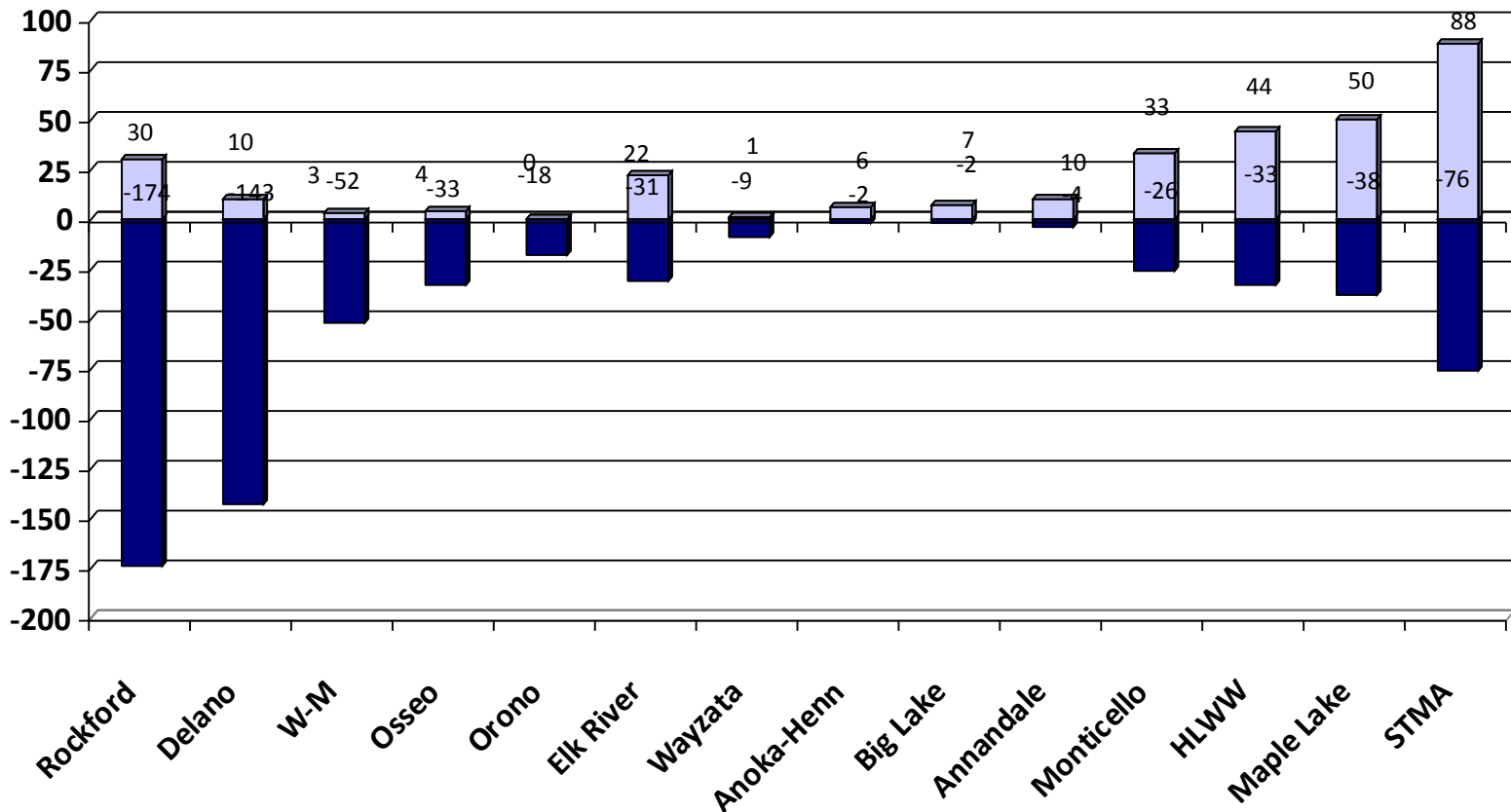


2014-15 Open Enrollment & Tuition Gain/Loss by District as of June 30th

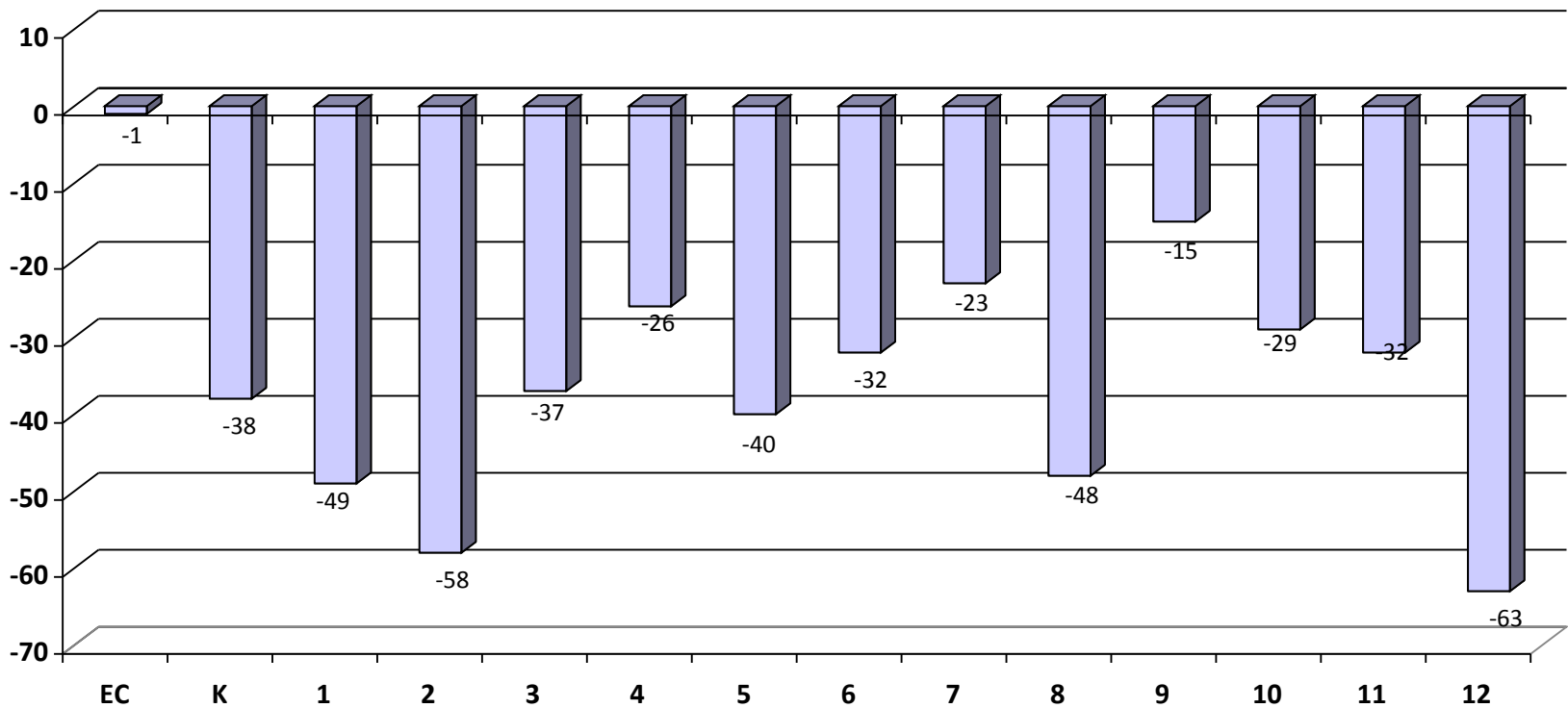
District	In	Out	Net	
Rockford	30	-174	-144	
Delano	10	-143	-133	
Watertown-Mayer	3	-52	-49	
Osseo	4	-33	-29	<u>Other</u>
Orono	0	-18	-18	<u>Targeted Services,</u>
Elk River	22	-31	-9	<u>Tuition, and Online</u>
Wayzata	1	-9	-8	WTC -46
Anoka-Hennepin	6	-2	4	MAWSECO -13
Big Lake	7	-2	5	Mn Transitions -15
Annandale	10	-4	6	Swan River Charter -10
Monticello	33	-26	7	Houston (online) -11
Howard Lake-Waverly-Winsted	44	-33	11	Beacon Academy -9
Maple Lake	50	-38	12	
St. Michael-Albertville	88	-76	12	



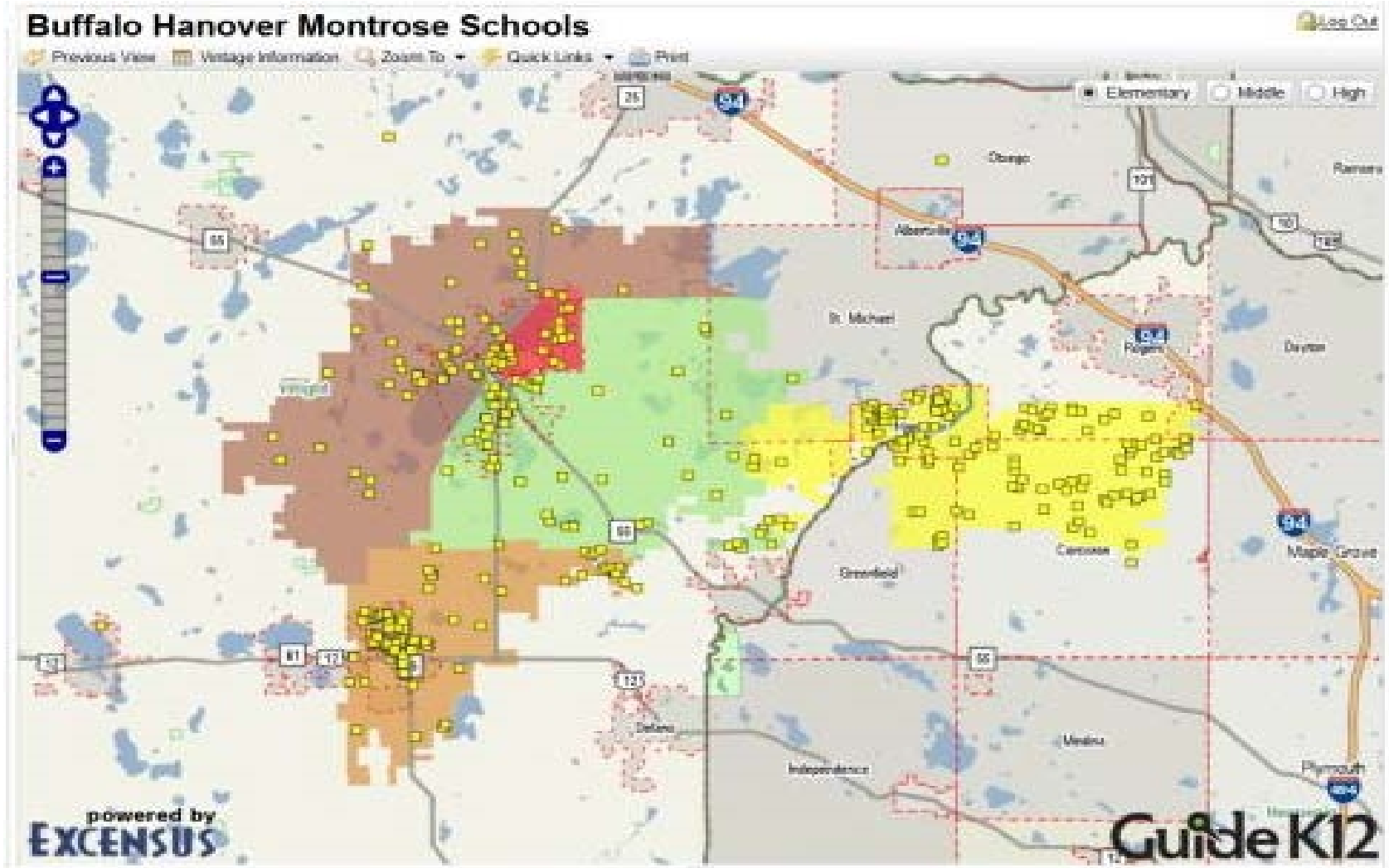
2014-15 Open Enrollment & Tuition Gain/Loss by District as of June 30th



2014-15 Open Enrollment & Tuition by Grade as of June 30th



2015-16 Resident Open Enrolled to Other Districts

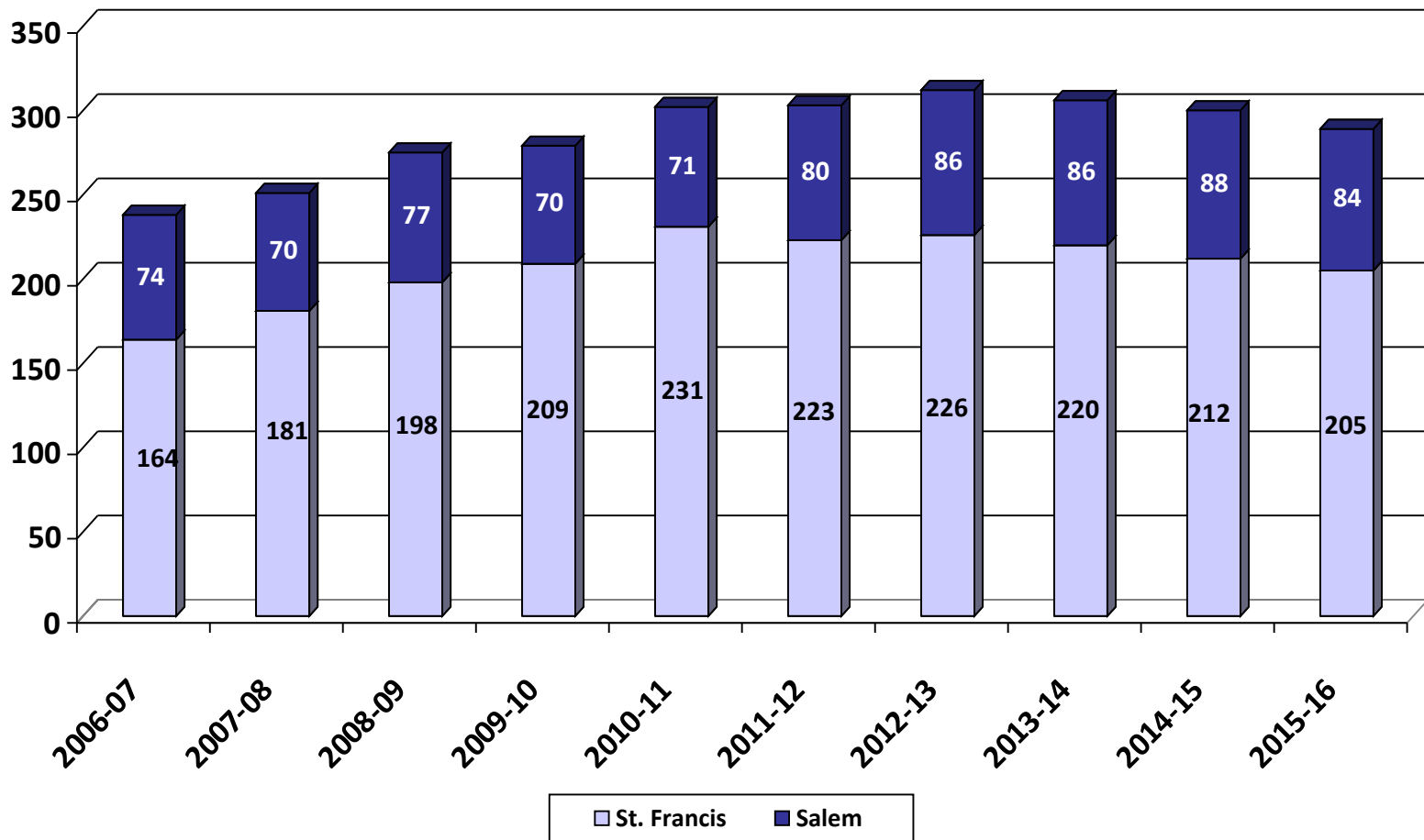


Nonpublic History

- Two nonpublic schools in the BHM district: St. Francis Xavier in Buffalo and Salem Lutheran in Greenfield.
- Both schools serve students from kindergarten through 8th grade.

	06-07	07-08	08-09	09-10	10-11	11-12	12-13	13-14	14-15	15-16
Salem	74	70	77	70	71	80	86	86	88	84
St. Francis	164	181	198	209	231	223	226	220	212	205
Total	238	251	275	279	302	303	312	306	300	289
# Change	17	13	24	4	23	1	9	-6	-6	-11
% Change	7.7%	5.5%	9.6%	1.5%	8.2%	.33%	2.97%	-.92%	-1.96%	-3.67%

Nonpublic History



2014-15 Enrollment Fall vs. Spring

- Historically, the district's K-12 enrollment decreases from October 1 to June 1.
- Most of the enrollment drops happen in grades 9-12.

	Oct. 1st, 2014	Jun. 1st, 2015	Net
K	417	407	-10
Gr. 1-5	2,126	2,132	6
Gr. 6-8	1,398	1,390	-8
Gr. 9-12	1,778	1,689	-89
Total	5,719	5,609	-101

Historical Enrollment Fall vs. Spring

- The district had one flat year (2006-07) of enrollment growth. All other years have declined during the year.

	K	Gr. 1-5	Gr. 6-8	Gr. 9-12	Net
2004-05	-1	0	3	-55	-53
2005-06	4	-1	-9	-56	-62
2006-07	-2	-25	10	-33	0
2007-08	9	3	3	-55	-40
2008-09	0	0	-24	-84	-108
2009-10	-2	14	-17	-58	-63
2010-11	1	-11	-10	-63	-83
2011-12	-10	-11	-14	-94	-129
2012-13	-2	-14	1	-86	-101
2013-14	2	-7	2	-127	-130
2014-15	-10	6	-8	-89	-101

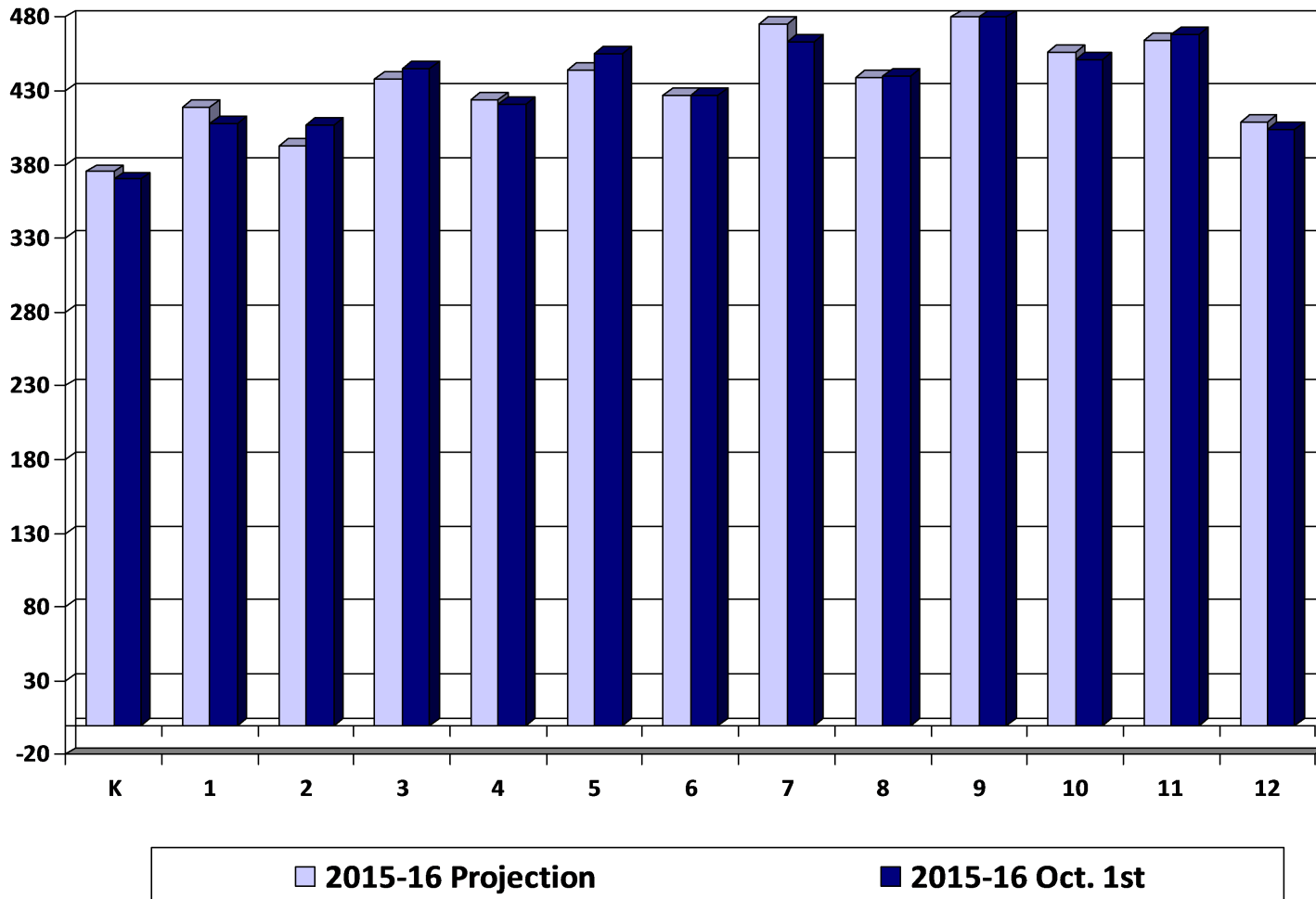


Review of 2015-16 Enrollment Projection

- Last year's enrollment projection was over-estimated by 25 students.
- Our internal monthly enrollment reports adjust down post-secondary and shared time students.
- The official Oct. 1st MARSS submission by MDE will report a higher enrollment with post-secondary and shared time students.

	2015-16 Projection	2015-16 Oct. 1st	Difference
K	375	370	-5
Gr. 1-5	2,118	2,136	18
Gr. 6-8	1,341	1,330	-11
Gr. 9-12	1,855	1,828	-27
Total	5,689	5,664	-25

Review of 2015-16 Enrollment Projection by Grade



Enrollment Projection Data

- The district uses the Schoolfinances.com enrollment projection model.
- The model allows schools to develop enrollment projections based on three different sets of data:
 - October 1st MARSS submission**
 - End of Year ADM** is generally used for financial forecast
 - District Data** allows schools to enter enrollment history taken at any time, resident ADM or any other historical data by grade



Kindergarten Projection Methods

- **Hold constant** maintains the 2015-16 kindergarten level.
- **Linear projection** is a straightforward mathematical projection based on nothing more than the past five years of data.
- **County birth method** uses the total number of live births in Wright County and examines what percentage of those births enroll in kindergarten. The projection is based on the average percentage of the last four years.
- **Zip code method** examines the zip codes in the district and uses a linear projection of live births on the last four years of data and computes the projected enrollment based on the lowest, average, and highest ratios.
- **District-determined method** examines county birth rates in Wright County and compares that to actual student enrollment numbers in the District and projects that percentage for the next five years.

Kindergarten Projection Methods

Birth Year	Kdgn Enroll Year	Wright Co. Births	Actual Kdgn Enrollment	% of Wright Co. Births Enrolled
2004	2009	1,888	434	23.0%
2005	2010	2,023	455	22.5%
2006	2011	2,152	417	19.4%
2007	2012	2,183	433	19.8%
2008	2013	2,095	378	18.0%
2009	2014	1,943	417	21.5%
2010	2015	1,900	370	19.5%
2011	2016	1861	367*	19.7%*
2012	2017	1830	361*	19.7%*
2013	2018	1787	352*	19.7%*
2014	2019	1799	354*	19.7%*

* Projected K enrollment based on County births

Kindergarten Projection Methods

- Using Oct. 1st district data

	11-12	12-13	13-14	14-15	15-16	16-17	17-18	18-19	19-20	20-21
Actual enrollment	417	433	387	417	370					
Hold constant						370	370	370	370	370
Linear projection						374	363	352	342	331
Wright Co. Ave. births						371	365	357	356	349
Zip code method - Low						355	343	324	344	342
District Determined Method						367	361	352	354	357

Enrollment Projection Methods

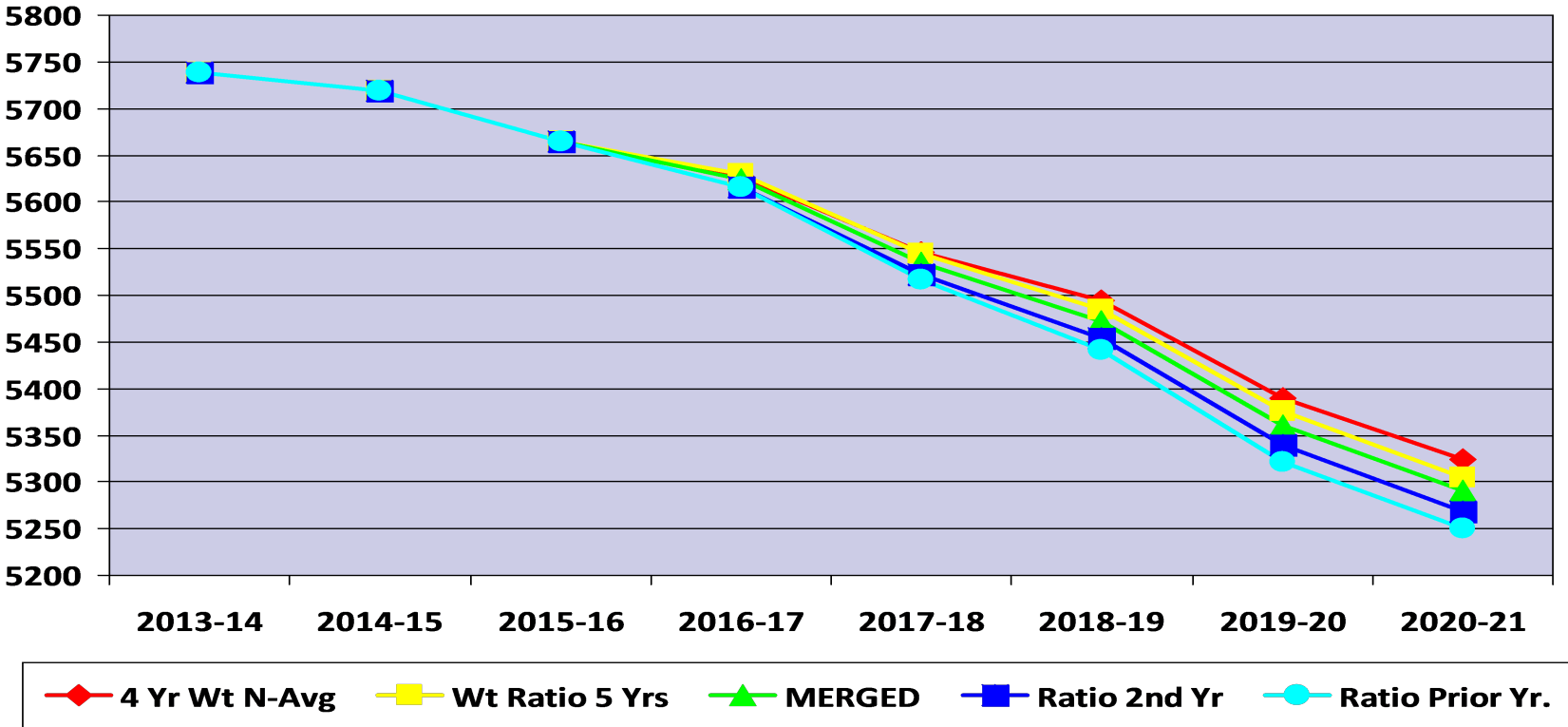
- After the kindergarten enrollment projection is complete, the overall K-12 enrollment is determined by a variety of methods:
 - Cohort Survival Method
 - Weighted Cohort Survival Method
 - Numerical Survival Method
 - Weighted Numerical Survival Method
 - Merged Method

Projection Methods Comparison

- Using Oct. 1st district data, eighteen different variations were examined.
- The following five were selected for detailed analysis:

	13-14	14-15	15-16	16-17	17-18	18-19	19-20	20-21
4 Yr Wt N-Avg	5,739	5,719	5,664	5,627	5,546	5,495	5390	5,325
Wt Ratio 5 Years	5,739	5,719	5,664	5,630	5,544	5,485	5,376	5,304
Merged	5,739	5,719	5,664	5,624	5,535	5,473	5,360	5,291
Ratio 2nd Yr.	5,739	5,719	5,664	5,616	5,522	5,454	5,340	5,268
Ratio Pr. Yr	5,739	5,719	5,664	5,615	5,516	5,441	5,321	5,251
Max Difference				15	30	54	68	74

Projection Methods Comparison

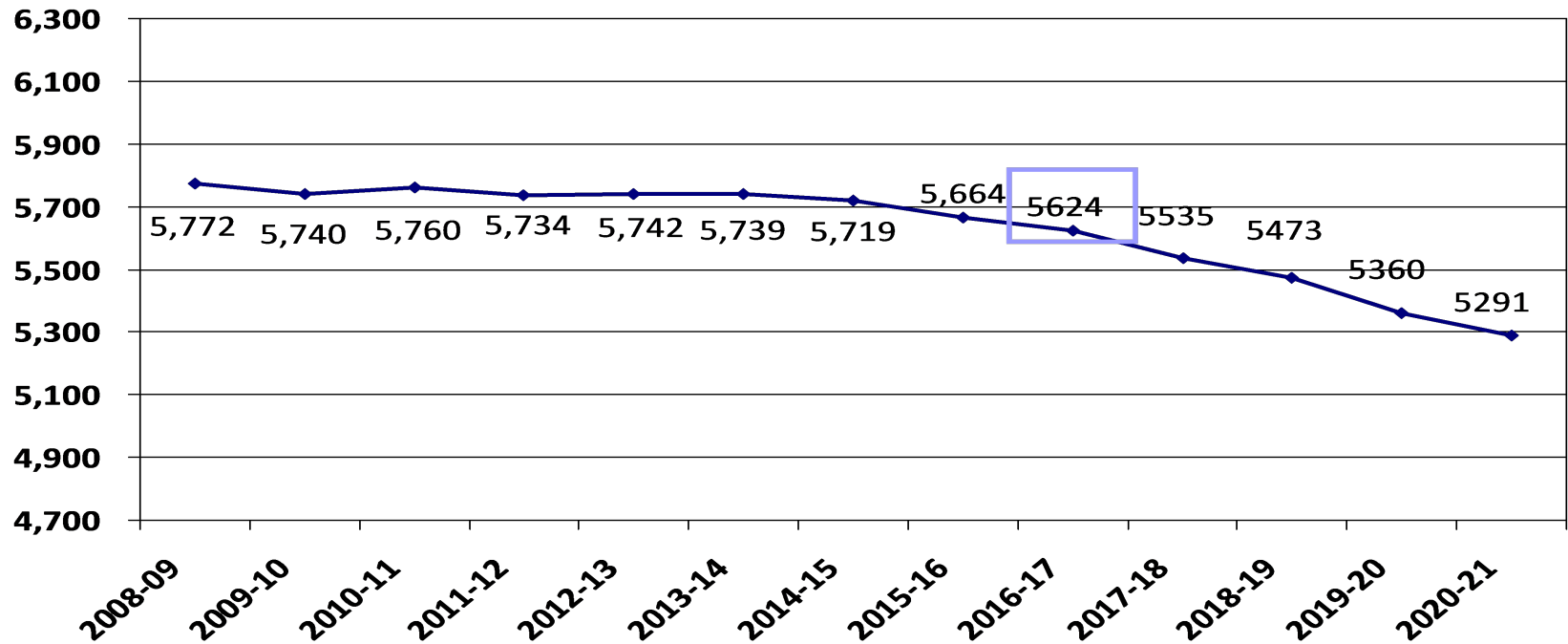




2016-17 Enrollment Projection

- Factors considered: housing market, economic conditions, Wright County births, open enrollment, budget reductions, and new programs (ADED K, Quest, STEM)
- Merged Method
- K-12 Enrollment 5,624
- Decrease of 40 students or 0.71%

2016-17 Enrollment Projection



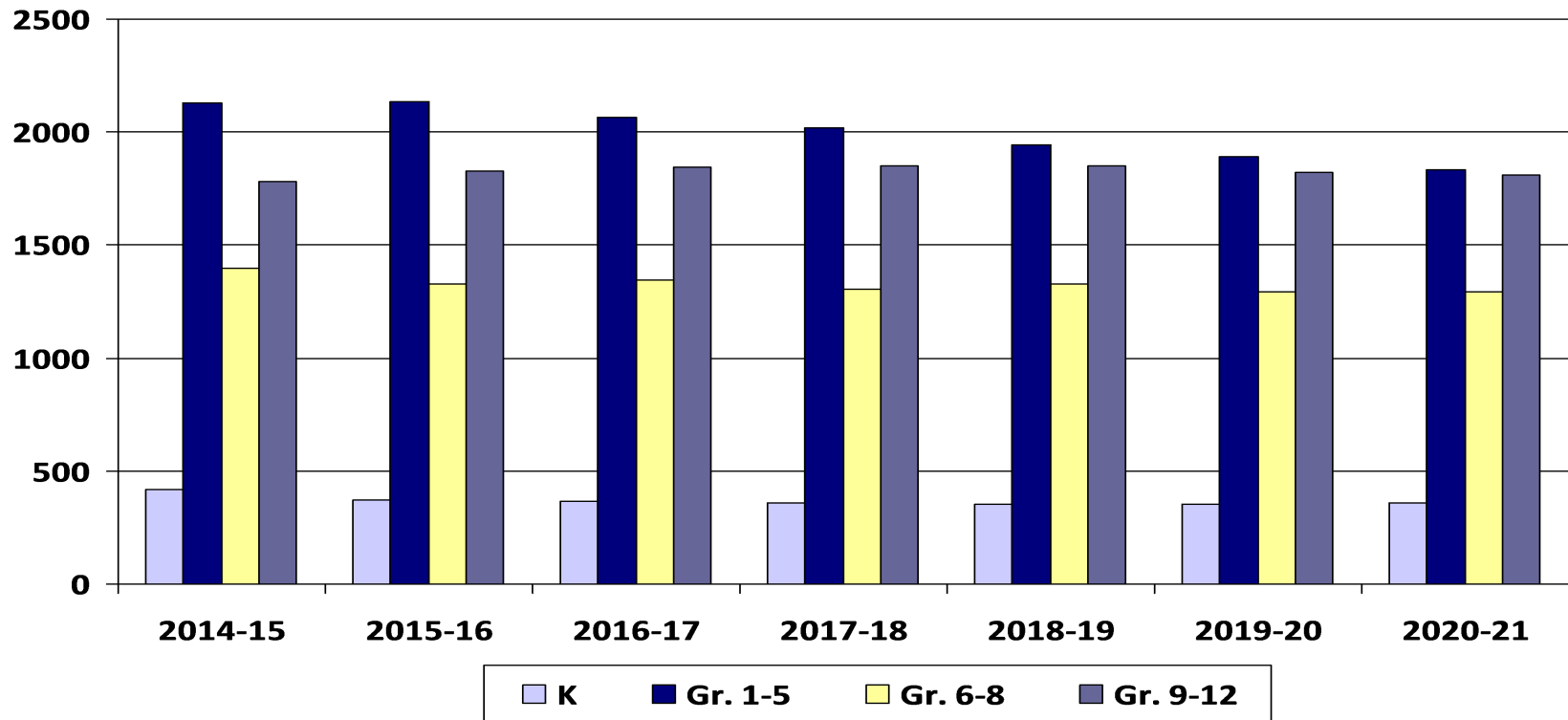


2016-17 Enrollment Projection by Grade Groupings

- With future enrollments, need to consider building capacity:
 - BHS – 1,935, PHX – 64 and PRIDE – 25
 - BCMS – 1,375
 - Elementary – 3,200

	2015-16	2016-17	2017-18	2018-19	2019-20	2020-21
K	370	367	361	352	354	357
Gr. 1-5	2,136	2,063	2,017	1,942	1,891	1,831
Gr. 6-8	1,330	1,347	1,308	1,331	1,291	1,292
Gr. 9-12	1,828	1,847	1,848	1,848	1,824	1,811
Total	5,664	5,624	5,534	5,473	5,360	5,291
		-40	-90	-61	-113	-69
		-.71%	-1.60%	-1.10%	-2.06%	-1.29%

2016-17 Enrollment Projection by Grade Groupings

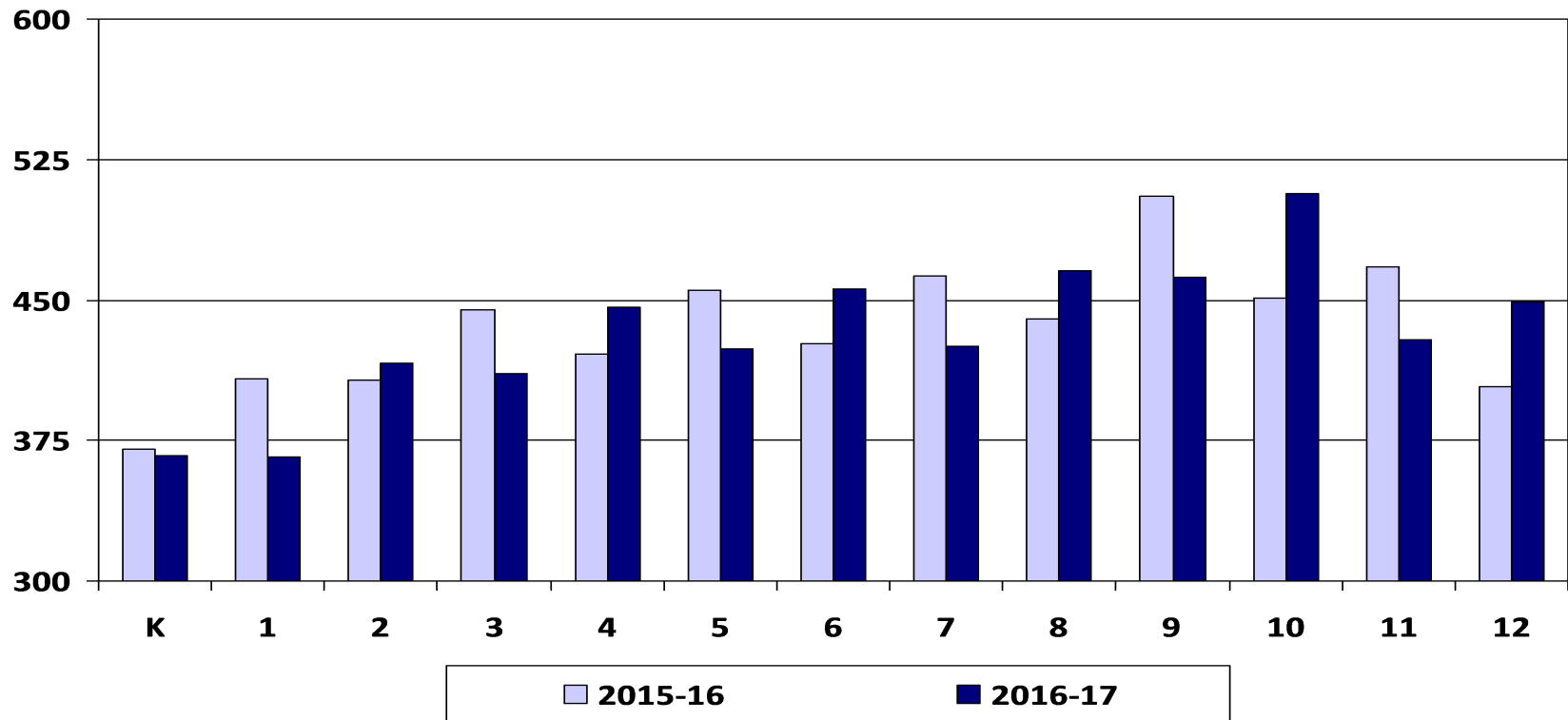




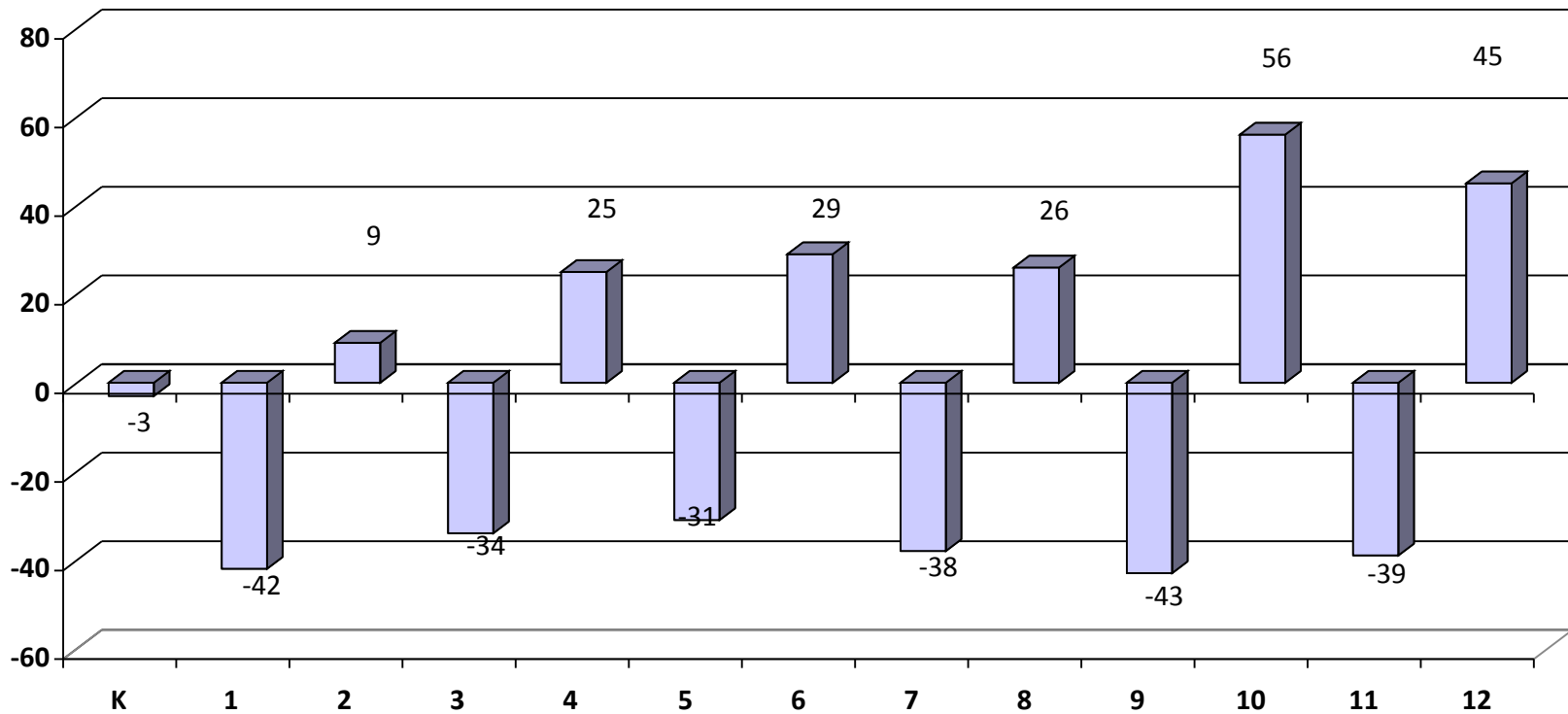
2016-17 Enrollment Projection by Grade

	2015-16	2016-17	2017-18	2018-19	2019-20	2020-21
K	370	367	361	352	354	357
1	408	366	364	358	349	351
2	407	416	373	371	365	356
3	445	411	420	378	375	369
4	421	446	412	421	378	375
5	455	424	448	414	424	380
6	427	456	426	450	417	426
7	463	425	455	424	448	415
8	440	466	427	457	426	451
9	505	462	489	450	480	449
10	451	507	464	491	452	483
11	468	429	484	442	468	430
12	404	449	411	465	424	449
Total	5,664	5,624	5,534	5,473	5,360	5,291

2015-16 Actual vs. 2016-17 Enrollment Projection by Grade



2016-17 Enrollment Change by Grade



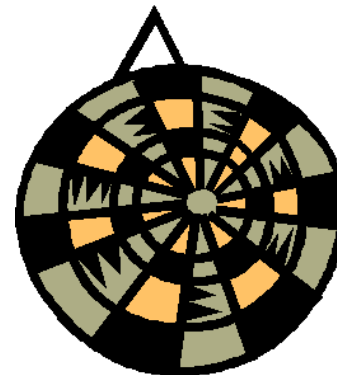
WADM Report

- The weighted average daily membership (WADM) projection shows a decline in student aid.
- Keep in mind the district's enrollment history also tends to decline from Oct. 1st to June 1st.

	2016-17		2017-18		2018-19		2019-20	
	Enroll	WADM	Enroll	WADM	Enroll	WADM	Enroll	WADM
HK	48	48	48	48	48	48	48	48
K	367	367	361	361	352	352	354	354
Gr. 1-3	1,193	1,193	1,157	1,157	1,107	1,107	1,089	1,089
Gr. 4-6	1,326	1,326	1,286	1,286	1,285	1,285	1,219	1,219
Gr. 7-8	891	1,069	882	1,058	881	1,057	874	1,049
Gr. 9-12	1,847	2,216	1,848	2,218	1,848	2,218	1,824	2,189
ECSE	104	404	101	101	98	98	98	98
M.C.P.U		11		26		19		33
Total	5,776	6,334	5,683	6,255	5,619	6,184	5,506	6,079

Conclusion

- Uncertain economic factors make enrollment projections difficult.
- BHM's enrollment is projected to decline over the next three to five years.



5,624