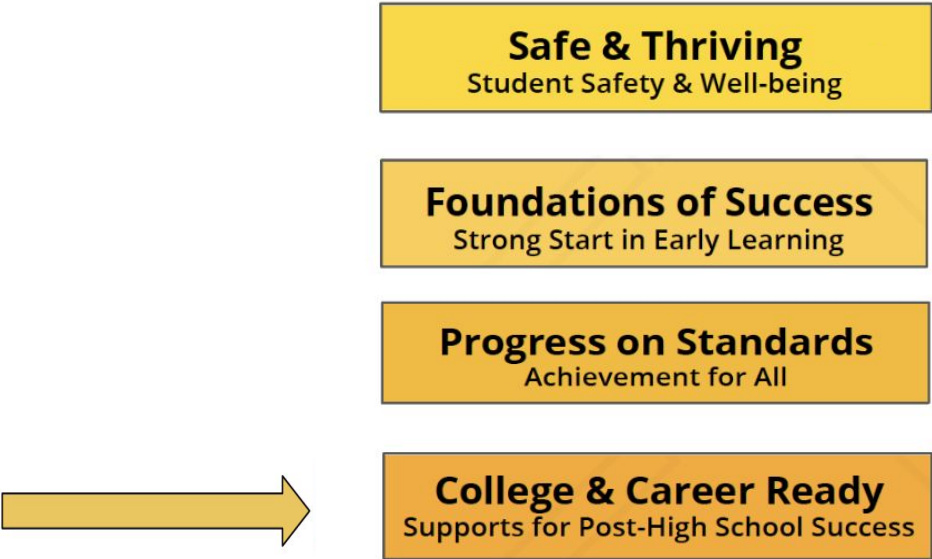


Career Technical Education

Presenters: Dr. Heather Cordie, Dr. Josh Fritts, Jill O'Neill,
Diane Fitzpatrick, Bianca Bebb, and Madeline Shick

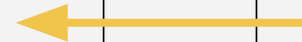
School Board Meeting
May 28, 2024

District Strategic Plan Goal Areas



College & Career Ready Supports for Post-High School Success

Outcomes	Strategies	Building or District	Phase
All students passing Language Arts and Math classes in 6th grade	Describe and implement early warning system at all levels	District & Building	Developing
	Guaranteed viable and culturally responsive curriculum with coherent scope and sequence supported by high-leverage instructional strategies and common assessment practices at all levels <ul style="list-style-type: none"> Consider bulleting out a list of examples/strategies 	District & Building	New / Developing
Every 9th grader on track for graduation	Support 9th grade on track success with school-level teams	Building	Sustaining
	Provide targeted summer school for transition between grades 8 & 9 and support between 9 & 10	District & Building	Sustaining
	Explore school scheduling models to maximize learning and continued growth	District	New / Developing
All students leave each level with a plan and a purpose	Fully implemented and consistent student-driven post-secondary plan starting at elementary level	District & Building	New / Developing
All students graduate and successfully complete dual credit, IB, AP, CTE and/or dual language courses	Support student access to and success in dual credit, Advanced Placement, International Baccalaureate, Career Technical Education and dual language courses <ul style="list-style-type: none"> Systematic creation and support of course offerings Remove barriers to entry Intentional outreach to increase access Create a support/mentorship model to bolster student success 	District & Building	Developing / Implementing / Sustaining



BSD's Equity Lens

Beaverton School District **EQUITY LENS**

In order to break the predictive link between student demographics and student success, we must apply the principle of equity to all aspects of our schools/departments.



EQUITY

In Beaverton, we aspire to have the following 5P's:



Partnership

elevates multiple perspectives from historically underserved communities



People

reflect the diversity of our student body



Place

is safe, inclusive and affirming for historically underserved students and their families



Policy

articulates a vision for equity



Practice

eliminates gaps in access, opportunity, and expectation

1. Whose **voice** is and isn't represented in this decision?
2. Who does this decision **benefit** or **burden**?
3. Is this decision in alignment with the **BSD Equity Policy**?
4. Does this decision **close** or **widen** the access, opportunity, and expectation gaps?

Learning Objectives for today's meeting

- Learn about BSD's current CTE programs
- Understand how industry, business, and post-secondary partnerships inform and support CTE programs
- Learn about future expansion and enhancement of CTE programs in BSD

What is Career Technical Education?

“CTE is a broad term for education that combines academic and technical skills with the knowledge and training needed to succeed in today’s labor market. CTE prepares students for the world of work by introducing them to workplace competencies in a real-world, applied context.”

Erin Flynn
Education Northwest

- Career-connected learning in the classroom and with industry partners
- Work-based learning in workplace settings to apply knowledge and skills
- Industry Recognized Credentials
- Student Leadership and Career & Technical Student Organizations

6,845

**BSD students in at least
1 CTE course in 2023-24**

56%

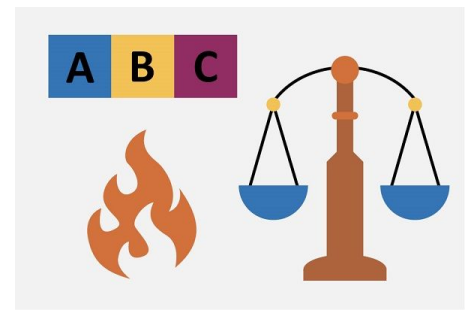
**of all BSD high school students
are enrolled in at least one CTE
course in 2023-24**



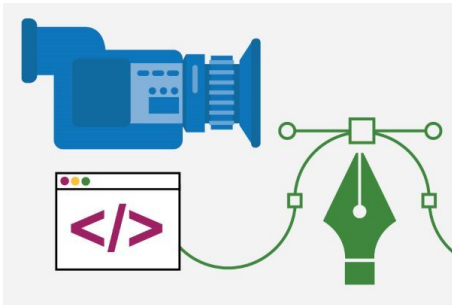
Agriculture, Food &
Natural Resource Systems



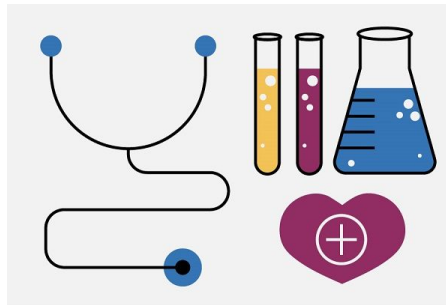
Business &
Management



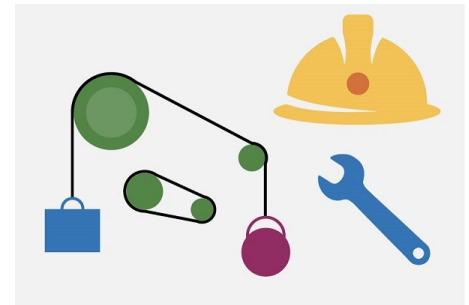
Human Resources



Arts, Information
& Communication



Health Sciences



Industrial & Engineering
Systems

32 CTE Programs in BSD

Agriculture, Food & Natural Resources

- Sustainable Agriculture

Arts, Information and Communications

- Computer Science
- Computer Programming & Coding
- Digital Arts
- Information & Communication Technology

Business and Management

- Business
- Hospitality & Tourism
- Marketing

Health Science

- Biomedical Studies
- Health Careers
- Health Sciences

Human Resources

- Education

Industrial and Engineering Systems

- Architecture & Construction
- Auto Technology
- Construction
- Engineering
- Manufacturing

Sustainable Agriculture

➤ Terra Nova



Construction

- Aloha HS
- Mountainside HS
- Option Program at Community School



Auto Technology

- Aloha HS
- Option Program at AHS



Business

- Mountainside HS

Marketing

- Beaverton HS
- Southridge HS
- Sunset HS
- Westview HS



Computer Programming / Coding

- Aloha HS
- Southridge HS
- Sunset HS

Computer Science & Information Technology

- BASE

Information Technology

- Mountainside HS



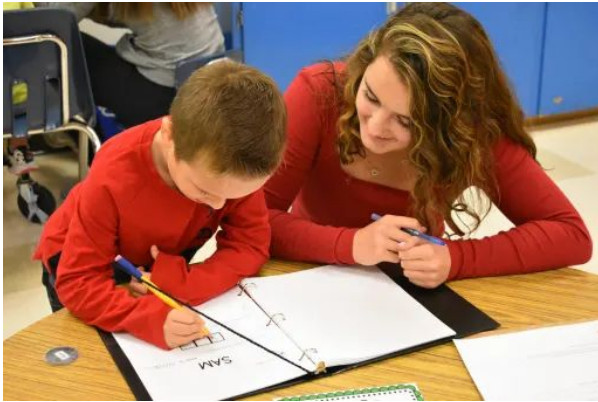
Digital Arts

- Aloha HS
- Beaverton HS
- Westview HS



Education

- Aloha HS
- Beaverton HS
- Westview HS



Engineering

- BASE
- Mountainside HS
- Southridge HS
- Sunset HS



Biomedical Studies

- BASE

Health Careers

- Option Program at BHS

Health Sciences

- Southridge HS



Culinary

- Mountainside HS
- Westview HS



Manufacturing

- Westview HS
- Option Program at WHS



School / Program of Study	Career Cluster	Career Learning Area	Post-Secondary Alignment	J A S O N D J F M A M J												J A S O N D J F M A M J												J A S O N D J F M A M J												J A S O N D J F M A M J																															
				J			A			S			O			N			D			J			F			M			A			M			J			J			A			S			O			N			D			J			F			M			A			M	
Aloha High School																																																																							
Architecture & Construction	Architecture & Construction	Industrial and Engineering Systems	PCC																																																																				
Automotive Technology*	Transportation	Industrial and Engineering Systems	PCC																																																																				
Computer Programming/Coding	Information & Communication Technology	Arts, Information & Communications	PCC																																																																				
Digital Arts	Art, AV Technology & Communication	Arts, Information & Communications	PCC																																																																				
Education	Education & Training	Human Resources	PCC																																																																				
Marketing	Marketing	Business & Management	PCC																																																																				
Beaverton Academy of Science & Technology																																																																							
Computer Science & Information Technology	Information & Communication Technology	Arts, Information & Communications	PCC																																																																				
Biomedical Studies	Health Sciences	Health Sciences	PCC																																																																				
Engineering	Engineering Technology	Industrial and Engineering Systems	PCC																																																																				
Beaverton High School																																																																							
Digital Arts	Art, AV Technology & Communication	Arts, Information & Communications	PCC																																																																				
Education	Education & Training	Human Resources	PCC																																																																				
Electrical Systems	Engineering Technology	Industrial & Engineering Systems	CCC																																																																				
Engineering	Engineering Technology	Industrial and Engineering Systems	PCC																																																																				
Health Careers*	Health Sciences	Health Sciences	PCC																																																																				
Marketing	Marketing	Business & Management	PCC																																																																				
Community School																																																																							
Construction*	Architecture & Construction	Industrial and Engineering Systems	PCC																																																																				
Mountainside High School																																																																							
Business	Business, Management & Administration	Business & Management	PCC																																																																				
Computer Science	Information & Communication Technology	Arts, Information & Communications	PCC																																																																				
Construction	Architecture & Construction	Industrial and Engineering Systems	PCC																																																																				
Engineering	Engineering Technology	Industrial and Engineering Systems	PCC																																																																				
Hospitality & Tourism	Hospitality & Tourism	Business & Management	COCC																																																																				
Southridge High School																																																																							
Computer Programming/Coding	Information & Communication Technology	Arts, Information & Communications	PCC																																																																				
Engineering	Engineering Technology	Industrial and Engineering Systems	PCC																																																																				
Health Sciences	Health Sciences	Health Sciences	PCC																																																																				
Marketing	Marketing	Business & Management	PCC																																																																				
Broadcasting & Journalism	Art, AV Technology & Communication	Arts, Information & Communications	PCC																																																																				
Sunset High School																																																																							
Behavioral Health	Health Sciences	Health Sciences	PCC																																																																				
Computer Programming/Coding	Information & Communication Technology	Arts, Information & Communications	PCC																																																																				
Engineering	Engineering Technology	Industrial and Engineering Systems	PCC																																																																				
Marketing	Marketing	Business & Management	PCC																																																																				
Terra Nova																																																																							
Sustainable Agriculture*	Agriculture, Food, & Natural Resource Systems	Agriculture, Food, & Natural Resource Systems	BMCC																																																																				
Westview High School																																																																							
Marketing	Marketing	Business & Management	PCC																																																																				
Digital Arts	Art, AV Technology & Communication	Arts, Information & Communications	PCC																																																																				
Education	Education & Training	Human Resources	PCC																																																																				
Hospitality & Tourism	Hospitality & Tourism	Business & Management	COCC																																																																				
Manufacturing*	Manufacturing	Industrial & Engineering Systems	PCC																																																																				
*Districtwide CTE Option Programs																																																																							

Exploration

Curriculum Development, Staffing,
and Licensure

Perkins Application

Fully Operational Program of Study

Perkins Revision/Renewal

Dormant

High Quality Programs of Study

- CTE programs of study are designed to meet the needs of students, business and industry
- Built around 6 core elements

6 Core Elements

- ★ Access & Equity
- ★ Standards & Content
- ★ Alignment & Articulation
- ★ Accountability & Evaluation
- ★ Student Support Services
- ★ Professional Development

Industry & Business Partnerships

- **Local industry / businesses**
 - Internships
 - Industry advisory boards
- **Beaverton Area Chamber of Commerce**
 - Internships
- **Washington County Chamber of Commerce**
 - Career-connected learning opportunities
- **Portland Area Career Technical Education Consortium (PACTEC)**
- **Post-secondary Institutions**

Future Expansion of CTE Programs

- Partner with local industry to enhance current programs and develop future programs that will meet the needs of industry and prepare students for high-demand, high-wage careers in our region

Expanding existing program

- Architecture courses added to SHS Engineering program

Exploring additional programs

- Behavioral Health at SHS
- Electrical Systems at BHS
- Engineering at BHS

Future Growth

- Engage stakeholders in development of a clear vision for CTE
- Increase access to and persistence in existing programs
- Develop Career-Connected Learning model for Grades 6-8
- Increase student, family and community awareness of CTE programs
- Expand partnerships with local industry for career-connected learning opportunities across PK-12

Questions

Thank you!