

O'Donnell Elementary



# SCHOOL IMPROVEMENT PLAN

December 15, 2025



EAST AURORA SCHOOL DISTRICT 131

# SIP TEAM

Tonetta Davis, **Principal**  
Maritere Wise, **Assistant Principal**  
Paul Mutschler, **Assistant Principal**  
Sandra Vazquez, **PreK Teacher**  
Kathryn Driessen, **Math Interventionist**  
Jenni Schlaiss, **Teacher**  
Theresa Stellman, **Teacher**  
Dina Piwowarczyk, **PK Instructional Coach**  
Chris Hayes, **Social Worker**  
Madeley Rubio, **Parent Liaison**  
Darren McArdle, **Teacher**  
Joyce Ladewig, **Teacher**



## Our Mission:

O'Donnell students, parents, staff, and community will partner to create a safe and nurturing environment that promotes a culture of high academic and social-emotional expectations for all learners using an engaging curriculum and purposeful assessments that are reflective to provide differentiated learning opportunities for student success.

## Nuestra Misión:

Los estudiantes, padres, personal y la comunidad de O'Donnell colaborarán para crear un ambiente seguro y acogedor que promueva una cultura de altas expectativas académicas y socioemocionales para todos los estudiantes, utilizando un currículo atractivo y evaluaciones intencionales que sean reflexivas y ofrezcan oportunidades de aprendizaje diferenciado para el éxito de cada estudiante.

## Our Vision:

O'Donnell School encourages independent thinkers and problem solvers who are adaptable to an ever-changing world.

## Nuestra Visión:

La Escuela O'Donnell fomenta pensadores independientes y solucionadores de problemas que sean capaces de adaptarse a un mundo en constante cambio.



# OUR CURRENT REALITY



	All Students	IEP	EL	Black	Hispanic	White	Two or More	Asian	Newcomer	Males	Females
<b>Math Achievement (MAP)</b>	22.3%	3.03%	16.77%	24.24%	17.16%	46.15%	50.00%	80.00%	20.00%	23.81%	20.98%
<b>Math Proficiency IAR (2025)</b>	7.40%	0.0%	3.00%	12.54%	7.2%	28.6%	0.0%	25.00%	0.00%	8.30%	9.9%
<b>iReady (K-8)</b>	3.4%	0.00%	0.6%%	8.8%	0.5%	23.1%	0.0%	20.00%	4.5%	3.2%	3.5%
<b>Literacy Achievement (MAP)</b>	13.38%	0.00%	7.45%	21.21%	6.86%	46.15%	50.00%	60.00%	5.00%	10.32%	16.08%
<b>Literacy Proficiency (IAR)</b>	16.40%	3.7%	6.10%	12.5%	14.30%	57.20%	33.30%	25.00%	0.00%	11.00%	20.90%
<b>PreK-Desired Results Developmental Profile (DRDP)-LLD10 (Writing)</b>	44.3%	30.0%	36.1%	N/A	N/A	N/A	N/A	N/A	N/A	41.7%	45.5%
<b>PreK-Desired Results Developmental Profile (DRDP)-Cog 3 (Math)</b>	29.5%	44.4%	27.8%	N/A	N/A	N/A	N/A	N/A	N/A	31.4%	27.3%





# OUR CURRENT REALITY

	All Students	IEP	EL	Black	Hispanic	White	Two or More	Asian	Newcomer	Males	Females
Annual Daily Attendance (ADA)	93.60%	92.50%	93.20%	94.8%	93.10%	94.30%	96.80%	94.50%	N/A	93.60%	93.60%
Chronic Absenteeism 11/28/25	22%	29%	23%	12%	24%	29%	17%	10%	N/A	21%	22%
Referrals	15.0%	28.9%	7.6%	37.0%	10.2%	11.1%	42.9%	0.0%	N/A	19.1%	11.3%



# OUR FOCUS ON LITERACY:

## SMART GOAL:

O'Donnell School will increase the percentage of students meeting or exceeding age level expectations in literacy by 6% across all reported groups/demographics, as measured by the Spring 2026 DRDP results, compared to Spring 2025 results.

O'Donnell School will increase the percentage of students meeting or exceeding grade-level expectations in literacy by 6% across all reported groups/demographics, as measured by the Spring 2026 Illinois Assessment of Readiness (IAR), compared to Spring 2025 results.



## Priority Teaching Practice:

O'Donnell Elementary will strengthen student engagement by creating meaningful learning experiences and better understanding how students think. Teachers and leaders will use assessments to identify misconceptions and celebrate growth. Through shared planning and collaboration, staff will select and apply effective engagement strategies and take collective responsibility for improving learning.

We will accomplish this by intentionally embedding academic discourse within Tier I and Tier II reading instruction across both whole-group and small-group settings to strengthen comprehension, critical thinking, and student ownership of learning.



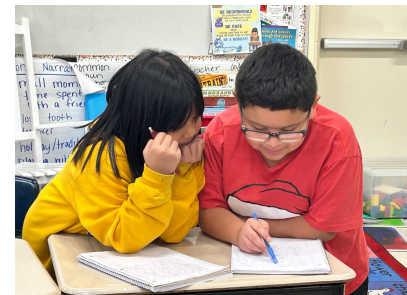
## Key Actions:

Strengthen consistent, intentional small-group instruction through professional development and small-group resources.

Monitor ELA data (writing, foundational skills, vocabulary, fluency) with focus on EL/CWD.

Increase collaboration and instructional alignment through targeted planning, coaching, and peer observations

Provide PD on writing, annotating, vocabulary supports, and vertical small-group alignment.



# OUR FOCUS ON NUMERACY:

## SMART GOAL:

PreK: O'Donnell School will increase the percentage of students meeting or exceeding age level expectations in mathematics by 6% across all reported groups/demographics, as measured by the Spring 2026 DRDP results, compared to Spring 2025 results.

O'Donnell School will increase the percentage of students meeting or exceeding grade-level expectations in mathematics by 6% across all reported groups/demographics, as measured by the Spring 2026 Illinois Assessment of Readiness (IAR), compared to Spring 2025 results.

## Priority Teaching Practice:

O'Donnell Elementary will intentionally engage all students in meaningful learning. Teachers and leaders will deepen their understanding of student thinking by identifying misconceptions, celebrating moments of insight, and using assessments to show growth. Through collaborative planning, staff will select and share effective engagement strategies and take collective responsibility for this work. This shared approach will help students make measurable academic progress, stay focused, develop intrinsic motivation, and build a strong growth mindset.

## Key Actions:

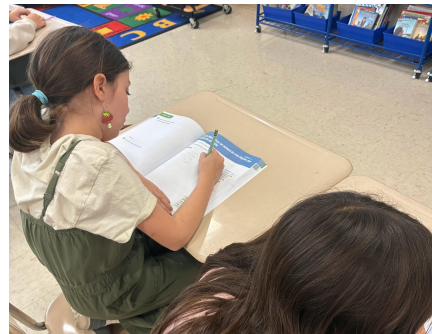
Set clear expectations and routines for small-group instruction and CFA administration.

Create and share a needs-assessment survey and an action-step timeline for staff.

Monitor instruction through regular walkthroughs and data tracking (iReady, MP3 N&O, EL/CWD).

Strengthen instruction by planning for engaging strategies and supporting vocabulary (especially EL/CWD).

Build a collaborative culture by sharing successes and using learning walks, pineapple charts, and modeling.





# OUR FOCUS ON A CULTURE FOR BELONGING:

## SMART GOAL:

PreK: By June 2026, O'Donnell School will foster a culture for belonging measured by a 6% increase in the overall TPOT score as compared to the 2025 Spring results.

By June 2026, O'Donnell School will foster a culture for belonging that fewer than 25% of all students are identified as Chronically Absent as measured by end of the year attendance records in alignment with state reporting guidelines.

By June 2026, O'Donnell School will foster a culture for belonging with a decrease of 5% from 382 in ODR Data

## Priority Teaching Practice:

O'Donnell educators will foster a collaborative learning culture where students, staff, and families actively engage in learning, reflect on progress, and set shared goals. Through intentional reflection and accountability, teachers will strengthen trust, build collective capacity, and improve relationships across the school community. Leading to better attendance, fewer behavior referrals, and a stronger sense of belonging.



## Key Actions:

**Boost Family & Community Engagement:** Family nights, community partners, parent challenge, family day events.

**Build Positive School Culture:** student town halls, quarterly behavior incentives, culturally responsive practices.

**Improve Communication:** share 5Essentials data, attendance initiatives, and keep student work displays updated.

**Strengthen SEL & Restorative Practices:** SEL family nights and Restorative Practices Professional Development

**Enhance Early Childhood Systems:** review preschool schedule (TPOT) and monitor Pyramid Model implementation.





EAST AURORA SCHOOL DISTRICT 131

