

*Denton
Independent
School
District*

Quarterly
Report
1Q19



*Learn from Yesterday...
Understand Today...
Plan for Tomorrow*



TEMPLETON
DEMOGRAPHICS



Economic Conditions – DFW Area (March 2019)

3.1%

115,786 new jobs
National rate 1.0%



Job Growth

Unemployment Rate



U.S. 3.9%
Texas 3.5%
DFW MSA 3.3%
Denton 2.9%

-0.3%

34,523

1,007 more starts than 1Q18



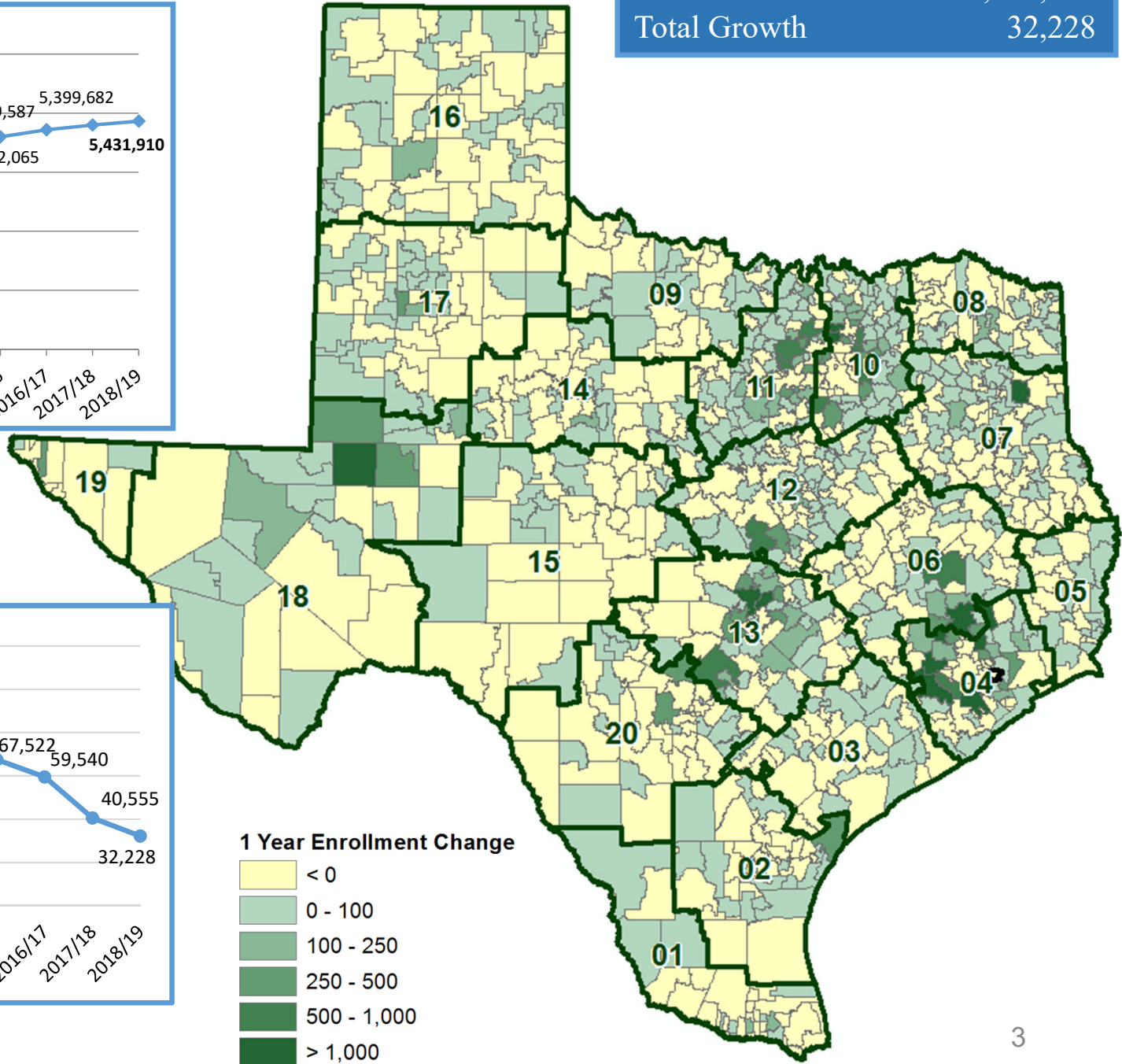
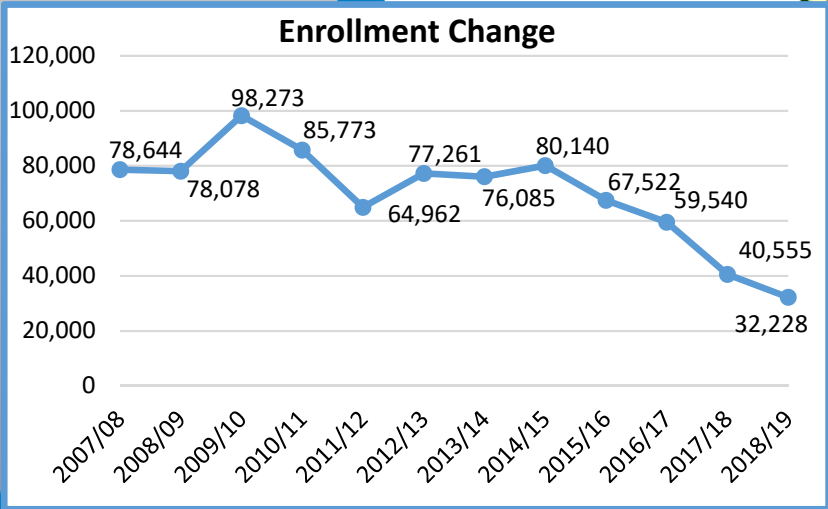
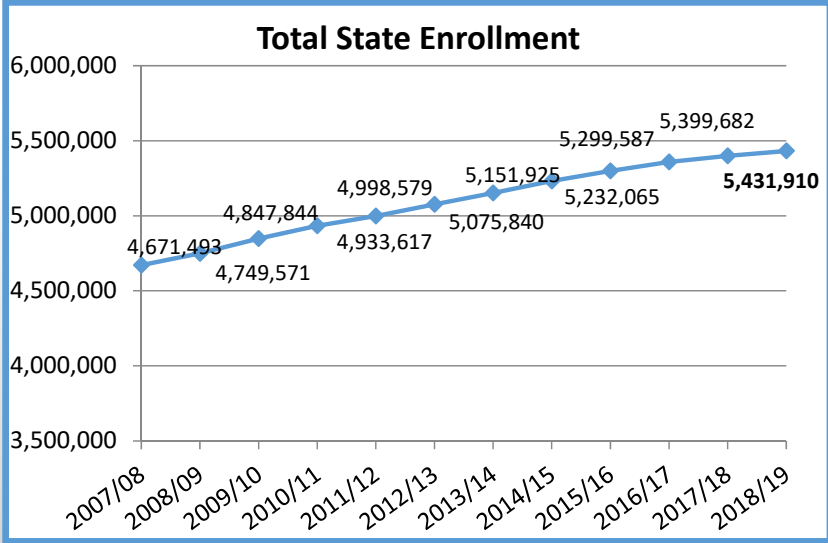
Annual Home Starts





Texas Enrollment Trends

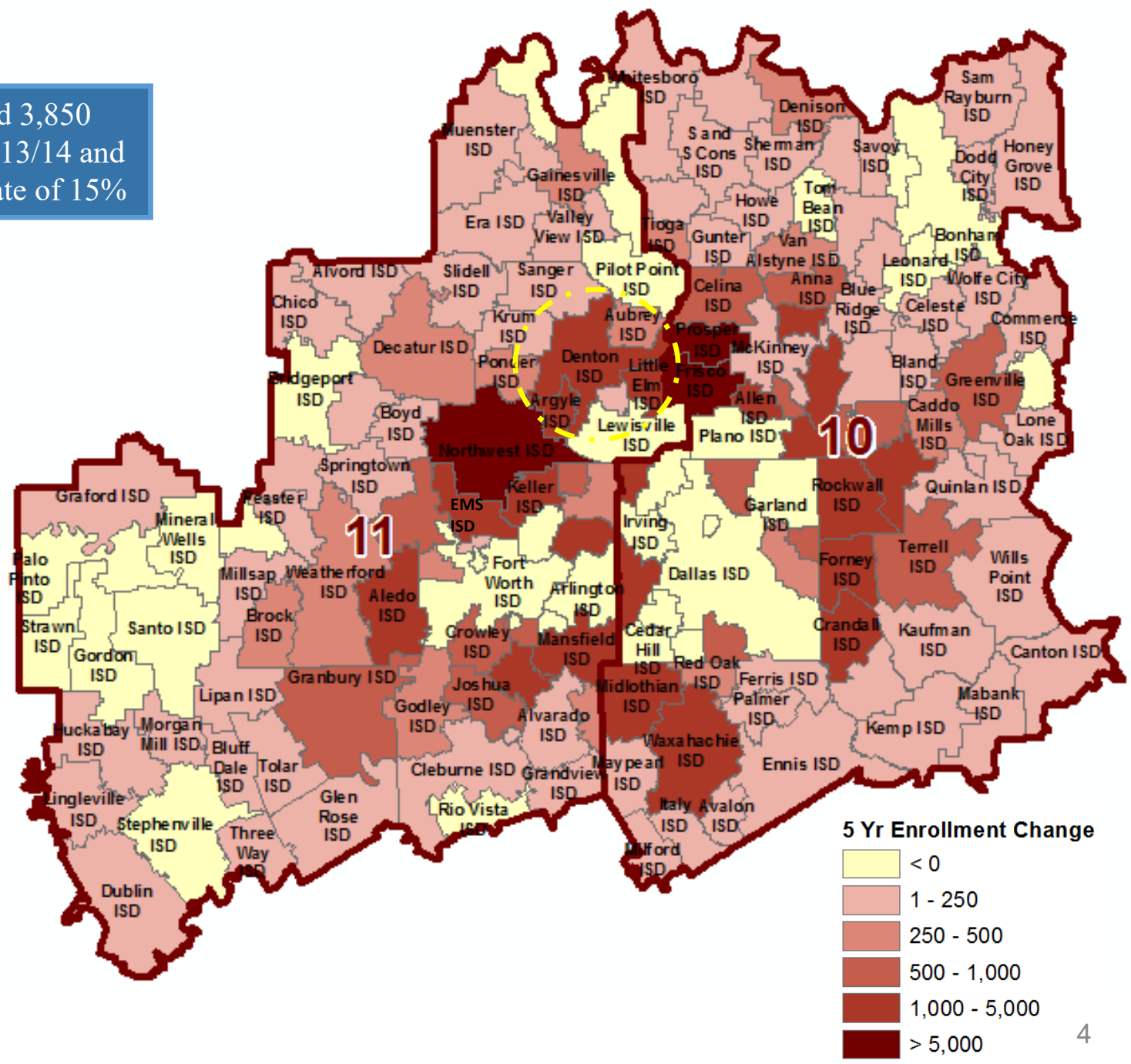
2018/19 State Enrollment
Total Enrollment 5,431,910
Total Growth 32,228





Region 10 & 11 Enrollment Trends

Denton ISD added 3,850 students between 2013/14 and 2018/19, a growth rate of 15%





Region 10 & 11 Enrollment Trends

Ranked by 5-year Change

Region 10

Rank	District	2013/14 Enrollment	2018/19 Enrollment	5-YEAR Change (13/14-18/19)	5-YEAR PCT Growth
1	Frisco ISD	46,053	60,182	14,129	30.7%
2	Prosper ISD	6,413	14,348	7,935	123.7%
3	Wylie ISD (Collin)	13,726	16,527	2,801	20.4%
4	Forney ISD	8,648	11,133	2,485	28.7%
5	Rockwall ISD	14,626	16,587	1,961	13.4%
6	Midlothian ISD	7,719	9,389	1,670	21.6%
7	Coppell ISD	11,364	12,925	1,561	13.7%
8	Grand Prairie ISD	27,740	29,200	1,460	5.3%
9	Melissa ISD	1,895	3,163	1,268	66.9%
10	Princeton ISD	3,623	4,887	1,264	34.9%
11	Crandall ISD	3,166	4,420	1,254	39.6%
12	Allen ISD	20,382	21,557	1,175	5.8%
13	Royse City ISD	5,015	6,169	1,154	23.0%
14	Waxahachie ISD	7,814	8,937	1,123	14.4%
15	Anna ISD	2,597	3,597	1,000	38.5%
16	Richardson ISD	38,283	39,108	825	2.2%
17	Community ISD	1,680	2,385	705	42.0%
18	Greenville ISD	4,804	5,492	688	14.3%
19	Celina ISD	2,075	2,722	647	31.2%
20	Lovejoy ISD	3,739	4,272	533	14.3%

Region 11

Rank	DISTRICT	2013/14 Enrollment	2018/19 Enrollment	5-YEAR CHANGE (13/14-18/19)	5-YEAR PCT Growth
1	Northwest ISD	18,950	24,141	5,191	27.4%
2	Denton ISD	26,312	30,169	3,857	14.7%
3	Mansfield ISD	32,779	35,293	2,514	7.7%
4	Eagle Mt-Saginaw ISD	18,197	20,054	1,857	10.2%
5	Burleson ISD	10,744	12,447	1,703	15.9%
6	Hurst-Euless-Bedford ISD	22,180	23,686	1,506	6.8%
7	Keller ISD	33,763	35,088	1,325	3.9%
8	Aledo ISD	4,874	6,129	1,255	25.7%
9	Little Elm ISD	6,637	7,769	1,132	17.1%
10	Argyle ISD	1,983	3,061	1,078	54.4%
11	Granbury ISD	6,658	7,346	688	10.3%
12	Everman ISD	5,515	6,174	659	11.9%
13	Crowley ISD	15,080	15,728	648	4.3%
14	Azle ISD	5,988	6,578	590	9.9%
15	Joshua ISD	5,004	5,585	581	11.6%
16	Carroll ISD	7,812	8,366	554	7.1%
17	Brock ISD	1,048	1,510	462	44.1%
18	Godley ISD	1,729	2,181	452	26.1%
19	Decatur ISD	2,982	3,413	431	14.5%
20	Grapevine-Colleyville ISD	13,523	13,941	418	3.1%





DFW New Home Ranking Report

ISD Ranked by Annual Closings – 1Q19

Rank	District Name	Annual Starts	Annual Closings	VDL	Future
1	Prosper ISD	2,753	2,667	4,655	21,922
2	Denton ISD**	2,462	2,121	4,624	31,423*
3	Frisco ISD	2,232	2,086	4,299	5,355
4	Northwest ISD	1,851	1,844	2,987	22,325
5	Dallas ISD	1,730	1,503	2,089	5,672
6	Little Elm ISD	1,344	1,365	1,238	2,435
7	Eagle Mt.-Saginaw ISD	1,572	1,336	1,975	19,038
8	Forney ISD	1,116	1,237	2,122	15,030
9	Lewisville ISD	1,328	1,160	1,992	3,478
10	Crowley ISD	921	926	1,390	13,826
11	Rockwall ISD	763	879	1,981	9,804
12	Wylie ISD	779	850	865	3,670
13	Mansfield ISD	893	803	1,326	7,349
14	McKinney ISD	800	728	2,022	8,362
15	Midlothian ISD	611	685	1,277	19,439
16	Princeton ISD	756	671	646	8,276
17	Royse City ISD	782	650	1,236	10,173
18	Aledo ISD	561	646	1,315	14,722
19	Waxahachie ISD	649	630	949	20,653
20	Allen ISD	733	616	1,087	1,072

*Based on additional Templeton Demographics housing research

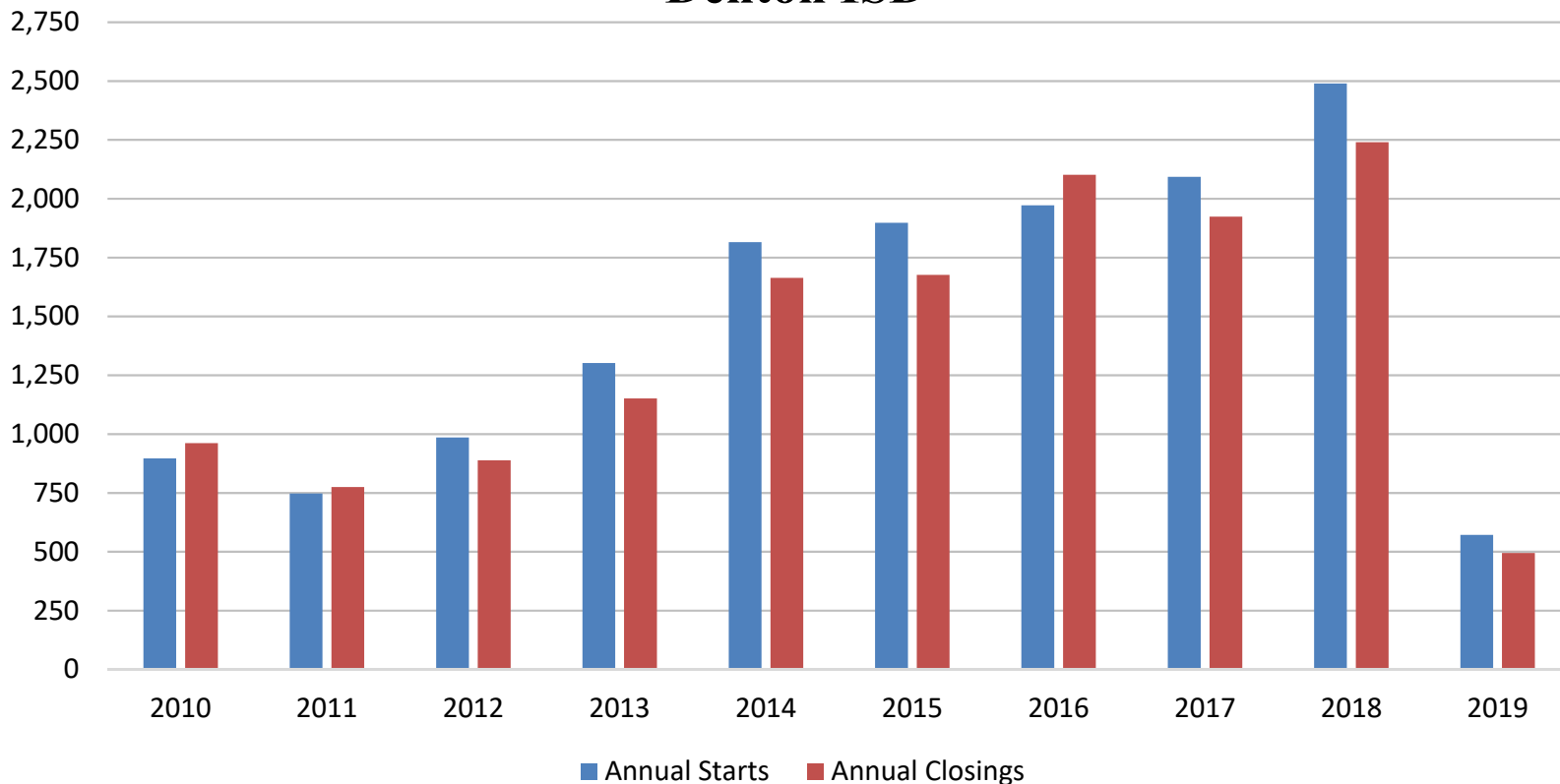
Table **DOES include age restricted communities





New Housing Activity

Denton ISD



Starts	2013	2014	2015	2016	2017	2018	2019
1Q	191	434	335	532	447	555	572
2Q	426	466	451	480	536	801	
3Q	357	457	607	543	608	563	
4Q	328	459	505	417	502	571	
Total	1,302	1,816	1,898	1,972	2,093	2,490	572

Closings	2013	2014	2015	2016	2017	2018	2019
1Q	248	315	340	461	436	561	495
2Q	272	383	474	556	450	563	
3Q	327	531	450	544	559	561	
4Q	305	435	413	541	479	555	
Total	1,152	1,664	1,677	2,102	1,924	2,240	495

- Within the district there were more than 570 new home starts in the first quarter of 2019, the most 1st quarter starts in more than 12 years
- Closings slowed slightly as builders focused on starting homes on newly delivered lots





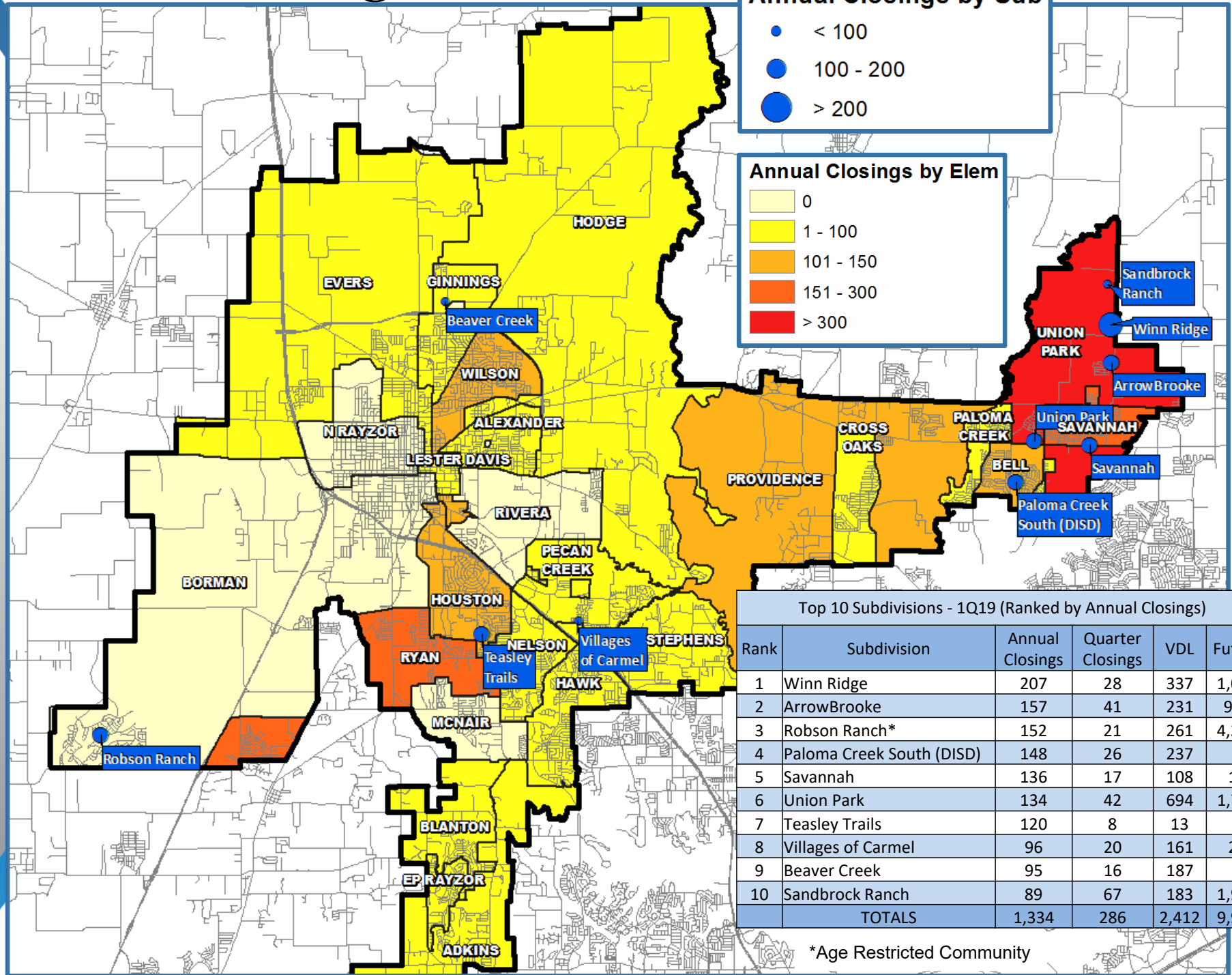
Annual Closing Distribution

Annual Closings by Sub

- < 100
- 100 - 200
- > 200

Annual Closings by Elem

- 0
- 1 - 100
- 101 - 150
- 151 - 300
- > 300



Top 10 Subdivisions - 1Q19 (Ranked by Annual Closings)

Rank	Subdivision	Annual Closings	Quarter Closings	VDL	Future
1	Winn Ridge	207	28	337	1,079
2	ArrowBrooke	157	41	231	973
3	Robson Ranch*	152	21	261	4,263
4	Paloma Creek South (DISD)	148	26	237	0
5	Savannah	136	17	108	16
6	Union Park	134	42	694	1,724
7	Teasley Trails	120	8	13	0
8	Villages of Carmel	96	20	161	25
9	Beaver Creek	95	16	187	0
10	Sandbrock Ranch	89	67	183	1,906
TOTALS		1,334	286	2,412	9,986

*Age Restricted Community





New Home Activity by Elementary Zone

Elementary	Annual Starts	Quarter Starts	Annual Closings	Quarter Closings	Under Construction	Inventory	Vacant Dev. Lots	Future
ADKINS	65	21	90	21	24	43	92	84
ALEXANDER	16	0	19	5	4	17	31	487
BELL	123	15	148	26	29	51	237	0
BLANTON	69	19	72	26	16	32	199	0
BORMAN	0	0	0	0	0	0	0	9,000
CROSS OAKS	0	0	5	0	0	0	0	439
EP RAYZOR	5	2	8	2	2	4	4	0
EVERS	34	21	29	5	21	25	416	1,199
GINNINGS	101	6	95	16	30	58	197	620
HAWK	12	1	13	3	1	6	2	169
HODGE	7	0	8	2	0	8	33	3,171
HOUSTON	105	33	120	8	55	60	13	20
MCNAIR	0	0	0	0	0	0	0	0
N RAYZOR	0	0	0	0	1	1	6	150
NELSON	2	0	5	1	0	0	0	0
PALOMA CREEK	34	14	10	5	15	28	182	0
PECAN CREEK	96	6	96	20	36	44	161	435
PROVIDENCE	211	22	150	23	57	109	478	3,157
RIVERA	0	0	0	0	0	0	0	342
RYAN	225	45	189	66	103	126	74	627
SAVANNAH	139	28	155	23	43	88	179	16
STEPHENS	51	14	43	12	23	35	174	98
UNION PARK	857	230	601	179	245	477	1,517	6,665
WILSON	113	37	106	24	42	60	124	53
GRAND TOTAL	2,265	514	1,962	467	747	1,272	4,119	26,732

*Table does NOT include age restricted communities



Highest activity in the category



Second highest activity in the category



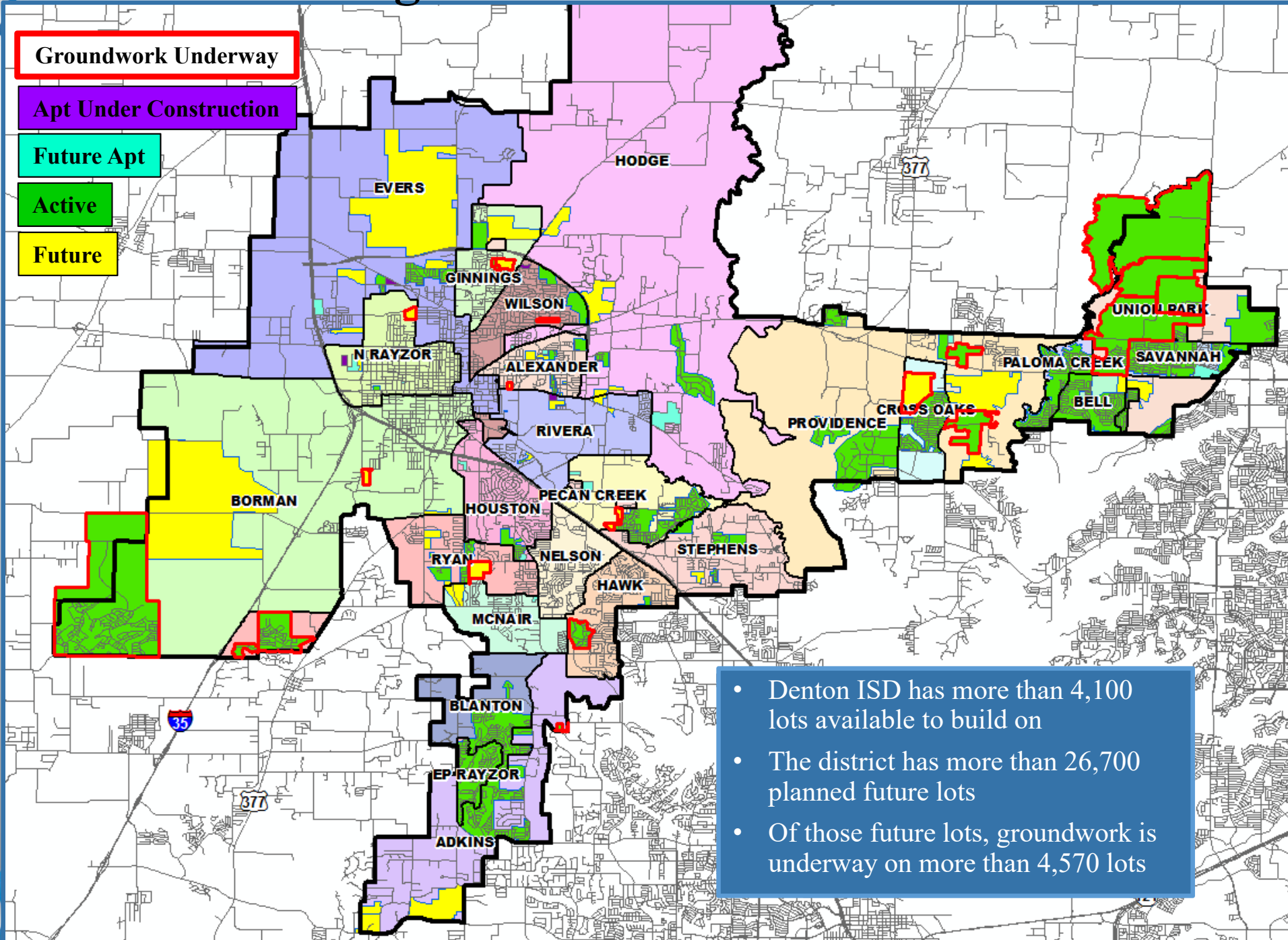
Third highest activity in the category





District Housing Overview

- Groundwork Underway
- Apt Under Construction
- Future Apt
- Active
- Future

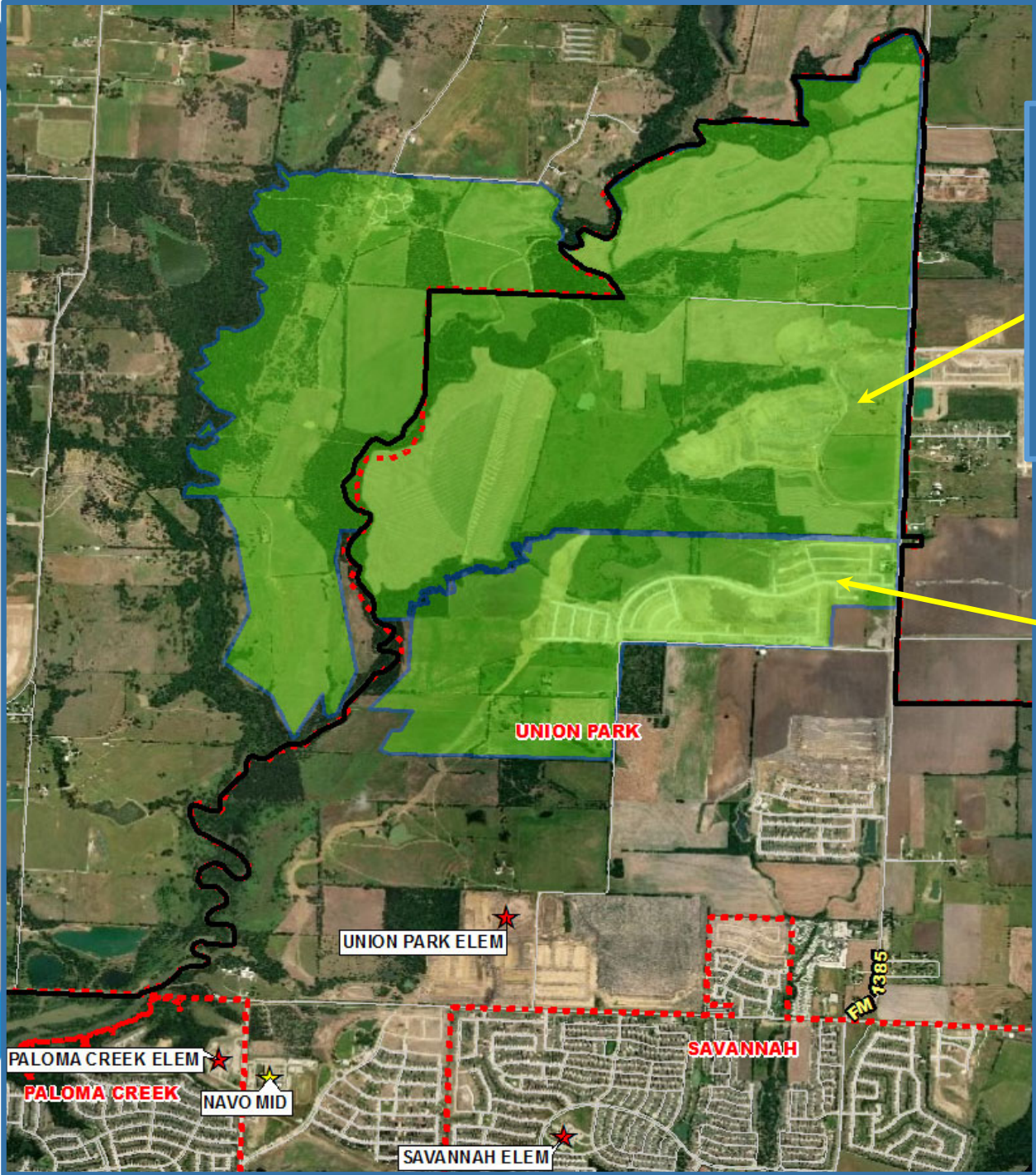


- Denton ISD has more than 4,100 lots available to build on
- The district has more than 26,700 planned future lots
- Of those future lots, groundwork is underway on more than 4,570 lots





Residential Activity



- ### Sandbrock Ranch
- 2,300 total lots
 - 1,906 future lots
 - 183 vacant developed lots
 - 89 homes occupied
 - 54 homes under construction
 - Started 211 homes in the last 12 months
 - Closed 67 homes in 1Q19
 - Building 200 – 250 homes a year
 - \$230K - \$335K

- ### Winn Ridge
- 1,739 total lots
 - 1,079 future lots
 - 337 vacant developed lots
 - 243 homes occupied
 - 42 homes under construction
 - Building 200 homes a year
 - \$230K - \$335K





Residential Activity

- Union Park**
- 3,016 total lots that will impact district enrollment
 - 1,724 future lots
 - 694 vacant developed lots
 - 464 homes occupied
 - Started 90 homes in 1Q19 with large lot delivery
 - Building 175 - 200 homes a year
 - \$270K - \$500K



- ArrowBrooke**
- 1,700 total lots
 - 973 future lots
 - 231 vacant developed lots
 - 387 homes occupied
 - 56 homes under construction
 - Building 175-200 homes per year
 - \$260K - \$340K





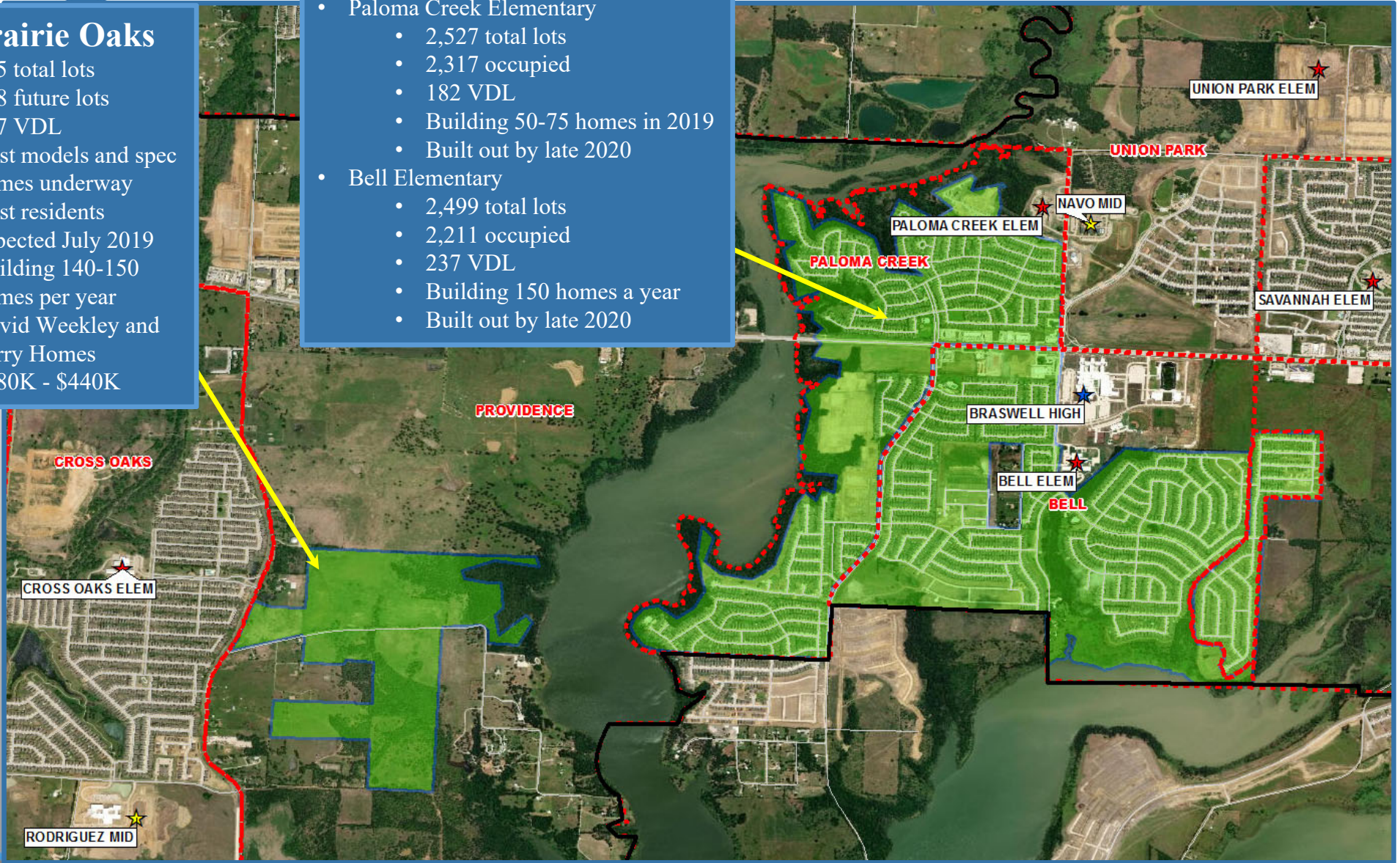
Residential Activity

Prairie Oaks

- 985 total lots
- 648 future lots
- 337 VDL
- First models and spec homes underway
- First residents expected July 2019
- Building 140-150 homes per year
- David Weekley and Perry Homes
- \$280K - \$440K

Paloma Creek

- Paloma Creek Elementary
 - 2,527 total lots
 - 2,317 occupied
 - 182 VDL
 - Building 50-75 homes in 2019
 - Built out by late 2020
- Bell Elementary
 - 2,499 total lots
 - 2,211 occupied
 - 237 VDL
 - Building 150 homes a year
 - Built out by late 2020





Residential Activity

Discovery Park Apartments

- 289 market rate units under construction
- Student-driven housing
- First units leasing summer 2019

Palladium Denton

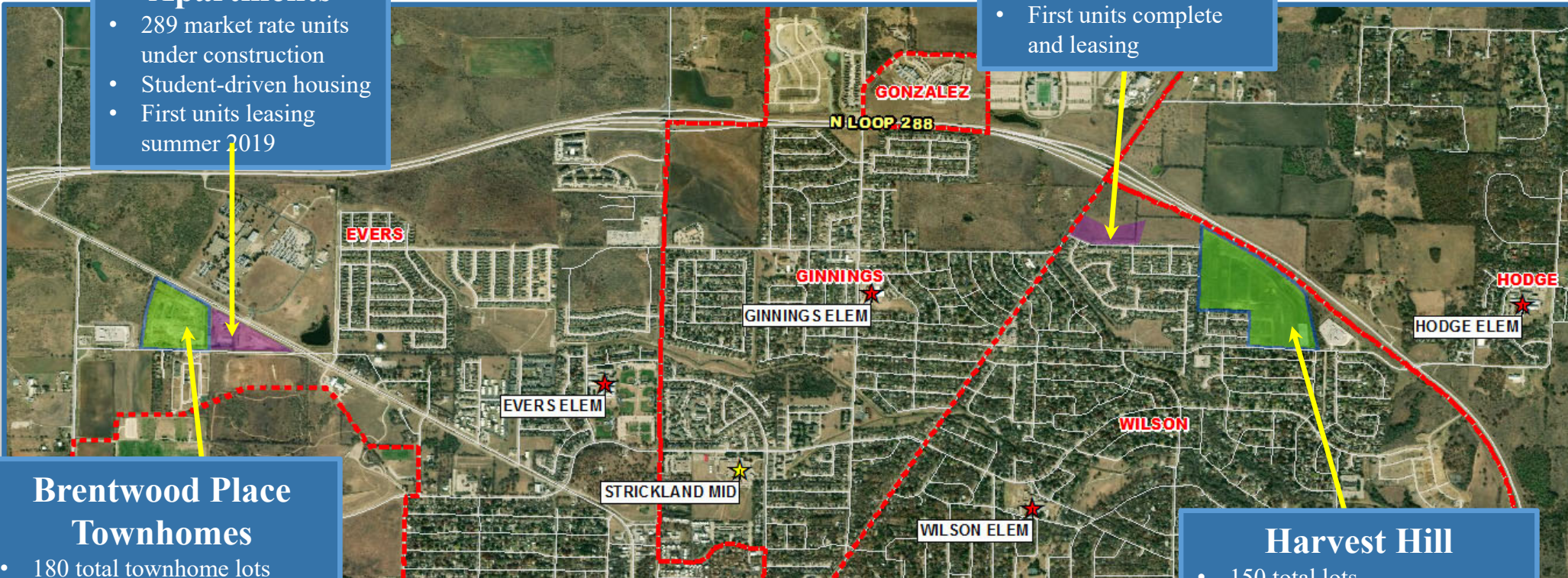
- 150 total units under construction
- 93 tax-credit units
- First units complete and leasing

Brentwood Place Townhomes

- 180 total townhome lots
- 156 VDL
- 21 homes under construction
- First residents by fall 2019
- \$195K - \$205K

Harvest Hill

- 150 total lots
- 115 VDL
- 35 homes under construction
- First residents by June 2019
- Building 75 homes in 2019
- DR Horton
- \$255K - \$322K





TEA Transfer Report

Transfers In From	2013/14	2014/15	2015/16	2016/17	2017/18	2018/19	5 Yr Change
Argyle ISD	11	8	11	8	11	11	0
Aubrey ISD	16	6	3	11	26	36	20
Krum ISD	25	24	15	20	19	17	-8
Lake Dallas ISD	39	36	22	20	17	20	-19
Lewisville ISD	11	7	8	11	19	15	4
Little Elm ISD	12	3	3	3	14	18	6
Sanger ISD	23	18	11	10	21	13	-10
Total Transfers In*	179	147	105	120	166	176	-3

Transfers Out To	2013/14	2014/15	2015/16	2016/17	2017/18	2018/19	5 Yr Change
Argyle ISD	114	110	99	78	87	83	-31
Aubrey ISD	74	79	98	93	94	102	28
Carrollton-Farmers Branch ISD	15	8	3	10	3	23	8
Coppell ISD	3	0	0	3	3	10	7
Frisco ISD	67	76	79	75	90	110	43
Grapevine-Colleyville ISD	6	8	8	15	16	23	17
Hallsville ISD	0	0	0	0	0	24	24
Krum ISD	24	33	27	25	25	23	-1
Lake Dallas ISD	127	164	198	226	257	301	174
Leadership Prep School	8	8	11	25	36	57	49
Lewisville ISD	108	105	117	133	139	195	87
Little Elm ISD	44	39	43	51	61	59	15
North Texas Collegiate Academy	206	155	129	134	214	225	19
Northwest ISD	8	10	16	22	18	26	18
Ponder ISD	23	17	15	21	25	25	2
Premier High Schools	14	10	25	27	33	25	11
Prosper ISD	40	34	41	50	42	45	5
Texas College Preparatory Academie	408	435	549	599	672	783	375
Winfree Academy Charter Schools	223	41	23	14	21	14	-209
Total Transfers Out*	1,647	1,430	1,612	1,727	1,974	2,293	646

*Totals include additional districts per TEA rounding rules





Ten Year Forecast

By Grade Level

Year (Oct.)	EE/PRE-K	K	1st	2nd	3rd	4th	5th	6th	7th	8th	9th	10th	11th	12th	Total	Total Growth	Percent
2014/15	1,063	2,068	2,099	2,178	2,166	2,082	2,133	2,075	2,052	1,973	2,042	1,873	1,665	1,551	27,020		
2015/16	1,143	1,954	2,143	2,088	2,190	2,152	2,115	2,154	2,128	2,094	2,091	1,985	1,756	1,566	27,559	539	2.0%
2016/17	1,128	2,066	2,044	2,194	2,181	2,231	2,219	2,159	2,202	2,175	2,293	2,084	1,967	1,685	28,628	1,069	3.9%
2017/18	1,141	2,081	2,100	2,119	2,230	2,251	2,300	2,264	2,232	2,205	2,346	2,245	2,018	1,887	29,419	791	2.8%
2018/19	1,147	2,145	2,117	2,168	2,134	2,277	2,291	2,331	2,327	2,306	2,398	2,302	2,199	1,973	30,115	696	2.4%
2019/20	1,147	2,184	2,232	2,193	2,248	2,200	2,347	2,329	2,398	2,394	2,484	2,348	2,204	2,150	30,858	743	2.5%
2020/21	1,147	2,353	2,286	2,316	2,232	2,316	2,254	2,391	2,379	2,434	2,607	2,424	2,246	2,152	31,537	679	2.2%
2021/22	1,147	2,426	2,455	2,387	2,359	2,306	2,392	2,295	2,462	2,423	2,667	2,554	2,326	2,186	32,385	848	2.7%
2022/23	1,147	2,504	2,506	2,545	2,432	2,436	2,366	2,438	2,330	2,518	2,572	2,609	2,448	2,277	33,128	743	2.3%
2023/24	1,147	2,614	2,594	2,608	2,627	2,496	2,511	2,418	2,478	2,364	2,707	2,513	2,499	2,389	33,965	837	2.5%
2024/25	1,147	2,671	2,698	2,682	2,663	2,695	2,567	2,561	2,465	2,536	2,539	2,643	2,408	2,438	34,713	748	2.2%
2025/26	1,147	2,712	2,729	2,743	2,737	2,725	2,745	2,628	2,598	2,520	2,718	2,471	2,532	2,353	35,358	645	1.9%
2026/27	1,147	2,733	2,799	2,798	2,802	2,795	2,786	2,817	2,673	2,650	2,710	2,660	2,368	2,470	36,208	850	2.4%
2027/28	1,147	2,792	2,818	2,853	2,833	2,865	2,860	2,853	2,868	2,728	2,837	2,622	2,547	2,313	36,936	728	2.0%
2028/29	1,147	2,750	2,868	2,890	2,910	2,908	2,948	2,933	2,901	2,929	2,927	2,763	2,511	2,486	37,871	935	2.5%

*Yellow box = largest grade per year

*Green box = second largest grade per year

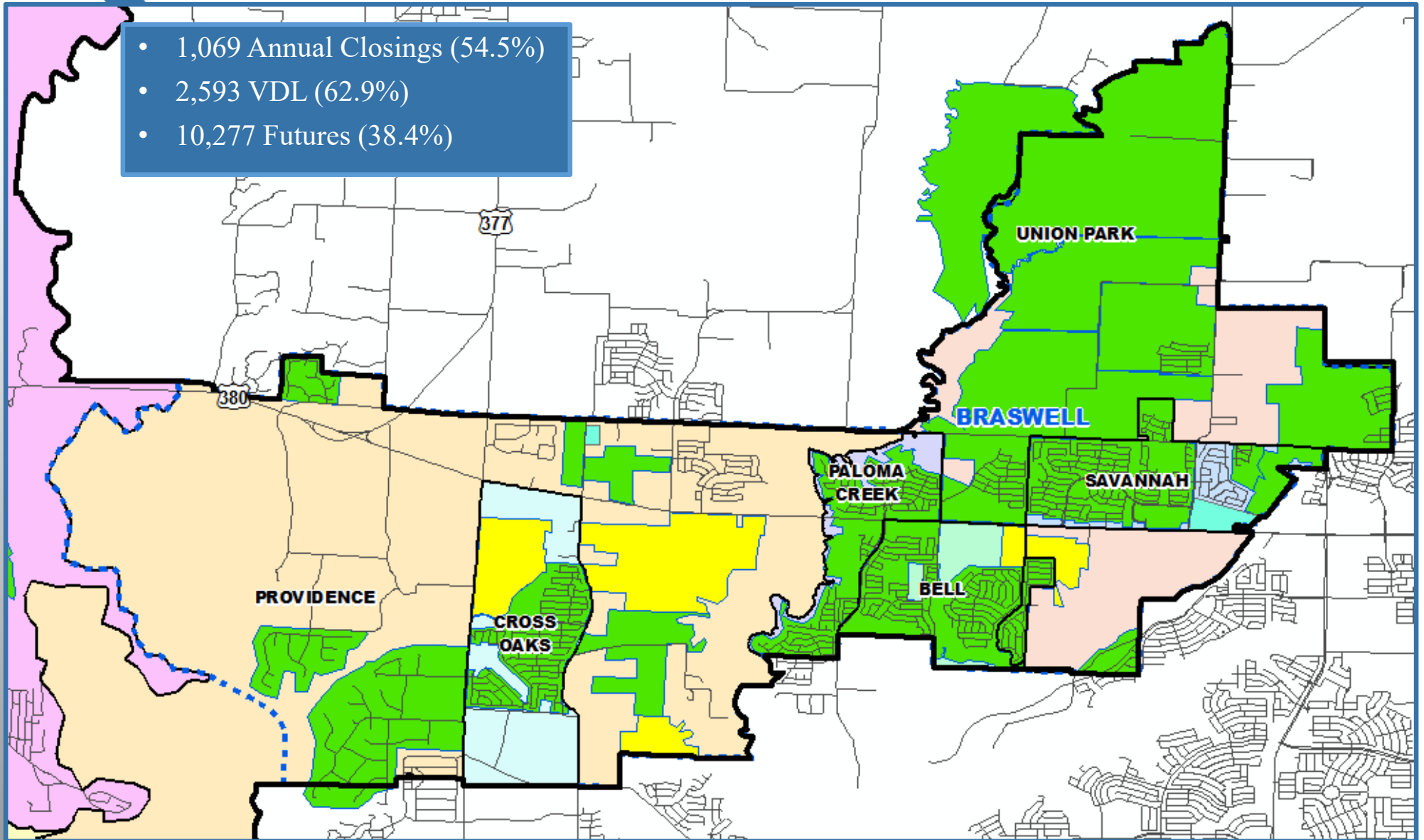
- Denton ISD will enroll more than 31,000 students by 2020
- 5 year growth = 3,850 students
- 2023/24 enrollment = 33,965 students
- 10 year growth = 7,756 students
- 2028/29 enrollment = 37,871 students





Braswell High School Zone

- 1,069 Annual Closings (54.5%)
- 2,593 VDL (62.9%)
- 10,277 Futures (38.4%)



Vertical Zones- Ten Year Forecast

Braswell High School

Campus Name	Capacity	HISTORY	Fall	ENROLLMENT PROJECTIONS									
		2017/18	2018/19	2019/20	2020/21	2021/22	2022/23	2023/24	2024/25	2025/26	2026/27	2027/28	2028/29
Bell Elementary School	740	801	815	648	660	691	690	686	698	708	713	714	726
Cross Oaks Elementary School	740	724	728	732	748	747	766	758	766	770	773	772	764
Paloma Creek Elementary School	740	659	784	532	540	558	561	569	573	567	559	558	559
Providence Elementary School	740	416	454	529	572	641	695	753	815	858	887	920	953
Savannah Elementary School	740	719	733	747	757	770	778	793	776	770	769	772	765
Union Park Elementary School	741	0	0	549	702	851	1,008	1,230	1,436	1,655	1,834	1,968	2,086
ELEMENTARY TOTALS	4,441	3,319	3,514	3,737	3,979	4,258	4,498	4,789	5,064	5,328	5,535	5,704	5,853
Elementary Absolute Change		315	195	223	242	279	240	291	275	264	207	169	149
Elementary Percent Change		10.49%	5.88%	6.35%	6.48%	7.01%	5.64%	6.47%	5.74%	5.21%	3.89%	3.05%	2.61%
Navo Middle School	1,181	937	989	1,061	1,126	1,162	1,193	1,220	1,307	1,345	1,424	1,472	1,548
Rodriguez Middle School	1,323	661	825	855	917	907	991	1,037	1,108	1,163	1,246	1,332	1,414
MIDDLE SCHOOL TOTALS	2,504	1,598	1,814	1,916	2,043	2,069	2,184	2,257	2,415	2,508	2,670	2,804	2,962
Middle School Absolute Change		226	216	102	127	26	115	73	158	93	162	134	158
Middle School Percent Change		16.47%	13.52%	5.62%	6.63%	1.27%	5.56%	3.34%	7.00%	3.85%	6.46%	5.02%	5.63%
Braswell High School	2,398	1,756	2,005	2,295	2,446	2,726	2,926	3,051	3,128	3,188	3,322	3,434	3,620
HIGH SCHOOL TOTALS	2,398	1,756	2,005	2,295	2,446	2,726	2,926	3,051	3,128	3,188	3,322	3,434	3,620
High School Absolute Change		536	249	290	151	280	200	125	77	60	134	112	186
High School Percent Change		43.93%	14.18%	14.46%	6.58%	11.45%	7.34%	4.27%	2.52%	1.92%	4.20%	3.37%	5.42%
BRASWELL ZONE TOTALS	9,343	6,673	7,333	7,948	8,468	9,053	9,608	10,097	10,607	11,024	11,527	11,942	12,435
Braswell Zone Absolute Change		1,077	660	615	520	585	555	489	510	417	503	415	493
Braswell Zone Percent Change		19.20%	9.90%	8.40%	6.50%	6.90%	6.10%	5.10%	5.10%	3.90%	4.60%	3.60%	4.10%

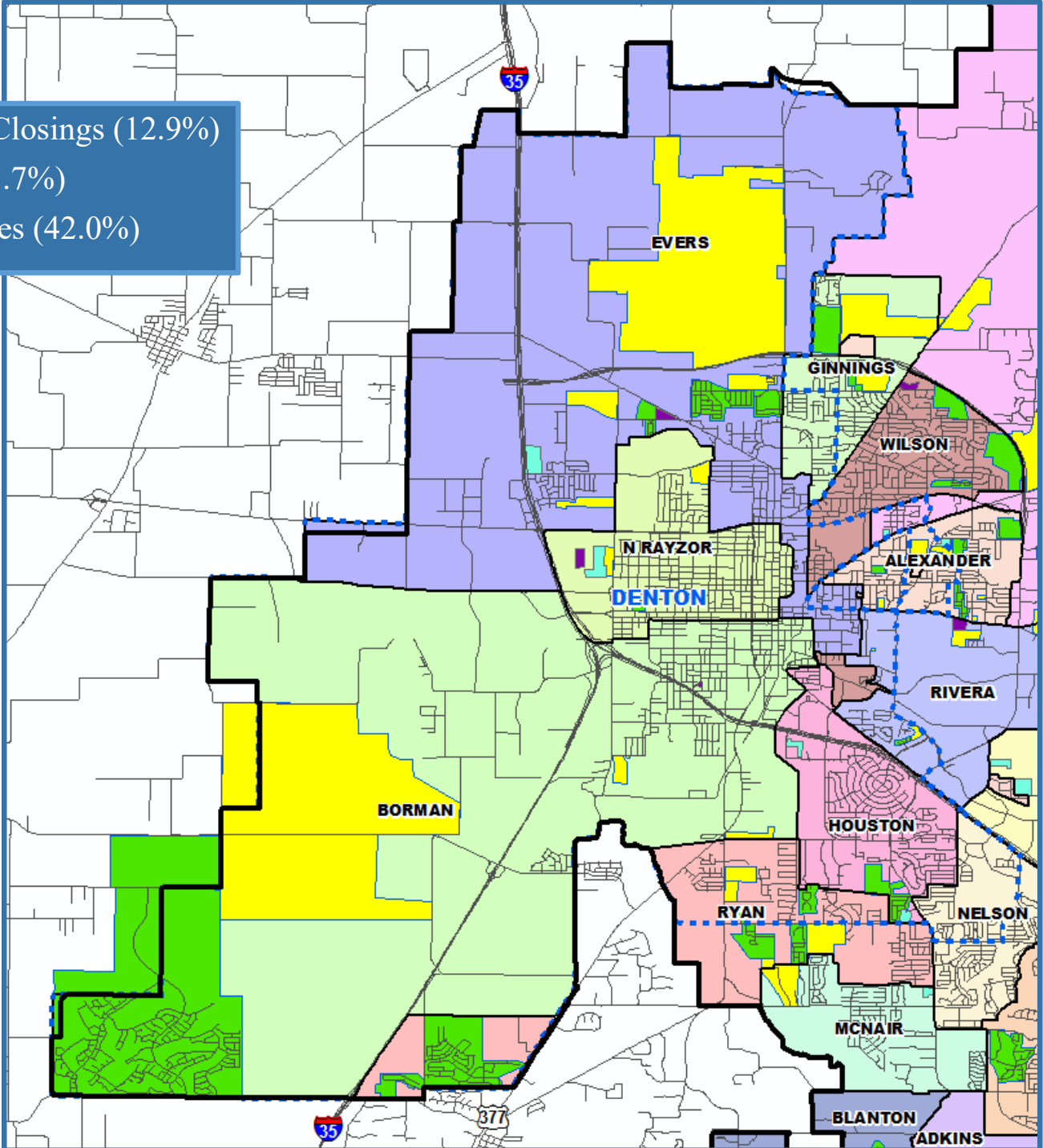
*Yellow box = over stated capacity





Denton High School Zone

- 253 Annual Closings (12.9%)
- 483 VDL (11.7%)
- 11,234 Futures (42.0%)



Vertical Zones- Ten Year Forecast

Denton High School

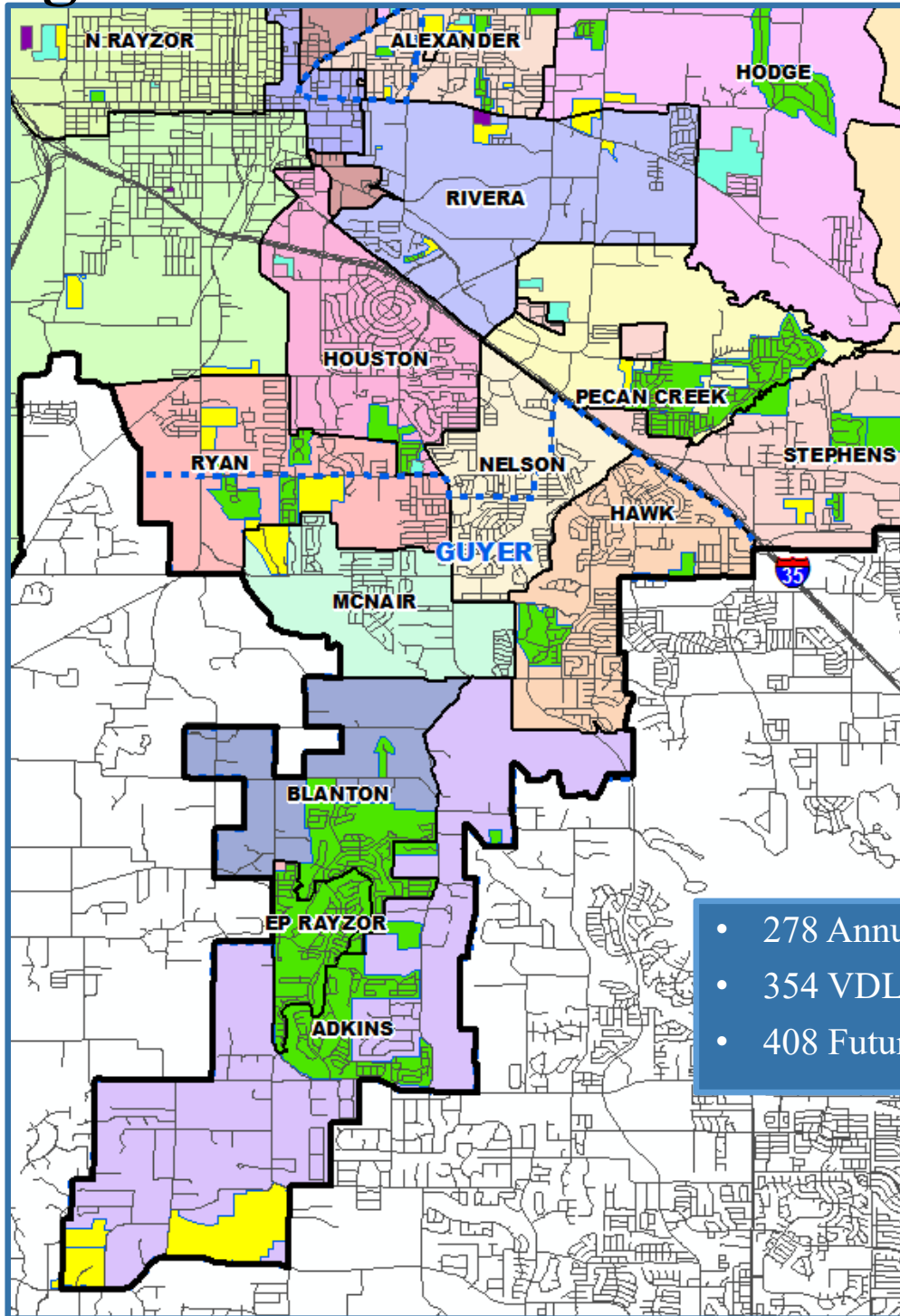
Campus Name	Capacity	HISTORY	FALL	ENROLLMENT PROJECTIONS									
		2017/18	2018/19	2019/20	2020/21	2021/22	2022/23	2023/24	2024/25	2025/26	2026/27	2027/28	2028/29
Alexander Elementary School	740	641	579	595	599	624	637	661	674	681	679	676	662
Borman Elementary School	740	469	425	419	435	478	503	539	580	623	662	694	736
Evers Park Elementary School	740	574	579	606	610	660	694	746	788	836	871	916	947
Sam Houston Elementary School	740	584	580	597	616	615	624	643	649	642	637	633	635
Newton Rayzor Elementary School	740	624	637	644	663	667	680	704	706	703	700	701	706
Ryan Elementary School	740	672	639	663	716	746	769	807	823	824	822	813	805
ELEMENTARY TOTALS	4,440	3,564	3,439	3,524	3,639	3,790	3,907	4,100	4,220	4,309	4,371	4,433	4,491
Elementary Absolute Change		34	-125	85	115	151	117	193	120	89	62	62	58
Elementary Percent Change		0.96%	-3.51%	2.47%	3.26%	4.15%	3.09%	4.94%	2.93%	2.11%	1.44%	1.42%	1.31%
Calhoun Middle School	1,268	729	721	719	723	726	748	726	781	809	876	911	953
McMath Middle School	1,181	781	774	810	805	833	840	878	923	952	1,017	1,071	1,106
MIDDLE SCHOOL TOTALS	2,449	1,510	1,495	1,529	1,528	1,559	1,588	1,604	1,704	1,761	1,893	1,982	2,059
Middle School Absolute Change		45	-15	34	-1	31	29	16	100	57	132	89	77
Middle School Percent Change		3.07%	-0.99%	2.27%	-0.07%	2.03%	1.86%	1.01%	6.23%	3.35%	7.50%	4.70%	3.88%
Denton High School	2,460	2,030	1,999	1,987	2,018	1,971	2,049	2,080	2,070	2,158	2,179	2,258	2,379
HIGH SCHOOL TOTALS	2,460	2,030	1,999	1,987	2,018	1,971	2,049	2,080	2,070	2,158	2,179	2,258	2,379
High School Absolute Change		-22	-31	-12	31	-47	78	31	-10	88	21	79	121
High School Percent Change		-1.07%	-1.53%	-0.60%	1.56%	-2.33%	3.96%	1.51%	-0.48%	4.25%	0.97%	3.63%	5.36%
Denton High Zone Totals	9,349	7,104	6,933	7,040	7,185	7,320	7,544	7,784	7,994	8,228	8,443	8,673	8,929
Denton Zone Absolute Change		62	-171	107	145	135	224	240	210	234	215	230	256
Denton Zone Percent Change		0.90%	-2.41%	1.54%	2.06%	1.88%	3.06%	3.18%	2.70%	2.93%	2.61%	2.72%	2.95%

*Yellow box = over stated capacity





Guyer High School Zone



- 278 Annual Closings (14.2%)
- 354 VDL (8.6%)
- 408 Futures (1.5%)



Vertical Zones- Ten Year Forecast

Guyer High School

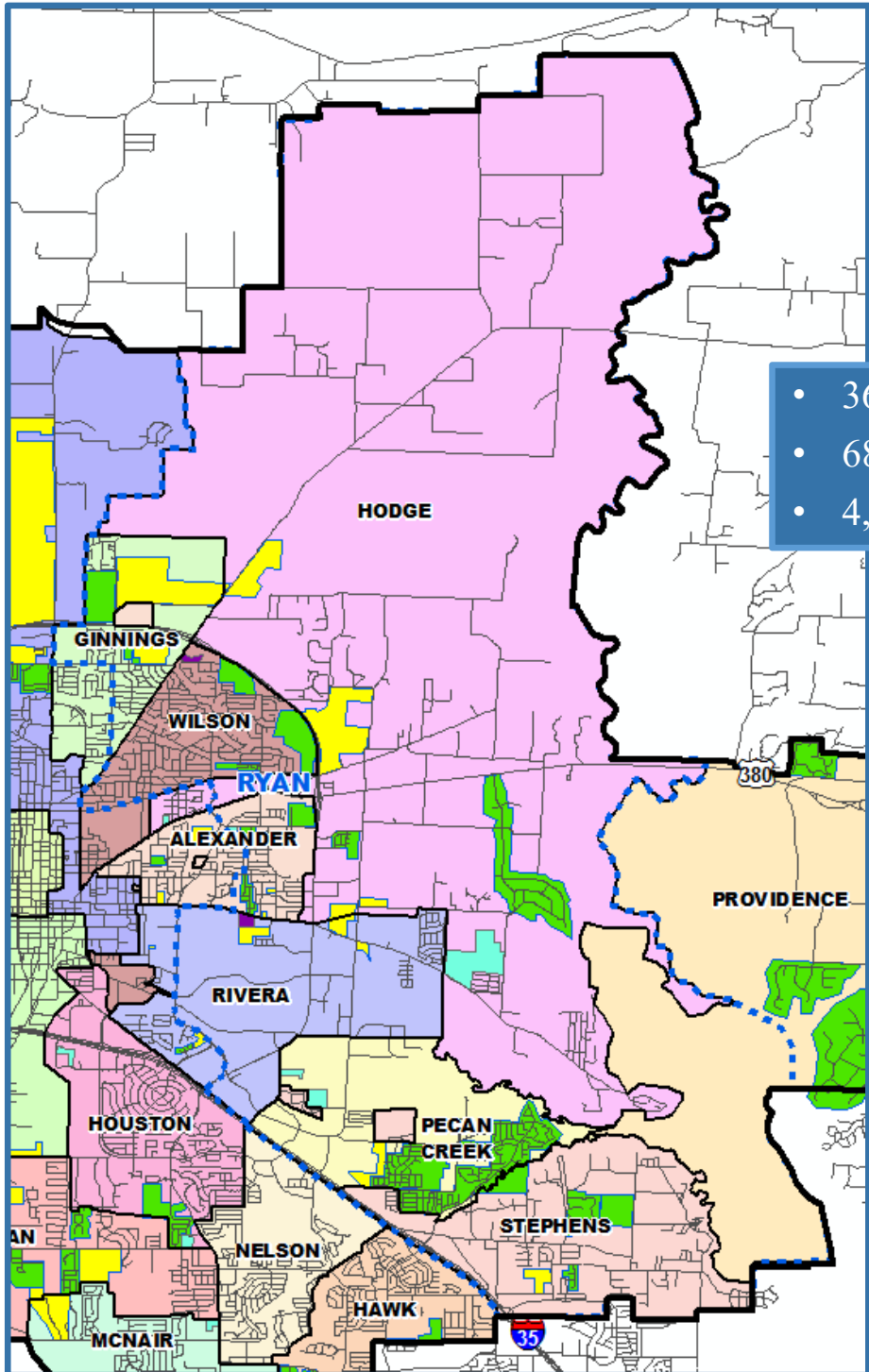
Campus Name	Capacity	2017/18	FALL	ENROLLMENT PROJECTIONS									
			2018/19	2019/20	2020/21	2021/22	2022/23	2023/24	2024/25	2025/26	2026/27	2027/28	2028/29
Adkins Elementary School	740	383	402	416	420	420	411	417	427	436	445	451	457
Blanton Elementary School	740	489	499	470	472	454	474	469	480	478	474	473	468
E P Rayzor Elementary School	740	395	388	375	366	361	371	370	370	372	368	363	367
Hawk Elementary School	740	671	648	635	620	632	636	653	643	639	638	640	645
McNair Elementary School	740	533	554	534	517	525	517	532	551	560	572	581	585
Nelson Elementary School	740	634	653	656	647	639	626	636	633	630	624	631	627
ELEMENTARY TOTALS	4,440	3,105	3,144	3,086	3,042	3,031	3,035	3,077	3,104	3,115	3,121	3,139	3,149
Elementary Absolute Change		-107	39	-58	-44	-11	4	42	27	11	6	18	10
Elementary Percent Change		-3.33%	1.26%	-1.84%	-1.43%	-0.36%	0.13%	1.38%	0.88%	0.35%	0.19%	0.58%	0.32%
Crownover Middle School	1,181	927	959	932	911	845	846	796	828	813	847	843	848
Harpool Middle School	1,181	990	911	938	909	917	873	835	788	794	801	828	842
MIDDLE SCHOOL TOTALS	2,362	1,917	1,870	1,870	1,820	1,762	1,719	1,631	1,616	1,607	1,648	1,671	1,690
Middle School Absolute Change		-12	-47	0	-50	-58	-43	-88	-15	-9	41	23	19
Middle School Percent Change		-0.62%	-2.45%	0.00%	-2.67%	-3.19%	-2.44%	-5.12%	-0.92%	-0.56%	2.55%	1.40%	1.14%
John Guyer High School	3,200	2,524	2,626	2,626	2,628	2,661	2,593	2,580	2,503	2,437	2,360	2,310	2,299
HIGH SCHOOL TOTALS	3,200	2,524	2,626	2,626	2,628	2,661	2,593	2,580	2,503	2,437	2,360	2,310	2,299
High School Absolute Change		-19	102	0	2	33	-68	-13	-77	-66	-77	-50	-11
High School Percent Change		-0.75%	4.04%	0.00%	0.08%	1.26%	-2.56%	-0.50%	-2.98%	-2.64%	-3.16%	-2.12%	-0.48%
Guyer High Zone Totals	10,002	7,602	7,694	7,636	7,544	7,508	7,401	7,342	7,277	7,213	7,183	7,174	7,192
Guyer Zone Absolute Change		-133	92	-58	-92	-36	-107	-59	-65	-64	-30	-9	18
Guyer Zone Percent Change		-1.7%	1.2%	-0.8%	-1.2%	-0.5%	-1.4%	-0.8%	-0.9%	-0.9%	-0.4%	-0.1%	0.3%

*Yellow box = over stated capacity





Ryan High School Zone



- 362 Annual Closings (18.5%)
- 689 VDL (16.7%)
- 4,813 Futures (18.0%)



Vertical Zones- Ten Year Forecast

Ryan High School



Campus Name	Capacity	FALL		ENROLLMENT PROJECTIONS									
		2017/18	2018/19	2019/20	2020/21	2021/22	2022/23	2023/24	2024/25	2025/26	2026/27	2027/28	2028/29
Ginnings Elementary School	740	569	561	559	572	575	584	604	633	657	675	702	723
Hodge Elementary School	740	584	635	629	637	691	734	802	847	863	895	920	936
Olive Stephens Elementary School	740	447	418	432	431	442	461	480	483	482	479	480	487
Pecan Creek Elementary School	740	703	665	656	661	702	726	763	780	785	788	791	785
Rivera Elementary School	740	604	620	603	607	620	616	616	628	633	633	636	632
Wilson Elementary School	740	598	617	659	670	697	709	700	698	700	697	697	699
ELEMENTARY TOTALS	4,440	3,505	3,516	3,538	3,578	3,727	3,830	3,965	4,069	4,120	4,167	4,226	4,262
Elementary Absolute Change		-95	11	22	40	149	103	135	104	51	47	59	36
Elementary Percent Change		-2.64%	0.31%	0.63%	1.13%	4.16%	2.76%	3.52%	2.62%	1.25%	1.14%	1.42%	0.85%
Strickland Middle School	1,334	881	907	930	938	935	944	955	1002	1030	1,057	1,084	1,123
Bette Myers Middle School	1,323	773	866	864	863	843	838	799	811	827	860	896	917
MIDDLE SCHOOL TOTALS	2,657	1,654	1,773	1,794	1,801	1,778	1,782	1,754	1,813	1,857	1,917	1,980	2,040
Middle School Absolute Change		-95	119	21	7	-23	4	-28	59	44	60	63	60
Middle School Percent Change		-5.43%	7.19%	1.18%	0.39%	-1.28%	0.22%	-1.57%	3.36%	2.43%	3.23%	3.29%	3.03%
Fred Moore High School		49	64	64	64	64	64	64	64	64	64	64	64
Ryan High School	2,340	2,048	2,103	2,139	2,198	2,236	2,199	2,258	2,188	2,152	2,208	2,178	2,250
HIGH SCHOOL TOTALS	2,340	2,097	2,167	2,203	2,262	2,300	2,263	2,322	2,252	2,216	2,272	2,242	2,314
High School Absolute Change		36	70	36	59	38	-37	59	-70	-36	56	-30	72
High School Percent Change		1.75%	3.34%	1.66%	2.68%	1.68%	-1.61%	2.61%	-3.01%	-1.60%	2.53%	-1.32%	3.21%
Ryan High Zone Totals	9,437	7,256	7,456	7,535	7,641	7,805	7,875	8,041	8,134	8,193	8,356	8,448	8,616
Ryan Zone Absolute Change		-149	200	79	106	164	70	166	93	59	163	92	168
Ryan Zone Percent Change		-2.00%	2.76%	1.06%	1.41%	2.15%	0.90%	2.11%	1.16%	0.73%	1.99%	1.10%	1.99%

*Yellow box = over stated capacity





Alternate Campus- Ten Year Forecast

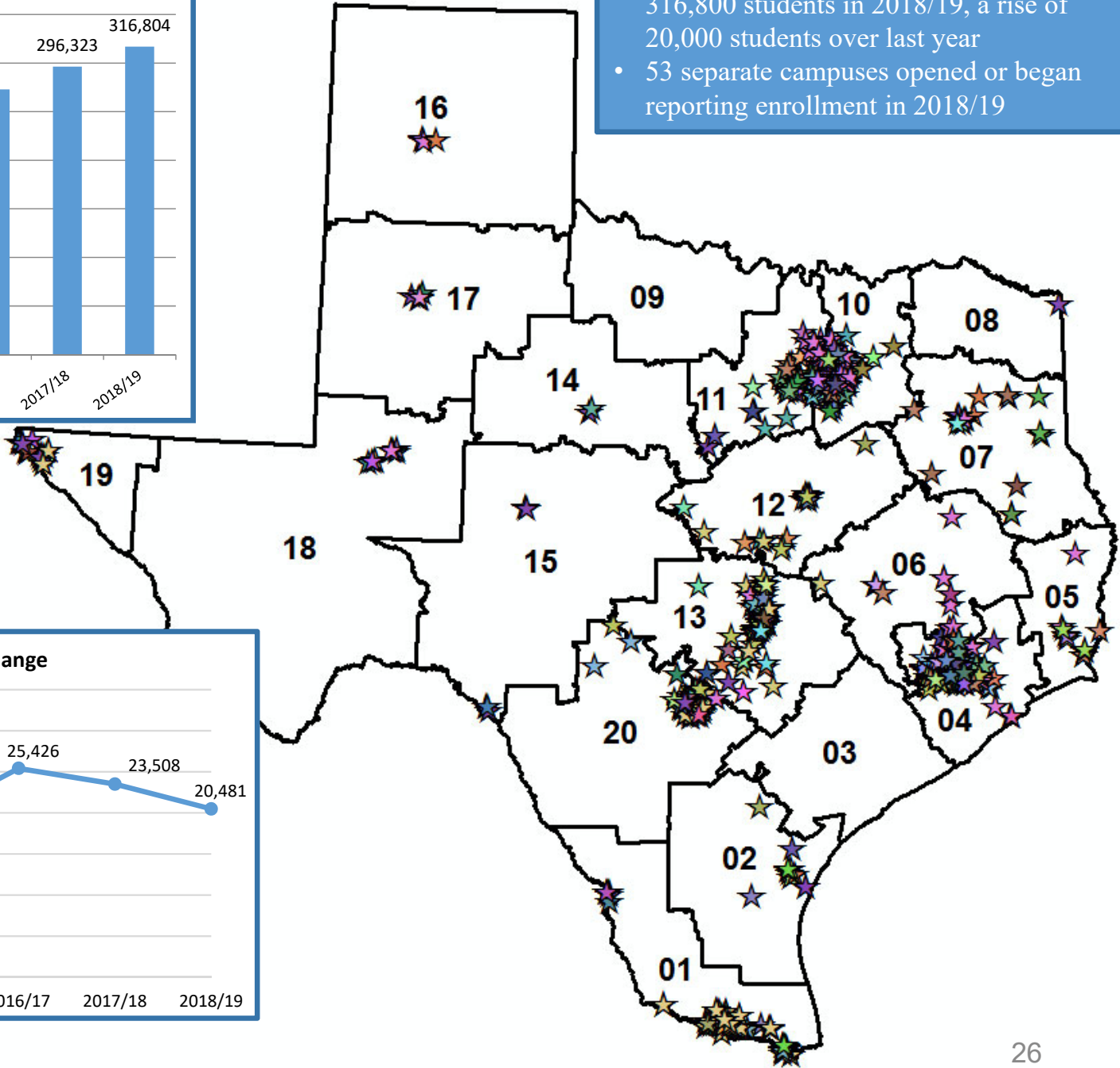
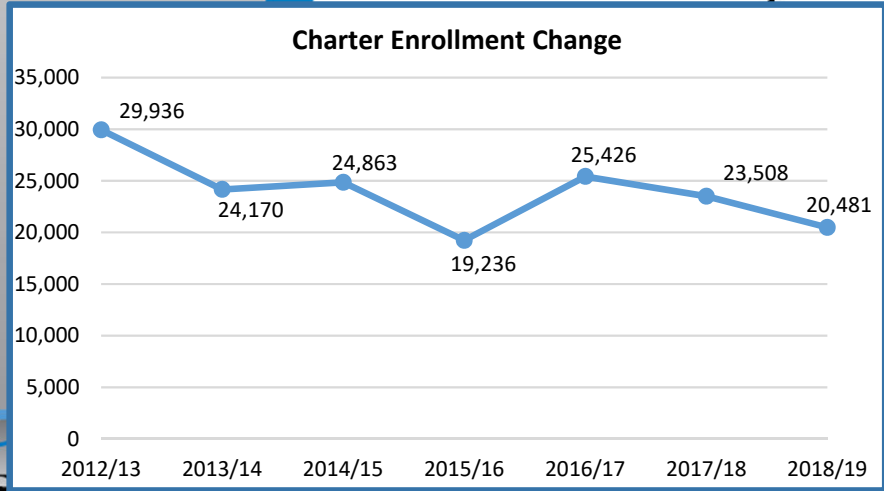
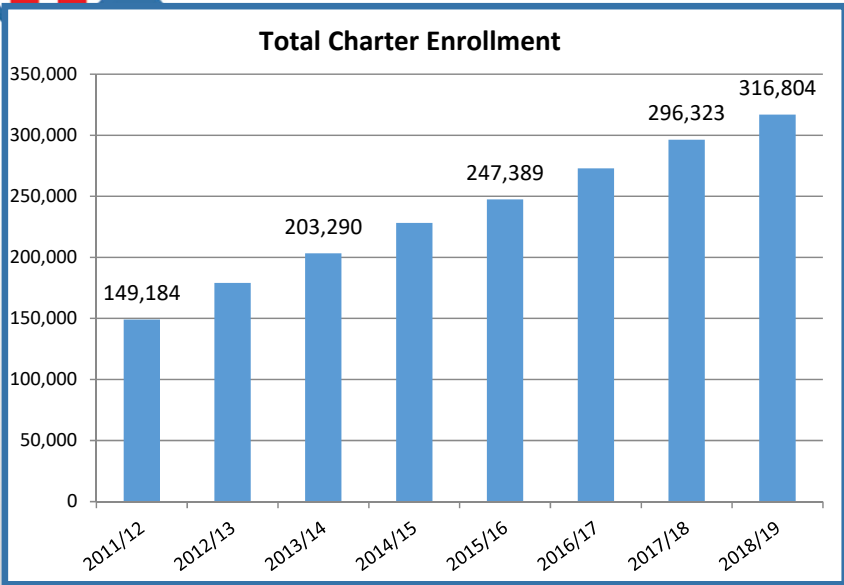
Campus Name	Capacity	HISTORY	FALL	ENROLLMENT PROJECTIONS									
		2017/18	2018/19	2019/20	2020/21	2021/22	2022/23	2023/24	2024/25	2025/26	2026/27	2027/28	2028/29
Ann Windle School For Young Child	740	390	339	339	339	339	339	339	339	339	339	339	339
Gonzalez School For Young Child	740	333	326	326	326	326	326	326	326	326	326	326	326
Denton J J A E P		5	3	3	3	3	3	3	3	3	3	3	3
Juvenile Detention CTR		56	54	54	54	54	54	54	54	54	54	54	54
Lester Davis School		56	31	31	31	31	31	31	31	31	31	31	31
ALTERNATIVE SCHOOL TOTALS		840	753	753	753	753	753	753	753	753	753	753	753
DISTRICT TOTALS	39,611	29,419	30,115	30,858	31,537	32,385	33,128	33,965	34,713	35,358	36,208	36,936	37,871
District Absolute Change		791	696	743	679	848	743	837	748	645	850	728	935
District Percent Change		2.76%	2.37%	2.47%	2.20%	2.69%	2.29%	2.53%	2.20%	1.86%	2.40%	2.01%	2.53%





Charter Schools in Texas

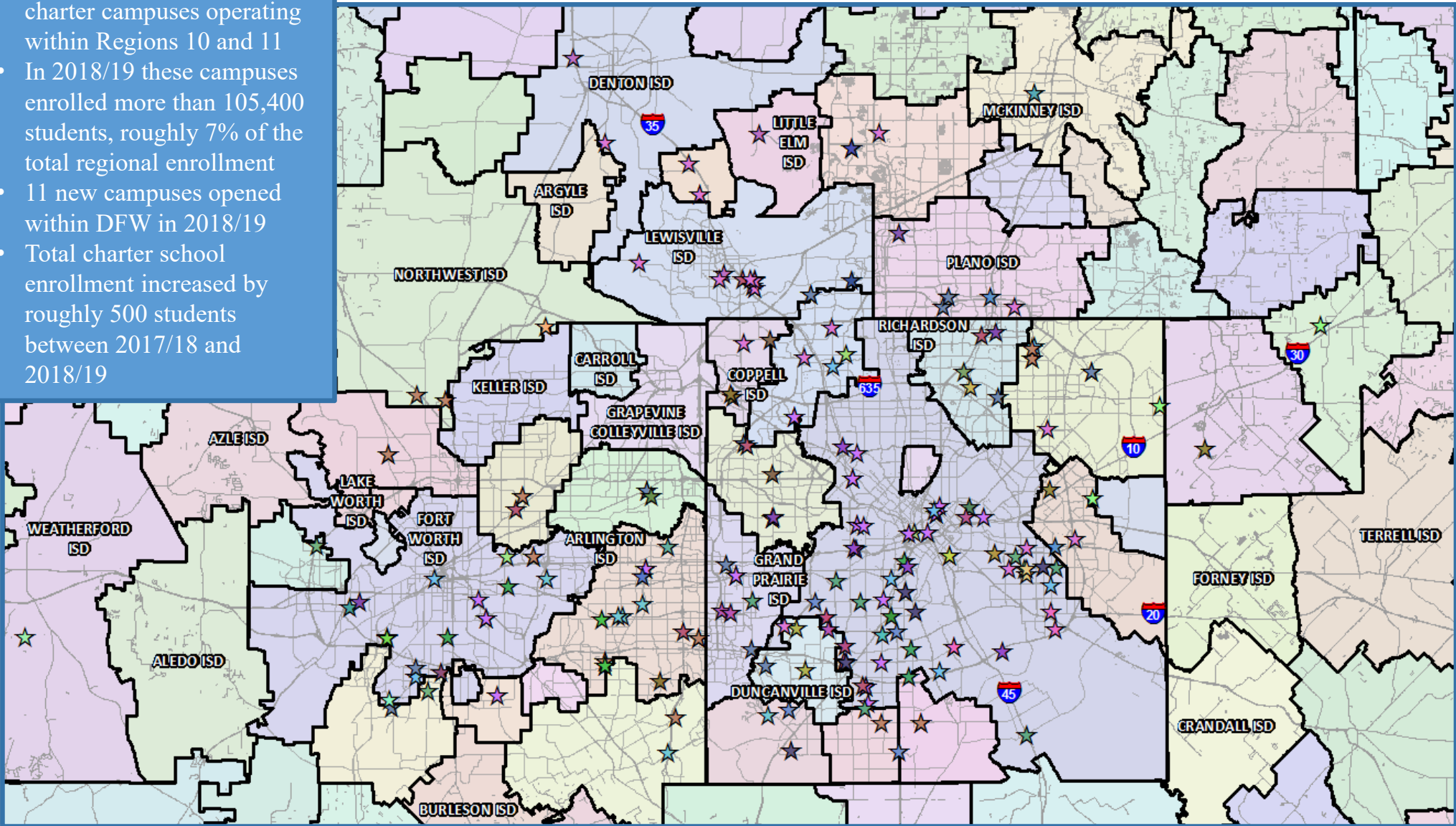
- There are currently more than 750 charter school campuses open across Texas
- These campuses enrolled more than 316,800 students in 2018/19, a rise of 20,000 students over last year
- 53 separate campuses opened or began reporting enrollment in 2018/19





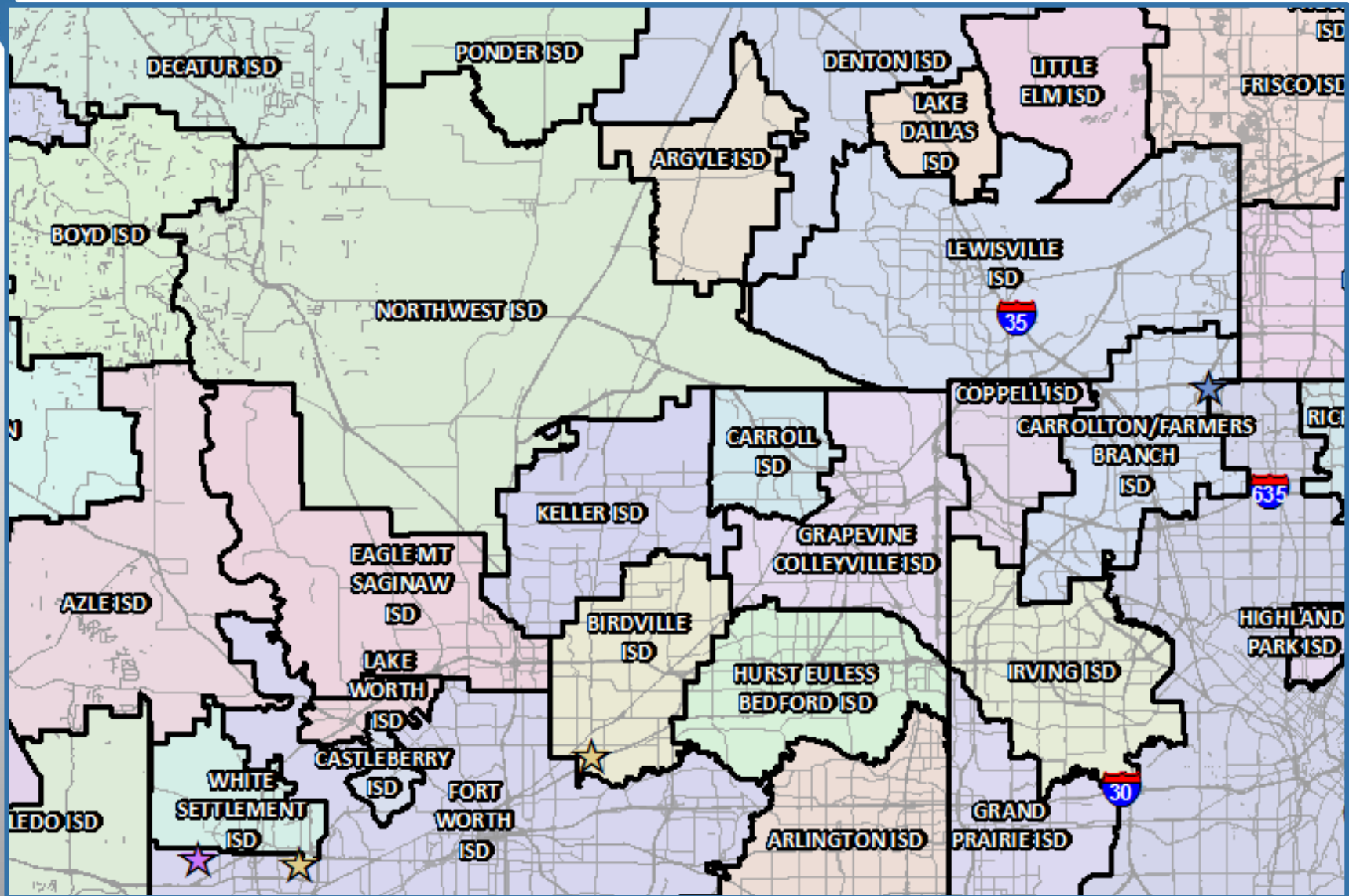
Charter Campuses in DFW

- There are approx. 220 charter campuses operating within Regions 10 and 11
- In 2018/19 these campuses enrolled more than 105,400 students, roughly 7% of the total regional enrollment
- 11 new campuses opened within DFW in 2018/19
- Total charter school enrollment increased by roughly 500 students between 2017/18 and 2018/19





New Campuses Opening in DFW in 2019/20



Charter School	Location	Grades	Notes
Uplift Elevate Prep	10900 Chapin Rd, FW	KG – 2, 6,7	Capacity for 1,900 students once KG -12
IDEA Rise Academy	3000 S Cherry Lane, FW	KG – 2, 6	Anticipate 460 to 520 students at opening
IDEA Achieve	1900 Thomas Rd, Haltom City	KG – 2, 6	Anticipate 460 to 520 students at opening
Life School Carrollton	2660 E Trinity Mills Rd, Carrollton	KG-5th	Could enroll 400-500 students at opening





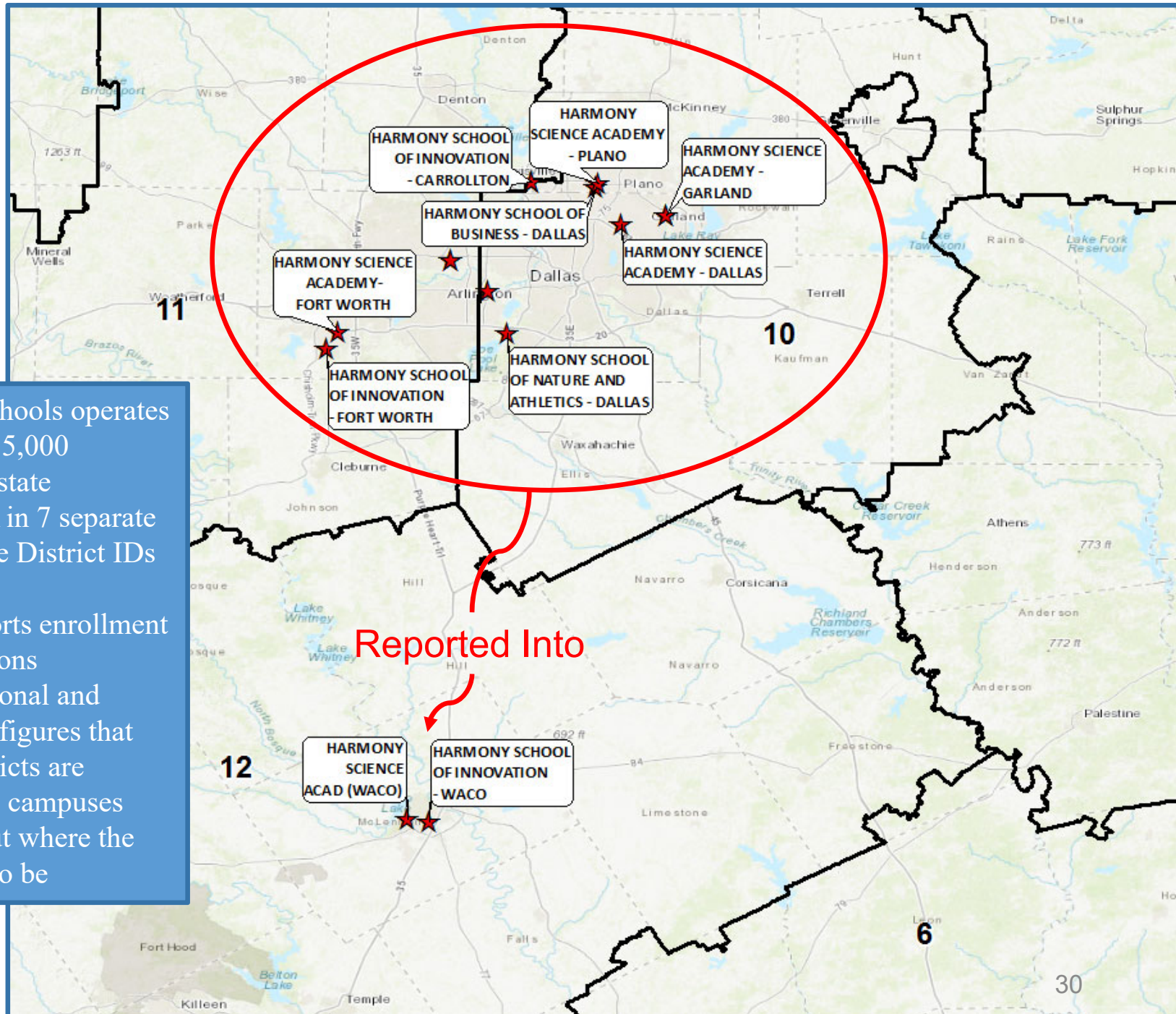
Challenges to Tracking Charter Schools

- Physical school locations vs TEA reporting locations
- Flexibility with facilities- temporary buildings, shorter construction time, different city approval process
- New Charters awarded annually
- Charter < > Campus
- Existing Charter holder expansions or relocations
- Public information requests- what information can be obtained
- Disclosure forms to impacted ISDs
 - Do not have to disclose a specific site address
 - “impacted districts” frequently include all districts within the charter’s approved “district boundary”. This is frequently 20 -30 public school districts or zip codes





Case Study: Charter School Enrollment Reporting



- Harmony Public Schools operates 37 campuses with 35,000 students across the state
- They report to TEA in 7 separate districts with unique District IDs and campuses
- Each “district” reports enrollment out of multiple regions
- This results in Regional and District enrollment figures that are skewed, as districts are reporting not where campuses and students are, but where the district is reported to be





Texas Charter School- As Reported to TEA

REGION	Total Charter Enrollment			Current	1-YEAR		5-YEAR		% of Total Enrollment	
	2015/16	2016/17	2017/18	2018/19	CHANGE	PERCENT	CHANGE	PERCENT	Total Enrollment	PERCENT
1	28,180	34,592	41,050	49,181	8,131	19.8%	28,007	132.3%	436,115	11.3%
2	1,255	1,252	1,261	1,262	1	0.1%	-210	-14.3%	103,152	1.2%
3	0	0	0	0	0	0.0%	0	0.0%	53,344	0.0%
4	56,011	56,940	58,306	46,270	-12,036	-20.6%	-4,143	-8.2%	1,201,680	3.9%
5	1,374	1,731	1,780	2,345	565	31.7%	1,420	153.5%	84,066	2.8%
6	1,446	1,474	1,762	1,927	165	9.4%	27	1.4%	201,228	1.0%
7	3,348	3,755	4,141	4,329	188	4.5%	1,487	52.3%	173,796	2.5%
8	0	0	0	0	0	0.0%	0	0.0%	56,113	0.0%
9	0	0	0	0	0	0.0%	-159	-100.0%	37,533	0.0%
10	60,720	70,142	79,139	81,298	2,159	2.7%	34,275	72.9%	874,990	9.3%
11	13,595	15,953	17,053	16,450	-603	-3.5%	54	0.3%	593,516	2.8%
12	12,917	13,076	13,303	13,303	0	0.0%	6,096	84.6%	176,229	7.5%
13	18,003	19,248	19,845	43,477	23,632	119.1%	30,114	225.4%	412,974	10.5%
14	12,778	14,219	13,067	12,051	-1,016	-7.8%	-471	-3.8%	57,720	20.9%
15	2,332	2,656	2,737	2,793	56	2.0%	1,628	139.7%	50,175	5.6%
16	0	0	0	0	0	0.0%	-213	-100.0%	85,018	0.0%
17	472	478	507	516	9	1.8%	-776	-60.1%	84,503	0.6%
18	1,423	1,769	2,094	2,260	166	7.9%	612	37.1%	93,459	2.4%
19	5,144	5,745	5,744	5,810	66	1.1%	1,869	47.4%	176,994	3.3%
20	28,391	29,785	34,534	33,532	-1,002	-2.9%	13,897	70.8%	479,305	7.0%
STATE	247,389	272,815	296,323	316,804	20,481	6.9%	113,514	55.8%	5,431,910	5.8%
Growth	19,236	25,426	23,508	20,481						

Large swings in enrollment are a result of reporting changes, not actual campus enrollment changes





Texas Charter School- From Physical Campus Locations

10,600 fewer students

25,570 more students

17,300 more students

11,900 fewer students

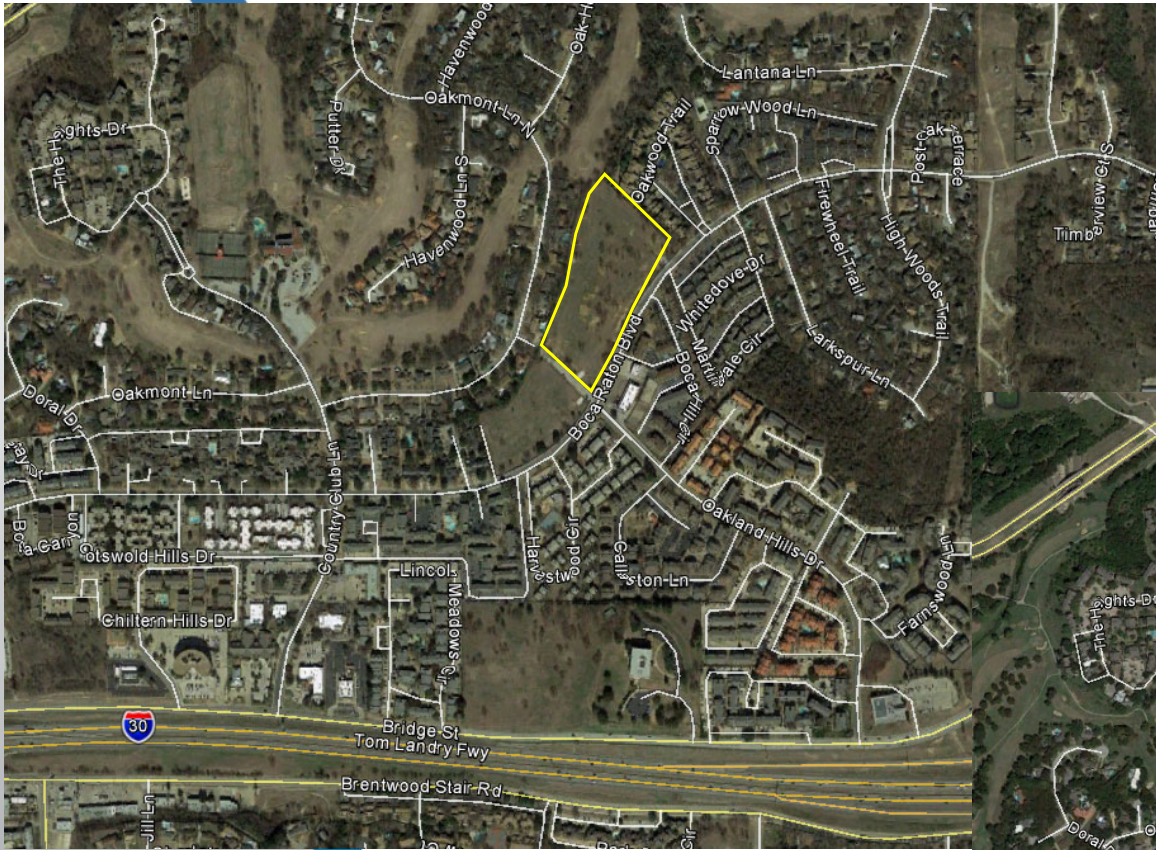
REGION	Operating Campuses	Total Charter Enrollment		Current 2018/19	1-YEAR		% of Total Enrollment	
		2016/17	2017/18		CHANGE	PERCENT	Total Enrollment	PERCENT
1	73	31,778	34,935	38,570	3,635	10.4%	436,115	8.8%
2	13	2,980	3,073	3,382	309	10.1%	103,152	3.3%
3	0	0	0	0	0	0.0%	53,344	0.0%
4	164	62,006	66,850	71,848	4,998	7.5%	1,201,680	6.0%
5	12	2,813	2,823	3,331	508	18.0%	84,066	4.0%
6	13	2,102	2,112	3,024	912	43.2%	201,228	1.5%
7	21	4,340	4,776	4,973	197	4.1%	173,796	2.9%
8	1	52	61	72	11	0.0%	56,113	0.1%
9	0	0	0	0	0	0.0%	37,533	0.0%
10	142	62,752	68,301	71,618	3,317	4.9%	874,990	8.2%
11	79	32,039	36,581	33,794	-2,787	-7.6%	593,516	5.7%
12	17	2,982	3,581	3,526	-55	-1.5%	176,229	2.0%
13	91	26,578	28,507	31,498	2,991	10.5%	412,974	7.6%
14	2	552	589	626	37	6.3%	57,720	1.1%
15	5	1,684	1,573	1,838	265	16.8%	50,175	3.7%
16	4	748	888	844	-44	0.0%	85,018	1.0%
17	5	1,179	1,198	1,196	-2	-0.2%	84,503	1.4%
18	9	3,408	3,981	4,344	363	9.1%	93,459	4.6%
19	18	5,157	5,120	6,062	942	18.4%	176,994	3.4%
20	87	24,992	32,203	36,476	4,273	13.3%	479,305	7.6%
Total	756	268,142	297,152	317,022	19,870	6.7%	5,431,910	5.8%
Change			29,010	19,870				



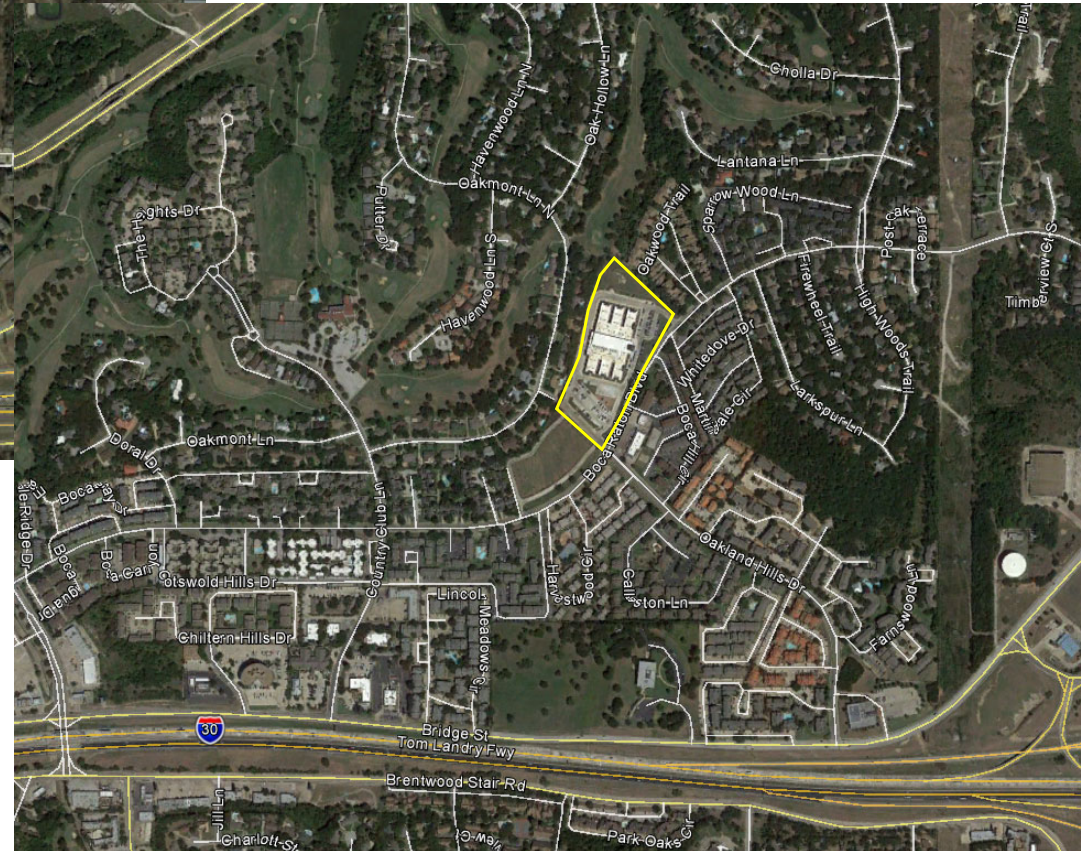


Case Study: Charter School Build Times

January 25th, 2017



September 5th, 2017



International Leadership of Texas- E Fort Worth opened a new campus with 1,166 students in August 2017 with less than 8 months of construction time





Case Study: Charter School Locations



Harmony Science Academy plans to buy the vacant H-E-B building on Valley Mills Drive in front of the former Floyd Casey Stadium site. It will be the school's second Waco campus in a former grocery store building.
Staff photo— Jerry Larson, file

Harmony Public Schools renovated an old H-E-B grocery store into a campus in less than a year

Picture Source: Waco Tribune-Herald

Uplift Ascend Preparatory enrolled 288 students in a temporary location in a shopping center for 4 months until construction finished on their permanent facility. The permanent campus was more than 8 miles south of the temporary location.

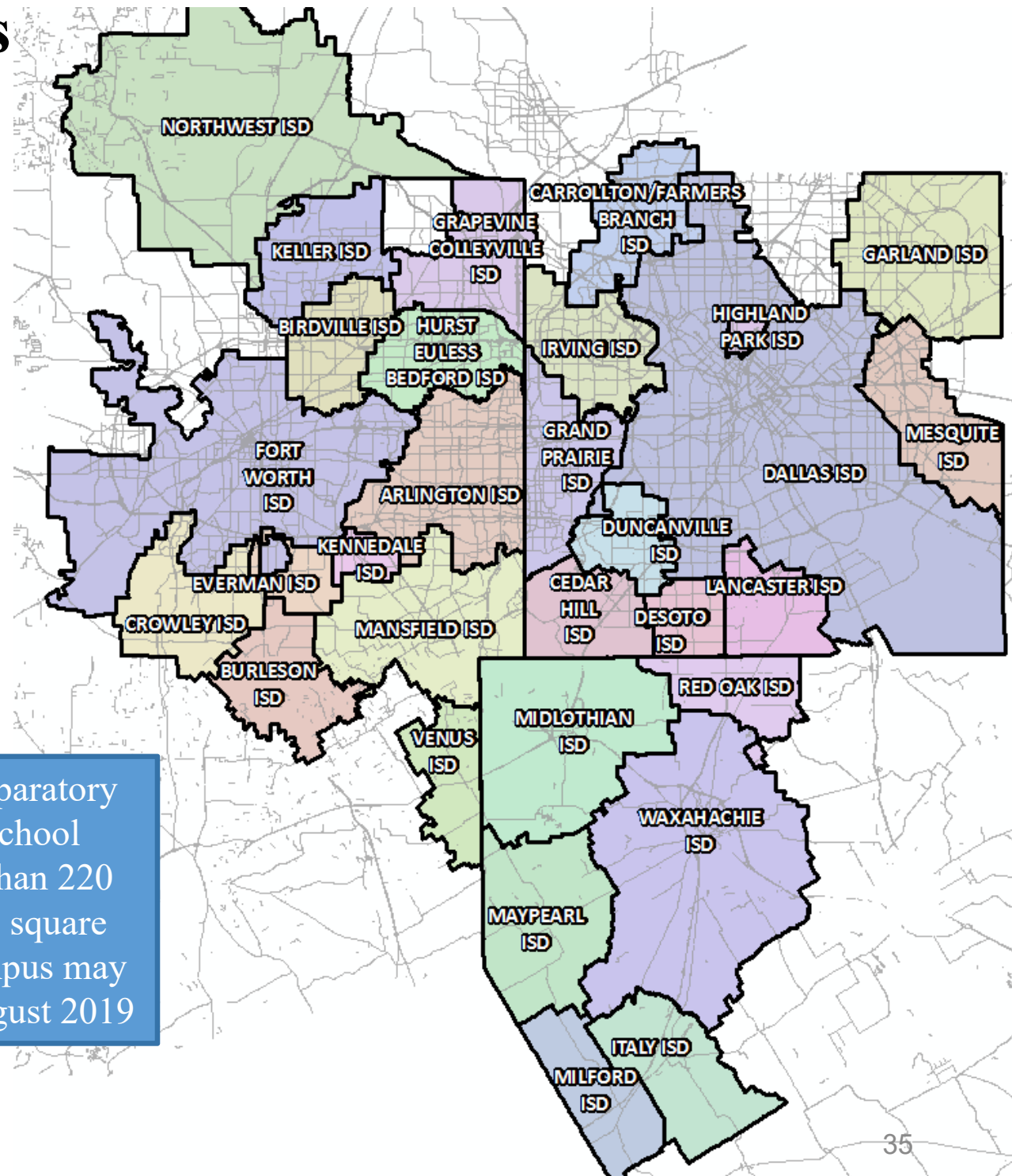


KIPP Destiny enrolls 960 students in PK – 8th grade in a strip center facility in Dallas. This has been their permanent facility since 2013. KIPP opened a HS in 2018/19 in a similar facility with 112 students.





District Impacts



In March 2019 UME Preparatory Academy notified 30 school districts spanning more than 220 municipalities and 2,340 square miles that a proposed campus may impact their district in August 2019





Information Request Roadblocks

The screenshot shows the Houston Gateway Academy website. At the top, there are navigation links for 'Login', 'Staff Login', and 'En Español'. The main header features the school's logo and the text 'HOUSTON GATEWAY ACADEMY ELITE COLLEGE PREP ACADEMY'. A central white box with a grey border contains the message: 'Please verify your identity. We are only accepting secure messages at this time, please verify your identity by choosing an option below. You will not be able to fill out the form until you complete this step.' Below this message are two buttons: 'Sign in with Google' and 'Log in with Facebook'. To the left of the form, there is a 'CONTACT' section with the school's address, phone, and fax numbers, and an 'Email us' section with input fields for 'Your Name' and 'Your Email'.

Good morning Michelle,

As noted below, there are no documents responsive to your request and the public information requirements in Texas do not require the creation of documents or the preparation of answers to questions or interrogatories. Please let me know if I can be of further assistance.

Warm regards,
Anastasia

Anastasia Korte
Managing Director of Compliance
BASIS.ed
[10130 N. Oracle Road, Suite 210
Tucson, AZ 85704](http://10130.N.Oracle.Road.Suite.210.Tucson.AZ.85704)
O +1.520.219.6000 ext. 109
M +1.520.262.8955
<http://BASISed.com/>

The screenshot shows an email thread. The top part is the header: 'Fri 3/22/2019 5:32 PM', 'Promesa Academy <info@promesaacademy.org>', and 'Re: Public Information Request'. Below this is the recipient information: 'To: Box, Michelle'. An 'Action Items' section is visible. The main body of the email contains the following text: 'Michelle, That information will become public as soon as we have a lease signed. On Fri, Mar 22, 2019 at 6:25 AM Box, Michelle <michelle@tdemographics.com> wrote: Ambika, Thank you for your quick reply. Do you know when you anticipate finalizing your site address for your campus? Michelle Box Research Manager Templeton Demographics Hanley Wood | Metrostudy michelle@tdemographics.com'.

From: Dept., Admissions <admissions@umeprep.org>
Sent: Monday, April 15, 2019 2:55 PM
To: Box, Michelle <michelle@tdemographics.com>
Subject: Re: Information Request

Thank you for your email. Can you please tell me who you are and why this information is being requested?

Caralyn Ignatz
Admissions Director
UME Preparatory Academy
214-445-6243 ext 2841





Summary

- Denton's unemployment rate is below 3%.
- Denton ISD has been the second fastest growing district in Region 11 in the last 5 years.
- In the 1st quarter, Denton had the second most annual closings of any school district in DFW, more than Dallas and Frisco ISD.
- The Union Park Elementary zone has started more than 850 new homes in the last 12 months.
- Denton ISD can expect an increase of nearly 3,850 students during the next 5 years.
- 2023/24 enrollment projection: 33,965 students.
- DISD is projected to enroll more than 37,870 students for the 2028/29 school year.