



# **CENTRAL**SQUARE

**TECHNOLOGIES**

## **ONESolution CAD Generic XML Export**

**Product Advisory**

*Public Safety and Justice*

## Contact us

CentralSquare Technologies  
1000 Business Center Drive  
Lake Mary, Florida 32746  
[centralsquare.com](http://centralsquare.com)

## Connect Community

[community.centralsquare.com](http://community.centralsquare.com)

## Education and training

[csu@centralsquare.com](mailto:csu@centralsquare.com) • (800) 727-8088 • [train.superion.com/superion-university/catalog.php](http://train.superion.com/superion-university/catalog.php)

## Support

[support.centralsquare.com](http://support.centralsquare.com) • (888) 663-7877

---

Copyright © 2020. CentralSquare Technologies, LLC. All Rights Reserved.

Except as permitted under US Copyright Act of 1976, no part of this work may be reproduced, distributed, or transmitted in any form or by any means, or stored in a database or retrieval system, without prior written permission and consent of the publisher.

ONESolution and ONESolution's logo are trademarks of CentralSquare Technologies, LLC (herein "Publisher"), or its affiliates, successors, or assigns.

### DISCLAIMER

All of Publisher's original works of authorship fixed in tangible mediums of expression, including but not limited to this publication of any associated software, are copyrighted under United States law and applicable international copyright laws and treaty provisions. The copyrights in the works are owned by the Publisher or by one of its affiliates, or by third parties who have licensed their materials to Publisher. The entire work of this publication, and any other copyrighted works of the Publisher, are copyrighted under United States law and applicable international copyright laws and treaties, and Publisher owns the copyright in the selection, coordination, arrangement and enhancement of said works. Publisher reserves all rights not expressly granted to the licensee.

You have been granted a limited non-exclusive license to use and/or access the published works under terms of the associated license agreement, and any other agreements governing the software listed on the cover of this publication; all of which are incorporated hereto.

Except as expressly stated in the applicable license agreement, you may not copy, download, print, publish, display, perform, distribute, transmit, transfer, translate, modify, add to, update, compile, abridge or in any other way transform or adapt all or any part of any of the Publisher's copyrighted works without first obtaining written permission from the Publisher.

No right, title, or interest in the copyrighted works is transferred to you when you access or use the works. Except for the limited, non-exclusive license expressly granted in the governing agreement, nothing contained in these terms and conditions shall be construed as conferring a license or ownership interest, be it by implication, estoppel or otherwise, or any other right under any copyright, trademark, patent, or other intellectual property right of Publisher or any third party.

The information in this copyrighted works is subject to change without notice.

In no event shall the Publisher be liable for any special, incidental, indirect, or consequential damages of any kind arising out of or in connection with the use of the Publisher's copyrighted works or other material derived thereof, whether or not advised of the possibility of damage, and on any theory of liability. This publication is provided "as-is." **The Publisher gives no express warranties, guarantees, or conditions. Publisher excludes all implied warranties and conditions, including those of merchantability, fitness for a particular purpose, and non-infringement. If local law does not allow the exclusion of implied warranties, then any implied warranties, guarantees, or conditions last only during the term of the limited warranty and are limited as much as local law allows. If local law requires a longer limited warranty term, despite this agreement, then that longer term will apply, but licensee can recover only the remedies allowed by the applicable governing agreement.**

## Requirements

- License activation
- ONESolution CAD 16.2.0 or newer
- Query Server/Trans 16.2.0 or newer
- CADTasks Service

## Overview

A generic XML interface is available for ONESolution CAD. This interface enables a one-way CAD event export designed to provide third-party applications with incident and unit information. Each export file represents a single CAD event and is forwarded to a customer-specified network directory location where it is available for import by the third-party provider.

In release 18.0.0, CentralSquare added the ability to export CAD events with no report number.

In release 18.1.0, CentralSquare added the ability to choose a date and time format for values in the export files.

In release 18.2.0, CentralSquare modified the Generic XML Export to include the option to export geo-coordinates in United States National Grid (USNG), also known as Universal Transverse Mercator (UTM), format for geo-verified locations. When the option is enabled, the CADTasks service handles the conversion from decimal latitude and longitude to USNG format when the export is processed.

In release 19.4.0, CentralSquare added the event geo proximity element, reclassified nature code element, and reclassified nature description element to the CadExport/EventDetails section of the Generic XML export.

## Installing the Service Control Portal and CADTasks

Before you can use the export, a ONESolution Application Installation Consultant (AIC) or other designated personnel must install the following applications:

- Service Control Portal—The user interface CentralSquare provides for configuring and managing ONESolution service applications.
- CADTasks service application—This service generates export files containing ONESolution CAD incident and unit information.

**Note:** When you install the Service Control Portal and CADTasks service, you are prompted for a database configuration file location. Point to the location where the Databases.xml file resides. The file is typically located in the onesolutioncad folder of the data structure. Verify the location of the file to ensure that you have the correct path before you install the Service Control Portal and CADTasks service.

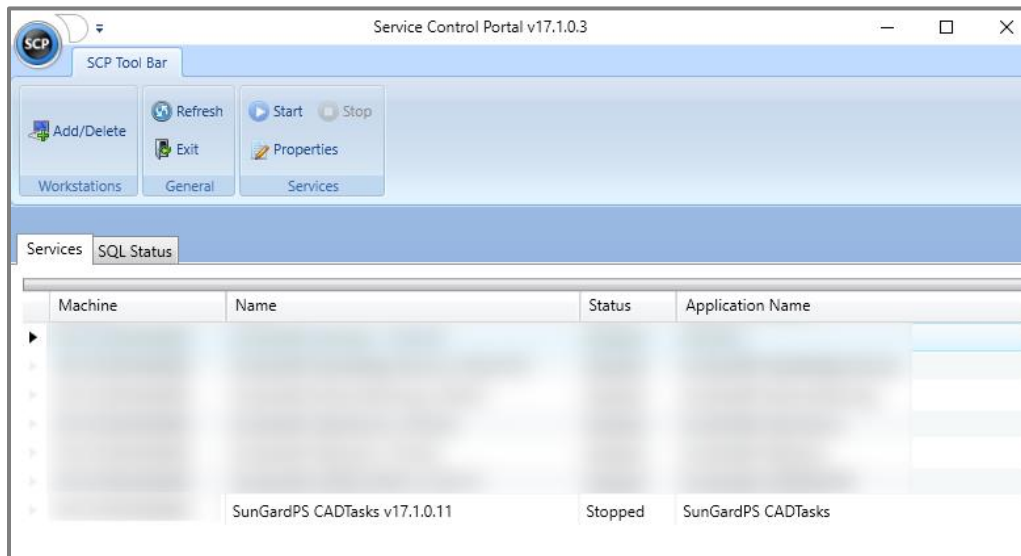
**Example:** [\\CADSERVERNAME\CADSHARENAME\onesolutioncad](#)

## Configuring the CADTasks Service

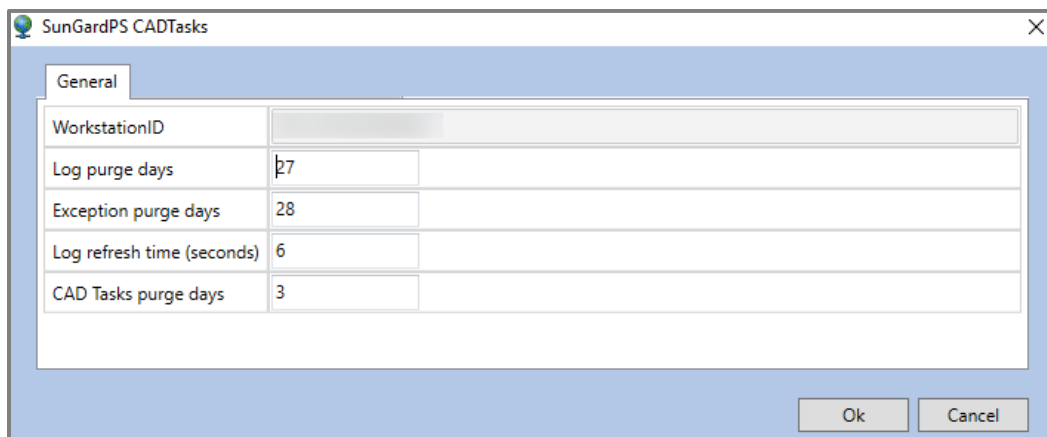
Once the Service Control Portal and CADTasks are installed, CentralSquare personnel, or a CAD system administrator with the assistance of CentralSquare personnel, can configure the CADTasks service.

Follow these steps for configuration:

1. On the computer where the service is installed, typically the CAD Services workstation, double-click the Service Control Portal desktop icon to open the Service Control Portal.



2. On the **Services** tab, right-click the **CADTasks** row and select **Properties**. The **CADTasks** window appears open to the **General** tab.

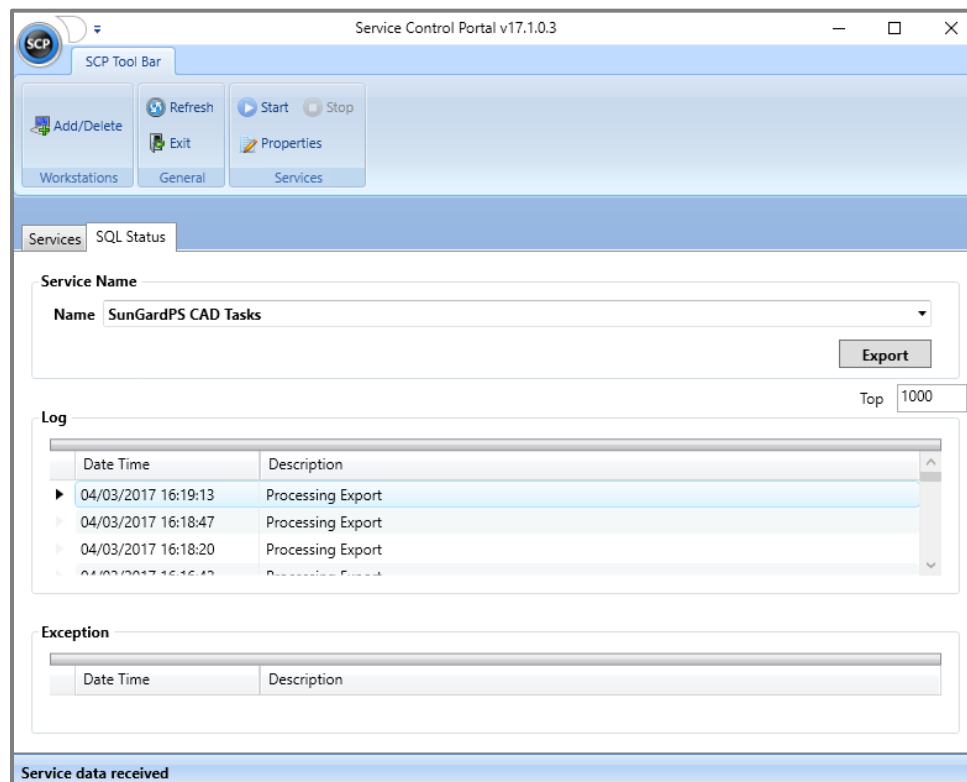


3. Complete the following fields:
  - Log Purge days—Enter the maximum number of days to keep the transaction Servlog entries before purging them. The default value is 30.
  - Exception purge day—Enter the maximum number of days to keep exception Servlog entries before purging them. The default value is 30.

- Log refresh time (seconds)—Enter how often the log automatically refreshes.
- CAD Tasks purge days—Enter the maximum number of days to keep CADTasks entries before purging them. The default value is 15.

**Notes:**

- The **WorkstationID** field value defaults to the machine name of the computer where the service is running. CentralSquare personnel can assist in managing the workstation ID in the **Service Control Portal** window.
- The Servlog is a transaction log that records transactions between the service and CAD, Mobile Data Service, or Query Server applications. Access Servlog by clicking the **SQL Status** tab in the **Service Control Portal** window. Click **Export** to export errors to a .csv file, specifying the number of lines to export in the **Top** field.

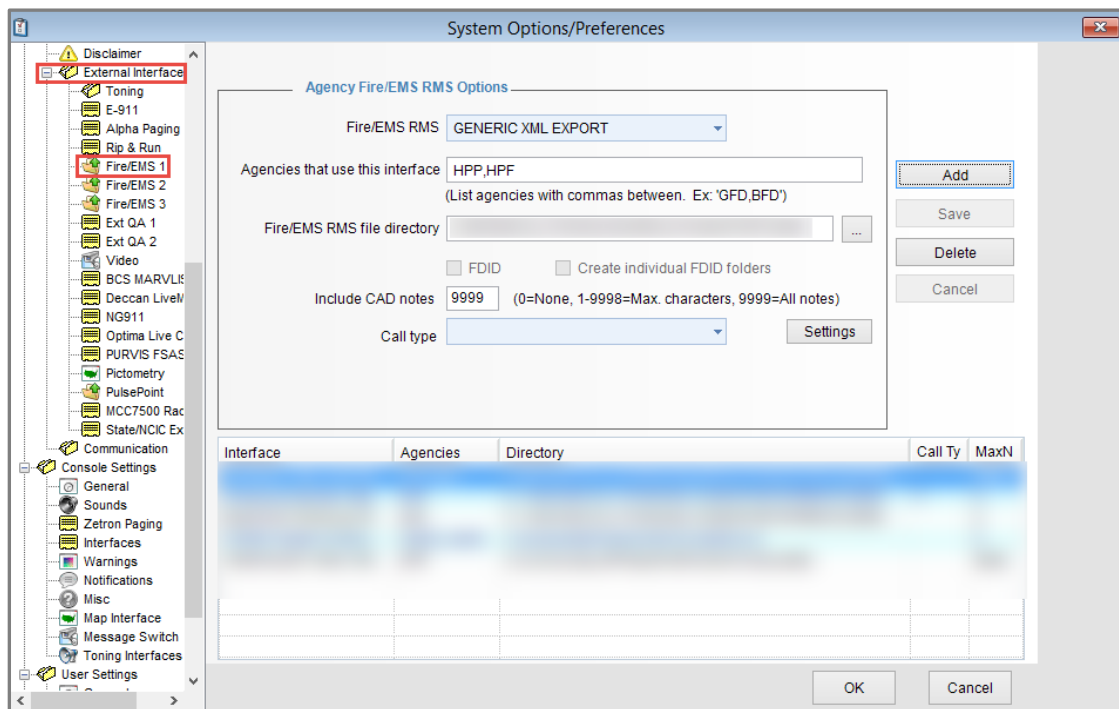


4. Click **OK** to save your changes to the **CADTasks** window and return to the **Service Control Portal** window.
5. On the **Services** tab, right-click the **CADTasks** row and select **Start**. The CADTasks service starts.
6. Close the **Service Control Portal** window.

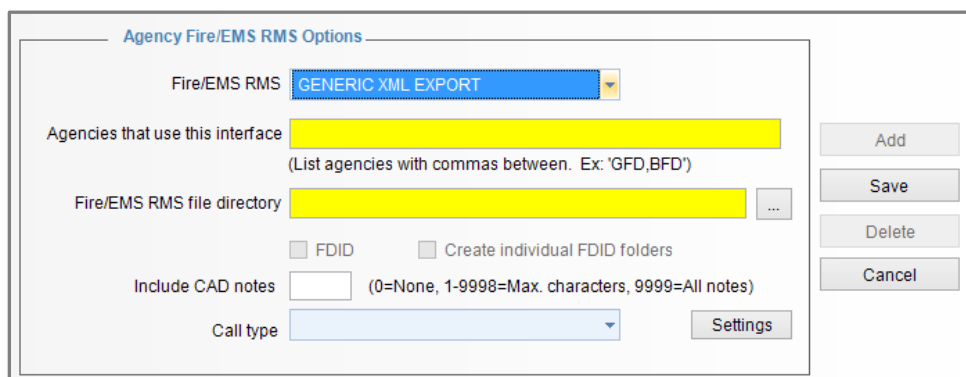
## Enabling the Generic XML Export

Follow these steps to configure a new generic XML export:

1. On the ONESolution CAD main menu, click **Options** to display the **Options** menu.
2. Click **Options/Preferences** to display the **System Options/Preferences** window.
3. Expand the **System Settings** folder.
4. Expand the **External Interfaces** folder.
5. Click **Fire/EMS 1** to display Agency Fire/Ems RMS Options




6. Click **Add** to clear the fields.
7. In the **Fire/EMS RMS** field, click the arrow to select **Generic XML Export**.



8. In the **Agencies that use this interface** field, enter a comma-separated list of the agency codes of the agencies using the interface.

**Notes:**

- Do not enter spaces between commas and agency codes.
- Agency codes must match the agency codes in your agency code table.

9. In the **Fire/EMS RMS file directory** field, click  to browse to the directory where you want to deposit the export files.

10. In the **Include CAD notes** field, enter one of the following codes for including CAD notes:

- a. 0—CAD notes are not exported.
- b. 1-9998—When the code is a number within this range, that same number of characters is exported. For example, when **Include CAD notes** = 5, five characters are exported.
- c. 9999—All CAD notes are exported.

11. In the **Call type** field, click the arrow to select the appropriate call type to use with the third-party application.

**Note:** Use this filter to limit the type of exported calls. This is an optional step.

12. Click **Save** to save your changes and display the new entry in the grid.

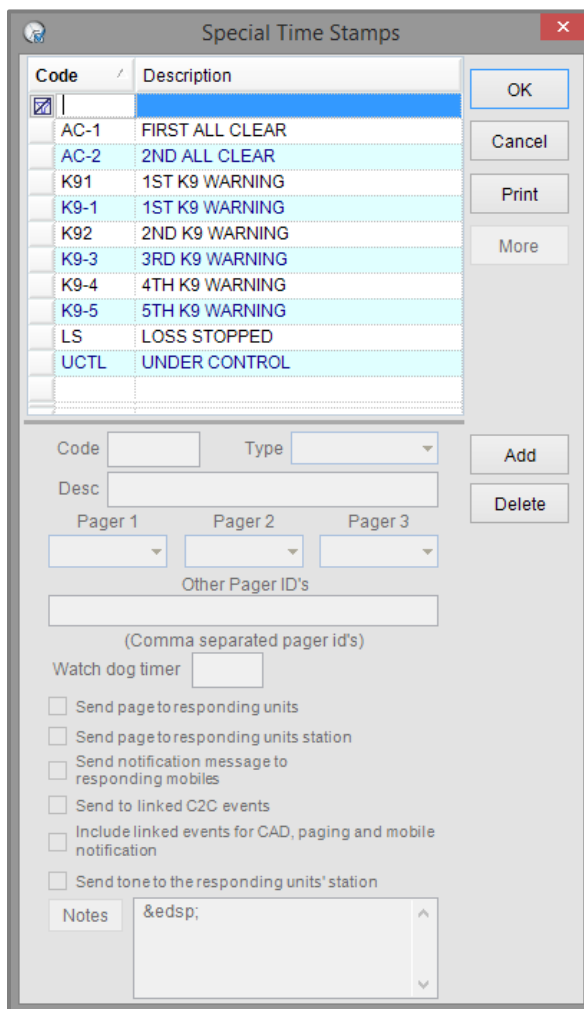
**Note:** The **FDID (Fire Department ID)** and **Create individual FDID folders** fields are not enabled for the generic XML export.

## Specifying a Transfer of Patient Care Time Stamp

You can also specify a Transfer of Patient Care time stamp to include the dispatcher's time stamp in the XML export file.

Follow these steps to create a time stamp for selection:

1. On the ONESolution CAD main menu, click **Codes** to display the Codes menu.
2. Click **Misc** to display the Misc menu.
3. Click **Special Time Stamps** to display the **Special Time Stamps** window.



The screenshot shows the 'Special Time Stamps' window. It features a table with columns 'Code' and 'Description'. The table contains the following entries:

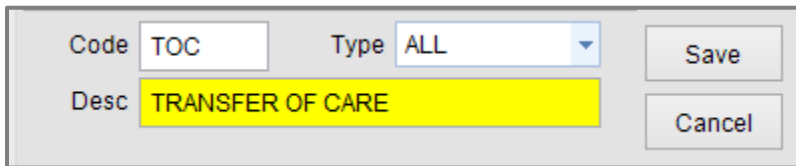
Code	Description
AC-1	FIRST ALL CLEAR
AC-2	2ND ALL CLEAR
K91	1ST K9 WARNING
K9-1	1ST K9 WARNING
K92	2ND K9 WARNING
K9-3	3RD K9 WARNING
K9-4	4TH K9 WARNING
K9-5	5TH K9 WARNING
LS	LOSS STOPPED
UCTL	UNDER CONTROL

Below the table, there are fields for 'Code', 'Type', 'Desc', 'Pager 1', 'Pager 2', 'Pager 3', and 'Other Pager ID's'. There are also checkboxes for various notification options and a 'Notes' field.

4. Click **Add** to enable the fields.
5. In the **Code** field, enter the code you want to indicate a transfer of care time stamp.



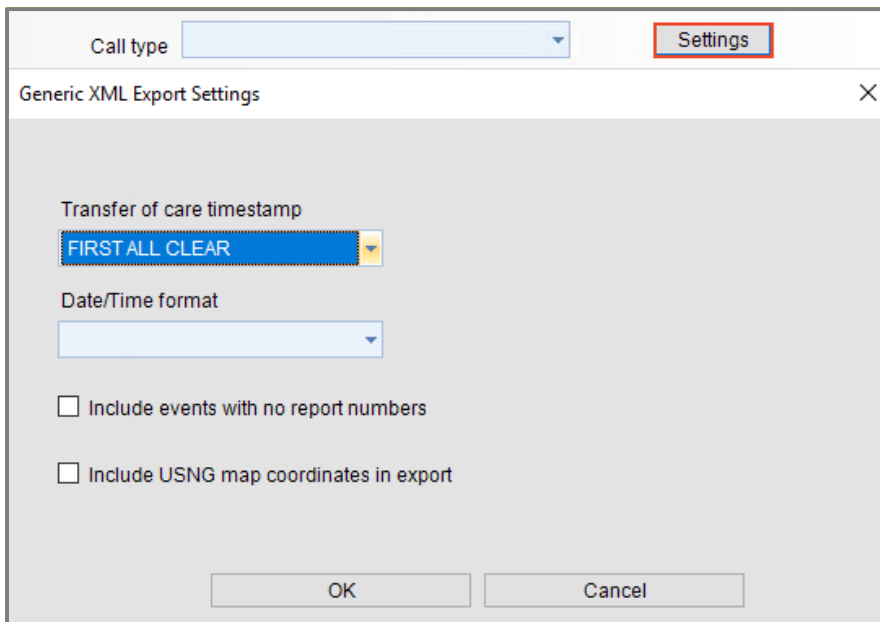
6. In the **Desc** field, enter **Transfer of Care**.



7. Click **Save** to save your changes.
8. Click **OK** to close the **Special Time Stamps** window.

Now, follow these steps to select the Transfer of Care time stamp for inclusion in the XML export:

1. On the ONESolution CAD main menu, click **Options** to display the **Options** menu.
2. Click **Options/Preferences** to display the **System Options/Preferences** window.
3. Expand the **System Settings** folder.
4. Expand the **External Interfaces** folder.
5. Click **Fire/EMS 1** to display Agency Fire/Ems RMS options.
6. Click **Settings** to display the **Generic XML Export Settings** window.



7. In the **Transfer of Care Timestamp** field, click the arrow to select the custom time stamp you created to indicate a transfer of patient care.

**Note:** The Transfer of Care time stamp is only available in CAD. Therefore, to include the Transfer of Care time stamp in the XML export file, the dispatcher must select the Transfer of Care time stamp in CAD before clearing the call in either CAD or MCT. You must associate the time stamp with a unit when transferring patient care.

8. In the **Date/Time format** field, select the desired date/time formatting option. The default format is YYYY-MM-DD HH:MM:SS. For example, 2018-04-09 08:00:00.
9. Select the **Include events with no report numbers** check box to include CAD events with no report numbers in the export. This setting is disabled by default.
10. Select the **Include USNG map coordinates in export** check box to export latitude and longitude coordinates in USNG format.  
**Note:** Because converting USNG coordinates can slow the export process, the setting is disabled by default.
11. Click **OK** to save your changes and close the **Generic XML Export Settings** window.
12. Click **OK** to close the **System Options/Preferences** window.

## Requirements for ONESolution CAD Event Exports

The following requirements must be met before ONESolution CAD events will export:

- You must enable the generic XML interface. See “Enabling the Generic XML Export.”
- The CAD event agency code must match the agency code(s) specified in configuration settings. See “Enabling the Generic XML Export.”
- The CAD event nature code category must match the call type category specified in configuration settings. See “Enabling the Generic XML Export.”
- The CAD event must contain a report number.
- Report Only events export when a unit is assigned to the event and the event contains a report number. Report Only export files contain limited unit response information because a unit did not actually respond to the event.

**Note:** Report Only events are events entered and assigned to a unit in ONESolution CAD using the **RO** command. These events do not require a unit response.

- Cancelled events only export when the event contains a report number and dispatched units. The cancelled event can contain limited incident and unit information.

**Note:** Cancelled events are events cancelled using the **Cancel** command.

- ONESolution CAD generates an export file multiple times during the life of an event due to the following unit status or data changes:
  - A unit is dispatched (D) to the event
  - An assigned unit's status changes to “Enroute” (E)
  - An assigned unit's status changes to “Arrive” (A)
  - An assigned unit's status changes to “Transport” (T)
  - An assigned unit arrives at the transport destination using the “Arrive” or “Hospital” status (A or H, after T)
  - An assigned unit's status changes to “Available on scene” (S)
  - A unit is cleared (C) from the event

- A unit is cancelled (X) from the event
  - The location of the event changes
  - The nature code of the event changes
- The latest export file always overwrites the previous export file for the event.

**Important:** ONESolution CAD events created, updated, or cleared in MCT export based on the same requirements as those for ONESolution CAD.

## Layout of the Export File

The following details are important to the export file name and file layout:

- The file name is formatted as ABCD\_2013123456.xml.
  - ABCD—Agency code for the event
  - \_ (underscore)—Separator
  - 2013123456—Incident ID number
- The file contains a standard XML declaration.
- Dates and times are formatted as YYYY-MM-DD HH:MM:SS.  
**Example:** 2013-09-16 17:24:32
- Times are formatted in military time.
- For elements that may not contain ONESolution CAD data, the XML tag displays with an empty data element.
- The export process removes any control characters found in the ONESolution CAD Notes data.

See the following table for an output example:

Root Element	Level 1	Level 2	Level 3	Level 4	Level 5	Element Type	Size	Comments
CADExport						Complex		
CADExport	EventDetails					Complex		
CADExport	EventDetails	AgencyCode				Simple	4	CAD agency code
CADExport	EventDetails	ReportNumber				Simple	14	Department case (report) number – <b>Example:</b> 20131234567
CADExport	EventDetails	CadInciNumber				Simple	14	CAD incident (serial) number – <b>Example:</b> 20131234567
CADExport	EventDetails	NatureCode				Simple	6	Event nature code
CADExport	EventDetails	NatureDescription				Simple	30	Nature full description
CADExport	EventDetails	EventPriorityCode				Simple	1	CAD event priority code – P or 1 to 9
CADExport	EventDetails	PriorityDispatchDeterminant				Simple	8	Priority Dispatch medical determinant code – <b>Example:</b> 10D01
CADExport	EventDetails	LocationTypeCode				Simple	1	1 for address, 2 for intersections
CADExport	EventDetails	StreetNumber				Simple	8	<b>Example:</b> 100
CADExport	EventDetails	StreetDirection				Simple	2	<b>Example:</b> N
CADExport	EventDetails	StreetName				Simple	60	<b>Example:</b> MAIN
CADExport	EventDetails	StreetType				Simple	4	<b>Example:</b> ST
CADExport	EventDetails	StreetPostDirection				Simple	4	<b>Example:</b> NW
CADExport	EventDetails	ApartmentSuite				Simple	15	String value immediately following street number dash – <b>Example:</b> 100-F N MAIN ST

Root Element	Level 1	Level 2	Level 3	Level 4	Level 5	Element Type	Size	Comments
CADEExport	EventDetails	CityCode				Simple	3	CAD city code
CADEExport	EventDetails	CityCodeDescription				Simple	20	City code description
CADEExport	EventDetails	State				Simple	2	CAD State
CADEExport	EventDetails	ZipCode				Simple	5	Zip code
CADEExport	EventDetails	SiteName				Simple	30	Business site name
CADEExport	EventDetails	SiteCADKey				Simple	int	CAD business site key
CADEExport	EventDetails	SiteTypeCode				Simple	4	CAD site type code
CADEExport	EventDetails	XStreetDirection				Simple	2	For intersecting address – <b>Example:</b> N
CADEExport	EventDetails	XStreetName				Simple	60	For intersecting address – <b>Example:</b> FIRST
CADEExport	EventDetails	XStreetType				Simple	4	For intersecting address – <b>Example:</b> ST
CADEExport	EventDetails	XStreetPostDirection				Simple	4	For intersecting address – <b>Example:</b> SW
CADEExport	EventDetails	EventLatitude				Simple	12	<b>Example:</b> 35.94775833
CADEExport	EventDetails	EventLongitude				Simple	12	<b>Example:</b> 80.03589722
CADEExport	EventDetails	SPGeox				Simple		State plane coordinate <b>Example:</b> 1693391.75
CADEExport	EventDetails	SPGeoy				Simple		State plane coordinate <b>Example:</b> 801481.94
CADEExport	EventDetails	DMSLatitude				Simple		Degrees, minutes, and seconds <b>Example:</b> 35 56 52.17 N
CADEExport	EventDetails	DMSLongitude				Simple		Degrees, minutes, and seconds <b>Example:</b> 80 2 9.25 W

Root Element	Level 1	Level 2	Level 3	Level 4	Level 5	Element Type	Size	Comments
CADEExport	EventDetails	DMMLatitude				Simple		Degree and decimal minutes <b>Example:</b> 35 56.870 N
CADEExport	EventDetails	DMMLongitude				Simple		Degree and decimal minutes <b>Example:</b> 80 2.1545 W
CADEExport	EventDetails	USNGCoord				Simple		USNG coordinates <b>Example:</b> 14RPU5148484595
CADEExport	EventDetails	AdditionalAddressInfo				Simple	60	Additional address field information (CAD addtst field)
CADEExport	EventDetails	EventStartTime				Simple	19	Time CAD event was started
CADEExport	EventDetails	FirstDispatchTime				Simple	19	First dispatch time
CADEExport	EventDetails	FirstEnrouteTime				Simple	19	First enroute time
CADEExport	EventDetails	FirstOnSceneTime				Simple	19	First arrive time
CADEExport	EventDetails	UnderControlTime				Simple	19	Requires the use of CAD <b>UC</b> command
CADEExport	EventDetails	LastUnitClearTime				Simple	19	Last unit cleared from CAD event
CADEExport	EventDetails	FirstTransportTime				Simple	19	First recorded transport time
CADEExport	EventDetails	LastTransportArriveTime				Simple	19	Last recorded transport destination arrive time
CADEExport	EventDetails	EventCompletedTime				Simple	19	When the event was completed and closed
CADEExport	EventDetails	LastExportTime				Simple	19	This files last update time
CADEExport	EventDetails	PatientContactTime				Simple	19	Requires the use of CAD <b>AP</b> command
CADEExport	EventDetails	EventDistrict				Simple	19	Event location district
CADEExport	EventDetails	EventGeoProximity				Simple	4	Event geo proximity
CADEExport	EventDetails	ReclassifiedNatureCode				Simple	6	Reclassified nature code
CADEExport	EventDetails	ReclassifiedNatureCodeDescription				Simple	30	Reclassified nature full description

Root Element	Level 1	Level 2	Level 3	Level 4	Level 5	Element Type	Size	Comments
CADExport	EventDetails	EventStation				Simple	4	Event location station (for EMS and Fire only)
CADExport	EventDetails	EventBeat				Simple	4	Event location beat
CADExport	EventDetails	EventReportingArea				Simple	4	Event reporting area
CADExport	EventDetails	CadResponsePlan				Simple	4	CAD response plan
CADExport	EventDetails	CadResponsePlanCategory				Simple	4	CAD response plan category
CADExport	EventDetails	CallerName				Simple	75	Initial caller name
CADExport	EventDetails	CallerAddress				Simple	60	Initial caller address
CADExport	EventDetails	CallerNumber				Simple	10	Initial caller phone number
CADExport	EventDetails	CallSource				Simple	5	CAD call source – <b>Example:</b> Phone, 911, Alarm, Etc.
CADExport	EventDetails	E911Used				Simple	1	E911 used
CADExport	EventDetails	CallTakerUserId				Simple	100	Initial call taker user ID
CADExport	EventDetails	CallTakerName				Simple	100	Initial call taker name
CADExport	EventDetails	DispatcherUserId				Simple	100	Initial dispatcher user ID
CADExport	EventDetails	DispatcherName				Simple	100	Initial dispatcher name
CADExport	EventDetails	EventDispositionCode				Simple	4	Event disposition code
CADExport	EventDetails	FirstAgencyArriveTime				Simple	19	First agency arrive time (Including linked events)
CADExport	EventDetails	CadNotes				Simple		CAD notes as stored in CAD at time of export.
CADExport	EventDetails	LinkedEvents				Complex		
CADExport	EventDetails	LinkedEvents	Event			Complex		

Root Element	Level 1	Level 2	Level 3	Level 4	Level 5	Element Type	Size	Comments
CADExport	EventDetails	Linked Events	Event	AgencyCode		Simple	4	Linked agency code
CADExport	EventDetails	LinkedEvents	Event	ServiceType		Simple	14	Linked agency service type <b>Example:</b> Law, Fire, EMS, Rescue
CADExport	EventDetails	LinkedEvents	Event	ReportNumber		Simple	14	Linked agency report number – <b>Example:</b> 20131234567
CADExport	EventDetails	LinkedEvents	Event	CADIncIncNumber		Simple	14	Linked agency incident (serial) number – <b>Example:</b> 20131234567
CADExport	EventUnits					Complex		
CADExport	EventUnits	Unit				Complex		
CADExport	EventUnits	Unit	UnitCode			Simple	6	CAD unit code
CADExport	EventUnits	Unit	DispatchTime			Simple	19	Dispatch time
CADExport	EventUnits	Unit	EnRouteTime			Simple	19	En route time
CADExport	EventUnits	Unit	ArriveTime			Simple	19	Arrive time
CADExport	EventUnits	Unit	TransportTime			Simple	19	Transport time
CADExport	EventUnits	Unit	TransportArriveTime			Simple	19	Transport arrive time. Uses the units A or H time that follows the unit's T time.
CADExport	EventUnits	Unit	TransportLocation			Simple	40	Transport location
CADExport	EventUnits	Unit	TransportTrafficCode			Simple	1	Transport traffic to hospital (E)mergency or (N)on Emergency, as entered in CAD using the CAD transport command.
CADExport	EventUnits	Unit	ReturnToServiceTime			Simple	19	Available time. Uses the CAD C or S time, whichever occurs first



Root Element	Level 1	Level 2	Level 3	Level 4	Level 5	Element Type	Size	Comments
CADExport	EventUnits	Unit	ClearTime			Simple	19	Clear from event time
CADExport	EventUnits	Unit	ReturnToQuarters			Simple	19	Return to quarters time. Uses the CAD <b>R</b> command
CADExport	EventUnits	Unit	InQuatersTime			Simple	19	In quarters time. Uses the CAD <b>Q</b> command
CADExport	EventUnits	Unit	CancelledFromEventFlag			Simple	1	Flag to indicate whether the unit was cancelled from the event using the CAD <b>X</b> command. T=True Blank or F=False.
CADExport	EventUnits	Unit	CancelTime			Simple	19	Cancel time if unit was cancelled from event using the CAD <b>X</b> command
CADExport	EventUnits	Unit	HomeBeatStation			Simple	4	Home beat or station for unit
CADExport	EventUnits	Unit	UnitDisposition			Simple	4	Units individual disposition code
CADExport	EventUnits	Unit	UnitX			Simple	12	Longitude for unit location at dispatch. This is the last recorded GPS location for the unit prior to dispatch. Requires AVL <b>Example:</b> 35.94775833
CADExport	EventUnits	Unit	UnitY			Simple	12	Latitude for unit location at dispatch. This is the last recorded GPS location for the unit prior to dispatch. Requires AVL <b>Example:</b> 80.03589722

Root Element	Level 1	Level 2	Level 3	Level 4	Level 5	Element Type	Size	Comments
CADExport	EventUnits	Unit	TransferOfPatientCare			Simple	20	Transfer of Care time stamp. Must be enabled in configuration for inclusion in export. CAD dispatcher must apply timestamp to the unit.
CADExport	EventUnits	Unit	TransportStartMileage			Simple	10	Unit transport start mileage as recorded in CAD
CADExport	EventUnits	Unit	TransportEndMileage			Simple	10	Unit transport end mileage as recorded in CAD.
CADExport	EventUnits	Unit	TransportTotalMileage			Simple	10	The total miles for the transport
CADExport	EventUnits	Unit				Complex		
CADExport	EventUnits	Unit	Personnel	Person		Complex		
CADExport	EventUnits	Unit	Personnel	Person	EmployeeKey	Simple	int	Primary CAD employee key
CADExport	EventUnits	Unit	Personnel	Person	CadEmployee DeptId	Simple	10	Assigned Department ID
CADExport	EventUnits	Unit	Personnel	Person	FullName	Simple	63	Employee name assigned to the unit
CADExport	RelatedNames					Complex		
CADExport	RelatedNames	Name				Complex		
CADExport	RelatedNames	Name	CadNameID			Simple	int	CAD name record key
CADExport	RelatedNames	Name	Type			Simple	4	Name type <b>Example:</b> (S)uspect, (V)ictim, (C)aller, and so on
CADExport	RelatedNames	Name	LastName			Simple	40	Last name <b>Example:</b> SMITH

Root Element	Level 1	Level 2	Level 3	Level 4	Level 5	Element Type	Size	Comments
CAExport	RelatedNames	Name	FirstName			Simple	20	First name <b>Example:</b> JOHN
CAExport	RelatedNames	Name	MiddleName			Simple	15	Middle name <b>Example:</b> EDWARD
CAExport	RelatedNames	Name	Suffix			Simple	5	Name suffix <b>Example:</b> JR
CAExport	RelatedNames	Name	StreetNumber			Simple	8	<b>Example:</b> 104
CAExport	RelatedNames	Name	StreetName			Simple	60	<b>Example:</b> PENNEY RD
CAExport	RelatedNames	Name	Apartment			Simple	10	<b>Example:</b> 1A
CAExport	RelatedNames	Name	City			Simple	40	City name <b>Example:</b> HIGH POINT
CAExport	RelatedNames	Name	State			Simple	2	State <b>Example:</b> NC
CAExport	RelatedNames	Name	ZipCode			Simple	10	ZIP code <b>Example:</b> 27262
CAExport	RelatedNames	Name	HomePhone			Simple	10	Home phone number. <b>Example:</b> 3368850911
CAExport	RelatedNames	Name	WorkPhone			Simple	10	Work phone number <b>Example:</b> 3364429745
CAExport	RelatedNames	Name	MobilePhone			Simple	10	Mobile phone number <b>Example:</b> 3368782345
CAExport	RelatedNames	Name	DateOfBirth			Simple	19	Date of birth
CAExport	RelatedNames	Name	Age			Simple	2	Age at time of record entry

Root Element	Level 1	Level 2	Level 3	Level 4	Level 5	Element Type	Size	Comments
CADExport	RelatedNames	Name	Race			Simple	2	Race
CADExport	RelatedNames	Name	Sex			Simple	1	Sex
CADExport	RelatedNames	Name	Height			Simple	4	Height <b>Example:</b> 507
CADExport	RelatedNames	Name	Weight			Simple	int	Weight
CADExport	RelatedNames	Name	EyeColor			Simple	4	Eye color
CADExport	RelatedNames	Name	OperatorLicenseNumber			Simple	25	Operator license number
CADExport	RelatedNames	Name	OperatorLicenseState			Simple	2	Operator license state
CADExport	RelatedNames	Name	Notes			Simple		Name record notes
CADExport	RelatedVehicles					Complex		
CADExport	RelatedVehicles	Vehicle				Complex		
CADExport	RelatedVehicles	Vehicle	VehicleID			Simple	int	CAD vehicle record key
CADExport	RelatedVehicles	Vehicle	LicensePlateNumber			Simple	10	License plate number
CADExport	RelatedVehicles	Vehicle	LicensePlateState			Simple	2	License plate state
CADExport	RelatedVehicles	Vehicle	LicensePlateType			Simple	4	License plate type

Root Element	Level 1	Level 2	Level 3	Level 4	Level 5	Element Type	Size	Comments
CADEXport	RelatedVehicles	Vehicle	LicensePlateYear			Simple	int	License plate year
CADEXport	RelatedVehicles	Vehicle	VehicleType			Simple	4	Vehicle type
CADEXport	RelatedVehicles	Vehicle	VehicleYear			Simple	int	Vehicle year
CADEXport	RelatedVehicles	Vehicle	VehicleMake			Simple	4	Vehicle make
CADEXport	RelatedVehicles	Vehicle	VehicleModel			Simple	12	Vehicle model
CADEXport	RelatedVehicles	Vehicle	VehicleColor1			Simple	4	Vehicle color 1
CADEXport	RelatedVehicles	Vehicle	VehicleColor2			Simple	4	Vehicle color 2
CADEXport	RelatedVehicles	Vehicle	VehicleIdNumber			Simple	30	VIN
CADEXport	RelatedVehicles	Vehicle	Notes			Simple		Vehicle record notes