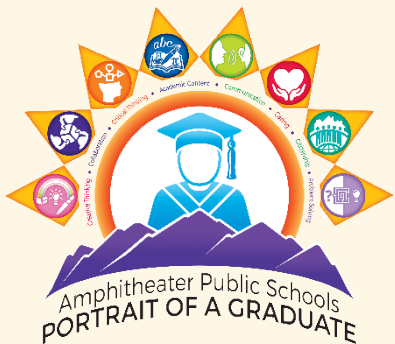




Superintendent's Report to the Governing Board

September 28, 2021





Around the Schools



Athletics are a big part of the high school experience for many of our students. Fall sports are underway. Here we see the Amphi High Football team (photo courtesy of Andy Morales), the CDO cross-country team, and the Ironwood Ridge varsity cheer team.





Around the Schools



Keeling Elementary School had their first Spirit Assembly of the year. Awards, recognitions, and competitions filled the room as the Keeling Cougars brought their school spirit in full force!



The District's Legendary Teacher Day honoree with her English Language Arts class at Wilson K-8.



Around the Schools



Many of our schools are having Spirit Weeks – some last week and some next. Here, we have Hat Day at Prince Elementary School and Stuffed Animal Day at Amphi Middle School. We hope we get to see some pictures from Wilson K-8's spirit week, especially Bad Fashion Day tomorrow!



Around the Schools



Holaway



Ironwood Ridge



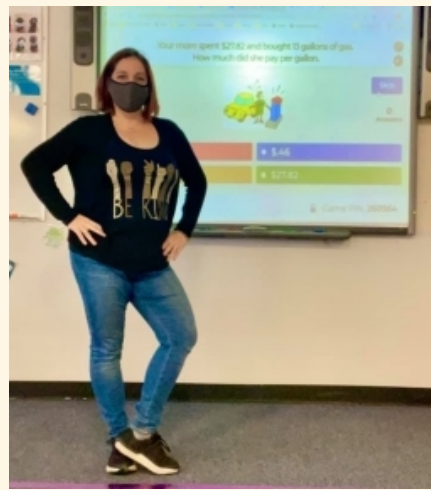
Cross



Payroll



Donaldson



La Cima



Graphics & Printing

The District held its second Feel-Good Friday last week. Each month, we invite Amphitheater staff to wear a shirt with a positive message. Thanks to all who participated for the smiles and good vibes.



Pima County Metrics -- As of 9/23/21

Disease Data

Cases over two consecutive weeks (with complete reporting of cases)

Criteria not met

Progress

Criteria met

Percent Positivity

COVID-19 like illness

Health Care System Availability

Lab Testing Availability and Utilization

Hospital Bed Capacity

Sufficient Personal Protective Equipment (PPE) for Emergency Responders

Criteria not met

Progress

Criteria met

Public Health Tracking and Investigation

Timely case investigation

Testing of symptomatic contacts within 48 hours

Facilities/support for patients who can't be discharged home - Statewide

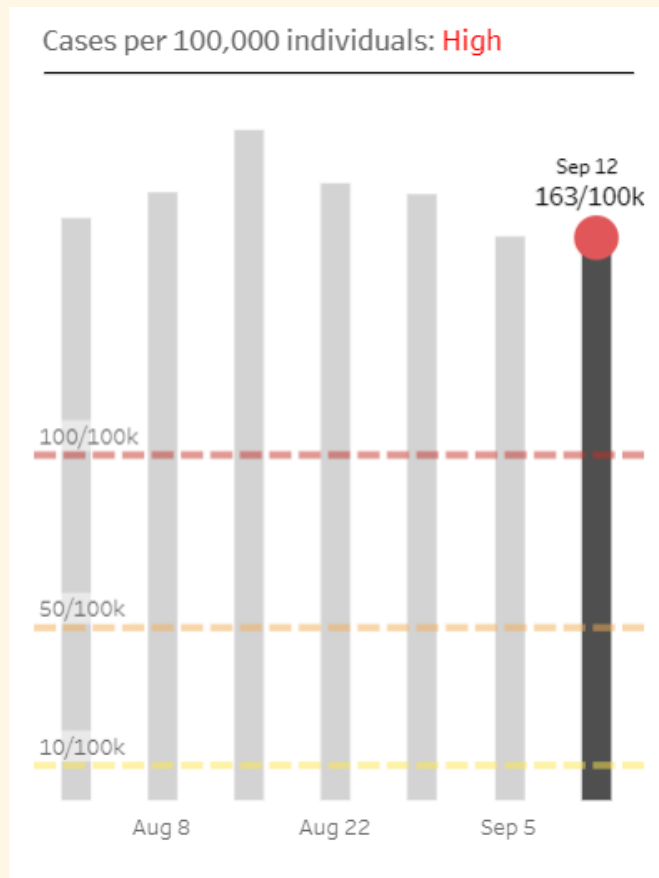
Criteria not met

Progress

Criteria met

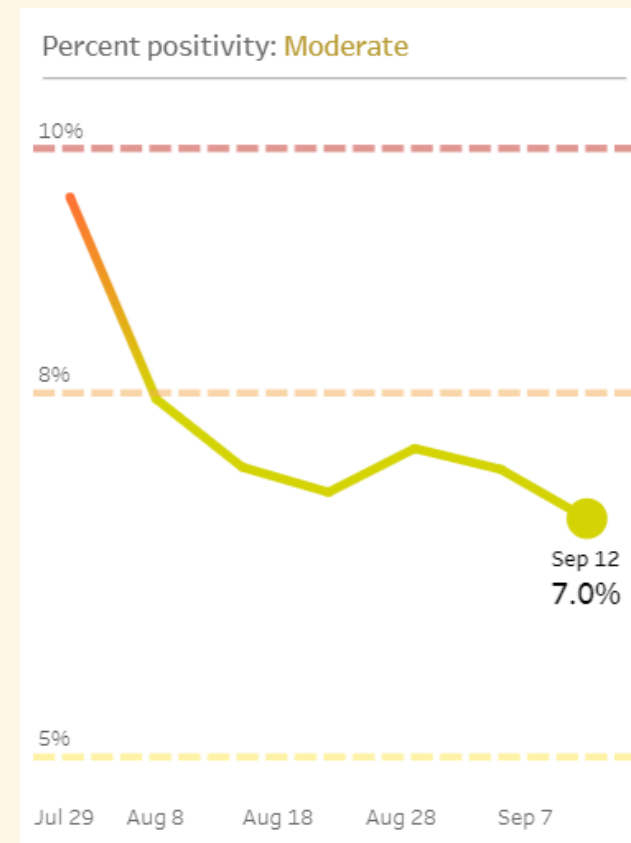


AZDHS Data for Pima County (9/23/21)



Week of September 5: 163 cases per 100K population
 Week of August 29: 175 cases
 Week of August 22: 178 cases
 Week of August 15: 194 cases

Week of September 5: Test positivity rate = 7.4%
 August 29: = 7.5%
 Week of August 22: 7.2%
 Week of August 15: 7.4%
 Week of August 8: 7.9%





Current Pima County Transmission Level: High

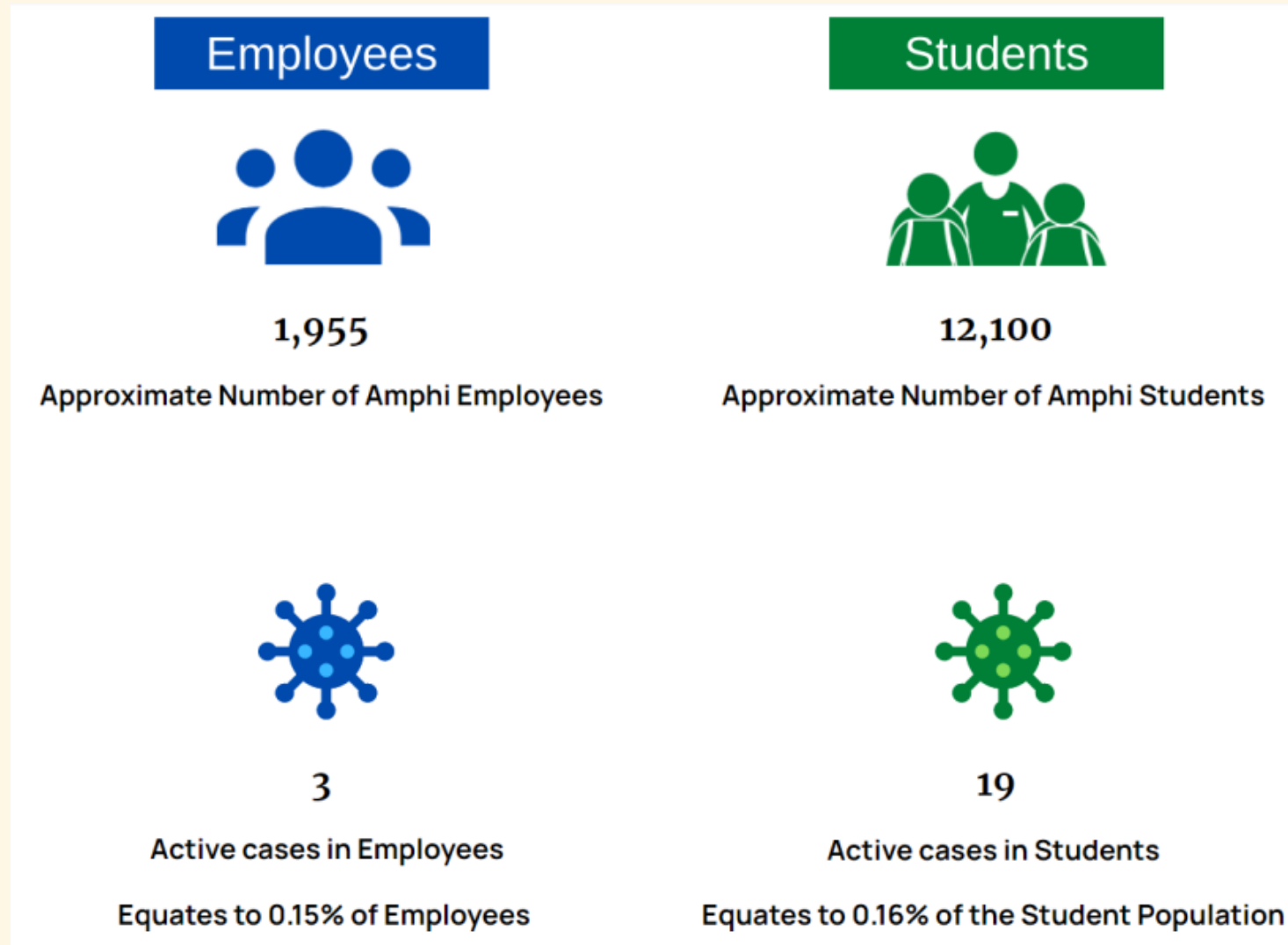
Indicator	Low Transmission	Moderate Transmission	Substantial Transmission	High Transmission
Total new cases per 100,000 persons in the last 7 days	0 - 9	10 - 49	50 - 99	≥ 100
Percentage of nucleic acid amplification tests (NAATs) that are positive during the past 7 days	<5.0%	5.0% - 7.9%	8.0% - 9.9%	≥ 10.0%

↑
Percent of Positivity (7.0%)

↑
Cases per 100 K (163)



District COVID Dashboard





District COVID-19 Dashboard

Confirmed Case Data as of this morning (includes staff and students) (22 cases currently):

- Amphitheater High School 4
- Amphitheater Middle School 1
- Canyon del Oro High School 4
- Coronado K-8 School 4
- Cross Middle School 1
- Ironwood Ridge High School 2
- Keeling Elementary School 1
- La Cima Middle School 1
- Nash Elementary School 1
- Prince Elementary School 2
- Wetmore District Office 1
- All Other District Sites 0



School Cases – Pima County

School Cases

As reported since July 20, 2021.

Total cases: 947

Outbreaks: 33

Last updated: 8/23/21, 2:05 p.m.

District/category	Cases
Altar Valley	<10
Amphitheater	99
Catalina Foothills	11
Continental	<10
Flowing Wells	23
Marana	184
Sahuarita	42
Sunnyside	68
Tanque Verde	16
Tucson Unified	139
Vail	197
Other	157

School Cases

As reported since July 20, 2021.

Updated Tuesdays & Fridays

Total cases: 1,884

Outbreaks: 66

Last updated: 9/14/21, 9:30 a.m.

District/category	Cases
Amphitheater	203
Catalina Foothills	37
Continental	<10
Flowing Wells	61
Marana	270
Sahuarita	90
Sunnyside	163
Tanque Verde	24
Tucson Unified	403
Vail	256
Other	322

School Cases

As reported since July 20, 2021.

Updated Tuesdays & Thursdays.

Total cases: 2,163

Outbreaks: 71

Last updated: 9/21/21, 11:40 a.m.

District/category	Cases
Amphitheater	237
Catalina Foothills	41
Continental	<10
Flowing Wells	68
Marana	297
Sahuarita	103
Sunnyside	189
Tanque Verde	27
Tucson Unified	484
Vail	310
Other	400

School Cases

As reported since July 20, 2021.

Updated Tuesdays & Thursdays.

Total cases: 2,455

Outbreaks: 81

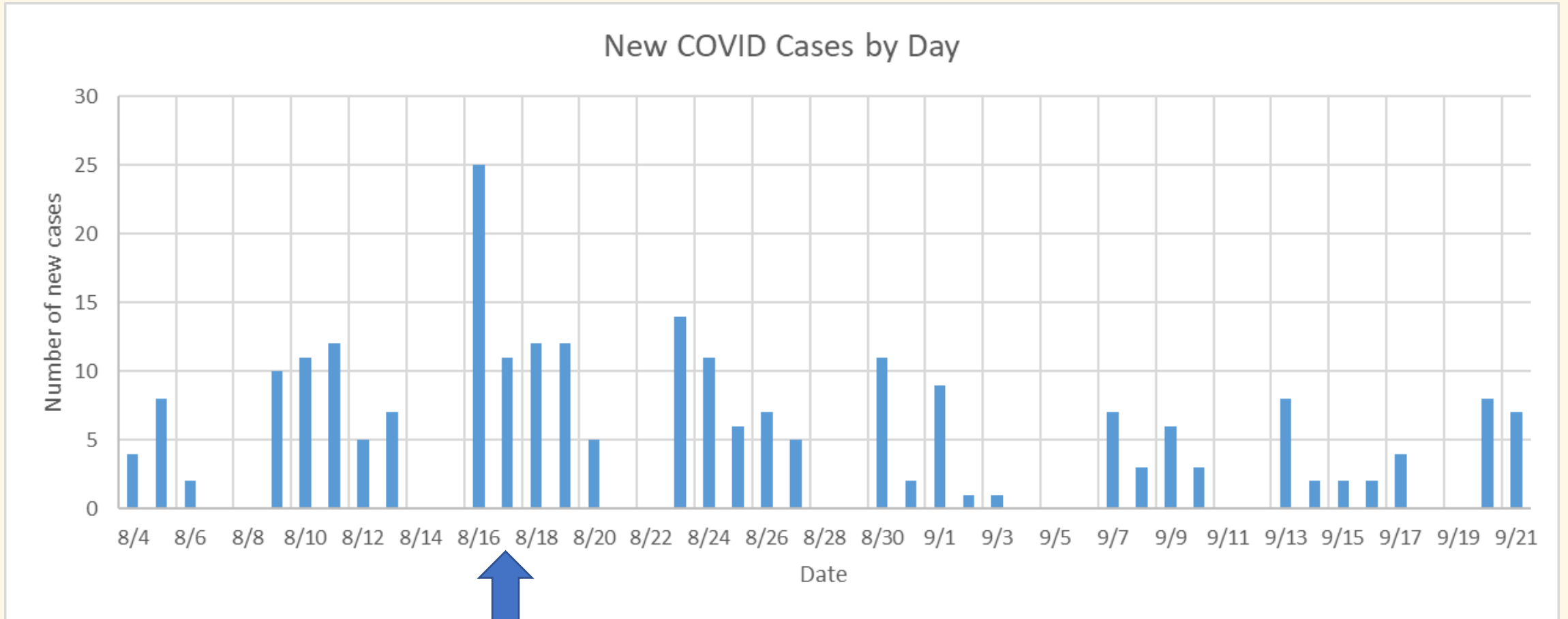
Last updated: 9/28/21, 10:15 a.m.

District/category	Cases
Amphitheater	265
Catalina Foothills	46
Continental	13
Flowing Wells	79
Marana	310
Sahuarita	112
Sunnyside	208
Tanque Verde	27
Tucson Unified	592
Vail	346
Other	457

Source: PCHD



District New Cases by Day (Current School Year)



Masking reinstated



“The Mask Case” Status



- Case pending in Maricopa County Superior Court



- Judge previously ruled that the September 29, 2021 effective date (but retro to July 1, 2021) was unconstitutional



- Decided yesterday: mask requirement prohibition and other non-budgetary matters included in the budget bill violated the state constitution’s single subject bill requirement



- Appeal(s) may be forthcoming, but decision stands for now, as will our District’s universal indoor masking requirement





Three CDC Studies on Masks – 9/24/21



- Morbidity and Mortality Weekly Report



- Emphasized layered prevention strategies including universal masking
- All three studies found that school districts without a universal masking policy in place were more likely to have COVID-19 outbreaks



- Nationwide, counties without masking requirements saw the number of pediatric COVID-19 cases increase nearly twice as quickly as those with requirements



- In Arizona specific study, schools in Maricopa and Pima counties were 3.5 times more likely to have COVID-19 outbreaks if they did not have a mask requirement at the start of school compared with schools that required universal masking on day one



- Another report found that during the two weeks following the start of school, the average change in pediatric COVID-19 case rates was lower among counties with school mask requirements (16.32 per 100,000/day) compared with counties without school mask requirements (34.85 cases per 100,000/day)





A Call for Grace and Care for One Another



- Differing views abound. We need to understand and have patience.



- Take masks:

- Initially, limited evidence supported broad masking policies, and the CDC recommended them only for the infected and medical providers
- On April 3, 2020, the CDC reversed course and recommended everyone wear face coverings in public, citing new data that a significant portion of people infected with COVID-19 can lack symptoms but still spread the virus
- Since then, evidence has grown supporting the use of masks to slow spread
- Rumors abound, and we must seek truths
- Look to sites like [FactCheck.org](https://www.factcheck.org/) for honest, neutral reviews of information
- Bottom line: the vast majority of health care leaders are recommending masks, and schools are not equipped or qualified to ignore their guidance



- We must therefore continue to err – if erring at all – in a manner that protects the health and safety of everyone

