



ROSEVILLE AREA SCHOOLS

Graduation and Postsecondary Report

June 24, 2025



District Goals & Key Strategies



District Goal #1

**Our graduates are prepared
to achieve their goals and aspirations.**

Strategies

- **Ensure students are college and career ready.**
- **Deliver a challenging, joyful, and safe learning environment**
- **Deliver innovative, effective practices and systems**

District Goal #2

Our learners contribute to an equitable, caring society.

Strategies

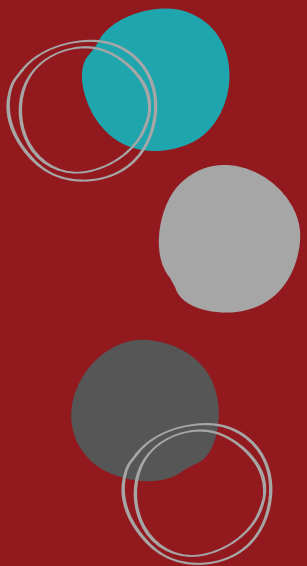
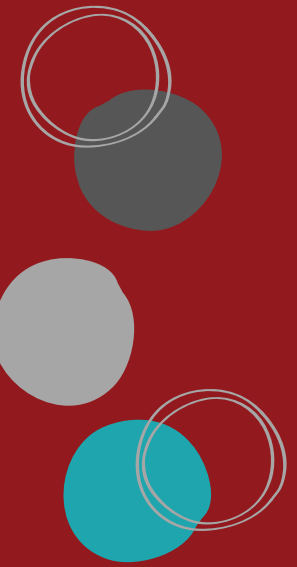
- Cultivate student engagement and joy in learning
- Amplify student leadership and voice in decision making
- **Prepare learners to be racially and socially responsive**

District Goal #3

**We are a culturally responsive,
inclusive, anti-racist district.**

Strategies

- Build a culture of belonging where all feel welcome, included, and safe

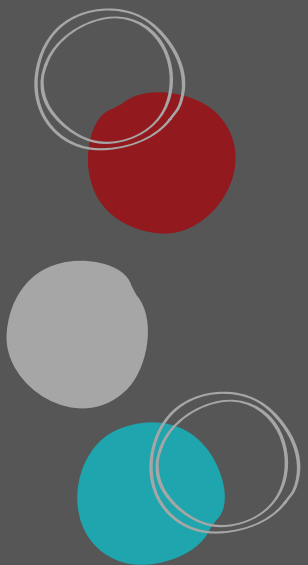
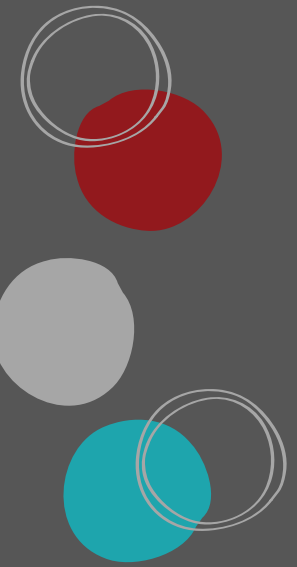


District Goal #4

The community is united behind meeting student needs.

Strategies

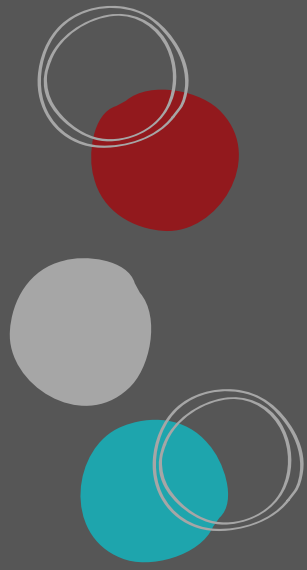
- Partner with families and the community to support student success





Graduation 2024





Graduation Data

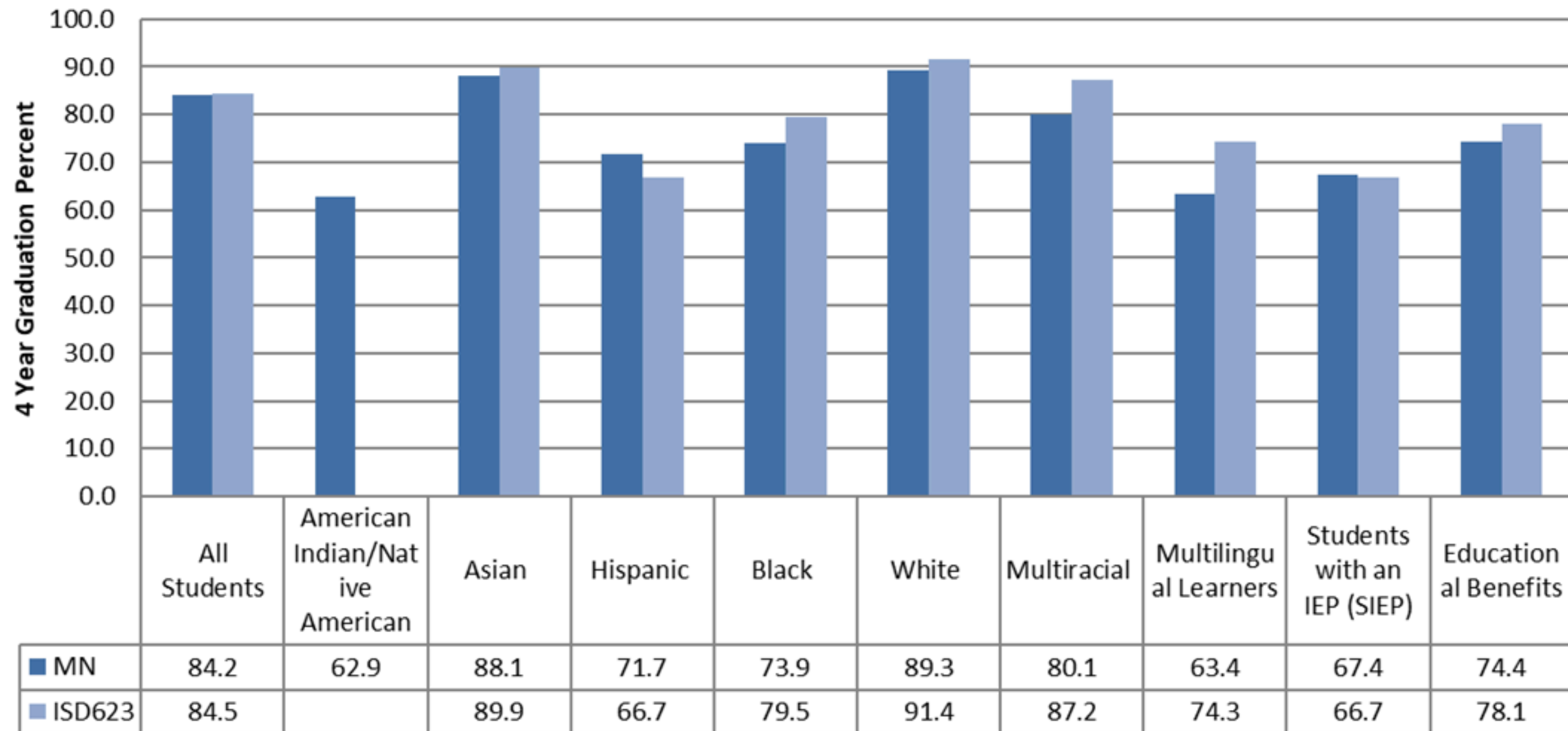
4-year cohort format

9th graders in school year 2020-21

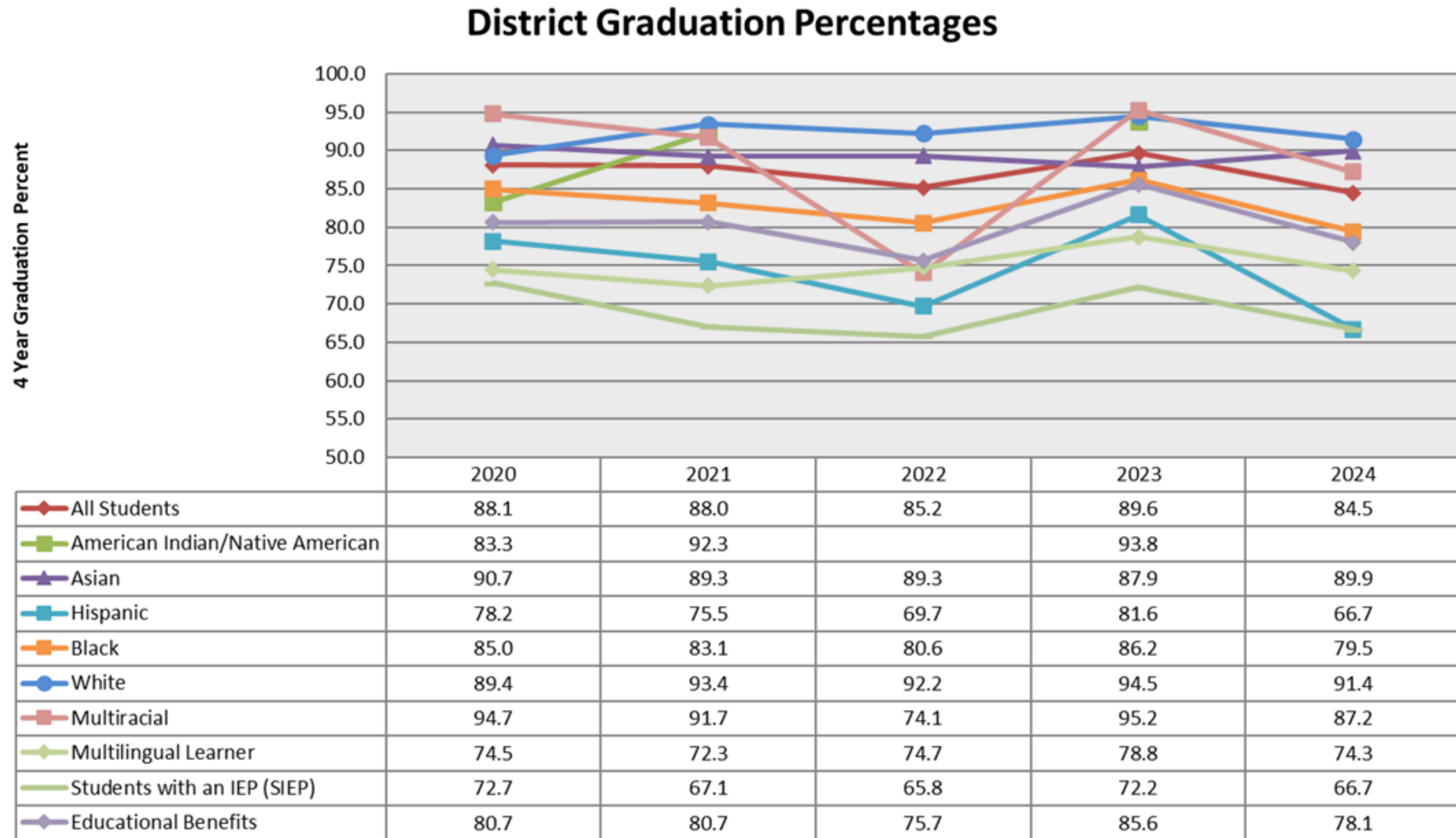
**District data: Roseville Area High School, Fairview
Alternative High School, and Adult Basic Education**

RAS compared to State

2024: 4 Year Graduation Data- MN and ISD 623



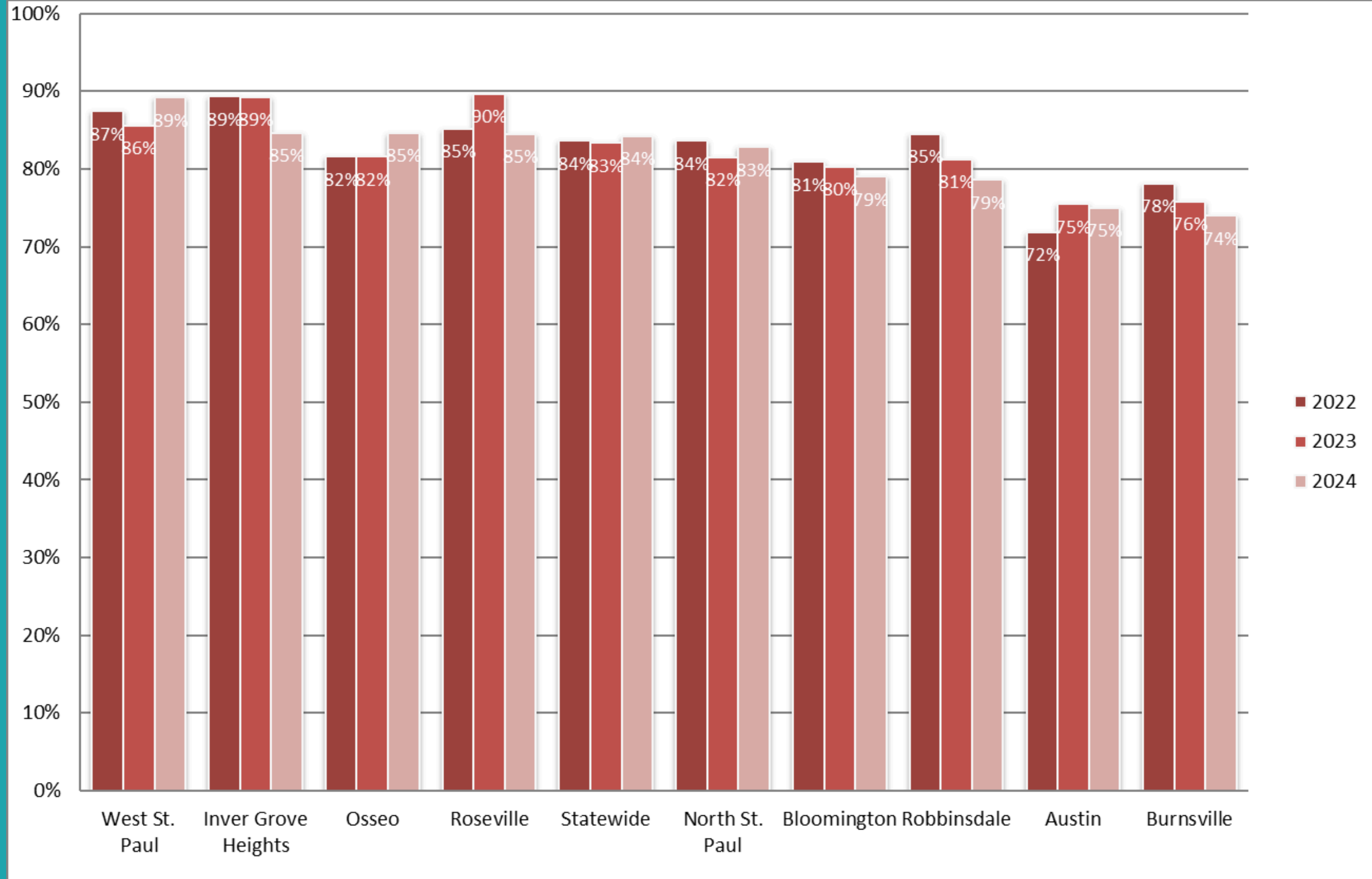
4 Year Graduation by Student Group



Graduation Data- Number of Students

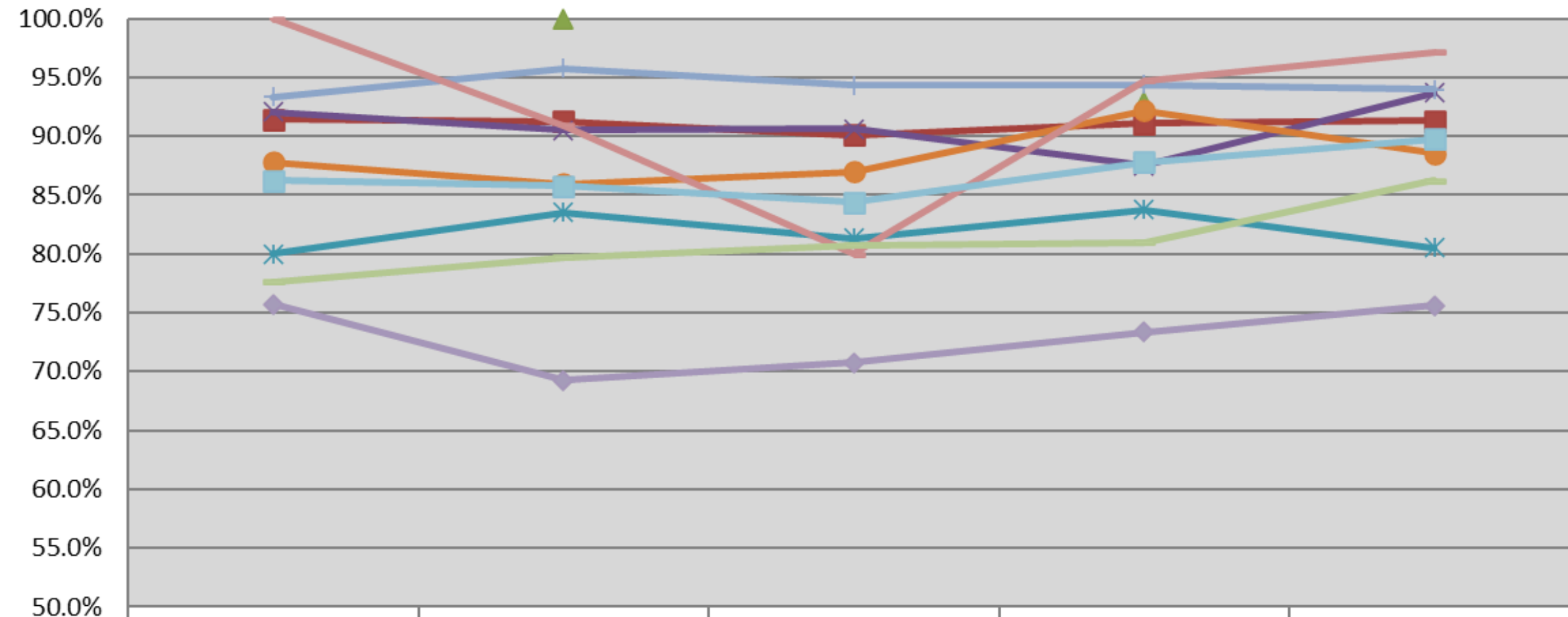
	<u>2020</u>	<u>2021</u>	<u>2022</u>	<u>2023</u>	<u>2024</u>
All Students	503	513	524	528	540
American Indian	10	12	*	15	*
Asian	117	108	92	94	107
Black	79	69	87	106	89
Hispanic	43	74	69	71	70
Multiracial	36	33	20	20	34
White	227	227	249	222	235
Students with an IEP (SIEP)	56	59	46	57	62
Educational Benefits	250	239	200	268	249
Multilingual Learner	70	68	63	51	52

Comparable Districts



RAHS 4 Year Graduation

RAHS 4 Year Graduation Percentages



■ All Students	2020	2021	2022	2023	2024
▲ American Indian/Native American		100.0%		92.9%	
✕ Asian	92.1%	90.5%	90.6%	87.5%	93.7%
✱ Hispanic	80.0%	83.5%	81.3%	83.8%	80.5%
● Black/African American	87.8%	85.9%	87.0%	92.2%	88.5%
+ White	93.3%	95.7%	94.3%	94.4%	94.0%
— Multiracial	100.0%	90.9%	80.0%	94.7%	97.1%
— Multilingual Learners	77.7%	79.7%	80.8%	81.0%	86.2%
◆ Students with an IEP (SIEP)	75.7%	69.2%	70.8%	73.3%	75.6%
■ Educational Benefits	86.3%	85.8%	84.4%	87.8%	89.8%

RAHS 4 Year Graduation- Number of Students

	<u>2020</u>	<u>2021</u>	<u>2022</u>	<u>2023</u>	<u>2024</u>
All Students	480	489	502	502	524
American Indian/Native American Students	*	11	*	13	*
Asian Students	116	105	87	91	104
Black/African American Students	72	61	80	94	85
Hispanic Students	36	66	61	67	62
White Students	223	225	248	219	234
Multiracial	32	30	20	18	34
Students with an IEP (SIEP)	53	54	46	55	62
Educational Benefits	232	217	200	245	237
Multilingual Learners	66	59	63	51	50

FAHS 7 Year Graduation Data

FAHS Graduation Data- 7 Year Rate



FAHS Graduation Data

4 Year Graduation Category: All Students

	2015	2016	2017	2018	2019	2020	2021	2022	2023	2024
FAHS	23.2%	25.0%	44.7%	37.0%	50.0%	52.3%	53.3%	38.6%	72.2%	42.9%

5 Year Graduation Category: All Students

	2015	2016	2017	2018	2019	2020	2021	2022	2023	2024
FAHS	24.9%	44.0%	51.9%	71.7%	63.2%	73.5%	63.8%	72.1%	64.3%	82.9%

6 Year Graduation Category: All Students

	2015	2016	2017	2018	2019	2020	2021	2022	2023	2024
FAHS	63.0%	51.5%	52.1%	63.5%	77.3%	70.3%	77.6%	68.0%	74.4%	69.1%

7 Year Graduation Category: All Students

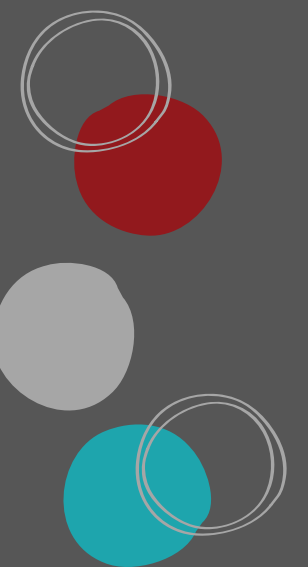
	2015	2016	2017	2018	2019	2020	2021	2022	2023	2024
FAHS	55.4%	68.0%	60.6%	53.2%	65.4%	77.3%	75.7%	79.2%	69.4%	74.4%



Graduation Data Summary

Roseville Area Schools

- Districtwide graduation percentage even with the state
- 5.1 percentage point decrease
- Most student groups performed above their statewide group
- District is among the top of comparables
- Students who did not graduate continued in school to complete credits, more than doubled from 3.1% to 7.0%





Graduation Data Summary

Roseville Area High School

- Slight increase from 2023
- Ranks 2nd among comparable districts
- Most student groups improved
- Asian and Multilingual students had largest increases

Fairview Alternative High School

- 7 year rate increase from previous year
 - 7 year rate has increased from 56% (2014) to 74% (2024)
 - 2nd among 9 comparables
- 



Postsecondary Data





Postsecondary Data Overview

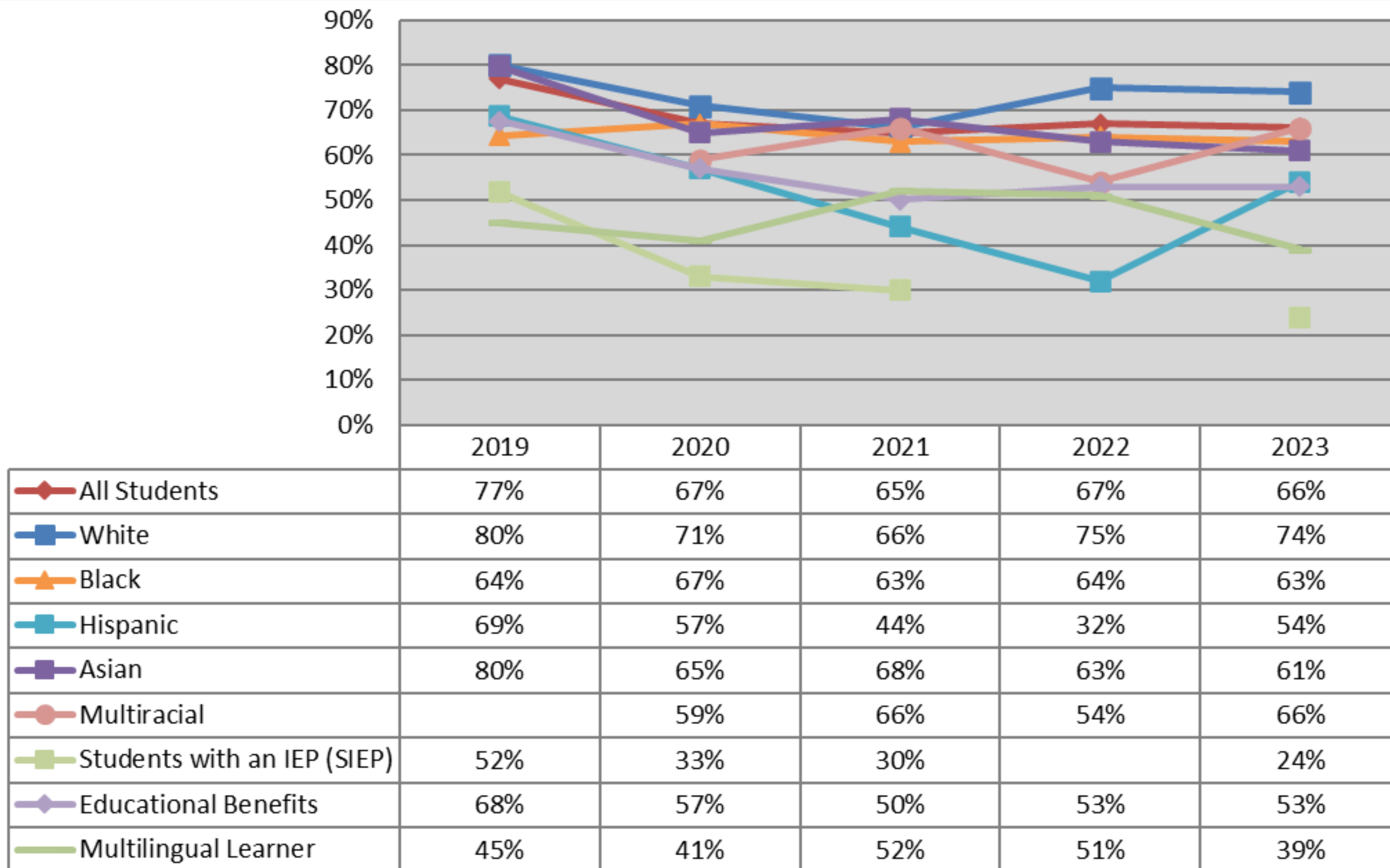
Postsecondary School Enrollment

Developmental Course Enrollment

Graduates Entering the Workforce



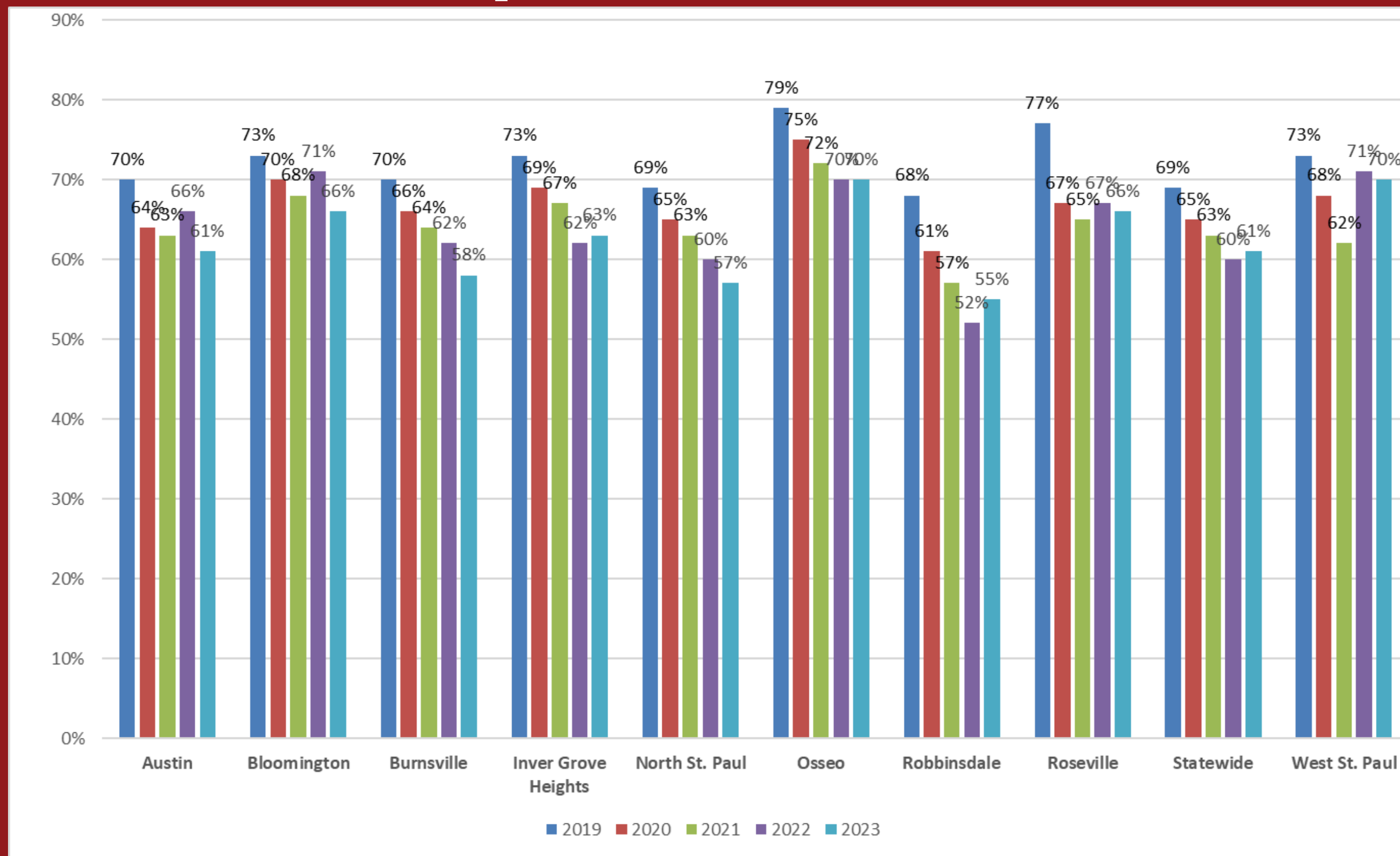
Enrollment in Postsecondary School



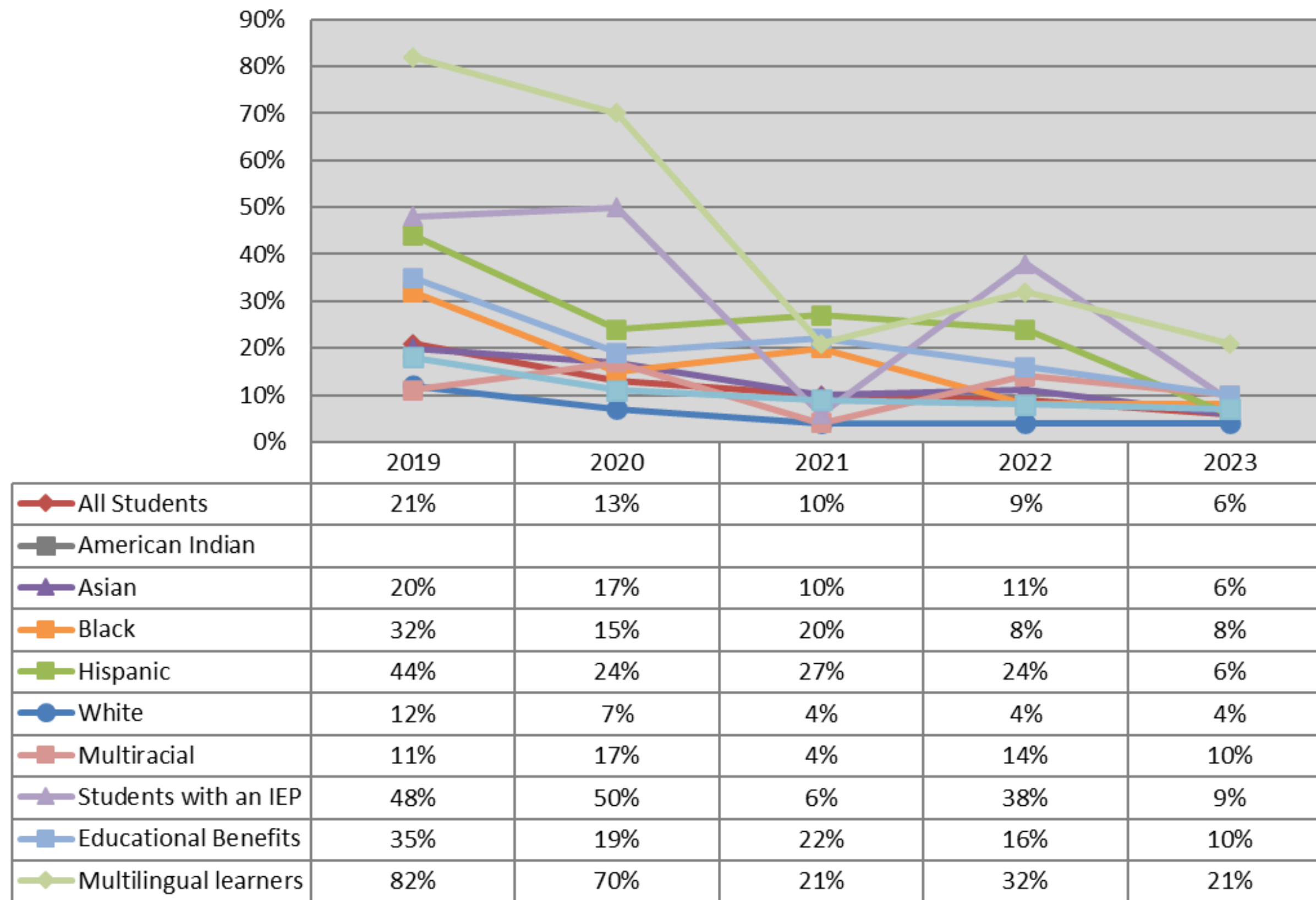
Enrollment in Postsecondary School- Number of Students

	<u>2019</u>	<u>2020</u>	<u>2021</u>	<u>2022</u>	<u>2023</u>
All Students	386	332	344	364	360
American Indian/Native American Students	*	*	*	*	*
Asian Students	83	85	76	61	57
Black/African American Students	47	62	48	58	69
Hispanic Students	35	21	34	25	44
White Students	217	160	154	191	167
Multiracial		23	21	13	21
Students with an IEP (SIEP)	15	14	16	*	13
Educational Benefits	115	106	91	91	136
Multilingual Learners	*	17	29	28	14

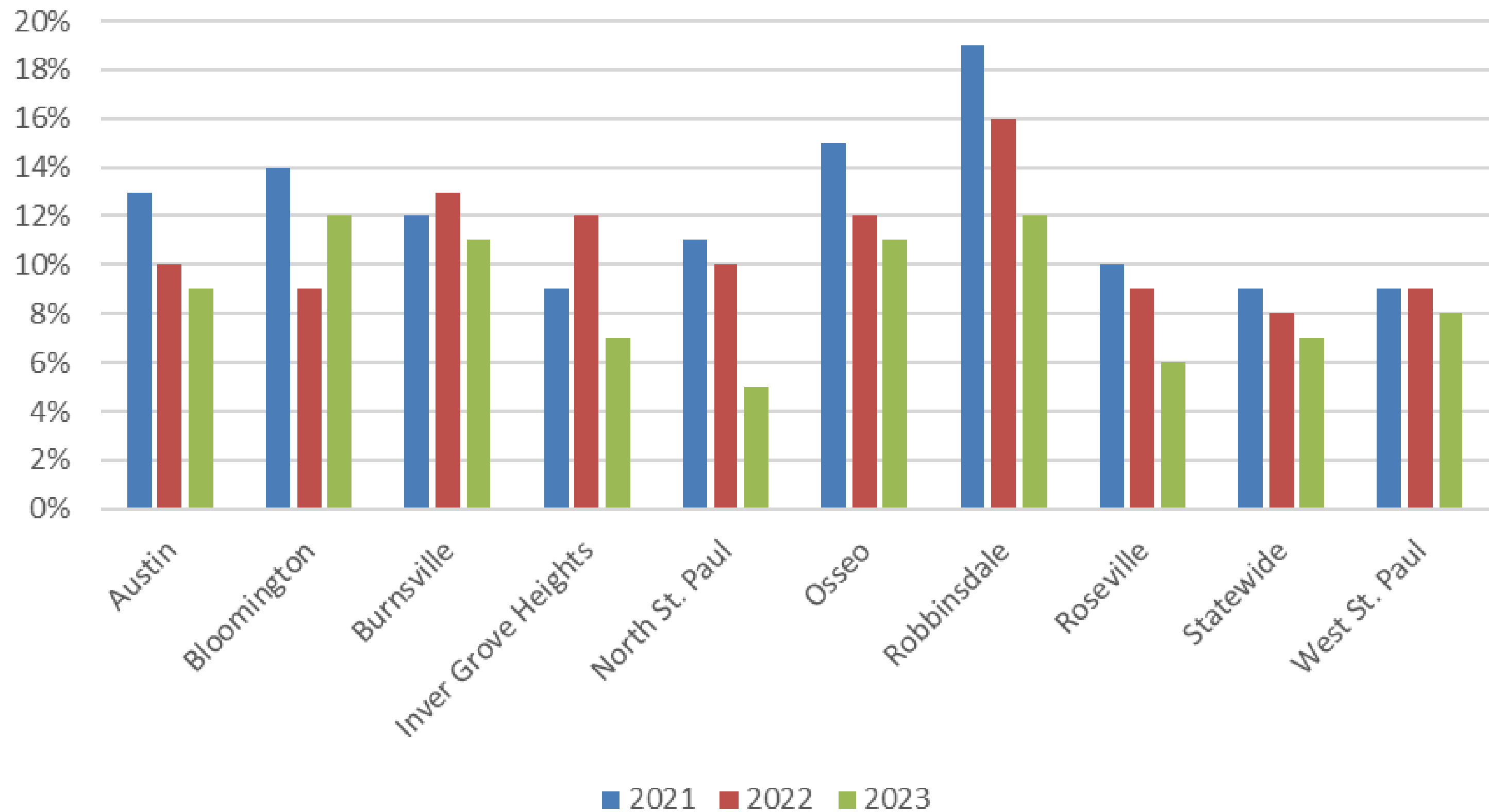
Enrollment in Postsecondary School-Comparable Districts



Developmental Course Enrollment

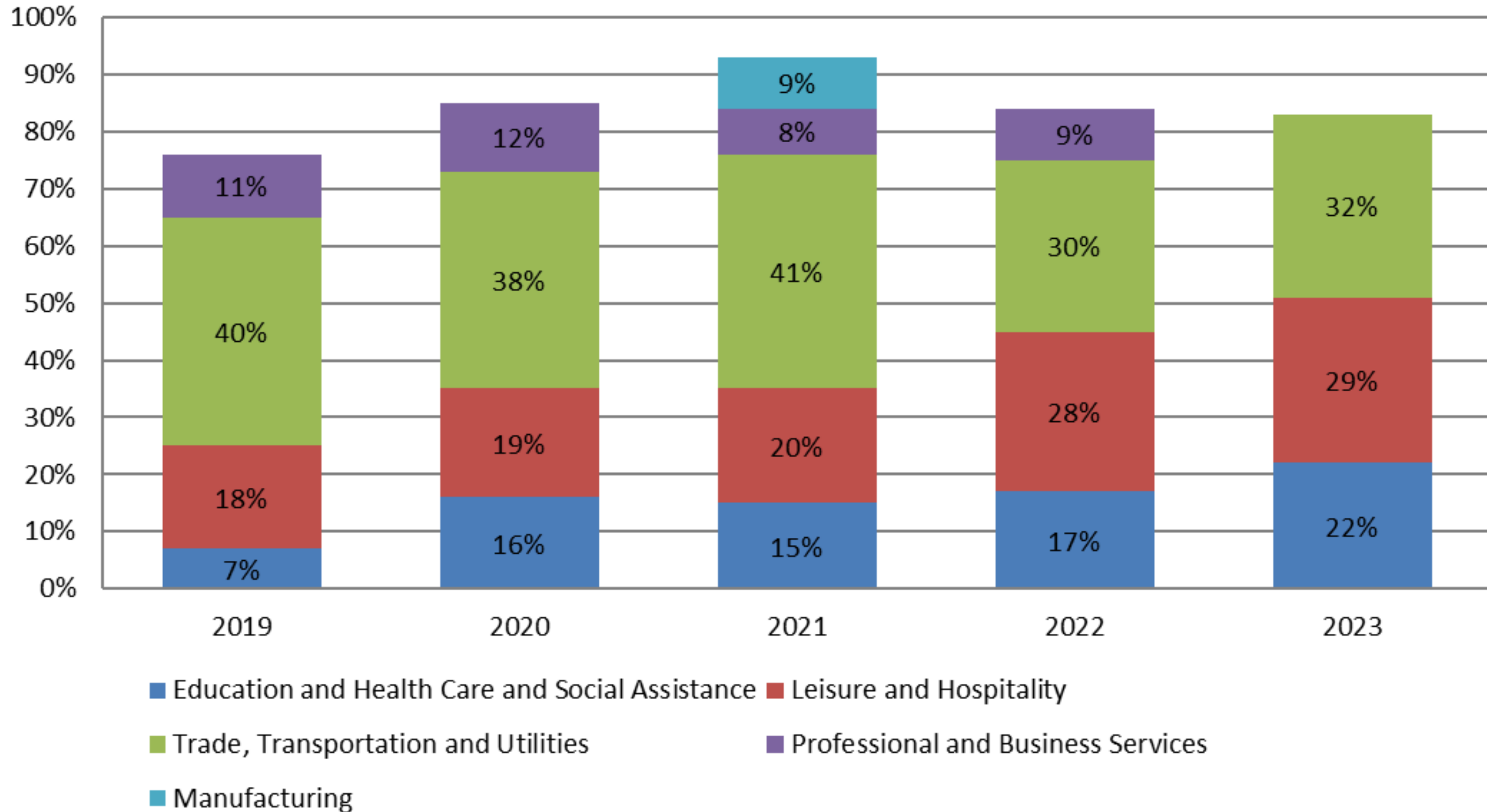


Developmental Course Enrollment-Comparable Districts



Entering the Workforce

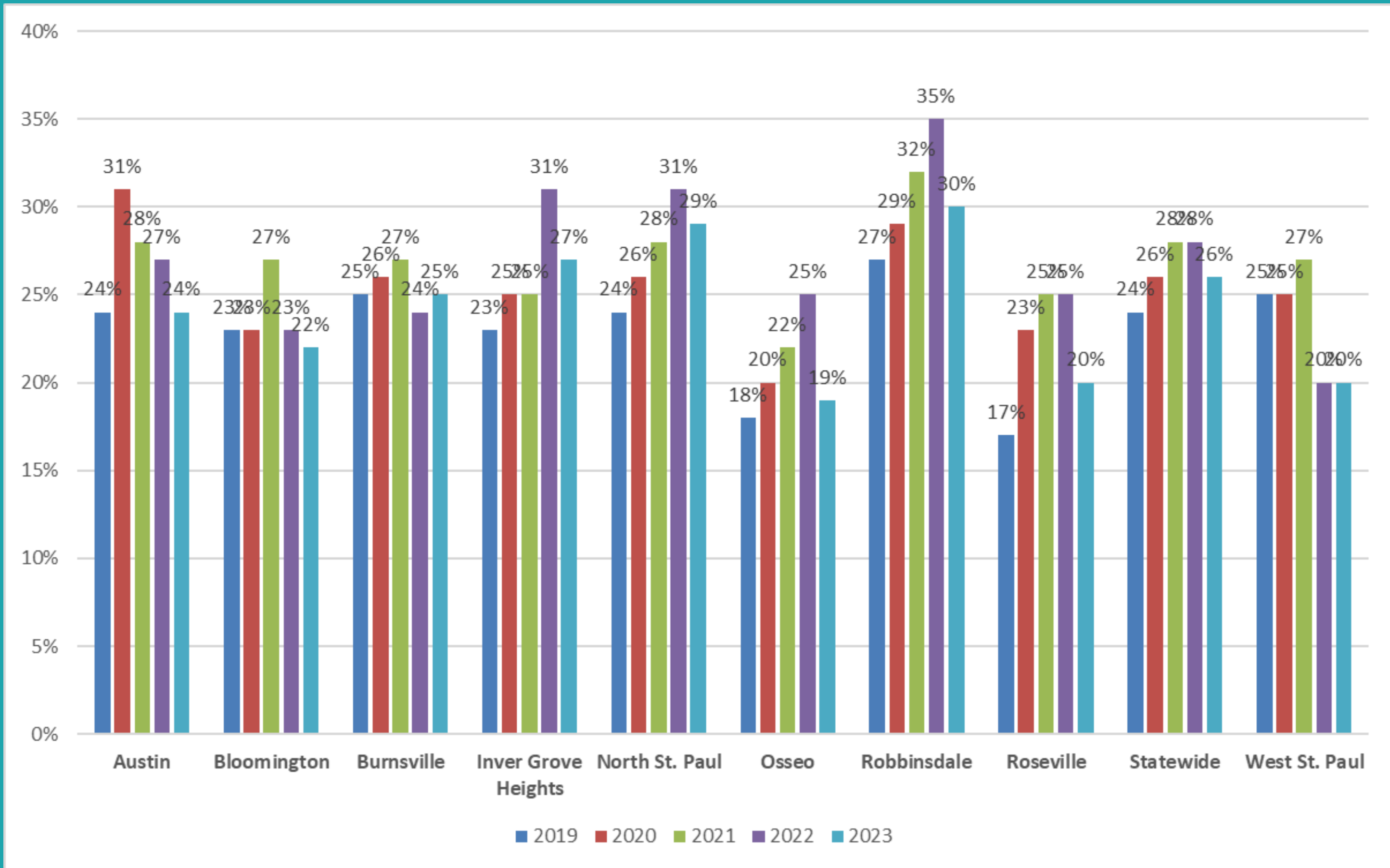
Students Entering the Workforce after Graduation



Entering the Workforce

Workforce Area	2019	2020	2021	2022	2023
Education and Health Care and Social Assistance		17	18	22	24
Leisure and Hospitality	16	20	25	36	32
Trade, Transportation and Utilities	36	40	50	38	35
Professional and Business Services	10	13	10	12	
Manufacturing			11		

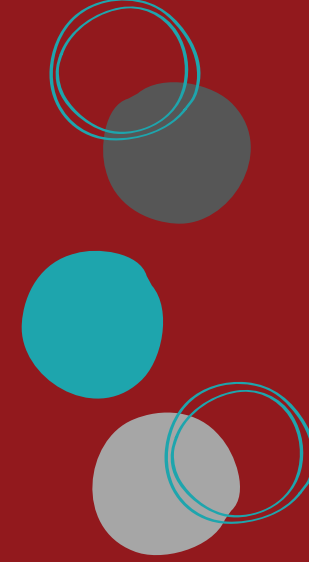
Entering the Workforce- Comparable Districts





Entering the Workforce or Postsecondary School by Race

	2019		2020		2021		2022		2023	
	BIPOC	White	BIPOC	White	BIPOC	White	BIPOC	White	BIPOC	White
Employed	19%	14%	20%	18%	26%	20%	29%	17%	22%	18%
Enrolled in Postsecondary	71%	76%	62%	66%	59%	66%	54%	75%	60%	74%





Postsecondary Data Summary

Postsecondary School Enrollment

- Enrollment decreased slightly
- Hispanic student enrollment up 69%
- Growing gap between male and female identifying students in enrollment
- Most comparables also decreased

Developmental Courses- Post Secondary Schools

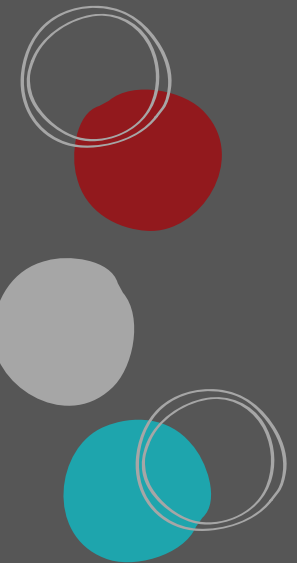
- Decreased by 3 percentage points
 - Statewide 1 percentage point decrease
 - Significant decreases for Hispanic and Multilingual Learner students and students with an IEP
- 



Postsecondary Data Summary

Graduates Entering the Workforce

- 20% of students entered the workforce in 2023
- Increase during COVID and years after, now decreasing
- Roseville Students entered the Fields of
 - Trades, Transportation, and Utilities
 - Leisure and Hospitality
 - Education, Health Care, and Social Assistance



Questions and Discussion

