



EDUCATION COMMITTEE MEETING

FEBRUARY 11, 2026

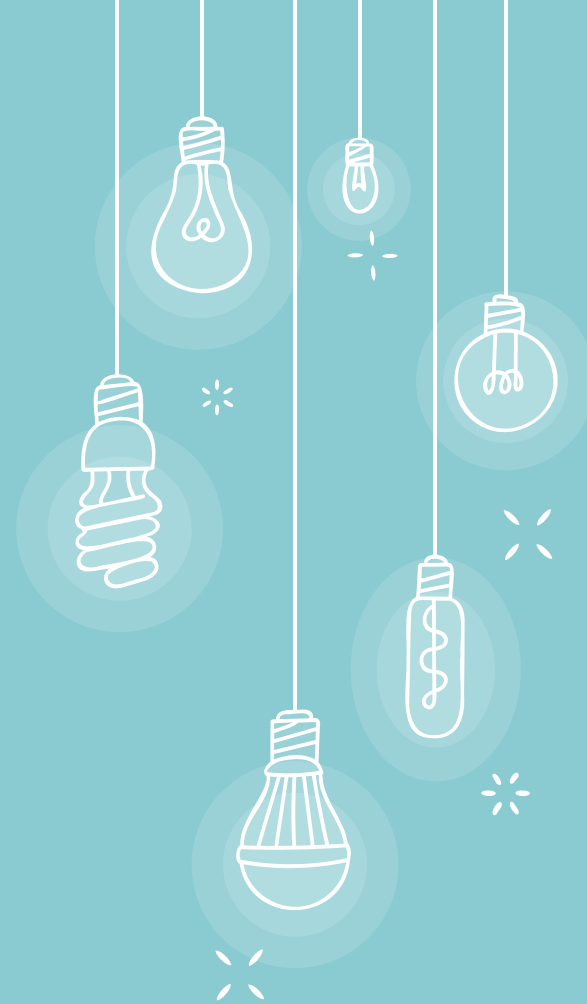


Agenda:

- Summer School Opportunities
- District Discipline Plan

HARLEM SUMMER SCHOOL 2026

- ➔ EXTENDED SCHOOL YEAR (ESY)
- ➔ HARLEM MIDDLE SCHOOL SUMMER SKILL BUILDING
- ➔ HARLEM HIGH SCHOOL CREDIT RECOVERY





EXTENDED SCHOOL YEAR (ESY)

Dates: June 8 - July 2

Days of the Week: Monday-Thursday

Time: 8:00am-12:00pm

Location: TBD





EXTENDED SCHOOL YEAR (ESY)

ESY is for students with IEPs only and services students who need consistent structure and instruction to prevent regression in learned skills.

ESY services students who qualify as a part of their IEP in grades pre-K-12+



HARLEM MIDDLE SCHOOL SUMMER SKILL BUILDING

- ✦ At Harlem Middle School
- ✦ 8 am - 12:15 pm
- ✦ Two hour math skill building and two hour ELA skill building
- ✦ Incoming 6th, 7th, and 8th graders
- ✦ June 1 - June 25 (pending no emergency days)
 - × Monday - Thursday
- ✦ \$150 per student no matter if they choose one content area or both.
 - × Free to students through School Improvement Grant Funds last summer.
 - × Summer Skill Building cost \$150 prior to the pandemic.
 - × We will set a minimum threshold of 20 students to run summer skill building.
 - × Summer skill building is not required. Fee waivers do not apply.





HIGH SCHOOL CREDIT RECOVERY

- ✦ At Harlem High School
- ✦ 8 am - 12:00 pm
- ✦ Available to current high school 10, 11, and 12 grade students.
- ✦ Dates:
 - × Session 1: June 1 - June 18 (pending no emergency days)
 - × Session 2: June 22 - July 9 (pending no emergency days)
 - × Monday - Thursday
- ✦ \$150 per session.
 - × Same fee as last school year.
 - × Credit recovery is not required. Fee waivers do not apply.





District Discipline Plan

HARLEM DATA WITH THE STATE



School District	School Year	Suspension Rate	Total Enrollment	Total Suspensions	Suspension Rate	Top 20% in Susp	Suspension Rate
Harlem UD 122	2018	Yes	6675	709	10.6217	1	69
Harlem UD 122	2019	Yes	6571	642	9.7702	1	85
Harlem UD 122	2020	Yes	6485	725	11.1796	1	34
Harlem UD 122	2021	Yes	6233	90	1.4439	0	101
Harlem UD 122	2022	Yes	6188	858	13.8655	1	42
Harlem UD 122	2023	Yes	6111	833	13.6312	1	68
Harlem UD 122	2024	Yes	6199	1134	18.2933	1	27
Harlem UD 122	2025	Yes	6045	748	12.3739	1	72



- Suspension Rate = Days of OSS/District Enrollment
- Typically between 570 - 580 school districts qualify.
- Even if we dip below the 20%, we will need to submit a plan for the next three years.

Highest Referrals tied to OSS

2025

- Dangerous Behaviors - 109
- Insubordination - 106
- Major Disruption - 94
- Tardy - Excessive - 90
- Not in assigned area - 80

2024

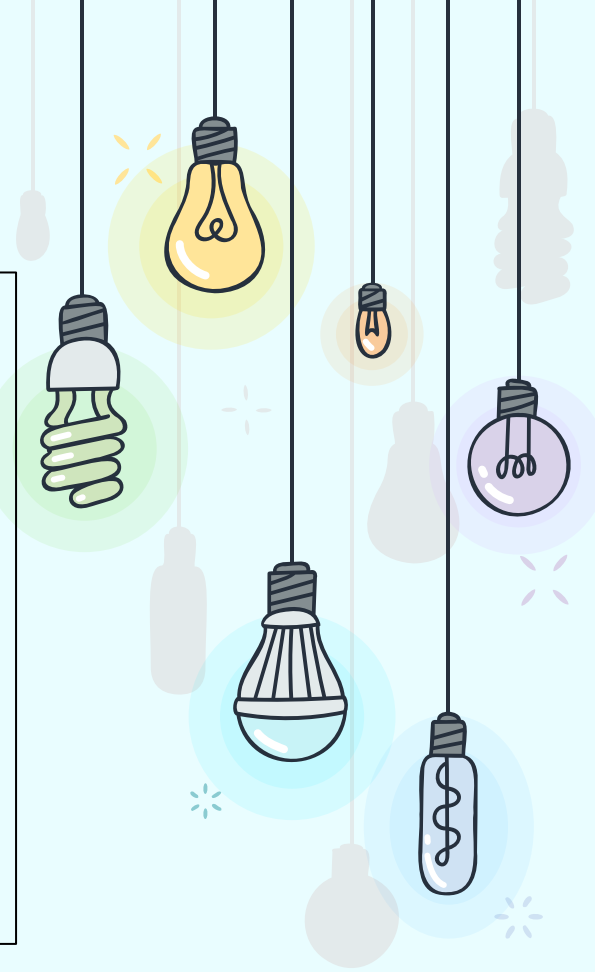
- Not in assigned area - 203
- Dangerous Behaviors - 188
- Major Disruptions - 164
- Insubordination - 123
- Language/Gesture - 107

2023

- Dangerous Behaviors - 196
- Not in assigned area - 136
- Major Disruption - 131
- Fighting - 100
- Insubordination - 84

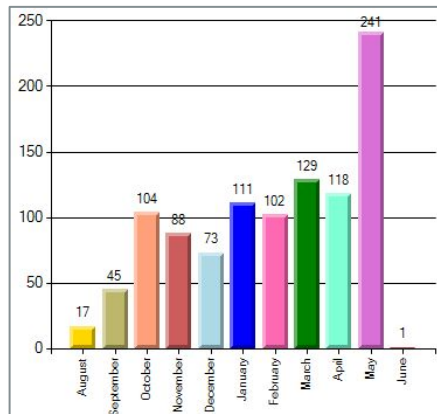
* DISPARITIES

- ✦ While not in the top 20% for racial disproportionality we noticed a higher proportion of OSS for:
 - × Black/African American make up 7.4% of our student population and 14.4% of our OSS rate.
 - × Two or More Races make up 9.2% of our student population and 19.5% of our OSS rate.
- ✦ Students with IEPs make up 22% of our student population and 46.49% of our OSS rate.

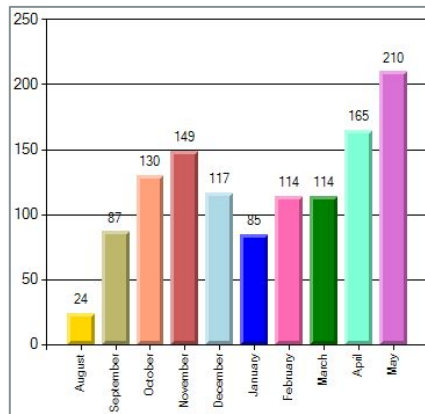


OSS REFERRALS BY MONTH

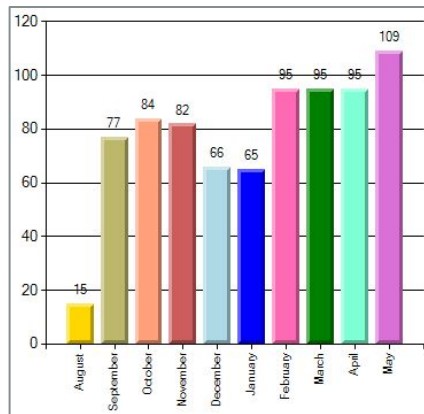
2023



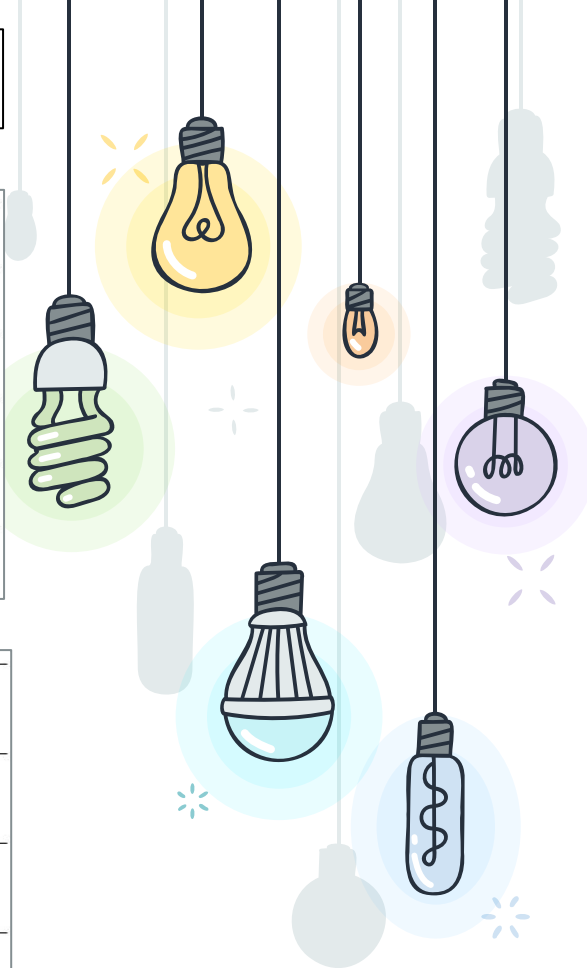
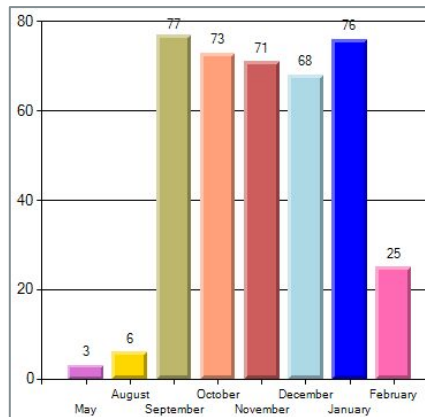
2024



2025



2026



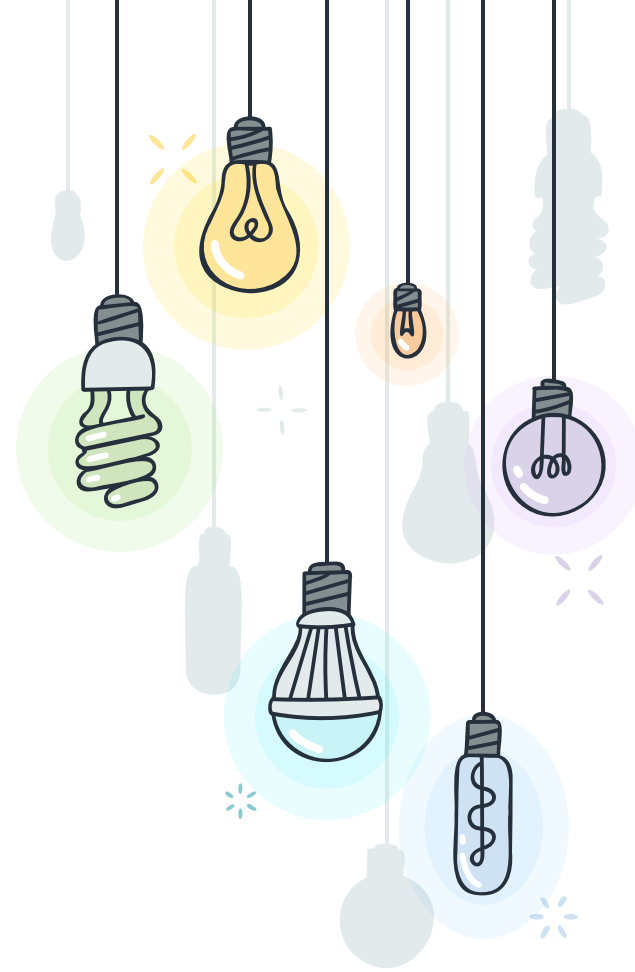
* POTENTIAL CAUSES

- With insubordination, major disruption, and not in assigned area could be from avoidance of class.
 - Inconsistent classroom management
 - Lack of a sense of belonging
 - Engagement
- Barriers involving stakeholders of repeat offenders



SUPPORTS OFFERED TO REDUCE/COUNTERACT OSS

- SEL curriculum provided to all students twice weekly
- PBIS
- Social work minutes (specifically tied to IEPs)
- Reduction in number of days given for substance from 10 - 7 (unless distribution is involved).
- Cell phone lockers at HHS
- Professional Development for staff
 - Positive Relationships
 - Equity
 - Classroom Management
- Restorative Practices



* RESTORATIVE PRACTICES

- Peer mediation
- Restorative lessons for targeted behavior in ISS, which typically preceded OSS for repeat offenders.
- Mandatory reentry meetings from OSS with multiple stakeholders.
- Drug and alcohol screening will decrease from 7 days to 3 days.



* CONTROLS

- + Regular building level administrative meetings to monitor discipline.
- + Attend district SBC meetings and utilize input from other administrators.
- + Focus on consequences that will reduce future occurrences.

